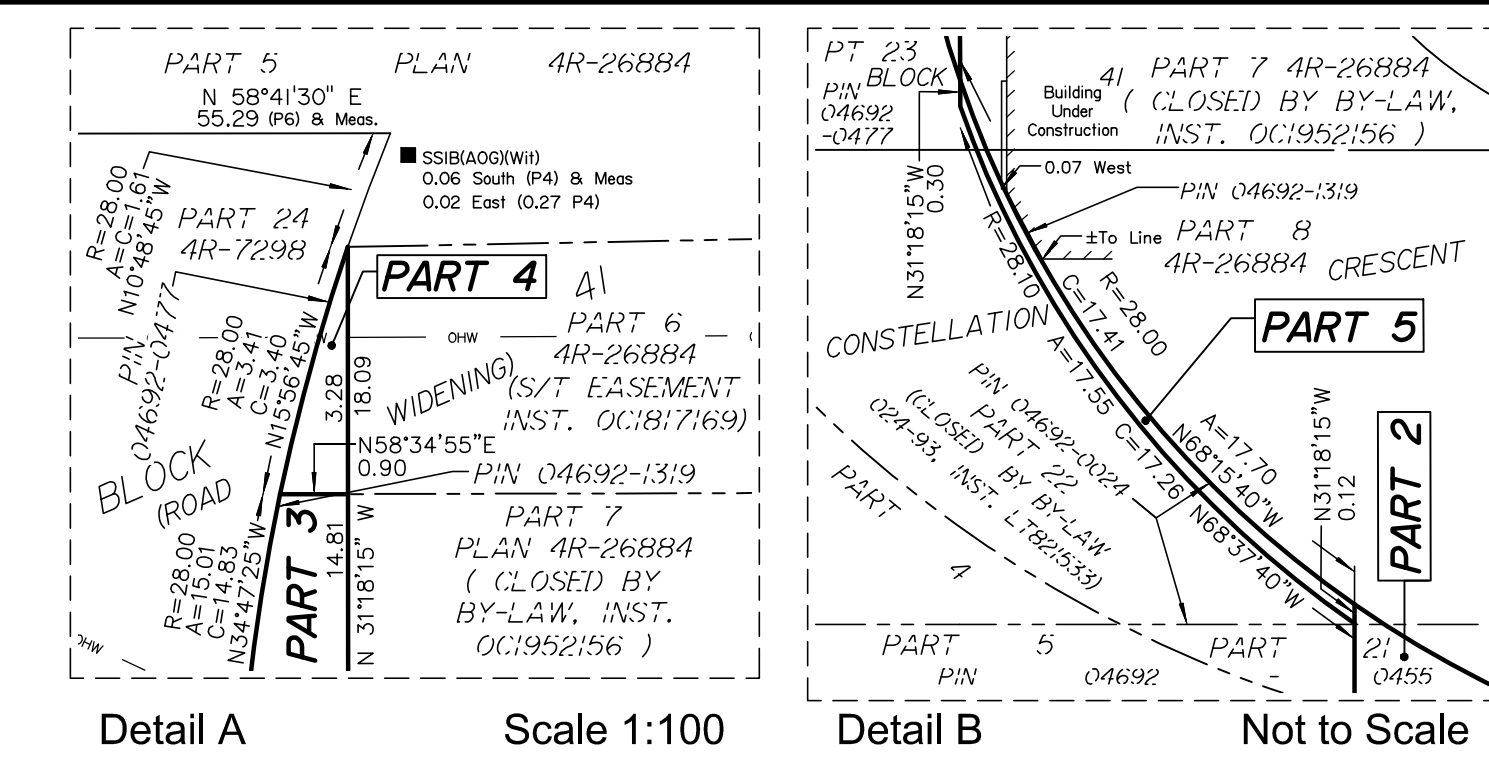
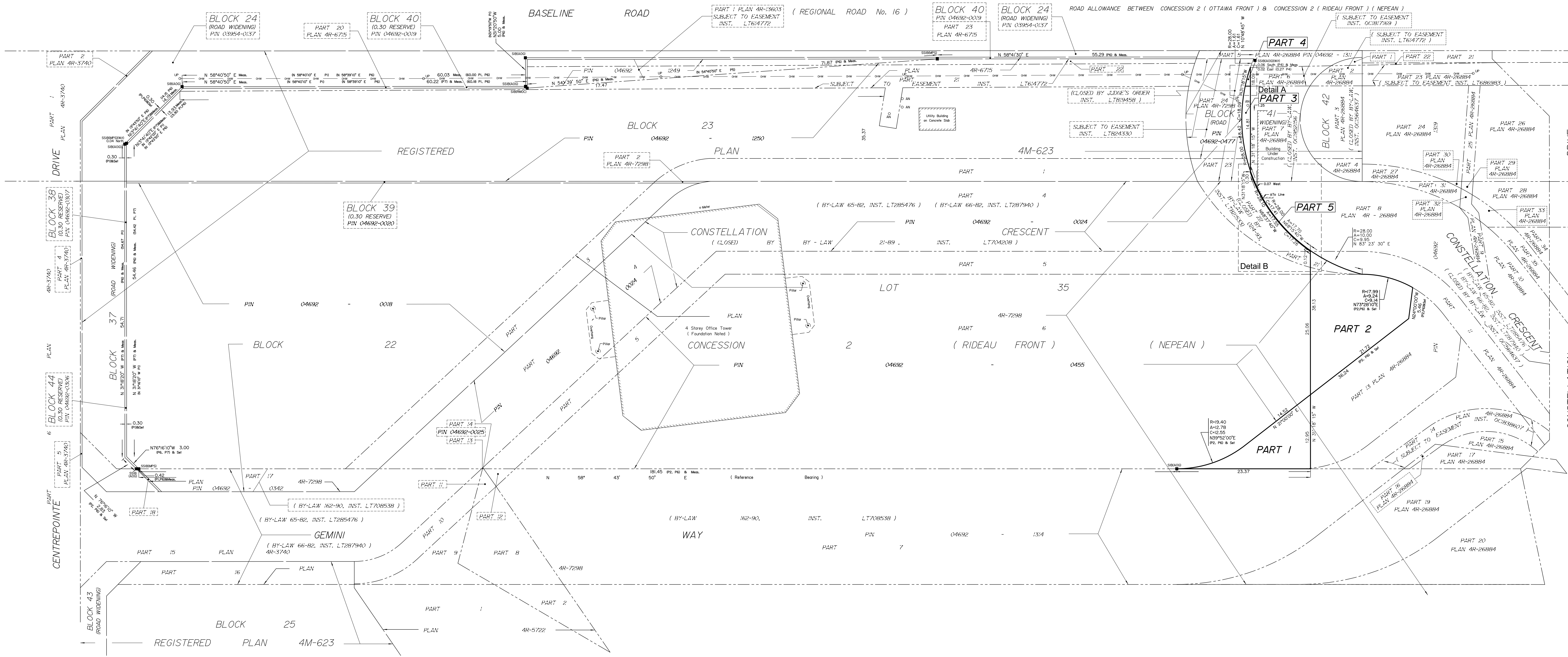


Committee of Adjustment
Received | Reçu le
2024-06-07
City of Ottawa | Ville d'Ottawa
Comité de dérogation



SCHEDULE		AREA (Sq.m)	PART	LOT/BLOCK	CONCESSION PLAN	PIN
113.0	1	PART OF LOT 35	CONCESSION 2	PART OF 04692-0018	PART OF 04692-0018	
259.7	2	PART OF LOT 35	CONCESSION 2	PART OF 04692-0018	PART OF 04692-0024	
16.6	3	PART OF BLOCK 41	PLAN 4M-623	PART OF 04692-1319		
1.6	4	PART OF BLOCK 41	PLAN 4M-623	PART OF 04692-1319		
1.7	5	PART OF LOT 35	CONCESSION 2	PART OF 04692-0024	PART OF 04692-0024	
				PART OF BLOCK 41	PART OF 04692-1319	

Part 4 is subject to easement per Inst. OC1817169



PLAN OF SURVEY OF
PART OF BLOCK 41 (ROAD WIDENING)
(As Closed by Judge's Order Inst. LT819458)
REGISTERED PLAN 4M-623
And
PART OF LOT 35 CONCESSION 2 (RIDEAU FRONT)
Geographic Township of Nepean
CITY OF OTTAWA
Surveyed by Annis, O'Sullivan, Vollebek Ltd.

Scale 1 : 250

Metric
DISTANCES AND COORDINATES SHOWN ON THIS PLAN ARE IN METRES AND CAN BE CONVERTED TO FEET BY DIVIDING BY 0.3048.

Surveyor's Certificate
I CERTIFY THAT:
1. This survey and plan are correct and in accordance with the Survey Act, the Surveyors Act and the Land Titles Act and the regulations made under them.
2. The survey was completed on the ___ day of _____, 2023.

Date: _____
E. H. Herveyer
Ontario Land Surveyor

- Notes & Legend
- Denotes Survey Monument Planted
 - Survey Monument Found
 - SIB Standard Iron Bar
 - SSIB Short Standard Iron Bar
 - IB Iron Bar
 - CC Cut Cross
 - (WIT) Witness
 - Meas. Measured
 - Calc'd Calculated
 - (PI) Registered Plan 4M-623
 - (P2) Plan 4R-7298
 - (P3) Plan 4R-28887
 - (P4) Plan 4R-28884
 - (P5) Plan 4R-13603
 - (P6) Plan by (AOG) dated December 10, 2009
 - (P7) Plan by (AOG) dated March 19, 2018
 - Overhead Wires
 - Utility Pole
 - AN Anchor
 - LS Light Standard
 - CL Centreline
 - △ S Sign

Distances shown on this plan are ground distances and can be converted to grid distances by multiplying by the combined scale factor of 0.99999x.
Bearings are grid, derived from Can-Net 3.0 Real Time Network GPS observations on reference points A and B, shown hereon, having a bearing of N89°43'50"W and are referenced to Specified Control Points 01919680005 and 01919750705, MTM Zone 9 (76°30' West Longitude) NAD-83 (original).
For bearing comparisons, a rotation of 0°00'00" counter-clockwise was applied to bearings on plan.
Coordinate values are to urban accuracy in accordance with O. Reg. 216/10.
• 01919680005 Northing 5027191.26 Easting 361466.76
• 01919750705 Northing 5016816.93 Easting 360806.84
• Point A Northing Easting
• Point B Northing Easting
Caution: Coordinates cannot, in themselves, be used to re-establish corners or boundaries shown on this plan.