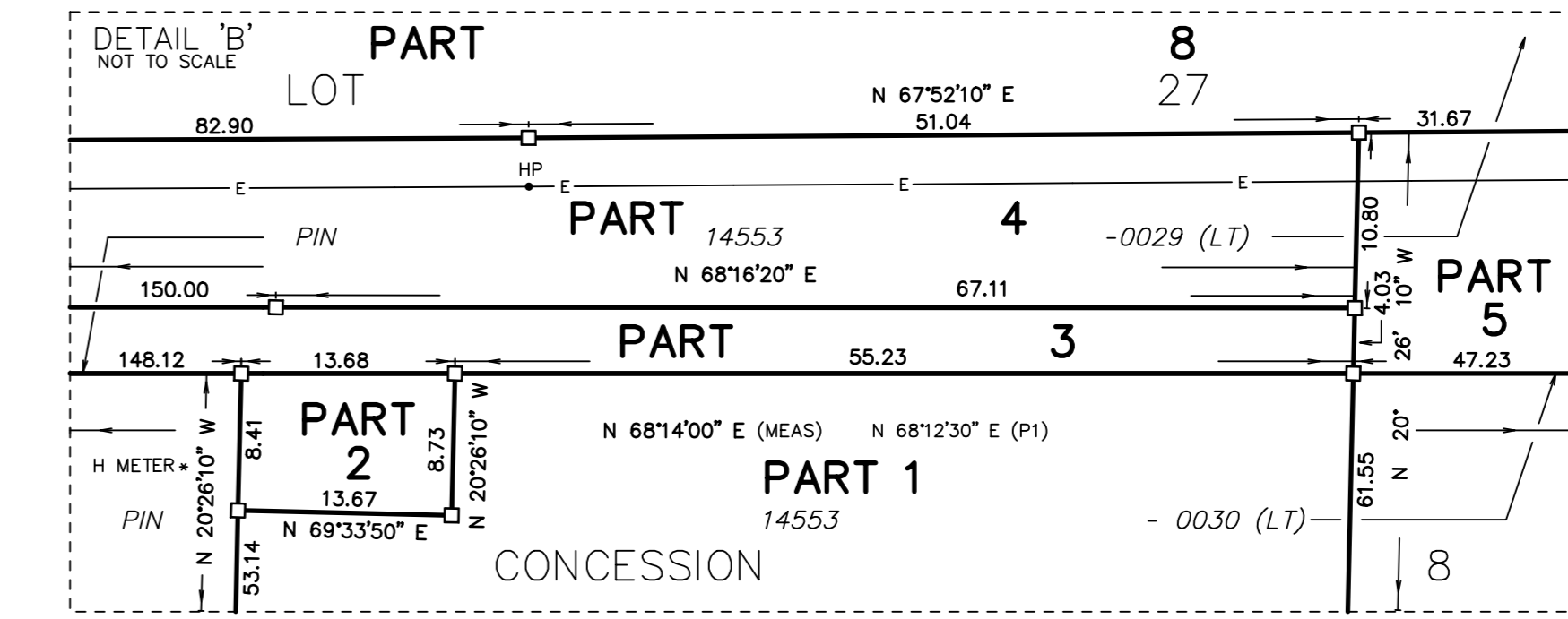
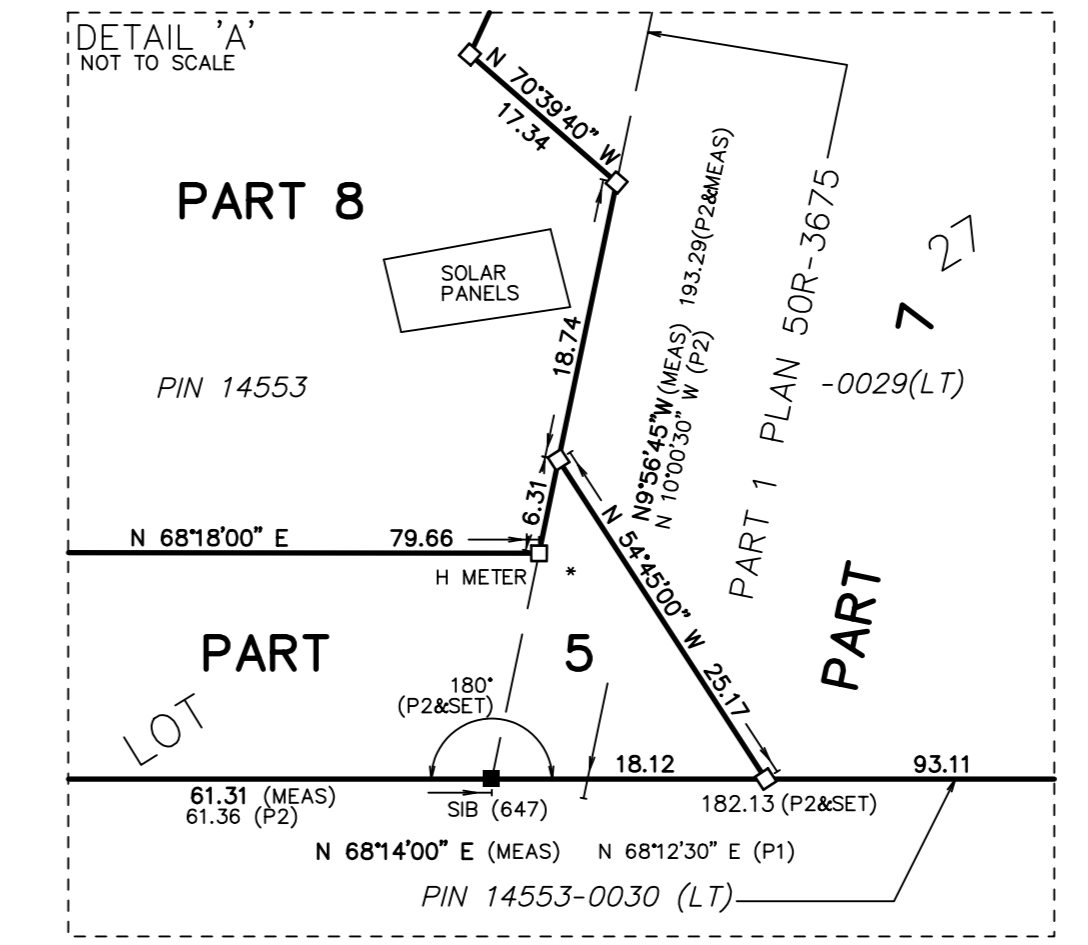


Committee of Adjustment  
Received | Reçu le  
2024-06-03  
City of Ottawa | Ville d'Ottawa  
Comité de dérogation

FOR REVIEW ONLY

SCHEDULE				
PART	LOT	CON	PIN	AREA(sq. m.)
1				4122.7
2			14553-0030(LT)	117.2
3				1880.9
4	PART OF	CONCESSION 8 (CUMBERLAND)		5333.8
5	LOT 27			1836.7
6			ALL OF	15608.7
7			14553-0029(LT)	16618.9
8	PART OF			219172.7
	LOTS 26			
	AND 27			



PLAN OF SURVEY OF  
PART OF LOTS 26 AND 27  
CONCESSION 8  
GEOGRAPHIC TOWNSHIP OF CUMBERLAND  
CITY OF OTTAWA

SCALE 1 : 1250  
25 50 75 metres

J.D. BARNES LIMITED  
THE INTENDED PLOT SIZE OF THIS PLAN IS 1250mm IN WIDTH BY 609mm IN HEIGHT WHEN PLOTTED AT A SCALE OF 1:1250

METRIC DISTANCES AND/OR COORDINATES SHOWN ON THIS PLAN ARE IN METRES AND CAN BE CONVERTED TO FEET BY DIVIDING BY 0.3048.

NOTES

BEARINGS ARE MTM GRID, AND REFERRED TO THE EASTERLY LIMIT OF PART 2 PLAN 50R-124, HAVING A BEARING OF N 23°00'00" W, AS SHOWN HEREON. DISTANCES ARE GROUND, AND CAN BE CONVERTED TO GRID BY MULTIPLYING BY THE COMBINED SCALE OF 0.999988.

FOR BEARING COMPARISONS, A ROTATION OF 0°42'30" COUNTER-CLOCKWISE WAS APPLIED TO BEARINGS ON P. P1 AND P2.

INTEGRATION DATA			
POINT ID	EASTING	NORTHING	
ORP (A)	392 852.96	5 022 716.92	
ORP (B)	392 588.01	5 022 791.51	

COORDINATES CANNOT, IN THEMSELVES, BE USED TO RE-ESTABLISH CORNERS OR BOUNDARIES SHOWN ON THIS PLAN.  
THE RESULTANT TIE BETWEEN ORP (A) AND ORP (B) IS 275.24 N 74°16'40" W (GROUND)

LEGEND		
■	DENOTES	SURVEY MONUMENT FOUND
□	DENOTES	SURVEY MONUMENT SET
—	DENOTES	STANDARD IRON BAR
P	DENOTES	PLAN RD45
P1	DENOTES	PLAN RD29
P2	DENOTES	PLAN 50R-3675
647	DENOTES	H.R. FARLEY, O.L.S.
MTC	DENOTES	MINISTRY OF TRANSPORTATION AND COMMUNICATIONS
BF	DENOTES	BOARD FENCE
PWF	DENOTES	POST & WIRE FENCE
ANC	DENOTES	ANCHOR
HP	DENOTES	HYDRO POLE
•	DENOTES	HYDRO METER
•	DENOTES	FENCE POST
—	DENOTES	UNDERGROUND GAS LINE
—	DENOTES	UNDERGROUND HYDRO LINE
—	DENOTES	UNDERGROUND TELEPHONE LINE
---	DENOTES	PROPERTY LINE

N=NORTH / S=SOUTH / E=EAST / W=WEST

SURVEYOR'S CERTIFICATE  
I CERTIFY THAT:  
1. THIS SURVEY AND PLAN ARE CORRECT AND IN ACCORDANCE WITH THE SURVEYORS ACT AND THE LAND TITLES ACT AND THE REGULATIONS MADE UNDER THEM.  
2. THE SURVEY WAS COMPLETED ON X X 2023.

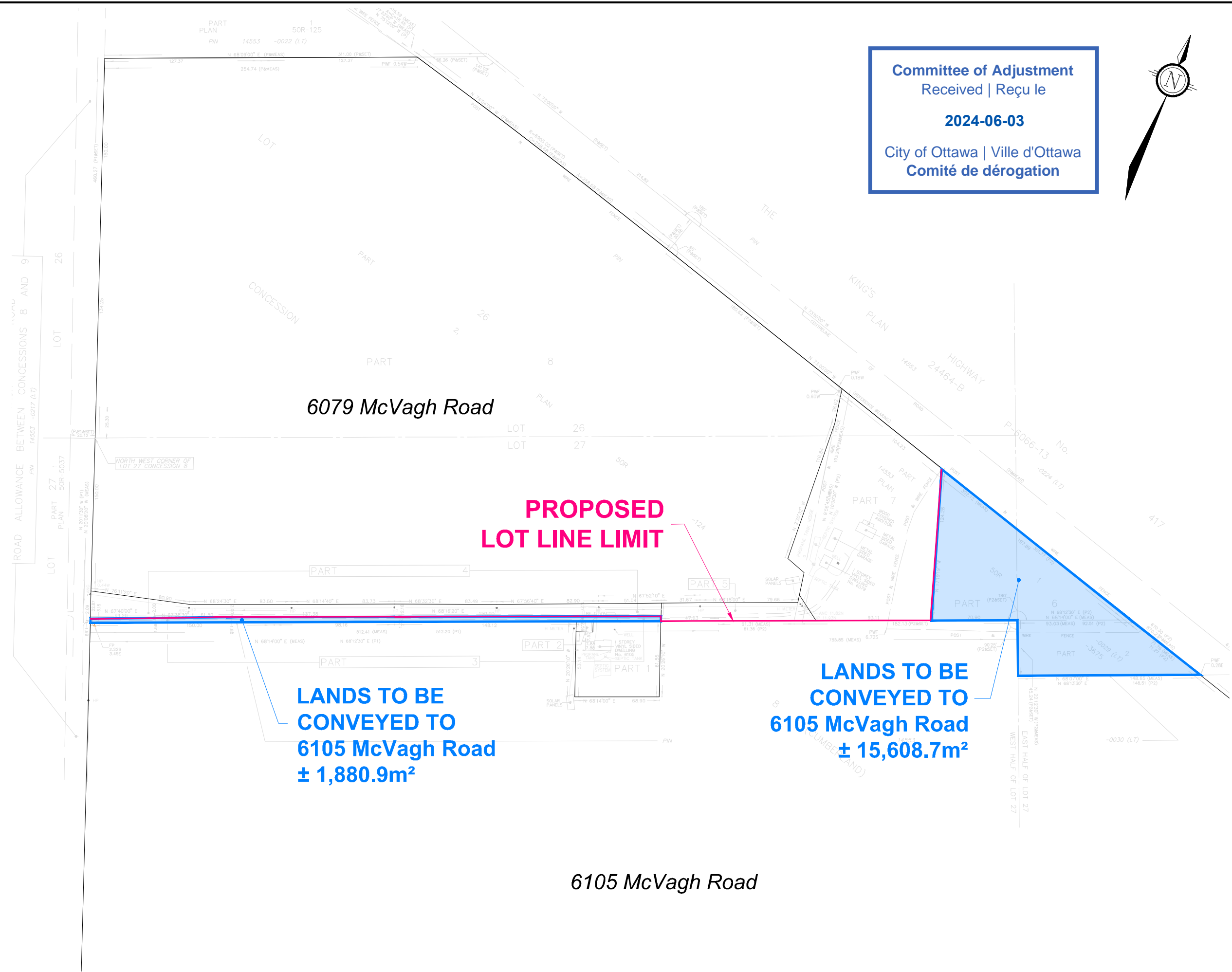
PRELIMINARY DATE \_\_\_\_\_ PRELIMINARY DATE \_\_\_\_\_  
G. J. LANGLOIS  
ONTARIO LAND SURVEYOR

THIS PLAN OF SURVEY RELATES TO AOLS SUBMISSION FORM NUMBER XXXXXX

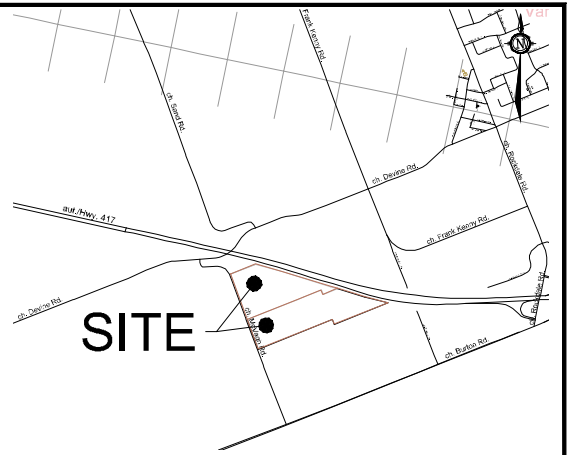
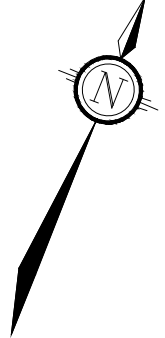
J.D. BARNES SURVEYING & MAPPING GIS  
LAND INFORMATION SPECIALISTS  
62 STEACIE DRIVE, SUITE 103, KANATA, ON K2K 2A9  
T: (613) 731-7244 F: (613) 254-8639 www.jdbarnes.com

DRAWN BY: CE/RP CHECKED BY: JL REFERENCE NO.: 23-10-134-00  
PLOTTED: 5/08/24 DATED: 05/02/2024

M:\2022\122155\CAD\Overall\Planning\Figures\122155-SEV.dwg\_SEV1, May 14, 2024 - 2:44pm, wslloss



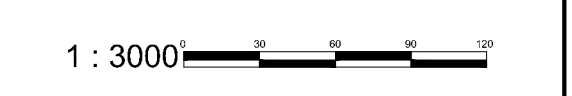
**Committee of Adjustment**  
 Received | Reçu le  
**2024-06-03**  
 City of Ottawa | Ville d'Ottawa  
 Comité de dérogation



KEY PLAN  
N.T.S.

**CONSENT APPLICATION #1**  
**LOT LINE ADJUSTMENT**  
 6079 & 6105 McVAGH ROAD

PART OF LOTS 26 & 27  
 CONCESSION 8  
 CITY OF OTTAWA



No.	REVISION	DATE	BY
2.	ISSUED FOR SUBMISSION	MAY 14/24	MV
1.	ISSUED FOR DISCUSSION	OCT 05/23	MV

**NOVATECH**  
 Engineers, Planners & Landscape Architects  
 Suite 200, 240 Michael Cowpland Drive  
 Ottawa, Ontario, Canada K2M 1P5  
 Telephone (613) 254-9643  
 Facsimile (613) 254-5867  
 Website www.novatech-eng.com

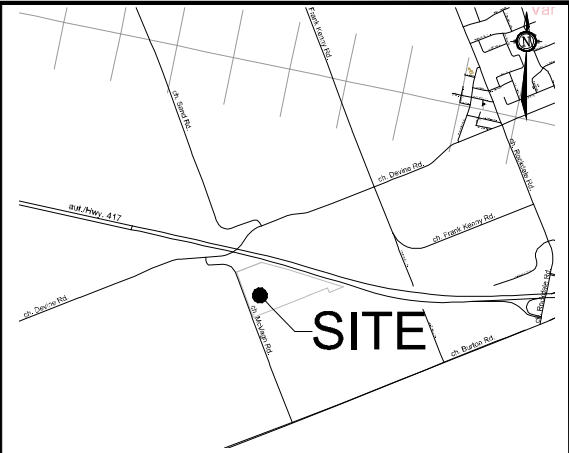
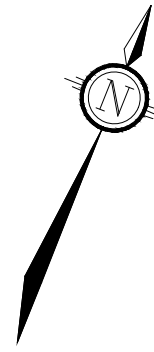
ISSUED	MAY, 2024
PROJECT No.	122155
DRAWING No.	122155-SEV

6105 McVagh Road



M:\2022\122155\CAD\Overall\Planning\Figures\122155-SEV.dwg\_SEV2\_May 14, 2024 - 2:44pm\_wsloss

Committee of Adjustment  
Received | Reçu le  
**2024-06-03**  
City of Ottawa | Ville d'Ottawa  
Comité de dérogation



KEY PLAN  
N.T.S.

# CONSENT APPLICATION #2 SEVERANCE & EASEMENT PLAN

6079 McVAGH ROAD

PART OF LOTS 26 & 27  
CONCESSION 8  
CITY OF OTTAWA

1 : 3000

No.	REVISION	DATE	BY
2.	ISSUED FOR SUBMISSION	MAY 14/24	MV
1.	ISSUED FOR DISCUSSION	OCT 05/23	MV

 Engineers, Planners & Landscape Architects Suite 200, 240 Michael Cowpland Drive Ottawa, Ontario, Canada K2M 1P6 Telephone (613) 254-9643 Facsimile (613) 254-5867 Website www.novatech-eng.com	ISSUED	MAY, 2024
	PROJECT No.	122155
	DRAWING No.	122155-SEV2

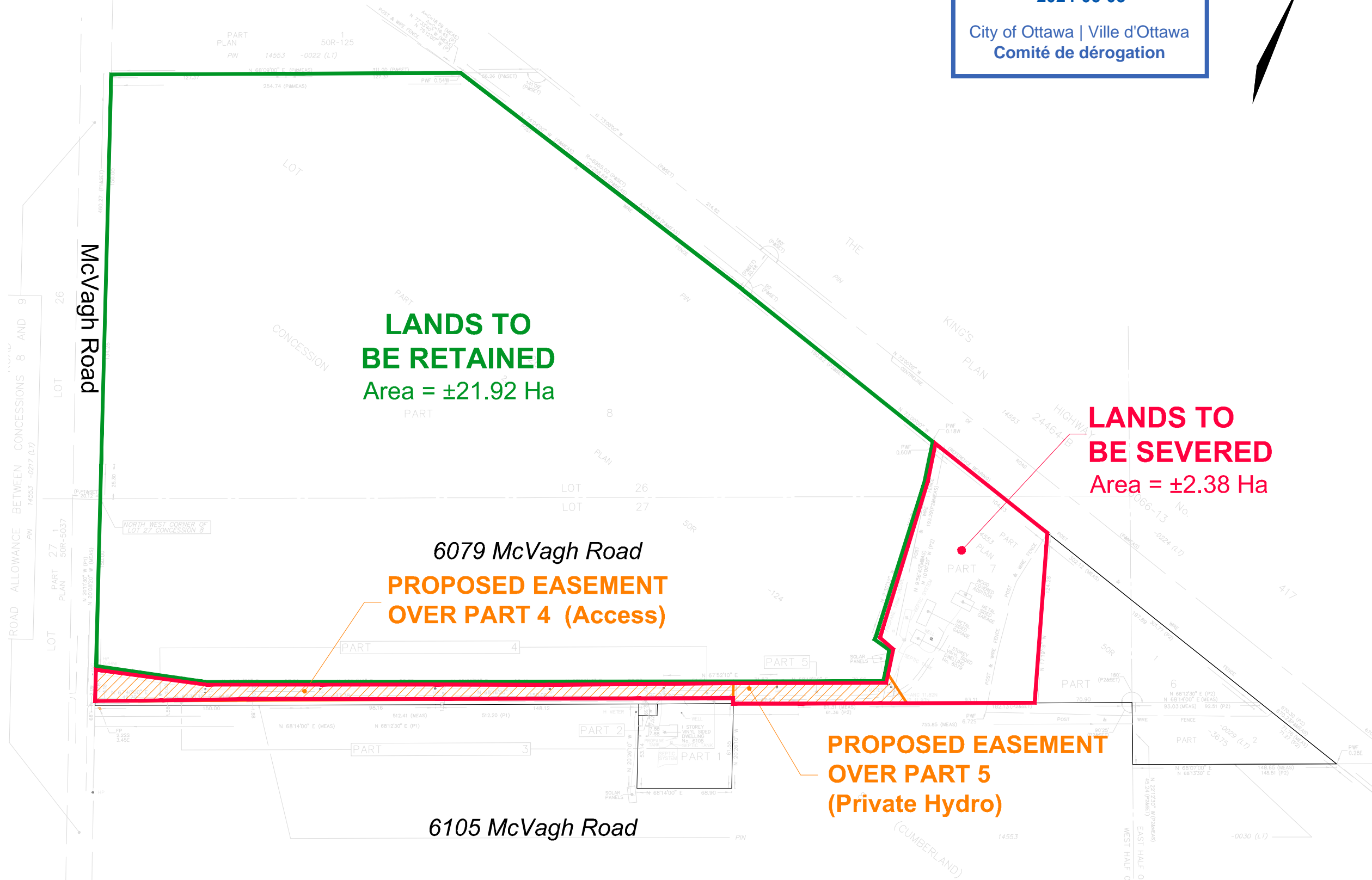
**LANDS TO BE RETAINED**  
Area = ±21.92 Ha

**LANDS TO BE SEVERED**  
Area = ±2.38 Ha

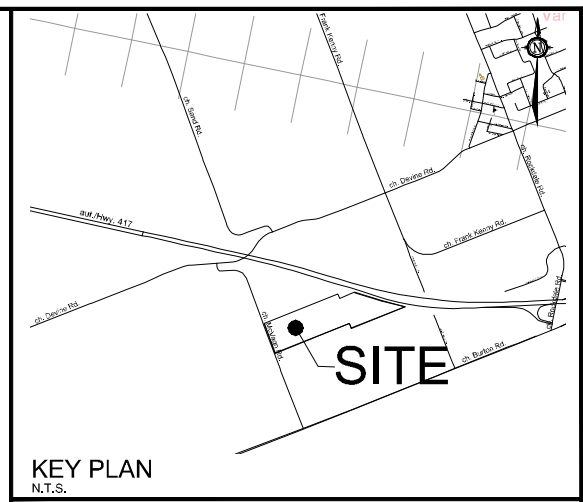
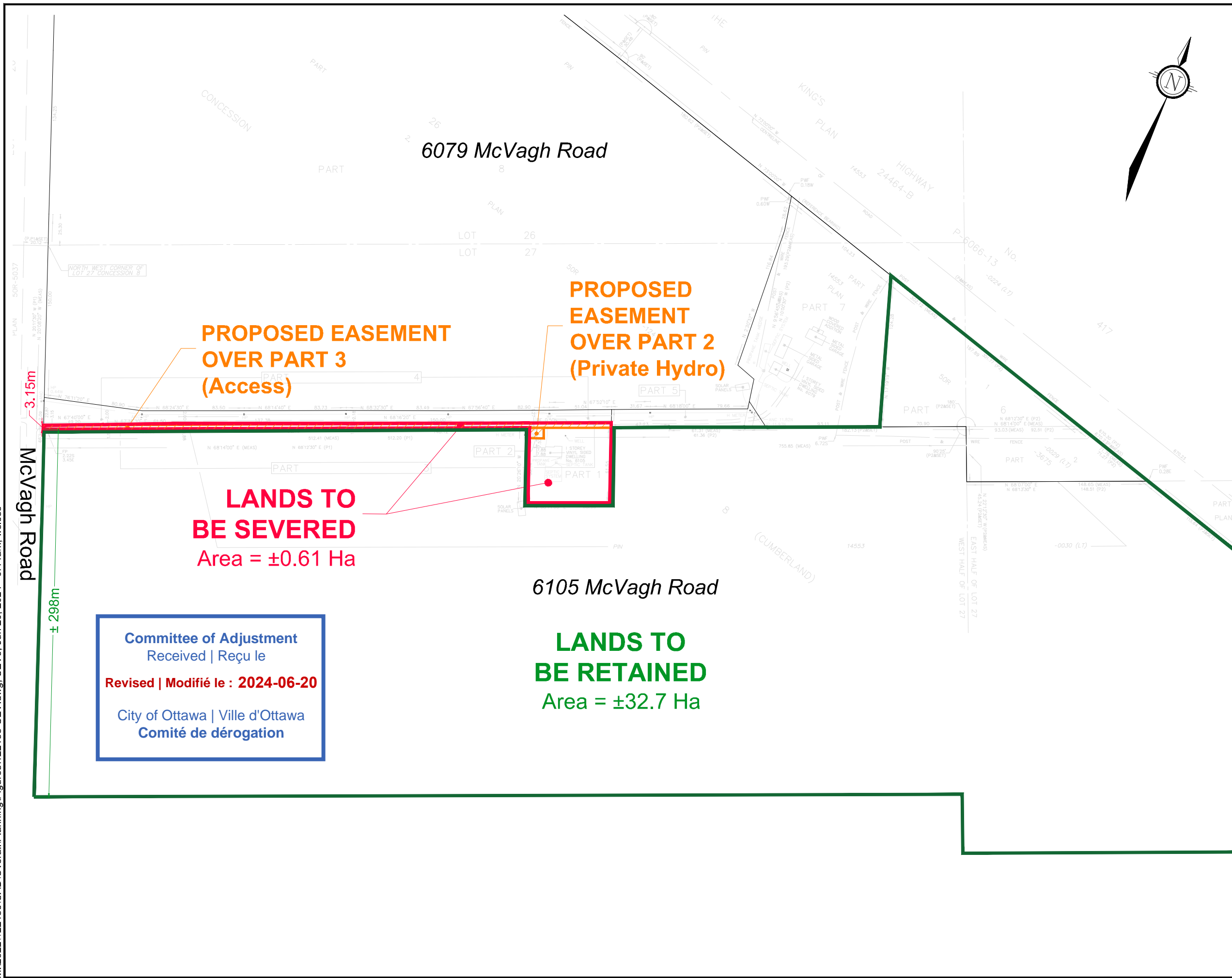
6079 McVagh Road  
**PROPOSED EASEMENT OVER PART 4 (Access)**

**PROPOSED EASEMENT OVER PART 5 (Private Hydro)**

6105 McVagh Road



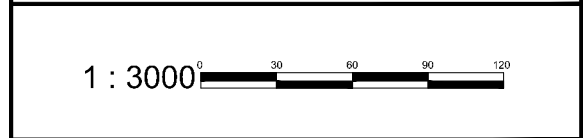
M:\2022\122155\CAD\Overall\Planning\Figures\122155-SEV.dwg, SEV3, Jun 20, 2024 - 9:14am, wslloss



# CONSENT APPLICATION #3 SEVERANCE & EASEMENT PLAN

6105 McVAGH ROAD

PART OF LOTS 26 & 27  
CONCESSION 8  
CITY OF OTTAWA



No.	REVISION	DATE	BY
3.	REVISED PER CITY COMMENTS	JUNE 2024	MV
2.	ISSUED FOR SUBMISSION	MAY 14/24	MV
1.	ISSUED FOR DISCUSSION	OCT 05/23	MV

<p>Engineers, Planners &amp; Landscape Architects Suite 200, 240 Michael Cowpland Drive Ottawa, Ontario, Canada K2M 1P6</p> <p>Telephone (613) 254-9643 Facsimile (613) 254-5867 Website www.novatech-eng.com</p>	ISSUED
	JUNE, 2024
	PROJECT No. 122155
	DRAWING No. 122155-SEV3