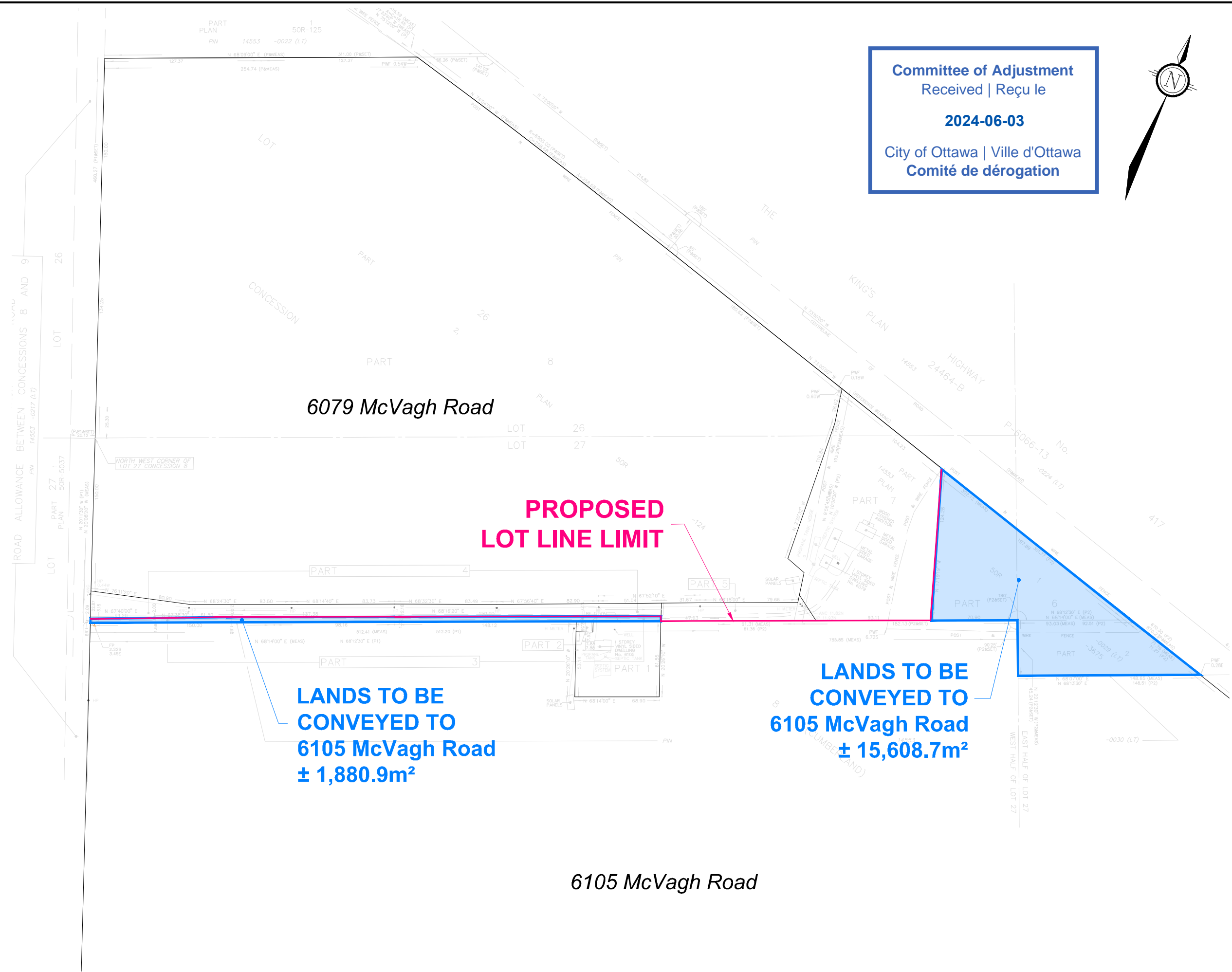
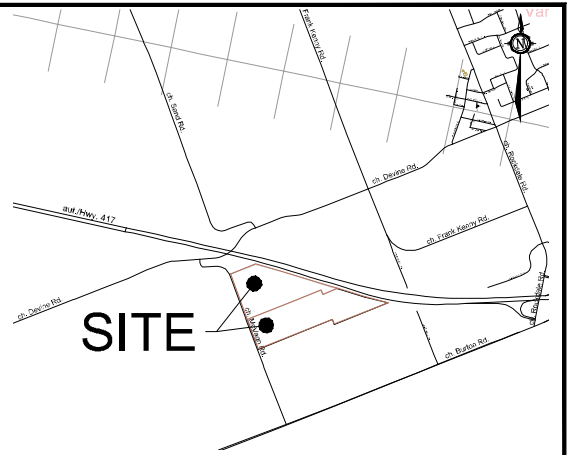
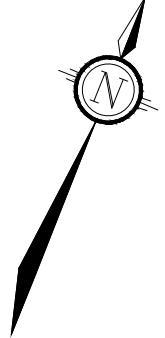


M:\2022\122155\CAD\Overall\Planning\Figures\122155-SEV.dwg_SEV1_May 14, 2024 - 2:44pm_wslloss



Committee of Adjustment
 Received | Reçu le
2024-06-03
 City of Ottawa | Ville d'Ottawa
 Comité de dérogation



KEY PLAN
N.T.S.

CONSENT APPLICATION #1

LOT LINE ADJUSTMENT

6079 & 6105 McVAGH ROAD

PART OF LOTS 26 & 27
 CONCESSION 8
 CITY OF OTTAWA

1 : 3000

No.	REVISION	DATE	BY
2.	ISSUED FOR SUBMISSION	MAY 14/24	MV
1.	ISSUED FOR DISCUSSION	OCT 05/23	MV

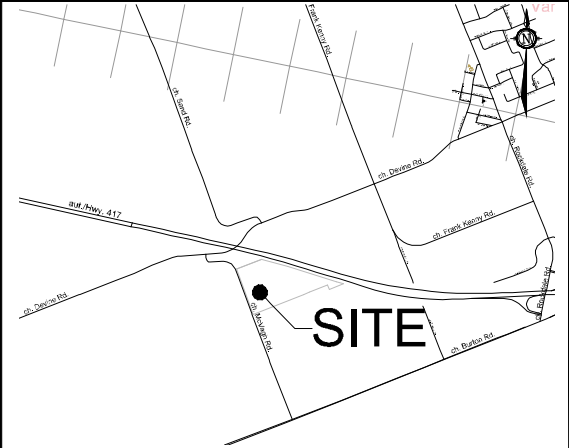
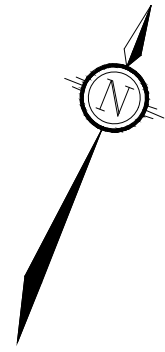
NOVATECH
 Engineers, Planners & Landscape Architects
 Suite 200, 240 Michael Cowpland Drive
 Ottawa, Ontario, Canada K2M 1P5
 Telephone (613) 254-9643
 Facsimile (613) 254-5867
 Website www.novatech-eng.com

ISSUED	MAY, 2024
PROJECT No.	122155
DRAWING No.	122155-SEV

6105 McVagh Road

M:\2022\122155\CAD\Overall\Planning\Figures\122155-SEV.dwg_SEV2_May 14, 2024 - 2:44pm_wsl

Committee of Adjustment
Received | Reçu le
2024-06-03
City of Ottawa | Ville d'Ottawa
Comité de dérogation



KEY PLAN
N.T.S.

CONSENT APPLICATION #2 SEVERANCE & EASEMENT PLAN

6079 McVAGH ROAD

PART OF LOTS 26 & 27
CONCESSION 8
CITY OF OTTAWA

1 : 3000

No.	REVISION	DATE	BY
2.	ISSUED FOR SUBMISSION	MAY 14/24	MV
1.	ISSUED FOR DISCUSSION	OCT 05/23	MV

 Engineers, Planners & Landscape Architects Suite 200, 240 Michael Cowpland Drive Ottawa, Ontario, Canada K2M 1P6 Telephone (613) 254-9643 Facsimile (613) 254-5867 Website www.novatech-eng.com	ISSUED	MAY, 2024
	PROJECT No.	122155
	DRAWING No.	122155-SEV2

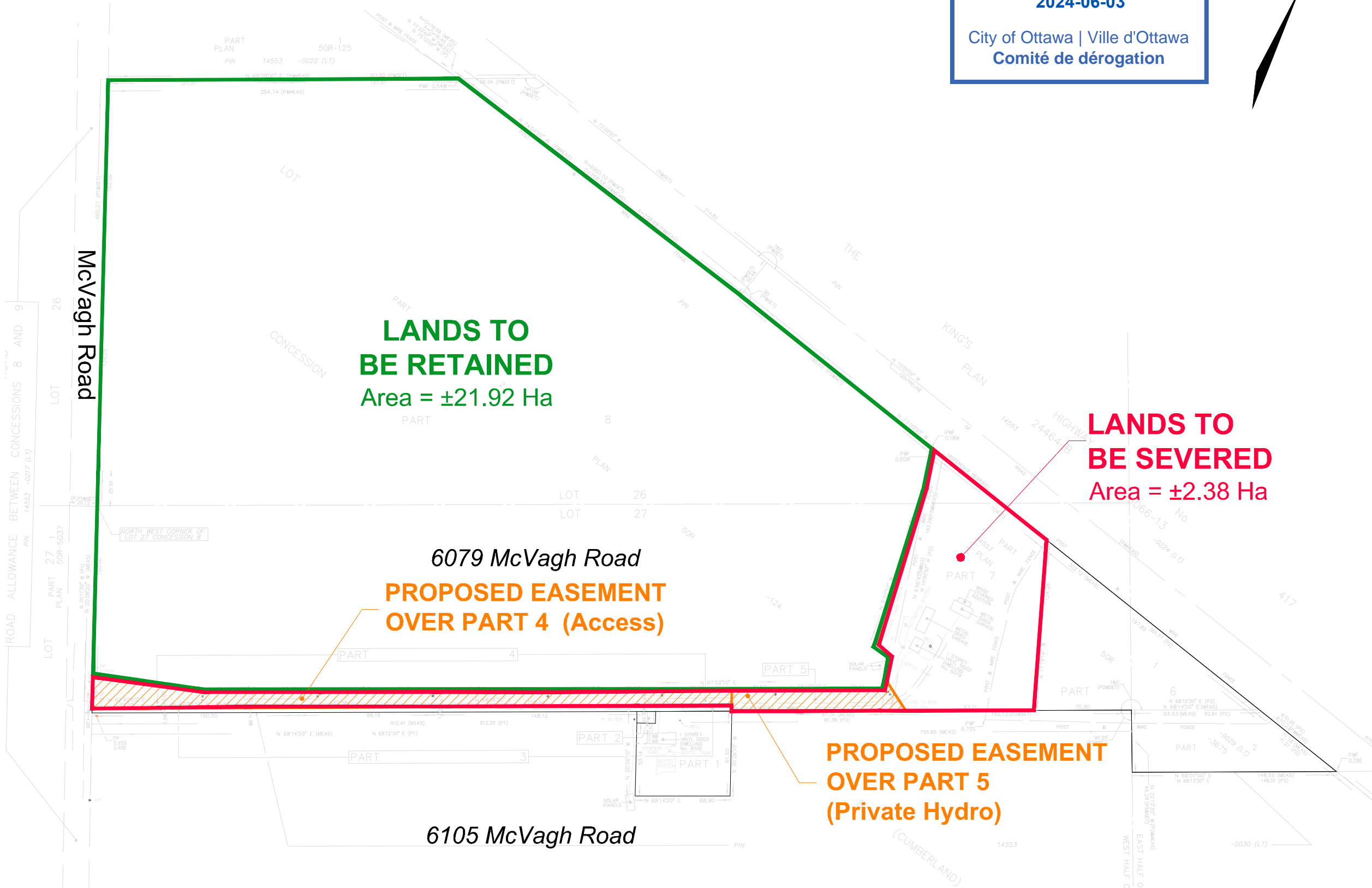
LANDS TO BE RETAINED
Area = ±21.92 Ha

LANDS TO BE SEVERED
Area = ±2.38 Ha

6079 McVagh Road
PROPOSED EASEMENT OVER PART 4 (Access)

PROPOSED EASEMENT OVER PART 5 (Private Hydro)

6105 McVagh Road



McVagh Road

ROAD ALLOWANCE BETWEEN CONCESSIONS 8 AND 9

LOT 26

LOT 27

LOT

CONCESSION

LANDS TO BE RETAINED

Area = ±21.92 Ha

6079 McVagh Road

PROPOSED EASEMENT OVER PART 4 (Access)

PROPOSED EASEMENT OVER PART 5 (Private Hydro)

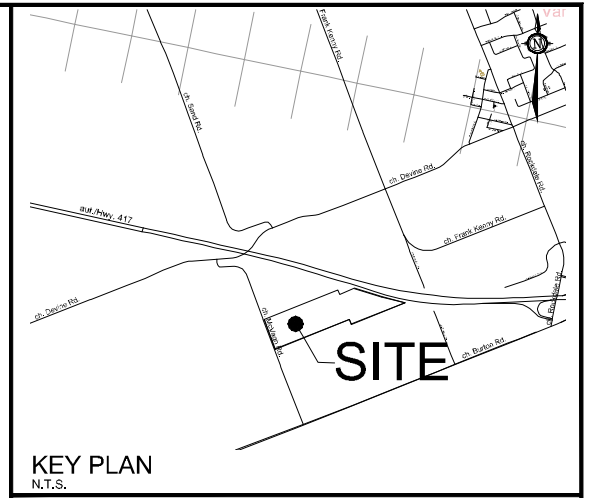
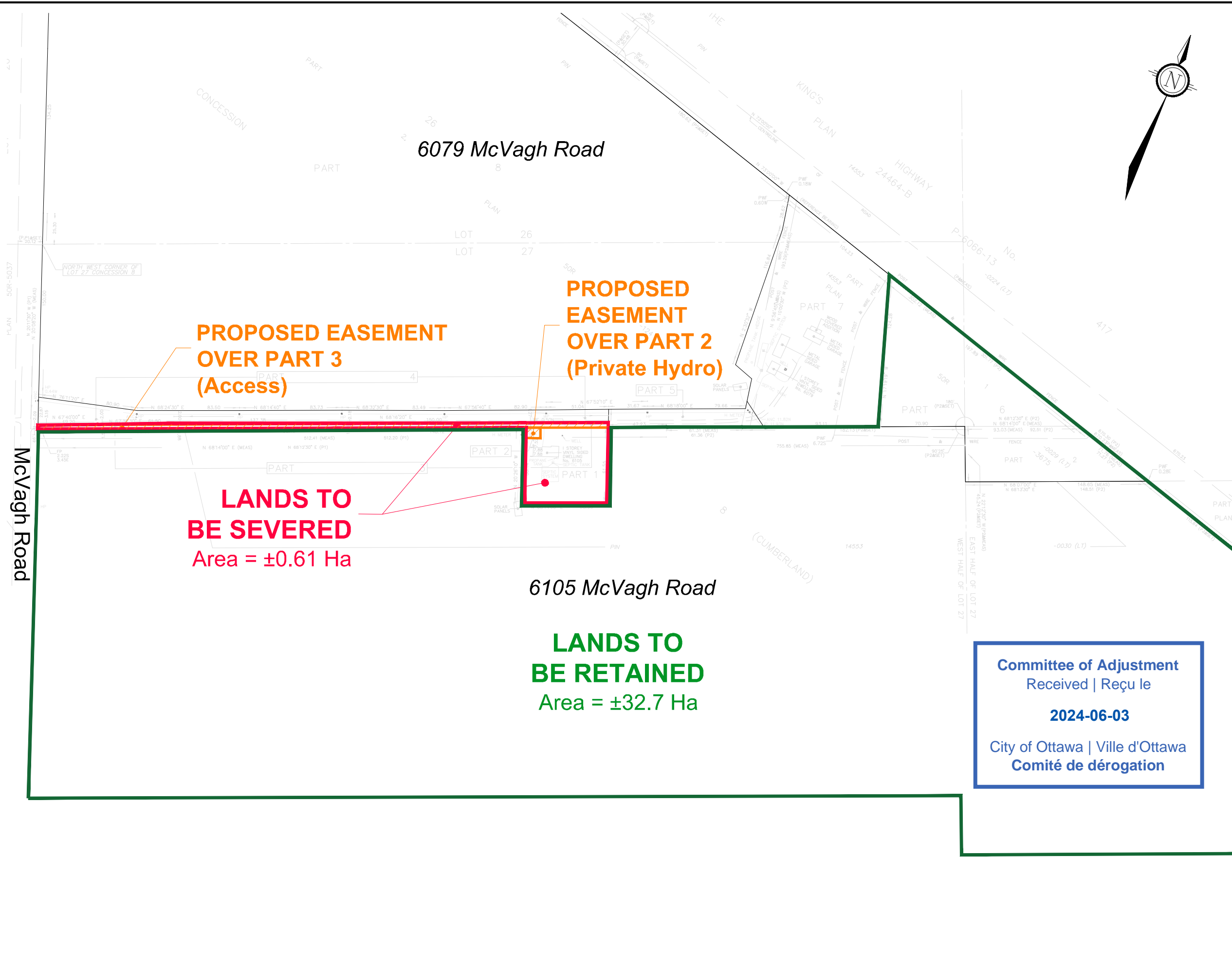
6105 McVagh Road

LANDS TO BE SEVERED

Area = ±2.38 Ha

(CUMBERLAND)

M:\2022\122155\CAD\Overall\Planning\Figures\122155-SEV.dwg, SEV3, May 14, 2024 - 2:44pm, wslloss



CONSENT APPLICATION #3 SEVERANCE & EASEMENT PLAN

6105 McVAGH ROAD

PART OF LOTS 26 & 27
CONCESSION 8
CITY OF OTTAWA

Committee of Adjustment
Received | Reçu le
2024-06-03
City of Ottawa | Ville d'Ottawa
Comité de dérogation

1 : 3000

No.	REVISION	DATE	BY
2.	ISSUED FOR SUBMISSION	MAY 14/24	MV
1.	ISSUED FOR DISCUSSION	OCT 05/23	MV

 <small>Engineers, Planners & Landscape Architects Suite 200, 240 Michael Cowpland Drive Ottawa, Ontario, Canada K2M 1P6 Telephone (613) 254-9643 Facsimile (613) 254-5867 Website www.novatech-eng.com</small>	ISSUED	MAY, 2024
	PROJECT No.	122155
	DRAWING No.	122155-SEV3