

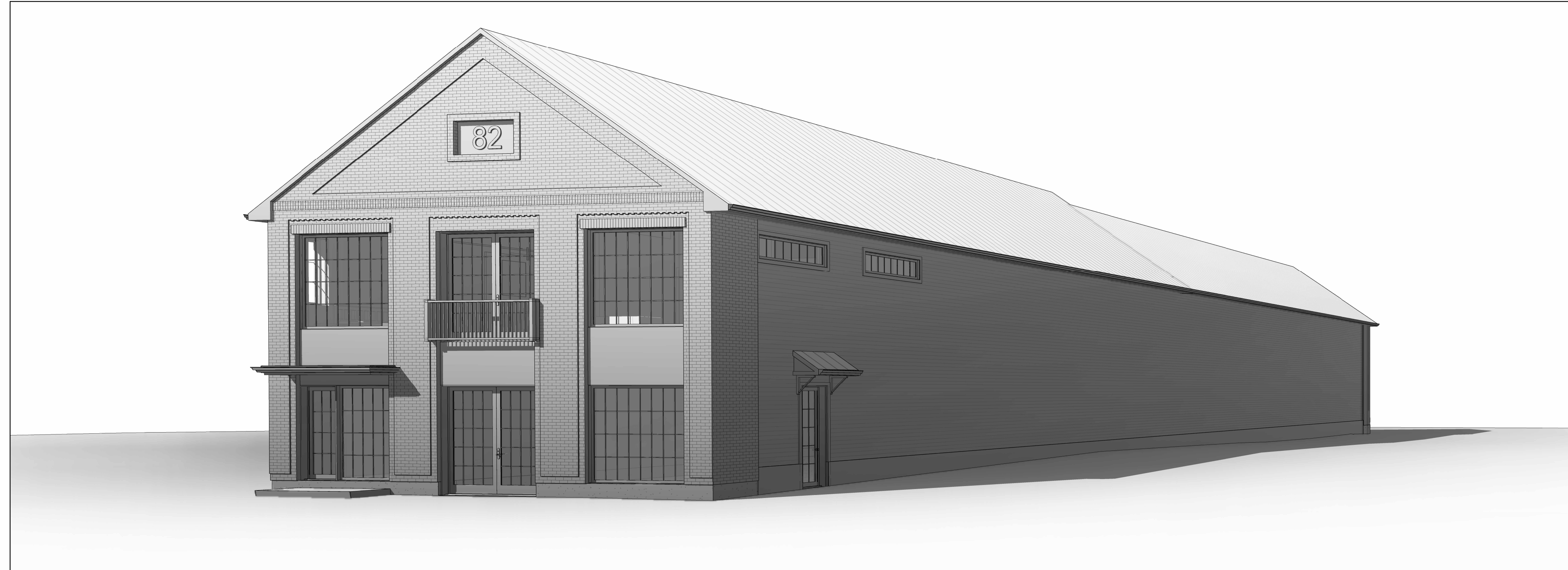
# 82 NORMAN / 117 PAMILLA

## PROPOSED DWELLING & PERSONAL ART COLLECTION

Committee of Adjustment  
Received | Reçu le  
2024-05-27  
City of Ottawa | Ville d'Ottawa  
Comité de dérogation

### MINOR VARIANCE DRAWING LIST

A0.0	
A0.1	SITE PLAN
A1.0	FOUNDATION AND GROUND FLOOR PLAN
A1.1	SECOND AND ROOF PLAN
A2.1	NORTH ELEVATION (NORMAN ST)
A2.2	SIDE ELEVATION
A2.3	SOUTH ELEVATION (PAMILLA ST)



### DECLARATION OF DESIGNER:

I, Jason Grant, declare that I review and take responsibility for the design work on behalf of a firm registered under subsection 3.2.4. of Division C, of the Building Code. I am qualified, and the firm is registered, in the appropriate classes/categories.

Individual BCIN: 41118

Firm BCIN: 100426

I certify that:

- The information contained in this schedule is true to the best of my knowledge.
- I have submitted this application with the knowledge and consent of the firm.

Signature of Designer: \_\_\_\_\_

Date: \_\_\_\_\_

### GENERAL NOTES

#### APPLICABLE TO ALL DRAWINGS INCLUSIVE

-GC/PROJECT MANAGER TO PROVIDE SAMPLES FOR ANY PRODUCTS THAT ARE SUBSTITUTED FOR THOSE SPECIFIED IN THE FOLLOWING CONSTRUCTION DOCUMENTS OR ANY OTHER GENERAL SCOPE OF WORK ISSUED DOCUMENTS. ALTERNATE SAMPLES TO BE APPROVED BY DESIGNER AND CLIENT. ALL MATERIALS TO BE STORED AS PER MANUFACTURE'S SPECIFICATIONS.

-GC AND ALL SUBCONTRACTORS (SUBC) ASSOCIATED WITH THE CONSTRUCTION OF THIS PROJECT MUST COMPLY WITH ALL MUNICIPAL BYLAWS AND ALL APPLICABLE BUILDING CODES, SPECIFICALLY THE ONTARIO BUILDING CODE, 2012 AND ALL UPDATED AMENDMENTS.

-THE GC/PM IS RESPONSIBLE FOR MAINTAINING A CLEAN AND SAFE SITE AT ALL TIMES AND FOR THE REMOVAL AND DISPOSAL OF ALL DEBRIS FROM THE SITE ON A REGULAR BASIS. THE WORK SITE IS TO BE BROOM SWEEPED AT THE END OF EACH DAY WHEN APPLICABLE.

-THE GC/PM AND ANY OF HIS/HER SUBCONTRACTORS ARE REQUESTED TO REPORT ANY DISCREPANCIES IN THE FOLLOWING CONSTRUCTION DOCUMENTS TO GRANT & HENLEY DESIGN GROUP (2465359 ONTARIO INC.) PRIOR TO COMMENCEMENT OF WORK.

-ALL WORK TO BE PERFORMED TO THE HIGHEST STANDARDS. ALL TRADES TO PROTECT ALL WORK AND MATERIALS OF OTHER TRADES WHILE PERFORMING WORK.

-DAMAGE TO THE BUILDING OR PREMISES CAUSED BY THE GC/PM OR HIS EMPLOYEE(S) OR SUBCONTRACTORS SHALL BE REPAIRED AT HIS/HERS EXPENSE. ALL SURFACES DAMAGED BY CONSTRUCTION TO BE MADE GOOD.

-THE GC/PM IS REQUESTED TO PROVIDE THE CLIENT WITH ALL LEFT OVER FINISHING PRODUCTS FOR FLOORING, PAINT, WALLS ETC.) AT THE COMPLETION OF THE PROJECT.

-DO NOT SCALE DRAWINGS

-OWNERSHIP OF THE COPYRIGHT OF THE DESIGN AND THE WORKS EXECUTED FROM THE DESIGN REMAIN WITH 2465359 ONTARIO INC. AND MAY NOT BE REPRODUCED IN ANY FORM WITHOUT THE WRITTEN CONSENT OF 2465359 ONTARIO INC.

-COPYRIGHTS RESERVED.

## 82 NORMAN / 117 PAMILLA

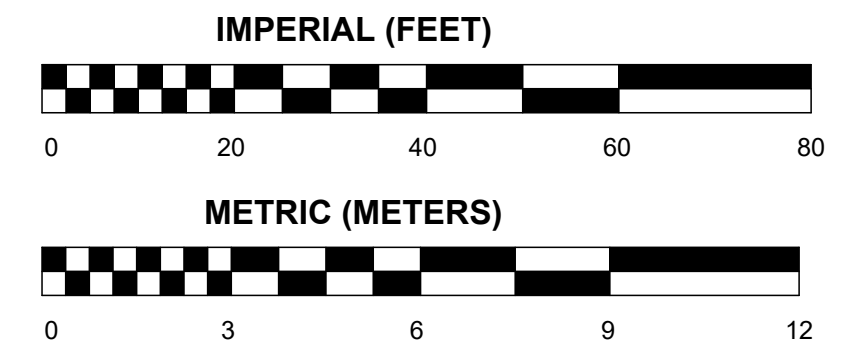
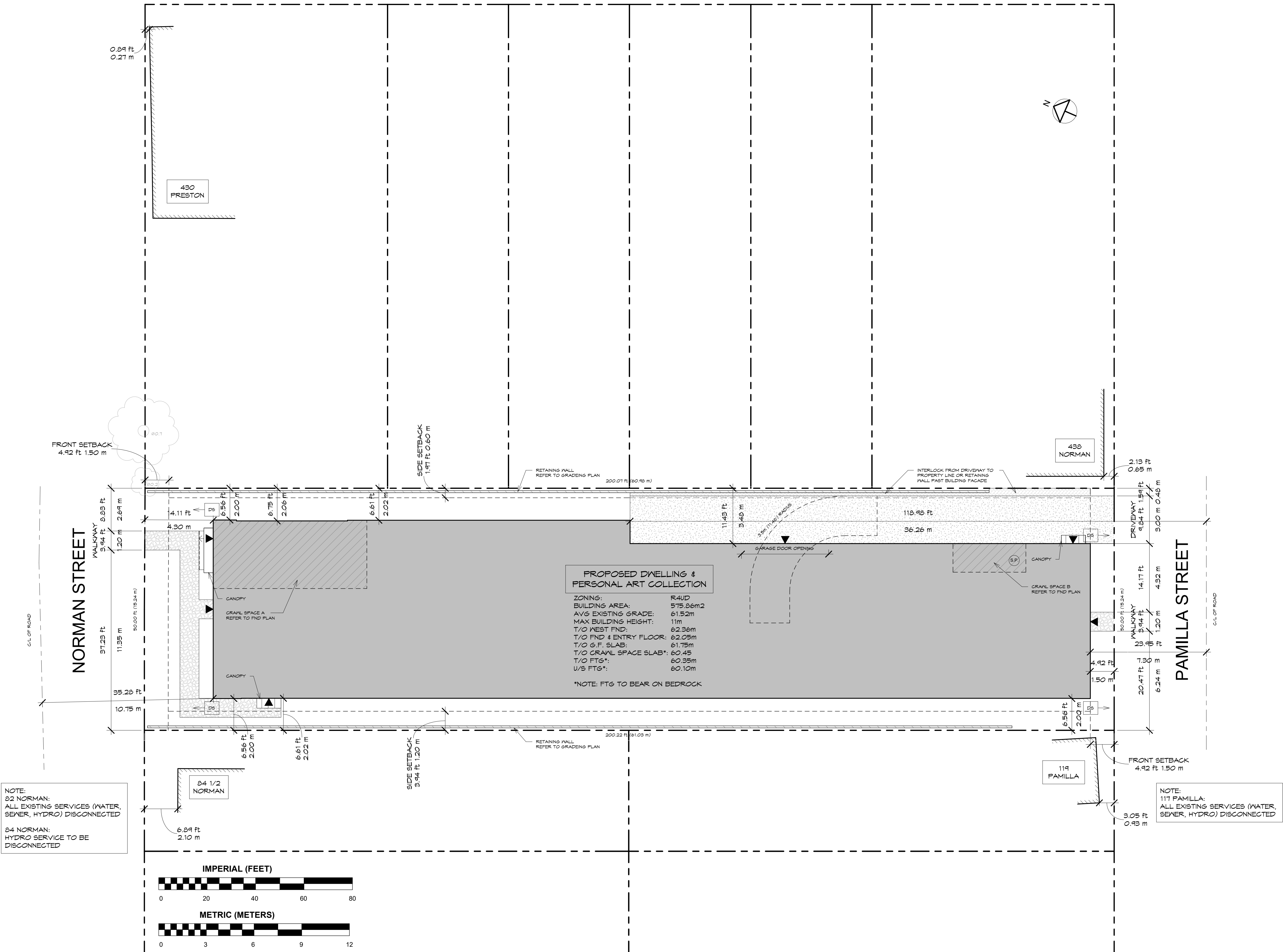
MAY 22 2024

SCALE:  
NOTE: HALF SCALE FOR 11"x17"

A0.0  
GRANT & HENLEY  
DESIGN GROUP

PROPOSED DWELLING & PERSONAL ART COLLECTION  
MINOR VARIANCE - PRELIMINARY - NOT FOR CONSTRUCTION

Committee of Adjustment  
 Received | Reçu le  
 2024-05-27  
 City of Ottawa | Ville d'Ottawa  
 Comité de dérogation



**SITE PLAN**  
**82 NORMAN / 117 PAMILLA**

MAY 22 2024

SCALE: 1" = 10'-0"  
 NOTE: HALF SCALE FOR 11x17"

**A0.1**  
 GRANT HENLEY

PROPOSED DWELLING & PERSONAL ART COLLECTION  
 MINOR VARIANCE - PRELIMINARY - NOT FOR CONSTRUCTION

MATERIALS	
BV	BRICK VANEER
BVS	BRICK VANEER SOLDIER COURSE
CP	CONCRETE PAVING
IRG	IRON ROD GUARD (ROMEO & JULET BALCONY)
MF	METAL FLASHING
MF+MS	METAL FLASHING/EAVESTROUGH, & METAL STRIP VENT
MTR	METAL PROFILE ROOF
MTS	METAL SIDING (NON-COMBUSTABLE)
PCR	PRECAST CONCRETE STEP (T' RI MAX, 10" RUN MIN)

WALL/WINDOW RATIO (ELEVATION TOTALS)			
ELEVATION	EBO	EBF	RATIO
NORTH	33.70 m <sup>2</sup>	81.83 m <sup>2</sup>	41.18%
EAST	17.01 m <sup>2</sup>	349.98 m <sup>2</sup>	4.86%
SOUTH	33.70 m <sup>2</sup>	83.04 m <sup>2</sup>	40.58%
WEST	5.13 m <sup>2</sup>	352.85 m <sup>2</sup>	1.45%
TOTAL	89.53 m <sup>2</sup>	867.70 m <sup>2</sup>	10.32%

Committee of Adjustment  
Received | Reçu le  
2024-05-27  
City of Ottawa | Ville d'Ottawa  
Comité de dérogation



WINDOWS + DOORS AS SHOWN ARE FOR GENERAL DESIGN REFERENCE ONLY. THE OWNER IS RESPONSIBLE FOR THE SELECTION & APPROVAL FOR THE FINAL SIZE, OPERATOR, STYLE, & FINISH OF WINDOWS + DOORS. OWNER IS RESPONSIBLE FOR THE DISTRIBUTION OF THE APPROVED ORDER TO THE INSTALLING CONTRACTOR. GRANT + HENLEY DESIGN GROUP (2465359 ONTARIO INC) IS NOT RESPONSIBLE FOR THE FINAL WINDOWS + DOORS SELECTED & INSTALLED FOR THIS PROJECT

WINDOW SCHEDULE Copy 1			
MARK	WIDTH	HEIGHT	TYPE
W1.1	58"	86"	FIXED- SINGLE
W1.2	46"	86"	FIXED- SINGLE
W1.3	46"	86"	FIXED- SINGLE
W1.4	46"	86"	FIXED- SINGLE
W2.1	46"	86"	FIXED- SINGLE
W2.2	46"	86"	FIXED- SINGLE
W2.3	46"	86"	FIXED- SINGLE
W2.4	46"	86"	FIXED- SINGLE
W2.5	46"	22"	AWNING- SINGLE
W2.6	46"	22"	AWNING- SINGLE
W2.7	24"	62"	CASEMENT- SINGLE
W3.1	22 1/2"	TO 1/2"	SKYLIGHT
W3.2	22 1/2"	TO 1/2"	SKYLIGHT
W3.3	22 1/2"	TO 1/2"	SKYLIGHT
W3.4	22 1/2"	TO 1/2"	SKYLIGHT
W3.5	22 1/2"	TO 1/2"	SKYLIGHT
W3.6	22 1/2"	TO 1/2"	SKYLIGHT
W3.7	22 1/2"	TO 1/2"	SKYLIGHT
W3.8	22 1/2"	TO 1/2"	SKYLIGHT
W3.9	22 1/2"	TO 1/2"	SKYLIGHT
W3.10	22 1/2"	TO 1/2"	SKYLIGHT

EXTERIOR DOOR			
MARK	OPEN WIDTH	OPEN HEIGHT	TYPE
DA	36"	84"	FRENCH DOOR
DB	46"	96"	FOLDING DOOR (NANA WALL)
DC	36"	96"	FRENCH DOOR 3
DD	46"	96"	FOLDING DOOR (NANA WALL)
DF	36"	96"	FRENCH DOOR 2
DG	216"	96"	GARAGE
DH	46"	96"	FOLDING DOOR (NANA WALL)
DJ	46"	96"	FOLDING DOOR (NANA WALL)

INTERIOR DOOR				
MARK	OPEN WIDTH	OPEN HEIGHT	TYPE	NOTES
D11.1	36"	96"	SLAB	C/N 20min FRR & SELF CLOSING DEVICE
D11.2	36"	96"	SLAB	C/N 20min FRR & SELF CLOSING DEVICE
D11.2	144"	96"	OPENING	C/N 20min FIRE SHUTTER
D11.3	36"	96"	SLAB	C/N 20min FRR & SELF CLOSING DEVICE
D11.5	144"	96"	OPENING	C/N 20min FIRE SHUTTER
D11.6	36"	96"	SLAB	C/N 20min FRR & SELF CLOSING DEVICE
D11.7	144"	96"	OPENING	C/N 20min FIRE SHUTTER
D11.8	36"	96"	SLAB	C/N 20min FRR & SELF CLOSING DEVICE
D12.1	36"	96"	SLAB	C/N 20min FRR & SELF CLOSING DEVICE
D12.3	30"	84"	SLAB	C/N 20min FRR & SELF CLOSING DEVICE
D12.19	36"	96"	SLAB	C/N 20min FRR & SELF CLOSING DEVICE
D12.20	30"	84"	SLAB	C/N 20min FRR & SELF CLOSING DEVICE
D13.1	36"	96"	SLAB	C/N 20min FRR & SELF CLOSING DEVICE
D13.2	30"	84"	SLAB	C/N 20min FRR & SELF CLOSING DEVICE
D13.4	36"	96"	SLAB	C/N 20min FRR & SELF CLOSING DEVICE
D13.5	144"	96"	OPENING	C/N 20min FIRE SHUTTER
D13.6	144"	96"	OPENING	C/N 20min FIRE SHUTTER
D13.7	36"	96"	SLAB	C/N 20min FRR & SELF CLOSING DEVICE
D13.8	36"	96"	SLAB	C/N 20min FRR & SELF CLOSING DEVICE
D14.1	36"	96"	SLAB	C/N 20min FRR & SELF CLOSING DEVICE
D14.2	36"	96"	SLAB	C/N 20min FRR & SELF CLOSING DEVICE
D14.3	30"	84"	SLAB	C/N 20min FRR & SELF CLOSING DEVICE
D14.4	60"	84"	BARN	
D14.5	28"	80"	POCKET	
D14.6	28"	84"	SLAB-DOUBLE	
D14.7	36"	80"	SLAB-DOUBLE	

**NORTH ELEVATION  
(NORMAN ST)**

**82 NORMAN / 117 PAMILLA**

MAY 22 2024  
SCALE: 3/8" = 1'-0"  
NOTE: HALF SCALE FOR 11"x17"

**A2.1**  
GRANT + HENLEY

PROPOSED DWELLING & PERSONAL ART COLLECTION  
MINOR VARIANCE - PRELIMINARY - NOT FOR CONSTRUCTION

MATERIALS	
BV	BRICK VANEER
BVS	BRICK VANEER SOLDIER COURSE
CP	CONCRETE PAVING
IRG	IRON ROD GUARD (ROMEIO & JULET BALCONY)
MF	METAL FLASHING
MF+MS	METAL FLASHING/EAVESTROUGH, & METAL STRIP VENT
MTR	METAL PROFILE ROOF
MTS	METAL SIDING (NON-COMBUSTABLE)
PCR	PRECAST CONCRETE STEP (T' RI MAX, 10" RUN MIN)

**Committee of Adjustment**  
 Received | Reçu le  
 2024-05-27  
 City of Ottawa | Ville d'Ottawa  
 Comité de dérogation

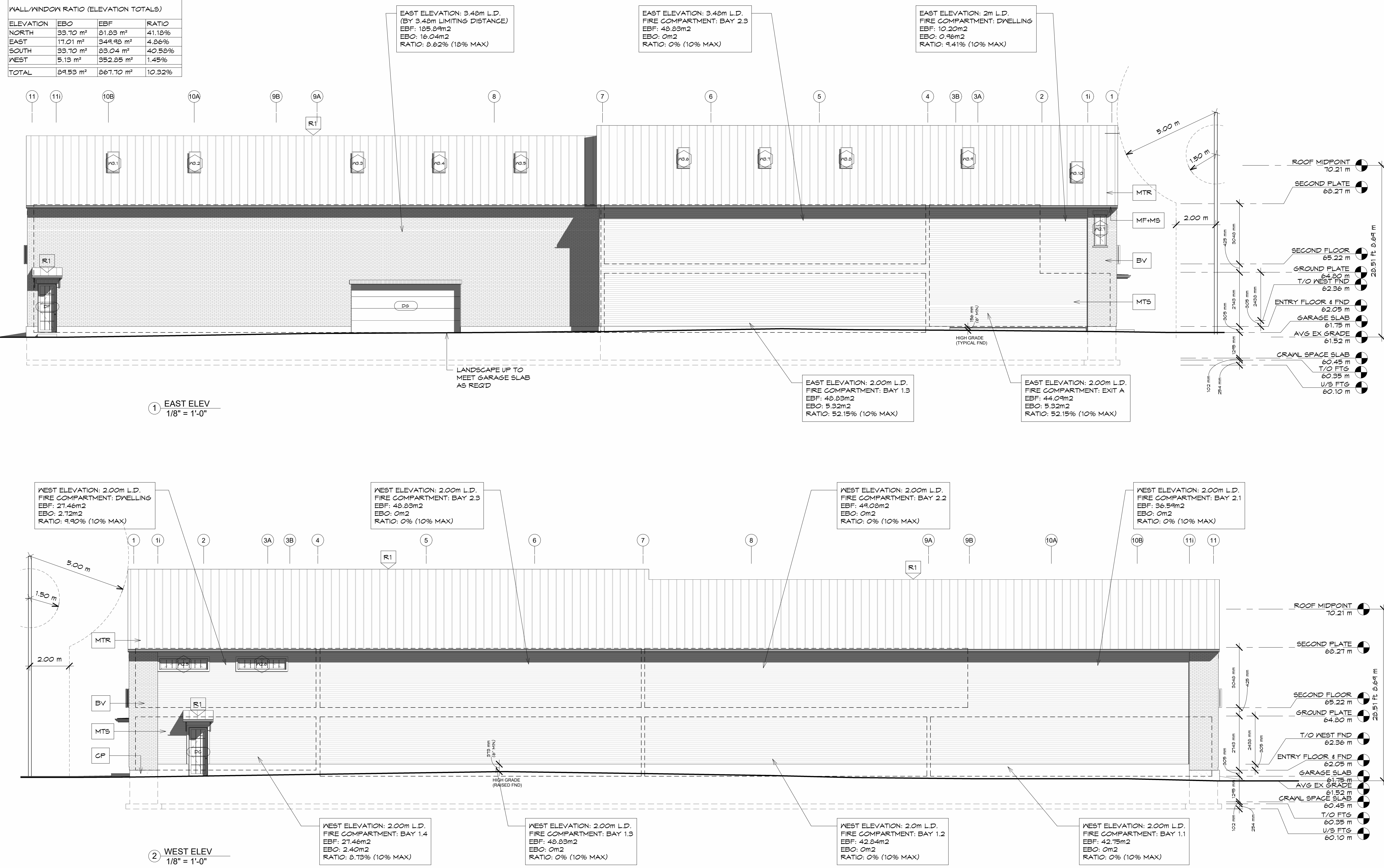
WALL/WINDOW RATIO (ELEVATION TOTALS)			
ELEVATION	EBO	EBF	RATIO
NORTH	33.70 m²	81.83 m²	41.18%
EAST	17.01 m²	349.98 m²	4.86%
SOUTH	33.70 m²	83.04 m²	40.58%
WEST	5.13 m²	352.85 m²	1.45%
TOTAL	84.53 m²	867.70 m²	10.32%

WINDOWS + DOORS AS SHOWN ARE FOR GENERAL DESIGN REFERENCE ONLY. THE OWNER IS RESPONSIBLE FOR THE SELECTION & APPROVAL FOR THE FINAL SIZE, OPERATOR, STYLE, & FINISH OF WINDOWS + DOORS. OWNER IS RESPONSIBLE FOR THE DISTRIBUTION OF THE APPROVED ORDER TO THE INSTALLING CONTRACTOR. GRANT + HENLEY DESIGN GROUP (2465359 ONTARIO INC) IS NOT RESPONSIBLE FOR THE FINAL WINDOWS + DOORS SELECTED & INSTALLED FOR THIS PROJECT

WINDOW SCHEDULE Copy 1			
MARK	WIDTH	HEIGHT	TYPE
W1.1	58"	86"	FIXED- SINGLE
W1.2	96"	86"	FIXED- SINGLE
W1.3	96"	86"	FIXED- SINGLE
W1.4	96"	86"	FIXED- SINGLE
W2.1	96"	86"	FIXED- SINGLE
W2.2	96"	86"	FIXED- SINGLE
W2.3	96"	86"	FIXED- SINGLE
W2.4	96"	86"	FIXED- SINGLE
W2.5	96"	22"	AWNING- SINGLE
W2.6	96"	22"	AWNING- SINGLE
W2.7	24"	62"	CASEMENT- SINGLE
W3.1	22 1/2"	TO 1/2"	SKYLIGHT
W3.2	22 1/2"	TO 1/2"	SKYLIGHT
W3.3	22 1/2"	TO 1/2"	SKYLIGHT
W3.4	22 1/2"	TO 1/2"	SKYLIGHT
W3.5	22 1/2"	TO 1/2"	SKYLIGHT
W3.6	22 1/2"	TO 1/2"	SKYLIGHT
W3.7	22 1/2"	TO 1/2"	SKYLIGHT
W3.8	22 1/2"	TO 1/2"	SKYLIGHT
W3.9	22 1/2"	TO 1/2"	SKYLIGHT
W3.10	22 1/2"	TO 1/2"	SKYLIGHT

EXTERIOR DOOR			
MARK	OPEN WIDTH	OPEN HEIGHT	TYPE
DA	36"	84"	FRENCH DOOR
DB	96"	96"	FOLDING DOOR (NANA WALL)
DC	36"	96"	FRENCH DOOR 3
DD	96"	96"	FOLDING DOOR (NANA WALL)
DF	36"	96"	FRENCH DOOR 2
DG	216"	96"	GARAGE
DH	96"	96"	FOLDING DOOR (NANA WALL)
DJ	96"	96"	FOLDING DOOR (NANA WALL)

INTERIOR DOOR				
MARK	OPEN WIDTH	OPEN HEIGHT	TYPE	NOTES
D11.1	36"	96"	SLAB	C/W 20min FRR & SELF CLOSING DEVICE
D11.2	36"	96"	SLAB	C/W 20min FRR & SELF CLOSING DEVICE
D11.3	144"	96"	OPENING	C/W 20min FIRE SHUTTER
D11.5	36"	96"	SLAB	C/W 20min FRR & SELF CLOSING DEVICE
D11.6	36"	96"	SLAB	C/W 20min FRR & SELF CLOSING DEVICE
D11.7	144"	96"	OPENING	C/W 20min FIRE SHUTTER
D11.8	36"	96"	SLAB	C/W 20min FRR & SELF CLOSING DEVICE
D12.1	36"	96"	SLAB	C/W 20min FRR & SELF CLOSING DEVICE
D12.3	30"	84"	SLAB	C/W 20min FRR & SELF CLOSING DEVICE
D12.19	36"	96"	SLAB	C/W 20min FRR & SELF CLOSING DEVICE
D12.20	30"	84"	SLAB	C/W 20min FRR & SELF CLOSING DEVICE
D13.1	36"	96"	SLAB	C/W 20min FRR & SELF CLOSING DEVICE
D13.2	30"	84"	SLAB	C/W 20min FRR & SELF CLOSING DEVICE
D13.4	36"	96"	SLAB	C/W 20min FRR & SELF CLOSING DEVICE
D13.5	144"	96"	OPENING	C/W 20min FIRE SHUTTER
D13.6	144"	96"	OPENING	C/W 20min FIRE SHUTTER
D13.7	36"	96"	SLAB	C/W 20min FRR & SELF CLOSING DEVICE
D13.8	36"	96"	SLAB	C/W 20min FRR & SELF CLOSING DEVICE
D14.1	36"	96"	SLAB	C/W 20min FRR & SELF CLOSING DEVICE
D14.2	36"	96"	SLAB	C/W 20min FRR & SELF CLOSING DEVICE
D14.3	30"	84"	SLAB	C/W 20min FRR & SELF CLOSING DEVICE
D14.4	60"	84"	BARN	
D14.5	28"	80"	POCKET	
D14.6	28"	84"	SLAB-DOUBLE	
D14.7	36"	80"	SLAB-DOUBLE	



## SIDE ELEVATION

### 82 NORMAN / 117 PAMILLA

MATERIALS	
BV	BRICK VANEER
BVS	BRICK VANEER SOLDIER COURSE
CP	CONCRETE PAVING
IRG	IRON ROD GUARD (ROMEO & JULET BALCONY)
MF	METAL FLASHING
MF+MS	METAL FLASHING/EAVESTROUGH, & METAL STRIP VENT
MTR	METAL PROFILE ROOF
MTS	METAL SIDING (NON-COMBUSTABLE)
PCR	PRECAST CONCRETE STEP (7" RI MAX, 10" RIJN MIN)

WALL/WINDOW RATIO (ELEVATION TOTALS)			
ELEVATION	EBO	EBF	RATIO
NORTH	33.70 m <sup>2</sup>	81.83 m <sup>2</sup>	41.18%
EAST	17.01 m <sup>2</sup>	349.98 m <sup>2</sup>	4.86%
SOUTH	33.70 m <sup>2</sup>	83.04 m <sup>2</sup>	40.58%
WEST	5.13 m <sup>2</sup>	352.85 m <sup>2</sup>	1.45%
TOTAL	89.53 m <sup>2</sup>	867.70 m <sup>2</sup>	10.32%

Committee of Adjustment  
 Received | Reçu le  
 2024-05-27  
 City of Ottawa | Ville d'Ottawa  
 Comité de dérogation



WINDOWS + DOORS AS SHOWN ARE FOR GENERAL DESIGN REFERENCE ONLY. THE OWNER IS RESPONSIBLE FOR THE SELECTION & APPROVAL FOR THE FINAL SIZE, OPERATOR, STYLE, & FINISH OF WINDOWS + DOORS. OWNER IS RESPONSIBLE FOR THE DISTRIBUTION OF THE APPROVED ORDER TO THE INSTALLING CONTRACTOR. GRANT + HENLEY DESIGN GROUP (24653591 ONTARIO INC) IS NOT RESPONSIBLE FOR THE FINAL WINDOWS + DOORS SELECTED & INSTALLED FOR THIS PROJECT

WINDOW SCHEDULE Copy 1			
MARK	WIDTH	HEIGHT	TYPE
W1.1	58"	86"	FIXED- SINGLE
W1.2	46"	86"	FIXED- SINGLE
W1.3	46"	86"	FIXED- SINGLE
W1.4	46"	86"	FIXED- SINGLE
W2.1	46"	86"	FIXED- SINGLE
W2.2	46"	86"	FIXED- SINGLE
W2.3	46"	86"	FIXED- SINGLE
W2.4	46"	86"	FIXED- SINGLE
W2.5	46"	22"	AWNING- SINGLE
W2.6	46"	22"	AWNING- SINGLE
W2.7	24"	62"	CASEMENT- SINGLE
W3.1	22 1/2"	TO 1/2"	SKYLIGHT
W3.2	22 1/2"	TO 1/2"	SKYLIGHT
W3.3	22 1/2"	TO 1/2"	SKYLIGHT
W3.4	22 1/2"	TO 1/2"	SKYLIGHT
W3.5	22 1/2"	TO 1/2"	SKYLIGHT
W3.6	22 1/2"	TO 1/2"	SKYLIGHT
W3.7	22 1/2"	TO 1/2"	SKYLIGHT
W3.8	22 1/2"	TO 1/2"	SKYLIGHT
W3.9	22 1/2"	TO 1/2"	SKYLIGHT
W3.10	22 1/2"	TO 1/2"	SKYLIGHT

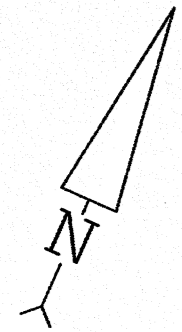
EXTERIOR DOOR			
MARK	OPEN WIDTH	OPEN HEIGHT	TYPE
DA	36"	84"	FRENCH DOOR
DB	46"	46"	FOLDING DOOR (NANA WALL)
DC	36"	46"	FRENCH DOOR 3
DD	46"	46"	FOLDING DOOR (NANA WALL)
DF	36"	46"	FRENCH DOOR 2
DG	216"	46"	GARAGE
DH	46"	46"	FOLDING DOOR (NANA WALL)
DJ	46"	46"	FOLDING DOOR (NANA WALL)

INTERIOR DOOR				
MARK	OPEN WIDTH	OPEN HEIGHT	TYPE	NOTES
D11.1	36"	46"	SLAB	C/N 20min FRR & SELF CLOSING DEVICE
D11.2	36"	46"	SLAB	C/N 20min FRR & SELF CLOSING DEVICE
D11.2	144"	46"	OPENING	C/N 20min FIRE SHUTTER
D11.3	36"	46"	SLAB	C/N 20min FRR & SELF CLOSING DEVICE
D11.5	144"	46"	OPENING	C/N 20min FIRE SHUTTER
D11.6	36"	46"	SLAB	C/N 20min FRR & SELF CLOSING DEVICE
D11.7	144"	46"	OPENING	C/N 20min FIRE SHUTTER
D11.8	36"	46"	SLAB	C/N 20min FRR & SELF CLOSING DEVICE
D12.1	36"	46"	SLAB	C/N 20min FRR & SELF CLOSING DEVICE
D12.3	30"	84"	SLAB	C/N 20min FRR & SELF CLOSING DEVICE
D12.19	36"	46"	SLAB	C/N 20min FRR & SELF CLOSING DEVICE
D12.20	30"	84"	SLAB	C/N 20min FRR & SELF CLOSING DEVICE
D13.1	36"	46"	SLAB	C/N 20min FRR & SELF CLOSING DEVICE
D13.2	30"	84"	SLAB	C/N 20min FRR & SELF CLOSING DEVICE
D13.4	36"	46"	SLAB	C/N 20min FRR & SELF CLOSING DEVICE
D13.5	144"	46"	OPENING	C/N 20min FIRE SHUTTER
D13.6	144"	46"	OPENING	C/N 20min FIRE SHUTTER
D13.7	36"	46"	SLAB	C/N 20min FRR & SELF CLOSING DEVICE
D13.8	36"	46"	SLAB	C/N 20min FRR & SELF CLOSING DEVICE
D14.1	36"	46"	SLAB	C/N 20min FRR & SELF CLOSING DEVICE
D14.2	36"	46"	SLAB	C/N 20min FRR & SELF CLOSING DEVICE
D14.3	30"	84"	SLAB	
D14.4	60"	84"	BARN	
D14.5	28"	80"	POCKET	
D14.6	28"	84"	SLAB-DOUBLE	
D14.7	36"	80"	SLAB-DOUBLE	

## SOUTH ELEVATION (PAMILLA ST)

82 NORMAN / 117 PAMILLA

MAY 22 2024 SCALE: 3/8" = 1'-0" <small>NOTE: HALF SCALE FOR 11"x17"</small>	<b>A2.3</b> <b>GRANT HENLEY</b> <small>DESIGN GROUP</small>
---	---

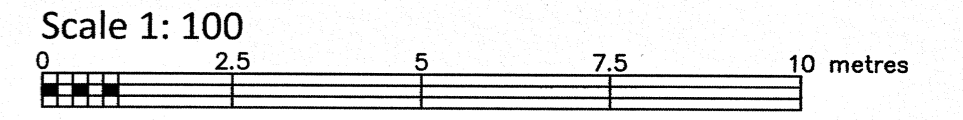


Committee of Adjustment  
Received | Reçu le  
2024-05-27  
City of Ottawa | Ville d'Ottawa  
Comité de dérogation

TOPOGRAPHIC PLAN OF SURVEY OF

PART OF LOT 1512  
REGISTERED PLAN 38  
CITY OF OTTAWA

FARLEY, SMITH & DENIS SURVEYING LTD. 2021



Metric Note  
Distances and coordinates on this plan are in metres and can be converted to feet by dividing by 0.3048.

Distance Note  
Distances shown on this plan are ground distances and can be converted to grid distances by multiplying by the combined scale factor of 0.99994.

Bearing Note  
Bearings are grid, referred to the southerly limit of Norman Street having a bearing of N 6° 23' 25" E and are referred to the Central Meridian of MTM Zone 9 (76° 30' West Longitude) Nad-83 (Original).

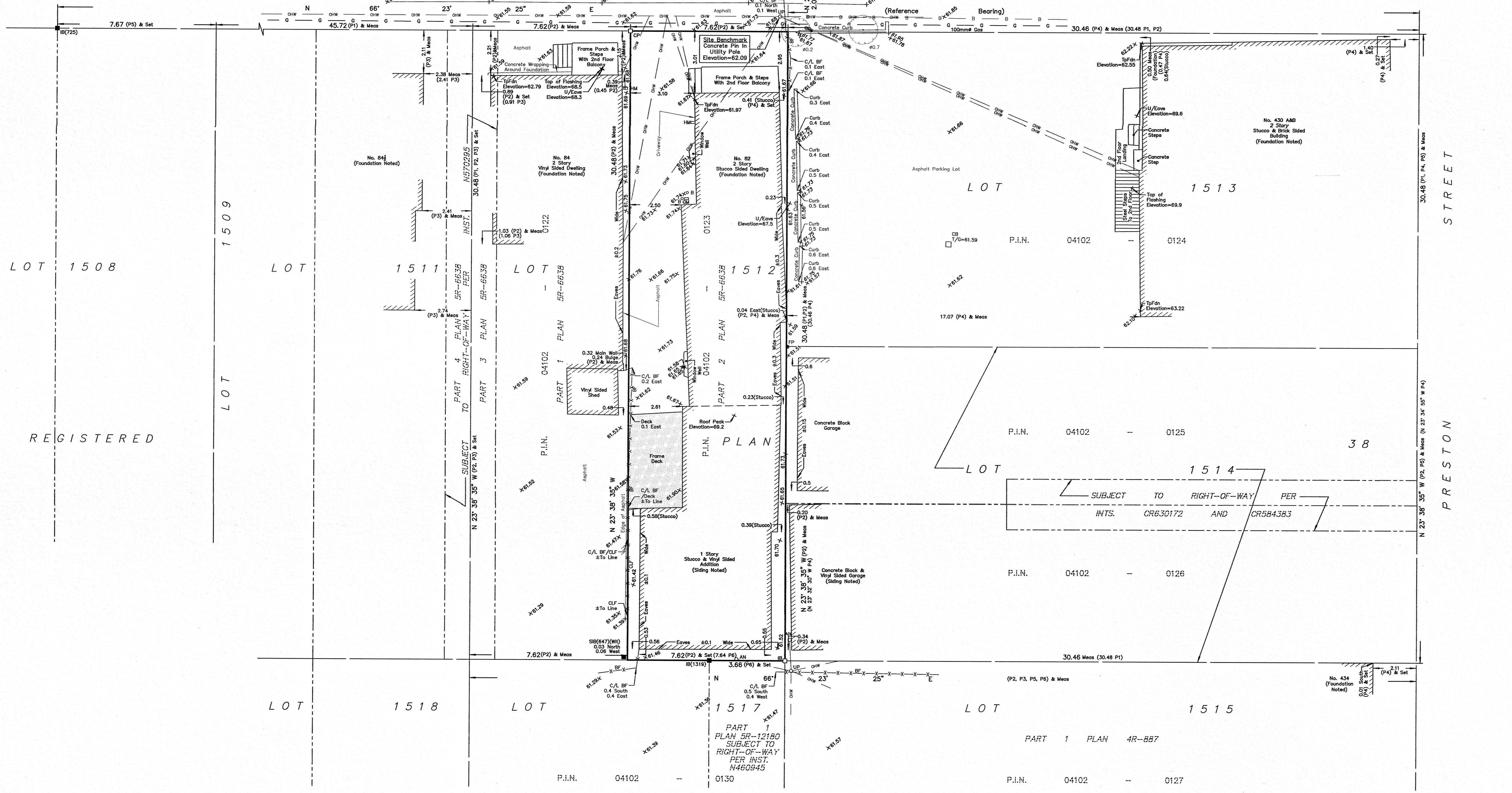
For bearing comparisons, a rotation of 0°33'35" counter-clockwise was applied to bearings on P2, P3, P5 & P6.  
For bearing comparisons, a rotation of 0°29'55" counter-clockwise was applied to bearings on P4.

Elevation Notes  
1. Elevations shown are geodetic and are referred to Geodetic Datum CGVD-1928 :1978. (See FSD File No. 42-99)  
2. It is the responsibility of the user of this information to verify that the job benchmark has not been altered or disturbed and that its relative elevation and description agrees with the information shown on this drawing.

Utility Notes  
1. This drawing cannot be accepted as acknowledging all of the utilities and it will be the responsibility of the user to contact the respective utility authorities for confirmation.  
2. Only visible surface utilities were located.  
3. Underground utility data derived from City of Ottawa utility sheet reference: 3278p&p1, 3278p&p2, 15072p&p17 & F-09-16.  
4. Sanitary and storm sewer grades and inverts were derived from: Field measurement.  
5. A field location of underground plant by the pertinent utility authority is mandatory before any work involving breaking ground, probing, excavating, etc.

Notes & Legend

—	Denotes
—	Survey Monument Planted
—	Survey Monument Found
—	Standard Iron Bar
—	Short Standard Iron Bar
—	Iron Bar
(Wit)	Witness
Meas	Measured
(P1)	Registered Plan 38
(P2)	Plan 5R-6638
(P3)	Plan by (647) dated April 29, 1985
(P4)	Plan by (1287) dated March 25, 1999 (Job No. 42-99)
(P5)	Plan by (AOG) dated September 20, 2005 (Job No. 6574-05)
(P6)	Plan 5R-12180
○ MH-S	Maintenance Hole (Combination)
— w	Underground Water
— g	Underground Gas
— s	Underground Sewer
—	Underground Bell
—	Overhead Wires
○ UP	Utility Pole
○ AN	Anchor
□ CB	Catch Basin
□ GM	Gas Meter
□ HM	Hydro Meter
□ B	Bollard
○ FP	Flag Pole
○ D	Diameter
— BF	Board Fence
— CLF	Chain Link Fence
Inv.	Invert
T/G	Top of Grate
U/Eave	Underside of Eave
Trfdn	Top of Foundation
C/L	Centreline
+65.00	Location of Elevations
+65.00	Top of Concrete Curb Elevation
—	Property Line
○	Deciduous Tree - The symbol shown denotes location and trunk diameter only. Size of its' root system/overhead canopy may be smaller/larger than the symbol size depicted on this plan.



TOPOGRAPHIC DATA WAS COLLECTED UNDER WINTER CONDITIONS. SNOW COVER AND ICE PRECLUDE DETERMINING LOCATION AND ELEVATION OF SOME TOPOGRAPHICAL DATA THAT IS OTHERWISE VISIBLE.  
WARNING: NO PERSON MAY COPY, REPRODUCE, DISTRIBUTE OR ALTER THIS PLAN IN WHOLE OR IN PART WITHOUT THE WRITTEN PERMISSION OF FARLEY, SMITH & DENIS SURVEYING LTD. © FARLEY, SMITH & DENIS SURVEYING LTD., 2021.

Surveyor's Certificate  
I certify that:  
1. This survey and plan are correct and in accordance with the Surveys Act, the Surveyors Act and the Regulations made under them.  
2. The survey was completed on the 23rd day of March, 2021.  
Date: April 8/21  
Emad Alfaraj  
Ontario Land Surveyor

FARLEY, SMITH & DENIS SURVEYING LTD.

ASSOCIATION OF ONTARIO LAND SURVEYORS  
PLAN SUBMISSION FORM  
V-10919  
THIS PLAN IS NOT VALID UNLESS IT IS AN EMBOSSED ORIGINAL COPY ISSUED BY THE SURVEYOR  
In accordance with Regulation 1026, Section 29 (3).  
ONTARIO LAND SURVEYORS  
CANADA LAND SURVEYORS  
190 COLONNADE ROAD, OTTAWA, ONTARIO K2E 7J5  
TEL. (613) 727-8226 FAX. (613) 727-1826

**SURVEYOR'S REAL PROPERTY REPORT**  
**PART 1** Plan of  
**LOT 1517**  
**REGISTERED PLAN 38**  
**CITY OF OTTAWA**  
 Surveyed by Annis, O'Sullivan, Vollebek Ltd.

Scale 1 : 100

**Metric**  
 DISTANCES SHOWN ON THIS PLAN ARE IN METRES AND CAN BE CONVERTED TO FEET BY DIVIDING BY 0.3048

**Surveyor's Certificate**  
 I CERTIFY THAT:  
 1. This survey and plan are correct and in accordance with the Surveys Act and the Surveyors Act and the regulations made under them.  
 2. The survey was completed on the 12 day of October, 2021.

Dec 6 2021  
 Date  
 E. H. Heveyer  
 Ontario Land Surveyor

**PART 2**  
 THIS PLAN MUST BE READ IN CONJUNCTION WITH SURVEY REPORT DATED: December 6, 2021

ANNIS, O'SULLIVAN, VOLLEBEK LTD. grants to \_\_\_\_\_ (The Client), their solicitors, mortgagees, and other related parties, permission to use original, signed, sealed copies of the Surveyor's Real Property Report in transactions involving The Client.

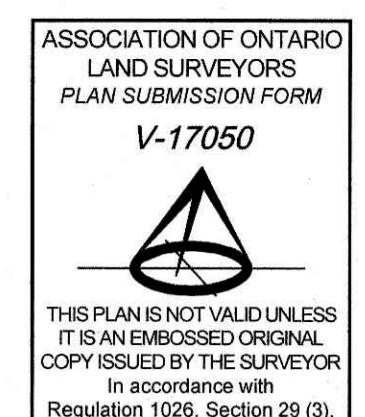
**Notes & Legend**

Denotes	
—□—	Survey Monument Planted
—■—	Survey Monument Found
SIB	Standard Iron Bar
SSIB	Short Standard Iron Bar
IB	Iron Bar
(WIT)	Witness
Meas.	Measured
(AOG)	Annis, O'Sullivan, Vollebek Ltd.
(P1)	Registered Plan 38
(P2)	(AOG) Plan February 24, 2010
(P3)	Plan SR-12180
(P4)	(AOG) Plan September 20, 2005
(P5)	(1287) Plan January 28, 2002
—S—	Underground Sanitary Sewer
—W—	Underground Water
—G—	Underground Gas
—OW—	Overhead Wires
○ UP	Utility Pole
• AN	Anchor
• B	Bollard
BF	Board Fence
∅	Diameter
+ 65.00	Location of Elevations
+ 66.00	Top of Concrete Curb Elevation
C/L	Centreline
• SP	Water Stand Post
Fdn.	Foundation

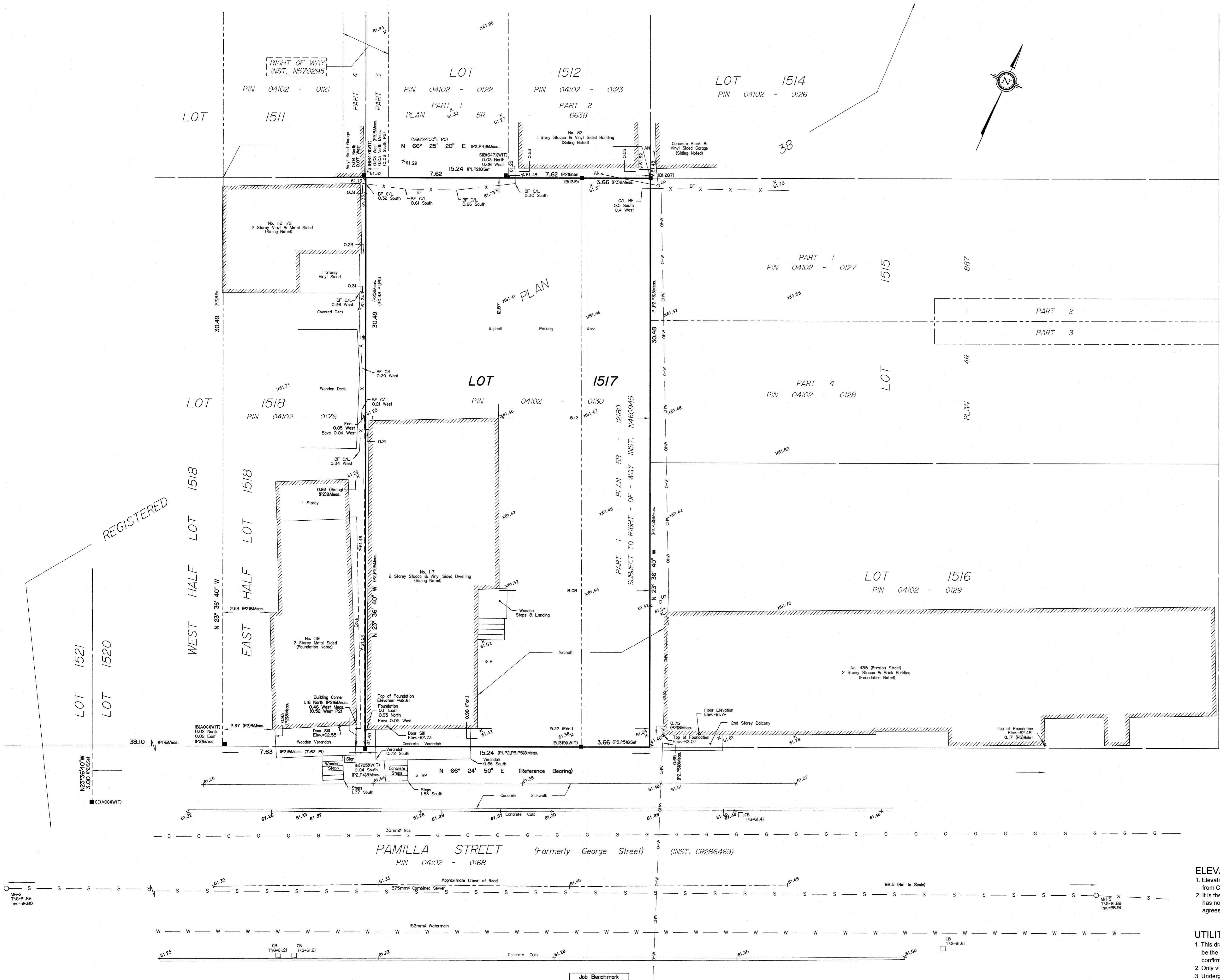
Bearings are grid, derived from Can-Net 2016 Real Time Network GPS observations, MTM Zone 9 (76°30' West Longitude) NAD-83 (original).  
 For bearing comparisons, a rotation of 0°31'40" counter-clockwise was applied to bearings on P2, P3, P4, P5.

**ELEVATION NOTES**  
 1. Elevations shown are geodetic and are referred to the CGVD28 geodetic datum, derived from City of Ottawa benchmark No.3610 having an elevation of 66.067 metres.  
 2. It is the responsibility of the user of this information to verify that the job benchmark has not been altered or disturbed and that its relative elevation and description agrees with the information shown on this drawing.

**UTILITY NOTES**  
 1. This drawing cannot be accepted as acknowledging all of the utilities and it will be the responsibility of the user to contact the respective utility authorities for confirmation.  
 2. Only visible surface utilities were located.  
 3. Underground utility data derived from City of Ottawa utility sheet reference F-09-20  
 4. Combined sewer grades and inverts were derived from City of Ottawa plan No. 5039 (Sheet 3 of 5)  
 5. A field location of underground plant by the pertinent utility authority is mandatory before any work involving breaking ground, probing, excavating etc.



© Annis, O'Sullivan, Vollebek Ltd. 2021. "THIS PLAN IS PROTECTED BY COPYRIGHT"  
**ANNIS, O'SULLIVAN, VOLLEBEK LTD.**  
 14 Concourse Gate, Suite 500  
 Nepean, Ont. K2E 7S5  
 Phone: (613) 727-0850 / Fax: (613) 727-1079  
 Email: napsa@osvl.com  
 Ontario Land Surveyors License No. 20296-21 L1917 P.38 D.F.



Committee of Adjustment  
 Received | Reçu le  
 2024-05-27  
 City of Ottawa | Ville d'Ottawa  
 Comité de dérogation

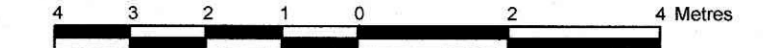
M-5  
 TYPED  
 Inv. 59.80

Job Benchmark  
 Spike in Wooden LP  
 Elevation = 61.65

PART OF LOT 1512  
REGISTERED PLAN 38  
CITY OF OTTAWA

Surveyed by Annis, O'Sullivan, Vollebek Ltd.

Scale 1 : 100



Metric  
DISTANCES SHOWN ON THIS PLAN ARE IN METRES AND  
CAN BE CONVERTED TO FEET BY DIVIDING BY 0.3048

Surveyor's Certificate

- I CERTIFY THAT:
1. This survey and plan are correct and in accordance with the Surveys Act and the Surveyors Act and the regulations made under them.
2. The survey was completed on the 28th day of August, 2023.

Sept 22, 2023 Date

Jamie Leslie Ontario Land Surveyor

Notes & Legend

Table with 2 columns: Denotes and Descriptions. Includes symbols for Survey Monument Planted, Standard Iron Bar, Short Standard Iron Bar, Iron Bar, Witness, Measured, Annis, O'Sullivan, Vollebek Ltd., Registered Plan 38, (AOG) Plan December 6, 2021, (1692) Plan April 8, 2021, Underground Sanitary Sewer, Underground Water, Underground Gas, Underground Bell, Overhead Wires, Utility Pole, Catch Basin, Catch Basin Inlet, Gas Meter, Hydro Meter, Maintenance Hole (Sanitary), Bollard, Water Stand Post, Board Fence, Diameter, Location of Elevations, Top of Concrete Curb Elevation, Eave Elevations, Centreline, Top of Grate, Underside of Eave, Top of Foundation, Invert, Edge of Asphalt.

Bearings are grid, derived from Can-Net 2016 Real Time Network GPS observations, MTM Zone 9 (76°30' West Longitude) NAD-83 (original).

For bearing comparisons, a rotation of 0°01'55" counter-clockwise was applied to bearings on P2.

ELEVATION NOTES

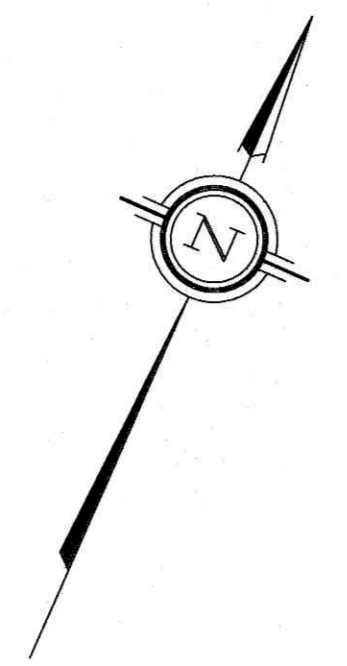
- 1. Elevations shown are geodetic and are referred to the CGVD28 geodetic datum.
2. It is the responsibility of the user of this information to verify that the job benchmark has not been altered or disturbed and that its relative elevation and description agrees with the information shown on this drawing.

UTILITY NOTES

- 1. This drawing cannot be accepted as acknowledging all of the utilities and it will be the responsibility of the user to contact the respective utility authorities for confirmation.
2. Only visible surface utilities were located.
3. Underground utility data derived from City of Ottawa utility sheet reference : 3278p & p1, 3278p & p2, 15072p & p17 & F-09-16.
4. Combined sewer grades and inverts were derived from field measurements.
5. A field location of underground plant by the pertinent utility authority is mandatory before any work involving breaking ground, probing, excavating etc.

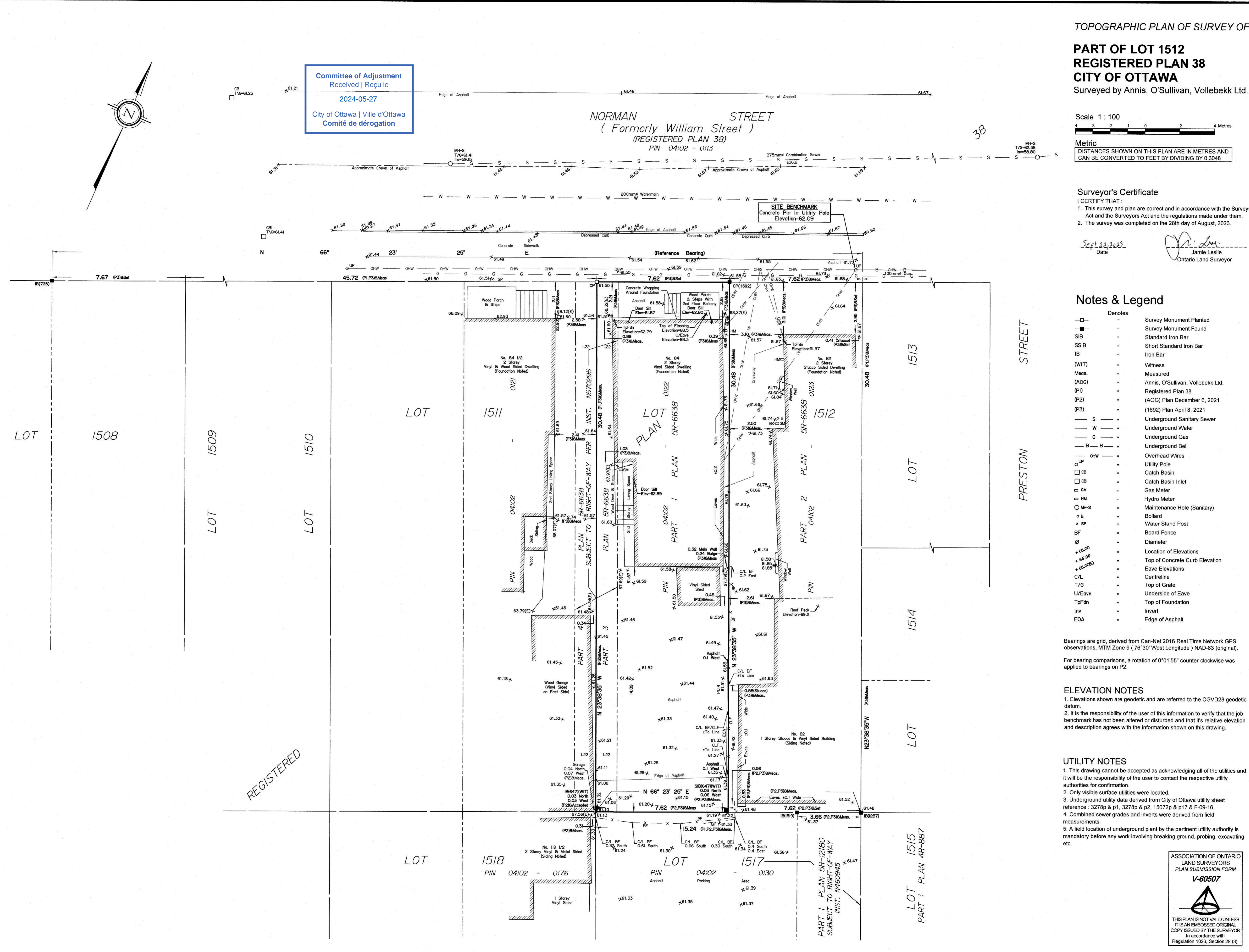
ASSOCIATION OF ONTARIO LAND SURVEYORS PLAN SUBMISSION FORM V-60507

THIS PLAN IS NOT VALID UNLESS IT IS AN EMBOSSED ORIGINAL COPY ISSUED BY THE SURVEYOR In accordance with Regulation 1026, Section 29 (3).



Committee of Adjustment Received | Reçu le 2024-05-27 City of Ottawa | Ville d'Ottawa Comité de dérogation

NORMAN STREET (Formerly William Street) (REGISTERED PLAN 38) PIN 04102 - 0113



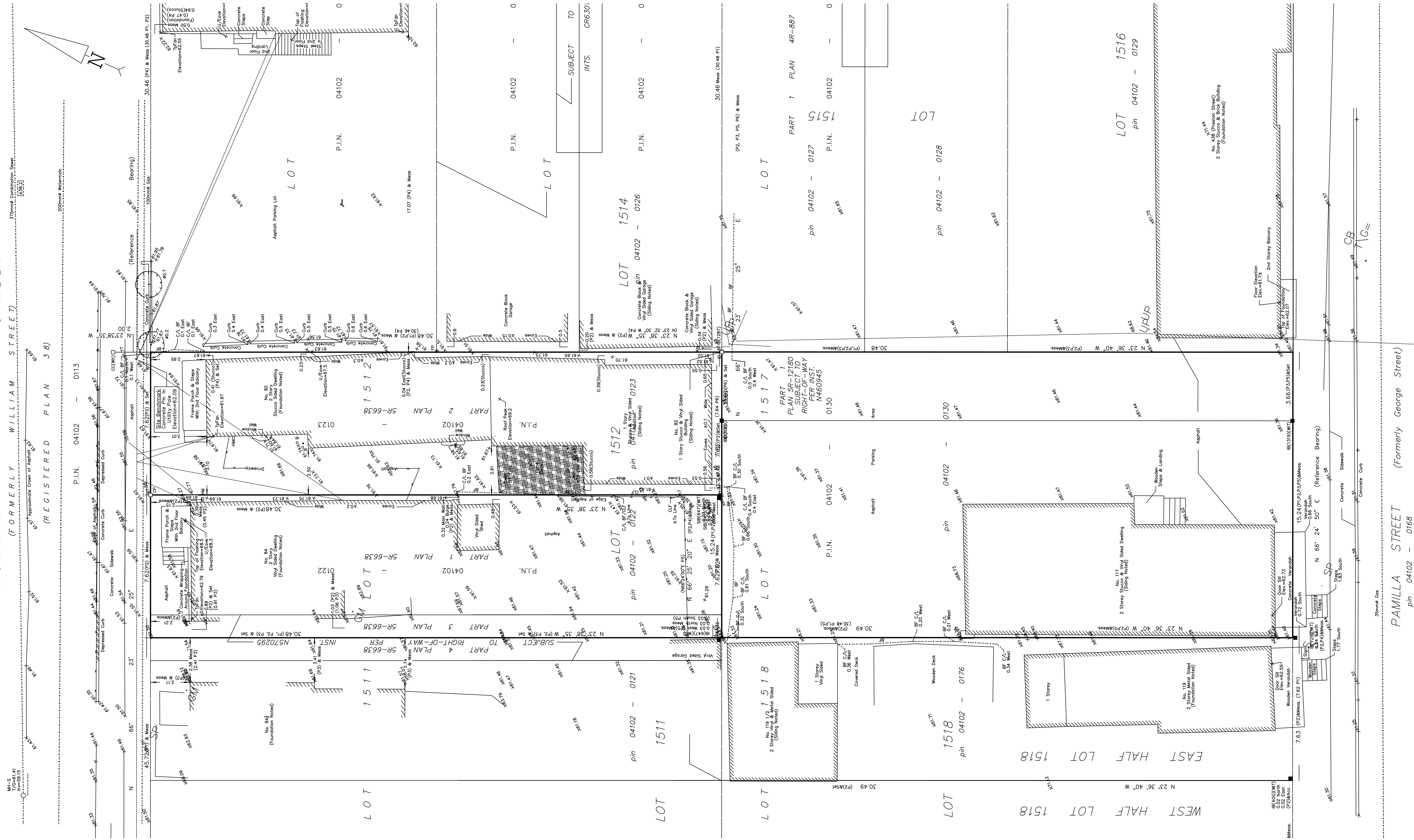
REGISTERED



NORMAN STREET  
(FORMERLY WILLIAM STREET)

(REGISTERED PLAN 38)

P.I.N. 04102 - 0113



Committee of Adjustment  
Received | Reçu le  
2024-05-27  
City of Ottawa | Ville d'Ottawa  
Comité de dérogation

SURVEY - COMBINED

82 NORMAN / 117 PAMILLA

MAY 22 2024

SCALE: 1/8" = 1'-0"  
NOTE: HALF SCALE FOR 11"x17"

SP1.0  
GRANT HENLEY

PROPOSED DWELLING & PERSONAL ART COLLECTION  
MINOR VARIANCE - PRELIMINARY - NOT FOR CONSTRUCTION