

13 November 2023 12:33 PM
W:\active\16164607\Reference_Plan\Drawing\16164607-114_d2_c3d.dwg

Committee of Adjustment
Received | Reçu le

2024-07-10

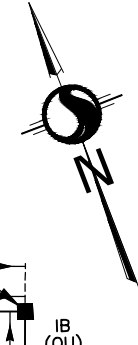
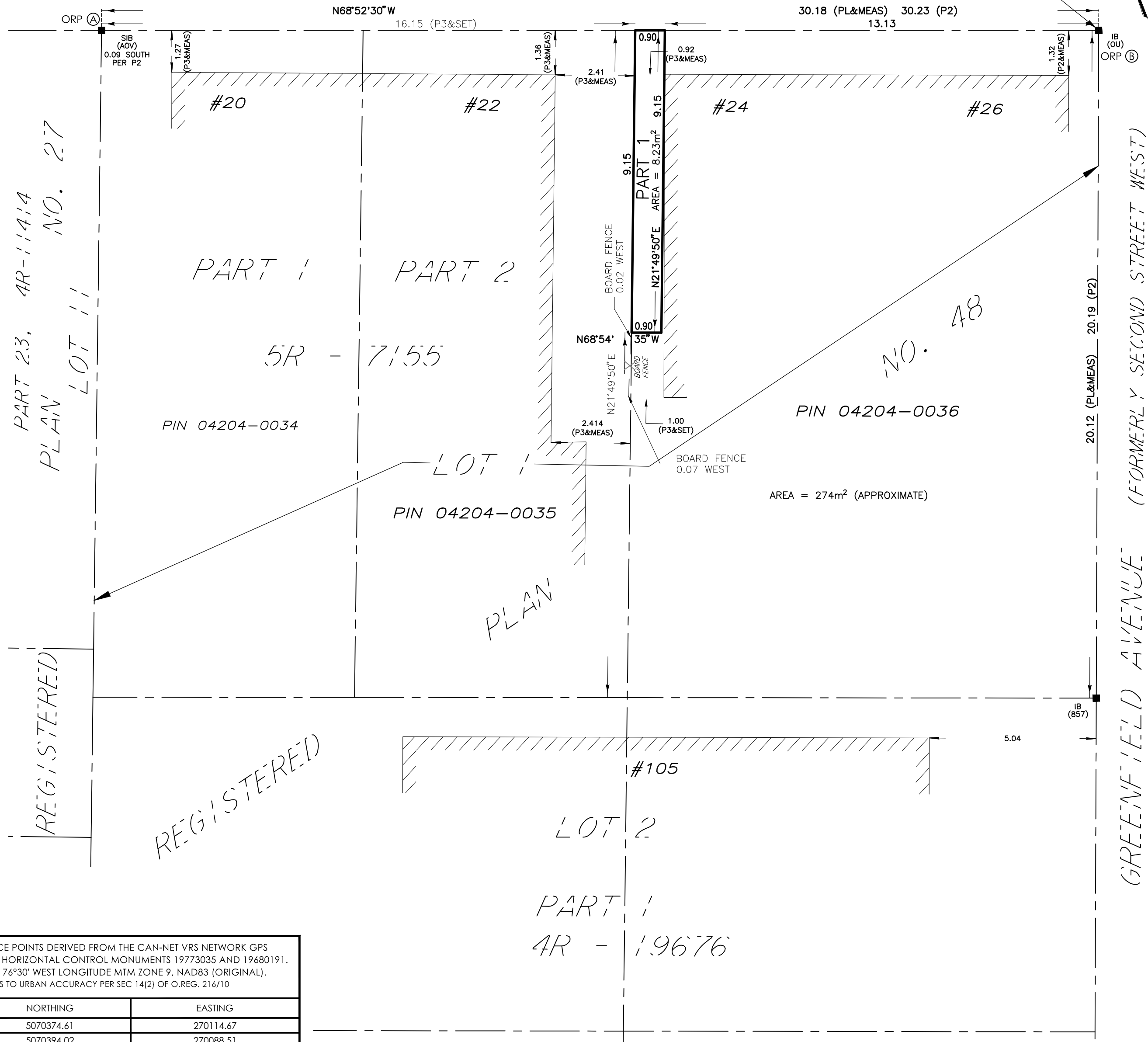
City of Ottawa | Ville d'Ottawa
Comité de dérogation

SCHEDULE			
PART	LOT	REGISTERED PLAN	PIN
1	PART OF LOT 1 (NORTH GREENFIELD AVE.)	48	PART OF PIN 04204-0036

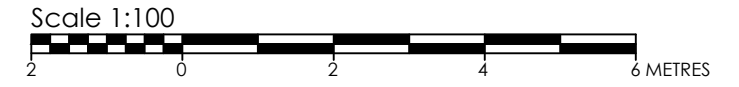
CONCORD STREET (FORMERLY CENTRE STREET PER PL)

PIN 04125-0070

MOST NORTHEAST CORNER LOT 1
REGISTERED PLAN NO. 48



PLAN OF SURVEY OF
**PART OF LOT 1 (NORTH GREENFIELD AVE.)
REGISTERED PLAN NO. 48**
(GEOGRAPHIC TOWNSHIP OF NEPEAN)
CITY OF OTTAWA



Stantec Geomatics Ltd.
THE INTENDED PLOT SIZE OF THIS PLAN IS 609mm IN WIDTH BY 457mm IN HEIGHT WHEN PLOTTED AT A SCALE OF 1: 100.

METRIC CONVERSION
DISTANCES AND COORDINATES SHOWN ON THIS PLAN ARE IN METRES AND CAN BE CONVERTED TO FEET BY DIVIDING BY 0.3048

LEGEND

Symbol	DENOTES	FOUND MONUMENTS
■	FOUND MONUMENTS	FOUND MONUMENTS
□	SET MONUMENTS	SET MONUMENTS
IB	IRON BAR	IRON BAR
IB ^Ø	ROUND IRON BAR	ROUND IRON BAR
SIB	STANDARD IRON BAR	STANDARD IRON BAR
SSIB	SHORT STANDARD IRON BAR	SHORT STANDARD IRON BAR
CC	CUT CROSS	CUT CROSS
CP	CONCRETE PIN	CONCRETE PIN
WIT	WITNESS	WITNESS
PIN	PROPERTY IDENTIFICATION NUMBER	PROPERTY IDENTIFICATION NUMBER
M/MEAS	MEASURED	MEASURED
PROP	PROPORTIONED	PROPORTIONED
OU	ORIGIN UNKNOWN	ORIGIN UNKNOWN
STANTEC	STANTEC GEOMATICS LTD.	STANTEC GEOMATICS LTD.
PL	REGISTERED PLAN NO. 48	REGISTERED PLAN NO. 48
P1	PLAN 4R-12705	PLAN 4R-12705
P2	PLAN 4R-19676	PLAN 4R-19676
P3	PLAN 5R-7155	PLAN 5R-7155

BEARING NOTE
BEARINGS ARE GRID, DERIVED FROM CAN-NET VRS NETWORK GPS OBSERVATIONS ON NCC HORIZONTAL CONTROL MONUMENTS 19773035 AND 19680191, CENTRAL MERIDIAN, 76° 30' WEST LONGITUDE MTM ZONE 9, NAD83 (ORIGINAL).

19773035 N:5006060.42 E:324888.04
19680191 N:5033564.26 E:388064.94

SURVEYOR'S CERTIFICATE
I CERTIFY THAT:
1. THIS SURVEY AND PLAN ARE CORRECT AND IN ACCORDANCE WITH THE SURVEYS ACT, THE SURVEYORS ACT AND THE LAND TITLES ACT AND THE REGULATIONS MADE UNDER THEM.
2. THE SURVEY WAS COMPLETED ON THE 27th DAY OF JUNE, 2022.

OBSERVED REFERENCE POINTS DERIVED FROM THE CAN-NET VRS NETWORK GPS OBSERVATIONS ON NCC HORIZONTAL CONTROL MONUMENTS 19773035 AND 19680191, CENTRAL MERIDIAN, 76°30' WEST LONGITUDE MTM ZONE 9, NAD83 (ORIGINAL), COORDINATES TO URBAN ACCURACY PER SEC 14(2) OF O.REG. 216/10

POINT ID	NORTHING	EASTING
Ⓐ	5070374.61	270114.67
Ⓑ	5070394.02	270088.51

COORDINATES CANNOT, IN THEMSELVES, BE USED TO RE-ESTABLISH CORNERS OR BOUNDARIES SHOWN ON THIS PLAN.

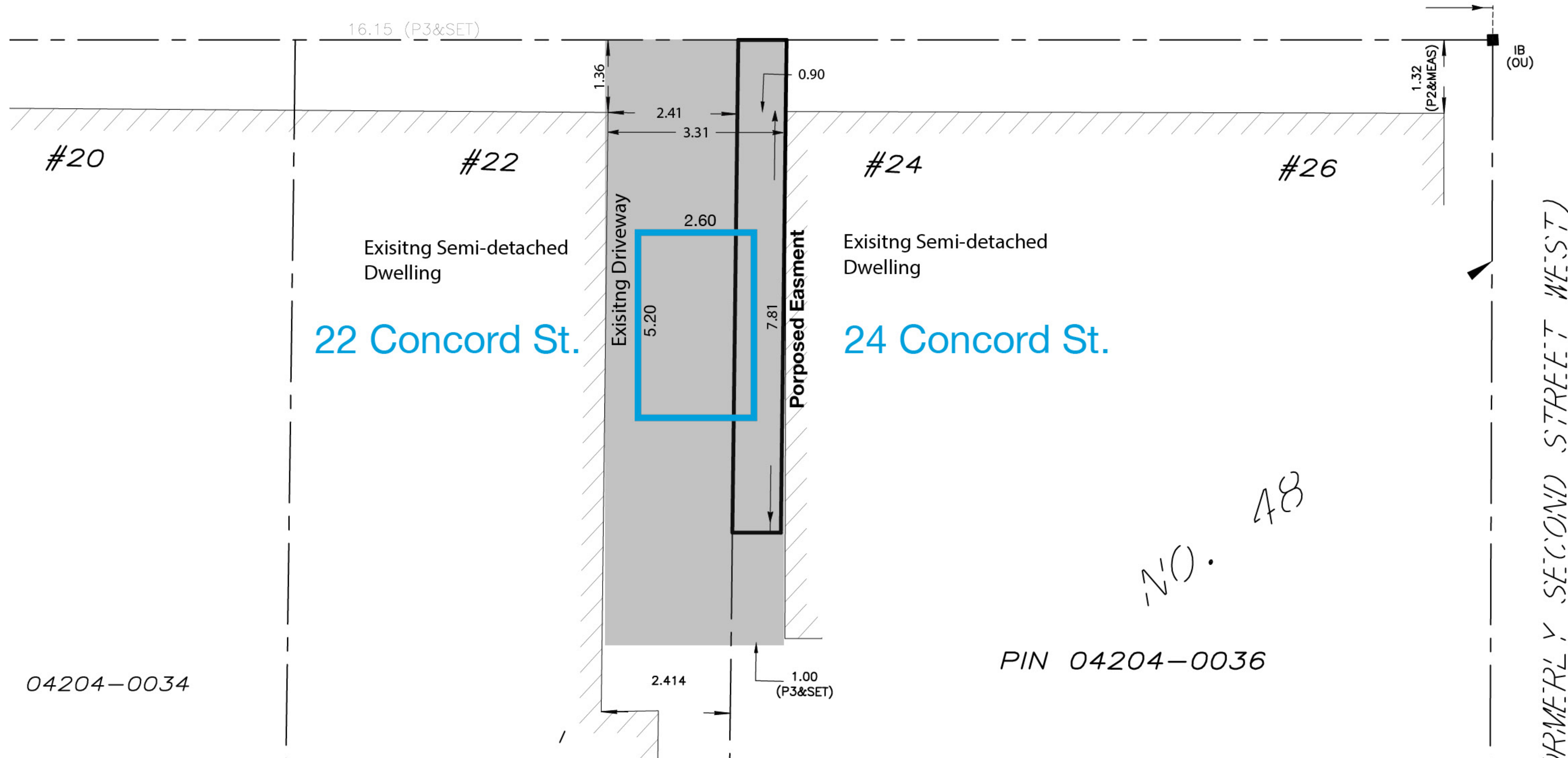
DATE _____ R. G. BENNETT
ONTARIO LAND SURVEYOR
THIS PLAN OF SURVEY RELATES TO AOLS PLAN SUBMISSION FORM NUMBER V-39297.

Stantec Geomatics Ltd.
CANADA LANDS SURVEYORS
ONTARIO LAND SURVEYORS
1331 CLYDE AVENUE, SUITE 300
OTTAWA, ONTARIO, K2C 3G4
TEL. 613.722.4420
stantec.com

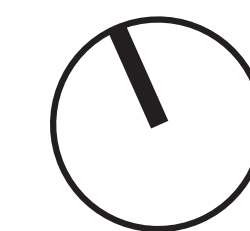
DRAWN: TMT CHECKED: GB PM: AB FIELD: ES PROJECT No.: 161614607-114

22 & 24 CONCORD STREET NORH
SITE PLAN

CONCORD STREET



04204-0034



SITE PLAN - Parking Space

FOTENN
Planning + Design

OTTAWA
396 Cooper Street,
Suite 300
Ottawa, ON K2P 2H7
T 613.730.5709