

FORCED ROAD (KNOWN AS REGIONAL ROAD 2 AND DONNELLY DRIVE)
 PIN 03924 - 0109

SCHEDULE			
PART	LOT	CONCESSION	PIN
1			ALL OF 03924 - 0060
2	PART OF 26	1	PART OF 03124 - 0230

Piece to Purchase

Existing Property boundary

4490 Donnelly &

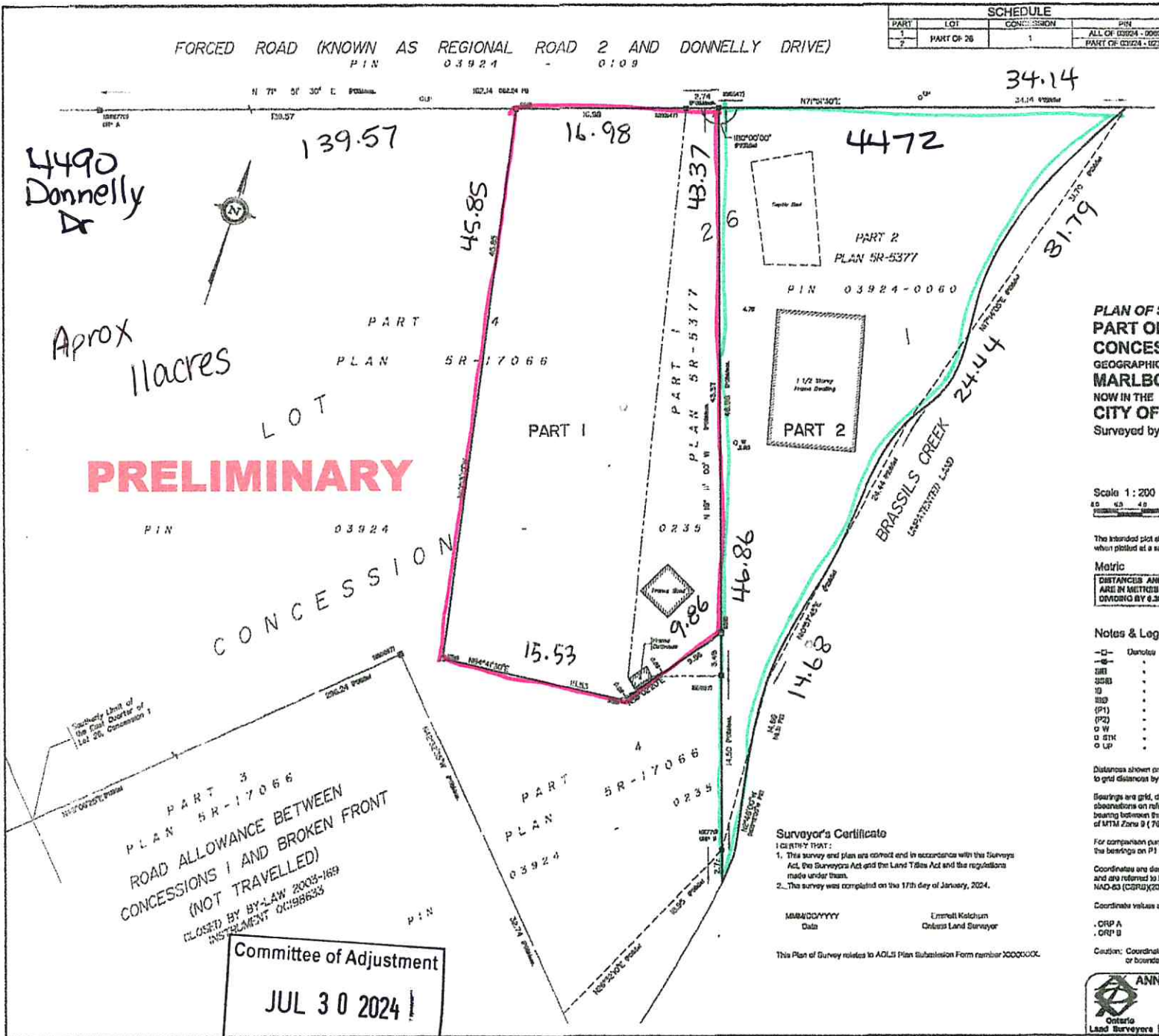
Aprox 11 acres

PRELIMINARY

CONCESSION

ROAD ALLOWANCE BETWEEN CONCESSIONS 1 AND BROKEN FRONT (NOT TRAVELLED)
 CLOSED BY BY-LAW 2003-169
 INSTRUMENT 04198633

Committee of Adjustment
 JUL 30 2024
 City of Ottawa



PLAN OF SURVEY OF
 PART OF LOT 26
 CONCESSION 1
 GEOGRAPHIC TOWNSHIP OF
 MARLBOROUGH
 NOW IN THE
 CITY OF OTTAWA
 Surveyed by Annis, O'Sullivan, Vollebakk Ltd.



The intended plot size of this plan is 610 mm in width by 457 mm in height when plotted at a scale of 1:200.

Metric
 DISTANCES AND COORDINATES SHOWN ON THIS PLAN ARE IN METRES AND CAN BE CONVERTED TO FEET BY DIVIDING BY 0.3048.

- Notes & Legend
- Survey Monument (Found)
 - Survey Monument (Not Found)
 - S— Standard Iron Bar
 - SB— Short Standard Iron Bar
 - I— Iron Bar
 - IB— Found Iron Bar
 - (P1) Plan AN-17066
 - (P2) Plan SR-5377
 - W— Well Cap
 - S— Wooden Stake
 - LP— Utility Pole

Distances shown on this plan are ground distances and can be converted to grid distances by multiplying by the combined scale factor of 0.999923.

Bearings are grid, derived from Can-Nat 2016 Real Time Network (RTN) observations on reference points (CRP A and CRP B), shown herein, having a bearing between them of N89°28'00"W and are referenced to the Central Meridian of MTM Zone 9 (78°30' West Longitude) NAD-83 (CGRS2010).

For comparison purposes, a relation of 0°00'00" exterior clockwise was applied to the bearings on P1 and P2.

Coordinates are derived from Can-Nat 2016 Real Time Network (RTN) observations and are referred to the Central Meridian of MTM Zone 9 (78°30' West Longitude) NAD-83 (CGRS2010).

Coordinate values are to urban accuracy in accordance with O. Reg. 216/10.

CRP A Northing 498200.07 Easting 309557.10
 CRP B Northing 498204.56 Easting 309730.31

Caution: Coordinates cannot, in themselves, be used to re-establish corners or boundaries shown on this plan.

Surveyor's Certificate

- I CERTIFY THAT:
- This survey and plan are correct and in accordance with the Surveyors Act, the Surveyors Act and the Land Titles Act and the regulations made under them.
 - This survey was completed on the 17th day of January, 2024.

MMB/0000000000 Emmett Kalchauer
 Date Ontario Land Surveyor

This Plan of Survey relates to AOLS Plan Submission Form number X0000000.

ANNIS, O'SULLIVAN, VOLLEBEKK LTD.
 110 Provincial Street, Box 1340
 Kemptville, Ontario K0G 1L9
 Phone: (613) 265-1717
 Email: annis@annisovl.com



AREA CERTIFICATE

Re: Donnelly Drive Reference Plan
Part of Lot 26
Concession 1
Geographic Township of Mariboroug
Now in the City of Ottawa

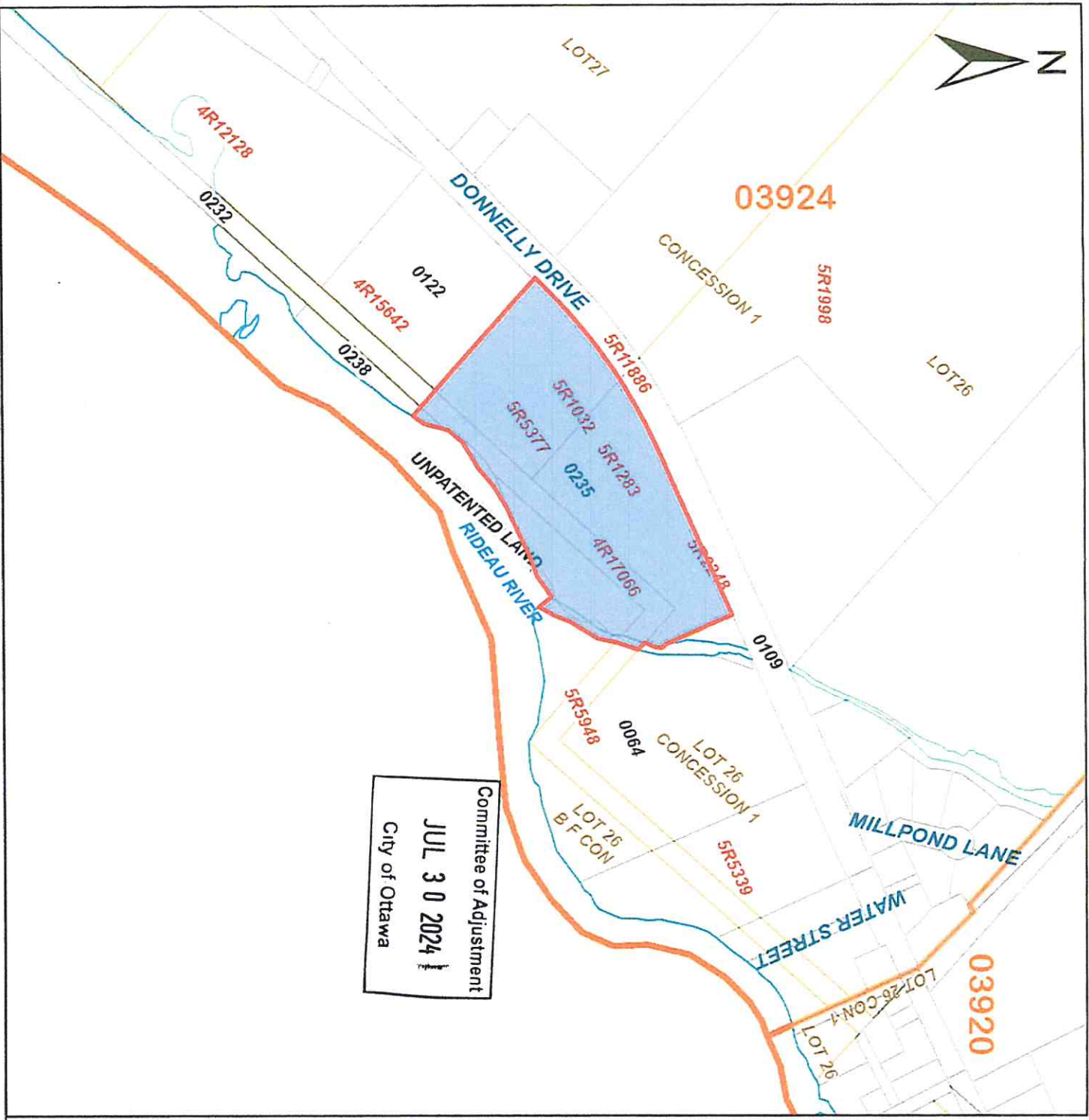
I hereby certify the area of Part 1 on the above noted plan to be 947 square metres.

Committee of Adjustment
JUL 30 2024
City of Ottawa

Kemptville, Ontario	Emmett
Ketchum	
February 27, 2024	Ontario Land
Surveyor	
Ref: K-13583-24	

ANNIS O'SULLIVAN _____
VOLLEBEKK

ONTARIO LAND
SURVEYORS
T.J. Allison
J.E. Anderson
S.S. Bazar
A.J. Broxham
G.T. Hartwick
E.H. Henveyer
E.K. Ketchum
V.A. Sheip
D.R. Vollebakk



ServiceOntario

PRINTED ON 31 MAY, 2024 AT 10:07:38
FOR ACCOOLN01

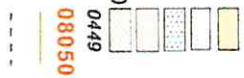


SCALE

PROPERTY INDEX MAP OTTAWA-CARLETON (No. 04)

LEGEND

- FREEHOLD PROPERTY
- LEASEHOLD PROPERTY
- LIMITED INTEREST PROPERTY
- CONDOMINIUM PROPERTY
- RETIRED PIN (MAP UPDATE PENDING)
- PROPERTY NUMBER
- BLOCK NUMBER
- GEOGRAPHIC FABRIC
- EASEMENT



NOTES

REVIEW THE TITLE RECORDS FOR COMPLETE PROPERTY INFORMATION AS THIS MAP MAY NOT REFLECT RECENT REGISTRATIONS

THIS MAP WAS COMPILED FROM PLANS AND DOCUMENTS RECORDED IN THE LAND REGISTRATION SYSTEM AND HAS BEEN PREPARED FOR PROPERTY INDEXING PURPOSES ONLY

FOR DIMENSIONS OF PROPERTIES BOUNDARIES SEE RECORDED PLANS AND DOCUMENTS

ONLY MAJOR EASEMENTS ARE SHOWN

REFERENCE PLANS UNDERLYING MORE RECENT REFERENCE PLANS ARE NOT ILLUSTRATED

THIS IS NOT A PLAN OF SURVEY

