

Notes & Legend

- | | | |
|---------|---------|---|
| —○— | Denials | Survey Monument Planted |
| —●— | | Survey Monument Found |
| —□— | | Standard Iron Bar |
| —SSB— | | Short Standard Iron Bar |
| —I— | | Iron Bar |
| —CP— | | Concrete Pin |
| —RFB— | | Round Iron Bar |
| —M— | | Measured |
| —(WIT)— | | Witness |
| —(AOS)— | | Annis, O'Sullivan, Vollebek Ltd. |
| —(P)— | | Registered Plan 522 |
| —(P2)— | | Plan 4R-26381 |
| —(P3)— | | (1992) Plan, July 27, 2012 |
| —(P4)— | | (1992) Plan, May 6, 2010 |
| —FH— | | Fire Hydrant |
| —WV— | | Water Valve |
| —MHST— | | Maintenance Hole (Storm Sewer) |
| —MH2— | | Maintenance Hole (Sanitary) |
| —MH3— | | Maintenance Hole (Bell Telephone) |
| —VC— | | Valve Chamber (Watermain) |
| —ST— | | Underground Storm Sewer |
| —S— | | Underground Sanitary Sewer |
| —W— | | Underground Water |
| —OV— | | Overhead Wire |
| —UG— | | Underground Gas |
| —UB— | | Underground (Bell) |
| —CB— | | Catch Basin |
| —TB— | | Bell Terminal Box |
| —GM— | | Gas Meter |
| —HM— | | Hydro Meter |
| —MP— | | Metal Pole |
| —UP— | | Utility Pole |
| —FP— | | Aluminum Fence Post |
| —PWF— | | Post and Wire Fence |
| —CLF— | | Chain Link Fence |
| —BF— | | Board Fence |
| —D— | | Diameter |
| —LE— | | Location of Elevations |
| —CC— | | Top of Concrete Curb / Retaining Wall Elevation |
| —CAL— | | Centreline |
| —PL— | | Property Line |
| —T/G— | | Top of Grate |
| —CRW— | | Concrete Retaining Wall |
| —SRW— | | Stone Retaining Wall |
| —SRW— | | Stone Retaining Wall |
| —D— | | Deciduous Tree |
| —C— | | Coniferous Tree |
| —S— | | Sign |

ELEVATION NOTES
 1. Elevations shown are geodetic and are referred to the CGVD28 geodetic datum, derived from Site Benchmark as shown on Plan by (1992) dated January 15, 2001.
 2. It is the responsibility of the user of this information to verify that the job benchmark has not been altered or disturbed and that its relative elevation and description agrees with the information shown on this drawing.

UTILITY NOTES
 1. This drawing cannot be accepted as acknowledging all of the utilities and it will be the responsibility of the user to contact the respective utility authorities for confirmation.
 2. Only visible surface utilities were located.
 3. A field location of underground plant by the pertinent utility authority is mandatory before any work involving breaking ground, probing, excavating etc.
 4. Underground services are taken from City of Ottawa sheets L-04-29 Custom and Plan R-594-14 Sheet 8 of 18.

Topographic data was collected under Winter Conditions. Snow cover and ice preclude determining location and elevation of some topographical data that is otherwise visible.

Committee of Adjustment
MAY 08 2024
 City of Ottawa

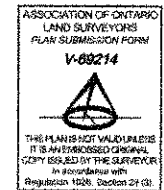
TOPOGRAPHIC PLAN OF SURVEY OF PART OF LOT 67 REGISTERED PLAN 522 CITY OF OTTAWA
 Surveyed by Annis, O'Sullivan, Vollebek Ltd.

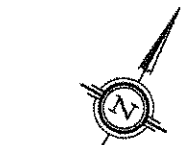
Scale 1 : 150
 Metric
 DISTANCES SHOWN ON THIS PLAN ARE IN METRES AND CAN BE CONVERTED TO FEET BY DIVIDING BY 0.3048

Surveyor's Certificate
 I CERTIFY THAT:
 1. This survey and plan are correct and in accordance with the Surveys Act and the Regulations made under them.
 2. The survey was completed on the 23rd day of January, 2024.

MARCH 4, 2024
 Date
 Mirei Arédeau
 Ontario Land Surveyor

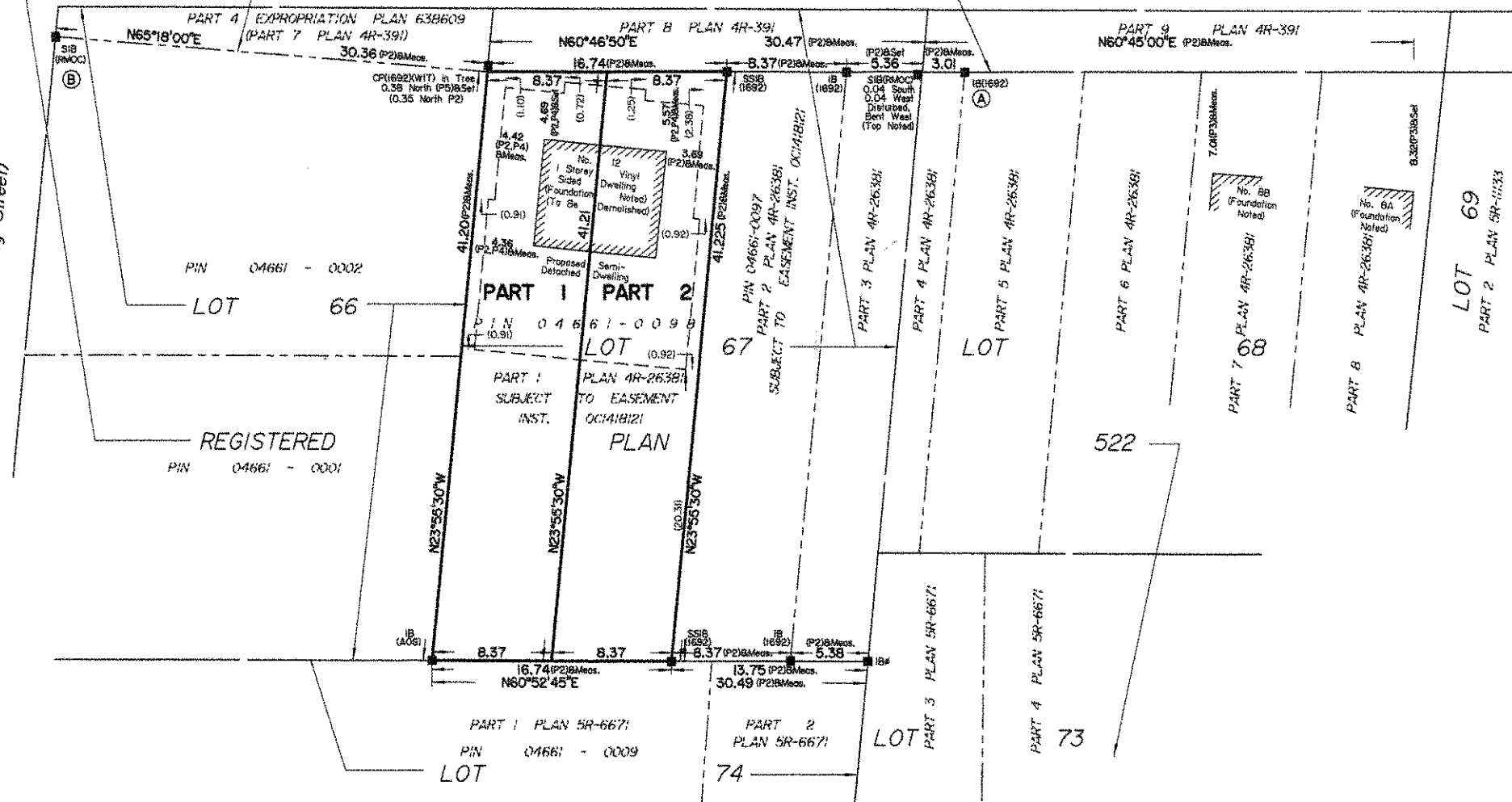
Bearings are grid, derived from Can-Nat 2015 Real Time Network GPS observations, MTN Zone 9 (178°30' West Longitude) NAD-83 (original).





ASHWOOD CRESCENT
(Formerly Craig Street)

MEADOWLANDS DRIVE WEST
Regional Road No. 51
PIN 04677 - 0178



Committee of Adjustment
MAY 08 2024
City of Ottawa

Notes & Legend

- Denotes Survey Monument Planted
- Denotes Survey Monument Found
- SIB " Standard Iron Bar
- SSIB " Short Standard Iron Bar
- IB " Iron Bar
- CP " Concrete Pin
- IB# " Round Iron Bar
- Mecs. " Measured
- (WIT) " Witness
- (AOG) " Annis, O'Sullivan, Vollebakk Ltd.
- (P1) " Registered Plan 522
- (P2) " Plan 4R-26381
- (P3) " (1692) Plan July 27, 2012
- (P4) " (1692) Plan, May 6, 2010

Distances shown on this plan are ground distances and can be converted to grid distances by multiplying by the combined scale factor of 0.9999xx.

Bearings are grid, derived from Can-Net 2016 Real Time Network GPS observations on reference points A and B, shown hereon, having a bearing of Nxx°xx'xx"W and are referenced to Specified Control Points 01919680005 and 01919750705, MTM Zone 9 (76°30' West Longitude) NAD-83 (original).

For bearing comparisons, a rotation of 0°00'00" counter-clockwise was applied to bearings on plan

Coordinates are derived from Can-Net 2016 Real Time Network GPS observations referenced to Specified Control Points 01919680005 and 01919750705, MTM Zone 9 (76°30' West Longitude) NAD-83 (original).

Coordinate values are to urban accuracy in accordance with O. Reg. 216/10.

. 01919680005	Northing	5027191.26	Easting	361496.76
. 01919750705	Northing	5016816.93	Easting	360806.84
. Point A	Northing		Easting	
. Point B	Northing		Easting	

Caution: Coordinates cannot, in themselves, be used to re-establish corners or boundaries shown on this plan.

SCHEDULE				
AREA (Sq.m.)	PART	LOT	PLAN	PIN
343.5	1	PART OF 67	522	ALL OF 04661-0098
343.5	2			

Parts 1 and 2: Subject to easement, Inst. OC1418121.

**PLAN OF SURVEY OF
PART OF LOT 67
REGISTERED PLAN 522
CITY OF OTTAWA**

Surveyed by Annis, O'Sullivan, Vollebakk Ltd.

Scale 1 : 300



The intended plot size of the plan is 610 mm in width by 356 mm in height when plotted at a scale of 1:300.

Metric

DISTANCES AND COORDINATES SHOWN ON THIS PLAN ARE IN METRES AND CAN BE CONVERTED TO FEET BY DIVIDING BY 0.3048.

Surveyor's Certificate

I CERTIFY THAT:

- This survey and plan are correct and in accordance with the Surveys Act, the Surveyors Act and the Land Titles Act and the regulations made under them.
- The survey was completed on the ___ day of _____, 2024.

Date

T. Hartwick
Ontario Land Surveyor

This plan of survey relates to AOLS Plan Submission Form Number V-

ANNIS, O'SULLIVAN, VOLLEBEKK LTD.
14 Concourse Gate, Suite 500
Nepean, Ont. K2E 7S6
Phone: (613) 727-0850 / Fax: (613) 727-1079
Email: Nepean@avdltd.com

Ontario Land Surveyors Job No. 24528-24 Rev3 P.L.T. 67 PL 522 R.D1