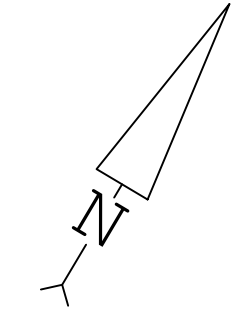


LOT 23 CONCESSION 1
(OTTAWA FRONT)
PART 1 PLAN SR-14597

LOT 7 REGISTERED PLAN 4R-33934
PART 3 PLAN 4R-33934
P.I.N. 04269 - 1941

22 HOCHELAGA STREET
(FORMERLY GEORGE STREET)



Committee of Adjustment
Received | Reçu le
2024-09-13
City of Ottawa | Ville d'Ottawa
Comité de dérogation

I REQUIRE THIS PLAN TO BE DEPOSITED UNDER THE LAND TITLES ACT.
DATE: _____
DANIEL ROBINSON
ONTARIO LAND SURVEYOR

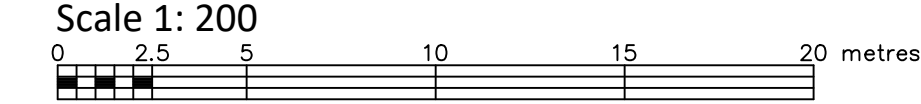
PLAN 4R-
RECEIVED AND DEPOSITED
DATE: _____
REPRESENTATIVE FOR LAND REGISTRAR
FOR THE LAND TITLES DIVISION OF
OTTAWA-CARLETON NO. 4.

SCHEDULE			
PART	LOT/PLAN	PIN	AREA (Sq.m.)
1	PART OF THE COMMON ELEMENTS OF OTTAWA-CARLETON CONDOMINIUM PLAN No. 614	PART OF 15614-0001 to 0027 (inclusive)	493.2

PART 1 IS SUBJECT TO EASEMENTS PER INST No. LT1194715 & LT1196684

PLAN OF SURVEY OF
PART OF THE COMMON ELEMENTS OF OTTAWA-CARLETON CONDOMINIUM PLAN No. 614
CITY OF OTTAWA

FARLEY, SMITH & DENIS SURVEYING LTD. 2024



Metric Note
Distances and/or coordinates on this plan are in metres and can be converted to feet by dividing by 0.3048.

Distance Note
Distances shown on this plan are ground distances and can be converted to grid distances by multiplying by the combined scale factor of 0.99995.

Bearing Note
Bearings hereon are grid bearings derived from the Can-Net Real Time Network and are referred to the Central Meridian of MTM Zone 9 (76°30' West Longitude) Nad-83 (Original).

For bearing comparisons, a rotation of 0°53'40" counter-clockwise was applied to bearings on P1, P2 & P3.

CO-ORDINATES WERE DERIVED FROM CAN-NET REAL TIME NETWORK OBSERVATIONS, MTM ZONE 9, N.A.D. 1983 (ORIGINAL).		
POINT ID	NORTHING	EASTING
(A)	5034233.04	373058.91
(B)	5034310.43	373026.58
01919680105	5024915.16	373971.65
019198434761	5036178.12	372436.11

CO-ORDINATES ARE MTM ZONE 9, N.A.D. 1983 (ORIGINAL), TO URBAN ACCURACY PER SEC. 14 (2) OF O.REG. 216/10, AND CANNOT, IN THEMSELVES, BE USED TO RE-ESTABLISH CORNERS OR BOUNDARIES SHOWN ON THIS PLAN.

Surveyor's Certificate

I certify that:

- This survey and plan are correct and in accordance with the Surveys Act, the Surveyors Act and the Land Titles Act and the Regulations made under them.
- The survey was completed on the ___ day of _____, 2024.

Date: _____ Daniel Robinson
Ontario Land Surveyor

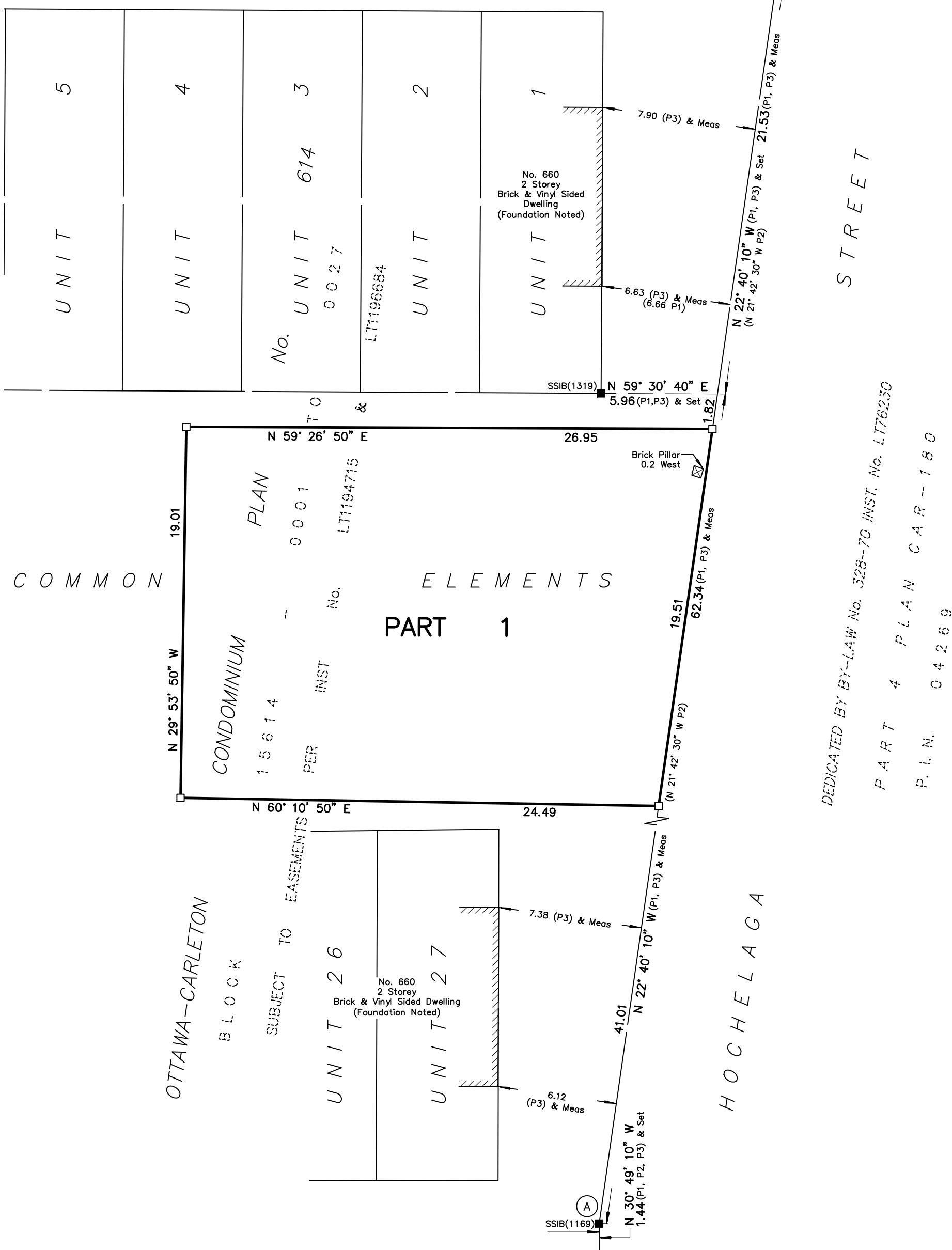
This plan of survey relates to AOLS Plan Submission Form Number V-XXXXX

- Notes & Legend**
- Denotes Survey Monument Planted
 - " Survey Monument Found
 - SIB " Standard Iron Bar
 - SSIB " Short Standard Iron Bar
 - IB " Iron Bar
 - (Wit) " Witness
 - Meas " Measured
 - (P1) " Ottawa-Carleton Condominium Plan No. 614
 - (P2) " Plan CAR - 180
 - (P3) " Plan by (1692) dated April 6, 2023 (File No. 64-23)

FARLEY, SMITH & DENIS SURVEYING LTD.

ONTARIO LAND SURVEYORS
CANADA LAND SURVEYORS

Unit 275, 30 COLONNADE ROAD, OTTAWA, ONTARIO K2E 7J6
TEL. (613) 727-8226 E-mail: fdsurveys@bellnet.ca



Reserve 0.3m Wide
DEDICATED AS PART OF
HOCHELAGA STREET BY BY-LAW
No. 327-70, INST No. CT79264
P.I.N. 04269-0268

LOT 38 REGISTERED PLAN M-100
PART 5 PLAN CAR-6
P.I.N. 04269 - 0313

HOCHELAGA STREET
(REGISTERED PLAN M-100)
P.I.N. 04269 - 0268
SUBJECT TO EASEMENT PER
INST No. LT60693

REGISTERED
LOT
S
AUG
27th,
2024

CARLETON CONDOMINIUM
PLAN No. 240
BLOCK 15240 - 0001 TO 0006

LOT 23 CONCESSION
P.I.N. 04269 - 0752
PART 27
PLAN 4R-11969

P.I.N. 04269 - 0824
PART 20
PLAN 4R-11969

LOT 23 CONCESSION
PART 1
P.I.N. 04269 - 0682
PLAN 5R-14597

REGISTERED
LOT
PART 3
P.I.N. 04269 - 1941
PLAN 4R-33934

FORMERLY CONCESSION
P.I.N. 04269 - 0268



Reserve 0.3m Wide
DEDICATED AS PART OF
HOCHELAGA STREET No. CT9264
P.I.N. 04269 - 0268

HOCHELAGA STREET
(REGISTERED PLAN M-100)
P.I.N. 04269 - 0268
SUBJECT TO EASEMENT PER
INST. No. LT60693

DEDICATED BY BY-LAW No. 328-70 INST. No. LT76230
PART 4
CAR-180
P.I.N. 04269 - 0268

PART 1 PLAN CAR-6
P.I.N. 04269 - 0143
PART 2 PLAN CAR-6
P.I.N. 04269 - 0142
PART 5 PLAN CAR-150
S/T EASEMENT INST LT72925
PART 6 PLAN CAR-150
P.I.N. 04269 - 0141
PART 7 PLAN CAR-150
P.I.N. 04269 - 0318
PART 8 PLAN CAR-150
P.I.N. 04269 - 0319
PART 9 PLAN CAR-150
P.I.N. 04269 - 0317
PART 2 PLAN CAR-6
S/T EASEMENT INST LT73105
PART 1 PLAN CAR-6
P.I.N. 04269 - 0316
PART 3 PLAN CAR-6
P.I.N. 04269 - 0314
PART 4 PLAN CAR-6
P.I.N. 04269 - 0315
PART 5 PLAN CAR-6
P.I.N. 04269 - 0313

REGISTERED
LOT
S
AUG
27th,
2024