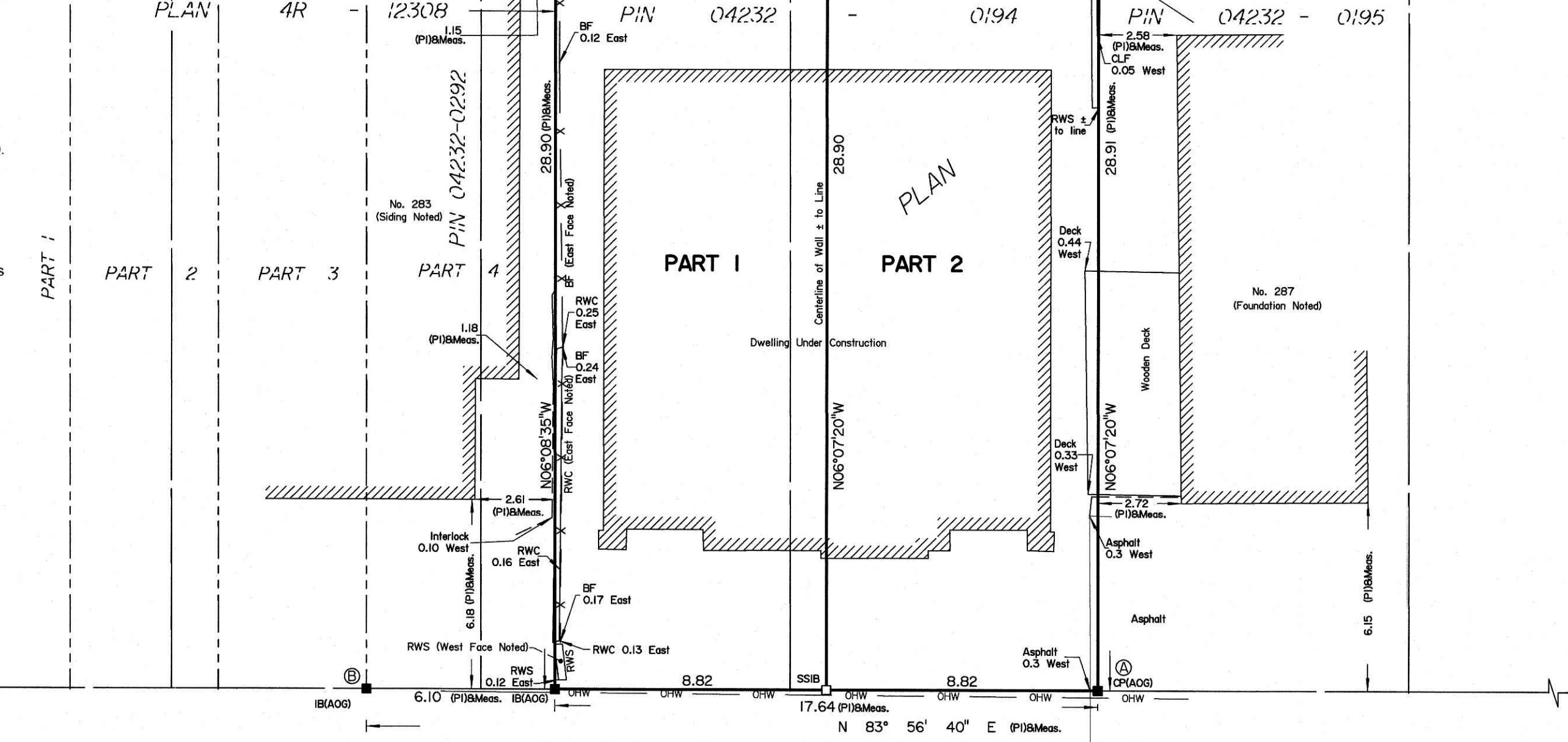


LOT 319 LOT 318 LOT 317 LOT 316 LOT 315 LOT 314

PIN 04232-0247 PIN 04232-0246 PIN 04232-0245

246

LOT 249 LOT 250 LOT 251 LOT 252 LOT 253 LOT 254



REGISTERED

MONTFORT STREET (Formerly Overton Street)

PIN 04232 - 0264

Distances shown on this plan are ground distances and can be converted to grid distances by multiplying by the combined scale factor of 0.999953.

Bearings are grid, derived from Can-Net 2016 Real Time Network GPS observations on reference points A and B, shown hereon, having a bearing of N83°56'40\"E and are referenced to Specified Control Points 01919680105 and 019198434761, MTM Zone 9 (76°30' West Longitude) NAD-83 (original).

For bearing comparisons, a rotation of 0°20'50\" counter-clockwise was applied to bearings on plan P1.

Coordinates are derived from Can-Net 2016 Real Time Network GPS observations referenced to Specified Control Points 01919680105 and 01918434761, MTM Zone 9 (76°30' West Longitude) NAD-83 (original).

Coordinate values are to urban accuracy in accordance with O. Reg. 216/10.

.01919680105	Northing	5024915.16	Easting	373971.65
.019198434761	Northing	5036178.12	Easting	372436.11
.Point A	Northing	5033572.20	Easting	370487.89
.Point B	Northing	5033569.69	Easting	370464.27

Caution: Coordinates cannot, in themselves, be used to re-establish corners or boundaries shown on this plan.

Notes & Legend

- Denotes Survey Monument Planted
- " Survey Monument Found
- SSIB " Short Standard Iron Bar
- IB " Iron Bar
- CP " Concrete Pin
- (WIT) " Witness
- (OU) " Origin Unknown
- Meas. " Measured
- (AOG) " Annis, O'Sullivan, Vollebakk Ltd.
- (PI) " (AOG) Plan dated June 23, 2021
- OHW — " Overhead Wires
- o UP " Utility Pole
- CLF " Chain Link Fence
- BF " Board Fence
- RWS " Stone Retaining Wall
- RWC " Concrete Retaining Wall
- RWT " Timber Retaining Wall

I REQUIRE THIS PLAN TO BE DEPOSITED UNDER THE LAND TITLES ACT.
DATE: _____

PLAN 4R-
RECEIVED AND DEPOSITED
DATE: _____

T. HARTWICK
ONTARIO LAND SURVEYOR

REPRESENTATIVE FOR
LAND REGISTRAR FOR THE
LAND TITLES DIVISION OF
OTTAWA-CARLETON NO. 4.

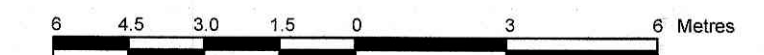
SCHEDULE				
AREA (Sq.m.)	PART	LOT	REGISTERED PLAN	PIN
255.0	1	PART OF 251 AND PART OF 252	246	ALL OF 04232-0194
255.0	2	PART OF 252		

PLAN OF SURVEY OF

LOT 252 AND PART OF LOT 251 REGISTERED PLAN 246 CITY OF OTTAWA

Surveyed by Annis, O'Sullivan, Vollebakk Ltd.

Scale 1 : 150



Metric

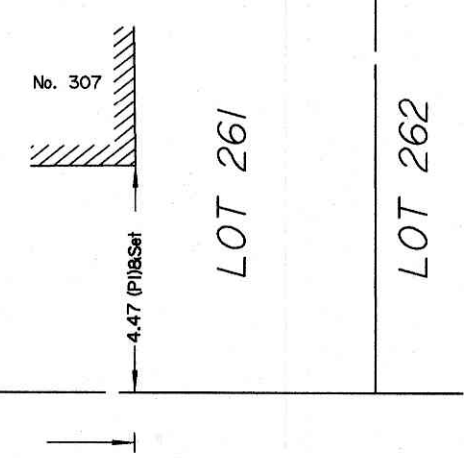
DISTANCES AND COORDINATES SHOWN ON THIS PLAN ARE IN METRES AND CAN BE CONVERTED TO FEET BY DIVIDING BY 0.3048.

Surveyor's Certificate

- I CERTIFY THAT:
- This survey and plan are correct and in accordance with the Surveys Act, the Surveyors Act and the Land Titles Act and the regulations made under them.
 - The survey was completed on the 23rd day of March, 2022.

Date

T. Hartwick
Ontario Land Surveyor



ANNIS, O'SULLIVAN, VOLLEBEKK LTD.
14 Concourse Gate, Suite 500
Nepean, Ont. K2E 7S6
Phone: (613) 727-0850 / Fax: (613) 727-1079
Email: Nepean@aosvld.com

Ontario Land Surveyors Job No. 22599-22 Twenty Inc. PrtL1251.L1252.RP246 R.DI ND