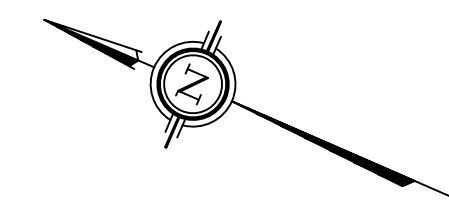


SCHEDULE				
AREA (Sq.m)	PART	LOT	PLAN	PIN
162.5	1	PART OF 250		
14.1	2	PART OF 250		
210.0	3	PART OF 250 & 251	207509	ALL OF 04038-0267
10.5	4	PART OF 250 & 251		
28.1	5	PART OF 251		
4.1	6	PART OF 251		

Parts 2, 4: Subject to easement Inst.'s N578875 & N715551.

Committee of Adjustment
Received | Reçu le
Revised | Modifié le : 2024-07-11
City of Ottawa | Ville d'Ottawa
Comité de dérogation



PLAN OF SURVEY OF
PART OF LOTS 250 & 251
REGISTERED PLAN 207509
CITY OF OTTAWA
Surveyed by Annis, O'Sullivan, Vollebek Ltd.

Scale 1:100
0 1 2 3 4 Metres

The intended plot size of the plan is 914 mm in width by 762 mm in height when plotted at a scale of 1:100.

Metric
DISTANCES AND COORDINATES SHOWN ON THIS PLAN
ARE IN METRES AND CAN BE CONVERTED TO FEET BY
DIVIDING BY 0.3048.

Surveyor's Certificate

- I CERTIFY THAT:
- This survey and plan are correct and in accordance with the Surveys Act, the Surveyors Act and the Land Titles Act and the regulations made under them.
 - The survey was completed on the ___ day of _____, 2024.

Date _____
E. H. Herweyer
Ontario Land Surveyor

This plan of survey relates to AOLS Plan Submission Form Number V-_____.

Notes & Legend

- Denotes Survey Monument Planted
- Survey Monument Found
- SIB - Standard Iron Bar
- SSIB - Short Standard Iron Bar
- IB - Iron Bar
- IP - Iron Pipe
- (WIT) - Witness
- (AOG) - Annis, O'Sullivan, Vollebek Ltd.
- Meas. - Measured
- (P1) - Registered Plan 207509
- (P2) - Plan 4R-2251
- (P3) - (1287) Plan December 21, 1994
- (P4) - (1319) Plan November 12, 1993
- WTL - Centreline Wall to Line
- CL - Centreline
- OHW - Overhead Wires
- HM - Hydro Meter
- GM - Gas Meter
- SRW - Stone Retaining Wall
- BF - Board Fence

Distances shown on this plan are ground distances and can be converted to grid distances by multiplying by the combined scale factor of 0.999939.

Bearings are grid, derived from Can-Net 2016 Real Time Network GPS observations on reference points A and B, shown hereon, and are referenced to Specified Control Points 01919680005 and 01919680105, MTM Zone 9 (76°30' West Longitude) NAD-83 (original).

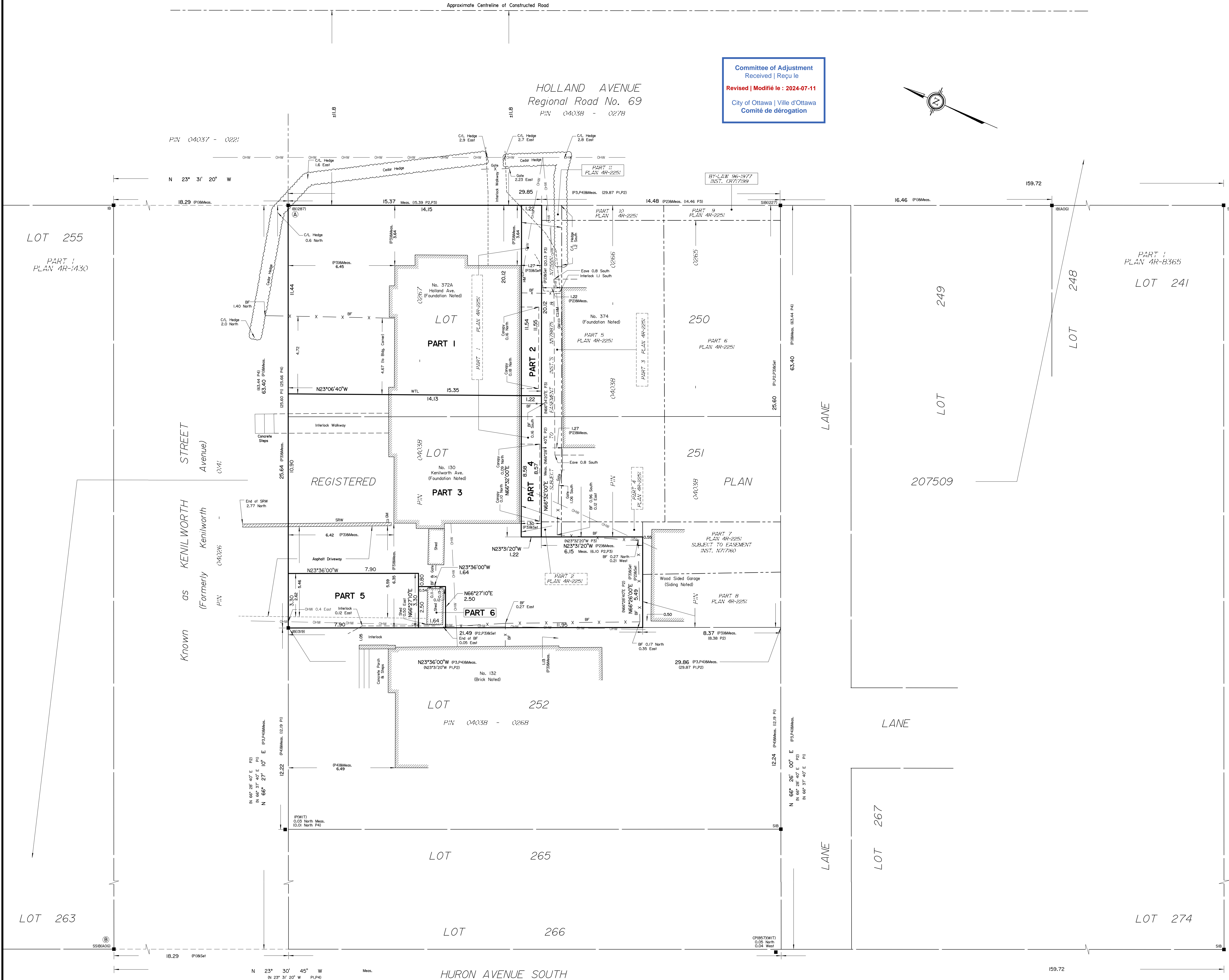
For bearing comparisons, a rotation of 0°32'40" counter-clockwise was applied to bearings on plans P1, P2, P3, P4.

Coordinates are derived from Can-Net 2016 Real Time Network GPS observations referenced to Specified Control Points 01919680005 and 01919680105, MTM Zone 9 (76°30' West Longitude) NAD-83 (original).

Coordinate values are to urban accuracy in accordance with O. Reg. 216/10.

- .01919680005 Northing 5027191.26 Easting 361496.76
- .01919680105 Northing 5024915.16 Easting 373971.65
- .Point A Northing 5029494.00 Easting 365209.86
- .Point B Northing 5028475.43 Easting 365143.44

Caution: Coordinates cannot, in themselves, be used to re-establish corners or boundaries shown on this plan.

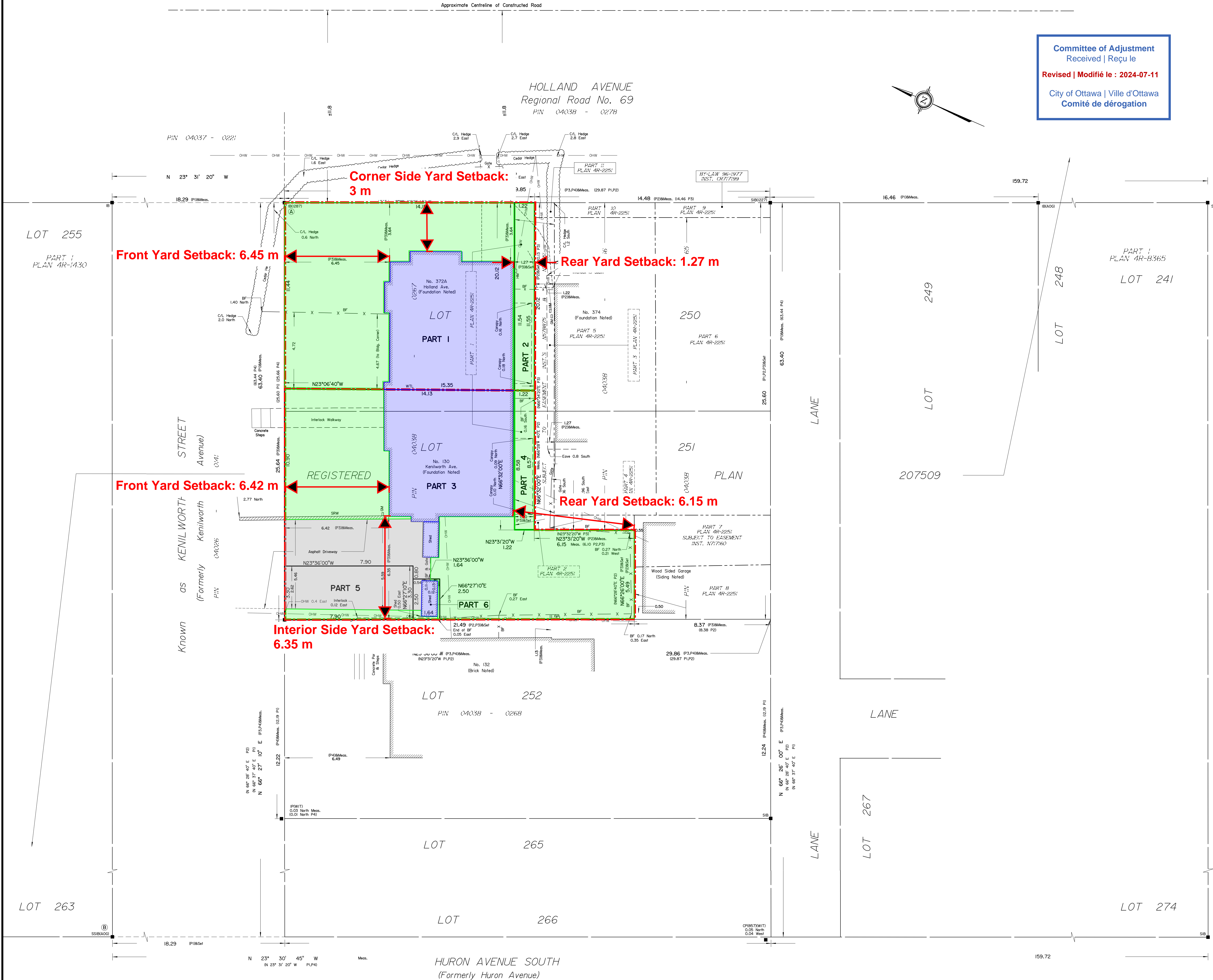


RUSKIN STREET

SCHEDULE				
AREA (Sq.m)	PART	LOT	PLAN	PIN
162.5	1	PART OF 250		
14.1	2	PART OF 250		
210.0	3	PART OF 250 & 251	207509	ALL OF 04038-0267
10.5	4	PART OF 250 & 251		
28.1	5	PART OF 251		
4.1	6	PART OF 251		

Parts 2, 4: Subject to easement Inst.'s N578875 & N715551.

Committee of Adjustment
Received | Reçu le
Revised | Modifié le : 2024-07-11
City of Ottawa | Ville d'Ottawa
Comité de dérogation



PLAN OF SURVEY OF
PART OF LOTS 250 & 251
REGISTERED PLAN 207509
CITY OF OTTAWA
Surveyed by Annis, O'Sullivan, Vollebek Ltd.

Scale 1:100
0 1 2 3 4 Metres

The intended plot size of the plan is 914 mm in width by 762 mm in height when plotted at a scale of 1:100.

Metric
DISTANCES AND COORDINATES SHOWN ON THIS PLAN ARE IN METRES AND CAN BE CONVERTED TO FEET BY DIVIDING BY 0.3048.

Surveyor's Certificate
I CERTIFY THAT:
1. This survey and plan are correct and in accordance with the Surveys Act, the Surveyors Act and the Land Titles Act and the regulations made under them.
2. The survey was completed on the ___ day of _____, 2024.

Date _____
E. H. Herweyer
Ontario Land Surveyor

This plan of survey relates to AOLS Plan Submission Form Number V-_____.

- Notes & Legend
- Denotes Survey Monument Planted
 - Survey Monument Found
 - SIB - Standard Iron Bar
 - SSIB - Short Standard Iron Bar
 - IB - Iron Bar
 - IP - Iron Pipe
 - (WIT) - Witness
 - (AOG) - Annis, O'Sullivan, Vollebek Ltd.
 - Meas. - Measured
 - (P1) - Registered Plan 207509
 - (P2) - Plan 4R-2251
 - (P3) - (1287) Plan December 21, 1994
 - (P4) - (1319) Plan November 12, 1993
 - WTL - Centreline Wall to Line
 - CL - Centreline
 - OHW - Overhead Wires
 - HM - Hydro Meter
 - GM - Gas Meter
 - SRW - Stone Retaining Wall
 - BF - Board Fence

Distances shown on this plan are ground distances and can be converted to grid distances by multiplying by the combined scale factor of 0.999939.

Bearings are grid, derived from Can-Net 2016 Real Time Network GPS observations on reference points A and B, shown hereon, and are referenced to Specified Control Points 01919880005 and 01919880105, MTM Zone 9 (76°30' West Longitude) NAD-83 (original).

For bearing comparisons, a rotation of 0°32'40" counter-clockwise was applied to bearings on plans P1, P2, P3, P4.

Coordinates are derived from Can-Net 2016 Real Time Network GPS observations referenced to Specified Control Points 01919880005 and 01919880105, MTM Zone 9 (76°30' West Longitude) NAD-83 (original).

Coordinate values are to urban accuracy in accordance with O. Reg. 216/10.

- .01919880005 Northing 5027191.26 Easting 361496.76
- .01919880105 Northing 5024915.16 Easting 373971.65
- .Point A Northing 5029494.00 Easting 365209.86
- .Point B Northing 5028475.43 Easting 365143.44

Caution: Coordinates shown, in themselves, be used to re-establish corners or boundaries shown on this plan.



NORTH ELEVATION

Committee of Adjustment
Received | Reçu le
2024-07-12
City of Ottawa | Ville d'Ottawa
Comité de dérogation



EAST ELEVATION



WEST ELEVATION



SOUTH ELEVATION 1



SOUTH ELEVATION 2



EAST ELEVATION