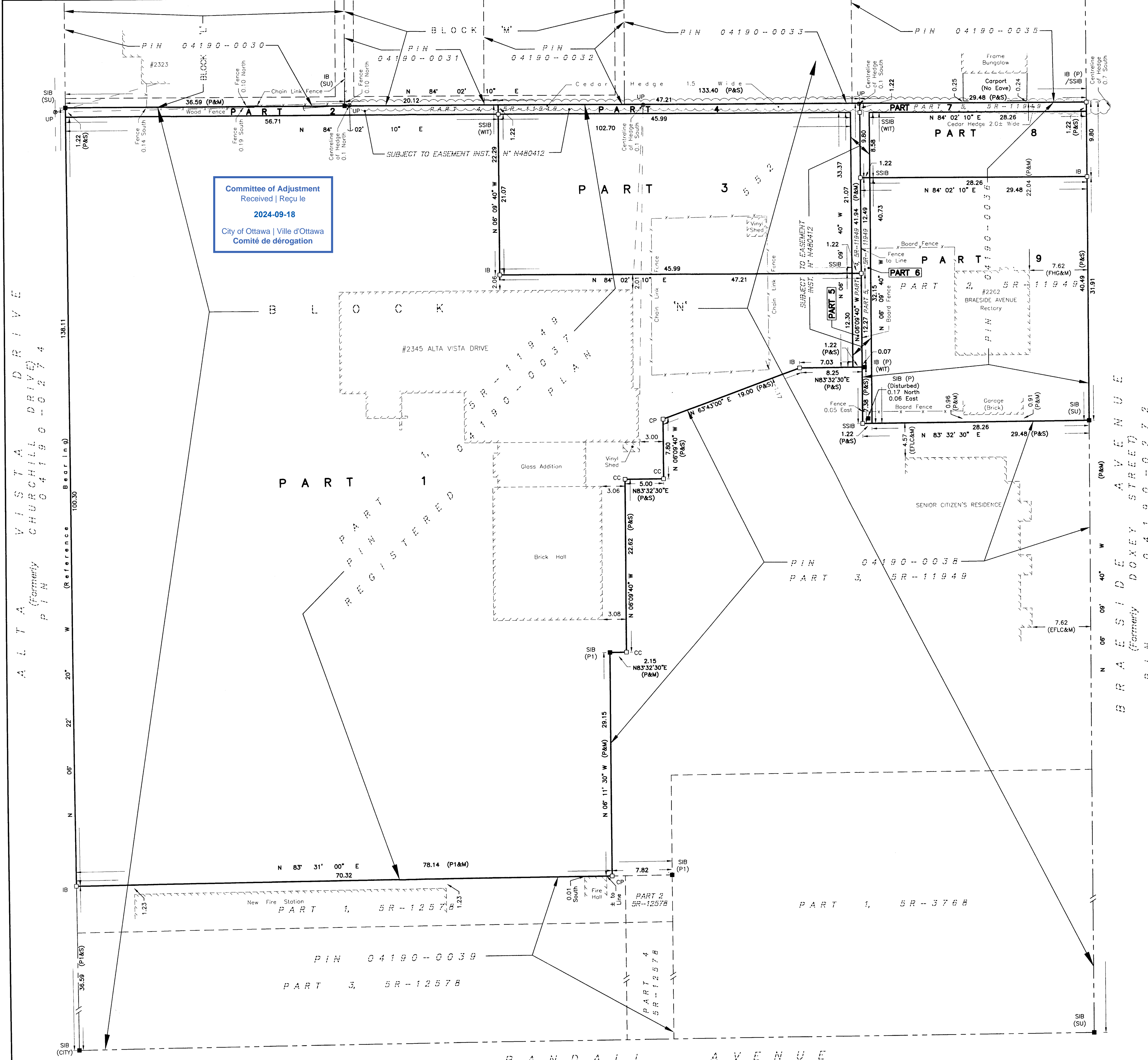


METRIC DISTANCES SHOWN ON THIS PLAN ARE IN METRES AND CAN BE CONVERTED TO FEET BY DIVIDING BY 0.3048



Committee of Adjustment  
Received | Reçu le  
2024-09-18  
City of Ottawa | Ville d'Ottawa  
Comité de dérogation

I REQUIRE THIS PLAN TO BE DEPOSITED UNDER THE LAND TITLES ACT.  
DATE July 9/2008  
DATE July 9/08  
LAND REGISTRAR FOR THE LAND TITLES DIVISION OF OTTAWA - CARLETON (N° 4)

SCHEDULE			
PART	BLOCK	REG'D PLAN	PIN
1	PART OF 'N'	N° 552	ALL OF 04190-0037
2			
3			
4			ALL OF 04190-0036
5			
6			
7			
8			
9			

PARTS 2,4,5,6 & 7 - SUBJECT TO EASEMENT INST. N° N480412.



PLAN OF  
PART OF BLOCK 'N'  
REGISTERED PLAN N° 552  
CITY OF OTTAWA

SCALE 1 : 250  
FAIRHALL, MOFFATT & WOODLAND LIMITED  
ONTARIO LAND SURVEYORS

NOTES  
BEARINGS ARE ASTRONOMIC AND ARE REFERRED TO THE EASTERLY LIMIT OF ALTA VISTA DRIVE AS SHOWN ON PLAN 5R-11949, HAVING A BEARING OF N 06° 22' 00" W.

- LEGEND
- - SURVEY MONUMENT SET
  - - SURVEY MONUMENT FOUND
  - SIB - STANDARD IRON BAR
  - SSIB - SHORT STANDARD IRON BAR
  - IB - IRON BAR
  - CC - CUT CROSS
  - CP - CONCRETE PIN
  - (P) - PLAN 5R-11949
  - (P1) - PLAN 5R-12578
  - (S) - SET
  - (M) - MEASURED
  - (CITY) - CITY OF OTTAWA
  - (EFLC) - E. F. LYNN COLE SURVEYING LTD., O.L.S. (REF. 0-552-1(A))
  - (FHG) - F. H. GOOCH, O.L.S. (REF. C-552-3)
  - (SU) - SOURCE UNKNOWN
  - (WT) - WITNESS
  - PIN - PROPERTY IDENTIFIER NUMBER
  - ⊙ UP - UTILITY POLE
  - ← - ANCHOR & GUY WIRE
  - - - OVERHEAD UTILITY WIRES

SURVEYOR'S CERTIFICATE  
I CERTIFY THAT:  
1. THIS SURVEY AND PLAN ARE CORRECT AND IN ACCORDANCE WITH THE SURVEYS ACT, THE SURVEYORS ACT, THE LAND TITLES ACT AND THE REGULATIONS MADE UNDER THEM.  
2. THE SURVEY WAS COMPLETED ON JULY 04, 2008.  
DATE July 9/2008  
JOHN H. GUTRI  
ONTARIO LAND SURVEYOR

Fairhall  
Moffatt &  
Woodland  
LIMITED  
Ontario Land Surveyors  
Ottawa

Surveying and Land Information Services  
235 TERENCE MATTHEWS CRESCENT, KANATA, ONTARIO K2M 2B3  
TEL: (613) 591-2590 FAX: (613) 591-1495  
www.fmo.on.ca

JOB No. L17000  
FILE  
REFERENCE No. 2 - 552 GR  
S:\085\17000\DWGS 2008-07-09 RP170L-REV1.DWG (n)