

October 18, 2024

Tree Information Report – 250 Shakespeare Street

Report prepared by,
Chris McIntyre
Trillium Tree Experts
613-831-4475
trilliumtree@bellnet.ca

Property owner,
1000598810 Ontario Inc.
323 Coventry Road – Unit 105
Ottawa, ON, K1K 3X6

Committee of Adjustment
Received | Reçu le

2024-11-13

City of Ottawa | Ville d'Ottawa
Comité de dérogation

This Tree Information Report is being submitted as a partial requirement for the development of this property. A site visit was conducted by Chris McIntyre, Certified Arborist ON-1219A, on October 10, 2024.

The focus of this report is to outline the current vegetation on the site, detailing species, size, and condition. While evaluating the impact the purposed development may have on the vegetation, and how to mitigate damage to retained trees.

The report is based on the current plans provided by the property owner. Moving forward if any changes are made to the purposed build, the property owner is responsible for prompting a review of this TIR.



Chris McIntyre

October 18, 2024

Date

MH-H
TIG=60.40



SHAKESPEARE STREET
(formerly FIRST STREET per Registered Plan 246)
pin 04231 -0261
(BY-LAW NO. 97 EASTVIEW)

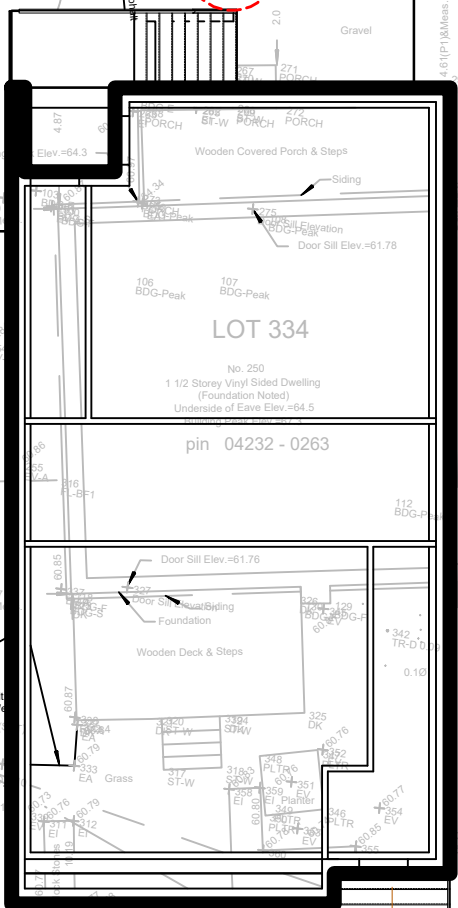
LABOR AVE

1

SITE BENCHMARK NO. 1
FH Top of Spindle
Elev.=61.83

SITE BENCHMARK NO. 2
Nail & Washer in Asphalt
Elev.=61.11

LOT 335



LOT 334

pin 04232 - 0263

LOT 333

pin 04232 - 0262

No. 201 Marier Avenue
2 Storey Building
(Siding Noted)

Vent Pipe
0.3 West

Vent Pipe
0.3 West

Vent Pipe
0.73 West
(0.80 PS)

Vent Pipe
0.27 West

BF 0.2 West

BF 0.2 West

BF 0.2 West

BF 0.2 West

BF 0.2 West

BF 0.2 West

BF 0.2 West

BF 0.2 West

BF 0.2 West

BF 0.2 West

BF 0.2 West

BF 0.2 West

BF 0.2 West

BF 0.2 West

BF 0.2 West

BF 0.2 West

BF 0.2 West

BF 0.2 West

BF 0.2 West

BF 0.2 West

BF 0.2 West

BF 0.2 West

BF 0.2 West

BF 0.2 West

BF 0.2 West

BF 0.2 West

BF 0.2 West

BF 0.2 West

BF 0.2 West

BF 0.2 West

BF 0.2 West

BF 0.2 West

BF 0.2 West

BF 0.2 West

BF 0.2 West

BF 0.2 West

BF 0.2 West

BF 0.2 West

BF 0.2 West

BF 0.2 West

BF 0.2 West

BF 0.2 West

BF 0.2 West

BF 0.2 West

BF 0.2 West

BF 0.2 West

BF 0.2 West

BF 0.2 West

BF 0.2 West

BF 0.2 West

BF 0.2 West

BF 0.2 West

BF 0.2 West

BF 0.2 West

BF 0.2 West

BF 0.2 West

BF 0.2 West

BF 0.2 West

BF 0.2 West

BF 0.2 West

BF 0.2 West

BF 0.2 West

BF 0.2 West

BF 0.2 West

BF 0.2 West

BF 0.2 West

BF 0.2 West

BF 0.2 West

BF 0.2 West

BF 0.2 West

BF 0.2 West

BF 0.2 West

BF 0.2 West

BF 0.2 West

BF 0.2 West

BF 0.2 West

BF 0.2 West

BF 0.2 West

BF 0.2 West

BF 0.2 West

BF 0.2 West

BF 0.2 West

BF 0.2 West

BF 0.2 West

BF 0.2 West

BF 0.2 West

BF 0.2 West

BF 0.2 West

BF 0.2 West

BF 0.2 West

BF 0.2 West

BF 0.2 West

BF 0.2 West

BF 0.2 West

BF 0.2 West

BF 0.2 West

BF 0.2 West

BF 0.2 West

BF 0.2 West

BF 0.2 West

BF 0.2 West

BF 0.2 West

BF 0.2 West

BF 0.2 West

BF 0.2 West

BF 0.2 West

BF 0.2 West

BF 0.2 West

BF 0.2 West

BF 0.2 West

BF 0.2 West

BF 0.2 West

BF 0.2 West

BF 0.2 West

BF 0.2 West

BF 0.2 West

BF 0.2 West

BF 0.2 West

BF 0.2 West

BF 0.2 West

BF 0.2 West

BF 0.2 West

BF 0.2 West

BF 0.2 West

BF 0.2 West

BF 0.2 West

BF 0.2 West

BF 0.2 West

BF 0.2 West

BF 0.2 West

BF 0.2 West

BF 0.2 West

BF 0.2 West

BF 0.2 West

BF 0.2 West

BF 0.2 West

BF 0.2 West

BF 0.2 West

BF 0.2 West

BF 0.2 West

BF 0.2 West

BF 0.2 West

BF 0.2 West

BF 0.2 West

BF 0.2 West

BF 0.2 West

BF 0.2 West

BF 0.2 West

BF 0.2 West

BF 0.2 West

BF 0.2 West

BF 0.2 West

BF 0.2 West

BF 0.2 West

BF 0.2 West

BF 0.2 West

BF 0.2 West

BF 0.2 West

BF 0.2 West

BF 0.2 West

BF 0.2 West

BF 0.2 West

BF 0.2 West

BF 0.2 West

BF 0.2 West

BF 0.2 West

BF 0.2 West

BF 0.2 West

BF 0.2 West

BF 0.2 West

BF 0.2 West

BF 0.2 West

BF 0.2 West

BF 0.2 West

BF 0.2 West

BF 0.2 West

BF 0.2 West

BF 0.2 West

BF 0.2 West

BF 0.2 West

BF 0.2 West

BF 0.2 West

BF 0.2 West

BF 0.2 West

BF 0.2 West

BF 0.2 West

BF 0.2 West

BF 0.2 West

BF 0.2 West

BF 0.2 West

BF 0.2 West

BF 0.2 West

BF 0.2 West

BF 0.2 West

BF 0.2 West

BF 0.2 West

BF 0.2 West

BF 0.2 West

BF 0.2 West

BF 0.2 West

BF 0.2 West

BF 0.2 West

BF 0.2 West

BF 0.2 West

BF 0.2 West

BF 0.2 West

BF 0.2 West

BF 0.2 West

BF 0.2 West

BF 0.2 West

BF 0.2 West

BF 0.2 West

BF 0.2 West

BF 0.2 West

BF 0.2 West

BF 0.2 West

BF 0.2 West

BF 0.2 West

BF 0.2 West

BF 0.2 West

BF 0.2 West

BF 0.2 West

BF 0.2 West

BF 0.2 West

BF 0.2 West

BF 0.2 West

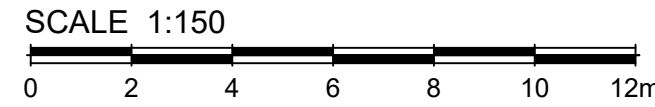
BF 0.2 West

BF 0.2 West

BF 0.2 West

LOT 234

REGISTERED



250 SHAKESPEARE STREET OTTAWA ONTARIO TREE INFORMATION REPORT



OCTOBER 18, 2024