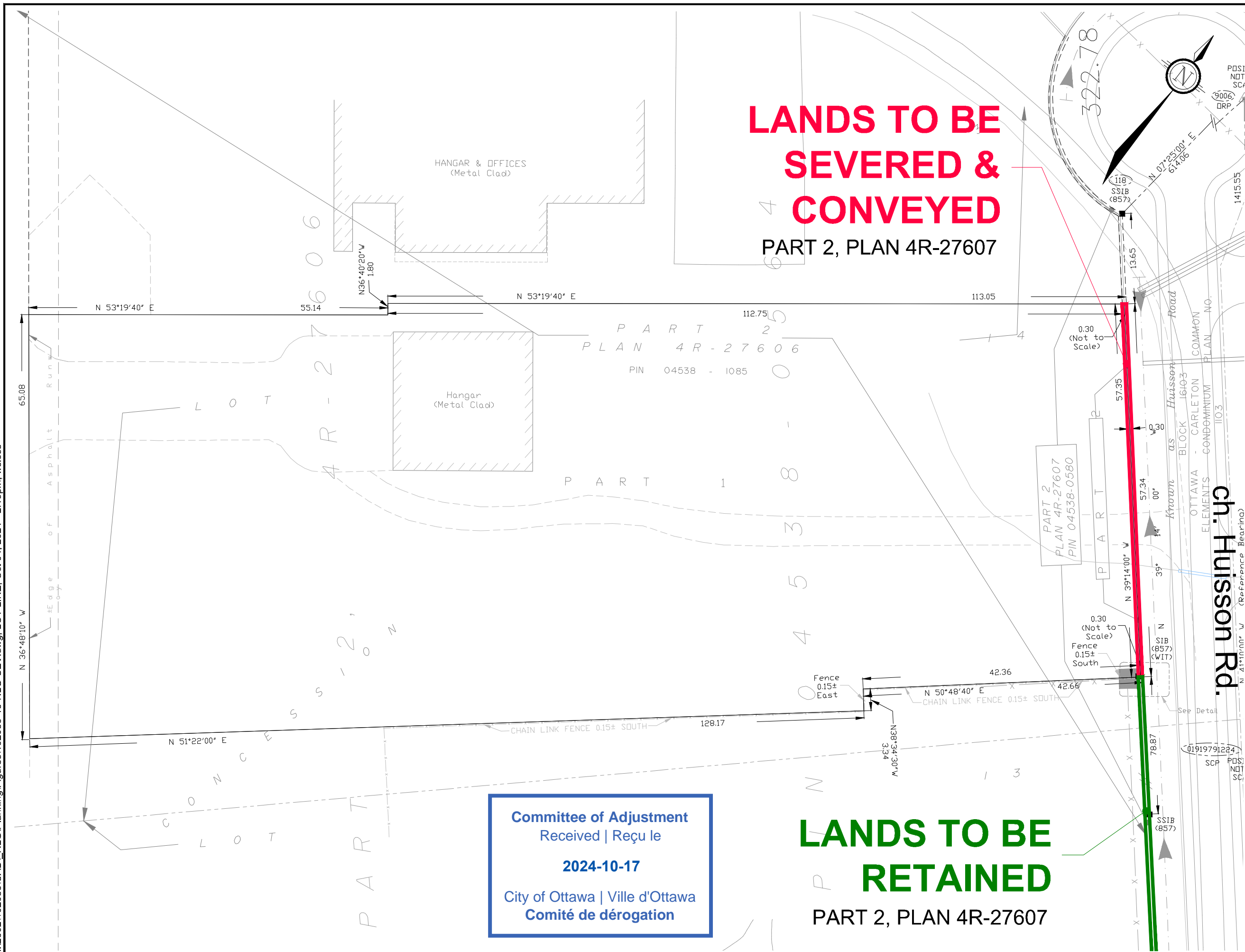


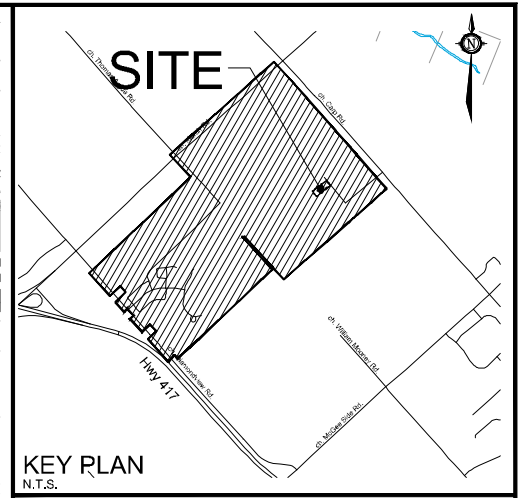
M:\2002\102085\CAD\NLG\Planning\Figures\102085-15-NLG-SEV.dwg, LOT LINE, Oct 04, 2024 - 2:19pm, wslboss



LANDS TO BE SEVERED & CONVEYED
PART 2, PLAN 4R-27607

LANDS TO BE RETAINED
PART 2, PLAN 4R-27607

Committee of Adjustment
Received | Reçu le
2024-10-17
City of Ottawa | Ville d'Ottawa
Comité de dérogation



LOT LINE ADJUSTMENT APPLICATION
PART 2, PLAN 4R-27607

PART OF LOT 13 & 14
CONCESSION 3
Geographic Township of Huntley
CITY OF OTTAWA

ch. Huissson Rd.
Reference Bearing

NOT TO SCALE

No.	REVISION	DATE	BY
2.	UPDATED PER DRAFT LEGAL	OCT 07/24	MV
1.	ISSUED FOR PRE-CONSULTATION	SEPT 04/24	MV

ISSUED
OCTOBER, 2024

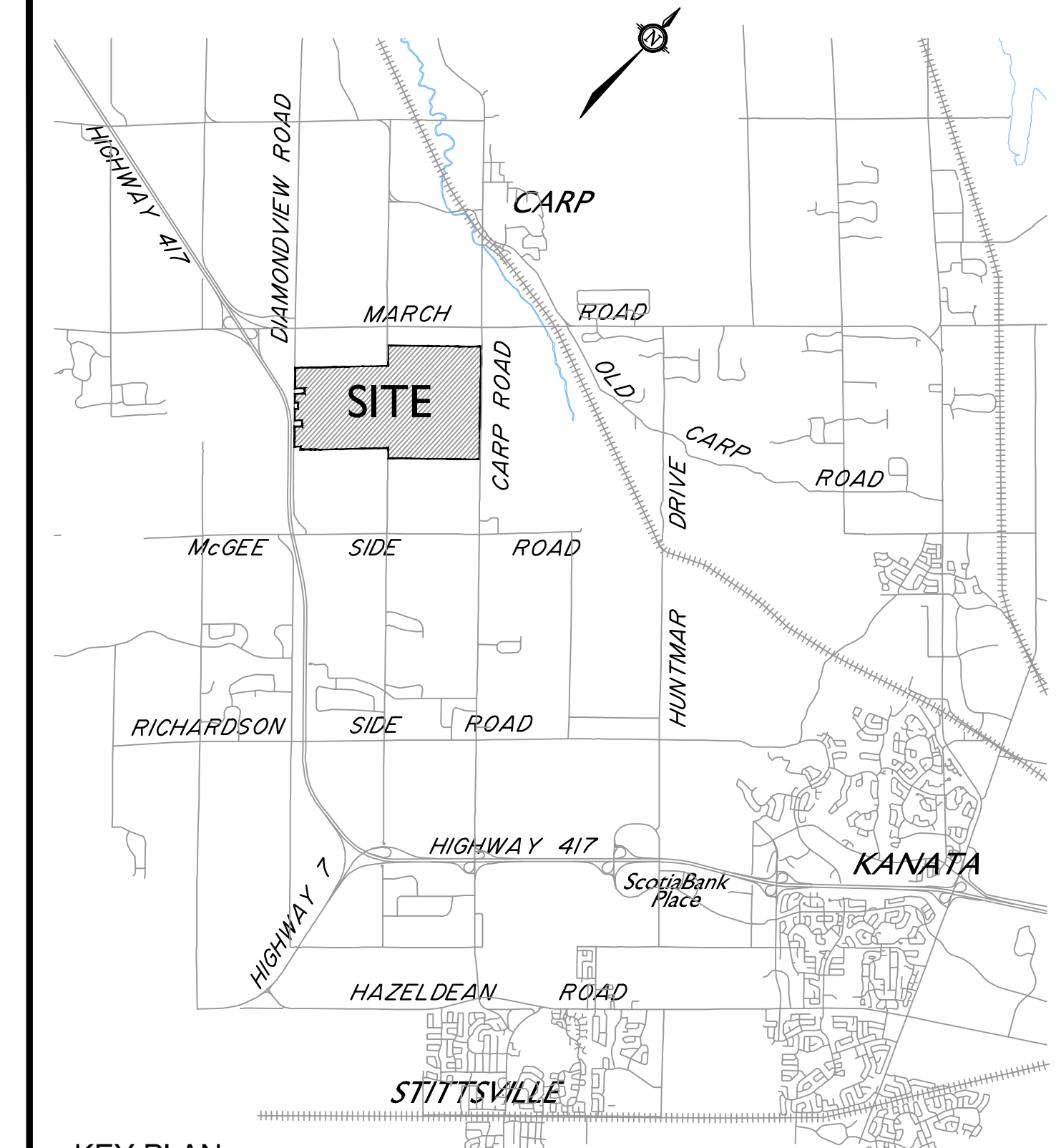
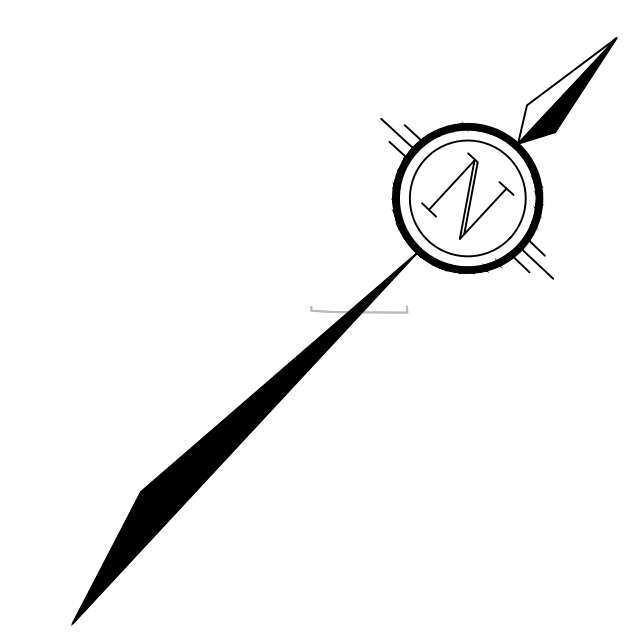
NOVATECH
Engineers, Planners & Landscape Architects
Suite 200, 240 Michael Cowpland Drive
Ottawa, Ontario, Canada K2M 1P6
Telephone: (613) 254-9643
Facsimile: (613) 254-5867
Website: www.novatech-eng.com

PROJECT No.
102085

DRAWING No.
102085-15-NLG-FIG

LEGEND

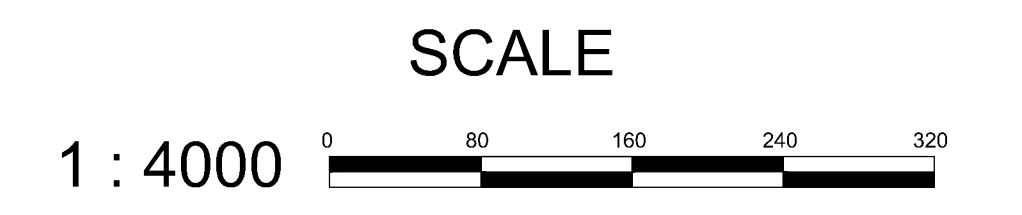
- Lands to be Retained
- Lands to be Severed



KEY PLAN
NOT TO SCALE

WEST CAPITAL AIRPARK

RETAINED LANDS CORE AIRPORT



No.	REVISION	DATE	BY
3.	REVISED FOR NLG LANDS SEVERANCE	OCT 07/24	MV
2.	PREPARED FOR COMMITTEE OF ADJUSTMENT	MAY 31/24	MV
1.	PREPARED FOR COMMITTEE OF ADJUSTMENT	JAN 24/24	MV

NOVATECH
Engineers, Planners & Landscape Architects
Suite 200, 240 Michael Cowland Drive
Ottawa, Ontario, Canada K2M 1P6
Telephone: (613) 254-9643
Facsimile: (613) 254-5867
Website: www.novatech-eng.com

DATE	OCTOBER, 2024
PROJECT No.	102085
DRAWING No.	102085-CoreAirport

M:\2024\102085\CAD\Planning\Figures\102085-CoreAirport-SEV.dwg, CORE, Oct 08, 2024, 12:20pm, webbs

METRIC
DISTANCES AND COORDINATES SHOWN ON THIS PLAN ARE IN METRES
AND CAN BE CONVERTED TO FEET BY DIVIDING BY 0.3048

COORDINATES WERE DERIVED FROM SPECIFIED CONTROL POINT
SCP 01919791224 AND FROM REAL TIME NETWORK
OBSERVATIONS (SMARTNET) ON OBSERVED REFERENCE
POINT 9006.

COORDINATES HAVE BEEN DETERMINED TO AN URBAN ACCURACY
IN ACCORDANCE WITH SECTION 14(2) OF O.REG 216/10.

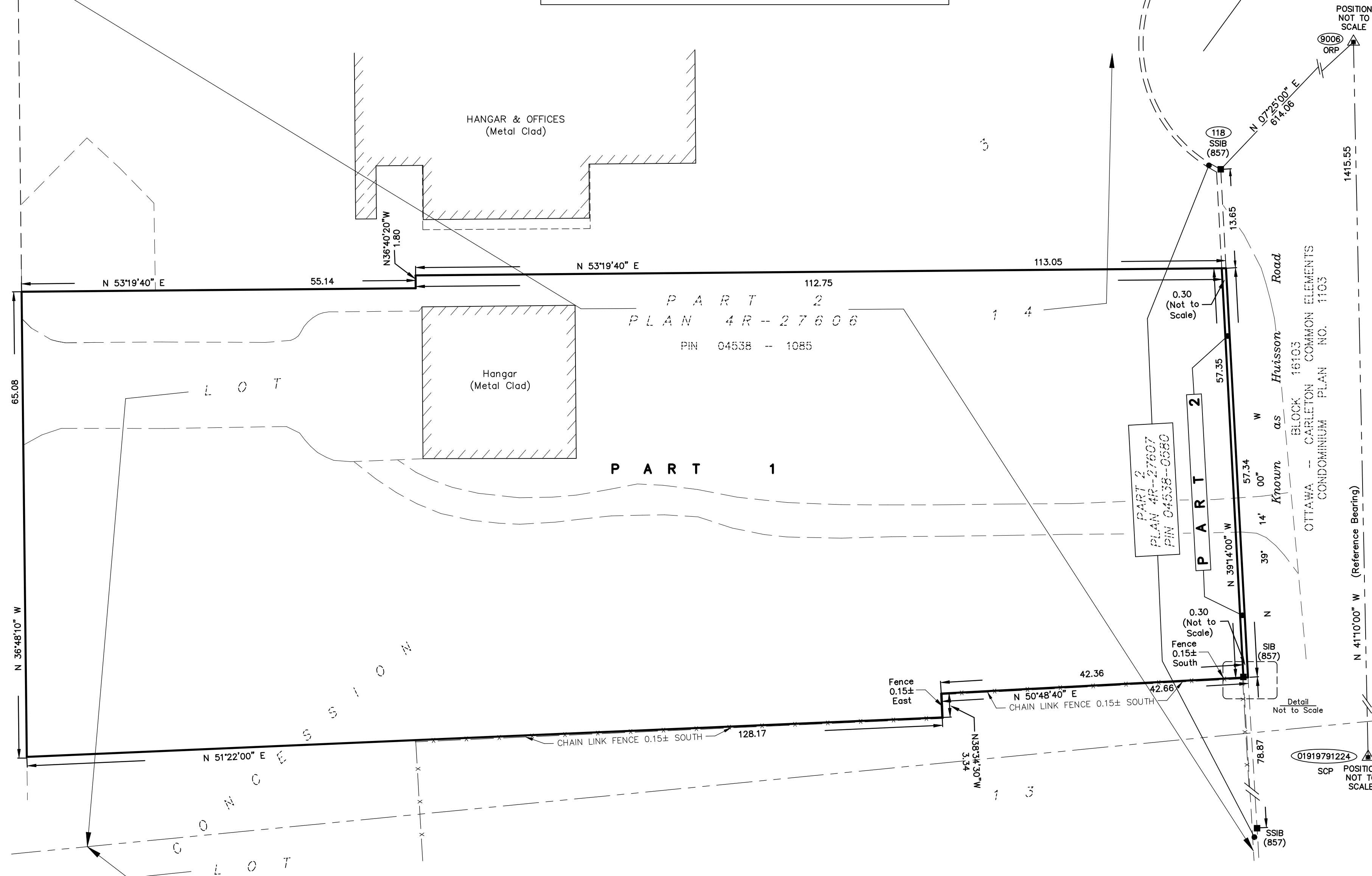
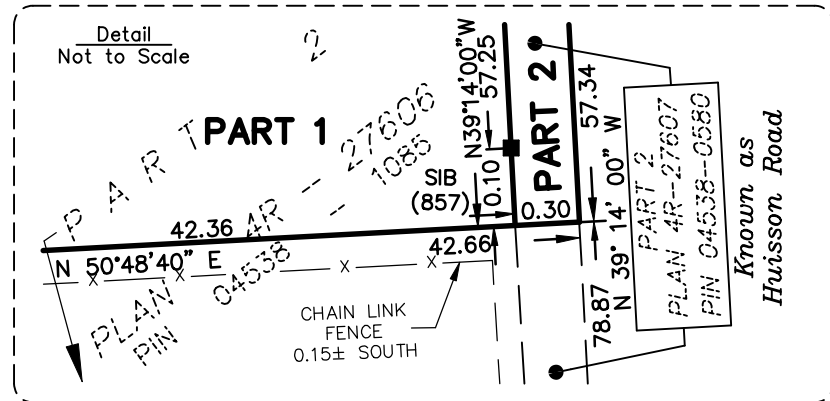
POINT ID	NORTHING	EASTING
118	5020566.56	342583.707
9006	5021175.42	342662.96
01919791224	5020109.91	343594.67

COORDINATES CANNOT IN THEMSELVES BE USED TO RE-ESTABLISH
CORNERS OR BOUNDARIES SHOWN ON THIS PLAN.

PLAN PREPARED FOR
COMMITTEE OF ADJUSTMENT PURPOSES
SEPTEMBER 26, 2024

SCHEDULE				
PART	LOT	CONCESSION	PIN	AREA (m ²)
1	PART OF LOT 14	3	PART OF 04538-1085	10,575
2				17

Committee of Adjustment
Received | Reçu le
2024-10-17
City of Ottawa | Ville d'Ottawa
Comité de dérogation



**PART OF LOT 14
CONCESSION 3
GEOGRAPHIC TOWNSHIP OF HUNTLEY
CITY OF OTTAWA**

SCALE 1 : 400
0 10 20 40 metres

THE INTENDED PLOT SIZE OF THIS PLAN IS 860mm IN WIDTH BY 460mm IN HEIGHT
WHEN PLOTTED AT A SCALE OF 1:400.
FAIRHALL, MOFFATT & WOODLAND LIMITED
ONTARIO LAND SURVEYORS

NOTES

- BEARINGS ARE GRID, DERIVED FROM HORIZONTAL CONTROL MONUMENT 01919791224 (E 343594.67, N 5020109.91) AND FROM OBSERVED REFERENCE POINT 9006 BY REAL TIMENETWORK OBSERVATIONS AND ARE REFERRED TO THE CENTRAL MERIDIAN, 76°30'W LONGITUDE MTM ZONE 9, (NAD83 ORIGINAL).
- DISTANCES ARE GROUND AND CAN BE CONVERTED TO GRID BY MULTIPLYING BY THE COMBINED SCALE FACTOR 0.999905.
- ALL SURVEY MONUMENTS FOUND ARE (857) UNLESS NOTED OTHERWISE.

LEGEND

- - SURVEY MONUMENT SET
- - SURVEY MONUMENT FOUND
- ▲ - PROJECT CONTROL MONUMENT
- SIB - STANDARD IRON BAR
- SSIB - SHORT STANDARD IRON BAR
- IB - IRON BAR
- (P1) - PLAN 4R-27606
- (S) - SET
- (M) - MEASURED
- (857) - FAIRHALL, MOFFATT & WOODLAND LIMITED, O.L.S.
- PIN - PROPERTY IDENTIFIER NUMBER
- ORP - OBSERVED REFERENCE POINT
- SCP - SPECIFIED CONTROL POINT

SURVEYOR'S CERTIFICATE

I CERTIFY THAT:
1. THIS SURVEY AND PLAN ARE CORRECT AND IN ACCORDANCE WITH THE SURVEYS ACT, THE SURVEYORS ACT, THE LAND TITLES ACT AND THE REGULATIONS MADE UNDER THEM.

2. THE SURVEY WAS COMPLETED ON

DATE

JOHN H. GUTRI
ONTARIO LAND SURVEYOR

THIS PLAN OF SURVEY RELATES TO AOLS PLAN SUBMISSION FORM NUMBER

Fairhall Moffatt & Woodland LIMITED ONTARIO LAND SURVEYORS Surveying and Land Information Services 100-600 TERRY FOX DRIVE, KANATA, ONTARIO K2L 4B6 TEL: (613) 591-2580 FAX: (613) 591-1495 www.fmw.on.ca		JOB No. AE20700
		E, N
		REFERENCE No. 140(b) - 3 Huntley
		S:\JOBS\AE20700\DWG AE207_rp.dwg (rr)