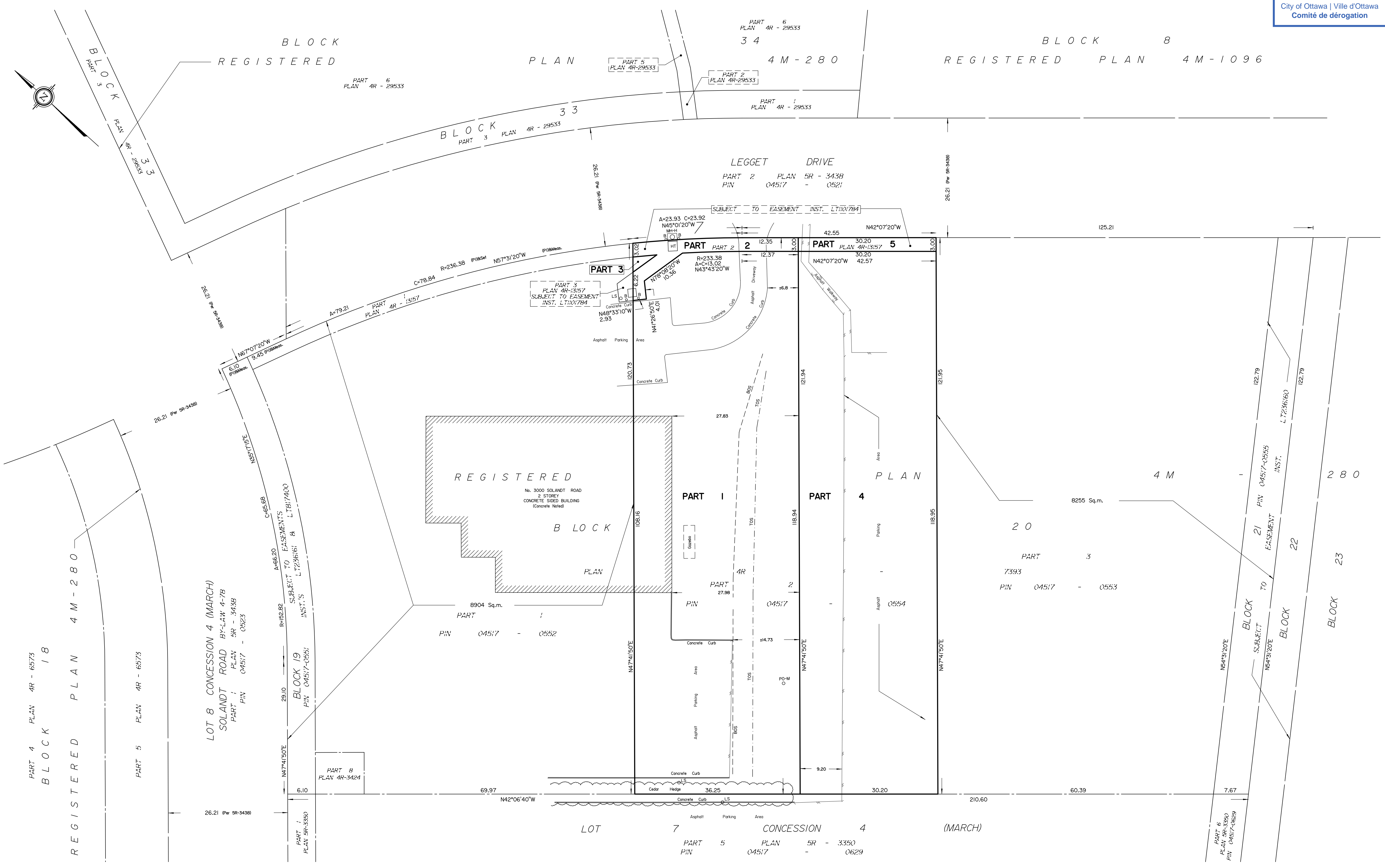


Committee of Adjustment  
Received | Reçu le  
2024-11-05  
City of Ottawa | Ville d'Ottawa  
Comité de dérogation



**SCHEDULE**

AREA (Sq.m.)	PART	BLOCK	PLAN	PIN
4254.4	1			
147.7	2	20	4M-280	04517-0554
8.8	3			
3553.0	4			
90.6	5			

Parts 2 & 5 Subject to Easement Inst. LT1101784

**PLAN OF SURVEY OF  
PART OF BLOCK 20  
REGISTERED PLAN 4M-280  
CITY OF OTTAWA**  
Surveyed by Annis, O'Sullivan, Vollebek Ltd.  
Scale 1 : 400  
The intended plot size of this plan is 914 mm in width by 610 mm in height when plotted at a scale of 1:400.

**Metric**  
DISTANCES AND COORDINATES SHOWN ON THIS PLAN ARE IN METRES AND CAN BE CONVERTED TO FEET BY DIVIDING BY 0.3048.

**Surveyor's Certificate**  
I CERTIFY THAT:  
1. This survey and plan are correct and in accordance with the Surveys Act, the Surveyors Act and the Land Titles Act and the regulations made under them.  
2. The survey was completed on the \_\_\_ day of \_\_\_\_\_, 2024.

Date \_\_\_\_\_  
E.H. Herweyer  
Ontario Land Surveyor

This plan relates to AOLS Plan Submission form number: 280

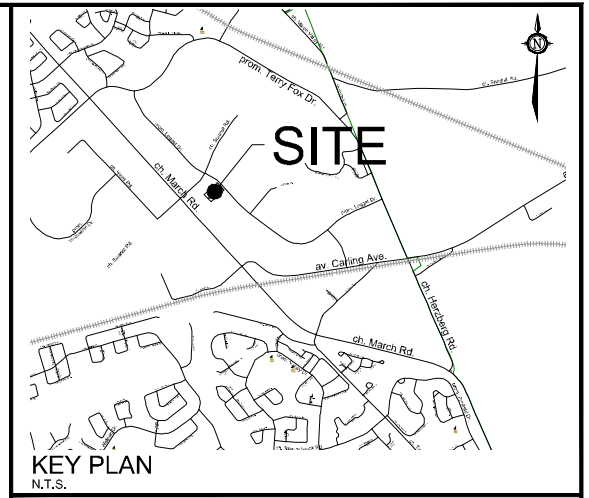
- Notes & Legend**
- Denotes
- - Survey Monument Planted
  - - Survey Monument Found
  - SIB - Standard Iron Bar
  - SSIB - Short Standard Iron Bar
  - IB - Iron Bar
  - SSIB\* - Short Standard Iron Bar
  - (WIT) - Witness
  - Meas. - Measured
  - (AOG) - Annis, O'Sullivan, Vollebek Ltd.
  - (PI) - Plan
  - (P2) - Plan
  - H-T - Hydro Transformer
  - o B - Bollard
  - o PO-M - Metal Pole
  - o MHH - Maintenance Hole (Hydro)
  - o LS - Light Standard

Distances shown on this plan are ground distances and can be converted to grid distances by multiplying by the combined scale factor of 0.999913.  
Bearings are grid, derived from Can-Net 2016 Real Time Network GPS observations on reference points A and B, shown hereon, having a bearing of Nxx°xx'xx"W and are referenced to Specified Control Points 01919680037 and 01919791051, MTM Zone 9 (76°30' West Longitude) NAD-83 (original).  
Coordinates are derived from Can-Net 2016 Real Time Network GPS observations referenced to Specified Control Points 01919680037 and 01919791051, MTM Zone 9 (76°30' West Longitude) NAD-83 (original).  
Coordinate values are to urban accuracy in accordance with O. Reg. 216/10.  
.01919680037 Northing 5023507.89 Easting 351533.87  
.01919791051 Northing 5032569.51 Easting 343633.72  
.Point A Northing Easting  
.Point B Northing Easting  
Caution: Coordinates cannot, in themselves, be used to re-establish corners or boundaries shown on this plan.

**LANDS TO BE SEVERED & CONVEYED**  
**AREA= 4410.9m<sup>2</sup> / (0.44 Ha)**

**Committee of Adjustment**  
 Received | Reçu le  
 2024-11-05  
 City of Ottawa | Ville d'Ottawa  
 Comité de dérogation

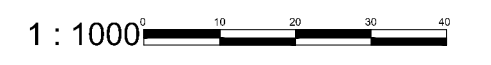
**LANDS TO BE RETAINED**  
**AREA= 3683.6m<sup>2</sup> / (0.36Ha)**



# CONSENT APPLICATION

3000 SOLANDT ROAD

PART OF BLOCK 20  
 REGISTERED PLAN 4M-280  
 CITY OF OTTAWA



No.	REVISION	DATE	BY
1.	ISSUED FOR CONSENT APPLICATION	OCT 21/24	MV

**NOVATECH**  
 Engineers, Planners & Landscape Architects  
 Suite 200, 240 Michael Cowpland Drive  
 Ottawa, Ontario, Canada K2M 1P6  
 Telephone: (613) 254-9643  
 Facsimile: (613) 254-5857  
 Website: www.novatech-eng.com

ISSUED  
**OCTOBER, 2024**  
 PROJECT No.  
**123128**  
 DRAWING No.  
**123128-SEV2**

M:\2023\123128\CAD\Planning\Figures\123128-SEV2.dwg, SEV1, Oct 21, 2024 - 1:58pm, wslloss