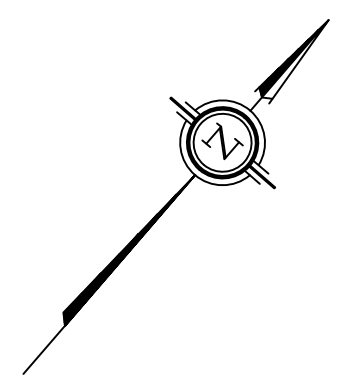
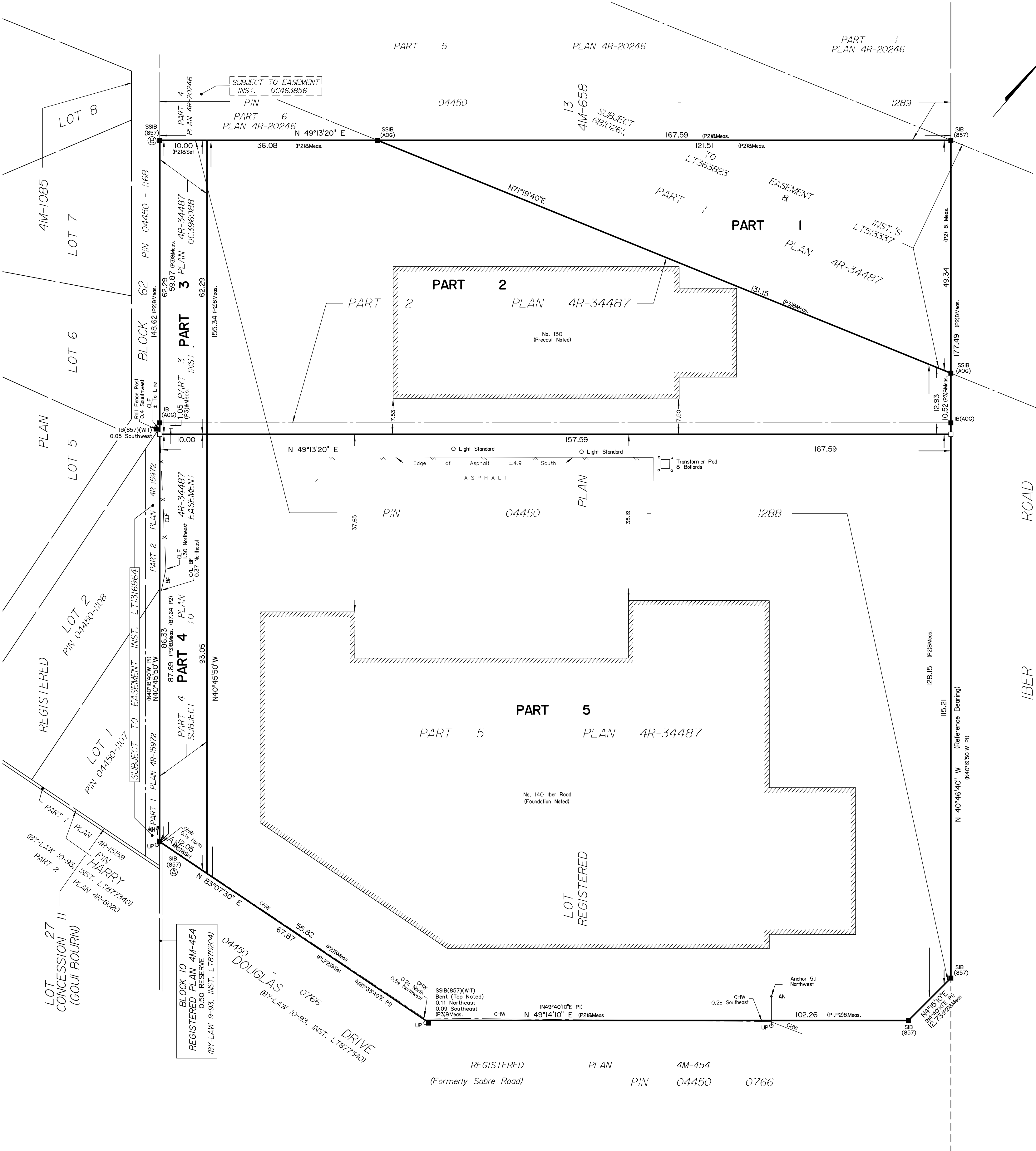


Committee of Adjustment
Received | Reçu le
Revised | Modifié le : 2024-09-17
City of Ottawa | Ville d'Ottawa
Comité de dérogation



SCHEDULE				
AREA (Sq.m.)	PART	LOT	PLAN	PIN
10439	1	PART OF 13	4M-658	ALL OF 04450-1288
	2			
	3			
4				
5				
19707				

Part 1: Subject to easement Inst.'s GB10261, LT363823, & LT513337.
Parts 3 and 4: Subject to easement Inst. OC396088.

PLAN OF SURVEY OF
PART OF LOT 13
REGISTERED PLAN 4M-658
CITY OF OTTAWA
Surveyed by Annis, O'Sullivan, Vollebakk Ltd.

Scale 1 : 500
20 15 10 5 0 10 20 Metres

The intended plot size of the plan is 610 mm in width by 610 mm in height when plotted at a scale of 1:500.

Metric
DISTANCES AND COORDINATES SHOWN ON THIS PLAN ARE IN METRES AND CAN BE CONVERTED TO FEET BY DIVIDING BY 0.3048.

Surveyor's Certificate
I CERTIFY THAT:
1. This survey and plan are correct and in accordance with the Surveys Act, the Surveyors Act and the Land Titles Act and the regulations made under them.
2. The survey was completed on the ___th day of _____, 2024.

Date _____ E. H. Herweyer
Ontario Land Surveyor

This plan of survey relates to AOLS Plan Submission Form Number V-

- Notes & Legend
- Denotes Survey Monument Planted
 - Survey Monument Found
 - SIB Standard Iron Bar
 - SSIB Short Standard Iron Bar
 - IB Iron Bar
 - (WIT) Witness
 - (AOG) Annis, O'Sullivan, Vollebakk Ltd.
 - Meas. Measured
 - (P1) Registered Plan 4M-658
 - (P2) Plan 4R-19781
 - (P3) Plan 4R-34487
 - CLF Chain Link Fence
 - BF Board Fence
 - Utility Pole
 - AN Anchor
 - OHW Overhead Wires

Distances shown on this plan are ground distances and can be converted to grid distances by multiplying by the combined scale factor of 0.999910.

Bearings are grid, derived from the southwesterly limit of Iber Road shown to be N40°46'40" W on Plan 4R-19781 and are referred to the Central Meridian of MTM Zone 9 (76°30' West Longitude) NAD-83 (original).

For comparison purposes, bearings shown on Plans P1 are astronomic bearings.

Coordinates are derived from Can-Net 2016 Real Time Network GPS observations referenced to Specified Control Points 01919750705 and 01919770923, MTM Zone 9 (76°30' West Longitude) NAD-83 (original).

Coordinate values are to urban accuracy in accordance with O. Reg. 216/10.

.01919750705	Northing	5016816.93	Easting	360806.84
.01919770923	Northing	5013536.21	Easting	348275.92
.Point A	Northing	5015125.24	Easting	351525.42
.Point B	Northing	5015237.80	Easting	351428.38

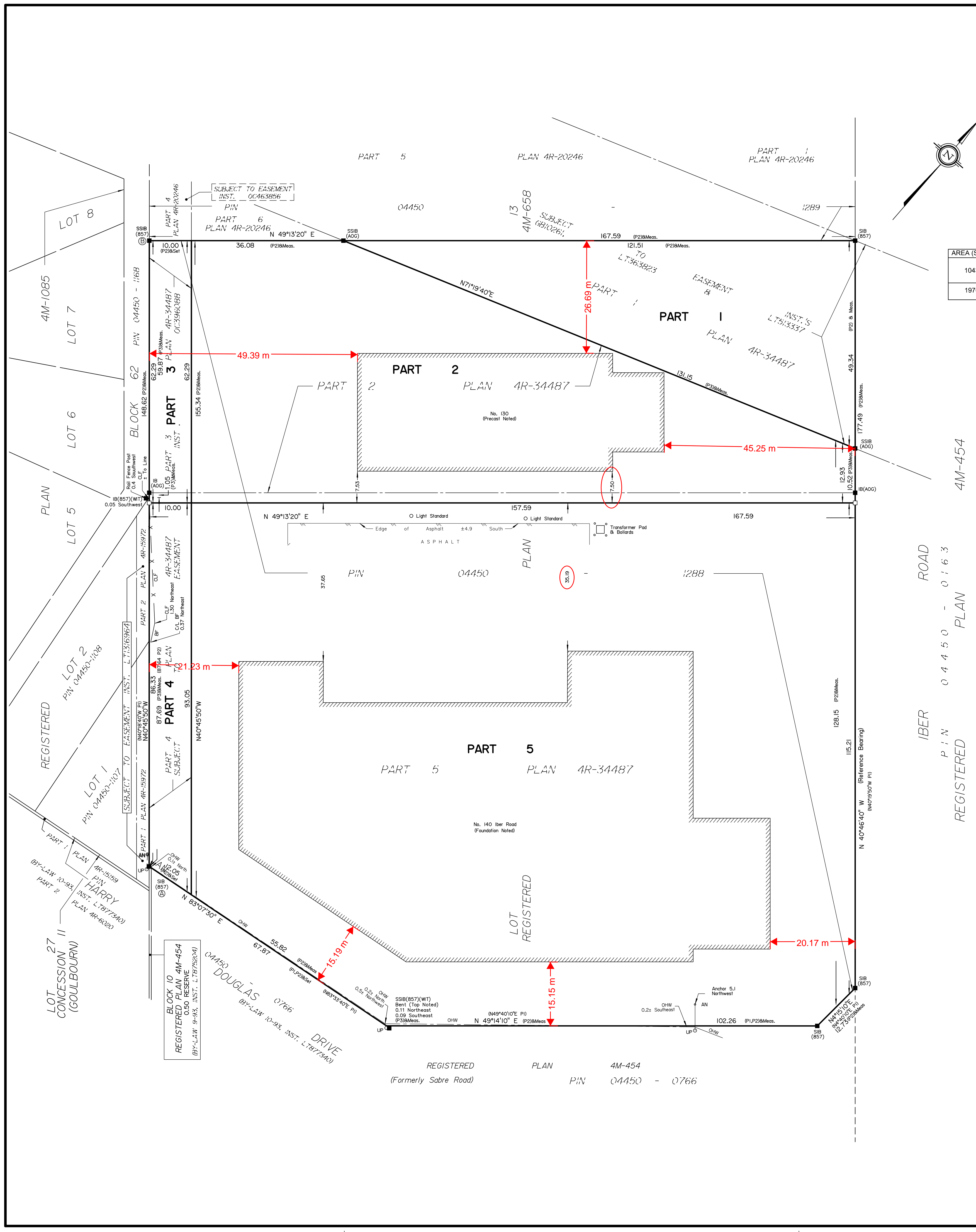
Caution: Coordinates cannot, in themselves, be used to re-establish corners or boundaries shown on this plan.

REGISTERED PLAN 4M-454
(Formerly Sabre Road) PIN 04450 - 0766

Building Setbacks Sketch

Novatech Markup

September 17, 2024



SCHEDULE				
AREA (Sq.m.)	PART	LOT	PLAN	PIN
10439	1	PART OF 13	4M-658	ALL OF 04450-1288
	2			
	3			
4				
5				
19707				

Part 1: Subject to easement Inst.'s GB10261, LT363823, & LT513337.
Parts 3 and 4: Subject to easement Inst. OC396088.

PLAN OF SURVEY OF PART OF LOT 13 REGISTERED PLAN 4M-658 CITY OF OTTAWA
Surveyed by Annis, O'Sullivan, Vollebek Ltd.

Scale 1 : 500
20 15 10 5 0 10 20 Metres

The intended plot size of the plan is 610 mm in width by 610 mm in height when plotted at a scale of 1:500.

Metric
DISTANCES AND COORDINATES SHOWN ON THIS PLAN ARE IN METRES AND CAN BE CONVERTED TO FEET BY DIVIDING BY 0.3048.

Surveyor's Certificate
I CERTIFY THAT:
1. This survey and plan are correct and in accordance with the Surveys Act, the Surveyors Act and the Land Titles Act and the regulations made under them.
2. The survey was completed on the ___th day of _____, 2024.

Date
E. H. Herweyer
Ontario Land Surveyor

This plan of survey relates to AOLS Plan Submission Form Number V-

- Notes & Legend**
- Denotes Survey Monument Planted
 - Survey Monument Found
 - SIB Standard Iron Bar
 - SSIB Short Standard Iron Bar
 - IB Iron Bar
 - (WIT) Witness
 - (AOG) Annis, O'Sullivan, Vollebek Ltd.
 - Meas. Measured
 - (P1) Registered Plan 4M-658
 - (P2) Plan 4R-19781
 - (P3) Plan 4R-34487
 - CLF Chain Link Fence
 - BF Board Fence
 - Utility Pole
 - AN Anchor
 - OHW Overhead Wires

Distances shown on this plan are ground distances and can be converted to grid distances by multiplying by the combined scale factor of 0.999910.

Bearings are grid, derived from the southwesterly limit of Iber Road shown to be N40°46'40" W on Plan 4R-19781 and are referred to the Central Meridian of MTM Zone 9 (76°30' West Longitude) NAD-83 (original).

For comparison purposes, bearings shown on Plans P1 are astronomic bearings.

Coordinates are derived from Can-Net 2016 Real Time Network GPS observations referenced to Specified Control Points 01919750705 and 01919770923, MTM Zone 9 (76°30' West Longitude) NAD-83 (original).

Coordinate values are to urban accuracy in accordance with O. Reg. 216/10.

.01919750705	Northing	5016816.93	Easting	360806.84
.01919770923	Northing	5013536.21	Easting	348275.92
.Point A	Northing	5015125.24	Easting	351525.42
.Point B	Northing	5015237.80	Easting	351428.38

Caution: Coordinates cannot, in themselves, be used to re-establish corners or boundaries shown on this plan.

REGISTERED PLAN 4M-454 (Formerly Sabre Road)
PIN 04450 - 0766