

SCHEDULE			
PART	LOT	CONCESSION	PIN
1			
2	PART OF LOT 23	1	04282-0673
3			
4			

PART 1 TO 4 AS SHOWN.

PLAN OF SURVEY OF
**PART OF LOT 23
 CONCESSION 1 (OTTAWA FRONT)**
 (GEOGRAPHIC TOWNSHIP OF NEPEAN)

CITY OF OTTAWA
 Scale 1:200

THE INTENDED PLOT SIZE OF THIS PLAN IS 114.40m IN WIDTH BY 60.63m IN HEIGHT WHEN ROTATED AT A SCALE OF 1:200.

Stantec Geomatics Ltd.

METRIC CONVERSION
 DISTANCES AND COORDINATES SHOWN ON THIS PLAN ARE IN METERS AND CAN BE CONVERTED TO FEET BY MULTIPLYING BY 0.3048.

LEGEND

SYMBOL	DESCRIPTION	SYMBOL	DESCRIPTION
+	ROUND MEASUREMENTS	+	ROUND MEASUREMENTS
•	30' BENCHMARK	•	30' BENCHMARK
•	IRON BAR	•	IRON BAR
•	ROUND IRON BAR	•	ROUND IRON BAR
•	STANDARD IRON BAR	•	STANDARD IRON BAR
•	SHORT STANDARD IRON BAR	•	SHORT STANDARD IRON BAR
•	CUT CROSS	•	CUT CROSS
•	CONCRETE PIN	•	CONCRETE PIN
•	WIRE	•	WIRE
•	PROPERTY IDENTIFICATION NUMBER	•	PROPERTY IDENTIFICATION NUMBER
•	MARKER	•	MARKER
•	PROPORTIONAL	•	PROPORTIONAL
•	ORIGIN UNIFORM	•	ORIGIN UNIFORM
•	STANTEC GEOMATICS LTD.	•	STANTEC GEOMATICS LTD.
•	PLAN BY NOVEMBER 05/2014	•	PLAN BY NOVEMBER 05/2014
•	ANNE, OTTAWA, ONTARIO, CANADA	•	ANNE, OTTAWA, ONTARIO, CANADA

DATA SCALE CONVERSION
 DISTANCES ARE GIVEN IN METERS AND CAN BE CONVERTED TO FEET BY MULTIPLYING BY THE COMBINED SCALE FACTOR OF 0.3048.

BEARING NOTE
 BEARINGS ARE GIVEN FROM THE CANADIAN NATIONAL MAGNETIC OBSERVATIONS ON THE HORIZONTAL CONTROL MEASUREMENTS 1975/85 AND 1985/95, CENTRAL AMERICAN 74/82 WEST LONGITUDE ZONE 18N MAGNETIC (ORIGINAL).
 1975/85 N 80°00'00" W E 338888.24
 1985/95 N 50°00'00" W E 338888.24

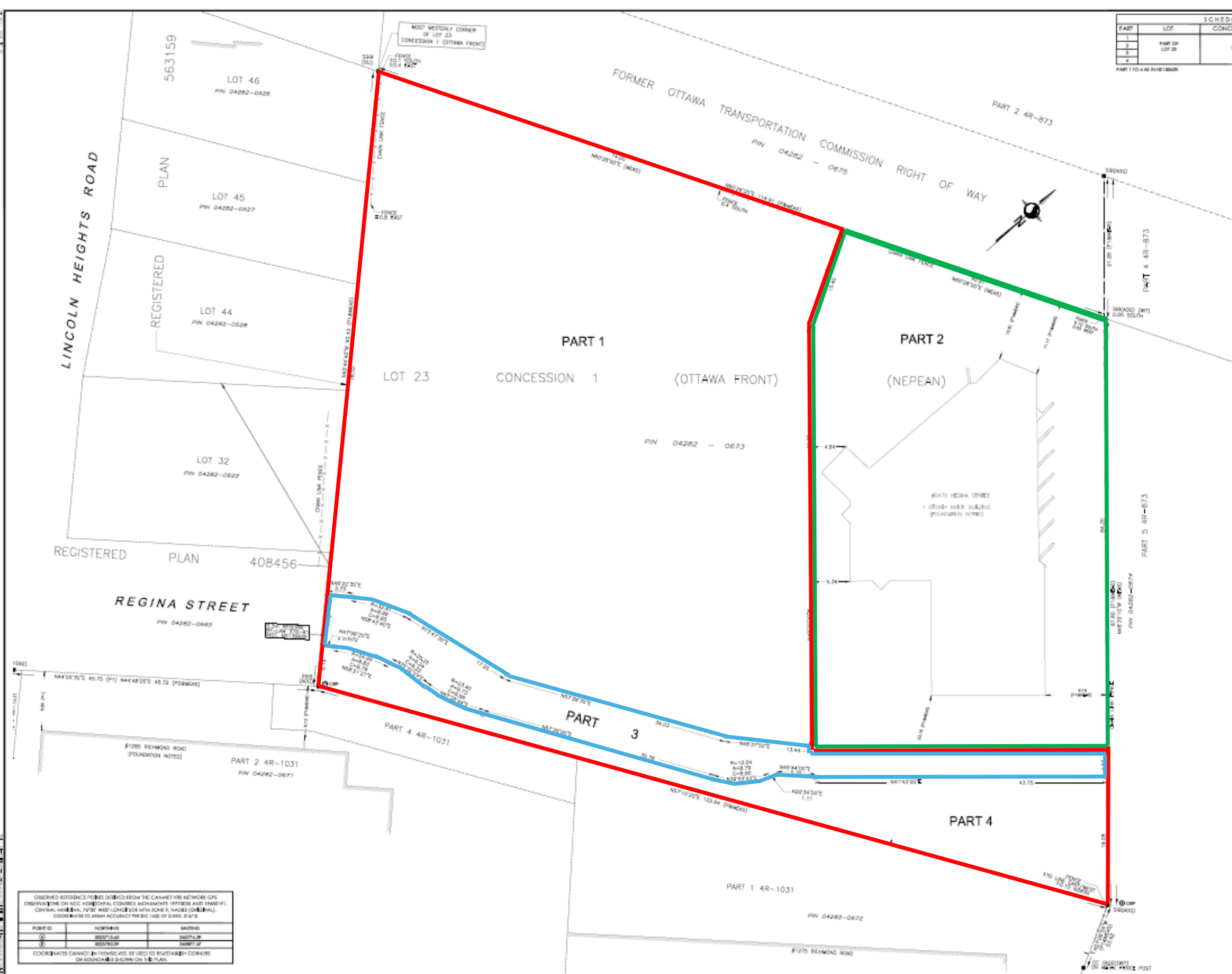
**Committee of Adjustment
 Received | Reçu le**
2024-10-07
 City of Ottawa | Ville d'Ottawa
 Comité de dérogation

SURVEYOR'S CERTIFICATE

- I CERTIFY THAT:
- THE SURVEY AND PLAN ARE CORRECT AND IN ACCORDANCE WITH THE SURVEY ACT, THE SURVEYORS ACT AND THE LAND USES ACT AND THE REGULATIONS MADE UNDER THEM.
 - THE SURVEY WAS COMPLETED ON THE DAY OF . . . 2024.

DRAWN: SM CHECKED: CT PWA: CT FIELD: * PROJECT NO: 16161780-214

Stantec
 Stantec Geomatics Ltd.
 CANADA LAND SURVEYORS
 ONTARIO LAND SURVEYORS
 1281 CLIVE AVENUE, SUITE 400
 OTTAWA, ONTARIO K2C 3S4
 TEL: 613-270-4400 FAX: 613-270-4401
 STANTEC.COM



OBSERVED REFERENCE POINTS DERIVED FROM THE CANADIAN NATIONAL NETWORK GPS OBSERVATIONS ON THE HORIZONTAL CONTROL MEASUREMENTS 1975/85 AND 1985/95, CENTRAL AMERICAN 74/82 WEST LONGITUDE ZONE 18N MAGNETIC (ORIGINAL). COORDINATES TO BE USED TO BEAR ACCURACY FOR THE DATE OF THIS PLAN.

POINT ID	NORTHING	EASTING
01	563159.44	34074.38
02	563159.44	34074.38
03	563159.44	34074.38

COORDINATES CANNOT BE TRUSTED TO BE USED TO LOCATE CORNERS OR BOUNDARIES SHOWN ON THIS PLAN.