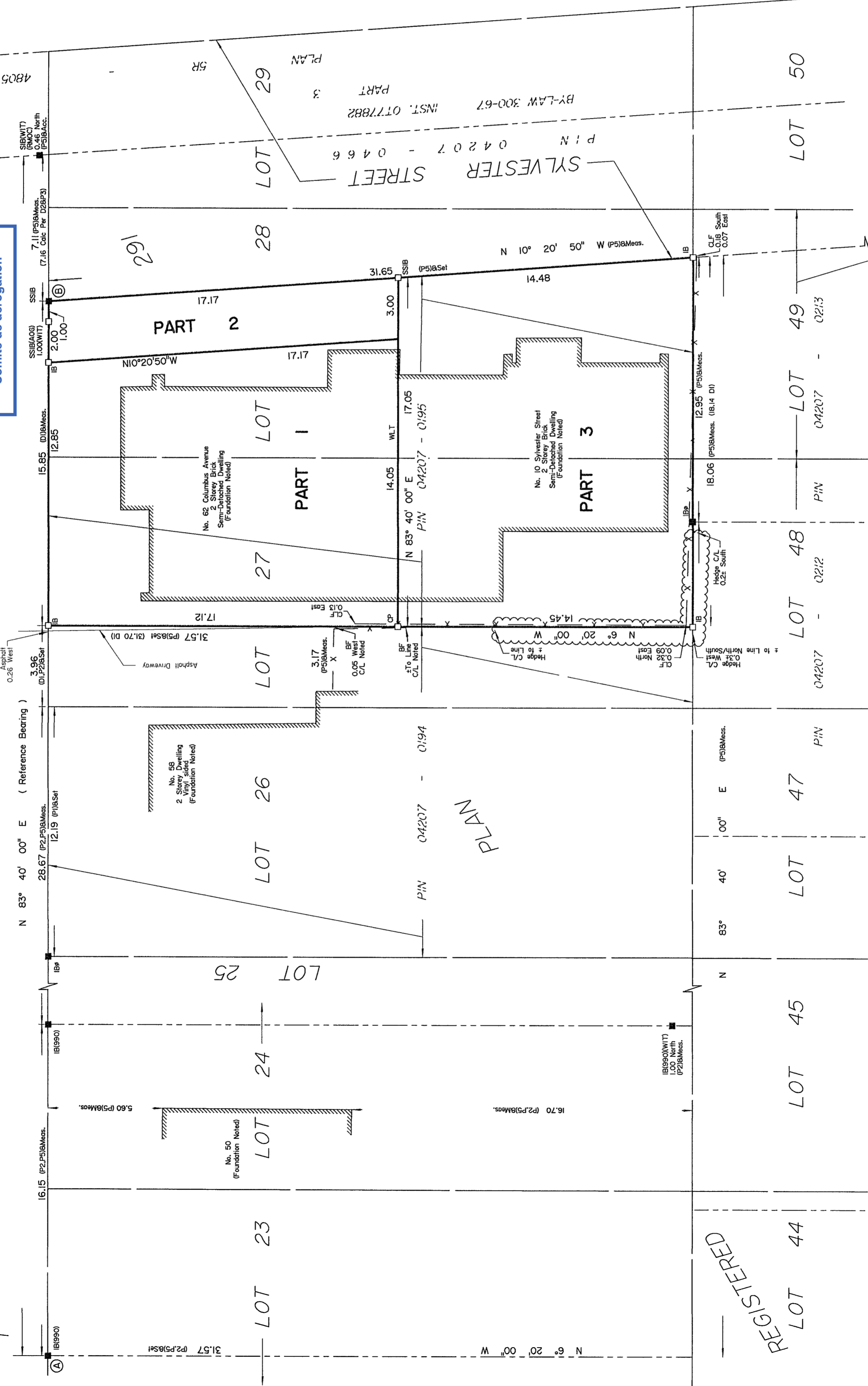


COLUMBUS AVENUE
P I N 0 4 2 0 7 - 0 4 6 0

Committee of Adjustment
Received | Reçu le
2025-01-07
City of Ottawa | Ville d'Ottawa
Comité de dérogation



Scale 1 : 150
0 1.5 3.0 4.5 6 Metres

Metric
DISTANCES AND COORDINATES SHOWN ON THIS PLAN
ARE IN METRES AND CAN BE CONVERTED TO FEET BY
DIVIDING BY 0.3048.

Surveyor's Certificate

I CERTIFY THAT:
1. This survey and plan are correct and in accordance with the Surveys Act, the Surveyors Act and the Land Titles Act and the regulations made under them.
2. The survey was completed on the 2nd day of September, 2021.

T. Hartwick
Date: 09/02/21
T. Hartwick
Ontario Land Surveyor

Notes & Legend

- Denotes
- Survey Monument Planted
- Survey Monument Found
- Standard Iron Bar
- SSIB
- Short Standard Iron Bar
- Iron Bar
- Round Iron Bar
- Concrete Pin
- Witness
- (AOG)
- Annis, O'Sullivan, Vollebek Ltd.
- Measured
- Calculated
- Centreline of Wall ± to Line
- Acc.
- Chain Link Fence
- CLF
- Board Fence
- C/L
- Centreline
- (P1)
- Registered Plan 291
- (P2)
- (990) Plan, October 12, 2016
- (P3)
- Plan 5R-4805
- (P4)
- (1319) Plan, September 22, 1993
- (AOG) Plan, September 14, 2018
- (D1)
- Inst. N287859
- (D2)
- Inst. GL45638 (Fourthly)

I REQUIRE THIS PLAN TO BE DEPOSITED UNDER THE LAND TITLES ACT.
DATE: 09/02/21
T. Hartwick
ONTARIO LAND SURVEYOR

SCHEDULE		PLAN	PIN
PART	LOT		
1	Part of 27 and 28	291	All of 04207-0195
2	Part of 28		
3	Part of 27 and 28		

**PLAN OF SURVEY OF
PART OF LOTS 27 AND 28
REGISTERED PLAN 291
CITY OF OTTAWA**

Surveyed by Annis, O'Sullivan, Vollebek Ltd.

Distances shown on this plan are ground distances and can be converted to grid distances by multiplying by the combined scale factor of 0.999944.
Bearings are Grid, derived from the southerly limit of Columbus Avenue, shown to be N 83°40'00" E on (990) Plan, October 12, 2016.

Coordinates are derived from Can-Net 2016 Real Time Network GPS observations referenced to Specified Control Points 01919680105 and 0198434761, MTM Zone 9 (76°30' West Longitude) NAD-83 (original).
Coordinate values are to urban accuracy in accordance with O. Reg. 216/10.

- .01919680105 Northing 5024915.16 Easting 373971.65
 - .019198434761 Northing 5036178.12 Easting 372436.11
 - .Point A Northing 5032161.54 Easting 370226.93
 - .Point B Northing 5032168.67 Easting 370291.16
- Caution: Coordinates cannot, in themselves, be used to re-establish corners or boundaries shown on this plan.

GL YNW AVENUE
(FORMERLY GL/IN AVENUE)