

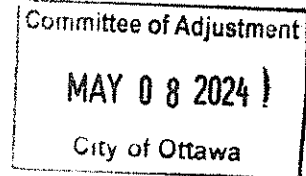
Tree King
5723 Loyalist St
Osgoode, ON K0A2W0



613-627-2017
info@treekingottawa.ca
www.treekingottawa.ca

May 2, 2024

Tree Information Report Long



For:

D.W. Inc.
Yousef Abuzribeh
10 Meadowlands Drive
Nepean, ON K2G 2R2

This report details pre-construction tree information for the above property in Ottawa, ON. The need for this report is related to trees protected under the City of Ottawa's Tree Protection By-law (By-law no. 2020-340). The work proposed for this residential property consists of excavation and new construction. This tree information report outlines all impacted distinctive trees on the subject property and on adjacent private properties. Within the inner & outer urban area of Ottawa distinctive trees are considered as having diameter breast height (DBH) of 30 cm or greater. Eleven distinct trees were found on **10 Meadowland Drive**. One city tree could potentially be impacted by the project. A site visit for this report was completed in early May 2024.

The attributes of the relevant trees are noted in tables 1 on page 2 of this report. The location of each tree is shown on the tree information plan included on page 3.

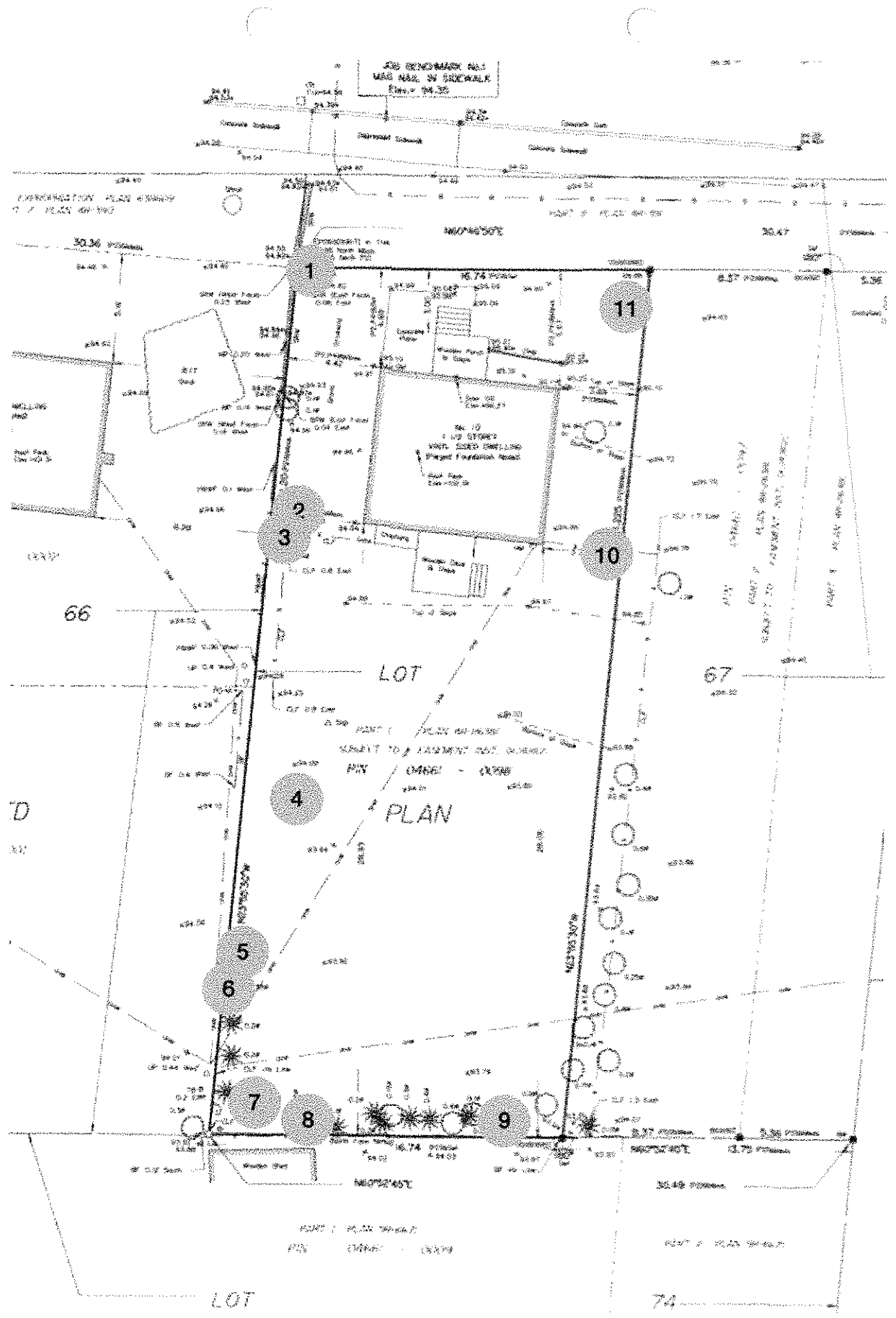
FEDERAL AND PROVINCIAL REGULATIONS

Federal and provincial regulations can be applicable to trees on private and public property. The following regulation have been considered for this property:

- 1) Endangered Species Act (2007): No butternuts (*Juglans cinerea*) were identified on the subject or adjacent properties. This species of tree is listed as threatened under the Province of Ontario's Endangered Species Act (2007) and so is protected from harm.
- 2) Migratory Bird Convention Act (1994): In the period between April and August of each year nest surveys must be performed by a suitably trained person no more than five (5) days before trees or other similar nesting habitat are to be removed.

Table 1: Tree information for 10 Meadowland Drive

Tree #	Tree Species	DBH (cm)	Ownership	Tree Condition	Reason for removal	Arborist recommendation
1	White Oak	82	City of Ottawa	Good; NO obvious signs of decay, main stem looks solid, compacted root zone from gravel driveway, needs pruning.	NA (to be preserved)	Preserve/Prune
2	Red Pine	32	Private	Fair; no signs of decay in main stem, canopy unbalanced due to surrounding trees, light storm damage in upper canopy	NA (to be preserved)	Preserve/Prune
3	Red Pine	31	Private	Fair; main stem shows signs of sapsucker damage, no significant decay noted, canopy is unbalanced due to proximity to surrounding trees	NA (to be preserved)	Preserve/Prune
4	Silver Maple	113	Private	Poor; major decay in main stem with large cavities present - decay and cavities present in lower canopy with significant storm damage - decay and cavities in upper canopy	Potential Hazard	Removal
5	Red Pine	31.5	Private	Poor; main stem shows no obvious decay - upper canopy is bare due to old storm damage - top of tree has died	Potential Hazard	Removal
6	Red Pine	36.5	Private	Fair; sapsucker damage along main stem - canopy is unbalanced due to proximity of neighbouring trees - leaning towards neighbours property	NA (to be preserved)	Preserve/Prune
7	Ash	56	Private	Dead; this tree was infested with emerald ash borer at some point in the past and is now dead	Dead	Removal
8	Box Elder	41.5	Private	Very Poor; decay along main stem and at first major unions - one main stem completely decayed and broken off - cavities present	Major Decay	Removal
9	Box Elder	56	Private	Poor; co-dominant with included bark - one of the main stems has a split running through it - no obvious signs of decay in the upper canopy	Co-dominant Limb with split	Removal
10	Silver Maple	42.5	Private	Fair; decay present at the base of the main stem - co dominant with included bark- chainlink fence has been included in the main stem - upper canopy shows little decay or damage	NA (to be preserved)	Preserve/Prune
11	Red Pine	33	Private	Dead	Dead	Removal



TREE PRESERVATION AND PROTECTION MEASURES

Preservation and protection measures are intended to mitigate damage of preserved distinct trees during the construction period. The following measures are the minimum requirements outlined by the City of Ottawa to ensure the trees survival during and after construction. They are to be implemented prior to any site works and maintained for the duration of all construction.

1. As per the City of Ottawa's tree protection barrier specification, erect a fence as close as possible to the critical rooting zone (CRZ) of the tree(s);
2. Do not place any material or equipment within the CRZ of the tree(s);
3. Do not attach any signs, notices or posters to any tree;
4. Do not raise or lower the existing grade within the CRZ without approval;
5. Tunnel or bore instead of trenching within the CRZ of any tree;
6. Do not damage the root system, trunk or branches of any tree;
7. Ensure that exhaust fumes from all equipment are not directed towards any tree's crown.

The critical root zone (CRZ) is established as being 10 centimetres from the trunk of a tree for every centimetre of trunk diameter at breast height (DBH). The CRZ is calculated as $DBH \times 10$ cm.

REPLACEMENT TREE PLANTING OR COMPENSATION

As the property is within the inner urban area of Ottawa the following ratios are used in terms of replacement tree planting: 2:1 for each distinctive tree measuring 30-49 cm in diameter and 3:1 for each distinctive tree measuring 50 cm or greater in diameter. Financial compensation may be accepted if some of the required compensation trees cannot be accommodated on the site. Developments proceeding under the Planning Act will be required to provide suitable numbers of new or replacement trees through the required Landscape Plan.

Report Prepared By:

Michael Robinson
(ISA ON-2838A)

Tree King
613-627-2017
www.treekingottawa.ca