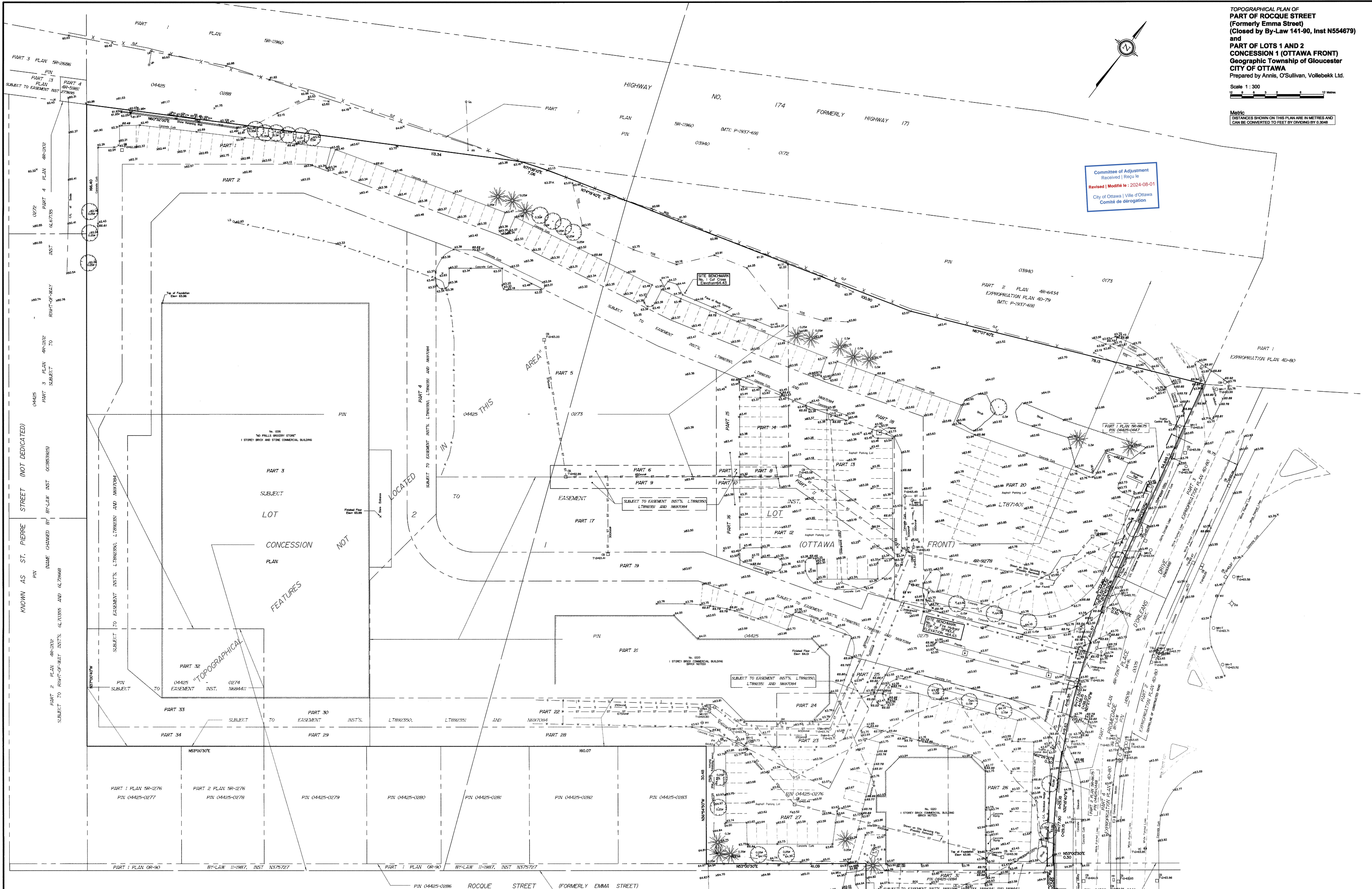


Committee of Adjustment
 Received / Reçu le
 Revised / Modifié le : 2024-08-01
 City of Ottawa / Ville d'Ottawa
 Comité de dérogation



Notes & Legend

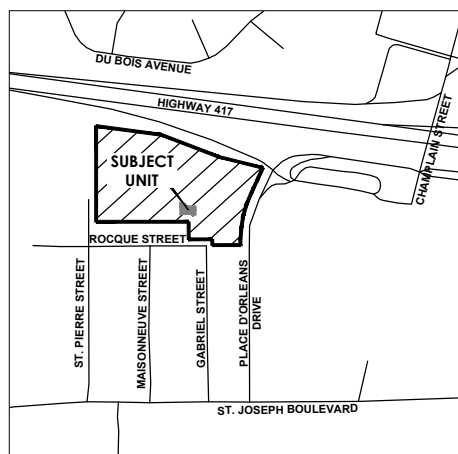
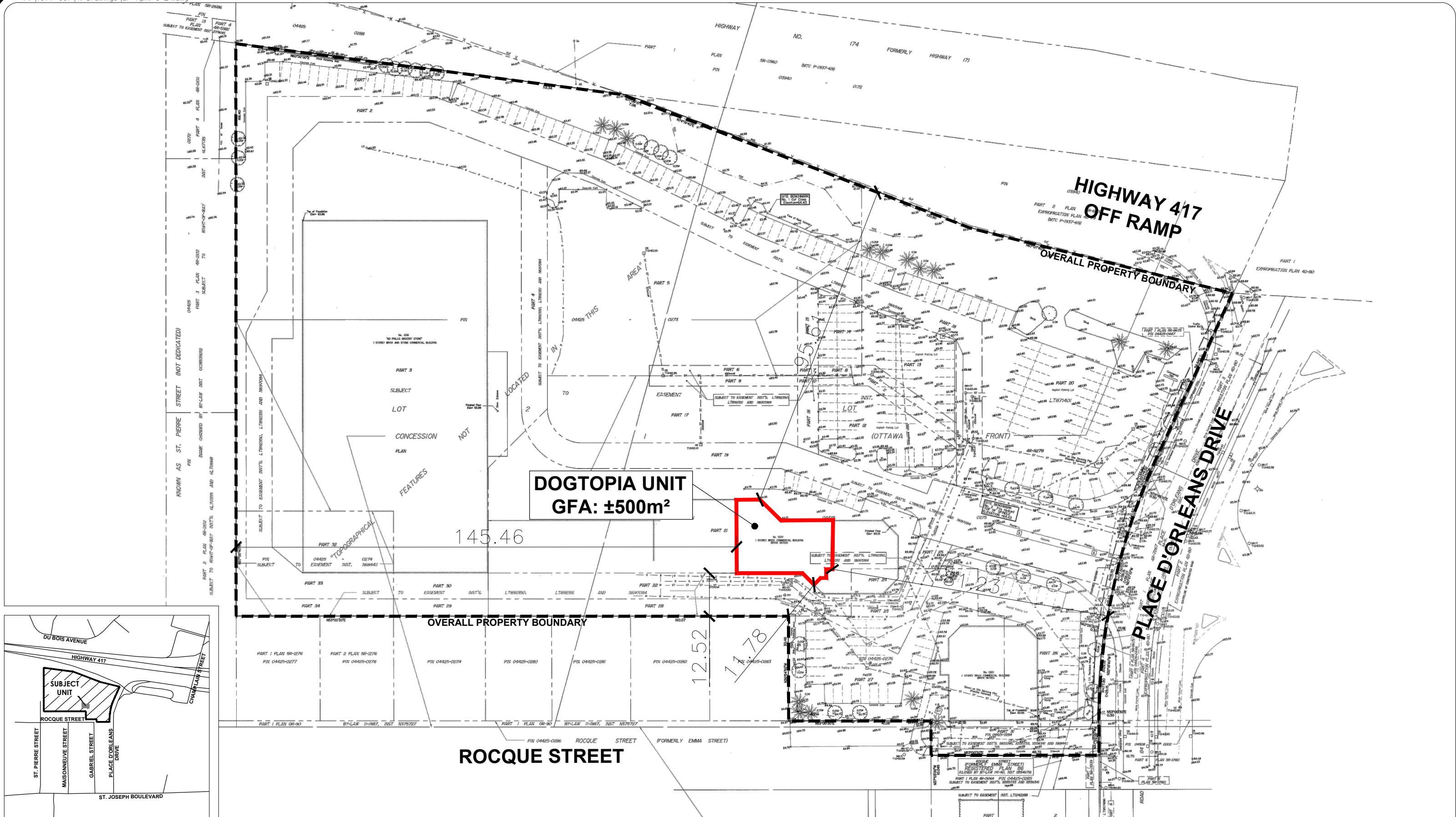
<ul style="list-style-type: none"> Survey Monument Planted Survey Monument Found Standard Iron Bar Short Standard Iron Bar Iron Bar Cut Cross Concrete Pin Round Iron Bar Witness Measured ANIS, O'Sullivan, Vollebek Ltd. Plan 4R-6278 Chain Link Fence Board Fence Diameter Location of Elevations Centreline Underground Marker 	<ul style="list-style-type: none"> Deciduous Tree Coniferous Tree Fire Hydrant Water Valve Maintenance Hole (Storm Sewer) Maintenance Hole (Sanitary) Maintenance Hole (Traffic) Maintenance Hole (Hydro) Valve Chamber (Watermain) Underground Storm Sewer Underground Sanitary Sewer Underground Water Underground Power Underground Gas Underground Bell Hydro Tower Base Outline 	<ul style="list-style-type: none"> Catch Basin Dish Inlet Gas Meter Handhole Bell Terminal Box Cable Terminal Box Traffic Terminal Box Underground Terminal Box Boiler Sign Traffic Signal Post Traffic Light Utility Pole Anchor Light Standard Top of Slope Bottom of Slope Stone Retaining Wall
------------------------------------------------------------------------------------------------------------------------------------------------------------------------------------------------------------------------------------------------------------------------------------------------------------------------------------------------------------------------------------------------------------------------------------------------------------------------------------------------------------	--------------------------------------------------------------------------------------------------------------------------------------------------------------------------------------------------------------------------------------------------------------------------------------------------------------------------------------------------------------------------------------------------------------------------------------------------------------------------------------------------------------------------------------------	----------------------------------------------------------------------------------------------------------------------------------------------------------------------------------------------------------------------------------------------------------------------------------------------------------------------------------------------------------------------------------------------------------------------------------------------------------------------------

ELEVATION NOTES
 1. Elevations shown are geoidic and are referred to the CGVD2011 geoidic datum.
 2. It is the responsibility of the user of this information to verify that the job benchmark has not been altered or disturbed and that its relative elevation and description agrees with the information shown on this drawing.

UTILITY NOTES
 1. The drawing cannot be accepted as acknowledging all of the utilities and it will be the responsibility of the user to contact the respective utility authorities for confirmation.
 2. Only visible surface utilities were located.
 3. A field location of underground plant by the pertinent utility authority is mandatory before any work involving breaking ground, probing, ascending etc.
 4. Underground utilities were marked on ground by Deepview located and/or taken from site surveying plan by A.J. Robinson & Associates Inc, drawing S2005-61, revised January 16, 1993.

Oct. 21, 2017
 Date
 E. H. Herveyer
 Ontario Land Surveyor

BOUNDARY INFORMATION COMPILED FROM PLAN 4R-6278
 Distances shown on this plan are ground distances and can be converted to grid distances by multiplying by the combined scale factor of 0.999822.
 For bearing comparisons, a rotation of 0°41'00" counter-clockwise was applied to bearings on plan 4R-6278.
 Bearings are grid bearings and are referred to the Central Meridian of N.T.M. Zone 17 (76° West Longitude) (NAD83) (English).
 © Annis, O'Sullivan, Vollebek Ltd. 2018. THIS PLAN IS PROTECTED BY COPYRIGHT.
 14 Gloucester Drive, Suite 300
 Ottawa, Ont. K2E 7S6
 Phone: (613) 727-0880 / Fax: (613) 727-1079
 Email: info@annis-osv.com
 P. No. K-990-17-Data Processing Plan 3 of 3 - T. 12. 1



DOGTOPIA UNIT
GFA: ±500m²

145.46

12.52

17.78

LEGEND

- SUBJECT LANDS
- OVERALL PROPERTY BOUNDARY

**DOGTOPIA
LOCATION PLAN**
1124 PLACE D'ORLEANS DRIVE
CITY OF OTTAWA



SCALE 1:1,000
APRIL 8, 2024



