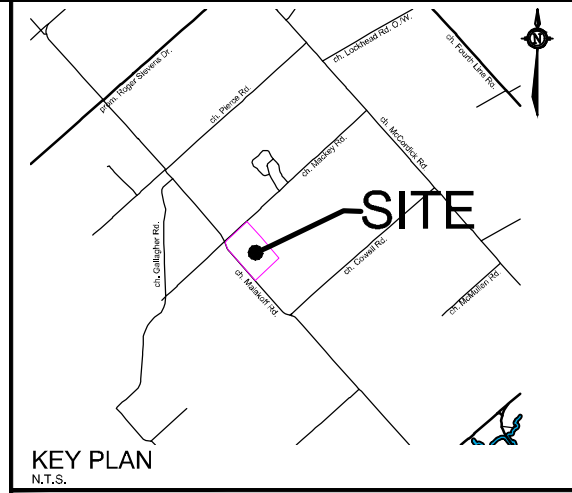
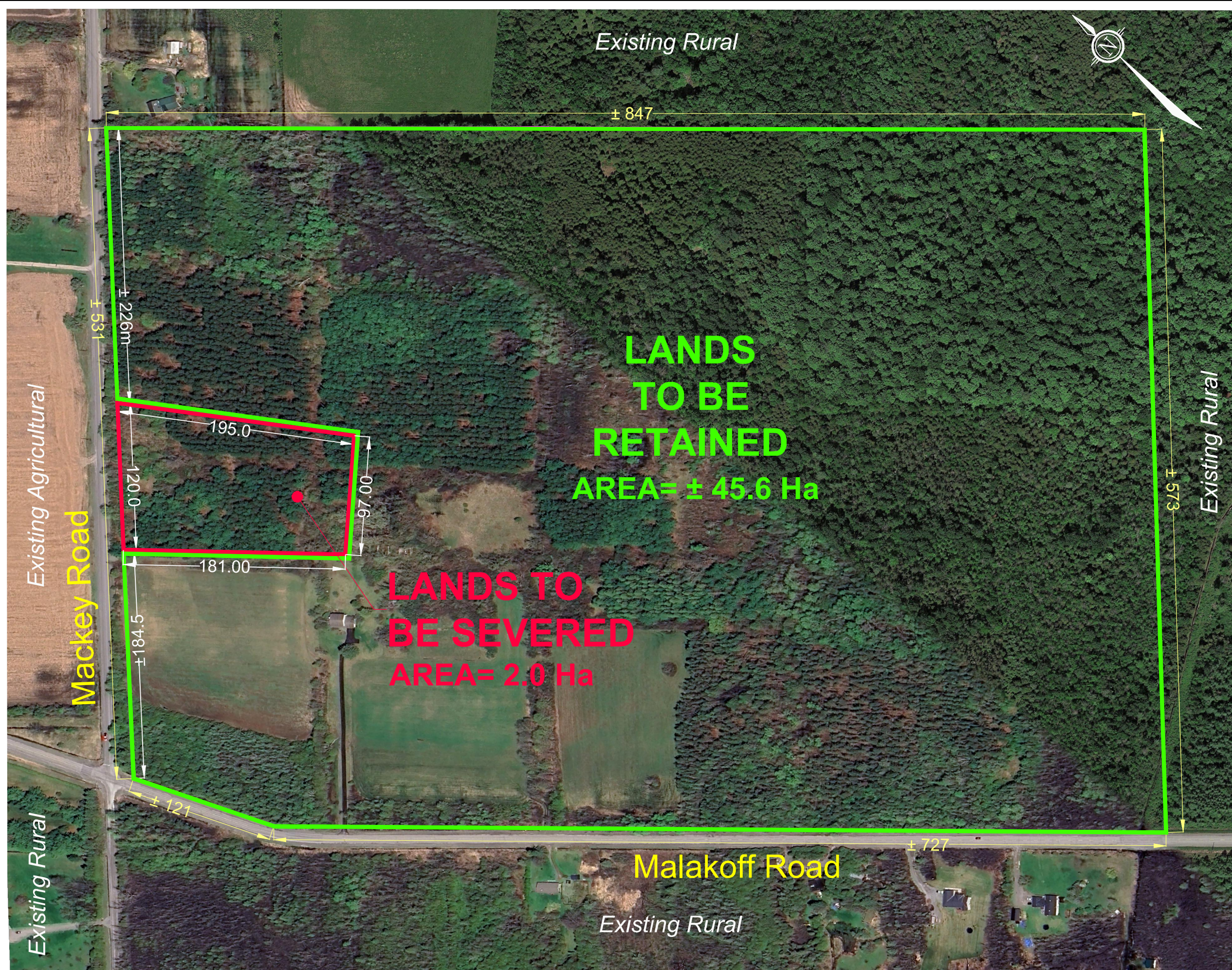


M:\2024\124040\CAD\Planning\Figures\124040-SEV.dwg, SEV1, Nov 29, 2024 - 12:13pm, wsboss



**CONSENT APPLICATION #1**  
 7063 MALAKOFF ROAD

PART OF LOT 6  
 CONCESSION 3  
 Geographic Township of Rideau  
 CITY OF OTTAWA

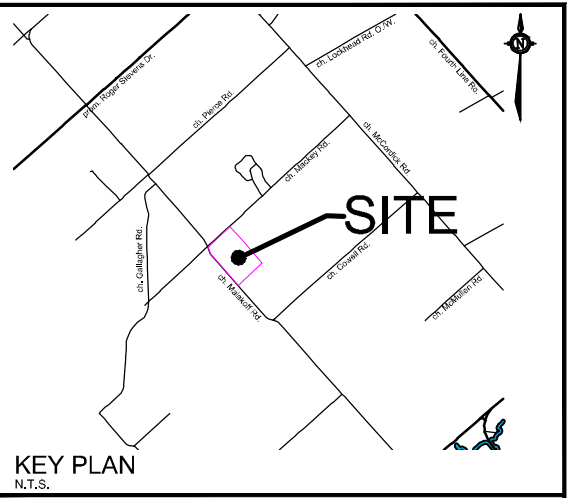
Committee of Adjustment  
 Received | Reçu le  
 2024-12-10  
 City of Ottawa | Ville d'Ottawa  
 Comité de dérogation

1 : 3000

No.	REVISION	DATE	BY
2.	REVISED PER CLIENT COMMENTS	NOV 26/24	LL-D
1.	PREPARED FOR CONSENT APPLICATION	NOV 08/24	SP

 <small>Engineers, Planners &amp; Landscape Architects          Suite 200, 240 Michael Cowpland Drive          Ottawa, Ontario, Canada K2M 1P6          Telephone: (613) 254-9643          Facsimile: (613) 254-5857          Website: www.nowatech-eng.com</small>	ISSUED
	NOVEMBER, 2024
	PROJECT No. 124040
DRAWING No. 124040-SEV-CP	

M:\2024\124040\CAD\Planning\Figures\124040-SEV.dwg, SEV2, Nov 29, 2024 - 12:13pm, wsboss

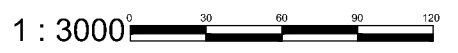


# CONSENT APPLICATION #2

7063 MALAKOFF ROAD

PART OF LOT 6  
CONCESSION 3  
Geographic Township of Rideau  
CITY OF OTTAWA

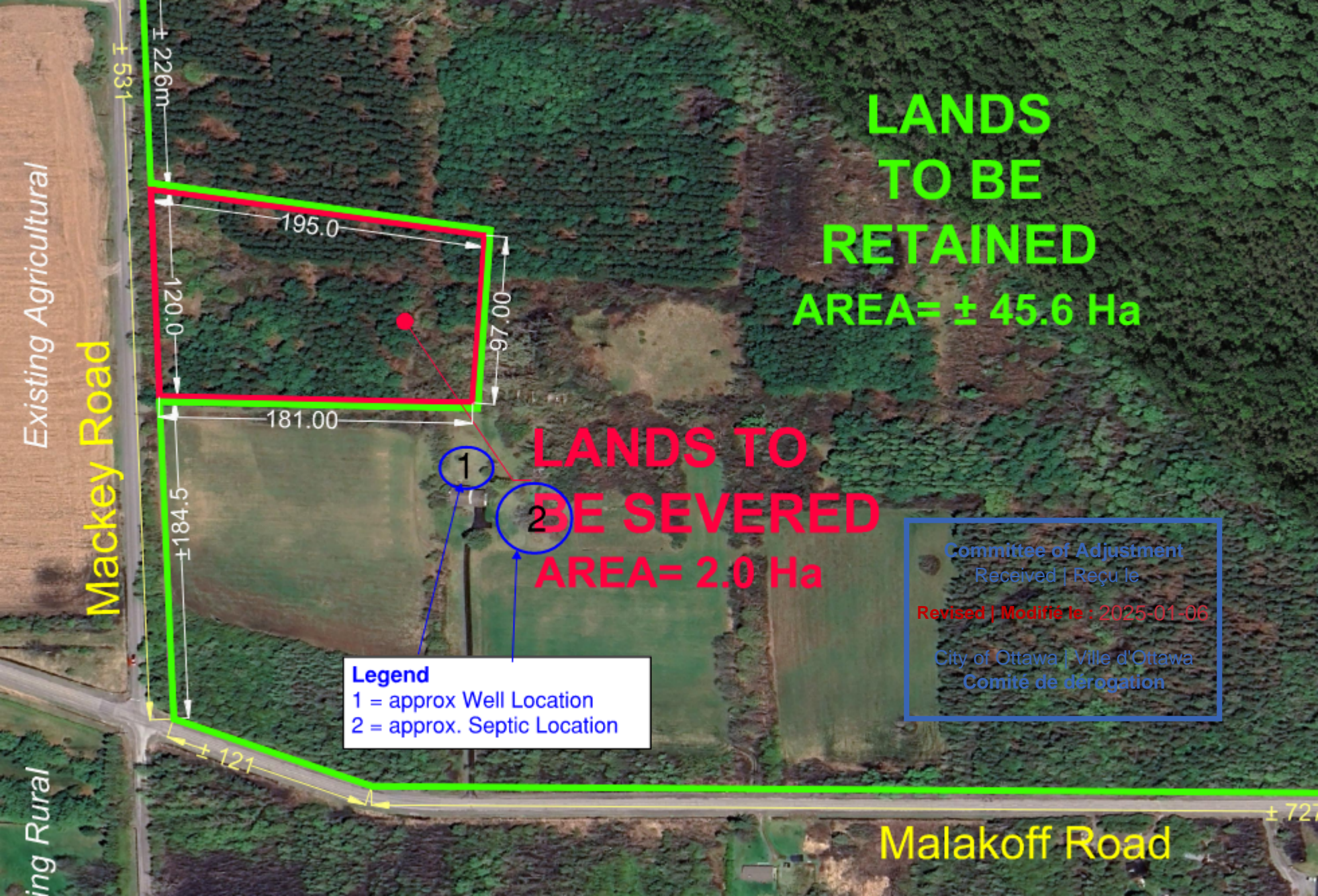
Committee of Adjustment  
Received | Reçu le  
2024-12-10  
City of Ottawa | Ville d'Ottawa  
Comité de dérogation



No.	REVISION	DATE	BY
2.	REVISED PER CLIENT COMMENTS	NOV 26/24	LL-D
1.	PREPARED FOR CONSENT APPLICATION	NOV 08/24	SP

**NOVATECH**  
Engineers, Planners & Landscape Architects  
Suite 200, 240 Michael Cowpland Drive  
Ottawa, Ontario, Canada K2M 1P6  
Telephone (613) 254-9643  
Facsimile (613) 254-5857  
Website www.novatech-eng.com

ISSUED  
NOVEMBER, 2024  
PROJECT No.  
124040  
DRAWING No.  
124040-SEV-CP



**LANDS  
TO BE  
RETAINED  
AREA= ± 45.6 Ha**

**LANDS TO  
BE SEVERED  
AREA= 2.0 Ha**

**Legend**  
1 = approx Well Location  
2 = approx. Septic Location

Committee of Adjustment  
Received | Reçu le  
Revised | Modifié le : 2025-01-06  
City of Ottawa | Ville d'Ottawa  
Comité de dérogation

Existing Agricultural

**Mackey Road**

Existing Rural

**Malakoff Road**

± 531

± 226m

195.0

120.0

00.76

181.00

± 184.5

± 121

± 72