

I REQUIRE THIS PLAN TO BE DEPOSITED UNDER THE LAND TITLES ACT.
DATE: _____

PLAN 4R-
RECEIVED AND DEPOSITED
DATE: _____

T. HARTWICK
ONTARIO LAND SURVEYOR

REPRESENTATIVE FOR
LAND REGISTRAR FOR THE
LAND TITLES DIVISION OF
OTTAWA-CARLETON NO. 4.

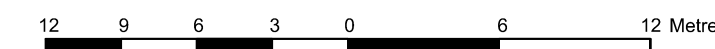
SCHEDULE

PARTS	LOT	CONCESSION	PIN
1-6	PART OF 12	2	ALL OF 04732-0105

PLAN OF SURVEY OF

**PART OF LOT 12
CONCESSION 2 (Rideau Front)**
Geographic Township of Nepean
CITY OF OTTAWA
Surveyed by Annis, O'Sullivan, Vollebek Ltd.

Scale 1 : 300



Metric
DISTANCES AND COORDINATES SHOWN ON THIS PLAN
ARE IN METRES AND CAN BE CONVERTED TO FEET BY
DIVIDING BY 0.3048.

Surveyor's Certificate

- I CERTIFY THAT :
1. This survey and plan are correct and in accordance with the Surveys Act, the Surveyors Act and the Land Titles Act and the regulations made under them.
 2. The survey was completed on the ___ day of _____, 2022.

Date

T. Hartwick
Ontario Land Surveyor

Notes & Legend

- Denotes Survey Monument Planted
- Survey Monument Found
- SIB Standard Iron Bar
- SSIB Short Standard Iron Bar
- IB Iron Bar
- IBØ Round Iron Bar
- (WIT) Witness
- (AOG) Annis, O'Sullivan, Vollebek Ltd.
- Meas. Measured
- (P) Registered Plan M-165
- (P1) (1287) Plan dated September 25, 2001
- (P2) Plan 5R-4818
- (P3) Plan 4R-29828
- (P4) Plan 4R-29828
- RWS Stone Retaining Wall
- CLF Chain Link Fence
- BF Board Fence
- PWF Post and Wire Fence
- C/L Centreline

Distances shown on this plan are ground distances and can be converted to grid distances by multiplying by the combined scale factor of 0.999947.

Bearings are grid, derived from Can-Net 2016 Real Time Network GPS observations on reference points A and B, shown hereon, having a bearing of N13°51'20"W and are referenced to Specified Control Points 01919791338 and 01919871649, MTM Zone 9 (76°30' West Longitude) NAD-83 (original).

For bearing comparisons, a rotation of 0°35'30" counter-clockwise was applied to bearings on Plans (P) and (P1).

Coordinates are derived from Can-Net 2016 Real Time Network GPS observations referenced to Specified Control Points 01919791338 and 01919871649, MTM Zone 9 (76°30' West Longitude) NAD-83 (original).

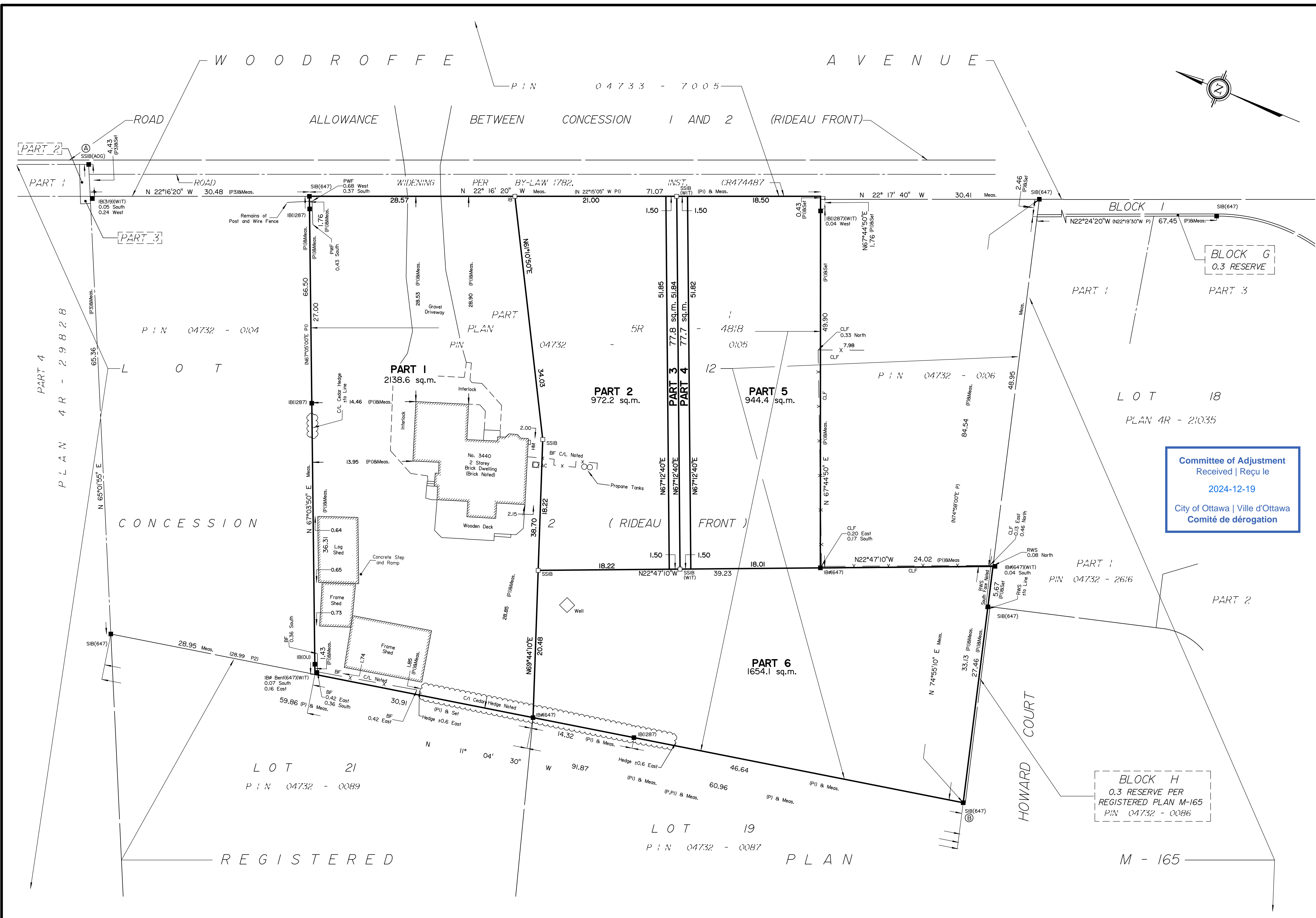
Coordinate values are to urban accuracy in accordance with O. Reg. 216/10.

.01919791338	Northing	5006055.96	Easting	346140.91
.01919871649	Northing	5007189.87	Easting	372435.05
.Point A	Northing	5014610.41	Easting	366415.48
.Point B	Northing	5014464.29	Easting	366379.42

Caution: Coordinates cannot, in themselves, be used to re-establish corners or boundaries shown on this plan.

ANNIS, O'SULLIVAN, VOLLEBEK LTD.
14 Concourse Gate, Suite 500
Nepean, Ont. K2E 7S6
Phone: (613) 727-0850 / Fax: (613) 727-1079
Email: Nepean@aosvlt.com

Ontario
Land Surveyors Job No. 20736-21 Sheppard PI L112 Con2 RF R DI MF



Committee of Adjustment
Received | Reçu le
2024-12-19
City of Ottawa / Ville d'Ottawa
Comité de dérogation

1:\2021\07\26-21_Sheppard PI L112 Con2 RF R DI.dwg, 2022-10-26 9:00:45 AM