

PART OF LOT 39 REGISTERED PLAN 30 CITY OF OTTAWA

Surveyed by Annis, O'Sullivan, Vollebek Ltd.

Scale 1 : 125



Metric DISTANCES AND COORDINATES SHOWN ON THIS PLAN ARE IN METRES AND CAN BE CONVERTED TO FEET BY DIVIDING BY 0.3048.

Surveyor's Certificate

- I CERTIFY THAT: 1. This survey and plan are correct and in accordance with the Surveys Act and the Surveyors Act and the regulations made under them. 2. The survey was completed on the 4th day of December, 2023.

DEC. 13, 2023

Date

Mirel Aradau Ontario Land Surveyor

Notes & Legend

Table with 2 columns: Denotes and Description. Includes symbols for Survey Monument Planted, Survey Monument Found, Short Standard Iron Bar, Iron Bar, Cut Cross, Concrete Pin, Round Iron Bar, Witness, Measured, Foundation, Annis, O'Sullivan, Vollebek Ltd., Registered Plan 30, Plan 4R-30159, (AOG) Plan dated October 16, 1990, (1175) Plan dated February 3, 1987, (1175) Field Note dated June 9, 2014, Instrument NS112802, Maintenance Hole (Sanitary), Maintenance Hole (Bell), Fire Hydrant, Overhead Wires, Utility Pole, Catch Basin, Top of Grate, Gas Meter, Water Stand Post, Bollard, Sign, Metal Pole, Board Fence, Timber Retaining Wall, Stone Retaining Wall, Irregular Stone Retaining Wall, Concrete Sidewalk, Diameter, Location of Elevations, Top of Concrete Curb and Retaining Wall Elevation, Centreline, Property Line, Deciduous Tree.

Bearings are grid, derived from Can-Net 2016 Real Time Network GPS observations, MTM Zone 9 (76°30' West Longitude) NAD-83 (original).

ELEVATION NOTES

- 1. Elevations shown are geodetic and are referred to the CGVD28 geodetic datum. 2. It is the responsibility of the user of this information to verify that the job benchmark has not been altered or disturbed and that its relative elevation and description agrees with the information shown on this drawing.

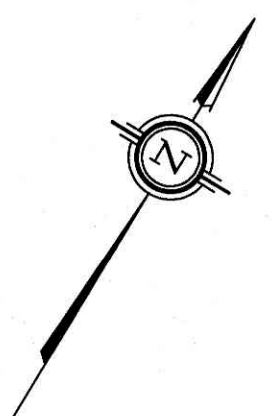
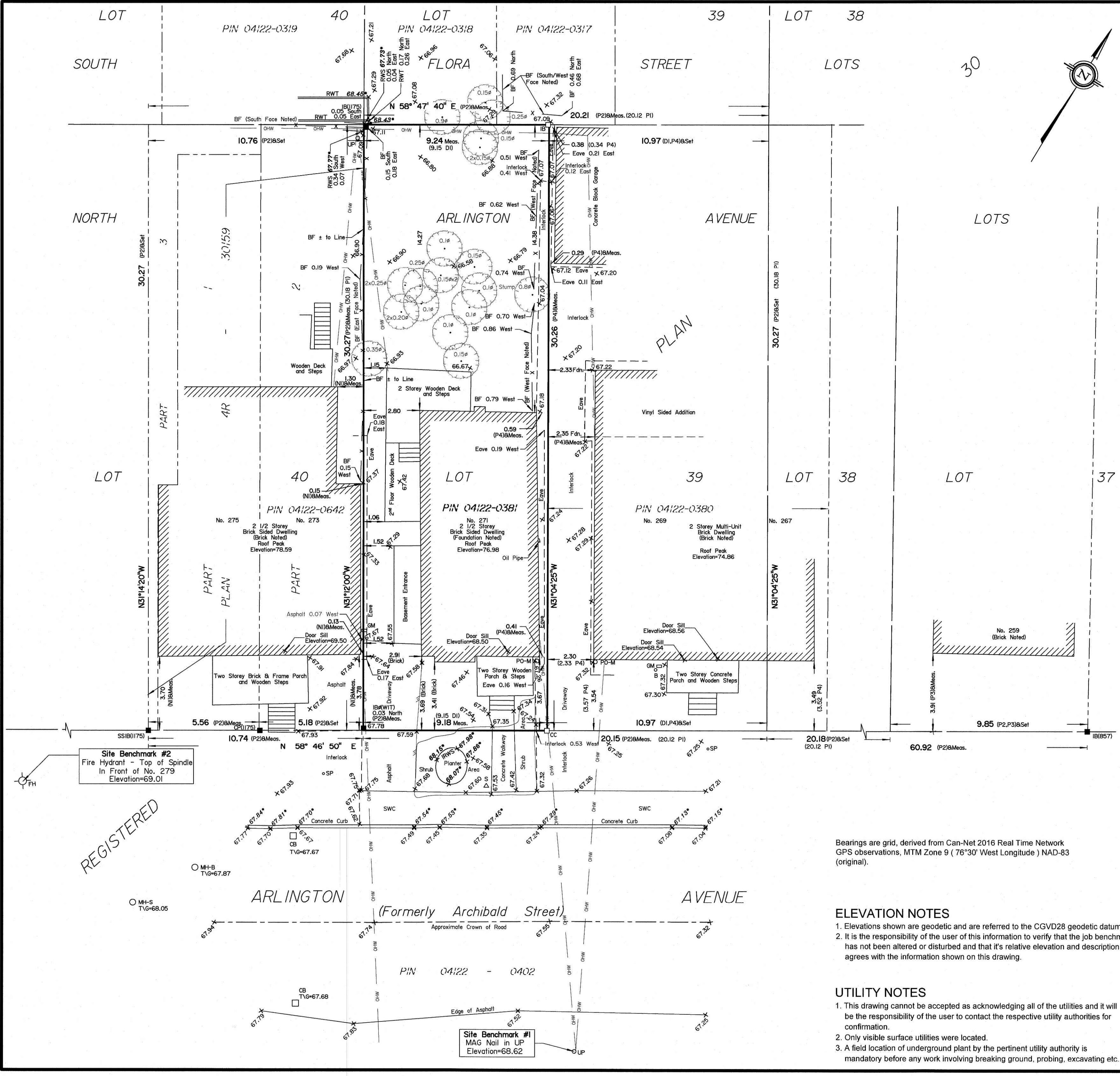
UTILITY NOTES

- 1. This drawing cannot be accepted as acknowledging all of the utilities and it will be the responsibility of the user to contact the respective utility authorities for confirmation. 2. Only visible surface utilities were located. 3. A field location of underground plant by the pertinent utility authority is mandatory before any work involving breaking ground, probing, excavating etc.

Committee of Adjustment Received | Reçu le 2025-02-20 City of Ottawa | Ville d'Ottawa Comité de dérogation

ASSOCIATION OF ONTARIO LAND SURVEYORS PLAN SUBMISSION FORM V-60655

ANNIS, O'SULLIVAN, VOLLEBEK LTD. 14 Concourse Gate, Suite 500 Nepean, Ont. K2E 7S6 Phone: (613) 727-0850 / Fax: (613) 727-1079 Email: Nepean@aovltd.com



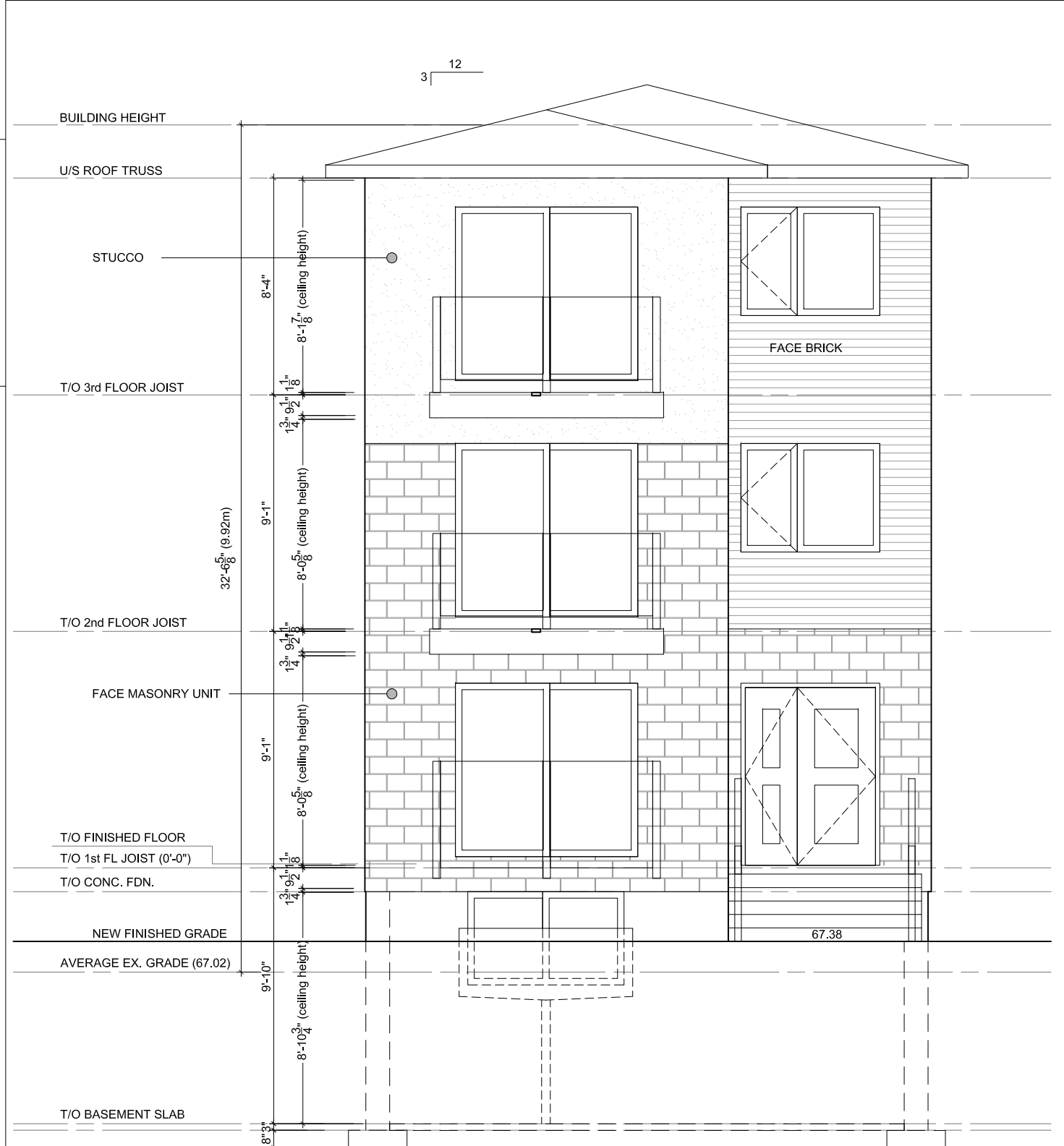
REGISTERED

Plot Stamp For BPEI Use Only

Plot By:

Plot Date:

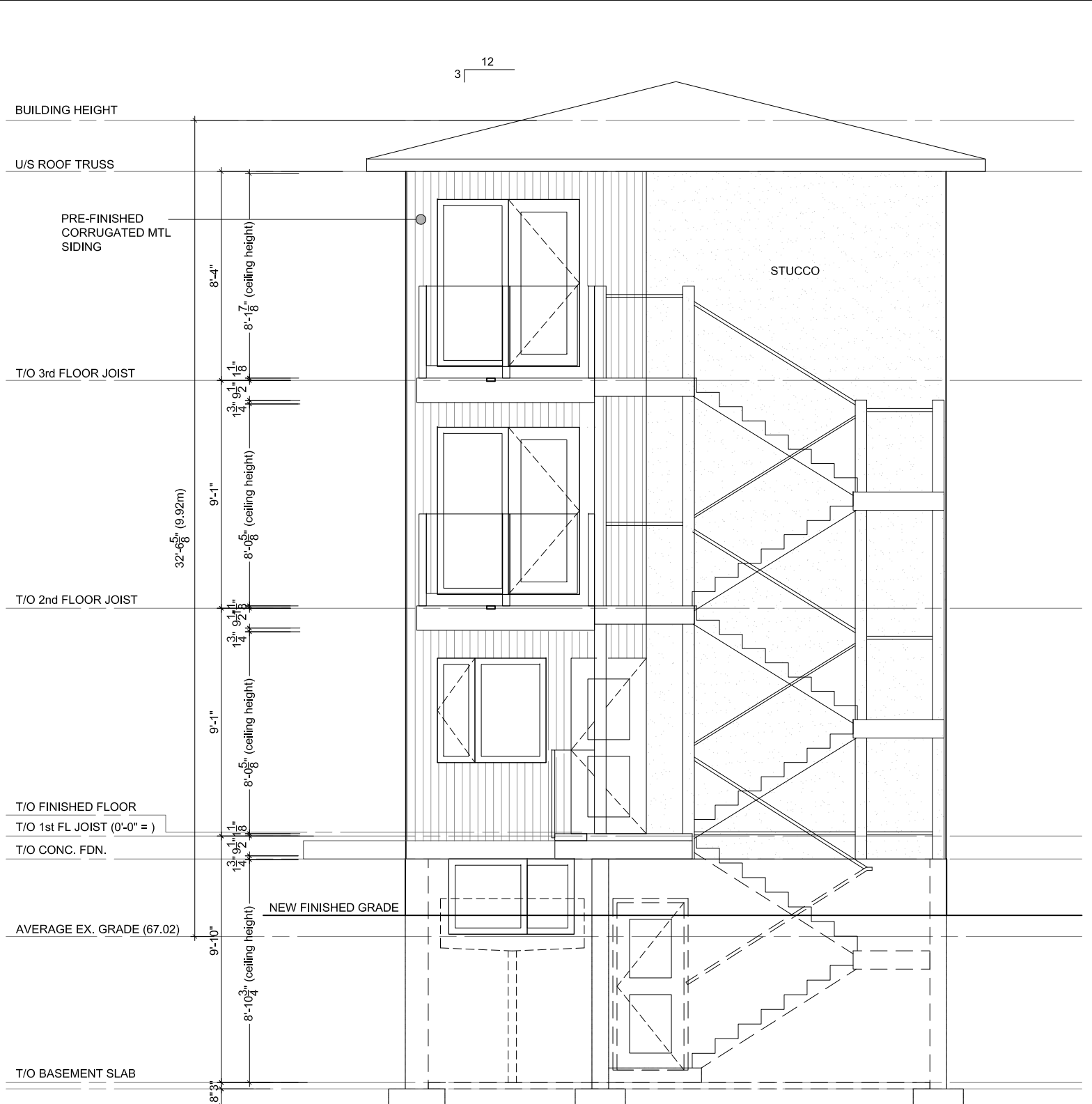
Plotter:



1 FRONT BUILDING ELEVATION

MV3.0 SCALE: 3/16" = 1'-0"

Committee of Adjustment
Received | Reçu le
2025-02-20
City of Ottawa | Ville d'Ottawa
Comité de dérogation

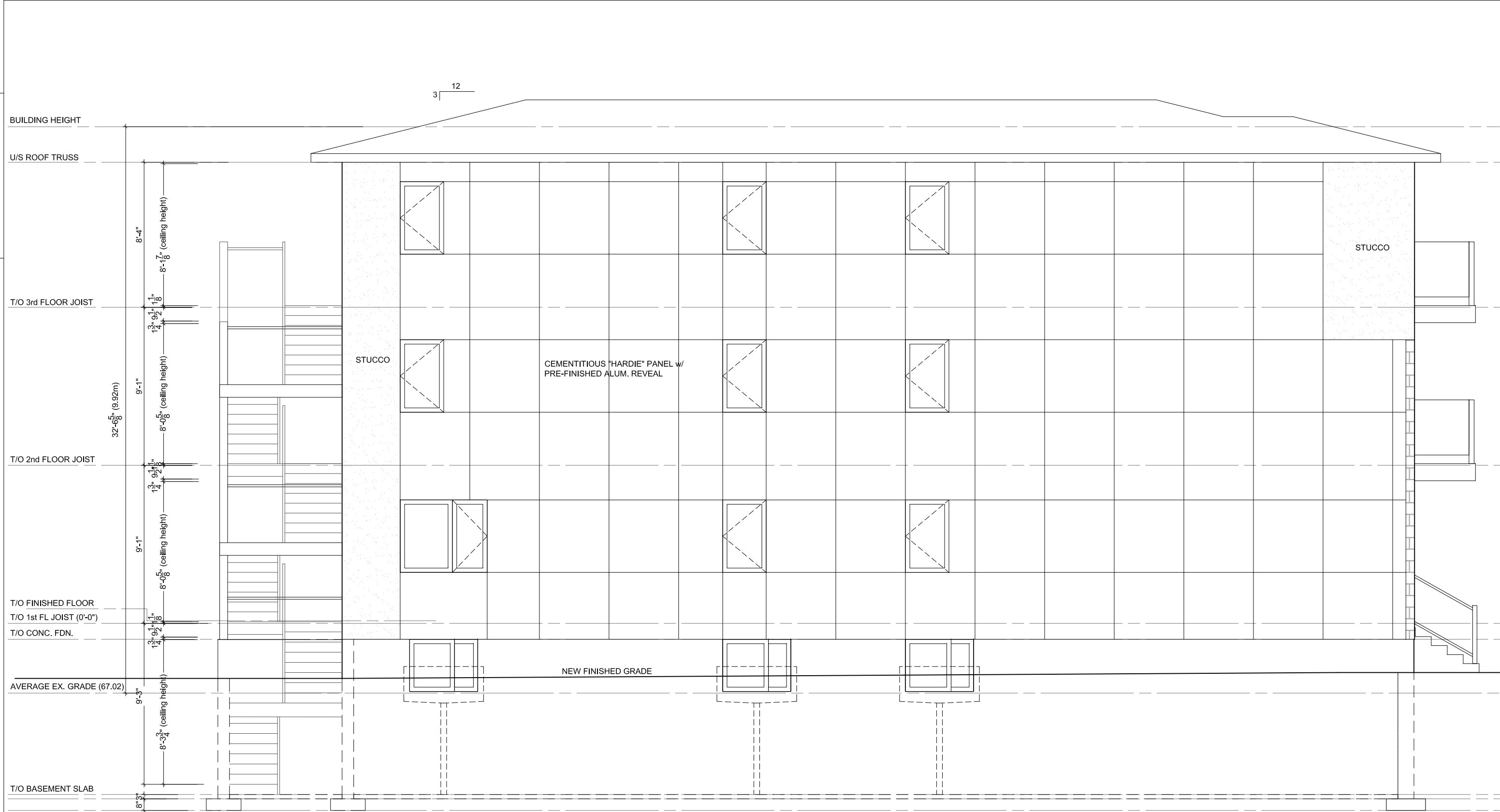


2 REAR BUILDING ELEVATION

MV3.0 SCALE: 3/16" = 1'-0"

BING PROFESSIONAL ENGINEERING INC. Unit 5, 6 Antares Dr., Nepean, ON K2E 8A9 Phone: (613) 608 - 1324 E-mail: welcome@bingpro.ca	JOB NEW LOW RISE APARTMENT, 8 UNITS 271 Arlington Ave, Ottawa, ON K1R 5T1	DATE: 2024-09-27 REV DATE: SCALE: AS NOTED REFER:	DRAWN: CHS REV. No: PART OF: PROJ. No: O-24-GEN-29	DRAWING No. MV3.0 FILE.DWG
	DRAWING FRONT AND REAR BUILDING ELEVATIONS			

Plotter: Page Setup: Plot Date: Plot Time: Plot By: PLLOT STAMP FOR BPEI USE ONLY



1
MV3.1

LEFT BUILDING ELEVATION

SCALE: 1/4" = 1'-0"

BING PROFESSIONAL ENGINEERING INC.

Unit 5, 6 Antares Dr., Nepean, ON K2E 8A9
Phone: (613) 608 - 1324 E-mail: welcome@bingpro.ca

JOB NEW LOW RISE APARTMENT, 8 UNITS

271 Arlington Ave, Ottawa, ON K1R 5T1

DRAWING LEFT BUILDING ELEVATION

DATE: 2024-09-27

REV. No:

SCALE: AS NOTED

REFER:

DRAWN: CHS

REV. No:

PART OF:

PROJ. No: O-24-GEN-29

DRAWING No.

MV3.1

FILE.DWG

PLLOT STAMP FOR BPEI USE ONLY

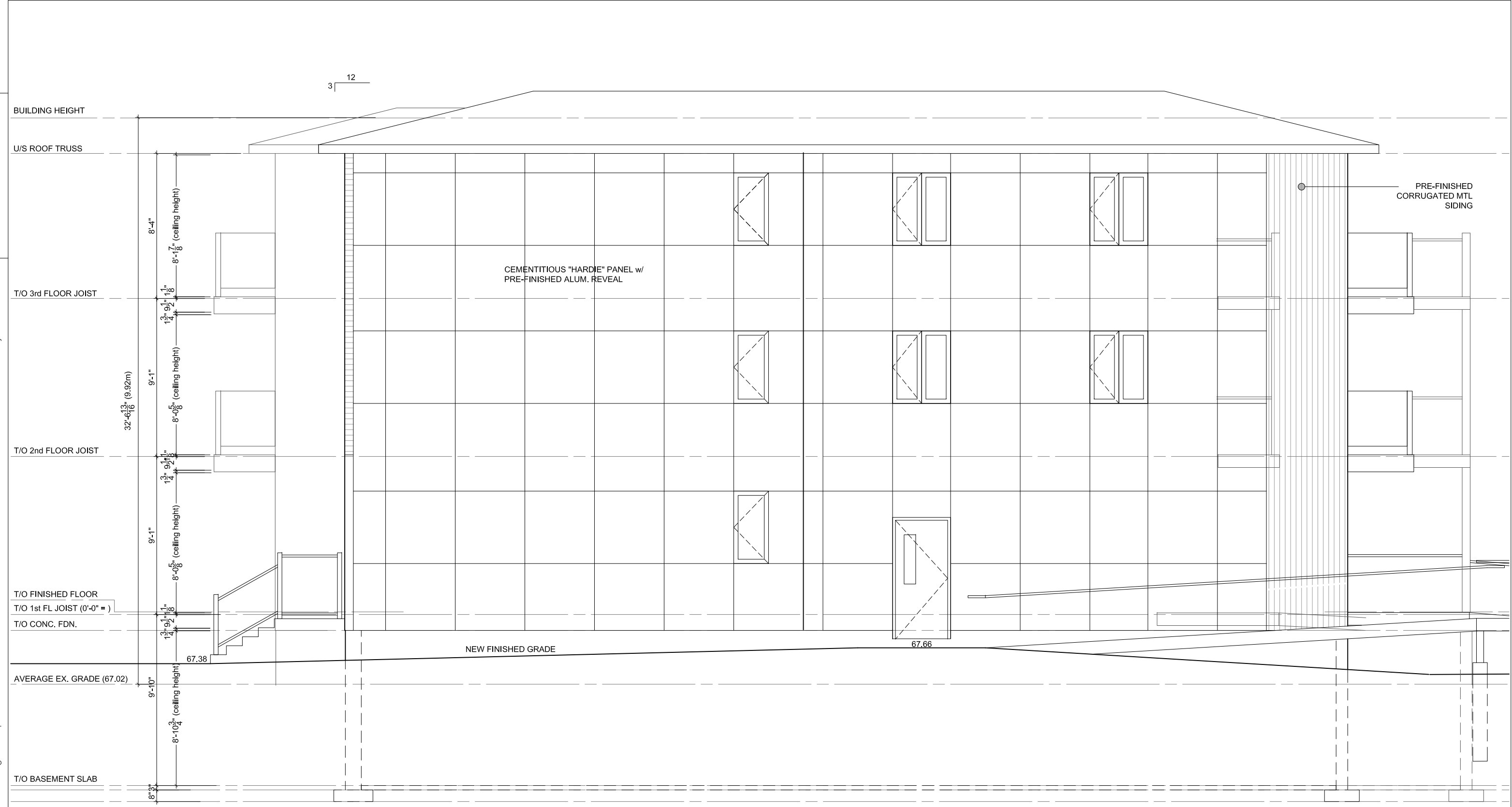
Plot By:

Plot Time:

Plot Date:

Page Setup:

Plotter:



1
MV3.2

RIGHT BUILDING ELEVATION

SCALE: 3/16" = 1'-0"

BING PROFESSIONAL ENGINEERING INC.

Unit 5, 6 Antares Dr., Nepean, ON K2E 8A9
Phone: (613) 608 - 1324 E-mail: welcome@bingpro.ca

JOB NEW LOW RISE APARTMENT, 8 UNITS

271 Arlington Ave, Ottawa, ON K1R 5T1

DRAWING RIGHT BUILDING ELEVATION

DATE: 2024-09-27

REV. No:

SCALE: AS NOTED

REFER:

DRAWN: CHS

REV. No:

PART OF:

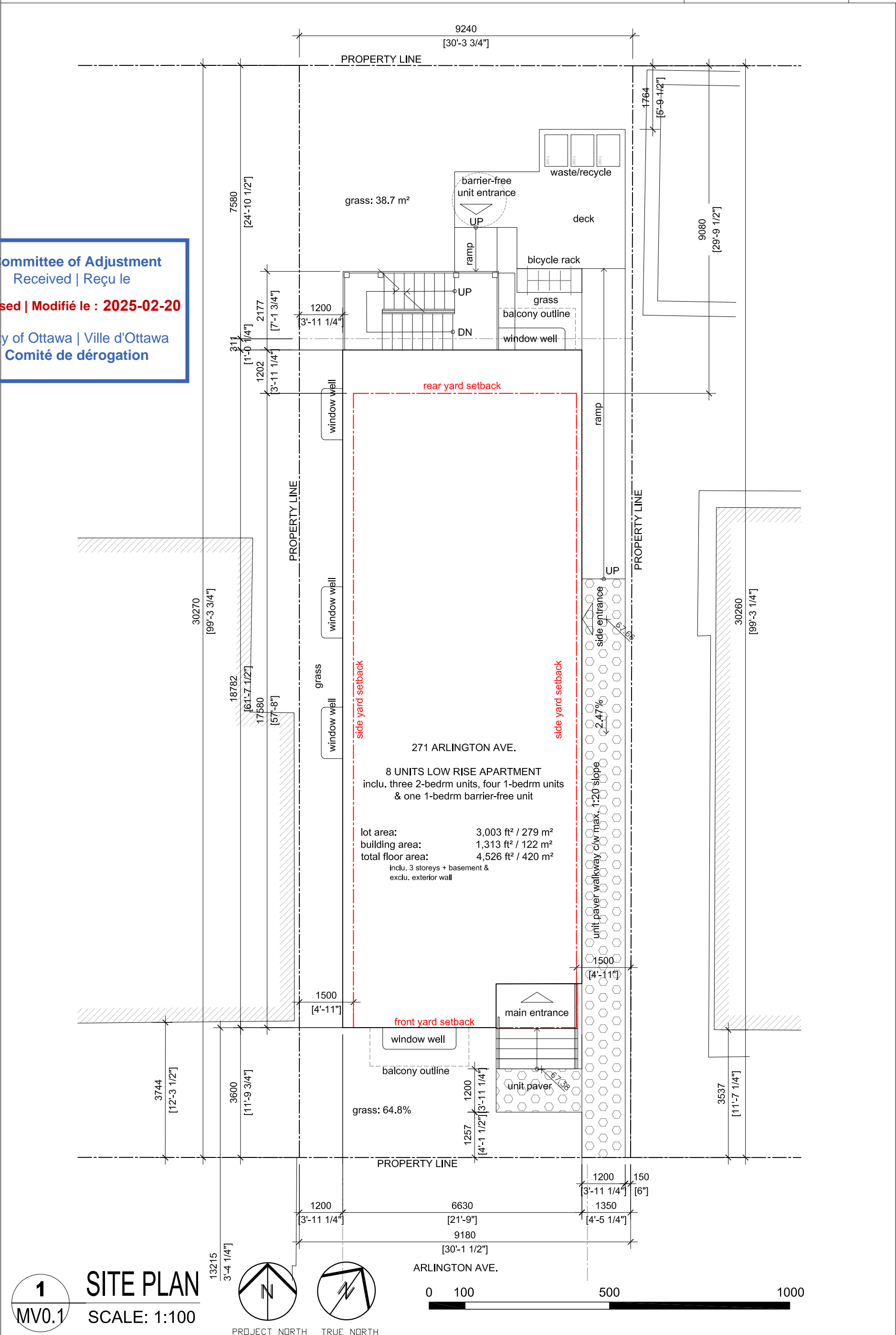
PROJ. No: O-24-GEN-29

DRAWING No.

MV3.2

FILE.DWG

Committee of Adjustment
Received | Reçu le
Revised | Modifié le : 2025-02-20
City of Ottawa | Ville d'Ottawa
Comité de dérogation



BING PROFESSIONAL ENGINEERING INC. Unit 5, 6 Antares Dr., Nepean, ON K2E 8A9 Phone: (613) 608 - 1324 E-mail: welcome@bingpro.ca	JOB NEW LOW RISE APARTMENT, 8 UNITS 271 Arlington Ave, Ottawa, ON K1R 5T1	DATE: 2025-02-18 REV: No: DATE: No: SCALE: 1:100 REFER: PROJ. No: O-24-GEN-29	DRAWN: CHS REV: No: PART OF: PROJ. No: O-24-GEN-29	DRAWING No. MV0.1 FILE.DWG	
	DRAWING SITE PLAN				