

Committee of Adjustment
 Received | Reçu le
 Revised | Modifié le : 2025-02-19
 City of Ottawa | Ville d'Ottawa
 Comité de dérogation

SCHEDULE			
PART	LOT	CONCESSION	PIN
1			
2			
3			
4			
5			
6			
7			
8			
9			
10			
11			
12			
13			
14			
15			
16			
17			
18			
19			
20			
21			

Parts 1 to 15, 17, 18, 20 & 21: Subject to easement, Inst. OC2572702 and OC2577421.
 Parts 17 and 18: Subject to easement, Inst. OC2572703.
 Parts 9, 10 & 21: Subject to easement, Inst. OC2572704.
 Parts 16 and 19: Subject to easement, Inst. N440754 and LT730132.
 Part 19: Subject to easement, Inst. NS3927.
 Part 20: Subject to easement, Inst. NS11419.

PLAN OF SURVEY OF
 PART OF LOTS 26 AND 27
 CONCESSION 2 (OTTAWA FRONT)
 Geographic Township of Gloucester
 CITY OF OTTAWA
 Surveyed by Annis, O'Sullivan, Vollebek Ltd.

Scale 1 : 250
 The intended plot size of the plan is 1219 mm in width by 610 mm in height when plotted at a scale of 1:250.
 Metric
 DISTANCES AND COORDINATES SHOWN ON THIS PLAN ARE IN METRES AND CAN BE CONVERTED TO FEET BY DIVIDING BY 0.3048.

Surveyor's Certificate
 I CERTIFY THAT:
 1. This survey and plan are correct and in accordance with the Surveys Act, the Surveyors Act and the Land Titles Act and the regulations made under them.
 2. The survey was completed on the ___ day of _____, 2024.

MMM DD YYYY Date E. H. Herweyer Ontario Land Surveyor

Notes & Legend
 -□- Denotes Survey Monument Planted
 -■- Survey Monument Found
 SIB - Standard Iron Bar
 SSB - Short Standard Iron Bar
 IB - Iron Bar
 (WIT) - Witness
 (AOG) - Annis, O'Sullivan, Vollebek Ltd.
 Meas - Measured
 (PI) - Plan

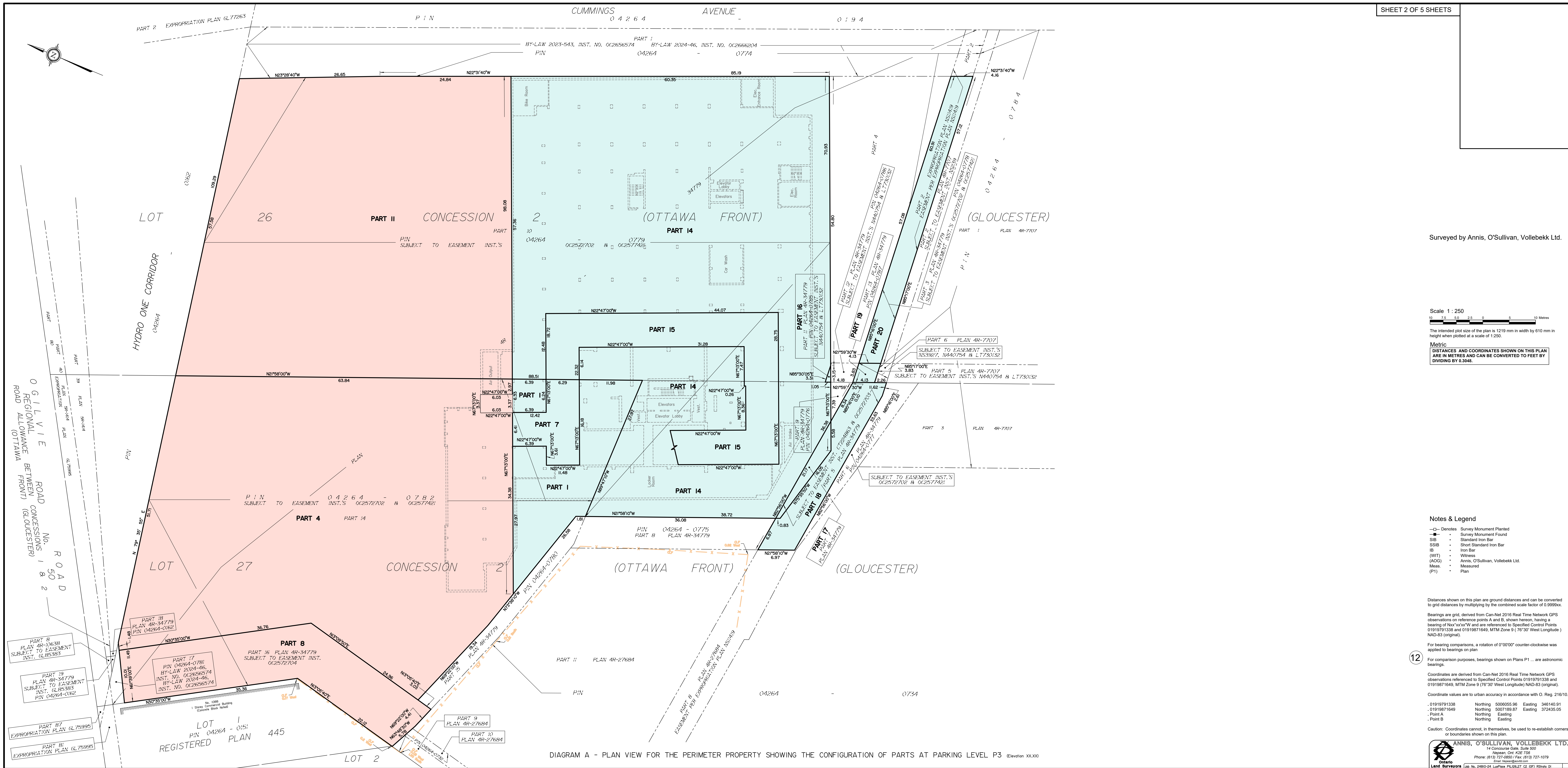
Distances shown on this plan are ground distances and can be converted to grid distances by multiplying by the combined scale factor of 0.99988.
 Bearings are grid, derived from Can-Net 2016 Real Time Network GPS observations on reference points A and B, shown hereon, having a bearing of Nxx°xxx'W and are referenced to Specified Control Points 01919791338 and 01919871649, MTM Zone 9 (76°30' West Longitude) NAD-83 (original).

For bearing comparisons, a rotation of 0°00'00" counter-clockwise was applied to bearings on plan.
 For comparison purposes, bearings shown on Plans P1... are astronomic bearings.

Coordinates are derived from Can-Net 2016 Real Time Network GPS observations referenced to Specified Control Points 01919791338 and 01919871649, MTM Zone 9 (76°30' West Longitude) NAD-83 (original).
 Coordinate values are to urban accuracy in accordance with O. Reg. 216/10.
 -01919791338 Northing 5006055.96 Easting 346140.91
 -01919871649 Northing 5007189.87 Easting 372435.05
 -Point A Northing Easting
 -Point B Northing Easting

Caution: Coordinates cannot, in themselves, be used to re-establish corners or boundaries shown on this plan.
 ANNIS, O'SULLIVAN, VOLLEBEK LTD.
 14 Concourse Gate, Suite 502
 Nepean, Ont. K2E 7S8
 Phone: (613) 727-8800 / Fax: (613) 727-1079
 Email: nvoan@annis.com
 Ontario Land Surveyors (Lic. No. 2480-24 License No. 05-27, C. 07) Reg. 01

DIAGRAM D - PLAN VIEW FOR THE PERIMETER PROPERTY SHOWING THE CONFIGURATION OF PARTS AT GRADE (Elevation XX.XX)



Surveyed by Annis, O'Sullivan, Vollebek Ltd.

Scale 1 : 250

The intended plot size of the plan is 1219 mm in width by 610 mm in height when plotted at a scale of 1:250.

Metric
DISTANCES AND COORDINATES SHOWN ON THIS PLAN ARE IN METRES AND CAN BE CONVERTED TO FEET BY DIVIDING BY 0.3048.

Notes & Legend

- Denotes Survey Monument Planted
- Denotes Survey Monument Found
- SIB - Standard Iron Bar
- SSIB - Short Standard Iron Bar
- IB - Iron Bar
- (WIT) - Witness
- (AOC) - Annis, O'Sullivan, Vollebek Ltd.
- Meas. - Measured
- (P1) - Plan

Distances shown on this plan are ground distances and can be converted to grid distances by multiplying by the combined scale factor of 0.9998x.

Bearings are grid, derived from Can-Net 2016 Real Time Network GPS observations on reference points A and B, shown hereon, having a bearing of Nxx°xx'W and are referenced to Specified Control Points 01919791338 and 01919871649, MTM Zone 9 (76°30' West Longitude) NAD-83 (original).

For bearing comparisons, a rotation of 0°00'00" counter-clockwise was applied to bearings on plan.

For comparison purposes, bearings shown on Plans P1 ... are astronomic bearings.

Coordinates are derived from Can-Net 2016 Real Time Network GPS observations referenced to Specified Control Points 01919791338 and 01919871649, MTM Zone 9 (76°30' West Longitude) NAD-83 (original).

Coordinate values are to urban accuracy in accordance with O. Reg. 216/10.

01919791338	Northing	5006055.96	Eastings	346140.91
01919871649	Northing	5007189.87	Eastings	372435.05
Point A	Northing	Eastings		
Point B	Northing	Eastings		

Caution: Coordinates cannot, in themselves, be used to re-establish corners or boundaries shown on this plan.

DIAGRAM A - PLAN VIEW FOR THE PERIMETER PROPERTY SHOWING THE CONFIGURATION OF PARTS AT PARKING LEVEL P3 (Elevation XX.00)

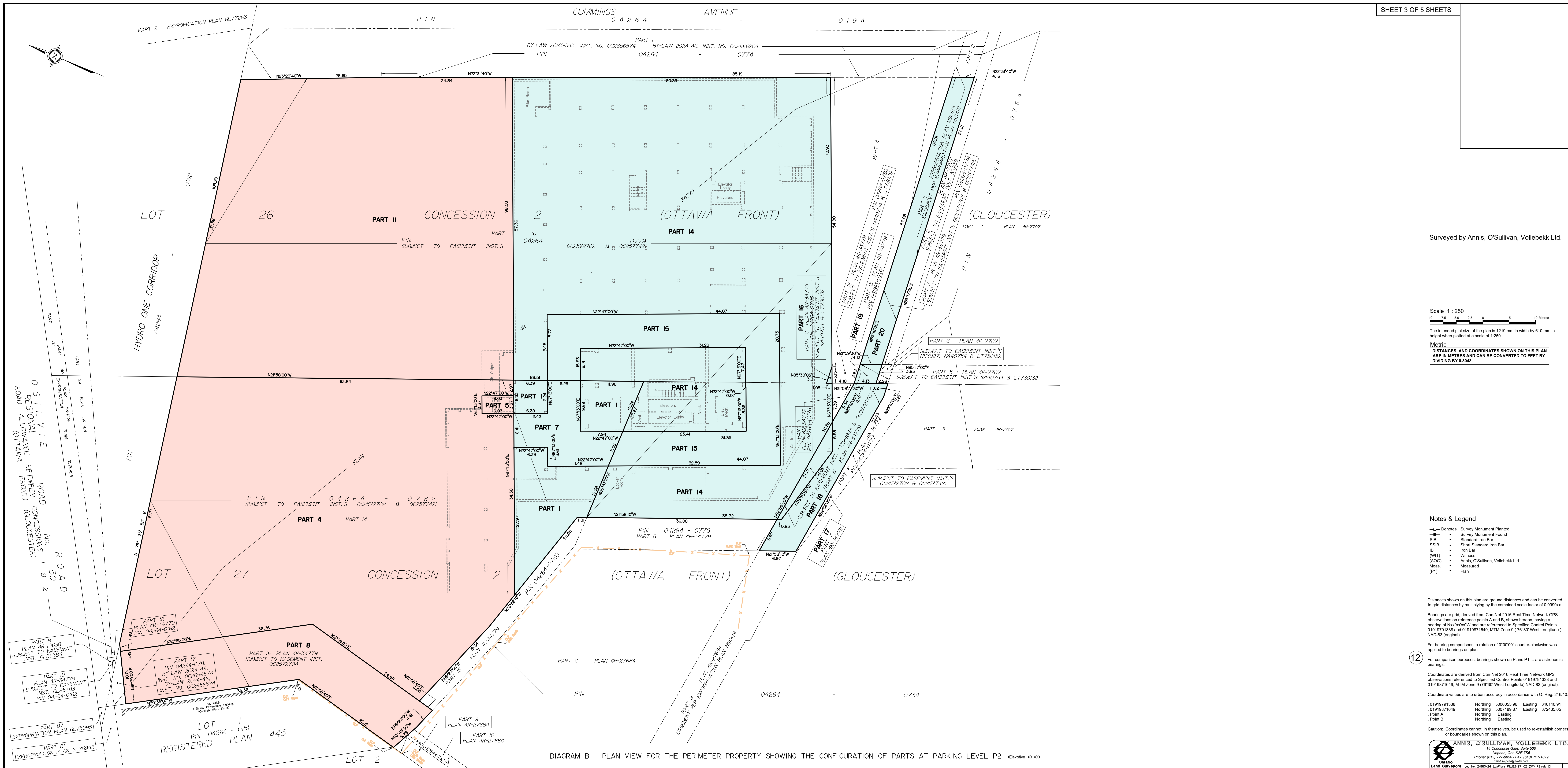


DIAGRAM B - PLAN VIEW FOR THE PERIMETER PROPERTY SHOWING THE CONFIGURATION OF PARTS AT PARKING LEVEL P2 (Elevation XX.XX)

Surveyed by Annis, O'Sullivan, Vollebek Ltd.

Scale 1 : 250

The intended plot size of the plan is 1219 mm in width by 610 mm in height when plotted at a scale of 1:250.

Metric
DISTANCES AND COORDINATES SHOWN ON THIS PLAN ARE IN METRES AND CAN BE CONVERTED TO FEET BY DIVIDING BY 0.3048.

Notes & Legend

- Denotes Survey Monument Planted
- Survey Monument Found
- SIB— Standard Iron Bar
- SSIB— Short Standard Iron Bar
- IB— Iron Bar
- (WIT)— Witness
- (AOC)— Annis, O'Sullivan, Vollebek Ltd.
- Meas.— Measured
- (P1)— Plan

Distances shown on this plan are ground distances and can be converted to grid distances by multiplying by the combined scale factor of 0.9998x.

Bearings are grid, derived from Can-Net 2016 Real Time Network GPS observations on reference points A and B, shown hereon, having a bearing of Nxx°xxx'W and are referenced to Specified Control Points 01919791338 and 01919871649, MTM Zone 9 (76°30' West Longitude) NAD-83 (original).

For bearing comparisons, a rotation of 0°00'00" counter-clockwise was applied to bearings on plan.

For comparison purposes, bearings shown on Plans P1 ... are astronomic bearings.

Coordinates are derived from Can-Net 2016 Real Time Network GPS observations referenced to Specified Control Points 01919791338 and 01919871649, MTM Zone 9 (76°30' West Longitude) NAD-83 (original).

Coordinate values are to urban accuracy in accordance with O. Reg. 216/10.

01919791338	Northing	500655.96	Eastings	346140.91
01919871649	Northing	5007189.87	Eastings	372435.05
Point A	Northing	Eastings		
Point B	Northing	Eastings		

Caution: Coordinates cannot, in themselves, be used to re-establish corners or boundaries shown on this plan.

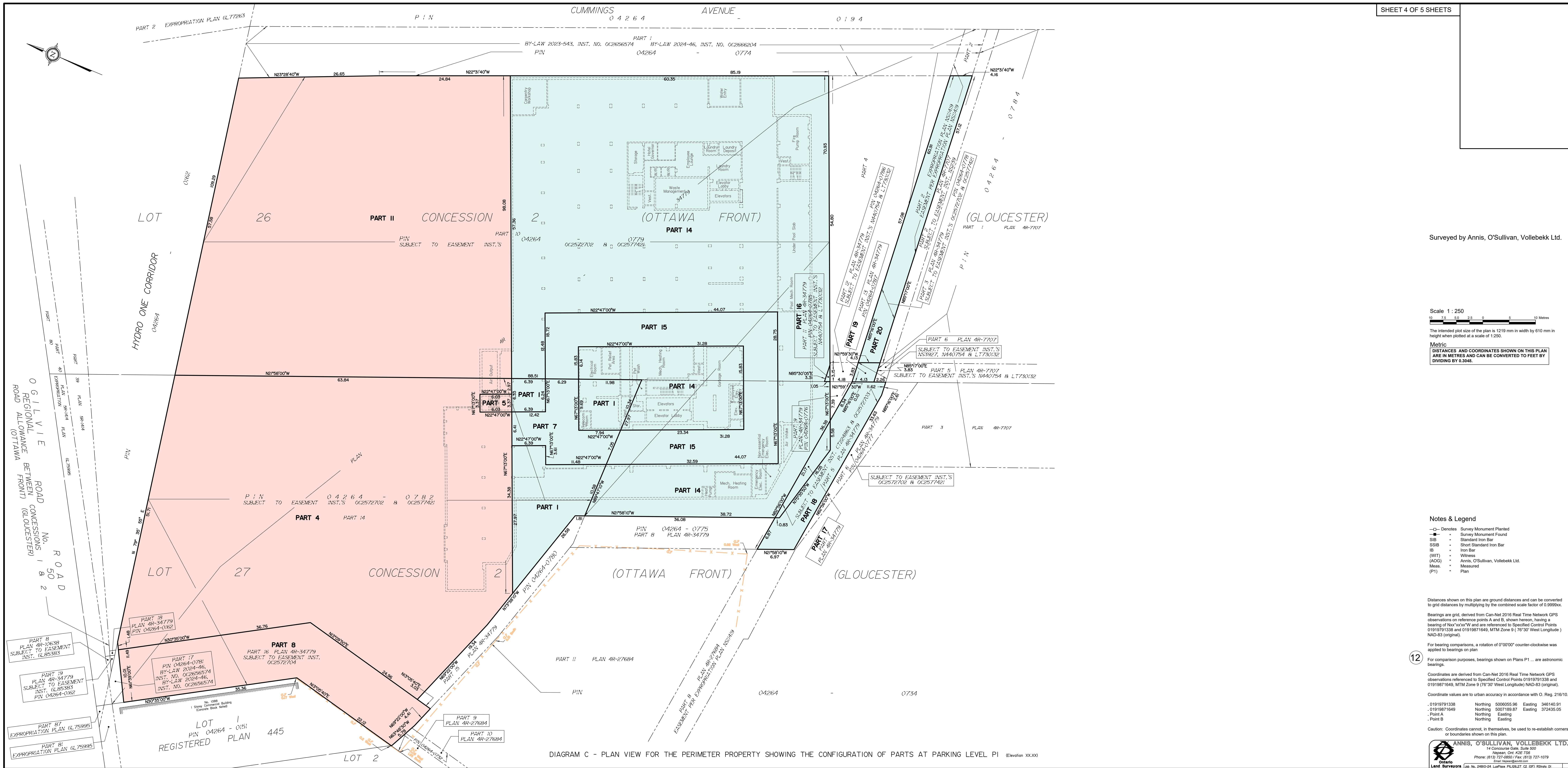


DIAGRAM C - PLAN VIEW FOR THE PERIMETER PROPERTY SHOWING THE CONFIGURATION OF PARTS AT PARKING LEVEL P1 (Elevation XX.XX)

Surveyed by Annis, O'Sullivan, Vollebek Ltd.

Scale 1 : 250

The intended plot size of the plan is 1219 mm in width by 610 mm in height when plotted at a scale of 1:250.

Metric DISTANCES AND COORDINATES SHOWN ON THIS PLAN ARE IN METRES AND CAN BE CONVERTED TO FEET BY DIVIDING BY 0.3048.

Notes & Legend

- Denotes Survey Monument Found
- Denotes Survey Monument Planted
- SIB - Standard Iron Bar
- SSIB - Short Standard Iron Bar
- IB - Iron Bar
- (WIT) - Witness
- (AOC) - Annis, O'Sullivan, Vollebek Ltd.
- Meas. - Measured
- (P1) - Plan

Distances shown on this plan are ground distances and can be converted to grid distances by multiplying by the combined scale factor of 0.9998x.

Bearings are grid, derived from Can-Net 2016 Real Time Network GPS observations on reference points A and B, shown hereon, having a bearing of Nxx°xx'W and are referenced to Specified Control Points 01919791338 and 01919871649, MTM Zone 9 (76°30' West Longitude) NAD-83 (original).

For bearing comparisons, a rotation of 0°00'00" counter-clockwise was applied to bearings on plan.

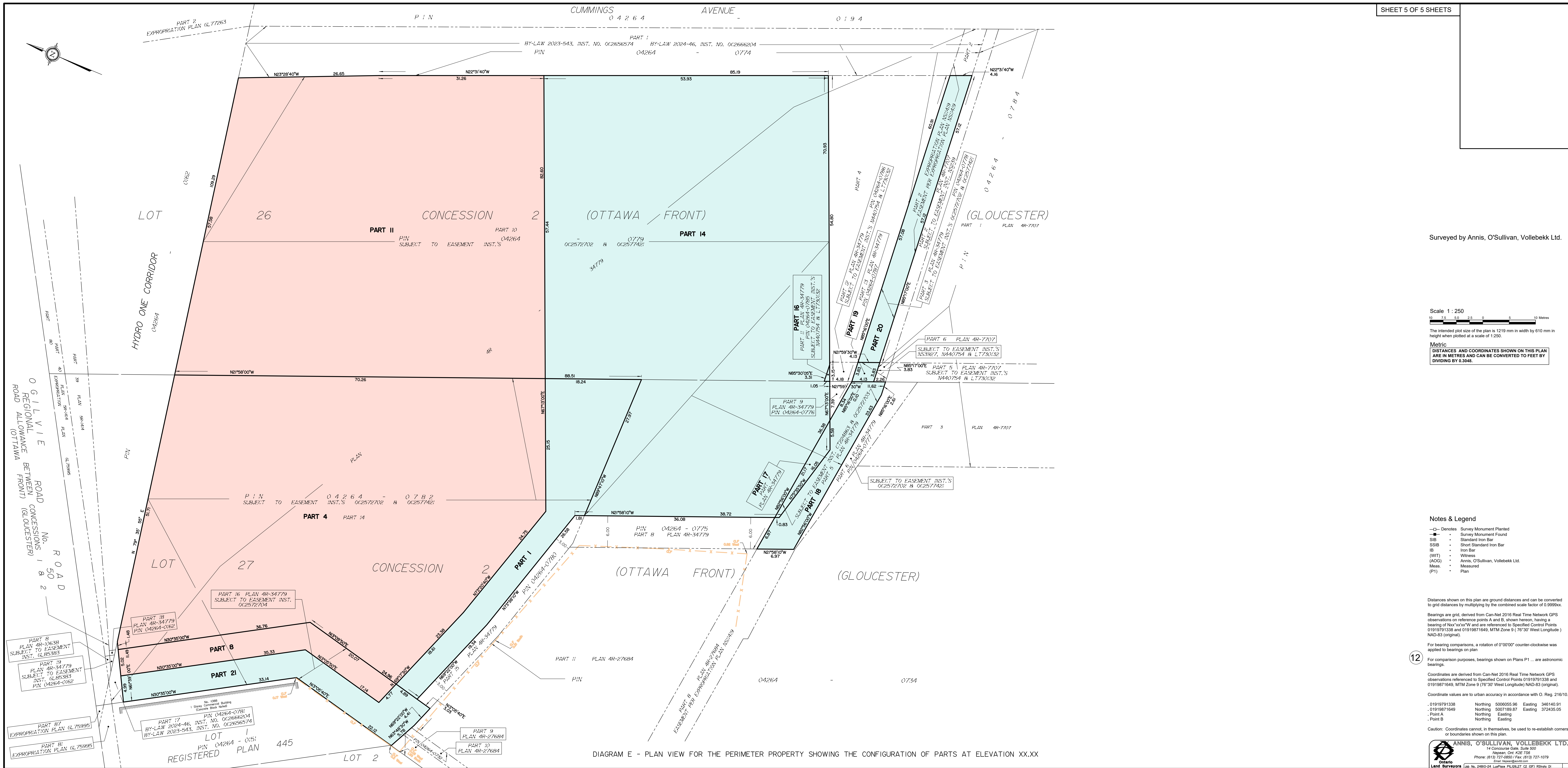
For comparison purposes, bearings shown on Plans P1 ... are astronomic bearings.

Coordinates are derived from Can-Net 2016 Real Time Network GPS observations referenced to Specified Control Points 01919791338 and 01919871649, MTM Zone 9 (76°30' West Longitude) NAD-83 (original).

Coordinate values are to urban accuracy in accordance with O. Reg. 216/10.

01919791338	Northing	5006055.96	Eastings	346140.91
01919871649	Northing	5007189.87	Eastings	372435.05
Point A	Northing	Eastings		
Point B	Northing	Eastings		

Caution: Coordinates cannot, in themselves, be used to re-establish corners or boundaries shown on this plan.



Surveyed by Annis, O'Sullivan, Vollebek Ltd.

Scale 1 : 250

The intended plot size of the plan is 1219 mm in width by 610 mm in height when plotted at a scale of 1:250.

Metric
DISTANCES AND COORDINATES SHOWN ON THIS PLAN ARE IN METRES AND CAN BE CONVERTED TO FEET BY DIVIDING BY 0.3048.

Notes & Legend

- Denotes Survey Monument Planted
- Survey Monument Found
- Standard Iron Bar
- SSIB— Short Standard Iron Bar
- IB— Iron Bar
- (WIT)— Witness
- (ACC)— Annis, O'Sullivan, Vollebek Ltd.
- Meas.— Measured
- (P1)— Plan

Distances shown on this plan are ground distances and can be converted to grid distances by multiplying by the combined scale factor of 0.9998x.

Bearings are grid, derived from Can-Net 2016 Real Time Network GPS observations on reference points A and B, shown hereon, having a bearing of Nxx°xxx'W and are referenced to Specified Control Points 01919791338 and 01919871649, MTM Zone 9 (76°30' West Longitude) NAD-83 (original).

For bearing comparisons, a rotation of 0°00'00" counter-clockwise was applied to bearings on plan.

For comparison purposes, bearings shown on Plans P1 ... are astronomic bearings.

Coordinates are derived from Can-Net 2016 Real Time Network GPS observations referenced to Specified Control Points 01919791338 and 01919871649, MTM Zone 9 (76°30' West Longitude) NAD-83 (original).

Coordinate values are to urban accuracy in accordance with O. Reg. 216/10.

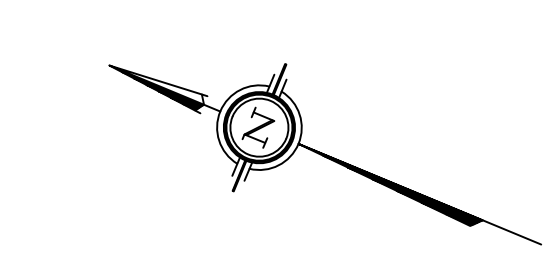
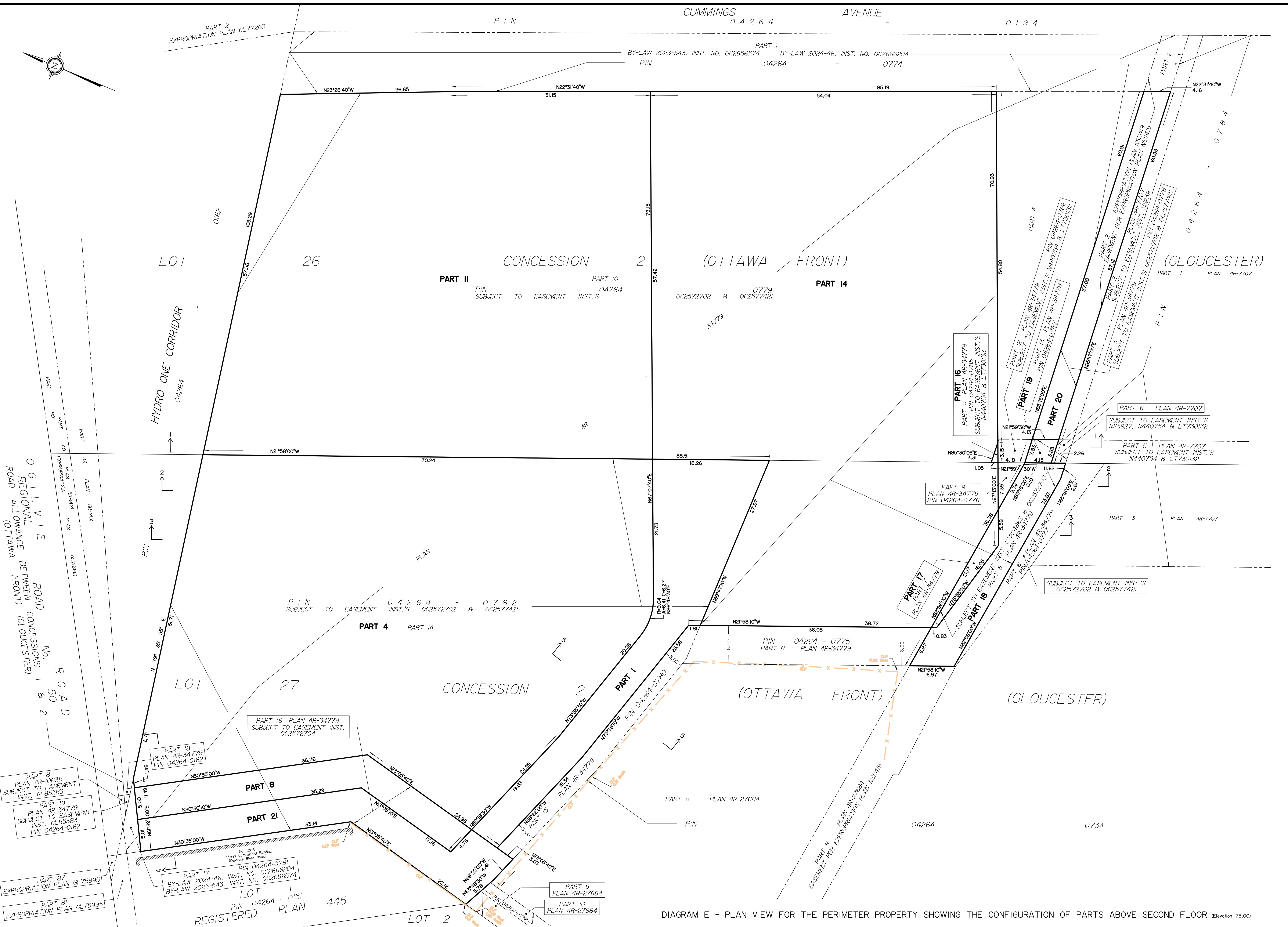
01919791338	Northing	5006055.96	Eastings	346140.91
01919871649	Northing	5007189.87	Eastings	372435.05
Point A	Northing	Eastings		
Point B	Northing	Eastings		

Caution: Coordinates cannot, in themselves, be used to re-establish corners or boundaries shown on this plan.

ANNIS, O'SULLIVAN, VOLLEBEK LTD.
 14 Concourse Gate, Suite 500
 Niagara, Ont. N2E 7S8
 Phone: (613) 727-8800 / Fax: (613) 727-1079
 Email: annis@annis.com

Ontario
 Land Surveyors (Lic. No. 2480-24 Linc/Plan. No. 06-27, C. 07) Reg'd. 01

DIAGRAM E - PLAN VIEW FOR THE PERIMETER PROPERTY SHOWING THE CONFIGURATION OF PARTS AT ELEVATION XX.XX



Surveyed by Annis, O'Sullivan, Vollebek Ltd.

Scale 1 : 250
 10 7.5 5.0 2.5 0 5 10 Metres
 The intended plot size of the plan is 1219 mm in width by 610 mm in height when plotted at a scale of 1:250.

Metric DISTANCES AND COORDINATES SHOWN ON THIS PLAN ARE IN METRES AND CAN BE CONVERTED TO FEET BY DIVIDING BY 0.3048.

- Notes & Legend**
- Denotes Survey Monument Planted
 - Denotes Survey Monument Found
 - SIB— Standard Iron Bar
 - SSIB— Short Standard Iron Bar
 - IB— Iron Bar
 - (WIT)— Witness
 - (AOC)— Annis, O'Sullivan, Vollebek Ltd.
 - Meas.— Measured
 - (P1)— Plan

Distances shown on this plan are ground distances and can be converted to grid distances by multiplying by the combined scale factor of 0.9998x.
 Bearings are grid, derived from Can-Net 2016 Real Time Network GPS observations on reference points A and B, shown hereon, having a bearing of Nxx°xx'x''W and are referenced to Specified Control Points 01919791338 and 01919871649, MTM Zone 9 (76°30' West Longitude) NAD-83 (original).

For bearing comparisons, a rotation of 0°00'00" counter-clockwise was applied to bearings on plan.
 For comparison purposes, bearings shown on Plans P1 ... are astronomic bearings.

Coordinates are derived from Can-Net 2016 Real Time Network GPS observations referenced to Specified Control Points 01919791338 and 01919871649, MTM Zone 9 (76°30' West Longitude) NAD-83 (original).

Coordinate values are to urban accuracy in accordance with O. Reg. 216/10.

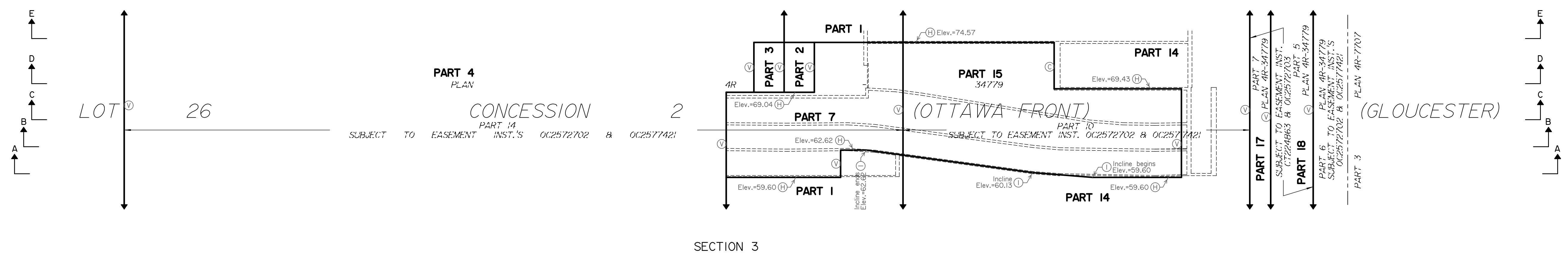
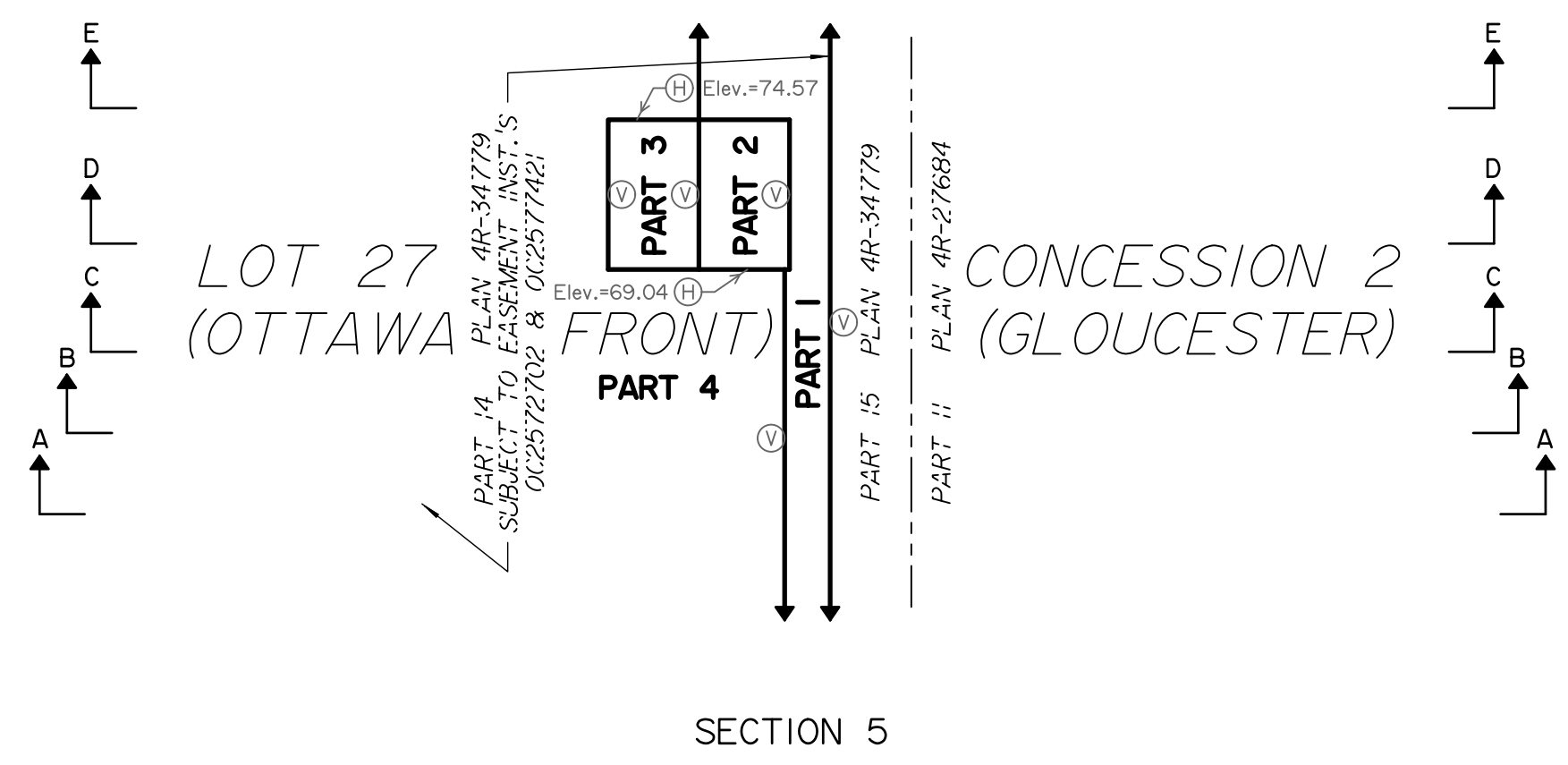
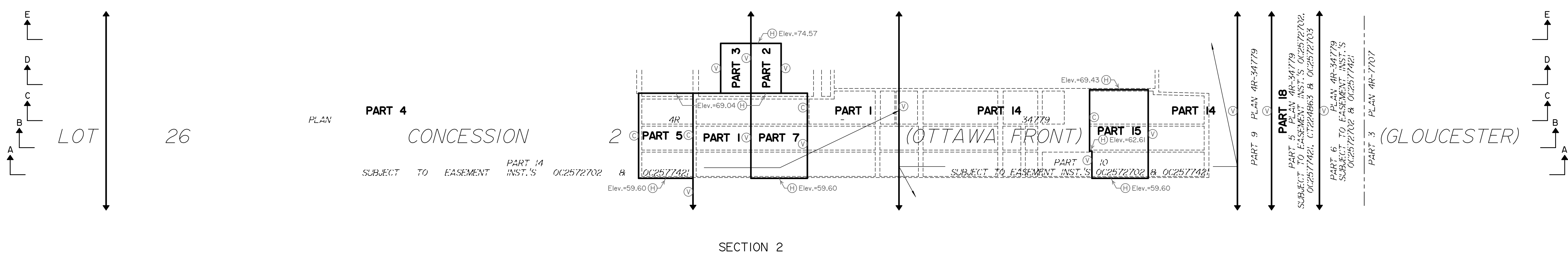
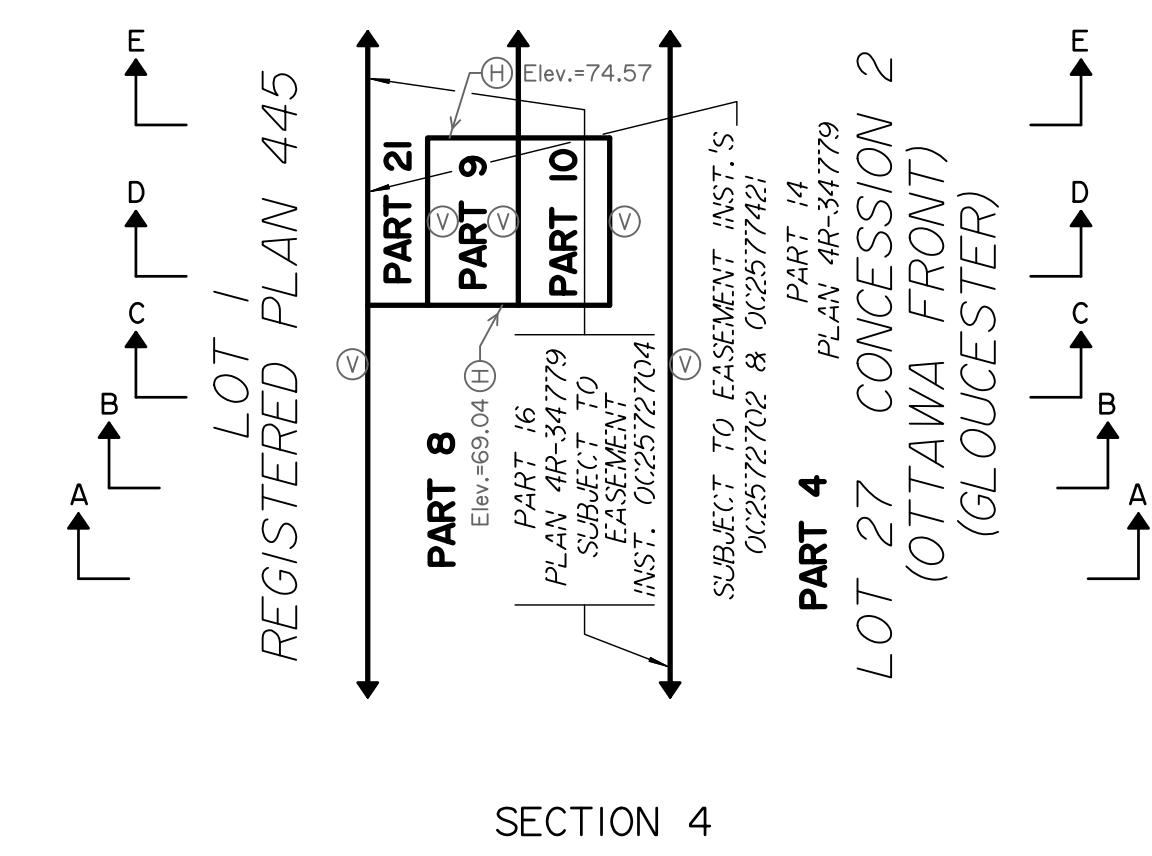
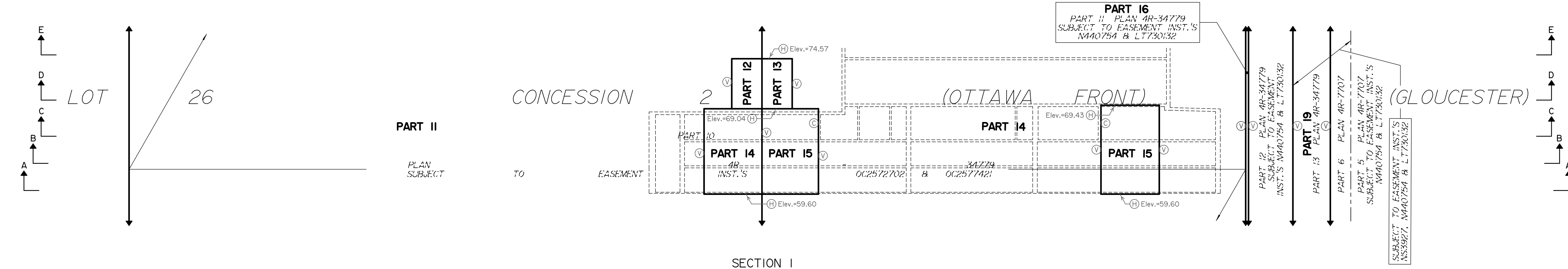
01919791338	Northing	5006055.96	Eastings	346140.91
01919871649	Northing	5007189.87	Eastings	372435.05
Point A	Northing	Eastings		
Point B	Northing	Eastings		

Caution: Coordinates cannot, in themselves, be used to re-establish corners or boundaries shown on this plan.

ANNIS, O'SULLIVAN, VOLLEBEK LTD.
 14 Concourse Gate, Suite 502
 Niagara, Ont. N2E 7S8
 Phone: (613) 727-8800 / Fax: (613) 727-1079
 Email: annis@anniso.com

Ontario Land Surveyors (Lic. No. 2480-24 License No. 06-27, C. 07) Reg'd. 01

DIAGRAM E - PLAN VIEW FOR THE PERIMETER PROPERTY SHOWING THE CONFIGURATION OF PARTS ABOVE SECOND FLOOR (Elevation 75.00)



Surveyed by Annis, O'Sullivan, Vollebek Ltd.

Scale 1 : 250

The intended plot size of the plan is 1219 mm in width by 610 mm in height when plotted at a scale of 1:250.

Metric DISTANCES AND COORDINATES SHOWN ON THIS PLAN ARE IN METRES AND CAN BE CONVERTED TO FEET BY DIVIDING BY 0.3048.

- Notes & Legend**
- Denotes Survey Monument Planted
 - Denotes Survey Monument Found
 - SIB— Standard Iron Bar
 - SSIB— Short Standard Iron Bar
 - IB— Iron Bar
 - (WIT)— Witness
 - (AOC)— Annis, O'Sullivan, Vollebek Ltd.
 - Meas.— Measured
 - (P1)— Plan

Distances shown on this plan are ground distances and can be converted to grid distances by multiplying by the combined scale factor of 0.9998x.

Bearings are grid, derived from Can-Net 2016 Real Time Network GPS observations on reference points A and B, shown hereon, having a bearing of Nxx°xx'W and are referenced to Specified Control Points 01919791338 and 01919871649, MTM Zone 9 (76°30' West Longitude) NAD-83 (original).

For bearing comparisons, a rotation of 0°00'00" counter-clockwise was applied to bearings on plan

For comparison purposes, bearings shown on Plans P1 ... are astronomic bearings.

Coordinates are derived from Can-Net 2016 Real Time Network GPS observations referenced to Specified Control Points 01919791338 and 01919871649, MTM Zone 9 (76°30' West Longitude) NAD-83 (original).

Coordinate values are to urban accuracy in accordance with O. Reg. 216/10.

01919791338	Northing	5006055.96	Eastings	346140.91
01919871649	Northing	5007189.87	Eastings	372435.05
Point A	Northing		Eastings	
Point B	Northing		Eastings	

Caution: Coordinates cannot, in themselves, be used to re-establish corners or boundaries shown on this plan.

ANNIS, O'SULLIVAN, VOLLEBEK LTD.
 14 Concourse Gate, Suite 502
 Niagara, Ont. N2E 7S8
 Phone: (905) 727-0800 / Fax: (905) 727-1079
 Email: annis@anniso.com

Ontario Land Surveyors Inc. No. 24890-24 License No. 06-07-01 (P) 2016