



**Committee of Adjustment**  
Received | Reçu le

2025-02-08

City of Ottawa | Ville d'Ottawa  
**Comité de dérogation**

This document is presented in the language it was provided.  
Ce document est présenté dans la langue dans laquelle il a été fourni.

**Revised May 17, 2022**

**Tree Information report for  
256 Northwestern Ave  
Ottawa, ON  
K1Y 0M3**

**Prepared for ZG Architecture & Design**

819-639-9968  
Zgavran@zg-architecture.com  
Contact: Zoran Gavran

Prepared by Dave Buttivant  
ISA ON-1174A  
Eastern Ontario Arborists Inc.  
PO box 8241  
Ottawa, Ontario  
K1G 3H7  
613-668-3283

August 30, 2021

## **Introduction**

This report has been prepared to adhere with the City of Ottawa Tree Conservation Report Guidelines and the Infill Tree Conservation Program. A site visit was conducted on Tuesday Wednesday August 11, 2021 and **revisited May 17, 2022** by ISA certified arborist Dave Buttivant(ISA ON1174A) at the above mentioned address to assess all trees affected by future development. **This report should be provided to The City of Ottawa forestry department for review and to ALL contractors working on site during excavation and construction.**

## **Arborist Assessment**

Attached is a tree map, site plan and tree inventory. There are three elm trees(1,2,3) located on the property line which should be removed prior to construction. These trees are in poor condition and should be considered high risk to pedestrians and property. All three trees have extensive root rot, butt rot and decay throughout the main trunks(photos attached). **As these trees appear to be possibly shared, a discussion must be had with the neighbouring tree owners as to appointing responsibility and costs related to tree removal. Prior to any tree removals, additional city of Ottawa tree removal permits and compensation will need to be confirmed.**

It is my understanding this will require the planting of 6 trees or compensation in the amount of \$400 per tree not planted. Please refer to the recommended tree planting plan below.

There are two city owned trees(4,5) located in the centre median of Northwestern Ave which could possibly be impacted by city service hook ups. **Protecting these trees critical root zone with fencing erected a minimum of one metre from the trees trunks allows for substantial space for service hook ups.** See photo below.

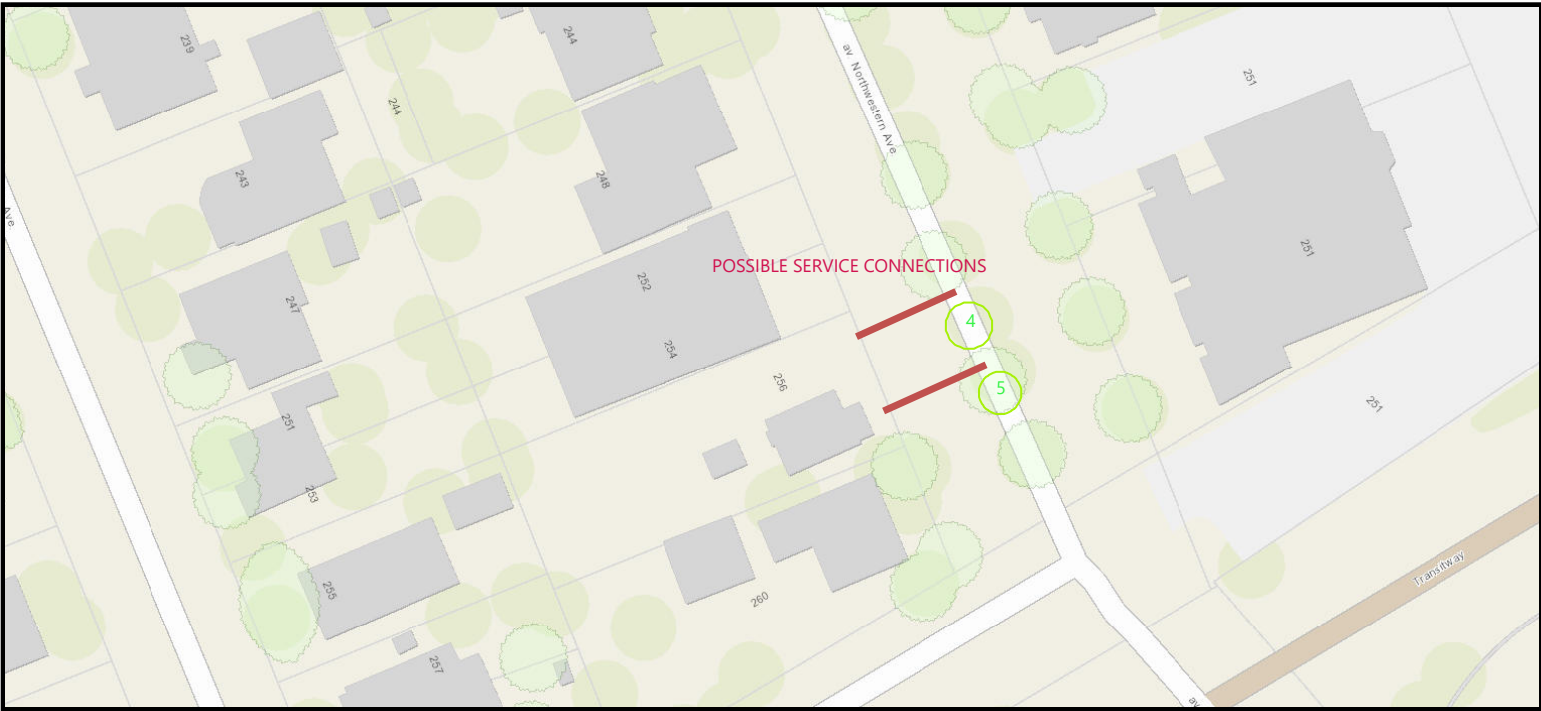
Application Type	Report Requirements		Application Fee		Compensation	
	City	Private	City	Private	City	Private
Construction or no development	TIR short (call 311 to confirm)	TIR short	\$150/tree to \$750 max	\$150/tree to \$750 max	Trunk Formula valuation	1:1 replacement
Infill or demolition	TIR full	TIR full	\$500/tree to \$2500 max	\$500/tree to \$2500 max	Trunk Formula valuation	30-49 cm: 2:1 replacement
						≥50 cm: 3:1 replacement
						OR \$400 per tree not planted
Planning Act	TCR	TCR	Included in development fees		Through Landscape Plan	

### Information for contractors when working around trees

Soil compaction and vibrations from construction equipment can cause root damage. The Municipal Trees and Natural Areas Protection By-law requires that contractors working near trees must:

- erect a fence at the critical root zone (CRZ) of trees
- not place any material or equipment within the CRZ of the tree
- not attach any signs, notices or posters to any tree
- not raise or lower the existing grade within the CRZ of a tree without approval of Forestry Services
- not tunnel or bore when digging within the CRZ of any tree
- not damage the root system, trunk or branches of any tree
- ensure that exhaust fumes from all equipment are not directed towards any tree's canopy

#	SPECIES	DBH/cm	CRZ/m	LOCATION	CONDITION	ACTION
1	SIBERIAN ELM	47	4.7	ADJACENT/ SHARED	POOR	REMOVE
2	SIBERIAN ELM	20	2	ADJACENT/ SHARED	POOR	REMOVE
3	SIBERIAN ELM	68	6.8	ADJACENT/ SHARED	POOR	REMOVE
4	BASSWOOD	4	.4	CITY	GOOD	PROTECT
5	HONEY LOCUST	10	1	CITY	GOOD	PROTECT







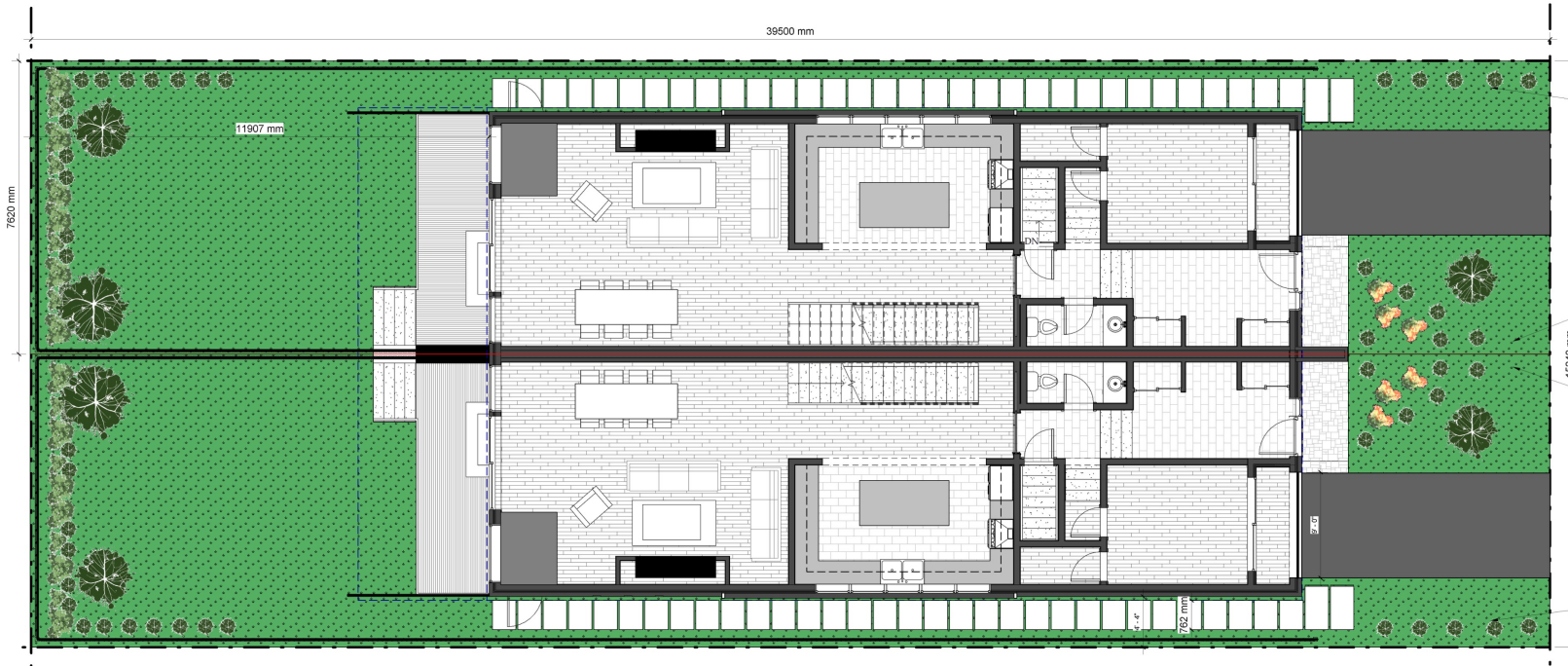








I recommend planting larger native trees(red maple, red oak, hackberry etc.) in the rear yards and smaller native trees(serviceberry, chokecherry, Amur maple) in the front yard. Please follow tree planting requirements below.





## TREE PLANTING RECOMMENDATIONS

- Maintain 1.5m from sidewalk or MUP/cycle track.
- Maintain 2.5m from curb
- Coniferous species require a minimum 4.5m setback from curb, sidewalk or MUP/cycle track/pathway.
- Maintain 7.5m between large growing trees, and 4m between small growing trees. Park or open space planting should consider 10m spacing.
- Adhere to Ottawa Hydro's planting guidelines (species and setbacks) when planting around overhead primary conductors.

### Tree specifications

- Minimum stock size: 50mm tree caliper for deciduous, 200cm height for coniferous.
- Maximize the use of large deciduous species wherever possible to maximize future canopy coverage
- Tree planting on city property shall be in accordance with the City of Ottawa's Tree Planting Specification; and include watering and warranty as described in the specification (can be provided by Forestry Services).
- Plant native trees whenever possible
- No root barriers, dead-man anchor systems, or planters are permitted.
- No tree stakes unless necessary (and only 1 on the prevailing winds side of the tree)

### Hard surface planting

- Curb style planter is highly recommended
- No grates are to be used and if guards are required, City of Ottawa standard (which can be provided) shall be used.
- Trees are to be planted at grade

Please visit <http://www.ottawa.ca/treebylaw> to be sure of all of your requirements prior to demolition.

Any questions, concerns or City of Ottawa forestry department feedback can be directed to:

Dave Buttivant(ISA ON1174A \*TRAQ)  
613-668-3283  
Dave@easternontarioarborists.ca