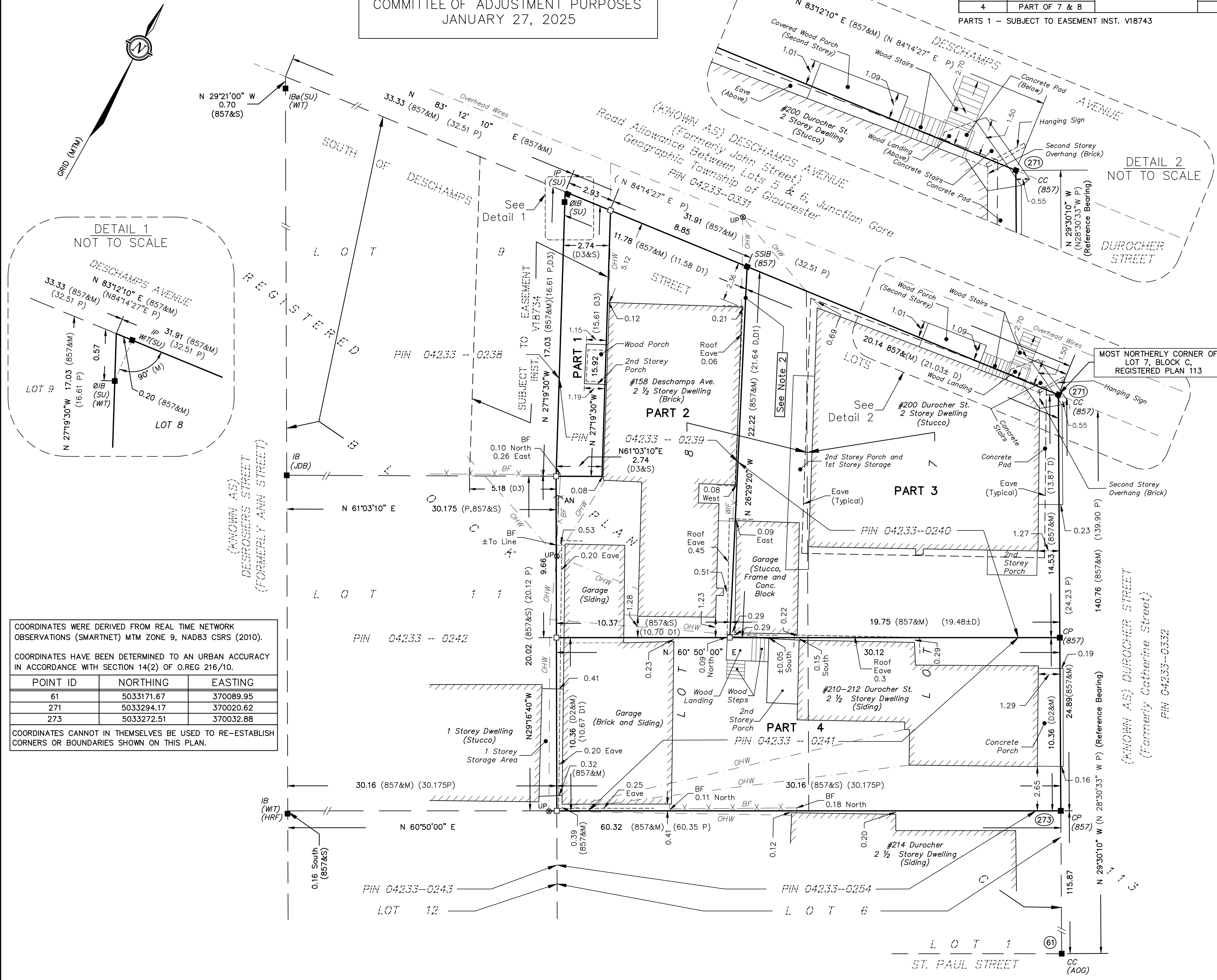


METRIC
 DISTANCES AND COORDINATES SHOWN ON THIS PLAN ARE IN METRES
 AND CAN BE CONVERTED TO FEET BY DIVIDING BY 0.3048

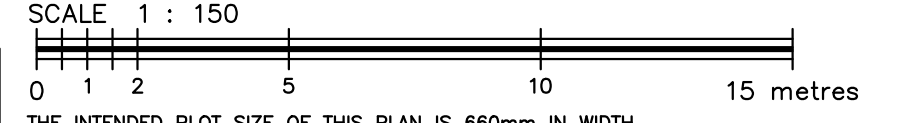
PLAN PREPARED FOR
 COMMITTEE OF ADJUSTMENT PURPOSES
 JANUARY 27, 2025

SCHEDULE				
PART	LOT	REGISTERED PLAN	PIN	AREA (m ²)
1	PART OF 8	113	04233-0239	45
2	PART OF 7 & 8		04233-0240	219
3	PART OF 7 & 8		04233-0241	354
4	PART OF 7 & 8		04233-0241	312

Committee of Adjustment
 Received | Reçu le
 2025-03-17
 City of Ottawa | Ville d'Ottawa
 Comité de dérogation



PLAN OF SURVEY OF
 LOTS 7 & 8
 BLOCK C
 REGISTERED PLAN 113
 CITY OF OTTAWA



FAIRHALL, MOFFATT & WOODLAND LIMITED
 ONTARIO LAND SURVEYORS

- NOTES**
- BEARINGS ARE GRID AND ARE DERIVED FROM THE WESTERLY LIMIT OF DUROCHER STREET AS SHOWN ON A PLAN OF SURVEY BY J.D. BARNES LIMITED DATED OCTOBER 06, 2023 (REF. 03-10-182-00), HAVING A BEARING OF N 29°30'10" W AND ARE REFERRED TO THE CENTRAL MERIDIAN, 76°30' W LONGITUDE, MTM ZONE 9, NAD27.
 - LIMIT BETWEEN PINS 045233-0239 & 04233-0240 SET TO CLEAR FACE OF BUILDINGS, ACCEPTED OCCUPATION AS EVIDENCE OF DEED LINE.
 - DISTANCES ARE GROUND AND CAN BE CONVERTED TO GRID BY MULTIPLYING BY THE COMBINED SCALE FACTOR 0.999948.

- LEGEND**
- - SURVEY MONUMENT SET
 - - SURVEY MONUMENT FOUND
 - SIB - STANDARD IRON BAR
 - SSIB - SHORT STANDARD IRON BAR
 - IB - IRON BAR
 - CC - CUT CROSS
 - CP - CONCRETE PIN
 - IP - IRON PIPE
 - ØIB - ROUND IRON BAR
 - (P) - REGISTERED PLAN 113
 - (857) - FAIRHALL, MOFFATT AND WOODLAND LIMITED, O.L.S. (REF. 5-113 GR)
 - (HRF) - H.R. FARLEY, O.L.S.
 - (AOG) - ANNIS, O'SULLIVAN, VOLLEBEK LTD., O.L.S.
 - PIN - PROPERTY IDENTIFIER NUMBER
 - (S) - SET
 - (M) - MEASURED
 - D - DESCRIPTION PER PIN 04233-0240
 - D1 - INSTRUMENT V10780
 - D2 - INSTRUMENT NS238224
 - D3 - INSTRUMENT V18734
 - BF - BOARD FENCE
 - ØUP - UTILITY POLE
 - OHW - OVERHEAD UTILITY WIRES
 - ← AN - GUY WIRE AND ANCHOR
 - WIF - WROUGHT IRON FENCE

SURVEYOR'S CERTIFICATE

I CERTIFY THAT:

- THIS SURVEY AND PLAN ARE CORRECT AND IN ACCORDANCE WITH THE SURVEYS ACT, THE SURVEYORS ACT, THE LAND TITLES ACT AND THE REGULATIONS MADE UNDER THEM.
- THE SURVEY WAS COMPLETED ON _____ 2025

JANUARY 27, 2025

JOHN H. CUTRI
 ONTARIO LAND SURVEYOR

THIS PLAN OF SURVEY RELATES TO AOLS PLAN SUBMISSION FORM NUMBER V-*****.

COORDINATES WERE DERIVED FROM REAL TIME NETWORK OBSERVATIONS (SMARTNET) MTM ZONE 9, NAD83 CSRS (2010).

COORDINATES HAVE BEEN DETERMINED TO AN URBAN ACCURACY IN ACCORDANCE WITH SECTION 14(2) OF O.REG 216/10.

POINT ID	NORTHING	EASTING
61	5033171.67	370089.95
271	5033294.17	370020.62
273	5033272.51	370032.88

COORDINATES CANNOT IN THEMSELVES BE USED TO RE-ESTABLISH CORNERS OR BOUNDARIES SHOWN ON THIS PLAN.

Fairhall Moffatt & Woodland LIMITED ONTARIO LAND SURVEYORS Surveying and Land Information Services 100-600 TERRY FOX DRIVE, KANATA, ONTARIO K2L 4B6 TEL: (613) 591-2380 FAX: (613) 591-1495 www.fmw.on.ca	JOB No. AE20000
	E 370015, N 5033275
	REFERENCE No. 5(d) - 113 GR
	s:\JOBS\AE20000\DWGS drp_ae20000.dwg (cnr)