

PLAN OF SURVEY OF
**PART OF LOT 12
CONCESSION 4**
(Geographic Township of Osgoode)
CITY OF OTTAWA
Surveyed by Annis, O'Sullivan, Vollebakk Ltd.

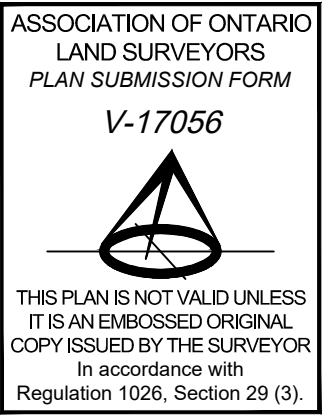
Scale 1 : 1250
50 37.5 25 12.5 0 25 50 Metres

Metric
DISTANCES AND COORDINATES SHOWN ON THIS PLAN
ARE IN METRES AND CAN BE CONVERTED TO FEET BY
DIVIDING BY 0.3048.

Surveyor's Certificate
I CERTIFY THAT:
1. This survey and plan are correct and in accordance with the Surveys
Act, the Surveyors Act and the Land Titles Act and the regulations
made under them.
2. The survey was completed on the ____ day of _____, 2021.

Date _____ V. Andrew Sheip
Ontario Land Surveyor

- Notes & Legend
- | Denotes | |
|---------|-----------------------------------|
| □ | Survey Monument Planted |
| ■ | Survey Monument Found |
| SB | Standard Iron Bar |
| SSB | Short Standard Iron Bar |
| IB | Iron Bar |
| (WT) | Witness |
| Mess. | Measured |
| (AOG) | Annis, O'Sullivan, Vollebakk Ltd. |
| (P1) | Plan SR-0085 |
| (P2) | Plan SR-10582 |
| (P3) | Plan SR-8085 |
| (P4) | Plan SR-8129 |
| (P5) | Plan SR-14962 |
| (P6) | Plan SR-17301 |
| (P7) | Plan SR-19489 |
| (P8) | (AOG) Plan dated Sept. 14, 1992 |
| BF | Board Fence |
| PBW | Post and Wire Fence |
| Gate | Gate |
| UP | Utility Pole |
| AN | Anchor |
| OHW | Overhead Wires |
| C/L | Centreline |
| — | Property Line |
| MP | Metal Post (Fence) |



Distances shown on this plan are ground distances and can be converted to grid distances by multiplying by the combined scale factor of 0.999951.
Bearings are grid, derived from Can-Net 2016 Real Time Network GPS observations on reference points A and B, shown hereon, having a bearing of N24°03'55"W and are referenced to Specified Control Points 01919760735 and 01919871649, MTM Zone 9 (76°30' West Longitude) NAD-83 (original).

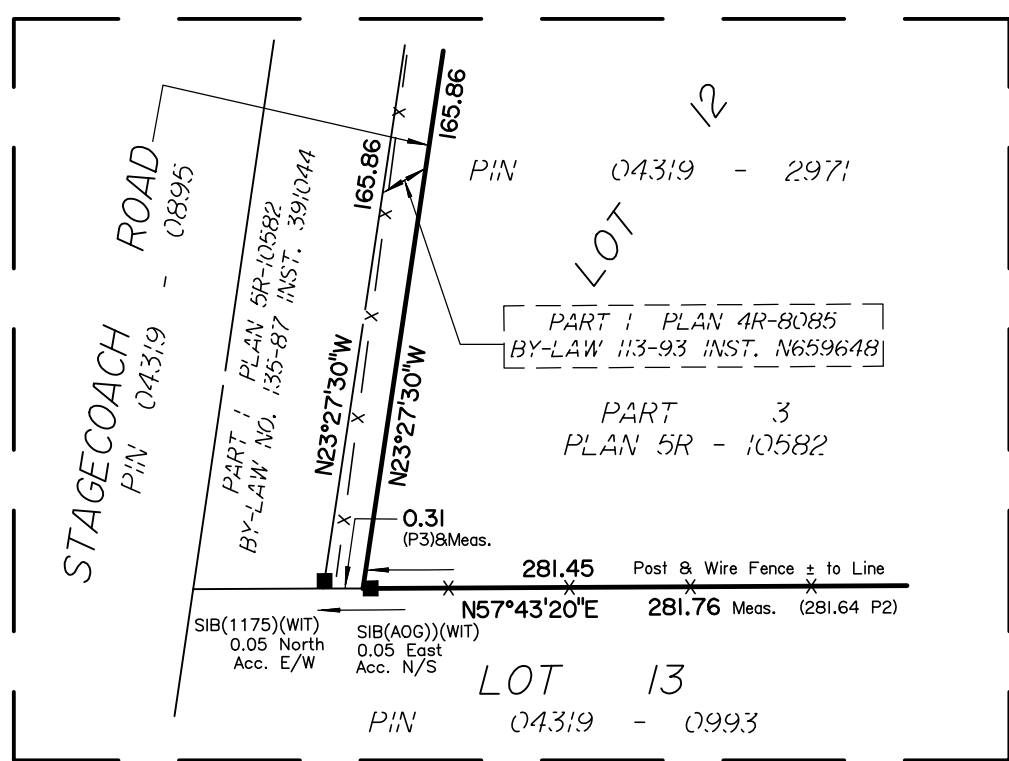
For comparison purposes, bearings shown on Plans (P1) to (P6) (Inclusive) and (P8) are astronomic bearings.

Coordinates are derived from Can-Net 2016 Real Time Network GPS observations referenced to Specified Control Points 01919760735 and 01919871649, MTM Zone 9 (76°30' West Longitude) NAD-83 (original).

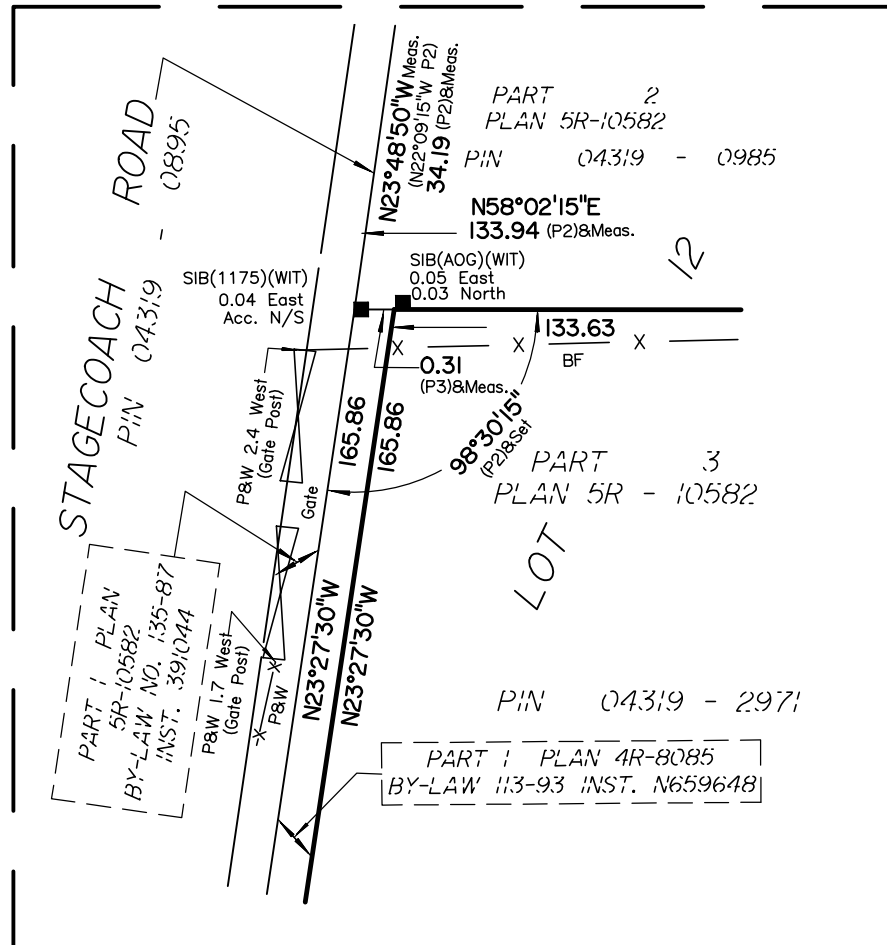
Coordinate values are to urban accuracy in accordance with O. Reg. 216/10.

01919760735 Northing 5026903.34 Easting 376968.72
01919871649 Northing 5007189.87 Easting 372435.05
Point A Northing 5010370.10 Easting 377224.41
Point B Northing 5010002.38 Easting 377388.63

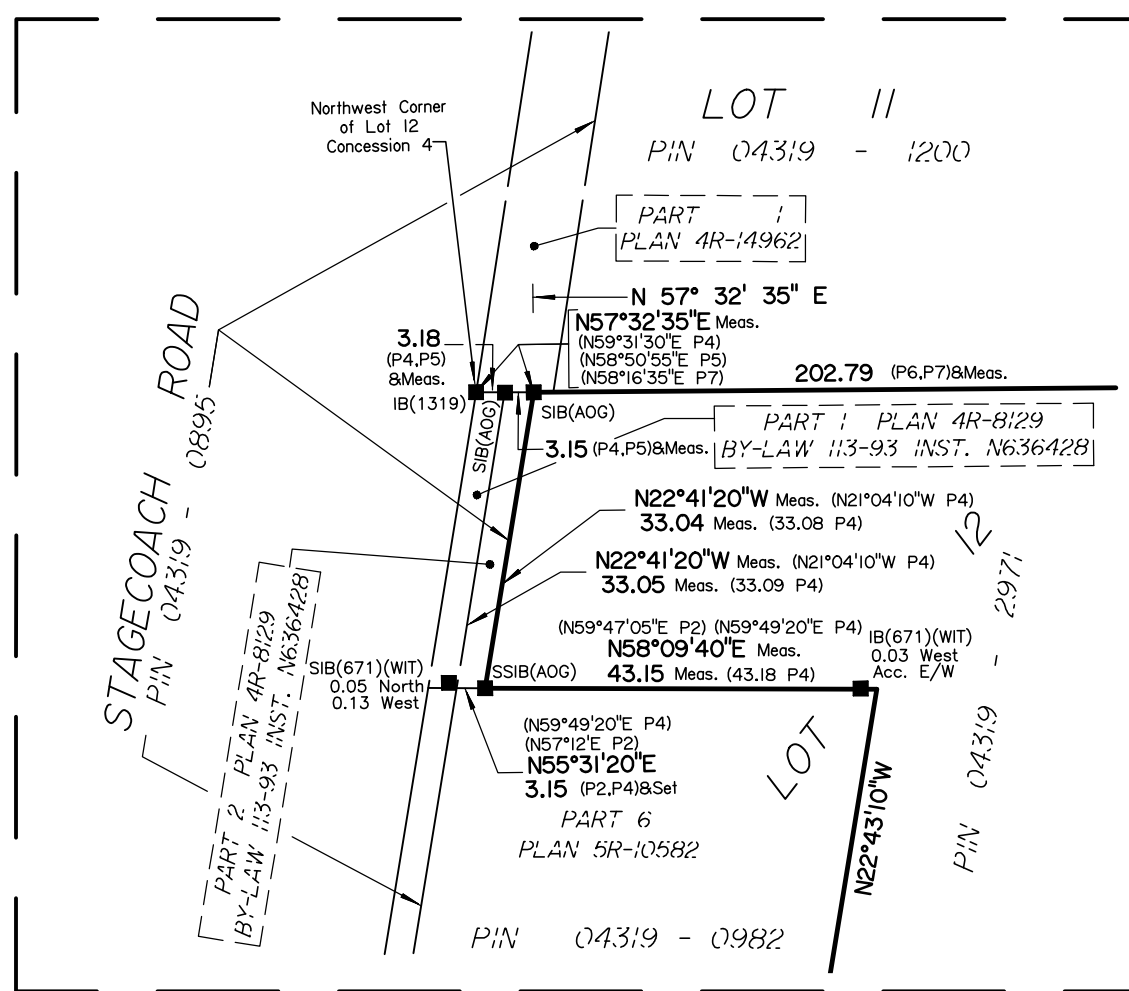
Caution: Coordinates cannot, in themselves, be used to re-establish corners or boundaries shown on this plan.



Detail 1 (Not to Scale)



Detail 2 (Not to Scale)



Detail 3 (Not to Scale)

