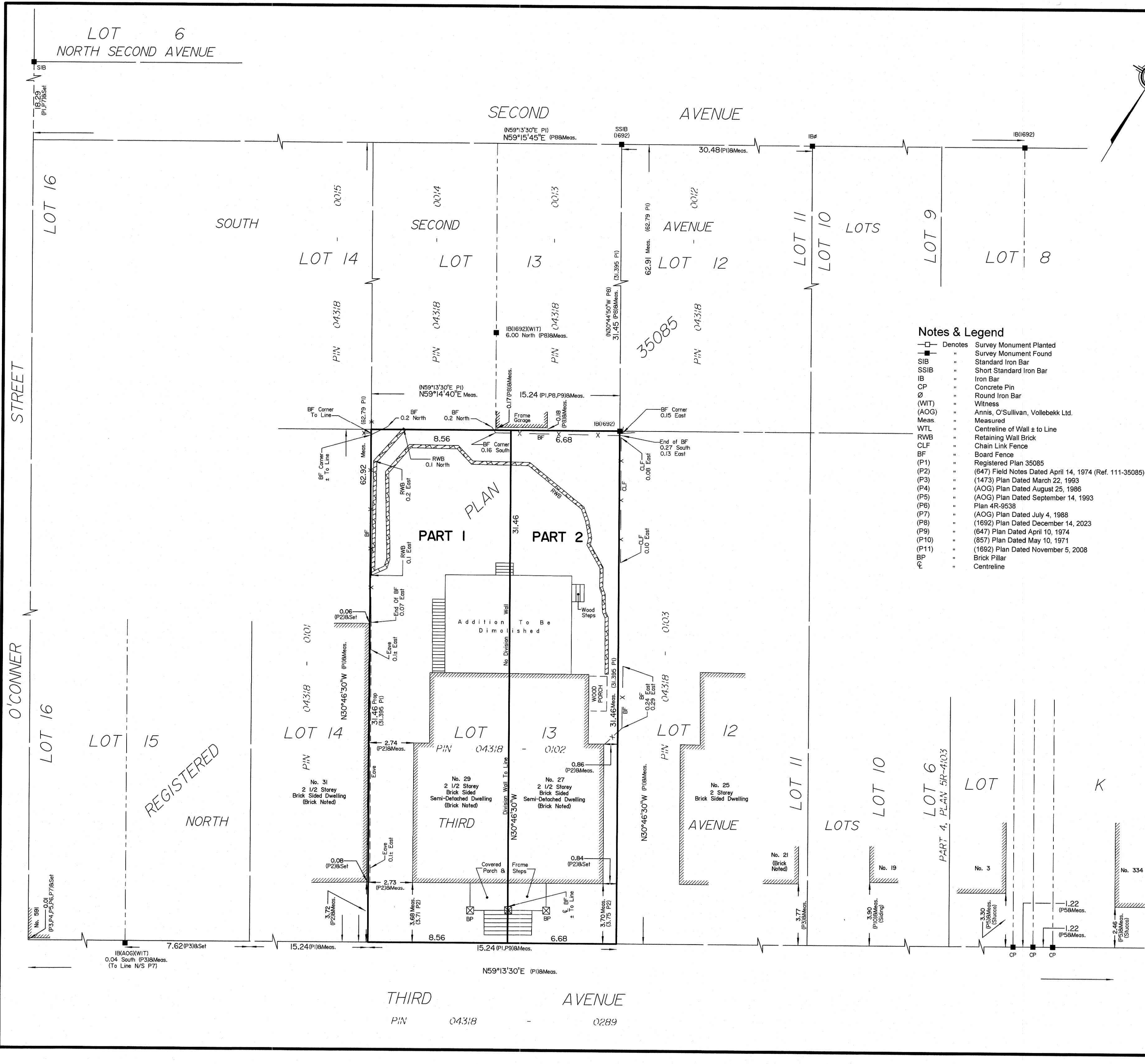


Z:\Active\2023\25577-25_Art Properties_27-28 Third Ave_R-Pl_KJLDrawings\25577-25_Art Properties\Const\L113 PL35085 R D2.dwg



Committee of Adjustment
Received | Reçu le
2025-06-19
City of Ottawa | Ville d'Ottawa
Comité de dérogation

SCHEDULE				
AREA (Sq.m.)	PART	LOT	PLAN	PIN
269.3	1	ALL OF 13		ALL OF
210.2	2	NORTH THIRD AVENUE	35085	04318-0102

PLAN OF SURVEY OF
LOT 13, NORTH THIRD AVENUE
REGISTERED PLAN 35085
CITY OF OTTAWA
Surveyed by Annis, O'Sullivan, Vollebakk Ltd.

Scale 1 : 150
6 4.5 3.0 1.5 0 3 6 Metres
The intended plot size of the plan is 610 mm in width by 457 mm in height when plotted at a scale of 1:150.

Metric
DISTANCES AND COORDINATES SHOWN ON THIS PLAN ARE IN METRES AND CAN BE CONVERTED TO FEET BY DIVIDING BY 0.3048.

Surveyor's Certificate
I CERTIFY THAT:
1. This survey and plan are correct and in accordance with the Surveys Act, the Surveyors Act and the Land Titles Act and the regulations made under them.
2. The survey was completed on the ___ day of _____, 2025.

MMM DD YYYY
Date
T. Hartwick
Ontario Land Surveyor
This plan of survey relates to AOLS Plan Submission Form Number V-

Distances shown on this plan are ground distances and can be converted to grid distances by multiplying by the combined scale factor of 0.999940.

Bearings are grid, derived from Can-Net 2016 Real Time Network GPS observations on reference points A and B, shown hereon, having a bearing of Nxx°xx'xx"W and are referenced to Specified Control Points 01919680005 and 01919680105, MTM Zone 9 (76°30' West Longitude) NAD-83 (original).

For bearing comparisons, a rotation of 0°35'10" counter-clockwise was applied to bearings on plan (P1).

Coordinates are derived from Can-Net 2016 Real Time Network GPS observations referenced to Specified Control Points 01919680005 and 01919680105, MTM Zone 9 (76°30' West Longitude) NAD-83 (original).

Coordinate values are to urban accuracy in accordance with O. Reg. 216/10.

.01919680005	Northing	5027191.26	Easting	361496.76
.01919680105	Northing	5024915.16	Easting	373971.65
.Point A	Northing		Easting	
.Point B	Northing		Easting	

Caution: Coordinates cannot, in themselves, be used to re-establish corners or boundaries shown on this plan.

ANNIS, O'SULLIVAN, VOLLEBEKK LTD.
14 Concourse Gate, Suite 500
Nepean, Ont. K2E 7S6
Phone: (613) 727-0850 / Fax: (613) 727-1079
Email: Nepean@aovltd.com
Ontario
Land Surveyors
Job No. 25577-25 ArtProp&Const\L113 PL35085 R D2





SOLD

FOR SALE

HER
RK
613.983.0868
www.athensark.ca
& 29
PLEX









