

METRIC  
DISTANCES AND COORDINATES SHOWN ON THIS PLAN ARE IN METRES  
AND CAN BE CONVERTED TO FEET BY DIVIDING BY 0.3048

Committee of Adjustment  
Received | Reçu le  
2025-06-05  
City of Ottawa | Ville d'Ottawa  
Comité de dérogation

PART 3, PLAN 5R-9945  
CONCESSION

SCHEDULE			
PART	LOT	CONCESSION	PIN
1	PART OF 15	4	ALL OF 04527-0058

I REQUIRE THIS PLAN TO BE  
DEPOSITED UNDER THE  
LAND TITLES ACT.

DATE 2019/04/12

JOHN H. GUTRI, O.L.S.

PLAN 4R-31909  
RECEIVED AND DEPOSITED

DATE April 15/19

A. McMullen  
REPRESENTATIVE FOR  
LAND REGISTRAR FOR THE  
LAND TITLES DIVISION OF  
OTTAWA - CARLETON (N° 4)

PLAN OF SURVEY OF  
PART OF LOT 15  
CONCESSION 4  
GEOGRAPHIC TOWNSHIP OF MARCH  
CITY OF OTTAWA

SCALE 1 : 1500  
0 10 20 50 100 150 metres

FAIRHALL, MOFFATT & WOODLAND LIMITED  
ONTARIO LAND SURVEYORS

#### NOTES

- BEARINGS ARE GRID, DERIVED FROM NCC HORIZONTAL CONTROL POINTS 019861600 (E 348767.812, N 5027801.409) AND 019861599 (E 347839.642, N 5026918.073) AND ARE REFERRED TO THE CENTRAL MERIDIAN, 76°30'W LONGITUDE MTM ZONE 9, (NAD83 ORIGINAL).
- DISTANCES ARE GROUND AND CAN BE CONVERTED TO GRID BY MULTIPLYING BY THE COMBINED SCALE FACTOR 0.999917.

COORDINATES ARE MTM ZONE 9 NAD83 ORIGINAL, DERIVED FROM NCC HORIZONTAL CONTROL POINTS.  
COORDINATES HAVE BEEN DETERMINED TO AN URBAN ACCURACY IN ACCORDANCE WITH SECTION 14(2) OF O. REG 216/10.

POINT ID	NORTHING	EASTING
89	5026709.907	348070.000
136	5027022.659	348410.409
138	5026798.970	348616.470
88	5026930.212	347864.743

COORDINATES CANNOT IN THEMSELVES BE USED TO RE-ESTABLISH CORNERS OR BOUNDARIES SHOWN ON THIS PLAN.

#### LEGEND

- - SURVEY MONUMENT SET
- - SURVEY MONUMENT FOUND
- SIB - STANDARD IRON BAR
- SSIB - SHORT STANDARD IRON BAR
- IB - IRON BAR
- (P) - PLAN 5R-9945
- (P1) - PLAN 5R-10864
- (P2) - PLAN 4R-14250
- (D) - INST. CT113076
- (D1) - PLAN ATTACHED TO INST. MH5906 BY H. R. FARLEY O.L.S., DATED JULY 12, 1966
- (S) - SET
- (M) - MEASURED
- (857) - FAIRHALL, MOFFATT & WOODLAND LIMITED, O.L.S. (REF. 5-B(OF)NP)
- (NCC) - NATIONAL CAPITAL COMMISSION
- (818) - J. R. HILEY, O.L.S.
- (1326) - W. R. TAGGART, O.L.S.
- (647) - H. R. FARLEY, O.L.S.
- (SU) - SOURCE UNKNOWN
- (WIT) - WITNESS
- PIN - PROPERTY IDENTIFIER NUMBER


#### SURVEYOR'S CERTIFICATE

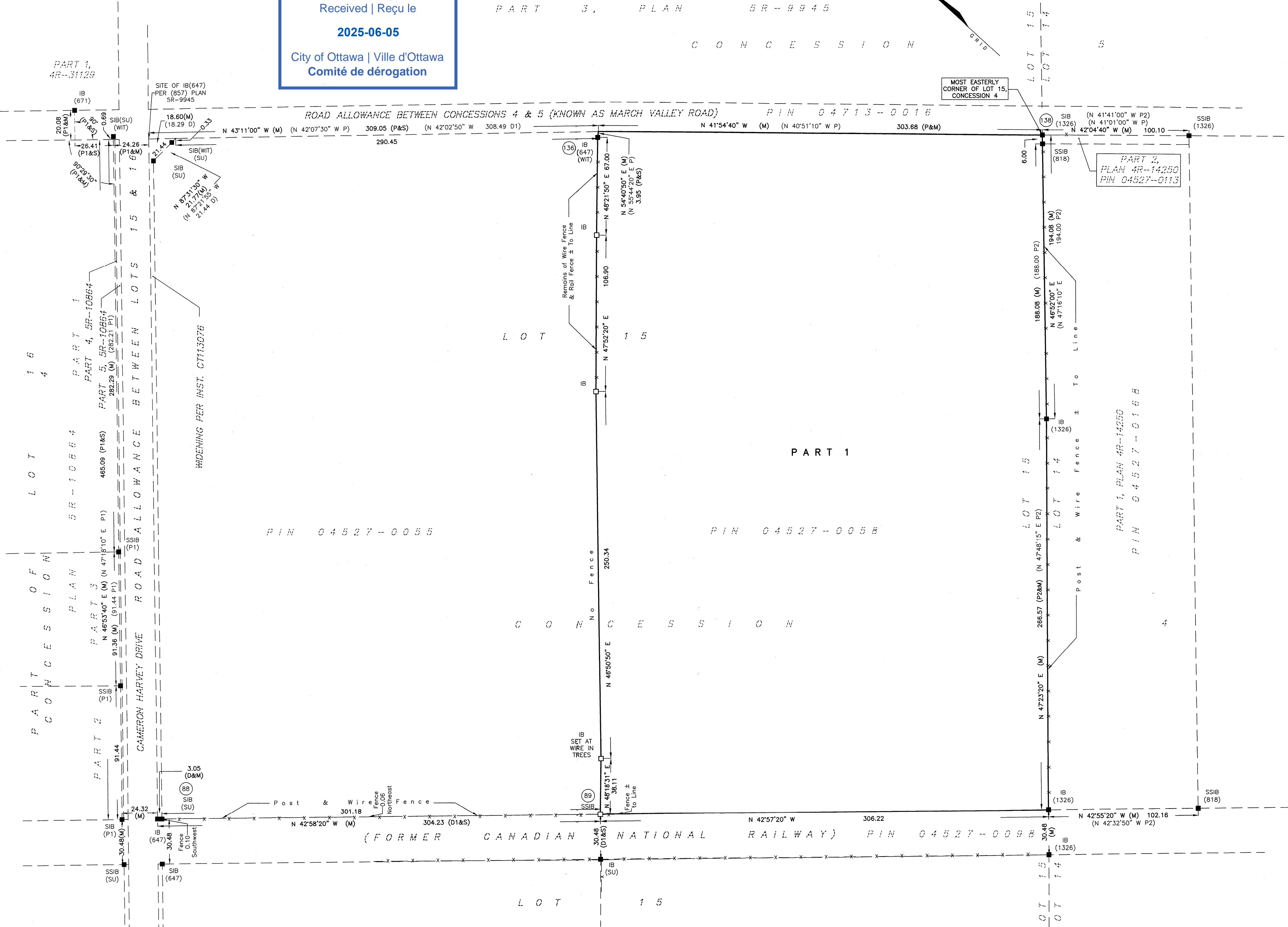
I CERTIFY THAT:  
1. THIS SURVEY AND PLAN ARE CORRECT AND IN ACCORDANCE WITH THE SURVEYS ACT, THE SURVEYORS ACT, THE LAND TITLES ACT AND THE REGULATIONS MADE UNDER THEM.

2. THE SURVEY WAS COMPLETED ON MARCH 12, 2019.

DATE 2019/04/12

JOHN H. GUTRI  
ONTARIO LAND SURVEYOR

<b>Fairhall Moffatt &amp; Woodland</b> LIMITED ONTARIO LAND SURVEYORS Surveying and Land Information Services 100-600 TERRY FOX DRIVE, KANATA, ONTARIO K2L 4B6 TEL: (613) 591-2580 FAX: (613) 591-1495 www.fmw.on.ca		JOB No.	2 1 2 8 0 0
		E	348397, N 5027187
		REFERENCE No.	206 - 4 MARCH
		S:\JOBS\212800\DWGS 2019-04-03	rp128z.dwg (kb)







SCHEDULE				
PART	LOT	CONCESSION	PIN	AREA
1	PART OF LOT 15	4	PART OF PIN 04527-0058	1020.22m <sup>2</sup>

Committee of Adjustment  
Received | Reçu le

2025-06-05

City of Ottawa | Ville d'Ottawa  
Comité de dérogation

PLAN 4R-35376

Received and deposited

March 29<sup>th</sup>, 2023

Carl Tallon

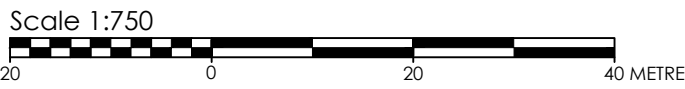
Representative for the  
Land Registrar for the  
Land Titles Division of  
Ottawa-carleton (No.4)

PLAN OF SURVEY OF

PART OF LOT 15  
CONCESSION 4

(GEOGRAPHIC TOWNSHIP OF MARCH)

CITY OF OTTAWA



THE INTENDED PLOT SIZE OF THIS PLAN IS 914mm IN WIDTH BY 609mm IN HEIGHT WHEN PLOTTED AT A SCALE OF 1:750.

**METRIC CONVERSION**  
DISTANCES AND COORDINATES SHOWN ON THIS PLAN ARE IN METRES AND CAN BE CONVERTED TO FEET BY DIVIDING BY 0.3048

**GRID SCALE CONVERSION**  
DISTANCES ARE GROUND AND CAN BE CONVERTED TO GRID BY MULTIPLYING BY THE COMBINED SCALE FACTOR OF 0.999917.

**BEARING NOTE**  
BEARINGS ARE GRID, DERIVED FROM THE CAN-NET VRS NETWORK OBSERVATIONS ON NCC HORIZONTAL CONTROL MONUMENTS 19773035 AND 19680191, CENTRAL MERIDIAN, 76°30' WEST LONGITUDE MTM ZONE 9, NAD83 (ORIGINAL).

19773035 N:5006060.42 E:324888.04  
19680191 N:5033564.26 E:388064.94

LEGEND		
■	DENOTES	FOUND MONUMENTS
□		SET MONUMENTS
IB	"	IRON BAR
IBD	"	ROUND IRON BAR
SIB	"	STANDARD IRON BAR
SSIB	"	SHORT STANDARD IRON BAR
CC	"	CUT CROSS
CP	"	CONCRETE PIN
WIT	"	WITNESS
PIN	"	IDENTIFICATION NUMBER
M/MEAS	"	MEASURED
PROP	"	PROPORTIONED
OU	"	ORIGIN UNKNOWN
STANTEC	"	STANTEC GEOMATICS LTD.
PL	"	PLAN 4R-31909
P1	"	PLAN 4R-34297
FWW	"	FAIRHALL, MOFFATT & WOODLAND LIMITED
647	"	H. R. FARLEY, OLS
818	"	J. R. HILEY, OLS
1326	"	W. R. TAGGART, OLS
○	UP	UTILITY POLE

— OHW — OHW — OHW —  
OVERHEAD WIRE

OBSERVED REFERENCE POINTS DERIVED FROM THE CAN-NET VRS NETWORK GPS OBSERVATIONS ON NCC HORIZONTAL CONTROL MONUMENTS 19773035 AND 19680191, CENTRAL MERIDIAN, 76°30' WEST LONGITUDE MTM ZONE 9, NAD83 (ORIGINAL).  
COORDINATES TO URBAN ACCURACY PER SEC 14(2) OF O. REG. 216/10

POINT ID	NORTHING	EASTING
Ⓐ	5027022.75	348410.50
Ⓑ	5026877.13	348546.40

COORDINATES CANNOT, IN THEMSELVES, BE USED TO RE-ESTABLISH CORNERS OR BOUNDARIES SHOWN ON THIS PLAN.

SURVEYOR'S CERTIFICATE

- I CERTIFY THAT:
- THIS SURVEY AND PLAN ARE CORRECT AND IN ACCORDANCE WITH THE SURVEYS ACT, THE SURVEYORS ACT AND THE LAND TITLES ACT AND THE REGULATIONS MADE UNDER THEM.
  - THE SURVEY WAS COMPLETED ON THE DAY OF MARCH 17, 2023.

March 20, 2023

DATE

R. G. BENNETT  
ONTARIO LAND SURVEYOR

THIS PLAN OF SURVEY RELATES TO AOLS PLAN SUBMISSION FORM NUMBER V-39320.

**Stantec Geomatics Ltd.**  
CANADA LANDS SURVEYORS  
ONTARIO LAND SURVEYORS  
1331 GUYDE AVENUE, SUITE 400  
OTTAWA, ONTARIO, K2C 3G4  
TEL. 613.722.4420  
stantec.com

DRAWN: RG    CHECKED: CT    PM: CT    FIELD: AW    PROJECT No.: 161614368-214