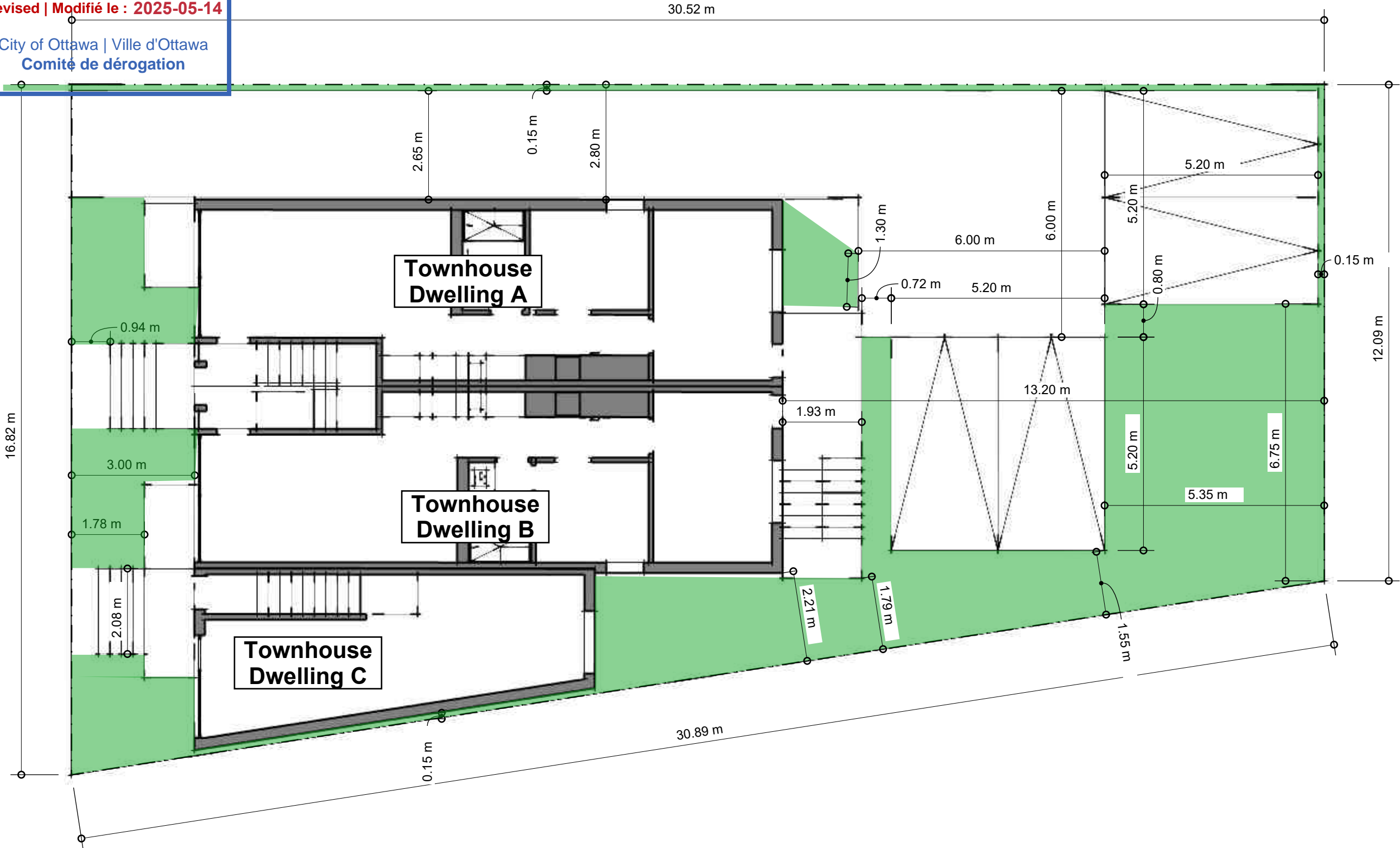



Committee of Adjustment
Received | Reçu le
Revised | Modifié le : 2025-05-14
City of Ottawa | Ville d'Ottawa
Comité de dérogation





THIS DOCUMENT
CONTAINS
CONFIDENTIAL AND
PROPRIETARY
INFORMATION THAT
CANNOT
BE REPRODUCED OR
DIVULGED, IN WHOLE
OR IN PART, WITHOUT
WRITTEN
AUTHORIZATION
FROM Modulink

Copyright registration

Modulink & Design
Planning & Design
51 Rothwell Drive
Ottawa, On
K1J 7G7

CLIENT

PROJECT 81 Burland Ave

ISSUE C.J

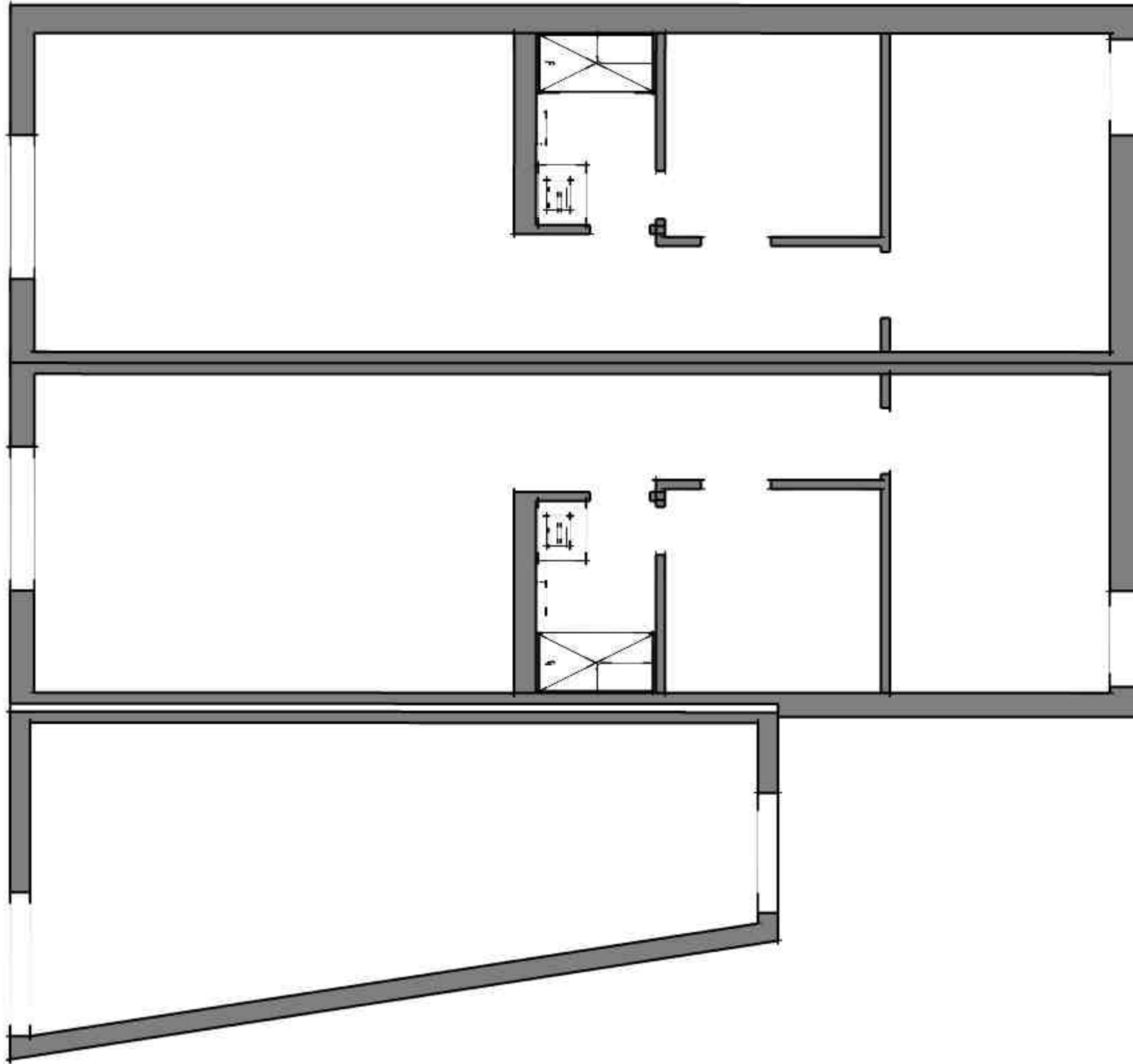
DRAWN BY C.J

PROJECT NO. 2024

Scale 1 : 100

May 14, 2025
Site Plan

A.01



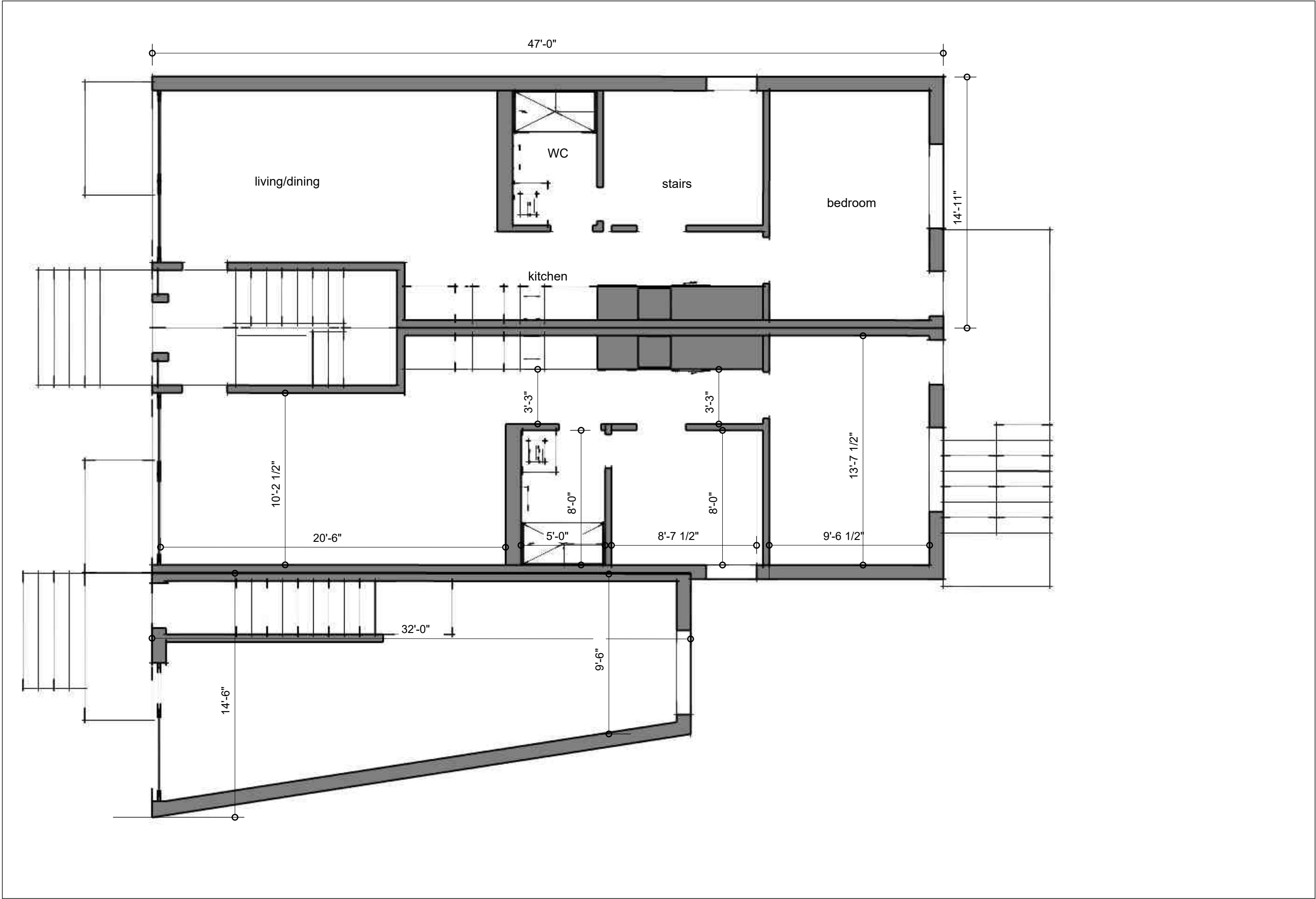
May 14, 2025
Basement

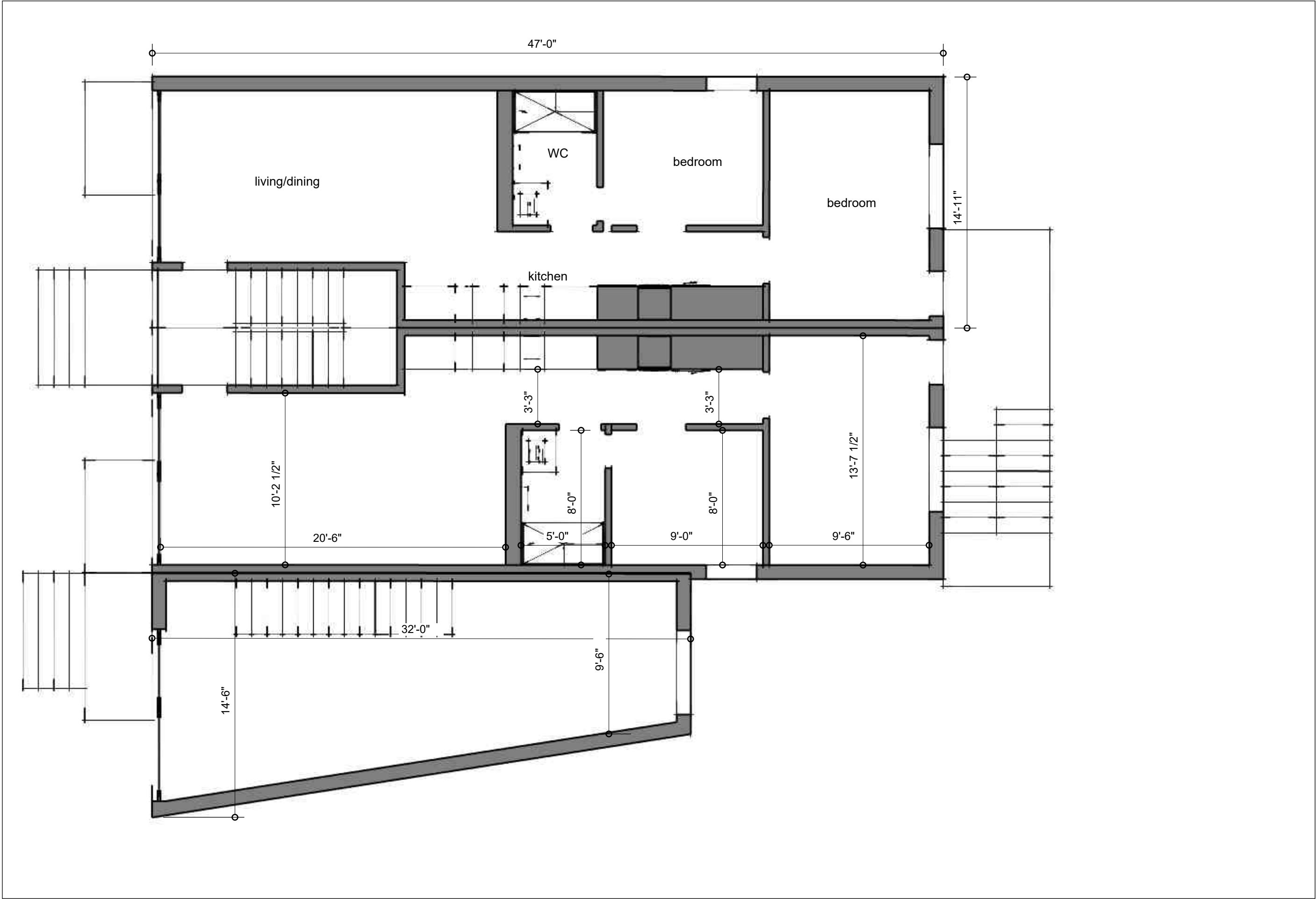
ISSUE
PROJECT
81 Burland Ave
DRAWN BY
CJ
PROJECT NO.
2024

CLIENT
Scale
3/16" = 1'0"

Modulink
Planning & Design
51 Rothwell Drive
Ottawa, On
K1J 7G7

THIS DOCUMENT
CONTAINS
CONFIDENTIAL AND
PROPRIETARY
INFORMATION THAT
CANNOT
BE REPRODUCED OR
DIVULGED, IN WHOLE
OR IN PART, WITHOUT
WRITTEN
AUTHORIZATION
FROM Modulink
Copyright registration





May 14, 2025

2cd FI

ISSUE

DRAWN BY

CJ

PROJECT

81 Burland Ave

CLIENT

Scale 3/16" = 1'0"

Modulink Planning & Design

51 Rothwell Drive

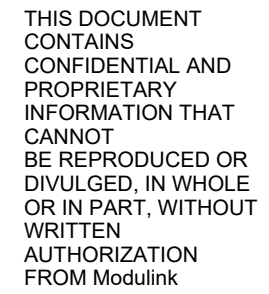
Ottawa, On

K1J 7G7

THIS DOCUMENT CONTAINS CONFIDENTIAL AND PROPRIETARY INFORMATION THAT CANNOT BE REPRODUCED OR DIVULGED, IN WHOLE OR IN PART, WITHOUT WRITTEN AUTHORIZATION FROM Modulink

Copyright registration

M



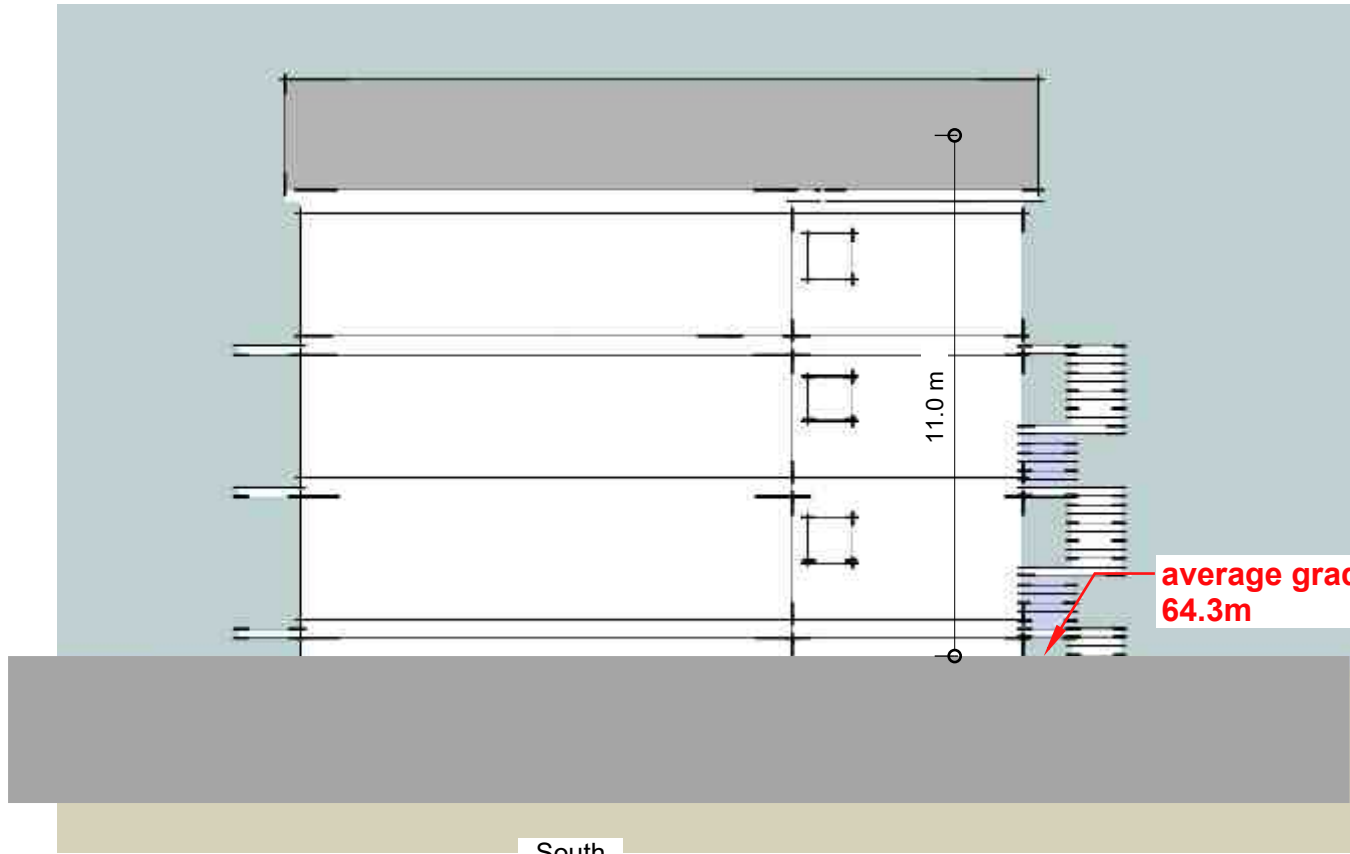
**Modulink
Planning & Design**
51 Rothwell Drive
Ottawa, On
K1J 7G7

Scale
3/16" = 1'0"

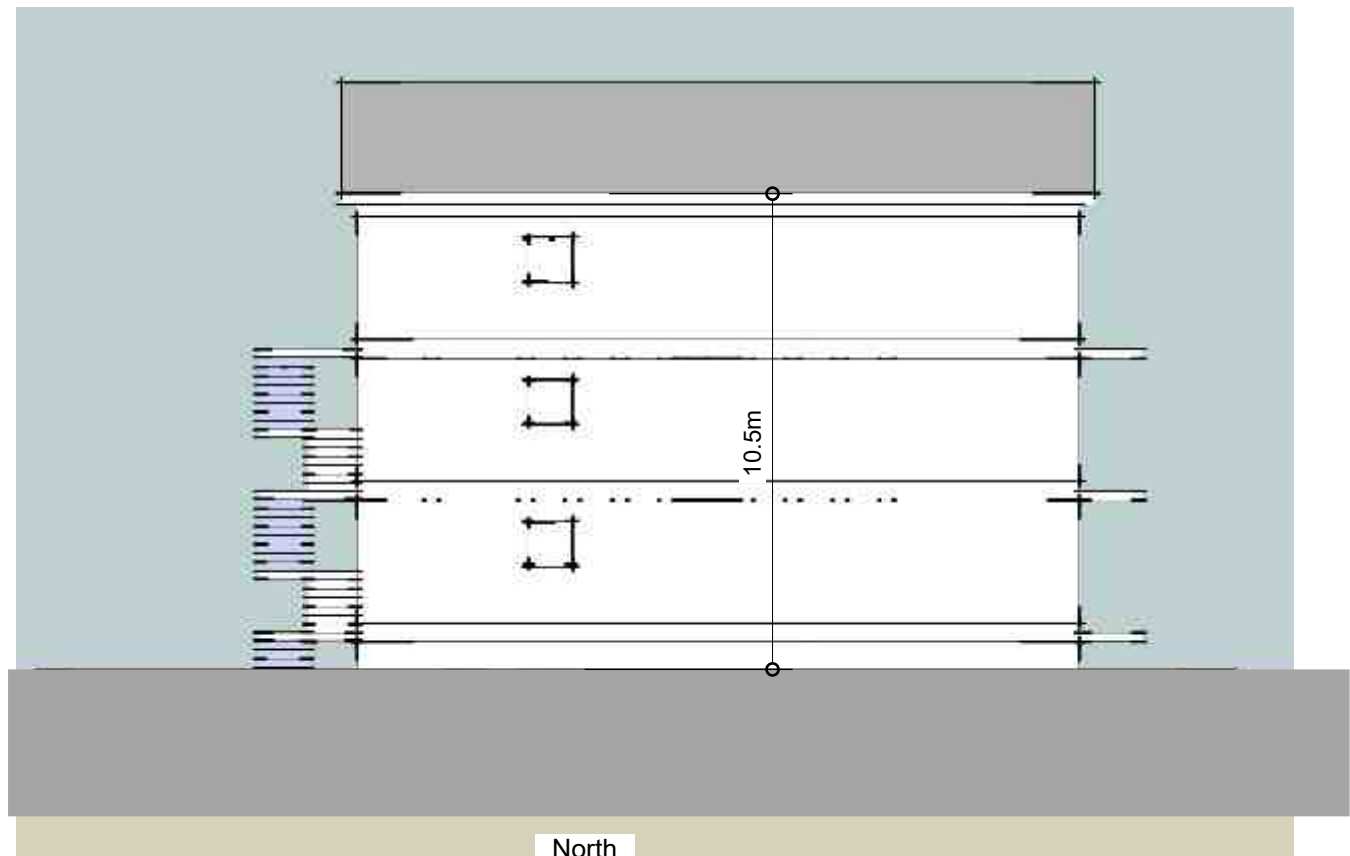
DRAWN BY
CJ

PROJECT NO.
2024

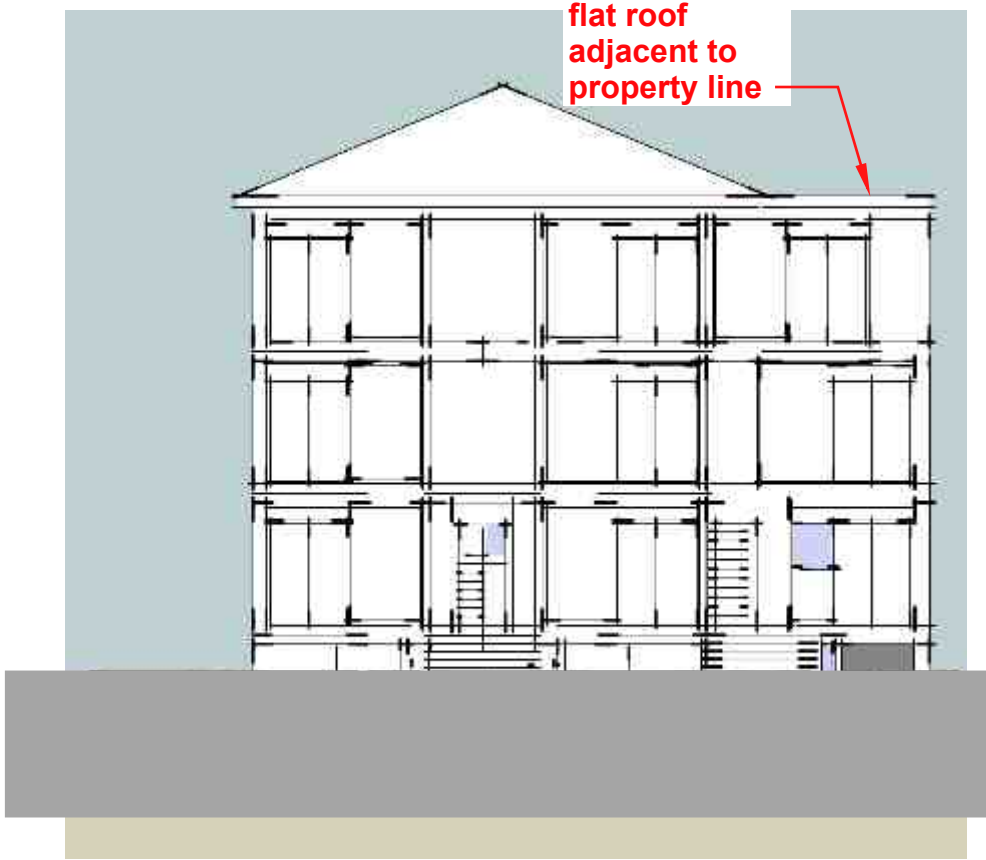
A.05



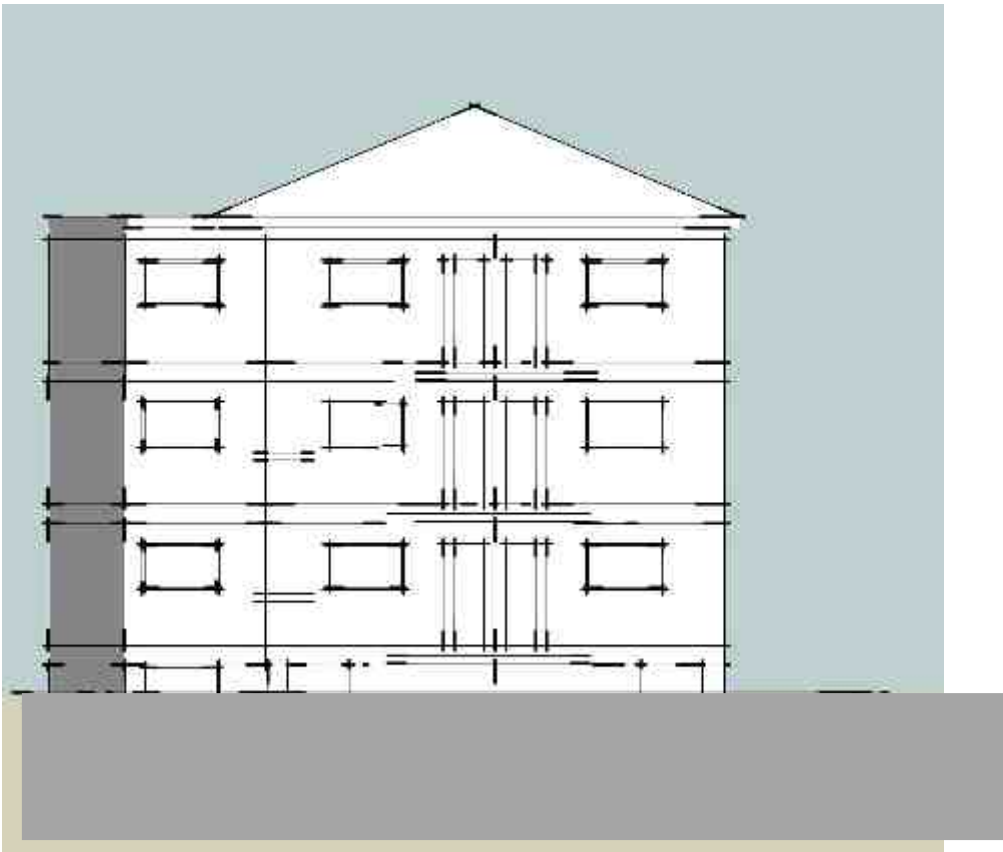
South



North



West



East



THIS DOCUMENT
CONTAINS
CONFIDENTIAL AND
PROPRIETARY
INFORMATION THAT
CANNOT
BE REPRODUCED OR
DIVULGED, IN WHOLE
OR IN PART, WITHOUT
WRITTEN
AUTHORIZATION
FROM Modulink

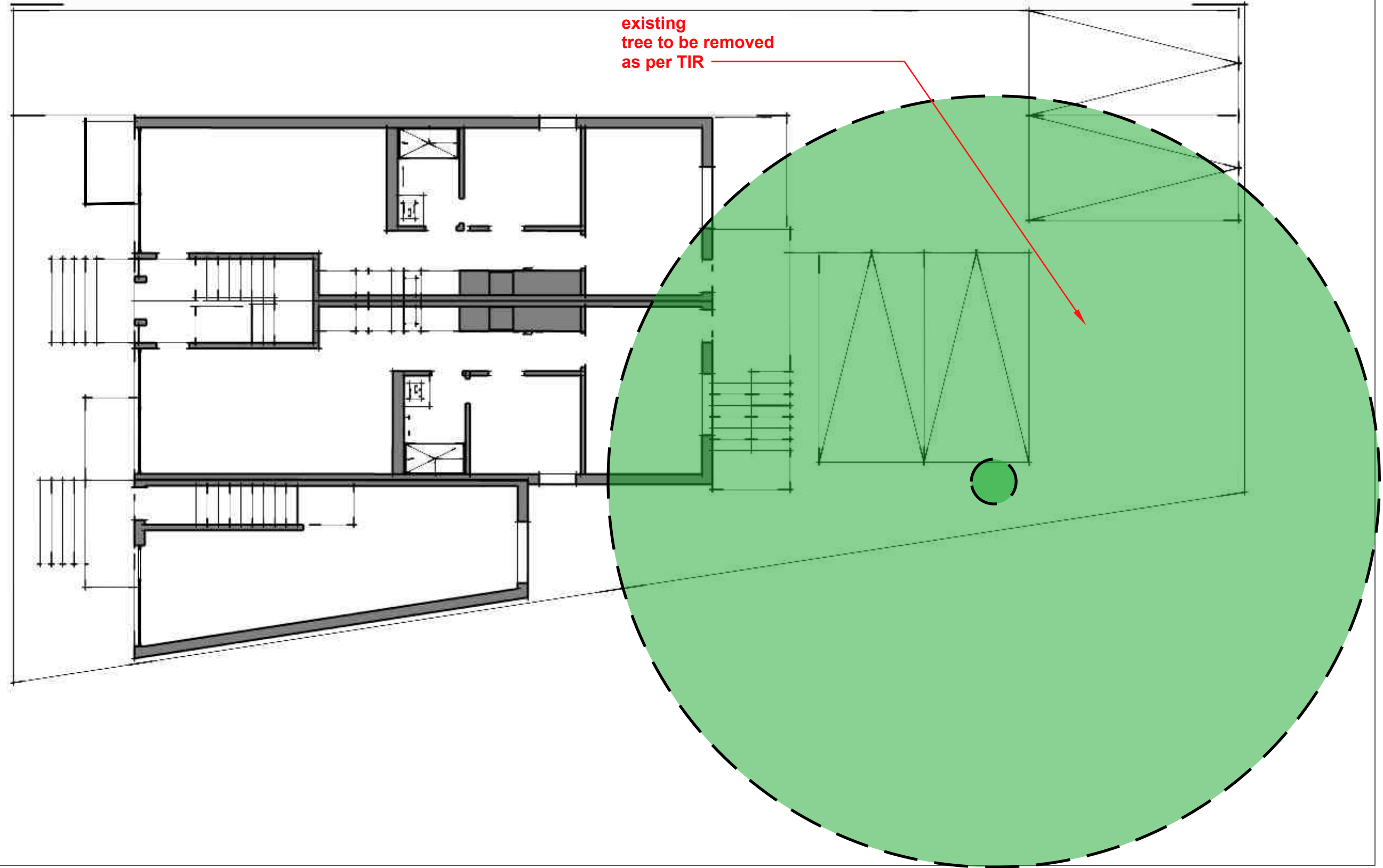
Copyright registration

Modulink & Design
Planning & Design
51 Rothwell Drive
Ottawa, On
K1J 7G7

CLIENT
Scale
1 : 150

PROJECT 81 Burland Ave
ISSUE
DRAWN BY C.J.
PROJECT NO. 2024

May 14, 2025
Elevations



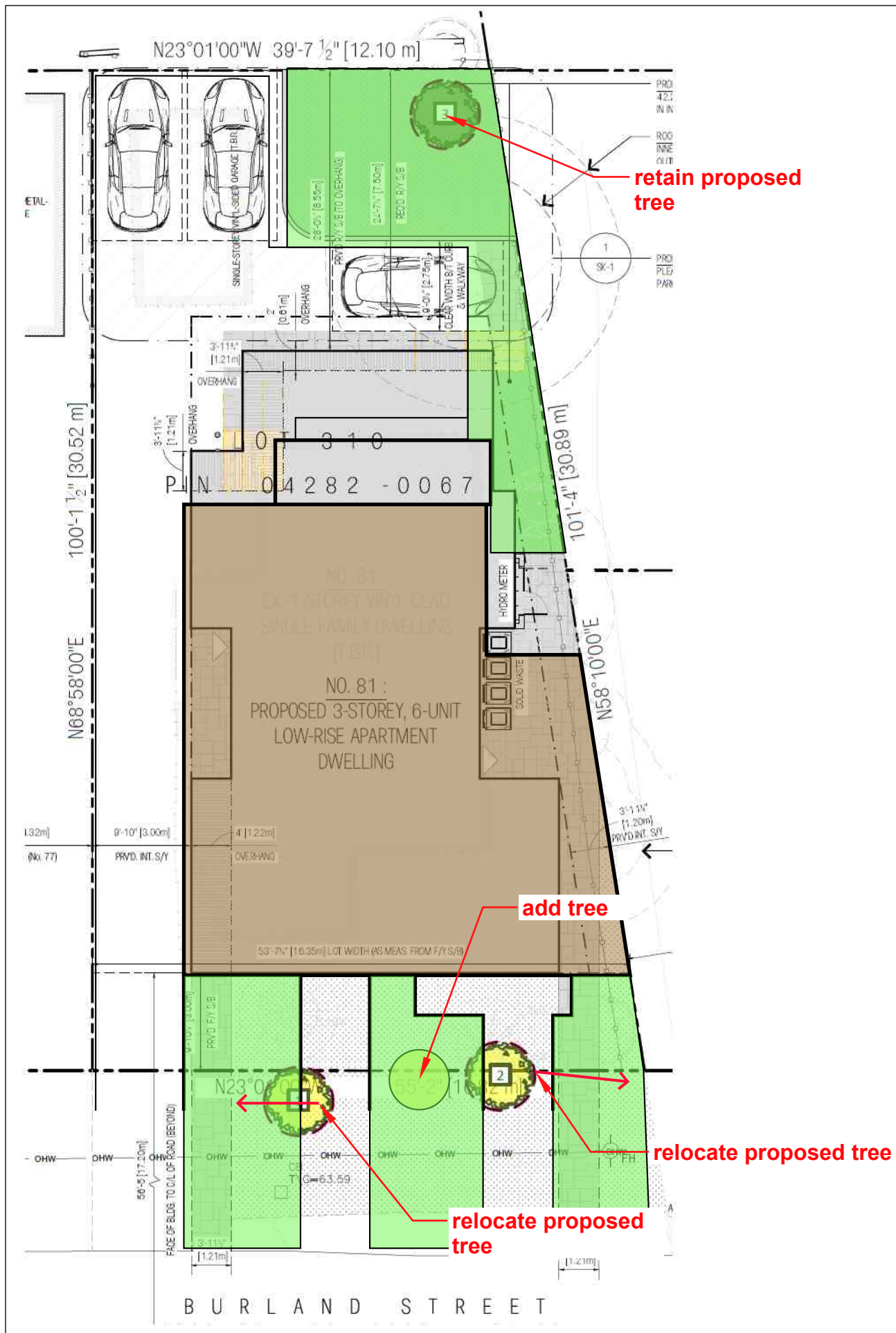
THIS DOCUMENT
CONTAINS
CONFIDENTIAL AND
PROPRIETARY
INFORMATION THAT
CANNOT
BE REPRODUCED OR
DIVULGED, IN WHOLE
OR IN PART, WITHOUT
WRITTEN
AUTHORIZATION
FROM Modulink

Copyright registration

Modulink & Design
51 Rothwell Drive
Ottawa, On
K1J 7G7

ISSUE	PROJECT	CLIENT
DRAWN BY	81 Burland Ave	
CJ		Scale
	PROJECT NO.	1 : 100
	2024	

May 14, 2025
TIR



Replacement Tree Specifications

Note: Proposed tree locations are suggestions only and should be finalized only once construction is complete and should adhere to City of Ottawa Tree Planting Guidelines.

Trees 1 and 2 should be medium trees at maturity to accommodate the overhead wires. Site conditions are expected to be full light exposure and mimial to moderate moisture availability. Species suggestions include:

- Paper birch - *Betula papyrifera**
- Honey locust - *Gleditsia triacanthos**
- Sour cherry - *Prunus cerasus*
- Littleleaf linden - *Tilia cordata*
- Burr oak - *Quercus macrocarpa**
- Prospector elm - *Ulmus x wilsoniana**
- Shagbark hickory - *Carya ovata**
- Bitternut hickory - *Carya cordiformis**
- Turkish hazel - *Corylus colurna**
- Red maple - *Acer rubrum**

Tree 3 should be a large tree at maturity. Site conditions are expected to be full light exposure and moderate moisture availability. Species suggestions include:

- Freeman maple - *Acer x freemanii*
- Silver maple - *Acer saccharinum**
- Colorado spruce - *Picea pungens*
- White spruce - *Picea glauca**
- Tulip tree - *Liriodendron tulipifera*
- Ginkgo - *Ginkgo biloba*
- Liberty elm - *Ulmus americana 'Libertas'**
- Red oak - *Quercus rubra**
- Norway spruce - *Picea abies*
- Northern catalpa - *Catalpa speciosa*
- Black walnut - *Juglans nigra**
- London plane tree - *Platanus x acerifolia*

*Native to Ottawa region: Planting species native to a region can help maintain and enhance biodiversity.

Note: Norway maple (*Acer platanoides*) is *not* recommended as it is highly invasive and not a suitable tree for urban planting.

The species recommended herein are the most suitable species based on the existing plans. For best success, tree species should be matched to site conditions.

All deciduous trees must be a minimum of 50 mm in diameter measured no less than 15 cm above ground level. Coniferous trees must be no less than 200 cm in height.