

TOPOGRAPHIC PLAN OF SURVEY OF  
LOT 29  
REGISTERED PLAN 36228  
CITY OF OTTAWA  
MONUMENT-URSO SURVEYING LTD.

SCALE 1 : 150

METRIC  
DISTANCES SHOWN ON THIS PLAN ARE IN METRES AND CAN BE  
CONVERTED TO FEET BY DIVIDING BY 0.3048.

SURVEYOR'S CERTIFICATE

- I CERTIFY THAT:
- THIS SURVEY AND PLAN ARE CORRECT AND IN ACCORDANCE WITH THE SURVEYS ACT, THE SURVEYORS ACT, AND THE REGULATIONS MADE UNDER THEM.
  - THE SURVEY WAS COMPLETED ON THE 24TH DAY OF MARCH, 2025.

APRIL 15, 2025  
DATE  
J.E. ANDERSON  
ONTARIO LAND SURVEYOR

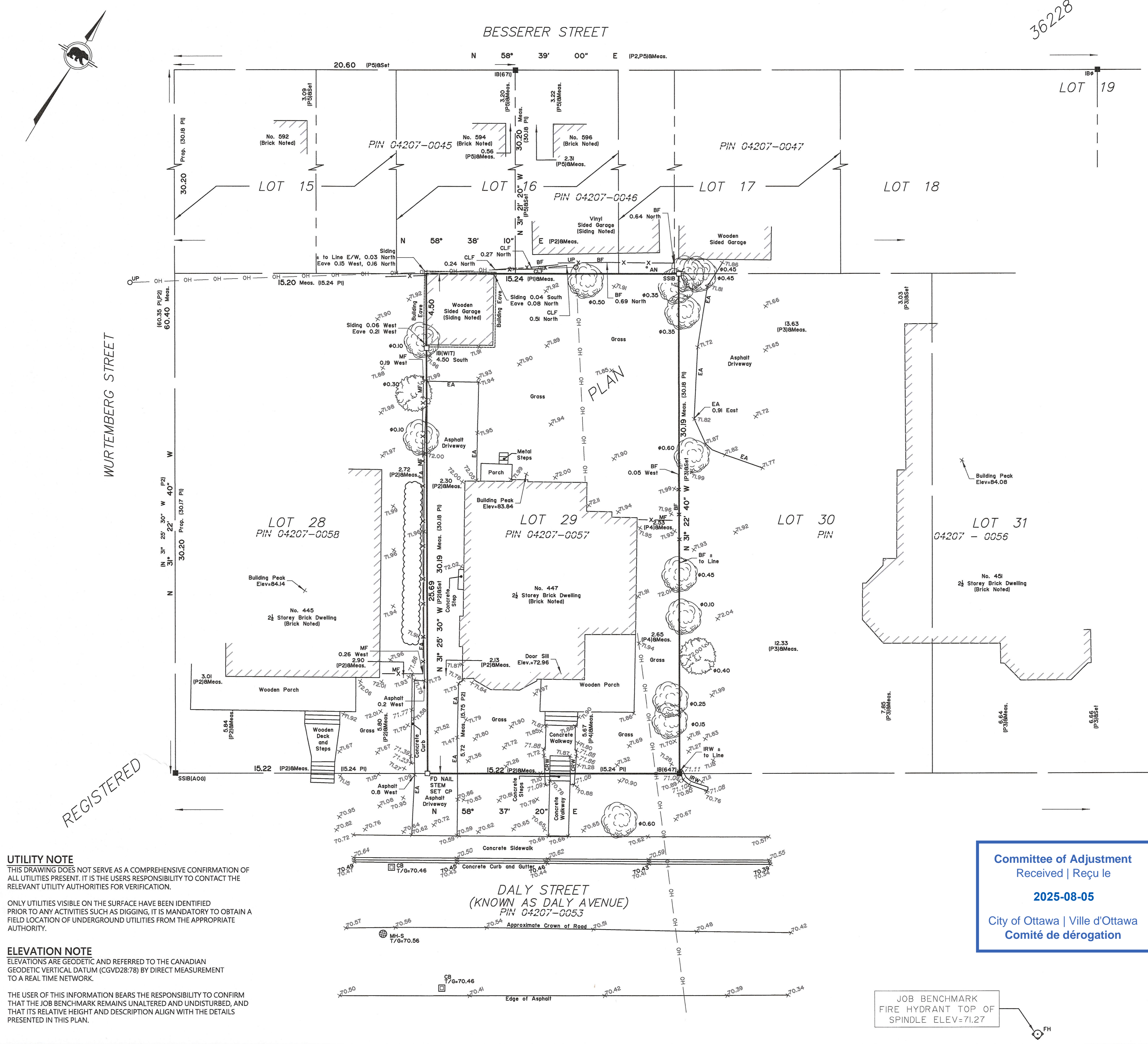
LEGEND

DENOTES	FOUND SURVEY MONUMENT
■	PLANTED SURVEY MONUMENT
IB	IRON BAR
SIB	STANDARD IRON BAR
SSIB	SHORT STANDARD IRON BAR
PB	PLASTIC BAR
IBØ	ROUND IRON BAR
(WIT)	WITNESS
ACC.	ACCEPTED
MEAS.	MEASURED
(1476)	MONUMENT-URSO SURVEYING LTD.
(P1)	REGISTERED PLAN 36228
(P2)	(AOG) PLAN DATED JANUARY 10, 1991
(P3)	(1287) PLAN DATED DECEMBER 7, 2001
(P4)	(647) PLAN DATED APRIL 20, 1976
(P5)	(671) PLAN DATED AUGUST 13, 1986
FD	FOUND
MF	METAL FENCE
CLF	CHAIN LINK FENCE
BF	BOARD FENCE
IRW	INTERLOCK RETAINING WALL
AN	ANCHOR
CB	CATCH BASIN
UP	UTILITY POLE
Ø	DIAMETER
☉	DECIDUOUS TREE
☼	CONIFEROUS TREE

BEARING NOTES

BEARINGS ARE MTM GRID, DERIVED FROM SMART-NET GPS OBSERVATIONS AND ARE REFERRED TO THE CENTRAL MERIDIAN 76°30' WEST LONGITUDE OF MTM ZONE 9 NAD83 (CSRS) (2010.0).

FOR BEARING COMPARISONS A ROTATION OF 0°2'20" COUNTER-CLOCKWISE WAS APPLIED TO PLANS P2, P5 AND A ROTATION OF 0°3'00" COUNTER-CLOCKWISE WAS APPLIED TO PLAN P3 TO CONVERT TO GRID BEARINGS.



**UTILITY NOTE**  
THIS DRAWING DOES NOT SERVE AS A COMPREHENSIVE CONFIRMATION OF ALL UTILITIES PRESENT. IT IS THE USER'S RESPONSIBILITY TO CONTACT THE RELEVANT UTILITY AUTHORITIES FOR VERIFICATION.

ONLY UTILITIES VISIBLE ON THE SURFACE HAVE BEEN IDENTIFIED PRIOR TO ANY ACTIVITIES SUCH AS DIGGING. IT IS MANDATORY TO OBTAIN A FIELD LOCATION OF UNDERGROUND UTILITIES FROM THE APPROPRIATE AUTHORITY.

**ELEVATION NOTE**  
ELEVATIONS ARE GEODETIC AND REFERRED TO THE CANADIAN GEODETIC VERTICAL DATUM (CGVD2878) BY DIRECT MEASUREMENT TO A REAL TIME NETWORK.

THE USER OF THIS INFORMATION BEARS THE RESPONSIBILITY TO CONFIRM THAT THE JOB BENCHMARK REMAINS UNALTERED AND UNDISTURBED, AND THAT ITS RELATIVE HEIGHT AND DESCRIPTION ALIGN WITH THE DETAILS PRESENTED IN THIS PLAN.

Committee of Adjustment  
Received | Reçu le  
2025-08-05  
City of Ottawa | Ville d'Ottawa  
Comité de dérogation

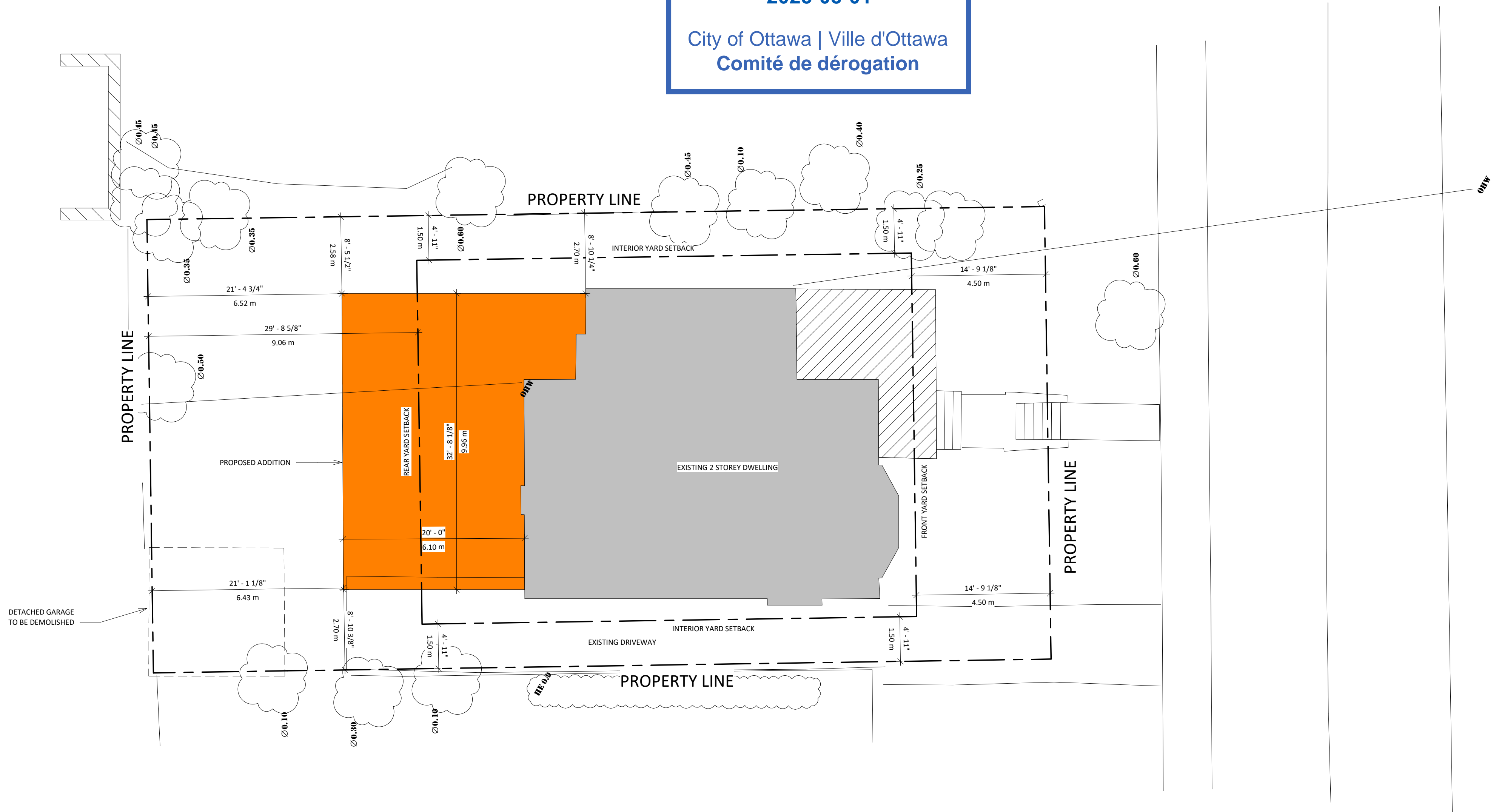
ASSOCIATION OF ONTARIO  
LAND SURVEYORS  
PLAN SUBMISSION FORM  
V-93199  
THIS PLAN IS NOT VALID  
UNLESS IT IS AN EMBOSSED  
ORIGINAL COPY  
ISSUED BY THE SURVEYOR  
IN ACCORDANCE WITH  
REGULATION 1026, Section 29(3).

© MONUMENT-URSO SURVEYING LTD., 2024. "THIS PLAN IS PROTECTED BY COPYRIGHT"  
Monument-Urso Surveying Ltd.  
Ontario Land Surveyors | Canada Land Surveyors  
1755 WOODWARD DRIVE, SUITE 300  
OTTAWA, ON K2C 0P9  
536 "C" FOURTH LINE EAST  
SAULT STE. MARIE ON, P6A 6J8  
TEL: (613) 800-1583  
TEL: (705) 254-7851  
FAX: (705) 254-5571  
DRAWN: JA  
FIELD: JC/RA  
FILE NO: 25-0254 L29 RP36228 Vieira POS D1  
PROCESSED: JA  
CHECKED: JA

JOB BENCHMARK  
FIRE HYDRANT TOP OF  
SPINDLE ELEV=71.27



Committee of Adjustment  
Received | Reçu le  
  
2025-08-01  
  
City of Ottawa | Ville d'Ottawa  
Comité de dérogation



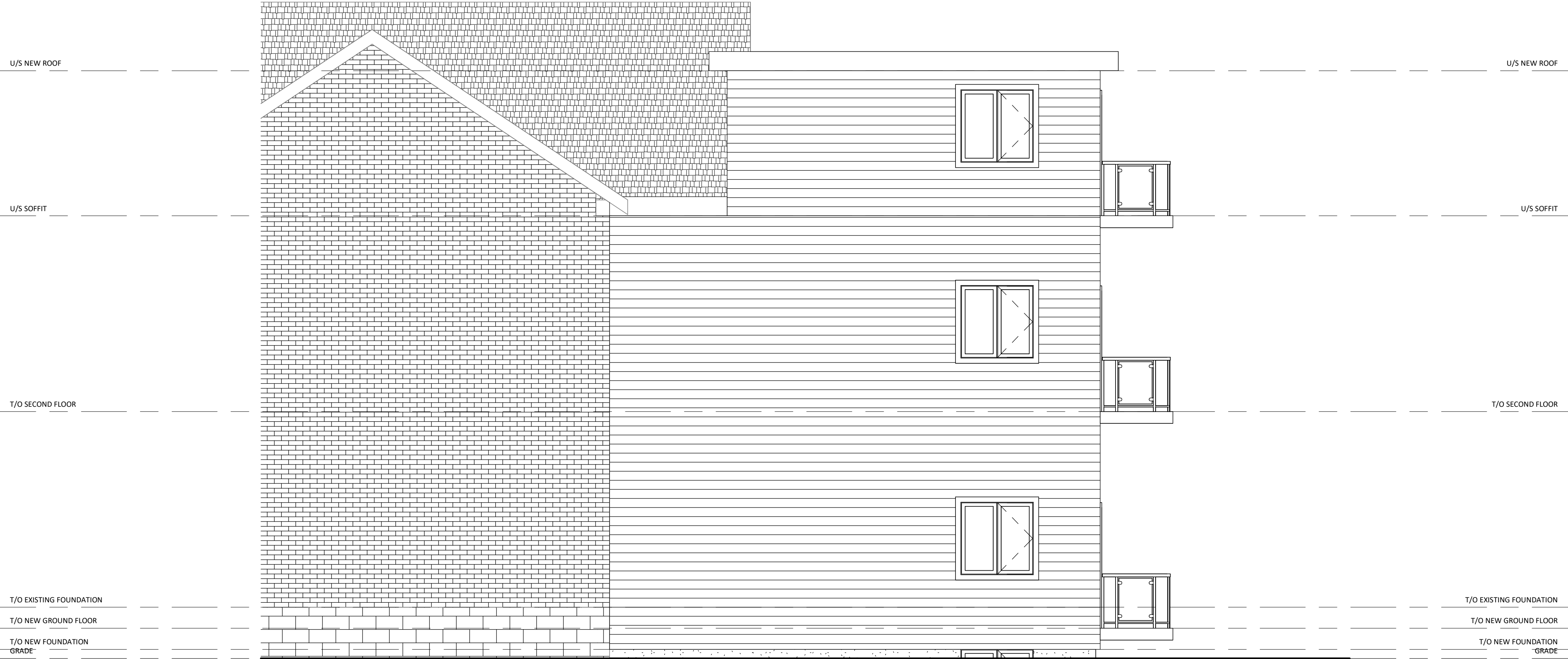
01	ISSUED TO CLIENT				
NO.	DESCRIPTION	DD/MM/YYYY	NO.	DESCRIPTION	DD/MM/YYYY

Committee of Adjustment  
Received | Reçu le  
  
2025-08-01  
  
City of Ottawa | Ville d'Ottawa  
Comité de dérogation



1 PROPOSED NORTH ELEVATION  
1/4" = 1'-0"

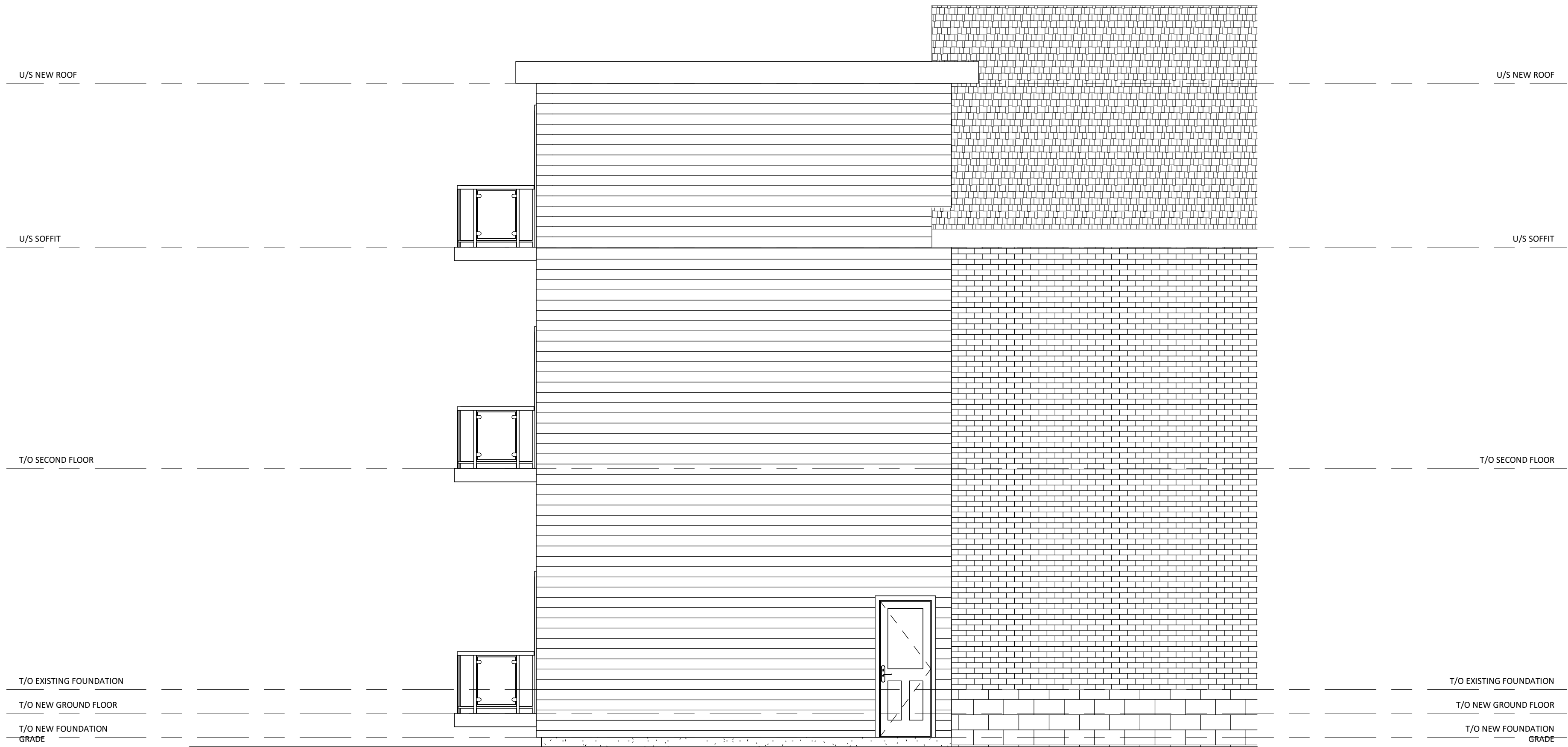
01	ISSUED TO CLIENT				
NO.	DESCRIPTION	DD/MM/YYYY	NO.	DESCRIPTION	DD/MM/YYYY



1

PROPOSED EAST ELEVATION

1/4" = 1'-0"



1

PROPOSED WEST ELEVATION

1/4" = 1'-0"

01	ISSUED TO CLIENT				
NO.	DESCRIPTION	DD/MM/YYYY	NO.	DESCRIPTION	DD/MM/YYYY

COPYRIGHT OF DRAWINGS:

THIS DRAWING SHALL NOT BE USED OR COPIED  
WITHOUT THE AUTHORIZATION OF MATT DORSEY  
DESIGN INC.

THIS DRAWING SHALL NOT BE USED FOR PERMIT  
OR CONSTRUCTION

SHEET NO.

A-9