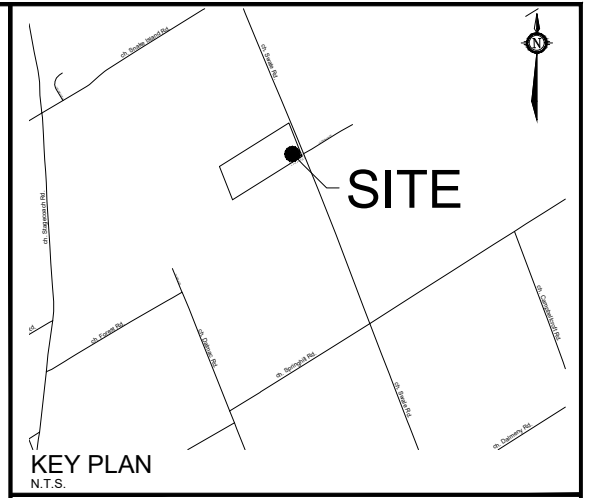
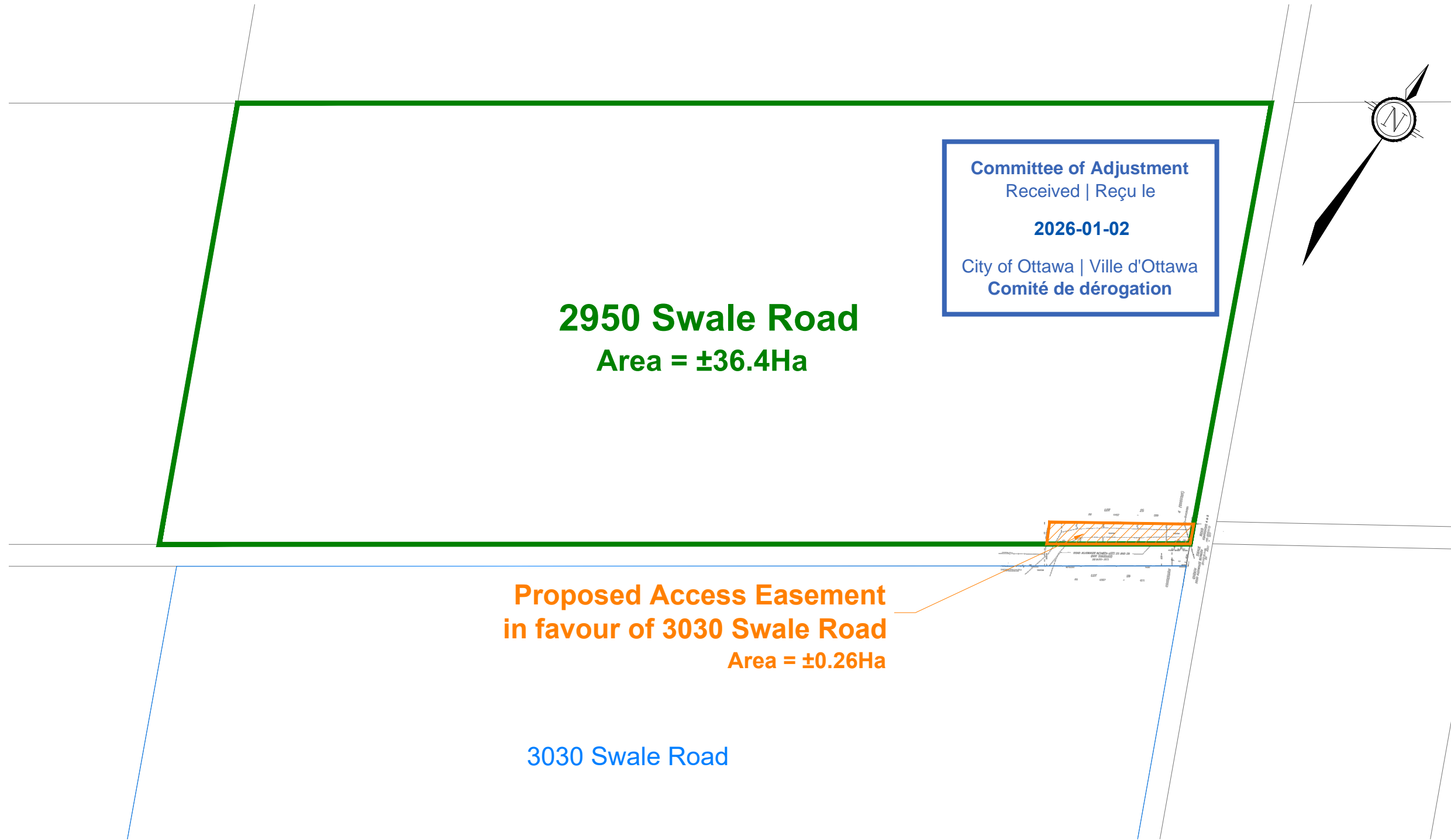


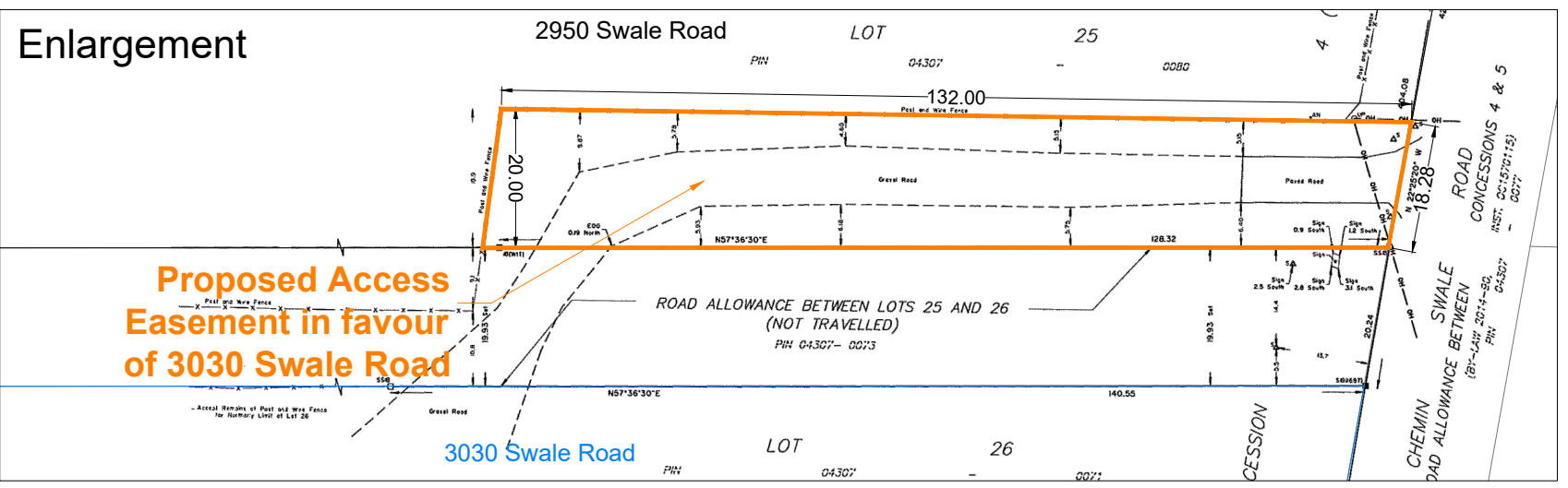
M:\2025\125127\CAD\Planning\Figures\125127-SEV.dwg, SEV1, Nov 18, 2025 - 1:59pm, wslloss



CONSENT APPLICATION

2950 SWALE ROAD

PART OF LOT 5,
CONCESSION 4;
Geographic Township of Osgoode
CITY OF OTTAWA



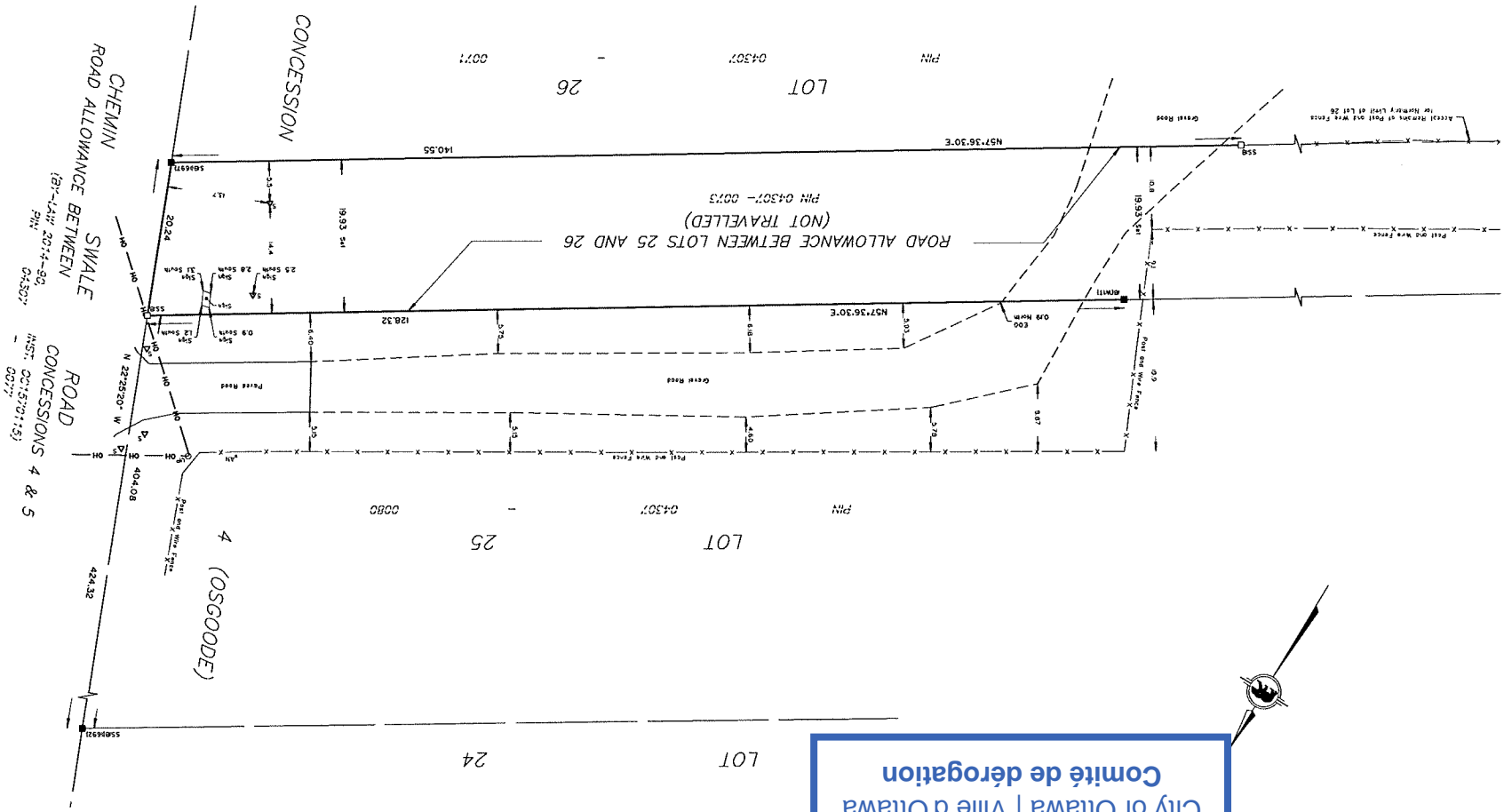
1 : 4,000

No.	REVISION	DATE	BY
1.	ISSUED FOR CONSENT APPLICATION	DEC 08/25	DR

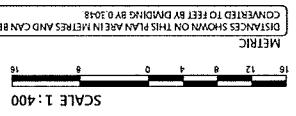
NOVATECH
Engineers, Planners & Landscape Architects
Suite 200, 240 Michael Cowpland Drive
Ottawa, Ontario, Canada K2M 1P6
Telephone (613) 254-9643
Facsimile (613) 254-5867
Website www.novatech-eng.com

ISSUED
DECEMBER, 2025
PROJECT No.
125127
DRAWING No.
125127-SEV

Committee of Adjustment
 Received | Reçu le
2026-01-02
 City of Ottawa | Ville d'Ottawa
 Comité de dérogation



PLAN OF SURVEY OF
 PART OF THE ROAD ALLOWANCE
 BETWEEN LOTS 25 AND 26
 CONCESSION 4
 GEOGRAPHIC TOWNSHIP OF OSGODE
 CITY OF OTTAWA
 MONUMENT-URSO SURVEYING LTD.



SURVEYOR'S CERTIFICATE
 I CERTIFY THAT:
 1. THIS SURVEY AND PLAN ARE CORRECT AND IN ACCORDANCE WITH THE
 SURVEY ACT, THE SURVEYORS ACT, AND THE REGULATIONS MADE
 UNDER THEM.
 2. THE SURVEY WAS COMPLETED ON THE 23RD DAY OF JULY, 2025.
 DATE: July 23, 2025
 ONTARIO LAND SURVEYOR
 STEFAN BAZAR

LEGEND

■	DENOTES	FOUND SURVEY MONUMENT
□		PLANTED SURVEY MONUMENT
○		IRON BAR
○		STANDARD IRON BAR
○		SHORT STANDARD IRON BAR
○		STANDARD ROUND IRON BAR
○		WITNESSES
○		ACC. ACCEPTED
○		MEASURED
○		STRAIRED
○		(1470)
○		MONUMENT-URSO SURVEYING LTD.
○		PLAN 48-16026
○		PLAN 58-1605
○		(P2)
○		EDGE OF GRAVEL
○		POST AND WIRE FENCE
○		UTILITY POLE
○		ANCHOR
○		SMH
○		ΔS
○		OVERHEAD WIRES

BEARING NOTES
 BEARINGS ARE N-TM GRID, DERIVED FROM SMART-NET REAL-TIME NETWORK
 GPS OBSERVATIONS AND ARE REFERRED TO THE CENTRAL MERIDIAN
 75° WEST LONGITUDE OF N-TM ZONE 9 NAD83 (CSRS2010).



Monument-Urso Surveying Ltd.
 Ontario Land Surveyors | Canada Land Surveyors
 1750 KENNEDY ROAD, SUITE 100
 MISSISSAUGA, ONTARIO L4X 1L3
 TEL: (905) 274-1511
 FAX: (905) 274-1512
 WWW.MONUMENT-URSO.COM