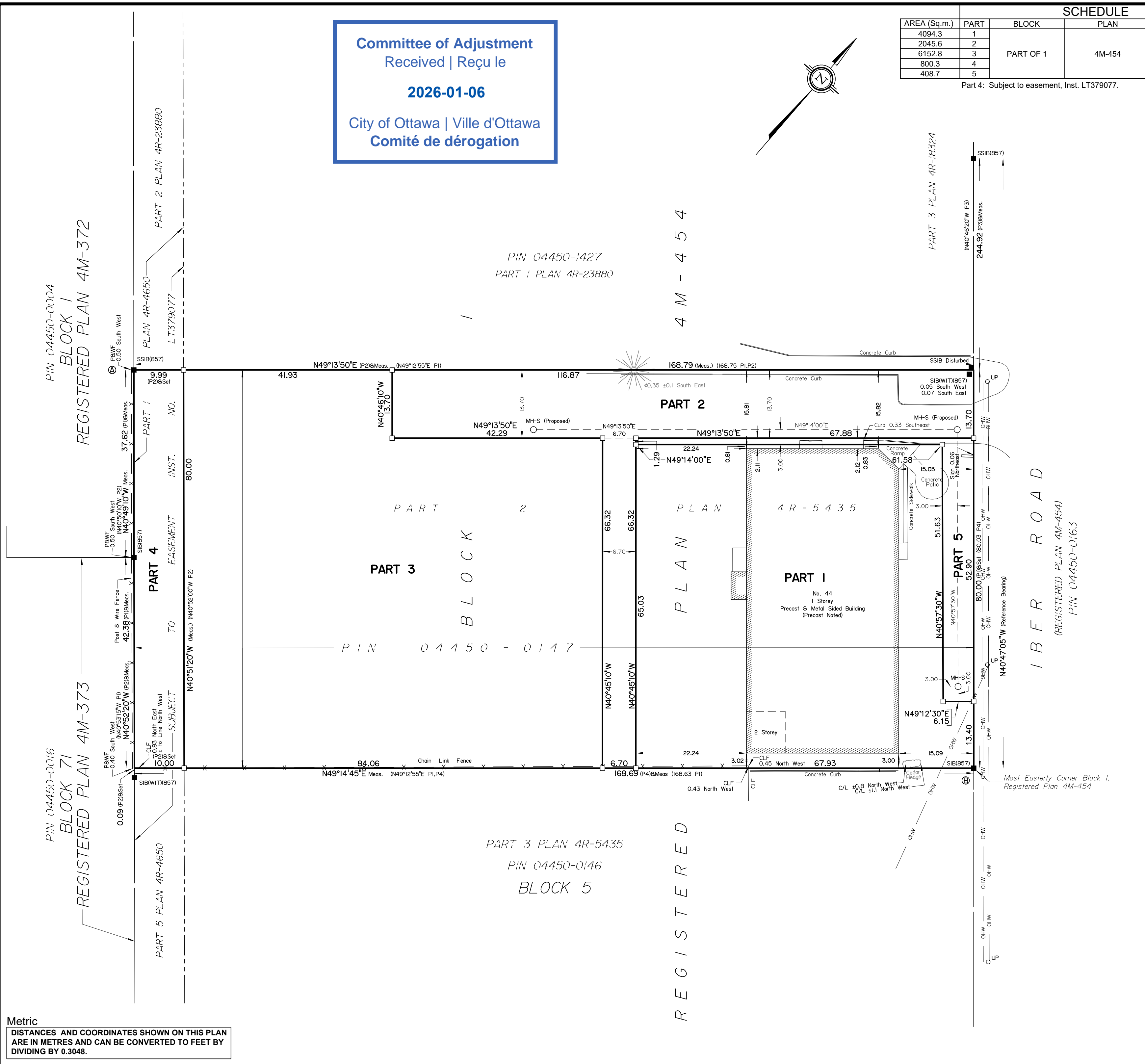


**Committee of Adjustment**  
 Received | Reçu le  
**2026-01-06**  
 City of Ottawa | Ville d'Ottawa  
 Comité de dérogation

SCHEDULE				
AREA (Sq.m.)	PART	BLOCK	PLAN	PIN
4094.3	1	PART OF 1	4M-454	ALL OF 04450-0147
2045.6	2			
6152.8	3			
800.3	4			
408.7	5			

Part 4: Subject to easement, Inst. LT379077.



**DRAFT PLAN OF SURVEY OF**  
**PART OF BLOCK 1,**  
**REGISTERED PLAN 4M-454**  
**CITY OF OTTAWA**  
 Surveyed by Annis, O'Sullivan, Vollebakk Ltd.

Scale 1 : 500  
  
 The intended plot size of the plan is 610 mm in width by 457 mm in height when plotted at a scale of 1:500.

**Surveyor's Certificate**  
 I CERTIFY THAT :  
 1. This survey and plan are correct and in accordance with the Surveys Act, the Surveyors Act and the Land Titles Act and the regulations made under them.  
 2. The survey was completed on the \_\_\_ day of \_\_\_\_\_, 2025.

Date \_\_\_\_\_  
 Andrew Handspiker  
 Ontario Land Surveyor

This plan of survey relates to AOLS Plan Submission Form Number V-

- Notes & Legend**
- Denotes Survey Monument Planted
  - Survey Monument Found
  - SIB Standard Iron Bar
  - SSIB Short Standard Iron Bar
  - IB Iron Bar
  - (WIT) Witness
  - (AOG) Annis, O'Sullivan, Vollebakk Ltd.
  - Meas. Measured
  - (P1) Plan 4R-5435
  - (P2) Plan 4R-23880
  - (P3) Plan 4R-18324
  - (P4) (AOG) Plan Dated June 6, 1996
  - C/L Centreline
  - CLF Chain Link Fence
  - P&W/F Post & Wire Fence
  - UP Utility Pole
  - Ø Diameter
  - o/hw Overhead Wire

Distances shown on this plan are ground distances and can be converted to grid distances by multiplying by the combined scale factor of 0.999915.

Bearings are grid, derived from Can-Net 2016 Real Time Network GPS observations on reference points A and B, shown hereon, having a bearing of N74°35'50"W and are referenced to Specified Control Points 01919750705 and 01919770923, MTM Zone 9 ( 76°30' West Longitude ) NAD-83 (original).

For bearing comparisons, a rotation of 0°27'15" counter-clockwise was applied to bearings on plans (P1) & (P4).

Coordinates are derived from Can-Net 2016 Real Time Network GPS observations referenced to Specified Control Points 01919750705 and 01919770923, MTM Zone 9 (76°30' West Longitude) NAD-83 (original).

Coordinate values are to urban accuracy in accordance with O. Reg. 216/10.

. 01919750705	Northing	5 016 816.93	Easting	360 806.84
. 01919770923	Northing	5 013 536.21	Easting	346 275.92
. Point A	Northing	5 015 711.70	Easting	351 018.10
. Point B	Northing	5 015 761.32	Easting	351 198.20

Caution: Coordinates cannot, in themselves, be used to re-establish corners or boundaries shown on this plan.

**Metric**  
 DISTANCES AND COORDINATES SHOWN ON THIS PLAN ARE IN METRES AND CAN BE CONVERTED TO FEET BY DIVIDING BY 0.3048.

**ANNIS, O'SULLIVAN, VOLLEBEKK LTD.**  
 14 Concourse Gate, Suite 500  
 Nepean, Ont. K2E 7S6  
 Phone: (613) 727-0850 / Fax: (613) 727-1079  
 Email: Nepean@novltd.com  
 Ontario Land Surveyors  
 Job No. 25215-25 Huntington Pl Blk 1 RP 4M-454 R D4