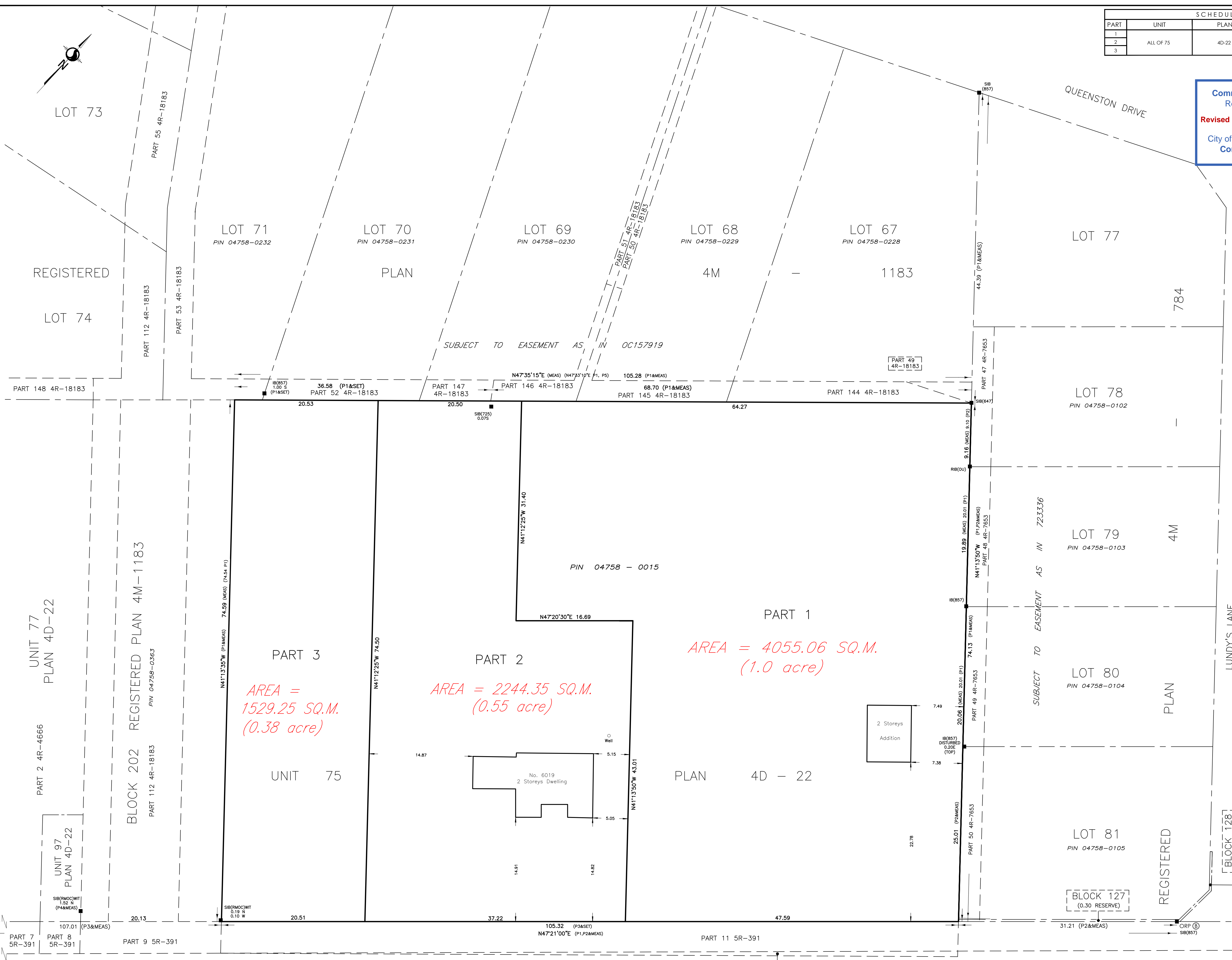


January 7, 2026  
W:\vector\161614891\reference\_data\161614891-114\_d6.dwg

SCHEDULE			
PART	UNIT	PLAN	PIN
1			
2	ALL OF 75	4D-22	ALL OF 04758-0015
3			

Committee of Adjustment  
Received | Reçu le  
Revised | Modifié le : 2026-01-08  
City of Ottawa | Ville d'Ottawa  
Comité de dérogation



PLAN OF SURVEY OF  
**UNIT 75**  
**INDEX PLAN 4D-22**  
(GEOGRAPHIC TOWNSHIP OF GOULBOURN)  
CITY OF OTTAWA  
Stantec Geomatics Ltd.

Scale 1:250

THE INTENDED PLOT SIZE OF THIS PLAN IS 91.4 mm IN WIDTH BY 610 mm IN HEIGHT WHEN PLOTTED AT A SCALE OF 1:250 m.

**METRIC CONVERSION**  
DISTANCES AND COORDINATES SHOWN ON THIS PLAN ARE IN METRES AND CAN BE CONVERTED TO FEET BY DIVIDING BY 0.3048

**GRID SCALE CONVERSION**  
DISTANCES ARE GROUND AND CAN BE CONVERTED TO GRID BY MULTIPLYING BY THE COMBINED SCALE FACTOR OF 0.99994.

**BEARING NOTE**  
BEARINGS ARE GRID, DERIVED FROM THE CAN-NET VRS NETWORK OBSERVATIONS ON NCC HORIZONTAL CONTROL MONUMENTS 19773035 AND 19680191, CENTRAL MERIDIAN, 76°30' WEST LONGITUDE MTM ZONE 9, NAD83 (ORIGINAL).

19773035 N:5006060.42 E:324888.04  
19680191 N:5033564.26 E:388064.94

**LEGEND**

SYMBOL	DENOTES	FOUND MONUMENTS
■	SET MONUMENTS	FOUND MONUMENTS
□	IRON BAR	IRON BAR
IB	ROUND IRON BAR	ROUND IRON BAR
IB4	STANDARD IRON BAR	STANDARD IRON BAR
SIB	SHORT STANDARD IRON BAR	SHORT STANDARD IRON BAR
SSIB	CUT CROSS	CUT CROSS
CC	CONCRETE PIN	CONCRETE PIN
CP	WITNESS	WITNESS
WIT	PROPERTY IDENTIFICATION NUMBER	PROPERTY IDENTIFICATION NUMBER
PIN	MEASURED	MEASURED
MEAS	ORIGIN UNKNOWN	ORIGIN UNKNOWN
OU	STANTEC GEOMATICS LTD.	STANTEC GEOMATICS LTD.
SG	REGISTERED PLAN 4M-1183	REGISTERED PLAN 4M-1183
P1	REGISTERED PLAN 4M-784	REGISTERED PLAN 4M-784
P2	PLAN SR-391	PLAN SR-391
P3	PLAN 4R-4664	PLAN 4R-4664
P4	PLAN 4R-18183	PLAN 4R-18183
P5		
ORP	OBSERVED REFERENCE POINTS	OBSERVED REFERENCE POINTS

OBSERVED REFERENCE POINTS DERIVED FROM THE CAN-NET VRS NETWORK GPS OBSERVATIONS ON NCC HORIZONTAL CONTROL MONUMENTS 19773035 AND 19680191, CENTRAL MERIDIAN, 76°30' WEST LONGITUDE MTM ZONE 9, NAD83 (ORIGINAL), COORDINATES TO URBAN ACCURACY PER SEC 14(2) OF O.REG. 216/10

POINT ID	NORTHING	EASTING
①	5006539.37	357040.59
②	5006704.40	357219.69

COORDINATES CANNOT, IN THEMSELVES, BE USED TO RE-ESTABLISH CORNERS OR BOUNDARIES SHOWN ON THIS PLAN.

**SURVEYOR'S CERTIFICATE**  
I CERTIFY THAT:  
1. THIS SURVEY AND PLAN ARE CORRECT AND IN ACCORDANCE WITH THE SURVEYS ACT, THE SURVEYORS ACT AND THE LAND TITLES ACT AND THE REGULATIONS MADE UNDER THEM.  
2. THE SURVEY WAS COMPLETED ON THE DAY OF . 2026.

DATE \_\_\_\_\_ FRANCIS LAU  
ONTARIO LAND SURVEYOR

THIS PLAN OF SURVEY RELATES TO AOLS PLAN SUBMISSION FORM NUMBER #####.

**Stantec Geomatics Ltd.**  
CANADA LANDS SURVEYORS  
ONTARIO LAND SURVEYORS  
1331 CLYDE AVENUE, SUITE 300  
OTTAWA, ONTARIO K2C 3S4  
TEL: 613.722.4420  
stantec.com

DRAWN: ME CHECKED: \* PM: FL FIELD: RJ PROJECT NO.: 161614891-114