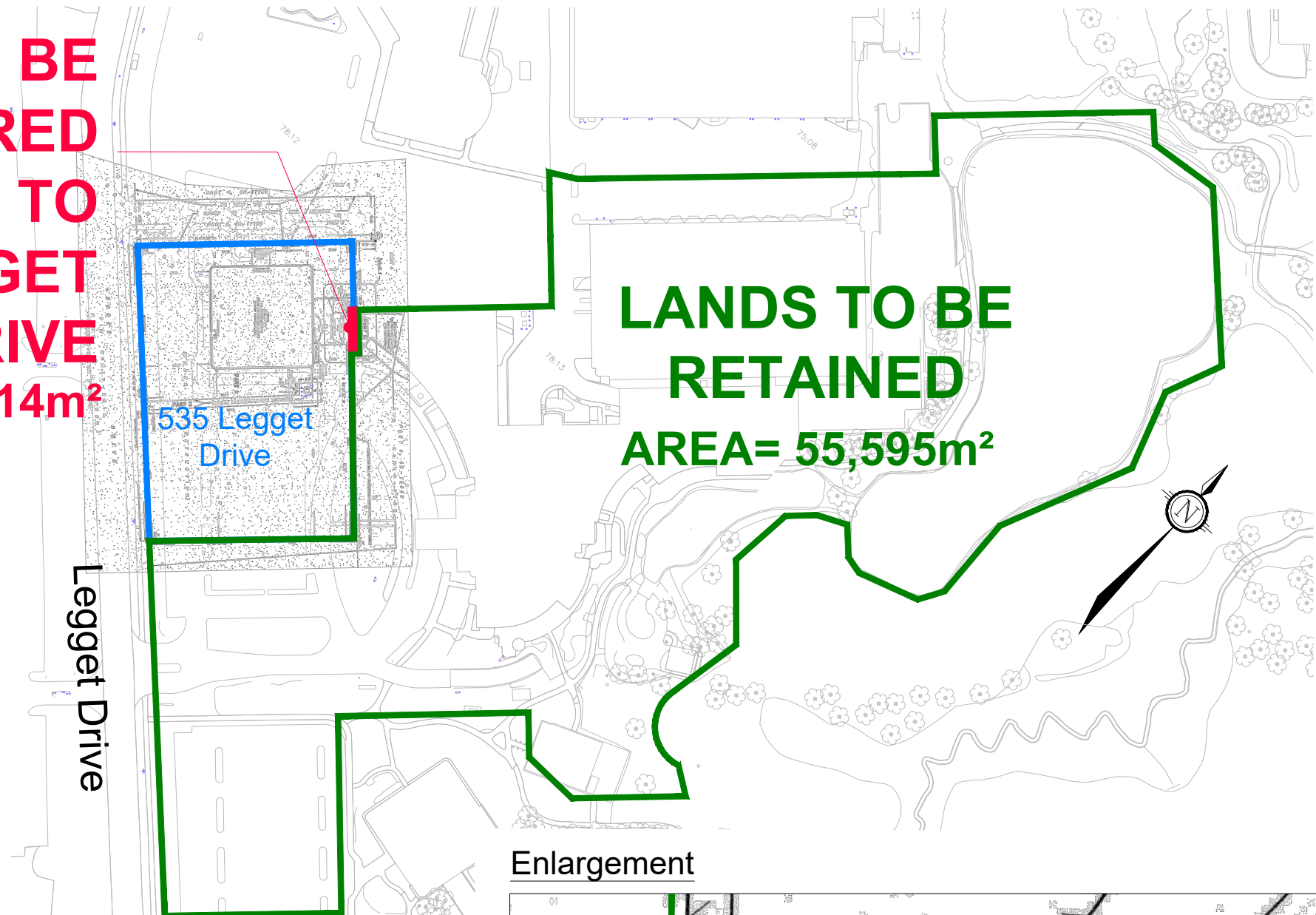


LANDS TO BE SEVERED & ADDED TO 535 LEGGET DRIVE
AREA= 14m²

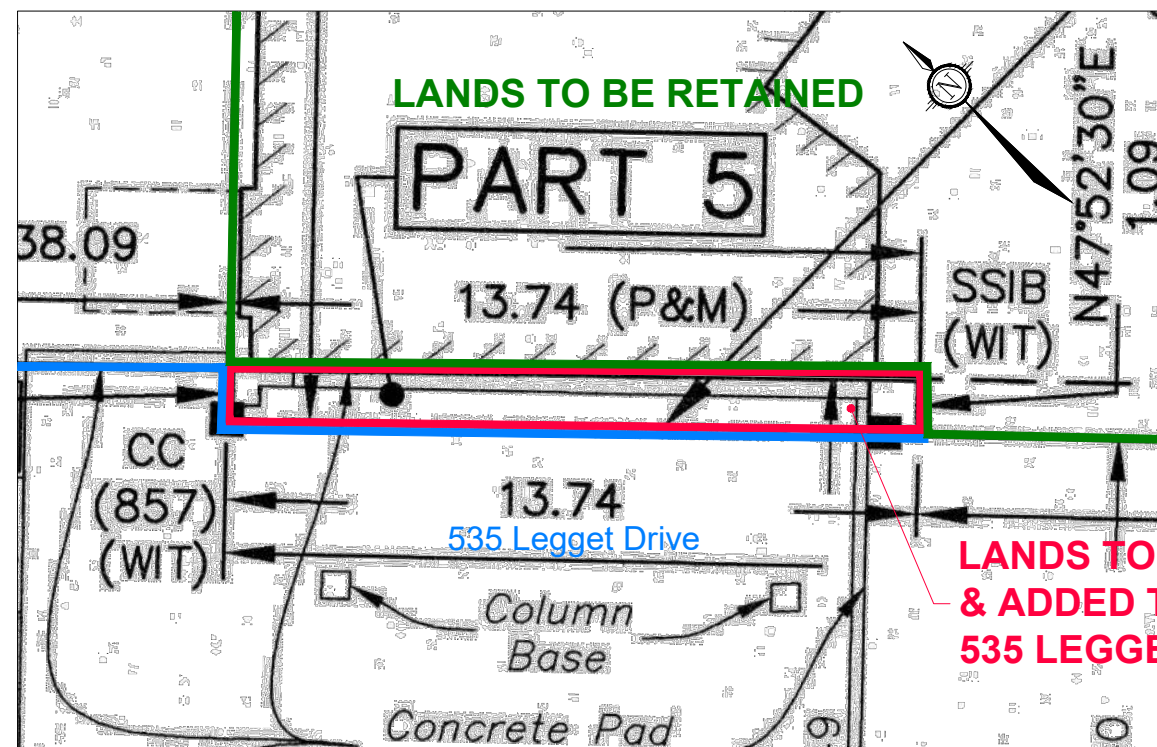


LANDS TO BE RETAINED
AREA= 55,595m²

Legget Drive

535 Legget Drive

Enlargement



LANDS TO BE RETAINED

PART 5

13.74 (P&M)

SSIB (WIT)

N47°52'30"E

1.09

38.09

CC (857) (WIT)

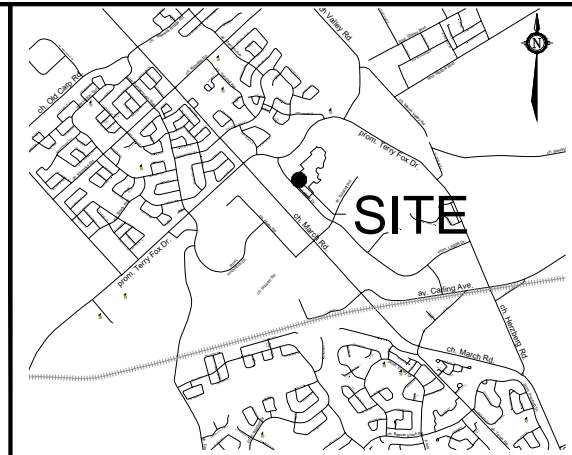
13.74

535 Legget Drive

Column Base

Concrete Pad

LANDS TO BE SEVERED & ADDED TO 535 LEGGET DRIVE



KEY PLAN
 N.T.S.

SITE

SEVERANCE APPLICATION

525 LEGGET DRIVE

PART OF LOT 8,
 CONCESSION 4;
 Geographic Township of March
 CITY OF OTTAWA

Committee of Adjustment
 Received | Reçu le
Revised | Modifié le : 2025-12-01
 City of Ottawa | Ville d'Ottawa
 Comité de dérogation

1 : 2000

No.	REVISION	DATE	BY
2.	REVISED & RE-ISSUED FOR CONSENT APPLICATION	DEC 01/25	NT
1.	ISSUED FOR CONSENT APPLICATION	NOV 24/25	NT

NOVATECH
 Engineers, Planners & Landscape Architects
 Suite 200, 240 Michael Cowpland Drive
 Ottawa, Ontario, Canada K2M 1P6
 Telephone (613) 254-9643
 Facsimile (613) 254-5867
 Website www.novatech-eng.com

ISSUED
 DECEMBER, 2025
 PROJECT No. 124045
 DRAWING No. 124045-SEV

METRIC
DISTANCES AND COORDINATES SHOWN ON THIS PLAN ARE IN METRES
AND CAN BE CONVERTED TO FEET BY DIVIDING BY 0.3048

Certificate of Correction
(subsection 49 (10) of O. Reg. 43/96 under the Registry Act)
Corrected under an order of the Examiner of Surveys registered
as No. OC2842228 on October 22, 2025
per Tareyn Gardner, OLS, Assistant Examiner of Surveys

SCHEDULE				
PART	LOT	PLAN/CONCESSION	PIN	AREA (SQ. M.)
1				771
2				213
3	PART OF LOT 8	CONCESSION 4	ALL OF 04517-1171	416
4				4037
5			PART OF 04517-1135	14

PART 2 - SUBJECT TO EASEMENT INST. LT1248060.
PART 3 - SUBJECT TO EASEMENT INST. LT1242631.

PLAN 4R-36725

Received and deposited

March 14th, 2025

Jennifer Verral

Representative for the
Land Registrar for the
Land Titles Division of
Ottawa-carleton (No.4)

PLAN OF SURVEY OF
PART OF LOT 8
CONCESSION 4
GEOGRAPHIC TOWNSHIP OF MARCH
CITY OF OTTAWA

SCALE 1 : 300
0 5 10 20 30 metres

THE INTENDED PLOT SIZE OF THIS PLAN IS 914mm IN WIDTH
BY 762mm IN HEIGHT WHEN PLOTTED AT A SCALE OF 1:300.
FAIRHALL, MOFFATT & WOODLAND LIMITED
ONTARIO LAND SURVEYORS

COORDINATES WERE DERIVED FROM REAL TIME NETWORK
OBSERVATIONS (SMARTNET) MTM ZONE 9, NAD83 CSRS (2010).
COORDINATES HAVE BEEN DETERMINED TO AN URBAN ACCURACY
IN ACCORDANCE WITH SECTION 14(2) OF O. REG. 218/10.

POINT ID	NORTHING	EASTING
473	5023294.49	350247.22
1143	5023284.75	350275.62
508	5023188.27	350348.62

COORDINATES CANNOT IN THEMSELVES BE USED TO RE-ESTABLISH
CORNERS OR BOUNDARIES SHOWN ON THIS PLAN.

Committee of Adjustment
Received | Reçu le
Revised | Modifié le : 2025-11-28
City of Ottawa | Ville d'Ottawa
Comité de dérogation

NOTES

- BEARINGS ARE GRID, DERIVED FROM THE EASTERLY LIMIT OF LEGGET DRIVE AS SHOWN ON PLAN 4R-16648, HAVING A BEARING OF N43°40'00" W AND ARE REFERRED TO THE CENTRAL MERIDIAN, 76°30' W LONGITUDE MTM ZONE 9, NAD83 CSRS (2010).
- DISTANCES ARE GROUND AND CAN BE CONVERTED TO GRID BY MULTIPLYING BY THE COMBINED SCALE FACTOR 0.9999185.
- ALTERNATE AND REDUCED LENGTH MONUMENTS SET DUE TO UNDERGROUND UTILITY HAZARD.

LEGEND

- - SURVEY MONUMENT SET
- - SURVEY MONUMENT FOUND
- IB - IRON BAR
- SIB - STANDARD IRON BAR
- SSIB - SHORT STANDARD IRON BAR
- CC - CUT CROSS
- CP - CONCRETE PIN
- (P) - PLAN 4R-17106
- (P1) - PLAN 4R-16648
- (S) - SET
- (M) - MEASURED
- (857) - FAIRHALL, MOFFATT & WOODLAND LIMITED, O.L.S.
- (WT) - WITNESS
- PIN - PROPERTY IDENTIFIER NUMBER
- (123) - POINT IDENTIFICATION NUMBER

SURVEYOR'S CERTIFICATE

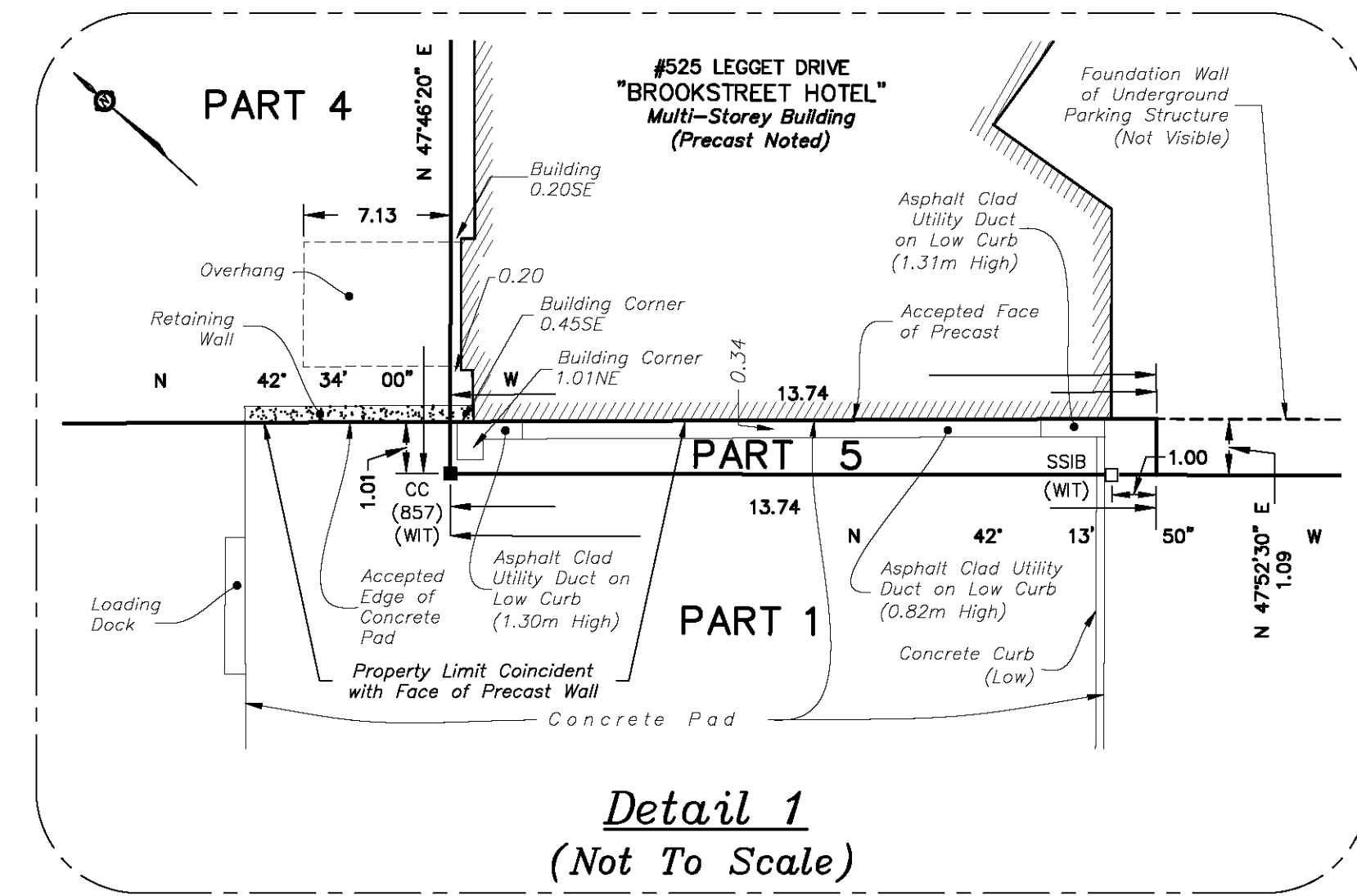
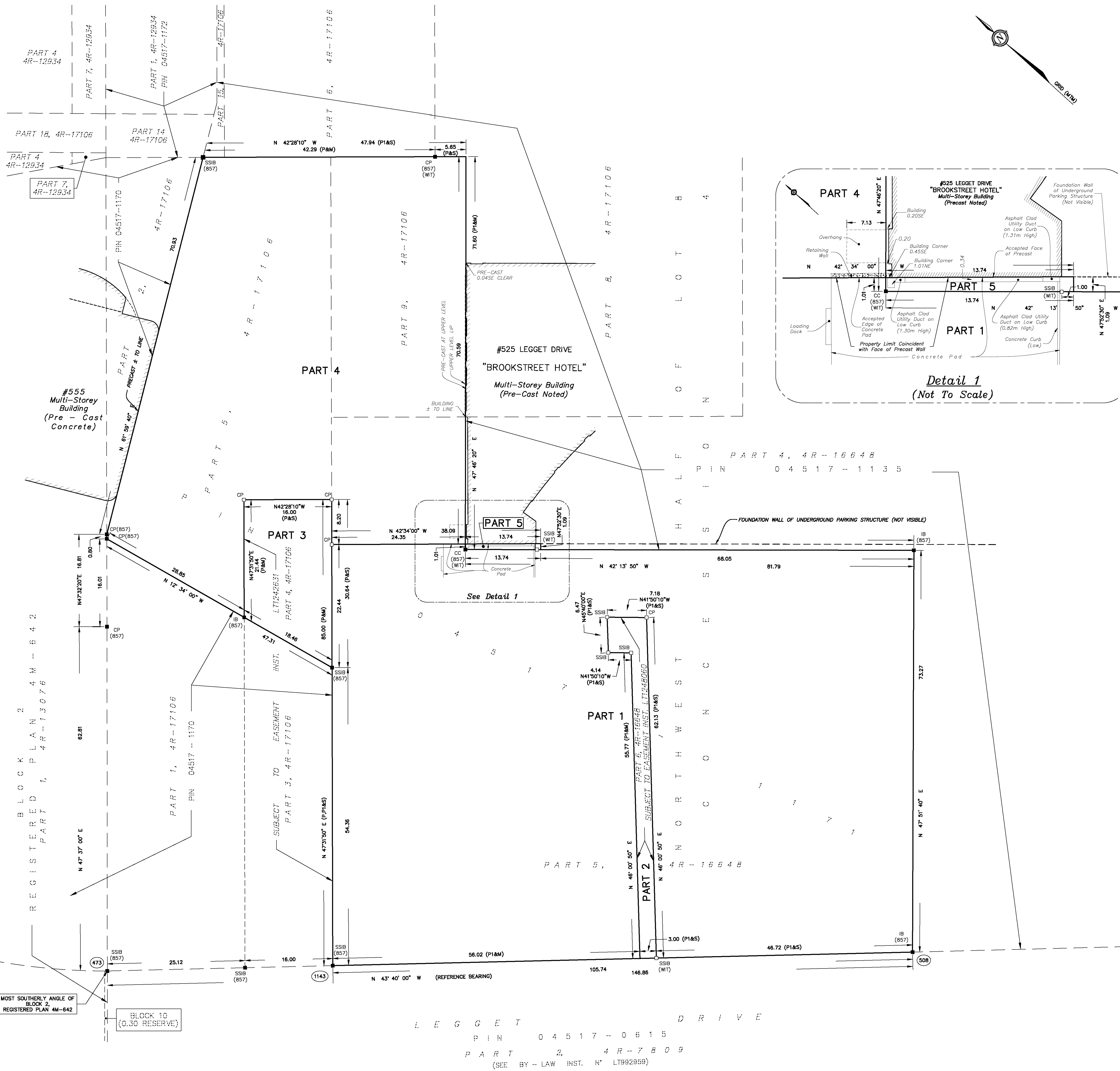
- I CERTIFY THAT:
- THIS SURVEY AND PLAN ARE CORRECT AND IN ACCORDANCE WITH THE SURVEYS ACT, THE SURVEYORS ACT, THE LAND TITLES ACT AND THE REGULATIONS MADE UNDER THEM.
 - THE SURVEY WAS COMPLETED ON OCTOBER 1, 2024.

2025/03/12

JOHN H. GUYRI
ONTARIO LAND SURVEYOR

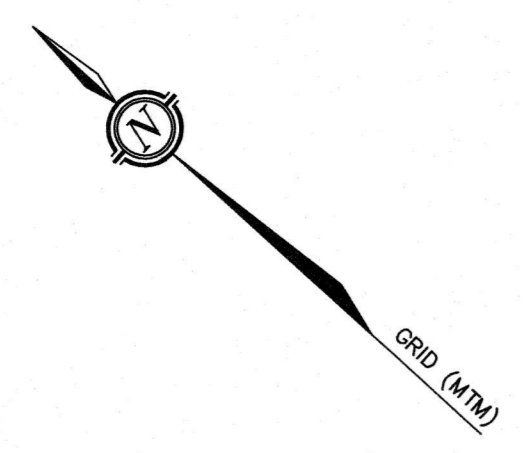
THIS PLAN OF SURVEY RELATES TO AOLS PLAN SUBMISSION FORM NUMBER V-88210.

Fairhall Moffatt & Woodland L.L.B. LTD. Ontario Land Surveyors Surveying and Land Information Services 100-500 TERRY FOX DRIVE, KANATA, ONTARIO K2L 4B6 TEL: (613) 591-2500 FAX: (613) 591-1495 www.fmw.com	JOB No. AE16000
	E 350333, N 5023298 REFERENCE No. 214(c) - 4 MARCH S:\089\VE1800\DWG 2025-03-12 rp_ae160-2.dwg (en)



LEGGET DRIVE
PIN 04517-0615
PART 2, 4R-7809
(SEE BY-LAW INST. N° LT992958)

METRIC
DISTANCES AND COORDINATES SHOWN ON THIS PLAN ARE IN METRES
AND CAN BE CONVERTED TO FEET BY DIVIDING BY 0.3048



SURVEYOR'S REAL PROPERTY REPORT - PART 1
PLAN OF SURVEY OF
PART OF LOT 8
CONCESSION 4
GEOGRAPHIC TOWNSHIP OF MARCH
CITY OF OTTAWA
SCALE 1 : 300
0 5 10 20 30 metres
FAIRHALL, MOFFATT & WOODLAND LIMITED
ONTARIO LAND SURVEYORS

NOTES

- BEARINGS ARE GRID, DERIVED FROM THE EASTERLY LIMIT OF LEGGETT DRIVE AS SHOWN ON PLAN 4R-36725, HAVING A BEARING OF N43°40'00"W AND ARE REFERRED TO THE CENTRAL MERIDIAN, 76°30'W LONGITUDE MTM ZONE 9, NAD83 CSRS (2010).
- DISTANCES ARE GROUND AND CAN BE CONVERTED TO GRID BY MULTIPLYING BY THE COMBINED SCALE FACTOR 0.9999185.

Committee of Adjustment
Received | Reçu le
Revised | Modifié le : 2025-11-28
City of Ottawa | Ville d'Ottawa
Comité de dérogation

LEGEND

- - SURVEY MONUMENT FOUND
- IB - IRON BAR
- SSIB - SHORT STANDARD IRON BAR
- CC - CUT CROSS
- CP - CONCRETE PIN
- (P) - PLAN 4R-36725
- (S) - SET
- (M) - MEASURED
- (857) - FAIRHALL, MOFFATT & WOODLAND LIMITED, O.L.S.
- (WT) - WITNESS
- PIN - PROPERTY IDENTIFIER NUMBER

SURVEYOR'S REAL PROPERTY REPORT - PART 2
REPORT SUMMARY

DESCRIPTION OF LAND
PART OF LOT 8, CONCESSION 4, GEOGRAPHIC TOWNSHIP OF MARCH, CITY OF OTTAWA, DESIGNATED AS PARTS 1 & 2, PLAN 4R-36725, AS IN PART OF PIN 04517-1171 AND AS PART 5, PLAN 4R-36725, AS IN PART OF PIN 04517-1135.

REGISTERED EASEMENTS
PART SUBJECT TO EASEMENT INST. LT1248060 DESIGNATED AS PART 2, PLAN 4R-36725 IN FAVOUR OF HYDRO OTTAWA LIMITED.

ZONING
COMPLIANCE WITH ZONING, LAND USE, ENVIRONMENTAL AND BUILDING REGULATIONS NOT CERTIFIED BY THIS REPORT.

THIS REPORT WAS PREPARED FOR
KANATA RESEARCH PARK CORPORATION
THE UNDERSIGNED ACCEPTS NO
RESPONSIBILITY FOR USE BY OTHER PARTIES.

ASSOCIATION OF ONTARIO
LAND SURVEYORS
PLAN SUBMISSION FORM
V-121042

SURVEYOR'S CERTIFICATE

I CERTIFY THAT:
1. THIS SURVEY AND PLAN ARE CORRECT AND IN ACCORDANCE WITH THE SURVEYORS ACT, THE SURVEYORS ACT AND THE REGULATIONS MADE UNDER THEM.
2. THE SURVEY WAS COMPLETED ON OCTOBER 01, 2025.

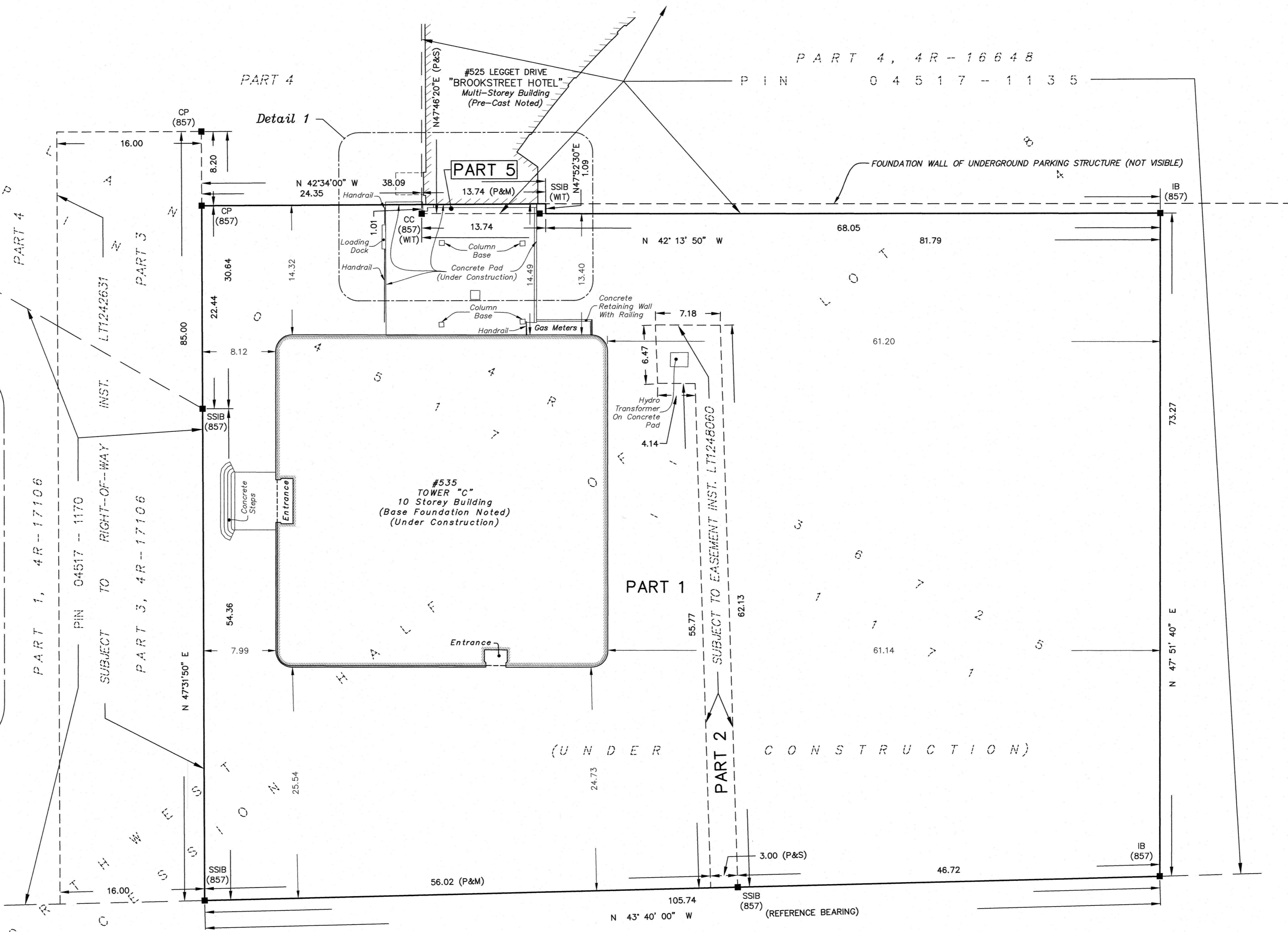
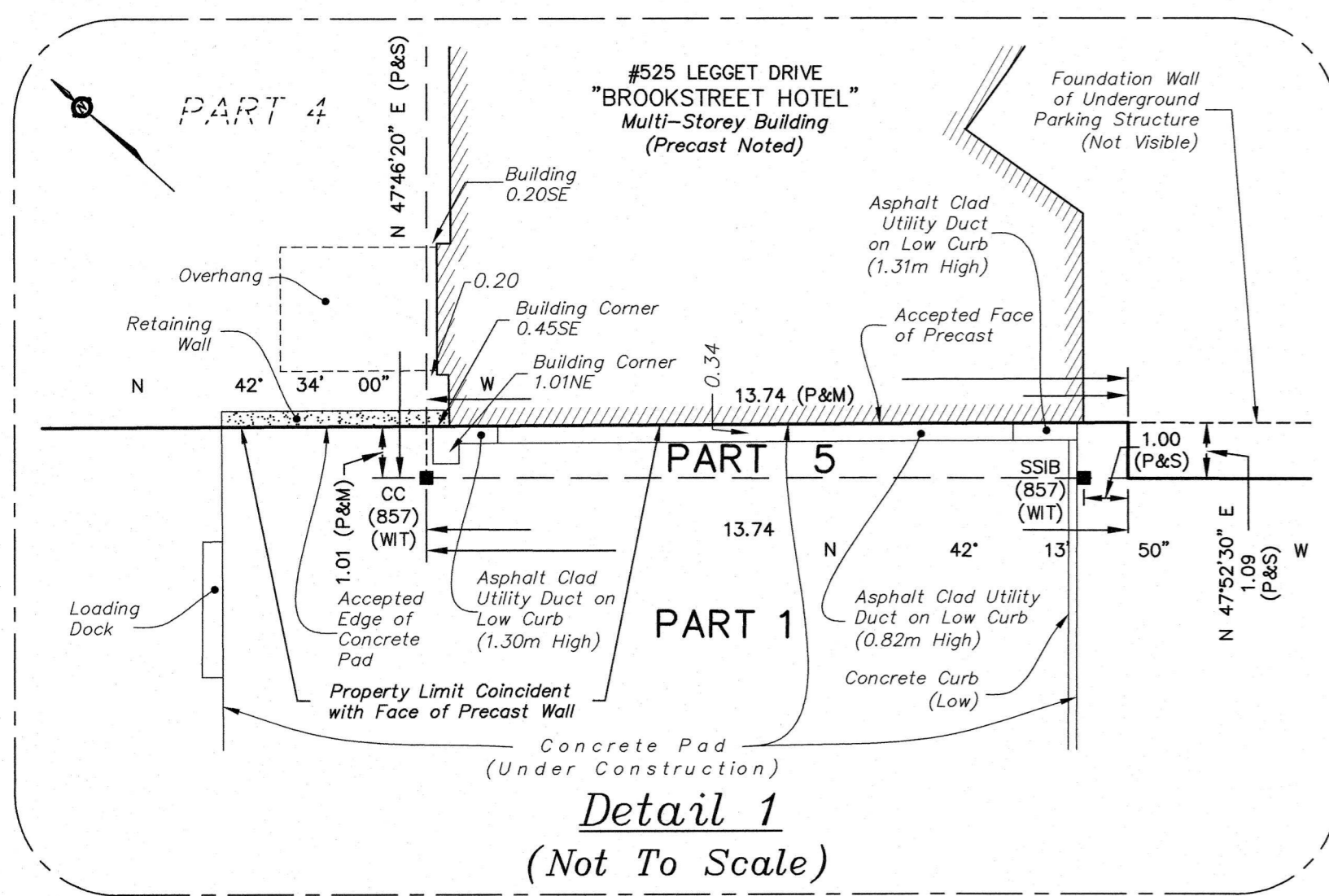
DATE: 2025/10/01
JOHN H. GUTRI
ONTARIO LAND SURVEYOR

THIS PLAN IS NOT VALID
UNLESS IT IS AN EMBOSSED
ORIGINAL COPY
ISSUED BY THE SURVEYOR
IN ACCORDANCE WITH
REGULATION 1028, SECTION 29 (3).

**Fairhall
Moffatt &
Woodland**
LIMITED
ONTARIO LAND SURVEYORS
Surveying and Land Information Services
100-600 TERRY FOX DRIVE, KANATA, ONTARIO K2L 4B6
TEL: (613) 591-2580 FAX: (613) 591-1495
www.fmw.on.ca

OTTAWA

JOB No.
AE16000
E 350333, N 5023298
REFERENCE No.
214(b) - 4 MARCH
S:\JOBS\AE16000\DWG 2025-10-20
srpr_ae160-2.dwg (cnr)



LEGGETT DRIVE
PIN 04517-0615
PART 2, 4R-7809
(SEE BY-LAW INST. N° LT992959)

© COPYRIGHT 2025. REPRODUCTION, ALTERATION OR DISTRIBUTION OF THIS PLAN WITHOUT THE WRITTEN CONSENT OF FAIRHALL, MOFFATT & WOODLAND LIMITED IS PROHIBITED.