

I REQUIRE THIS PLAN TO BE DEPOSITED UNDER THE LAND TITLES ACT.

DATE: \_\_\_\_\_

DANIEL ROBINSON  
ONTARIO LAND SURVEYOR

**PLAN 4R-**  
RECEIVED AND DEPOSITED

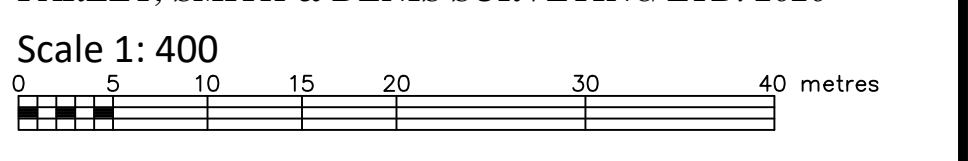
DATE: \_\_\_\_\_

REPRESENTATIVE FOR LAND REGISTRAR  
FOR THE LAND TITLES DIVISION OF  
OTTAWA-CARLETON No. 4.

SCHEDULE					
PART	LOT/BLOCK	CONCESSION/PLAN	PIN	AREA (Sq.m.)	
1	PART OF BLOCK O	4M-153	ALL OF 04059 - 0118	X	
2	PART OF BLOCK O			X	
3	PART OF BLOCK O			X	
4	PART OF BLOCK O			X	
5	ALL OF BLOCK P			X	
6	PART OF BLOCK P			X	
7	PART OF BLOCK P			X	
8	PART OF BLOCK P			X	
9	PART OF BLOCK Q			ALL OF 04059 - 0121	X
10	PART OF Q			ALL OF 04059 - 0122	X
11	PART OF S			2 (RIDEAU FRONT)	X
12	PART OF S			2 (RIDEAU FRONT)	X

PARTS 1 & 2 ARE SUBJECT TO EASEMENT PER INST No. OC2776124  
 PARTS 1 TO 8 (INCLUSIVE) ARE SUBJECT TO EASEMENT PER INST No. LT356656  
 PARTS 5 & 8 ARE SUBJECT TO EASEMENT PER INST. No. OT45289  
 PARTS 3 & 5 ARE SUBJECT TO EASEMENT PER INST. LT153446  
 PARTS 3 TO 8 (INCLUSIVE) ARE SUBJECT TO EASEMENT PER INST No. LT264506  
 PARTS 10,11 & 12 ARE SUBJECT TO EASEMENT PER INST No. NS229527

PLAN OF SURVEY OF  
**ALL OF BLOCK P and  
 PART OF BLOCKS O & Q**  
**REGISTERED PLAN 4M-153 and  
 PART OF LOT 5**  
**CONCESSION 2 (RIDEAU FRONT)**  
 GEOGRAPHIC TOWNSHIP OF GLOUCESTER  
 CITY OF OTTAWA  
 FARLEY, SMITH & DENIS SURVEYING LTD. 2020



**Metric Note**  
 Distances and coordinates on this plan are in metres and can be converted to feet by dividing by 0.3048.

**Distance Note**  
 Distances shown on this plan are ground distances and can be converted to grid distances by multiplying by the combined scale factor of 0.99994.

**Bearing Note**  
 Bearings are MTM grid, derived from the Smart-Net Real Time Network. GPS observations on reference points A and B, shown hereon, having a bearing of N 41° 50' 30" W and are referred to the Central Meridian of MTM Zone 9 (76°30' West Longitude) Nad-83 (Original).

CO-ORDINATES WERE DERIVED FROM CAN-NET REAL TIME NETWORK OBSERVATIONS, MTM ZONE 9, N.A.D. 1983 (ORIGINAL).		
POINT ID	NORTHING	EASTING
(A)	5023393.78	369646.86
(B)	5023484.61	369565.53
01919680005	5027191.26	361496.76
01919680105	5024915.16	373791.65

CO-ORDINATES ARE MTM ZONE 9, N.A.D. 1983 (ORIGINAL), TO URBAN ACCURACY PER SEC. 14 (2) OF O.R.G. 216/10, AND CANNOT, IN THEMSELVES, BE USED TO RE-ESTABLISH CORNERS OR BOUNDARIES SHOWN ON THIS PLAN.

**Surveyor's Certificate**

- I certify that:
- This survey and plan are correct and in accordance with the Surveys Act, the Surveyors Act and the Land Titles Act and the Regulations made under them.
  - The survey was completed on the \_\_\_ day of \_\_\_\_\_ 2025.

Date: \_\_\_\_\_ Daniel Robinson  
 Ontario Land Surveyor

This plan of survey relates to AOLS Plan Submission Form Number V-XXXXX

- Notes & Legend**
- Denotes Survey Monument Planted
  - Survey Monument Found
  - SIB Standard Iron Bar
  - SSIB Short Standard Iron Bar
  - IB Iron Bar
  - CP Concrete Pin
  - Meas Measured
  - (P1) Plan by (647) dated June 8, 1982
  - (P2) Plan 4M-588
  - (P3) Carleton Condominium Plan No. 109
  - (P4) Expropriation Plan D-54
  - (P5) Plan by (1287) dated May 7, 1991 (Job No. 66/91)
  - (P6) Plan by (1287) dated October 17, 1998
  - (P7) Plan by (1692) dated December 4, 2020 (Job No. 520-20)
  - (P8) Registered Plan M-153
  - (P9) Plan 4R-830

**Committee of Adjustment  
 Received | Reçu le**

**2025-11-24**

**City of Ottawa | Ville d'Ottawa  
 Comité de dérogation**

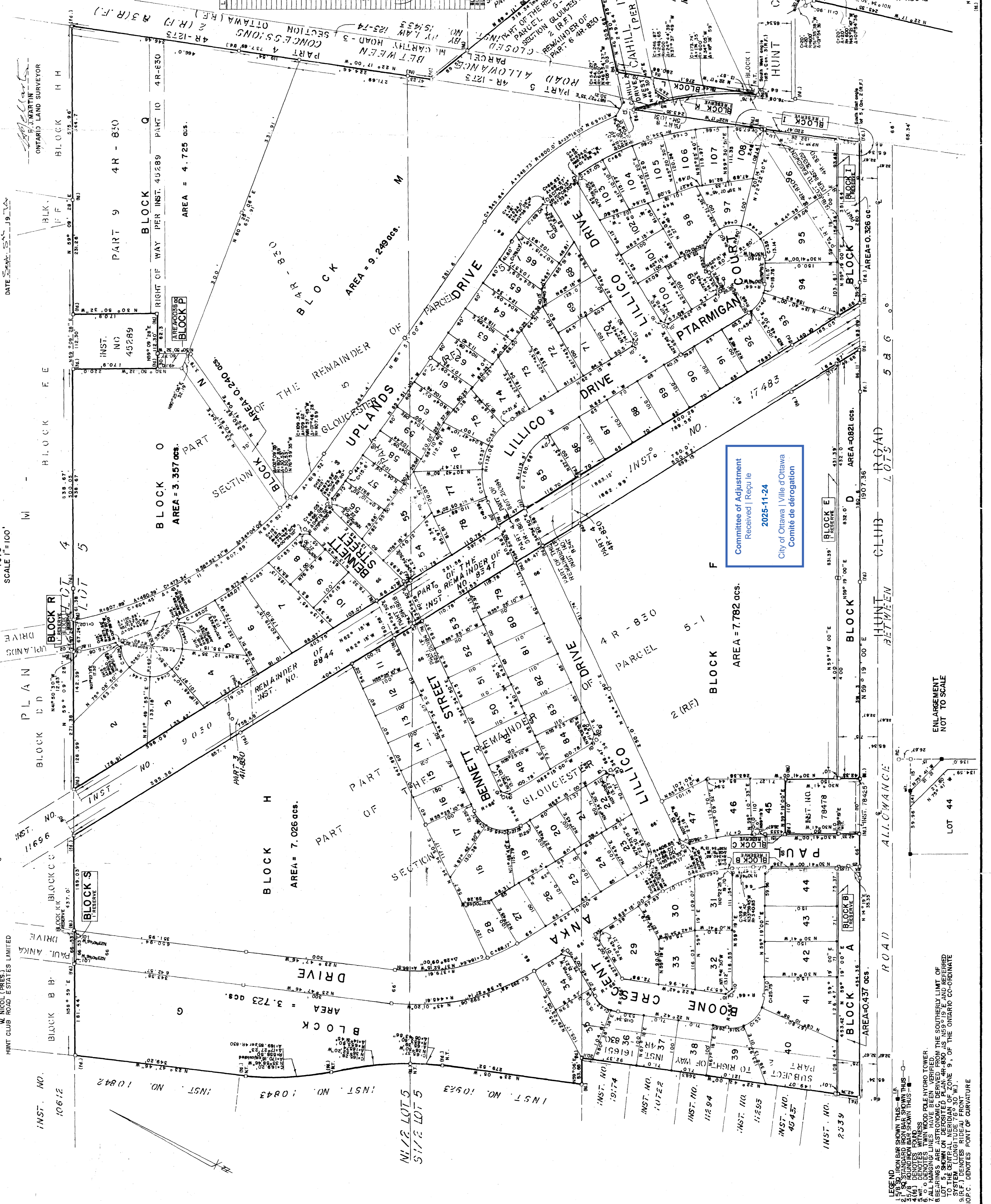
**FARLEY, SMITH & DENIS SURVEYING LTD.**

ONTARIO LAND SURVEYORS  
 CANADA LAND SURVEYORS

Unit 275, 30 COLONNADE ROAD, OTTAWA, ONTARIO K2E 7J6  
 TEL: (613) 727-8226 E-mail: info@fstdsurveys.ca

PLAN OF SUBDIVISION OF  
PART OF LOT 5 CONCESSION 2 (R.F.)  
AND  
PART OF LOT 5 CONCESSION 3 (R.F.)  
AND  
PART OF THE ORIGINAL ROAD ALLOWANCE  
BETWEEN  
CONCESSIONS 2 (R.F.) & 3 (R.F.)  
TOWNSHIP OF GLOUCESTER  
(NOW IN THE CITY OF OTTAWA)  
REGIONAL MUNICIPALITY OF OTTAWA-CARLETON  
FARLEY, MARTIN & ASSOC. LTD.  
SURVEYED BY H. J. MARTIN C.L.S.  
1975  
SCALE 1"=100'

OWNER'S CERTIFICATE  
HEREBY CERTIFY THAT  
LOTS 1 TO 108 BOTH INCLUSIVE, BLOCKS A, B, C, D, E, F, G, H, I, J, K, L, M, N, O, P, Q, R AND BLOCKS SAGE (K.R.S.) (RESERVE), THE STREETS NAMELY  
PAUL ANKA DRIVE, BOONE CRESCENT, BENNETT STREET, LILlico DRIVE, PTARMIGAN COURT  
AND HUNT CLUB ROAD ARE DESIGNATED WITHIN THE AREA OF SURVEY OUTLINED HAVE BEEN Laid OUT IN  
ACCORDANCE WITH OUR INSTRUCTIONS  
THE STREETS ARE HEREBY DEDICATED AS PUBLIC HIGHWAYS.  
DATE: AUG 5 1975



Approved under Section 33 of  
THE PLANNING ACT.  
This 27th day of June 1975.  
Donald J. Irvine  
Minister of Municipal Affairs

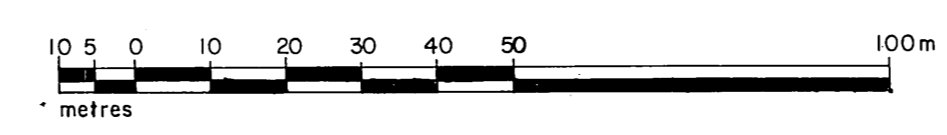
LOT	CHORD	BEARING	RAD.	ARC	DELTA
1	16.08	N 44° 30' 10" W	873.89	76.11	04.6 59 23
2	14.74	N 44° 30' 10" W	873.89	76.11	04.6 59 23
3	14.74	N 44° 30' 10" W	873.89	76.11	04.6 59 23
4	14.74	N 44° 30' 10" W	873.89	76.11	04.6 59 23
5	14.74	N 44° 30' 10" W	873.89	76.11	04.6 59 23
6	14.74	N 44° 30' 10" W	873.89	76.11	04.6 59 23
7	14.74	N 44° 30' 10" W	873.89	76.11	04.6 59 23
8	14.74	N 44° 30' 10" W	873.89	76.11	04.6 59 23
9	14.74	N 44° 30' 10" W	873.89	76.11	04.6 59 23
10	14.74	N 44° 30' 10" W	873.89	76.11	04.6 59 23
11	14.74	N 44° 30' 10" W	873.89	76.11	04.6 59 23
12	14.74	N 44° 30' 10" W	873.89	76.11	04.6 59 23
13	14.74	N 44° 30' 10" W	873.89	76.11	04.6 59 23
14	14.74	N 44° 30' 10" W	873.89	76.11	04.6 59 23
15	14.74	N 44° 30' 10" W	873.89	76.11	04.6 59 23
16	14.74	N 44° 30' 10" W	873.89	76.11	04.6 59 23
17	14.74	N 44° 30' 10" W	873.89	76.11	04.6 59 23
18	14.74	N 44° 30' 10" W	873.89	76.11	04.6 59 23
19	14.74	N 44° 30' 10" W	873.89	76.11	04.6 59 23
20	14.74	N 44° 30' 10" W	873.89	76.11	04.6 59 23
21	14.74	N 44° 30' 10" W	873.89	76.11	04.6 59 23
22	14.74	N 44° 30' 10" W	873.89	76.11	04.6 59 23
23	14.74	N 44° 30' 10" W	873.89	76.11	04.6 59 23
24	14.74	N 44° 30' 10" W	873.89	76.11	04.6 59 23
25	14.74	N 44° 30' 10" W	873.89	76.11	04.6 59 23
26	14.74	N 44° 30' 10" W	873.89	76.11	04.6 59 23
27	14.74	N 44° 30' 10" W	873.89	76.11	04.6 59 23
28	14.74	N 44° 30' 10" W	873.89	76.11	04.6 59 23
29	14.74	N 44° 30' 10" W	873.89	76.11	04.6 59 23
30	14.74	N 44° 30' 10" W	873.89	76.11	04.6 59 23
31	14.74	N 44° 30' 10" W	873.89	76.11	04.6 59 23
32	14.74	N 44° 30' 10" W	873.89	76.11	04.6 59 23
33	14.74	N 44° 30' 10" W	873.89	76.11	04.6 59 23
34	14.74	N 44° 30' 10" W	873.89	76.11	04.6 59 23
35	14.74	N 44° 30' 10" W	873.89	76.11	04.6 59 23
36	14.74	N 44° 30' 10" W	873.89	76.11	04.6 59 23
37	14.74	N 44° 30' 10" W	873.89	76.11	04.6 59 23
38	14.74	N 44° 30' 10" W	873.89	76.11	04.6 59 23
39	14.74	N 44° 30' 10" W	873.89	76.11	04.6 59 23
40	14.74	N 44° 30' 10" W	873.89	76.11	04.6 59 23
41	14.74	N 44° 30' 10" W	873.89	76.11	04.6 59 23
42	14.74	N 44° 30' 10" W	873.89	76.11	04.6 59 23
43	14.74	N 44° 30' 10" W	873.89	76.11	04.6 59 23
44	14.74	N 44° 30' 10" W	873.89	76.11	04.6 59 23
45	14.74	N 44° 30' 10" W	873.89	76.11	04.6 59 23
46	14.74	N 44° 30' 10" W	873.89	76.11	04.6 59 23
47	14.74	N 44° 30' 10" W	873.89	76.11	04.6 59 23
48	14.74	N 44° 30' 10" W	873.89	76.11	04.6 59 23
49	14.74	N 44° 30' 10" W	873.89	76.11	04.6 59 23
50	14.74	N 44° 30' 10" W	873.89	76.11	04.6 59 23
51	14.74	N 44° 30' 10" W	873.89	76.11	04.6 59 23
52	14.74	N 44° 30' 10" W	873.89	76.11	04.6 59 23
53	14.74	N 44° 30' 10" W	873.89	76.11	04.6 59 23
54	14.74	N 44° 30' 10" W	873.89	76.11	04.6 59 23
55	14.74	N 44° 30' 10" W	873.89	76.11	04.6 59 23
56	14.74	N 44° 30' 10" W	873.89	76.11	04.6 59 23
57	14.74	N 44° 30' 10" W	873.89	76.11	04.6 59 23
58	14.74	N 44° 30' 10" W	873.89	76.11	04.6 59 23
59	14.74	N 44° 30' 10" W	873.89	76.11	04.6 59 23
60	14.74	N 44° 30' 10" W	873.89	76.11	04.6 59 23
61	14.74	N 44° 30' 10" W	873.89	76.11	04.6 59 23
62	14.74	N 44° 30' 10" W	873.89	76.11	04.6 59 23
63	14.74	N 44° 30' 10" W	873.89	76.11	04.6 59 23
64	14.74	N 44° 30' 10" W	873.89	76.11	04.6 59 23
65	14.74	N 44° 30' 10" W	873.89	76.11	04.6 59 23
66	14.74	N 44° 30' 10" W	873.89	76.11	04.6 59 23
67	14.74	N 44° 30' 10" W	873.89	76.11	04.6 59 23
68	14.74	N 44° 30' 10" W	873.89	76.11	04.6 59 23
69	14.74	N 44° 30' 10" W	873.89	76.11	04.6 59 23
70	14.74	N 44° 30' 10" W	873.89	76.11	04.6 59 23
71	14.74	N 44° 30' 10" W	873.89	76.11	04.6 59 23
72	14.74	N 44° 30' 10" W	873.89	76.11	04.6 59 23
73	14.74	N 44° 30' 10" W	873.89	76.11	04.6 59 23
74	14.74	N 44° 30' 10" W	873.89	76.11	04.6 59 23
75	14.74	N 44° 30' 10" W	873.89	76.11	04.6 59 23
76	14.74	N 44° 30' 10" W	873.89	76.11	04.6 59 23
77	14.74	N 44° 30' 10" W	873.89	76.11	04.6 59 23
78	14.74	N 44° 30' 10" W	873.89	76.11	04.6 59 23
79	14.74	N 44° 30' 10" W	873.89	76.11	04.6 59 23
80	14.74	N 44° 30' 10" W	873.89	76.11	04.6 59 23
81	14.74	N 44° 30' 10" W	873.89	76.11	04.6 59 23
82	14.74	N 44° 30' 10" W	873.89	76.11	04.6 59 23
83	14.74	N 44° 30' 10" W	873.89	76.11	04.6 59 23
84	14.74	N 44° 30' 10" W	873.89	76.11	04.6 59 23
85	14.74	N 44° 30' 10" W	873.89	76.11	04.6 59 23
86	14.74	N 44° 30' 10" W	873.89	76.11	04.6 59 23
87	14.74	N 44° 30' 10" W	873.89	76.11	04.6 59 23
88	14.74	N 44° 30' 10" W	873.89	76.11	04.6 59 23
89	14.74	N 44° 30' 10" W	873.89	76.11	04.6 59 23
90	14.74	N 44° 30' 10" W	873.89	76.11	04.6 59 23
91	14.74	N 44° 30' 10" W	873.89	76.11	04.6 59 23
92	14.74	N 44° 30' 10" W	873.89	76.11	04.6 59 23
93	14.74	N 44° 30' 10" W	873.89	76.11	04.6 59 23
94	14.74	N 44° 30' 10" W	873.89	76.11	04.6 59 23
95	14.74	N 44° 30' 10" W	873.89	76.11	04.6 59 23
96	14.74	N 44° 30' 10" W	873.89	76.11	04.6 59 23
97	14.74	N 44° 30' 10" W	873.89	76.11	04.6 59 23
98	14.74	N 44° 30' 10" W	873.89	76.11	04.6 59 23
99	14.74	N 44° 30' 10" W	873.89	76.11	04.6 59 23
100	14.74	N 44° 30' 10" W	873.89	76.11	04.6 59 23
101	14.74	N 44° 30' 10" W	873.89	76.11	04.6 59 23
102	14.74	N 44° 30' 10" W	873.89	76.11	04.6 59 23
103	14.74	N 44° 30' 10" W	873.89	76.11	04.6 59 23
104	14.74	N 44° 30' 10" W	873.89	76.11	04.6 59 23
105	14.74	N 44° 30' 10" W	873.89	76.11	04.6 59 23
106	14.74	N 44° 30' 10" W	873.89	76.11	04.6 59 23
107	14.74	N 44° 30' 10" W	873.89	76.11	04.6 59 23
108	14.74	N 44° 30' 10" W	873.89	76.11	04.6 59 23

Committee of Adjustment  
Received / Reçu le  
2025-11-24  
City of Ottawa / Ville d'Ottawa  
Comité de dérogation

LEGEND  
IRON BAR SHOWN THIS...  
STANDARD IRON BAR SHOWN THIS...  
ELECTRICITY SHOWN THIS...  
WATER SHOWN THIS...  
SEWER SHOWN THIS...  
GAS SHOWN THIS...  
ALL DIMENSIONS IN METERS  
ALL BEARINGS ARE TRUE BEARINGS  
ALL BEARINGS ARE DERIVED FROM THE SOUTHERLY LIMIT OF  
LOT 5, SHOWN ON DEPOSITED PLAN 44-880 AS N59°09'19" E AND REFERRED  
TO SYSTEM (LONGITUDE 76°30' W)  
S(R.F.) DENOTES RIDEAU FRONT  
O.P.C. DENOTES POINT OF CURVATURE

PLAN OF SUBDIVISION OF  
**PART OF LOT 5, CONCESSION 3 (RIDEAU FRONT) AND**  
**PART OF ROAD ALLOWANCE BETWEEN CONCESSIONS 2 & 3 (R.F.)**  
 FORMERLY TOWNSHIP OF GLOUCESTER  
 KNOWN AS **Mc CARTHY ROAD** AS CLOSED BY BY-LAW 123-74  
 NOW IN THE  
**CITY OF OTTAWA**  
 AND  
**PART OF BLOCK Q, REGISTERED PLAN M-153 AND**  
**BLOCKS II, HH, EE AND FF, REGISTERED PLAN M-157 AND**  
**BLOCKS U AND V, REGISTERED PLAN M-159 AND**  
**BLOCKS C, D AND F, REGISTERED PLAN M-162**  
 ALL IN THE  
**CITY OF OTTAWA**  
 REGIONAL MUNICIPALITY OF  
**OTTAWA-CARLETON**

SCALE = 1:1000



FRED H. GOOCH, O.L.S.  
 1986

**METRIC**  
 DISTANCES SHOWN ON THIS PLAN ARE IN METRES AND CAN  
 BE CONVERTED TO FEET BY DIVIDING BY 0.3048.

**Committee of Adjustment**  
 Received | Reçu le  
**2025-11-24**  
 City of Ottawa | Ville d'Ottawa  
 Comité de dérogation

I certify this PLAN 4M-588 is registered in the Land Registry Office of the Land Titles Division of OTTAWA-CARLETON N° 4 at 10:15 o'clock A.M. on the 17th day of FEBRUARY 1986 and entered in the register for Parcel Plan Section 4M-588 and required consents and affidavits are registered as Plan Document N°

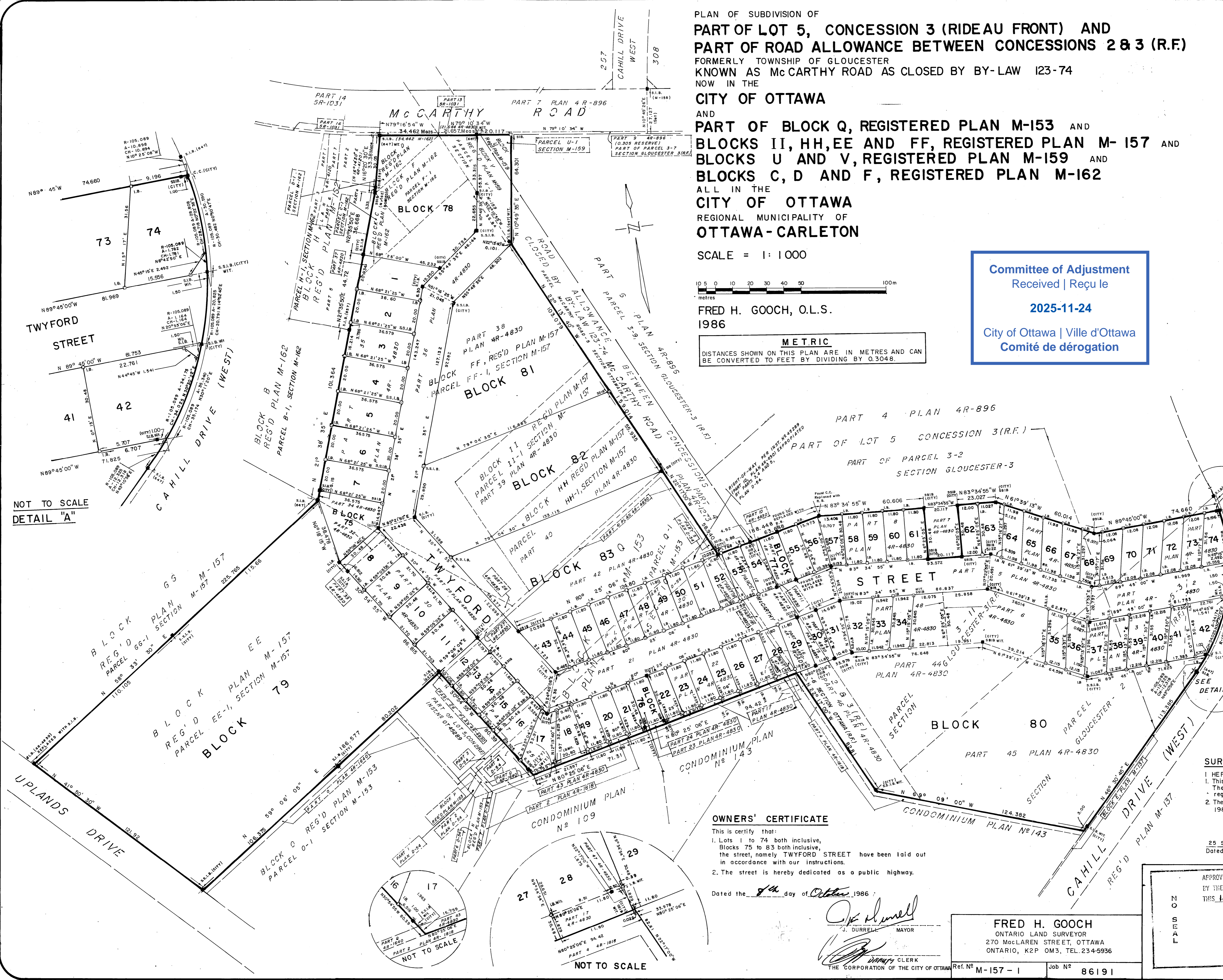
*Susan Webb* Cert. Officer  
 Land Registrar

The Subdivision represented by this Plan affects ALL of PARCEL 5-3, Section GLOUCESTER-2 (R.F.); ALL of PARCEL 3-11, Section GLOUCESTER-3 (R.F.); ALL of PARCEL McCarthy Road-6, Section OTTAWA (R.F.); PART of PARCEL Q-1, Section M-153; ALL of PARCELS EE-1, FF-1, HH-1 and II-1, Section M-157; ALL of PARCELS U-1 and V-1, Section M-159; ALL of PARCELS C-1, D-1 and F-1, Section M-162;

**NOTES & LEGEND**

- ★ - DENOTES SURVEY MONUMENT FOUND
- - DENOTES SURVEY MONUMENT SET
- S.I.B. - DENOTES 25mm SQUARE IRON BAR 1.22m LONG
- SS.I.B. - DENOTES 25mm SQUARE IRON BAR 0.61m LONG
- I.S. - DENOTES 16mm SQUARE IRON BAR 0.61m LONG
- R.B. - DENOTES ROCK BAR, 25mm SQUARE IRON BAR
- C.C. - DENOTES CUT CROSS
- WIT. - DENOTES WITNESS
- (CITY) - DENOTES CITY OF OTTAWA
- (647) - DENOTES H.R. FARLEY, O.L.S.
- (857) - DENOTES C.W. FAIRHALL, O.L.S.
- Meas. - DENOTES MEASURED

BEARINGS HEREON ARE ASTRONOMIC AND ARE DERIVED FROM THE EASTERLY LIMIT OF BLOCK Q REG'D PLAN M-153, SHOWN AS N22°17'00"W



NOT TO SCALE  
 DETAIL "A"

SEE  
 DETAIL "A"

**OWNERS' CERTIFICATE**

This is certify that:  
 1. Lots 1 to 74 both inclusive, Blocks 75 to 83 both inclusive, the street, namely TWYFORD STREET have been laid out in accordance with our instructions.  
 2. The street is hereby dedicated as a public highway.

Dated the 8th day of October 1986

*J. Durrell*  
 J. DURRELL MAYOR  
*[Signature]*  
 CLERK  
 THE CORPORATION OF THE CITY OF OTTAWA

FRED H. GOOCH  
 ONTARIO LAND SURVEYOR  
 270 MacLAREN STREET, OTTAWA  
 ONTARIO, K2P 0M3, TEL. 234-5936

Ref. N° M-157-1 Job N° 86191

**SURVEYOR'S CERTIFICATE**

I HEREBY CERTIFY THAT:  
 1. This survey and plan are correct and in accordance with The Survey Act and The Land Titles Act and the regulations made thereunder.  
 2. The survey was completed on the 23rd day of September, 1986.

25 SEPTEMBER, 1986  
 Dated at Ottawa  
*F.H. Gooch*  
 Ontario Land Surveyor

APPROVED UNDER SECTION 50 OF THE PLANNING ACT, BY THE REGIONAL MUNICIPALITY OF OTTAWA-CARLETON THIS 12 DAY OF FEB. 1987.  
 PLANNING COMMISSIONER  
*[Signature]*  
 REGIONAL MUNICIPALITY OF OTTAWA-CARLETON

N  
O  
S  
E  
A  
L

1. THE PERPENDICULAR WIDTHS OF ALL PART SHOWN HEREON ARE NOT TO SCALE
2. ALL PARTS LIE WHOLLY WITHIN THE LIMITS OF LOTS AND BLOCKS BEARING CORRESPONDING NUMBERS OR LETTERS AND HAVE PERPENDICULAR WIDTHS OF 4', 6' AND 8' SHOWN THUS
3. ALL PREVIOUSLY UNDEFINED LIMITS ARE PARALLEL WITH EXISTING LIMITS AND ARE PRODUCTIONS THEREOF AND INTERSECT AT COMMON POINTS AS NOTED ON TYPICAL ENLARGEMENT SHOWN.

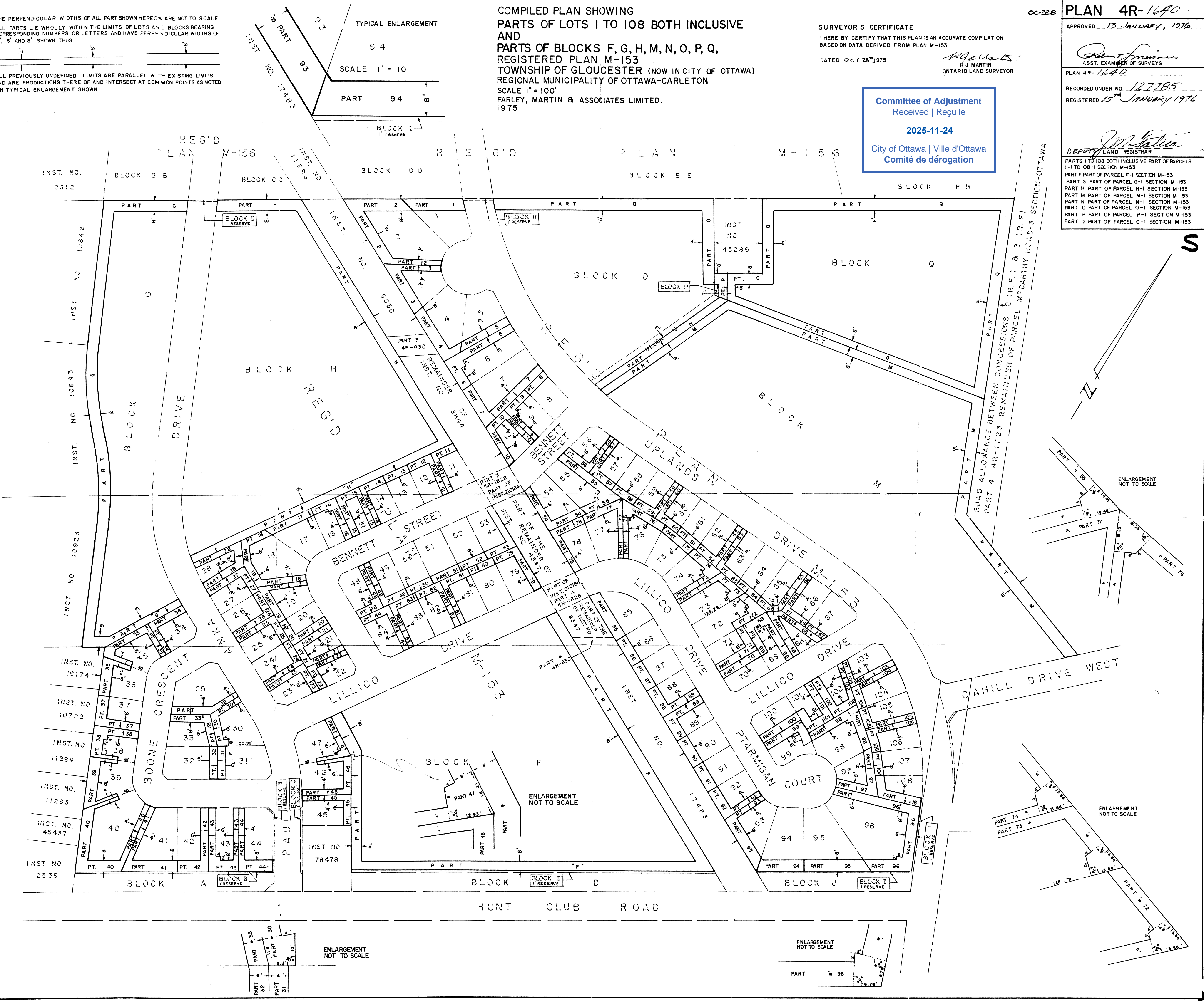
COMPILED PLAN SHOWING  
**PARTS OF LOTS 1 TO 108 BOTH INCLUSIVE  
 AND  
 PARTS OF BLOCKS F, G, H, M, N, O, P, Q,**  
 REGISTERED PLAN M-153  
 TOWNSHIP OF GLOUCESTER (NOW IN CITY OF OTTAWA)  
 REGIONAL MUNICIPALITY OF OTTAWA-CARLETON  
 SCALE 1" = 100'  
 FARLEY, MARTIN & ASSOCIATES LIMITED.  
 1975

SURVEYOR'S CERTIFICATE  
 I HEREBY CERTIFY THAT THIS PLAN IS AN ACCURATE COMPILATION  
 BASED ON DATA DERIVED FROM PLAN M-153  
 DATED OCT. 28<sup>th</sup> 1975  
 H. J. MARTIN  
 ONTARIO LAND SURVEYOR

cc-328 **PLAN 4R-1640**  
 APPROVED 13 JANUARY, 1976  
 ASST. EXAMINER OF SURVEYS  
 PLAN 4R-1640  
 RECORDED UNDER NO. 127785  
 REGISTERED 15<sup>th</sup> JANUARY 1976

**Committee of Adjustment**  
 Received | Reçu le  
**2025-11-24**  
 City of Ottawa | Ville d'Ottawa  
 Comité de dérogation

DEPUTY LAND REGISTRAR  
 PARTS 1 TO 108 BOTH INCLUSIVE PART OF PARCELS  
 1-1 TO 108-1 SECTION M-153  
 PART F PART OF PARCEL F-1 SECTION M-153  
 PART G PART OF PARCEL G-1 SECTION M-153  
 PART H PART OF PARCEL H-1 SECTION M-153  
 PART M PART OF PARCEL M-1 SECTION M-153  
 PART N PART OF PARCEL N-1 SECTION M-153  
 PART O PART OF PARCEL O-1 SECTION M-153  
 PART P PART OF PARCEL P-1 SECTION M-153  
 PART Q PART OF PARCEL Q-1 SECTION M-153

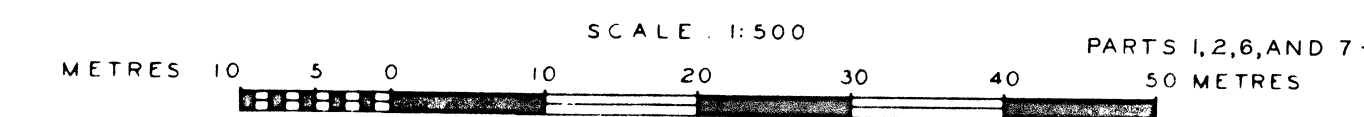


PLAN MATERIAL  
PLAN MATERIAL - CRONAFLEX  
GAUGE - 0.003 INCH  
PROCESS - PHOTOGRAPHIC  
INK - SPECIAL T

PLAN D-54  
APPROVED 9 MAY 1980  
ROBERT J. MANSUR  
ASS'T. EXAMINER OF SURVEYS  
I CERTIFY THAT THIS PLAN D-54 IS REGISTERED IN THE LAND REGISTRY OFFICE FOR THE LAND TITLES DIVISION OF OTTAWA-CARLETON AT 11:00 A.M. O'CLOCK ON THE 14th DAY OF MAY 1980 AND ENTERED IN THE REGISTER FOR PARCEL N-1, P-1, Q-1, SECTION M-153  
O. Vian  
LAND REGISTRAR

PLAN OF EXPROPRIATION  
IN ACCORDANCE WITH THE MUNICIPAL ACT  
AND  
THE EXPROPRIATIONS ACT R.S.O. 1970 CHAPTER 154  
OF  
BLOCKS N AND P, AND PART OF BLOCK Q, REGISTERED PLAN M-153  
CITY OF OTTAWA  
REGIONAL MUNICIPALITY OF OTTAWA - CARLETON

SCALE: 1: 500  
1978



CERTIFICATE OF APPROVAL

THE COUNCIL OF THE CORPORATION OF THE CITY OF OTTAWA HEREBY CERTIFIES THAT APPROVAL WAS GIVEN TO THE CORPORATION OF THE CITY OF OTTAWA ON THE 2nd DAY OF APRIL 1980 TO EXPROPRIATE THE LAND SHOWN, DESIGNATED AS PARTS 1,2,3,4,5,6 AND 7

SURVEYOR'S CERTIFICATE

- I HEREBY CERTIFY THAT:
1. THIS SURVEY AND PLAN ARE CORRECT AND IN ACCORDANCE WITH THE SURVEYS ACT AND THE LAND TITLES ACT AND THE REGULATIONS MADE THEREUNDER.
2. THAT I WAS PRESENT AT AND DID PERSONALLY SUPERVISE THE SURVEY REPRESENTED BY THIS PLAN.
3. THAT THIS PLAN CONTAINS A TRUE COPY OF THE FIELD NOTES OF SURVEY.
4. THAT THE SURVEY WAS COMPLETED ON THE 5th DAY OF FEBRUARY 1978.

Marion Dewar  
MAYOR

DATED AT OTTAWA  
THIS 1ST DAY OF MAY, 1980

Evelyn H. Cooper  
CLERK

Ronald Benn  
ONTARIO LAND SURVEYOR

EXPROPRIATION CERTIFICATE

THE LIMITED INTERESTS REQUIRED AND SHOWN HEREON AS PARTS 1, 2, 3, 4, 5, 6 AND 7, ARE HEREBY EXPROPRIATED.

NOTES & LEGEND

BEARINGS ARE ASTROMONIC AND ARE REFERRED TO THE NORTHERLY LIMIT OF PART 10 PLAN 4R-830 AND SHOWN AS N 59°09'55"E.

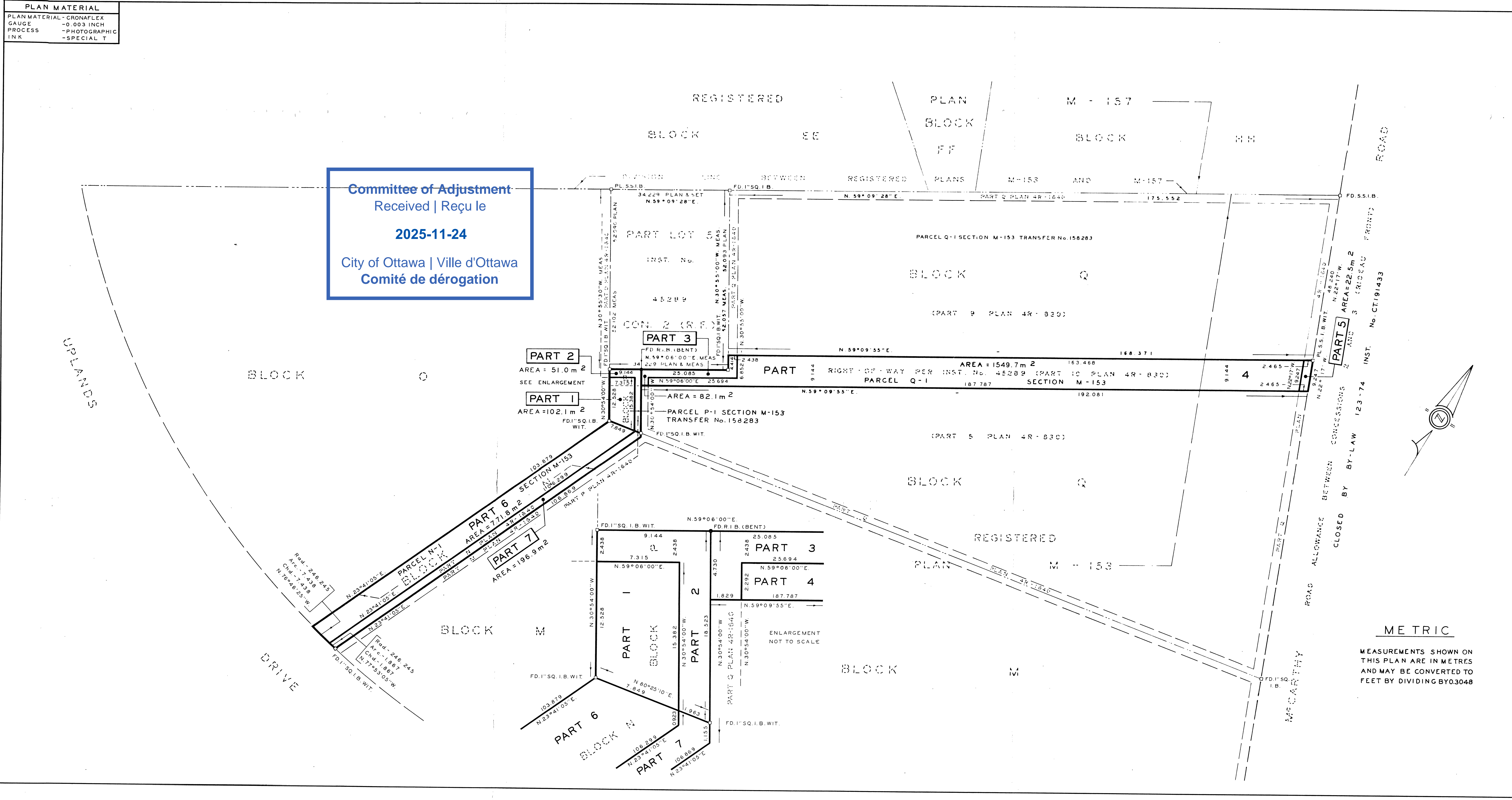
- FD DENOTES FOUND
PL PLANTED
S.S.I.B. SHORT STANDARD IRON BAR
I"SQ.I.B. ONE INCH SQUARE IRON BAR
R.I.B. ROUND IRON BAR
WIT. WITNESS
MEAS. MEASURED

Marion Dewar  
MAYOR

Evelyn H. Cooper  
CLERK

CITY OF OTTAWA  
DEPARTMENT OF PHYSICAL ENVIRONMENT  
ENGINEERING AND SURVEYS BRANCH  
SURVEYS AND MAPPING DIVISION

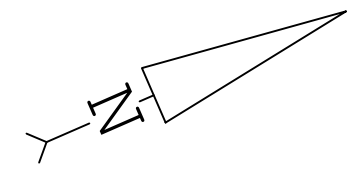
SCALE - 1: 500  
DRAWN BY - F. K. P.  
DATE - 22 APR 80  
PLAN No - B-1932



Committee of Adjustment  
Received | Reçu le  
2025-11-24  
City of Ottawa | Ville d'Ottawa  
Comité de dérogation

METRIC

MEASUREMENTS SHOWN ON THIS PLAN ARE IN METRES AND MAY BE CONVERTED TO FEET BY DIVIDING BY 0.3048



**Committee of Adjustment**  
Received | Reçu le  
**2025-11-24**  
City of Ottawa | Ville d'Ottawa  
Comité de dérogation

I REQUIRE THIS PLAN TO BE DEPOSITED UNDER THE LAND TITLES ACT.  
DATE: \_\_\_\_\_  
DANIEL ROBINSON  
ONTARIO LAND SURVEYOR

**PLAN 4R-**  
RECEIVED AND DEPOSITED  
DATE: \_\_\_\_\_  
REPRESENTATIVE FOR LAND REGISTRAR FOR THE LAND TITLES DIVISION OF OTTAWA-CARLETON No. 4.

SCHEDULE				
PART	LOT/BLOCK	CONCESSION/PLAN	PIN	AREA (Sq.m.)
1	PART OF BLOCK O		PART OF 04059 - 0118	3944.5
2				374.2
3				0.5
4				24.1
5	ALL OF BLOCK P	4M-153	ALL OF 04059 - 0120	26.5
6				15.0
7				70.3
8				16.7
9	PART OF BLOCK Q		ALL OF 04059 - 0121	588.2
10				871.5
11	PART OF 5	2 (RIDEAU FRONT)	ALL OF 04059 - 0122	173.5
12				735.9
13	ALL OF BLOCK N		ALL OF 04059 - 0119	197.5
14				773.6
15	PART OF BLOCK O	4M-153	PART OF 04059 - 0118	2164.9
16				2787.0
17				4324.7

PARTS 1, 2, 15, 16 & 17 - COMPRISES ALL OF PIN 04059-0118  
PARTS 1, 2, 15, 16 & 17 - COMPRISES ALL OF BLOCK O  
PARTS 1, 2, 13 TO 17 (INCLUSIVE) - SUBJECT TO EASEMENT PER INST. No. OC2776124  
PARTS 5 & 8 - SUBJECT TO EASEMENT PER INST. No. OT45289  
PARTS 3, 4, 5 & 13 - SUBJECT TO EASEMENT PER INST. LT153446  
PARTS 3 TO 8 (INCLUSIVE), 13 & 14 - SUBJECT TO EASEMENT PER INST. No. LT264506  
PARTS 10, 11 & 12 - SUBJECT TO EASEMENT PER INST. No. NS229527  
PARTS 1 TO 8 (INCLUSIVE), 13 TO 17 (INCLUSIVE) - SUBJECT TO EASEMENT PER INST. No. LT356656

PLAN OF SURVEY OF  
**ALL OF BLOCKS N, O, P and PART OF BLOCK Q REGISTERED PLAN 4M-153 and PART OF LOT 5 CONCESSION 2 (RIDEAU FRONT) GEOGRAPHIC TOWNSHIP OF GLOUCESTER CITY OF OTTAWA**  
FARLEY, SMITH & DENIS SURVEYING LTD. 2020

Scale 1: 400  
0 5 10 15 20 30 40 metres

**Metric Note**  
Distances and coordinates on this plan are in metres and can be converted to feet by dividing by 0.3048.

**Distance Note**  
Distances shown on this plan are ground distances and can be converted to grid distances by multiplying by the combined scale factor of 0.99994.

**Bearing Note**  
Bearings are MTM grid, derived from the Smart-Net Real Time Network. GPS observations on reference points A and B, shown hereon, having a bearing of N 41° 50' 30" W and are referred to the Central Meridian of MTM Zone 9 (76° 30' West Longitude) Nad-83 (Original).

CO-ORDINATES WERE DERIVED FROM CAN-NET REAL TIME NETWORK OBSERVATIONS, MTM ZONE 9, N.A.D. 1983 (ORIGINAL).

POINT ID	NORTHING	EASTING
(A)	5023393.78	369646.86
(B)	5023484.61	369565.53
01919680005	5027191.26	361496.76
01919680105	5024915.16	373971.65

CO-ORDINATES ARE MTM ZONE 9, N.A.D. 1983 (ORIGINAL), TO URBAN ACCURACY PER SEC. 14 (2) OF O.R.G. 216/10, AND CANNOT, IN THEMSELVES, BE USED TO RE-ESTABLISH CORNERS OR BOUNDARIES SHOWN ON THIS PLAN.

**Surveyor's Certificate**  
I certify that:  
1. This survey and plan are correct and in accordance with the Surveys Act, the Surveyors Act and the Land Titles Act and the Regulations made under them.  
2. The survey was completed on the \_\_\_\_ day of \_\_\_\_\_, 2025.

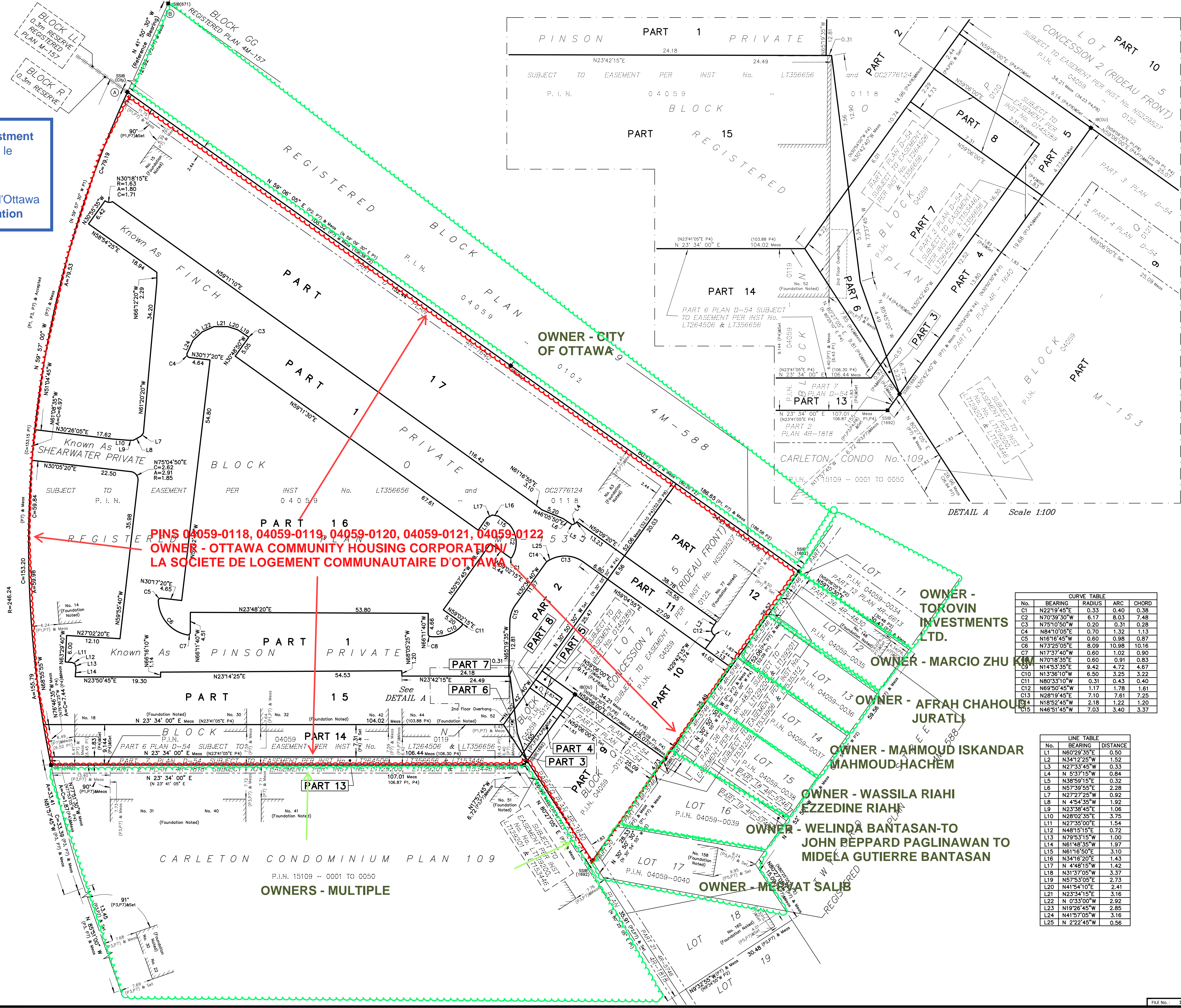
Date: \_\_\_\_\_  
Daniel Robinson  
Ontario Land Surveyor

This plan of survey relates to AOLS Plan Submission Form Number V-XXXXX

**Notes & Legend**

□	Denotes	Survey Monument Planted
■	"	Survey Monument Found
SIB	"	Standard Iron Bar
SSIB	"	Short Standard Iron Bar
IB	"	Iron Bar
CP	"	Concrete Pin
Meas	"	Measured
(P1)	"	Plan by (647) dated June 8, 1982
(P2)	"	Plan 4M-588
(P3)	"	Carleton Condominium Plan No. 109
(P4)	"	Expropriation Plan D-54
(P5)	"	Plan by (1287) dated May 7, 1991 (Job No. 66/91)
(P6)	"	Plan by (1287) dated October 17, 1998
(P7)	"	Plan by (1692) dated December 4, 2020 (Job No. 520-20)
(P8)	"	Registered Plan M-153
(P9)	"	Plan 4R-830

**FARLEY, SMITH & DENIS SURVEYING LTD.**  
ONTARIO LAND SURVEYORS  
CANADA LAND SURVEYORS  
Unit 275, 30 COLONNADE ROAD, OTTAWA, ONTARIO K2E 7J6  
TEL: (613) 727-8226 E-mail: info@fsdsurveys.ca



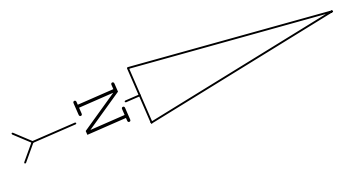
**PINS 04059-0118, 04059-0119, 04059-0120, 04059-0121, 04059-0122**  
**OWNER - OTTAWA COMMUNITY HOUSING CORPORATION / LA SOCIÉTÉ DE LOGEMENT COMMUNAUTAIRE D'OTTAWA**

**CURVE TABLE**

No.	BEARING	RADIUS	ARC	CHORD
C1	N22°19'45"E	0.33	0.40	0.38
C2	N70°39'30"W	6.17	8.03	7.48
C3	N75°10'50"W	0.20	0.31	0.28
C4	N84°10'05"E	0.70	1.32	1.13
C5	N16°16'45"W	0.60	0.98	0.87
C6	N73°25'05"E	8.09	10.98	10.16
C7	N17°37'40"W	0.60	1.02	0.90
C8	N70°18'35"E	0.60	0.91	0.83
C9	N14°53'35"E	9.42	4.72	4.67
C10	N13°36'10"W	6.50	3.25	3.22
C11	N80°33'10"W	0.31	0.43	0.40
C12	N69°50'45"W	1.17	1.78	1.61
C13	N28°19'45"E	7.10	7.61	7.25
C14	N18°52'45"W	2.18	1.22	1.20
C15	N48°51'45"W	7.03	3.40	3.37

**LINE TABLE**

No.	BEARING	DISTANCE
L1	N60°29'35"E	0.50
L2	N34°12'25"W	1.52
L3	N27°33'45"W	0.33
L4	N 5°37'15"W	0.84
L5	N38°59'15"E	0.32
L6	N57°39'55"E	2.28
L7	N27°27'25"W	0.92
L8	N 4°54'35"W	1.92
L9	N23°38'45"E	1.06
L10	N28°02'35"E	3.75
L11	N27°35'00"E	1.54
L12	N48°15'15"E	0.72
L13	N79°53'15"W	1.00
L14	N61°48'35"W	1.97
L15	N61°16'50"E	3.10
L16	N34°16'20"E	1.43
L17	N 4°48'15"W	1.42
L18	N33°37'05"W	3.37
L19	N57°53'05"E	2.73
L20	N41°54'10"E	2.41
L21	N23°34'15"E	3.16
L22	N 0°33'00"W	2.92
L23	N19°26'45"W	2.85
L24	N41°57'05"W	3.16
L25	N 2°22'45"W	0.56



**Committee of Adjustment**  
Received | Reçu le  
**2025-11-24**  
City of Ottawa | Ville d'Ottawa  
Comité de dérogation

I REQUIRE THIS PLAN TO BE DEPOSITED UNDER THE LAND TITLES ACT.  
DATE: \_\_\_\_\_  
DANIEL ROBINSON  
ONTARIO LAND SURVEYOR

**PLAN 4R-**  
RECEIVED AND DEPOSITED  
DATE: \_\_\_\_\_  
REPRESENTATIVE FOR LAND REGISTRAR FOR THE LAND TITLES DIVISION OF OTTAWA-CARLETON No. 4.

SCHEDULE				
PART	LOT/BLOCK	CONCESSION/PLAN	PIN	AREA (Sq.m.)
1	PART OF BLOCK O		PART OF 04059 - 0118	3944.5
2				374.2
3				0.5
4				24.1
5	ALL OF BLOCK P	4M-153	ALL OF 04059 - 0120	26.5
6				15.0
7				70.3
8				16.7
9	PART OF BLOCK Q		ALL OF 04059 - 0121	588.2
10				871.5
11	PART OF 5	2 (RIDEAU FRONT)	ALL OF 04059 - 0122	173.5
12				735.9
13	ALL OF BLOCK N		ALL OF 04059 - 0119	197.5
14				773.6
15	PART OF BLOCK O	4M-153	PART OF 04059 - 0118	2164.9
16				2787.0
17				4324.7

PARTS 1, 2, 15, 16 & 17 - COMPRISES ALL OF PIN 04059-0118  
PARTS 1, 2, 15, 16 & 17 - COMPRISES ALL OF BLOCK O  
PARTS 1, 2, 13 TO 17 (INCLUSIVE) - SUBJECT TO EASEMENT PER INST. No. OC2776124  
PARTS 5 & 8 - SUBJECT TO EASEMENT PER INST. No. OT45289  
PARTS 3, 4, 5 & 13 - SUBJECT TO EASEMENT PER INST. LT153446  
PARTS 3 TO 8 (INCLUSIVE), 13 & 14 - SUBJECT TO EASEMENT PER INST. No. LT264506  
PARTS 10, 11 & 12 - SUBJECT TO EASEMENT PER INST. No. NS229527  
PARTS 1 TO 8 (INCLUSIVE), 13 TO 17 (INCLUSIVE) - SUBJECT TO EASEMENT PER INST. No. LT356656

PLAN OF SURVEY OF  
**ALL OF BLOCKS N, O, P and PART OF BLOCK Q REGISTERED PLAN 4M-153 and PART OF LOT 5 CONCESSION 2 (RIDEAU FRONT) GEOGRAPHIC TOWNSHIP OF GLOUCESTER CITY OF OTTAWA**  
FARLEY, SMITH & DENIS SURVEYING LTD. 2020

Scale 1: 400  
0 5 10 15 20 30 40 metres

**Metric Note**  
Distances and coordinates on this plan are in metres and can be converted to feet by dividing by 0.3048.

**Distance Note**  
Distances shown on this plan are ground distances and can be converted to grid distances by multiplying by the combined scale factor of 0.99994.

**Bearing Note**  
Bearings are MTM grid, derived from the Smart-Net Real Time Network. GPS observations on reference points A and B, shown hereon, having a bearing of N 41° 30' 00" W and are referred to the Central Meridian of MTM Zone 9 (76° 30' West Longitude) Nad-83 (Original).

CO-ORDINATES WERE DERIVED FROM CAN-NET REAL TIME NETWORK OBSERVATIONS, MTM ZONE 9, N.A.D. 1983 (ORIGINAL).

POINT ID	NORTHING	EASTING
(A)	5023393.78	369646.86
(B)	5023484.61	369565.53
01919680005	5027191.26	361496.76
01919680105	5024915.16	373971.65

CO-ORDINATES ARE MTM ZONE 9, N.A.D. 1983 (ORIGINAL), TO URBAN ACCURACY PER SEC. 14 (2) OF O.R.G. 216/10, AND CANNOT, IN THEMSELVES, BE USED TO RE-ESTABLISH CORNERS OR BOUNDARIES SHOWN ON THIS PLAN.

**Surveyor's Certificate**  
I certify that:  
1. This survey and plan are correct and in accordance with the Surveys Act, the Surveyors Act and the Land Titles Act and the Regulations made under them.  
2. The survey was completed on the \_\_\_\_ day of \_\_\_\_\_, 2025.

Date: \_\_\_\_\_ Daniel Robinson  
Ontario Land Surveyor

This plan of survey relates to AOLS Plan Submission Form Number V-XXXXX

**Notes & Legend**

□	Denotes	Survey Monument Planted
■	"	Survey Monument Found
▬	"	Standard Iron Bar
▬	"	Short Standard Iron Bar
▬	"	Iron Bar
CP	"	Concrete Pin
Meas	"	Measured
(P1)	"	Plan by (647) dated June 8, 1982
(P2)	"	Plan 4M-588
(P3)	"	Carleton Condominium Plan No. 109
(P4)	"	Expropriation Plan D-54
(P5)	"	Plan by (1287) dated May 7, 1991 (Job No. 66/91)
(P6)	"	Plan by (1287) dated October 17, 1998
(P7)	"	Plan by (1692) dated December 4, 2020 (Job No. 520-20)
(P8)	"	Registered Plan M-153
(P9)	"	Plan 4R-830

**FARLEY, SMITH & DENIS SURVEYING LTD.**  
ONTARIO LAND SURVEYORS  
CANADA LAND SURVEYORS  
Unit 275, 30 COLONNADE ROAD, OTTAWA, ONTARIO K2E 7J6  
TEL: (613) 727-8226 E-mail: info@fsdsurveys.ca

**CURVE TABLE**

No.	BEARING	RADIUS	ARC	CHORD
C1	N22°19'45"E	0.33	0.40	0.38
C2	N70°39'30"W	6.17	8.03	7.48
C3	N75°10'50"W	0.20	0.31	0.28
C4	N84°10'05"E	0.70	1.32	1.13
C5	N16°16'45"W	0.60	0.98	0.87
C6	N7°32'05"E	8.09	10.98	10.16
C7	N17°37'40"W	0.60	1.02	0.90
C8	N70°18'35"E	0.60	0.91	0.83
C9	N14°53'35"E	9.42	4.72	4.67
C10	N13°36'10"W	6.50	3.25	3.22
C11	N80°33'10"W	0.31	0.43	0.40
C12	N69°50'45"W	1.17	1.78	1.61
C13	N28°19'45"E	7.10	7.61	7.25
C14	N18°52'45"W	2.18	1.22	1.20
C15	N48°51'45"W	7.03	3.40	3.37

**LINE TABLE**

No.	BEARING	DISTANCE
L1	N60°29'35"E	0.50
L2	N34°12'25"W	1.52
L3	N27°33'45"W	0.33
L4	N 5°37'15"W	0.84
L5	N38°59'15"E	0.32
L6	N57°39'55"E	2.28
L7	N27°27'25"W	0.92
L8	N 4°54'35"W	1.92
L9	N23°38'45"E	1.06
L10	N28°02'35"E	3.75
L11	N27°35'00"E	1.54
L12	N48°15'15"E	0.72
L13	N79°53'15"W	1.00
L14	N61°48'35"W	1.97
L15	N61°16'50"E	3.10
L16	N34°16'20"E	1.43
L17	N 4°48'15"W	1.42
L18	N33°37'05"W	3.37
L19	N57°53'05"E	2.73
L20	N41°54'10"E	2.41
L21	N23°34'15"E	3.16
L22	N 0°33'00"W	2.92
L23	N19°26'45"W	2.85
L24	N41°57'05"W	3.16
L25	N 2°22'45"W	0.56

PARTS 2, 4, 5, 7-10 = SEVERED LANDS (APPLICATION 2 OF 3), RETAINED LANDS (APPLICATION 3 OF 3), DOMINANT LANDS (APPLICATION 3 OF 3)

PARTS 1, 11 = SERVIENT (SPECIFIC EASEMENT) LANDS (APPLICATION 3 OF 3)

PARTS 1, 3, 6, 11-17 = SEVERED LANDS (APPLICATION 3 OF 3), RETAINED LANDS (APPLICATION 2 OF 3)

