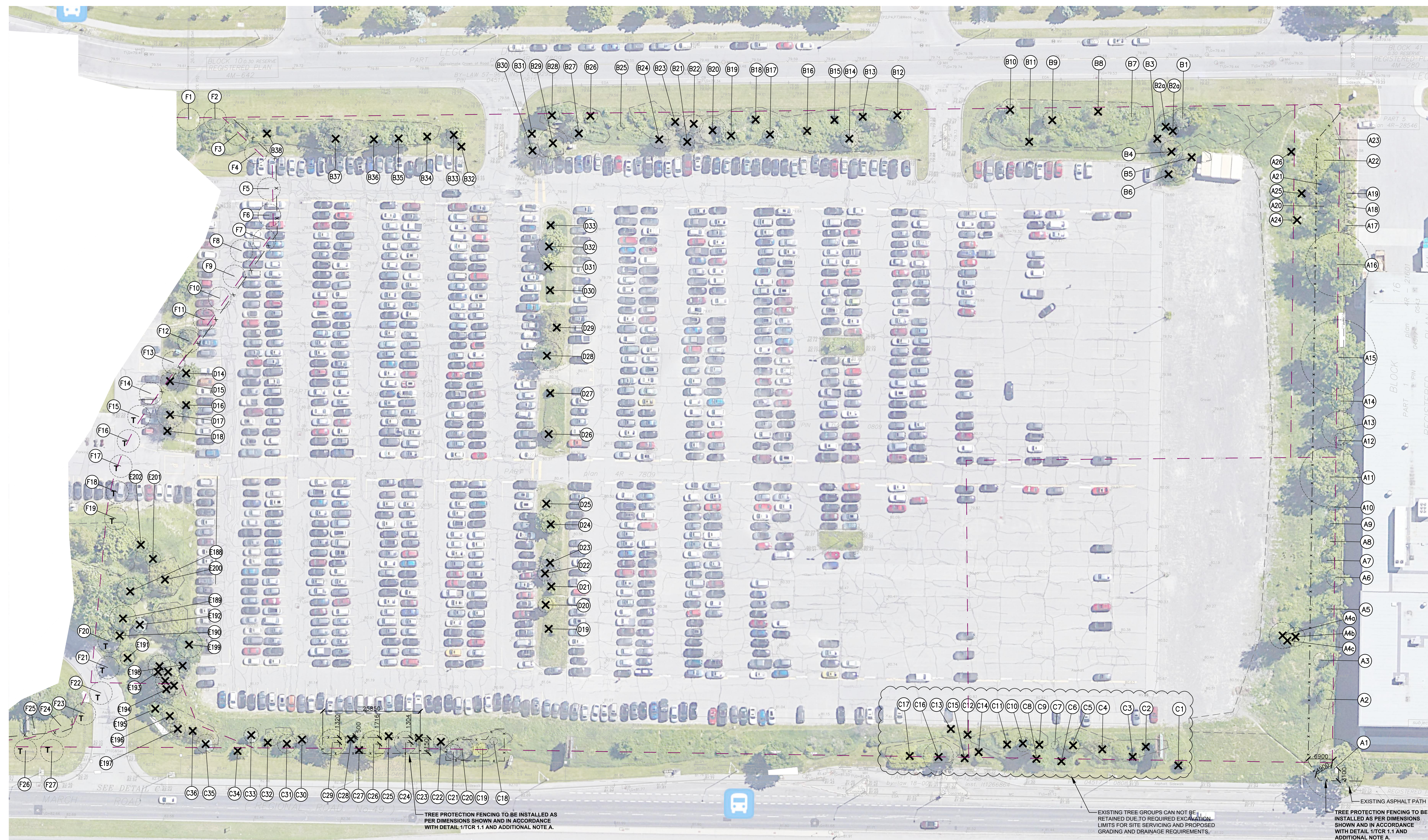


150 King Street W, Suite 1400, Toronto, ON M5H 1J9, Canada
 Tel: 416.601.3890

Surveyor: Anna O'Sullivan, Volebek Ltd.
 Planning Consultant: G. Wilkins@novatech-eng.com
 Civil Engineering: F. Chauvette@novatech-eng.com
 Architectural Site Planning: Barry, htm@gensler.com
 Electrical Engineering: Anna.drouin@northanderson.com
 Geotechnical Engineering: Eline.garretts@northanderson.com
 Mechanical Engineering: Josh and Andrew
 Civil Engineering: Josh and Andrew
 Geotechnical Engineering: Eline.garretts@northanderson.com
 Civil Engineering: Josh and Andrew
 Mechanical Engineering: Josh and Andrew
 Geotechnical Engineering: Eline.garretts@northanderson.com
 Civil Engineering: Josh and Andrew
 Mechanical Engineering: Josh and Andrew
 Geotechnical Engineering: Eline.garretts@northanderson.com

Date	Description
11-12-23	ISSUED FOR REVIEW / CO-ORDINATION
05-09-24	ISSUED FOR SPA
01-11-24	RE-ISSUED FOR SPA
31-01-25	RE-ISSUED FOR SPA
05-08-25	RE-ISSUED FOR SPA
29-09-25	RE-ISSUED FOR SPA
24-10-25	RE-ISSUED FOR SPA

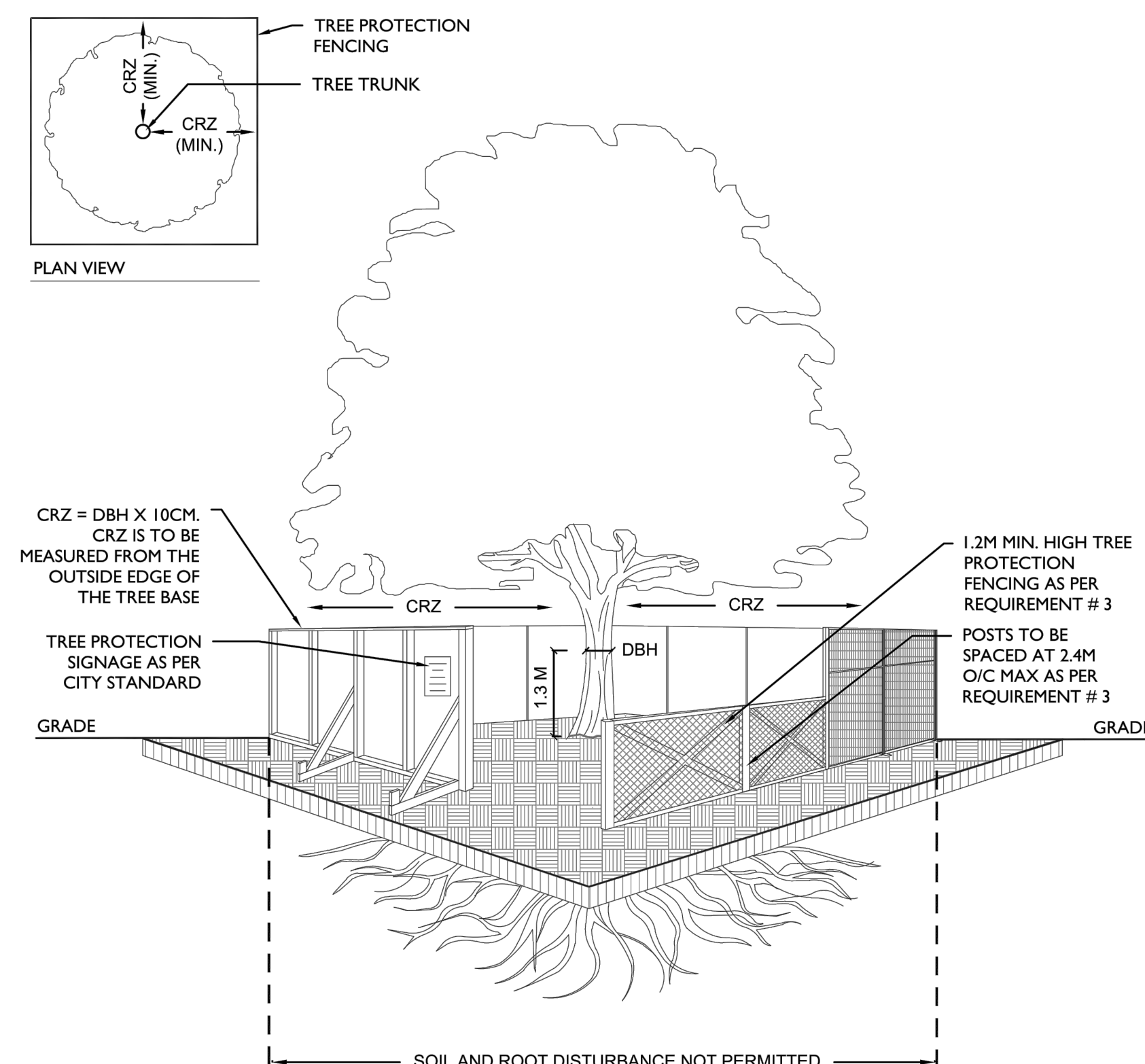


TREE PROTECTION FENCING TO BE INSTALLED AS PER DIMENSIONS SHOWN AND IN ACCORDANCE WITH DETAIL 1/TCR 1.1 AND ADDITIONAL NOTE A.

EXISTING TREE GROUPS CAN NOT BE RETAINED DUE TO REQUIRED EXCAVATION LIMITS FOR SITE SERVICING AND PROPOSED GRADING AND DRAINAGE REQUIREMENTS.

TREE PROTECTION FENCING TO BE INSTALLED AS PER DIMENSIONS SHOWN AND IN ACCORDANCE WITH DETAIL 1/TCR 1.1 AND ADDITIONAL NOTE A.

- LEGEND:**
- CRITICAL ROOT ZONE (CRZ)
 - EXISTING DECIDUOUS TREE
 - EXISTING CONIFEROUS TREE
 - TREE TO BE REMOVED
 - RECENTLY PLANTED TREE TO BE TRANSPLANTED
 - EXISTING TREE GROUP
 - EXISTING TREE NUMBER
 - EXISTING TREE GROUP NUMBER
 - BUILDING/STRUCTURE
 - HARD/IMPERMEABLE SURFACE
 - PROPERTY LINE
 - TREE PROTECTION FENCING



TREE PROTECTION REQUIREMENTS:

- PRIOR TO ANY WORK ACTIVITY WITHIN THE CRITICAL ROOT ZONE (CRZ = 10 X DIAMETER) OF A TREE, TREE PROTECTION FENCING MUST BE INSTALLED SURROUNDING THE CRITICAL ROOT ZONE, AND REMAIN IN PLACE UNTIL THE WORK IS COMPLETE.
- UNLESS PLANS ARE APPROVED BY CITY FORESTRY STAFF, FOR WORK WITHIN THE CRZ:
 - DO NOT PLACE ANY MATERIAL OR EQUIPMENT - INCLUDING OUTHOUSES;
 - DO NOT ATTACH ANY SIGNS, NOTICES OR POSTERS TO ANY TREE;
 - DO NOT RAISE OR LOWER THE EXISTING GRADE;
 - TUNNEL OR BORE WHEN DIGGING;
 - DO NOT DAMAGE THE ROOT SYSTEM, TRUNK, OR BRANCHES OF ANY TREE;
 - ENSURE THAT EXHAUST FUMES FROM ALL EQUIPMENT ARE NOT DIRECTED TOWARD ANY TREE CANOPY;
 - DO NOT EXTEND HARD SURFACE OR SIGNIFICANTLY CHANGE LANDSCAPING.
- TREE PROTECTION FENCING MUST BE AT LEAST 1.2M IN HEIGHT, AND CONSTRUCTED OF RIGID OR FRAMED MATERIALS (E.G. MODULOC - STEEL, PLYWOOD HOARDING, OR SNOW FENCE ON A 2"x4" WOOD FRAME) WITH POSTS 2.4M APART, SUCH THAT THE FENCE LOCATION CANNOT BE ALTERED. ALL SUPPORTS AND BRACING MUST BE PLACED OUTSIDE OF THE CRZ, AND INSTALLATION MUST MINIMIZE DAMAGE TO EXISTING ROOTS. (SEE DETAIL)
- THE LOCATION OF THE TREE PROTECTION FENCING MUST BE DETERMINED BY AN ARBORIST AND DETAILED ON ANY ASSOCIATED PLANS FOR THE SITE (E.G. TREE CONSERVATION REPORT, TREE INFORMATION REPORT, ETC). THE PLAN AND CONSTRUCTED FENCING MUST BE APPROVED BY CITY FORESTRY STAFF PRIOR TO THE COMMENCEMENT OF WORK.
- IF THE FENCED TREE PROTECTION AREA MUST BE REDUCED TO FACILITATE CONSTRUCTION, MITIGATION MEASURES MUST BE DESCRIBED BY AN ARBORIST AND APPROVED BY CITY FORESTRY STAFF. THESE MAY INCLUDE THE PLACEMENT OF PLYWOOD, WOOD CHIPS, OR STEEL PLATING OVER THE ROOTS FOR PROTECTION OR THE PROPER PRUNING AND CARE OF ROOTS WHERE ENCOUNTERED.

THE CITY'S TREE PROTECTION BY-LAW, 2020-340 PROTECTS BOTH CITY-OWNED TREES, CITY-WIDE, AND PRIVATELY OWNED TREES WITHIN THE URBAN AREA. PLEASE REFER TO WWW.OTTAWA.CA/TREELAW FOR MORE INFORMATION ON HOW THE TREE BY-LAW APPLIES.

NOTES:

- NOT ALL TREE LOCATIONS WERE SHOWN ON THE TOPOGRAPHICAL SURVEY, THEREFORE THE LOCATIONS OF SOME VEGETATION ARE APPROXIMATE AND BASED ON AERIAL PHOTOS AND SITE OBSERVATION.
- VEGETATION NUMBERING MAY REFER TO INDIVIDUAL TREES, LARGE GROUPS OF SHRUBS, OR GROUPS OF TREES GROWING IN A DENSE STAND.
- AERIAL PHOTO SOURCE: GOOGLE-EARTH 2018
- REFER TO LANDSCAPE DRAWINGS FOR PROPOSED TREE PLANTING LOCATIONS AND SPECIES.

EXISTING CONDITION:

THE SUBJECT SITE COMPRISES 4.49 HA OF LAND BOUNDED BY MARCH ROAD, TERRY FOX DRIVE AND LEGGETT DRIVE. THE SOUTH BOUNDARY OF THE SUBJECT SITE IS IRREGULAR AND APPROXIMATELY 50 M SOUTH OF THE OFFICE BUILDING. THE SUBJECT SITE IS CURRENTLY OCCUPIED BY A LARGE SURFACE PARKING THAT WAS BEING USED BY THE OFFICE BUILDING TO THE NORTH.

THE EXISTING SITE CONSISTS PRIMARILY OF HARD SURFACING (ASPHALT PARKING LOT) WITH PERIMETER TREE AND SHRUB PLANTING AND A LINE OF TREE PLANTING DIVIDING THE EXPANSE OF ASPHALT.

THE EXISTING TREE COVER CONSISTS OF A MIX OF CONIFEROUS AND DECIDUOUS TREES PLANTED APPROXIMATELY 25 YEARS AGO WHEN THE EXISTING PARKING LOT WAS EXPANDED. THERE WAS A HIGH PERCENTAGE OF WHITE ASH INCLUDED IN THE PLANTING WHICH HAVE SINCE DIED OR ARE IN POOR CONDITION, LIKELY DUE TO EMERALD ASH BORER BEETLE. AREAS OF SHRUB PLANTING EXIST AROUND THE PERIMETER OF THE PARKING WHICH INCLUDED A MIX OF NATIVE SHRUBS SUCH AS HONEYSUCKLE AND SUMAC, HOWEVER, MANY PLANTING BEDS HAVE BECOME OVERGROWN WITH IVY AND INVASIVE SPECIES SUCH AS MANITоба MAPLE AND BUCKTHORN HAVE ENCRUSTED.

THE LINE OF TREES TO THE SOUTH OF THE SITE INCLUDES A NUMBER OF MATURE BURR OAK TREES AND WHITE SPRUCE IN GOOD CONDITION AND IS A PRIORITY AREA TO BE CONSERVED.

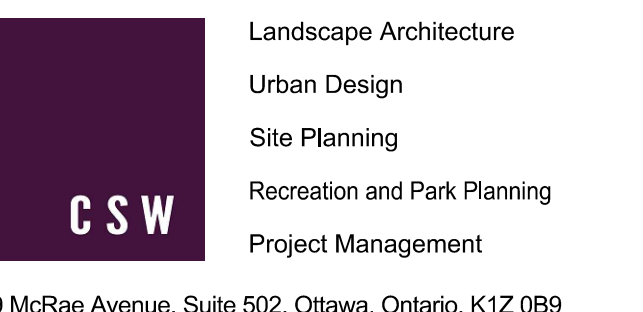
THE SITE IS NOT DESIGNATED AS PRIMARY, SUPPORTING OR CONTRIBUTING LANDS ON THE CITY OF OTTAWA'S GREENSPACE MASTER PLAN.

THE SITE SITS WITHIN A DESIGN PRIORITY AREA FOR KANATA NORTH ECONOMIC DISTRICT. THE LEGAL DESCRIPTION OF THE SUBJECT SITE IS: PARTS 5, 7 AND 8 ON 4R-35453

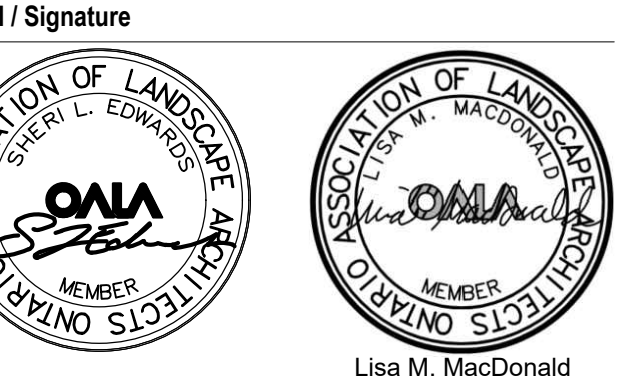
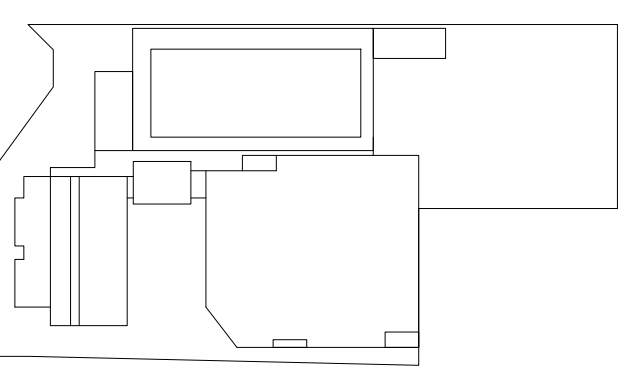
Scale: 1:30



NOT FOR CONSTRUCTION



319 McRae Avenue, Suite 502, Ottawa, Ontario, K1Z 0B9
 Tel: (613) 729-4536



Project Name: **Nokia Ottawa Campus**

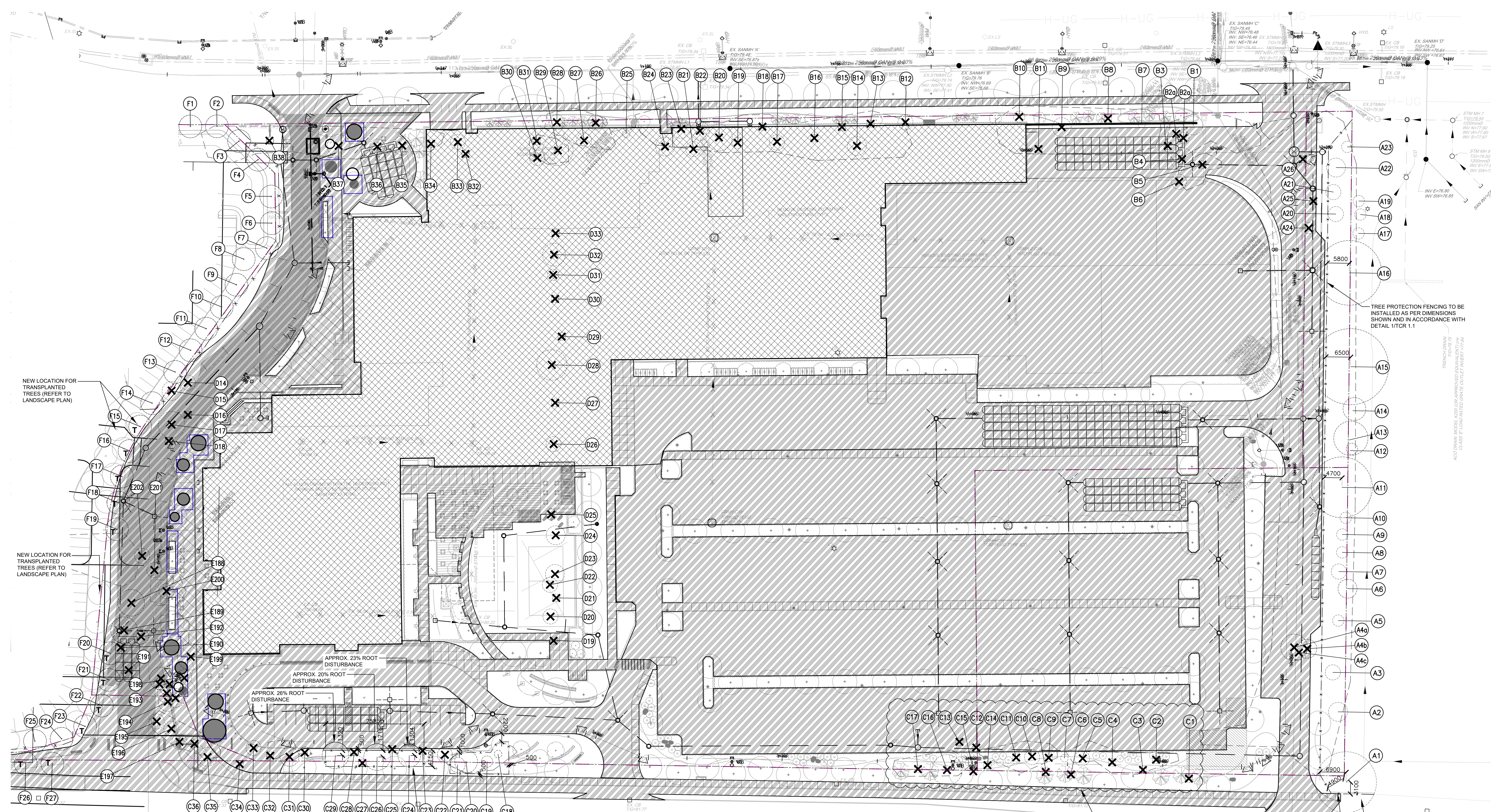
Project Number: **027.7946.000** (CSW PROJ. NO. 213-02)

Description: **TREE CONSERVATION REPORT EXISTING CONDITION SHEET 1 OF 3**

Scale: **1 : 400**

TCR 1.0

Date	Description
11-12-23	ISSUED FOR REVIEW / CO-ORDINATION
05-09-24	ISSUED FOR SPA
01-11-24	RE-ISSUED FOR SPA
31-01-25	RE-ISSUED FOR SPA
05-08-25	RE-ISSUED FOR SPA
29-09-25	RE-ISSUED FOR SPA
24-10-25	RE-ISSUED FOR SPA



NEW LOCATION FOR TRANSPLANTED TREES (REFER TO LANDSCAPE PLAN)

NEW LOCATION FOR TRANSPLANTED TREES (REFER TO LANDSCAPE PLAN)

APPROX. 23% ROOT DISTURBANCE

APPROX. 20% ROOT DISTURBANCE

APPROX. 28% ROOT DISTURBANCE

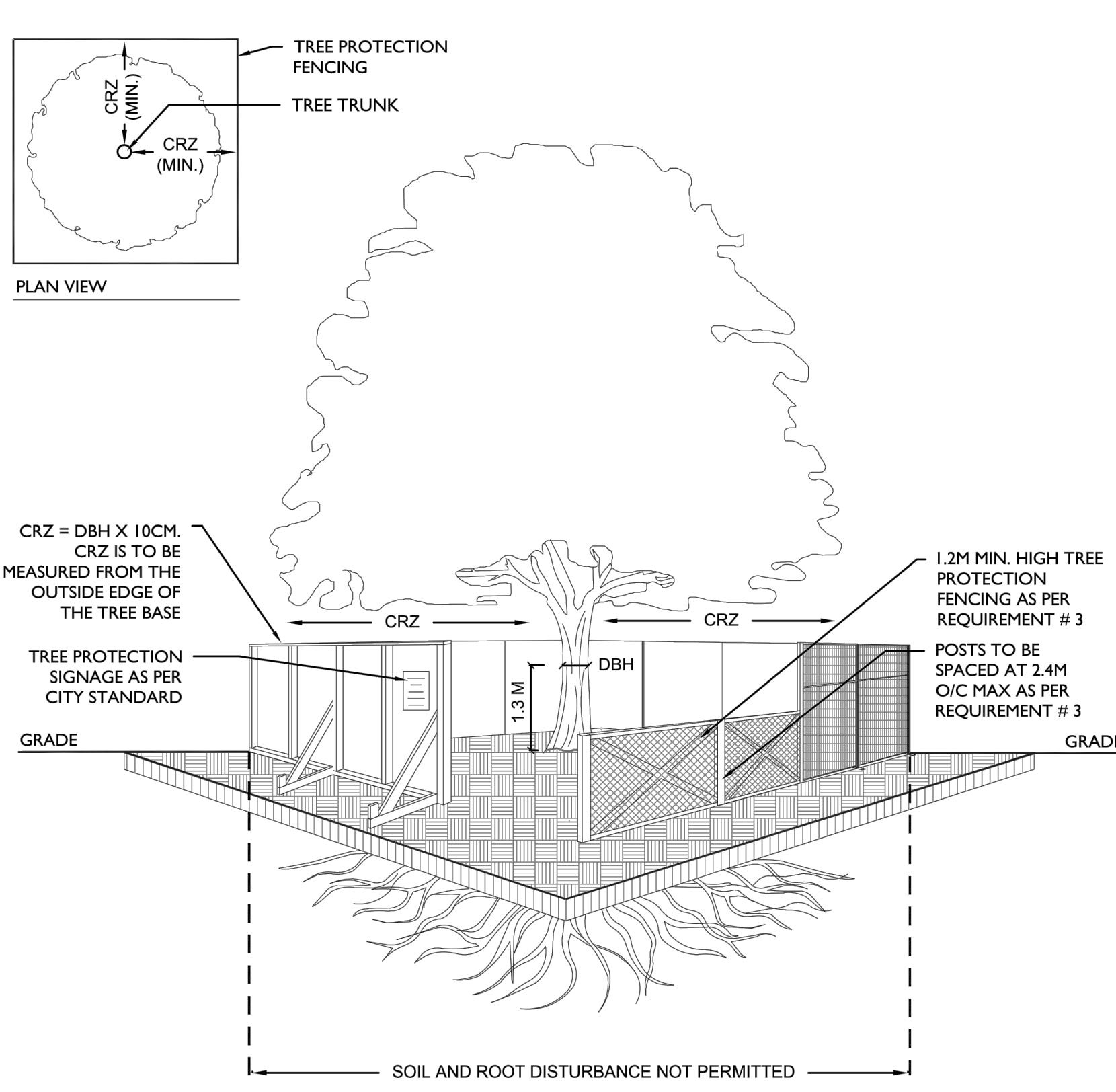
TREE PROTECTION FENCING TO BE INSTALLED AS PER DIMENSIONS SHOWN AND IN ACCORDANCE WITH DETAIL 1/TCR 1.1 AND ADDITIONAL NOTE A.

EXISTING TREE GROUPS CAN NOT BE RETAINED DUE TO REQUIRED EXCAVATION LIMITS FOR SITE SERVICING AND PROPOSED GRADING AND DRAINAGE REQUIREMENTS.

EXISTING ASPHALT PATH

TREE PROTECTION FENCING TO BE INSTALLED AS PER DIMENSIONS SHOWN AND IN ACCORDANCE WITH DETAIL 1/TCR 1.1 AND ADDITIONAL NOTE A.

- LEGEND:**
- CRITICAL ROOT ZONE (CRZ)
 - EXISTING DECIDUOUS TREE
 - EXISTING CONIFEROUS TREE
 - TREE TO BE REMOVED
 - RECENTLY PLANTED TREE TO BE TRANSPLANTED
 - EXISTING TREE GROUP
 - EXISTING TREE NUMBER
 - EXISTING TREE GROUP NUMBER
 - BUILDING/STRUCTURE
 - HARD/IMPERMEABLE SURFACE
 - PROPERTY LINE
 - TREE PROTECTION FENCING



- TREE PROTECTION REQUIREMENTS:**
- PRIOR TO ANY WORK ACTIVITY WITHIN THE CRITICAL ROOT ZONE (CRZ = 10 X DIAMETER) OF A TREE, TREE PROTECTION FENCING MUST BE INSTALLED SURROUNDING THE CRITICAL ROOT ZONE, AND REMAIN IN PLACE UNTIL THE WORK IS COMPLETE.
 - UNLESS PLANS ARE APPROVED BY CITY FORESTRY STAFF, FOR WORK WITHIN THE CRZ:
 - DO NOT PLACE ANY MATERIAL OR EQUIPMENT - INCLUDING OUTHOUSES;
 - DO NOT ATTACH ANY SIGNS, NOTICES OR POSTERS TO ANY TREE;
 - DO NOT RAISE OR LOWER THE EXISTING GRADE;
 - TUNNEL OR BORE WHEN DIGGING;
 - DO NOT DAMAGE THE ROOT SYSTEM, TRUNK, OR BRANCHES OF ANY TREE;
 - ENSURE THAT EXHAUST FUMES FROM ALL EQUIPMENT ARE NOT DIRECTED TOWARD ANY TREE CANOPY;
 - DO NOT EXTEND HARD SURFACE OR SIGNIFICANTLY CHANGE LANDSCAPING.
 - TREE PROTECTION FENCING MUST BE AT LEAST 1.2M IN HEIGHT, AND CONSTRUCTED OF RIGID OR FRAMED MATERIALS (E.G. MODULOC - STEEL, PLYWOOD HOARDING, OR SNOW FENCE ON A 2"x4" WOOD FRAME) WITH POSTS 2.4M APART, SUCH THAT THE FENCE LOCATION CANNOT BE ALTERED. ALL SUPPORTS AND BRACING MUST BE PLACED OUTSIDE OF THE CRZ AND INSTALLATION MUST MINIMIZE DAMAGE TO EXISTING ROOTS. (SEE DETAIL)
 - THE LOCATION OF THE TREE PROTECTION FENCING MUST BE DETERMINED BY AN ARBORIST AND DETAILED ON ANY ASSOCIATED PLANS FOR THE SITE (E.G. TREE CONSERVATION REPORT, TREE INFORMATION REPORT, ETC). THE PLAN AND CONSTRUCTED FENCING MUST BE APPROVED BY CITY FORESTRY STAFF PRIOR TO THE COMMENCEMENT OF WORK.
 - IF THE FENCED TREE PROTECTION AREA MUST BE REDUCED TO FACILITATE CONSTRUCTION, MITIGATION MEASURES MUST BE PRESCRIBED BY AN ARBORIST AND APPROVED BY CITY FORESTRY STAFF. THESE MAY INCLUDE THE PLACEMENT OF PLYWOOD, WOOD CHIPS, OR STEEL PLATING OVER THE ROOTS FOR PROTECTION OR THE PROPER PRUNING AND CARE OF ROOTS WHERE ENCOUNTERED.
- THE CITY'S TREE PROTECTION BY-LAW, 2020-340 PROTECTS BOTH CITY-OWNED TREES, CITY-WIDE, AND PRIVATELY OWNED TREES WITHIN THE URBAN AREA. PLEASE REFER TO WWW.OTTAWA.CA/TREEBYLAW FOR MORE INFORMATION ON HOW THE TREE BY-LAW APPLIES.

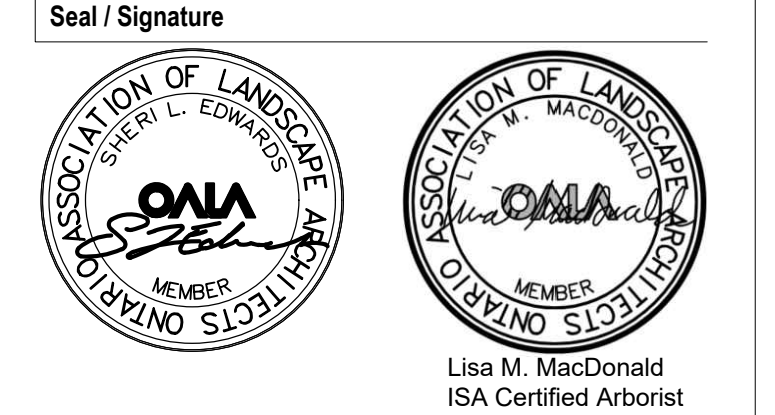
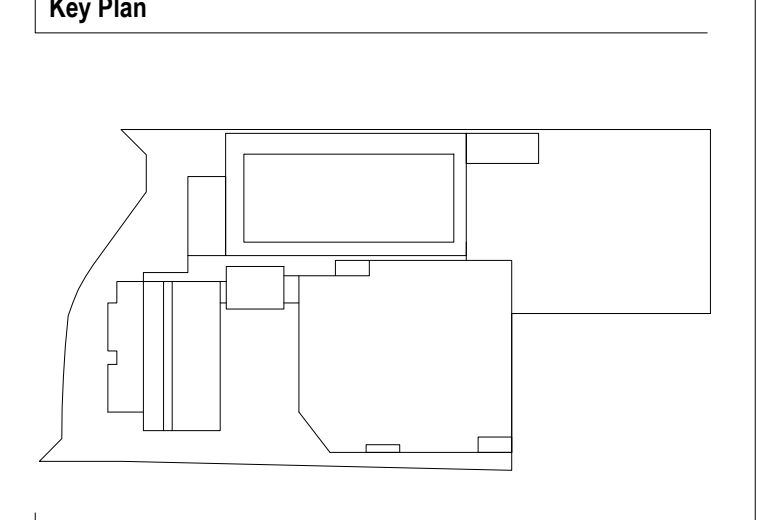
- ADDITIONAL NOTES:**
- WHERE TREE PROTECTION MEASURES MUST BE REDUCED WITHIN THE CRZ OF A TREE AND ROOTS ARE ENCOUNTERED DURING EXCAVATION, APPROPRIATE MITIGATION MEASURES SHOULD BE FOLLOWED AS PER THE CONSTRUCTION SPECIFICATIONS. THESE MEASURES MAY INCLUDE BUT ARE NOT LIMITED TO THE FOLLOWING:
 - HYDRO-VAC TO EXPOSE TREE ROOTS
 - ALL ROOT SYSTEMS SHALL BE EXPOSED AND BACKFILLED IN ONE CONTINUOUS OPERATION WHEREVER POSSIBLE TO MINIMIZE DESICCATION OF THE ROOT SYSTEM.
 - ANY DAMAGED ROOTS, OR ROOTS REQUIRED TO BE REMOVED FOR CONSTRUCTION PURPOSES SHALL BE PRUNED BY A QUALIFIED ARBORIST OR OTHER TREE PROFESSIONAL. ALL PRUNING OF TREE ROOTS TO BE IN ACCORDANCE WITH GOOD ARBORICULTURAL PRACTICES.
 - WET FILTER CLOTH SHALL BE USED TO TEMPORARILY COVER AND PROTECT THE EXPOSED TREE ROOTS. FILTER CLOTH SHALL BE INSTALLED IMMEDIATELY FOLLOWING ROOT EXPOSURE, AND SHALL BE HELD IN PLACE WITH APPROVED PINS OR SPIKES UNTIL BACKFILLING TAKES PLACE.
 - EXPOSED ROOTS SHALL BE KEPT CONTINUOUSLY MOIST DURING EXCAVATION.
 - NOT ALL TREE LOCATIONS WERE SHOWN ON THE TOPOGRAPHICAL SURVEY, THEREFORE THE LOCATIONS OF SOME VEGETATION ARE APPROXIMATE AND BASED ON AERIAL PHOTOS AND SITE OBSERVATION.
 - VEGETATION NUMBERING MAY REFER TO INDIVIDUAL TREES, LARGE GROUPS OF SHRUBS, OR GROUPS OF TREES GROWING IN A DENSE STAND.
 - AERIAL PHOTO SOURCE: GOOGLE-EARTH 2018
 - REFER TO LANDSCAPE DRAWINGS FOR PROPOSED TREE PLANTING LOCATIONS AND SPECIES.

NOT FOR CONSTRUCTION

C S W

Landscape Architecture
 Urban Design
 Site Planning
 Recreation and Park Planning
 Project Management

319 McRae Avenue, Suite 502, Ottawa, Ontario, K1Z 0B9
 Tel: (613) 729-4536



Project Name: Nokia Ottawa Campus

Project Number: 027.7946.000 (CSW PROJ. NO. 213-02)

Description: TREE CONSERVATION REPORT
 PROPOSED DEVELOPMENT
 SHEET 2 OF 3

Scale: 1 : 400

