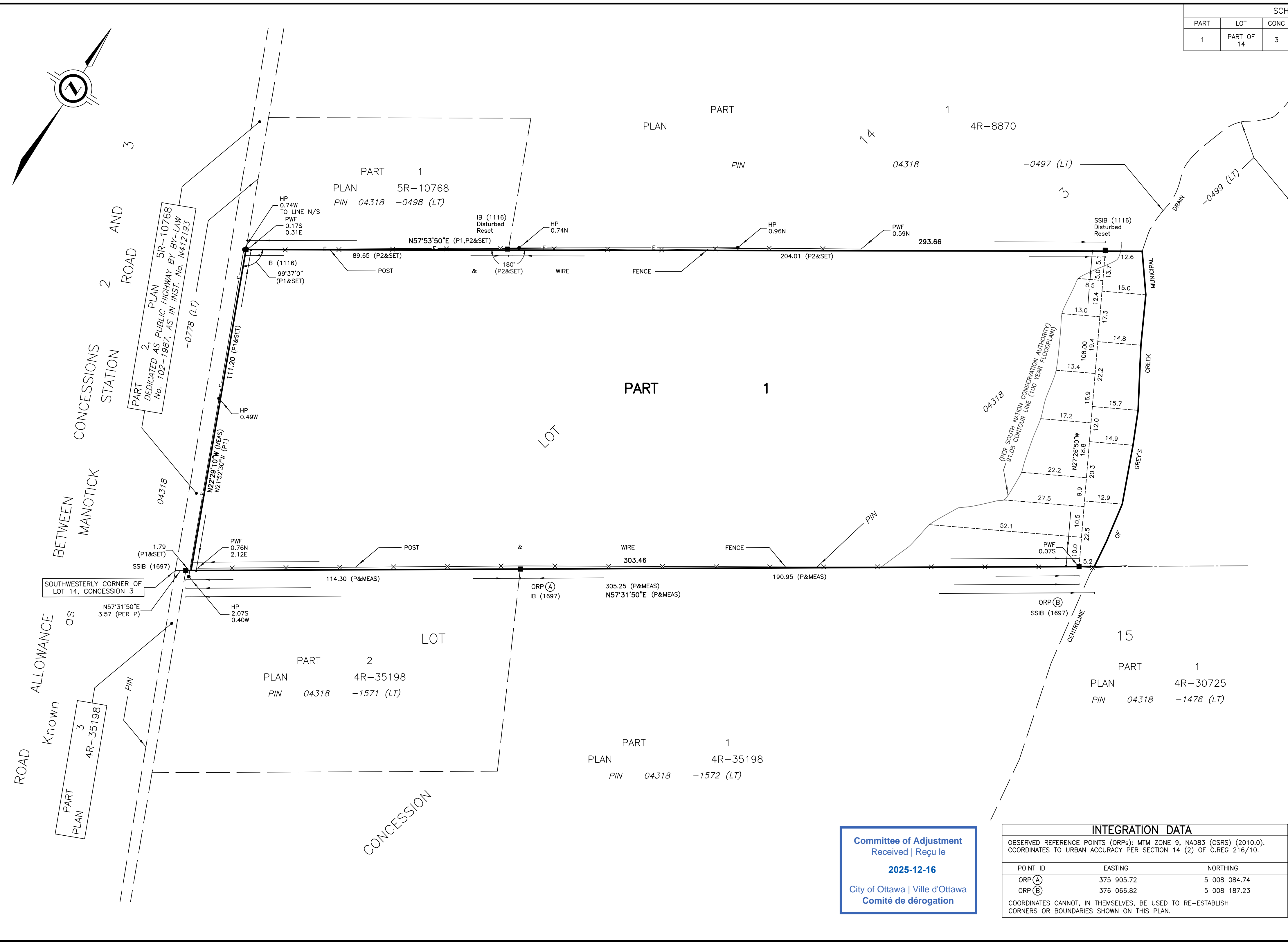
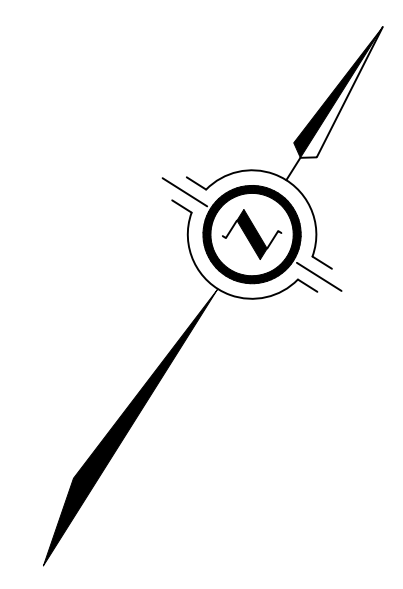


SCHEDULE				
PART	LOT	CONC	PIN	AREA sq. m.
1	PART OF 14	3	PART OF 04318-0499 (LT)	33887.7



PLAN OF SURVEY OF
**PART OF LOT 14
 CONCESSION 3**
 GEOGRAPHIC TOWNSHIP OF OSGOODE
 CITY OF OTTAWA

SCALE 1 : 750

THE INTENDED PLOT SIZE OF THIS PLAN IS 762mm IN WIDTH BY 457mm IN HEIGHT WHEN PLOTTED AT A SCALE OF 1:750

J.D. BARNES LIMITED
 DISTANCES AND/OR COORDINATES SHOWN ON THIS PLAN ARE IN METRIC METRES AND CAN BE CONVERTED TO FEET BY DIVIDING BY 0.3048.

NOTES

BEARINGS ARE MTM GRID, AND DERIVED FROM GLOBAL NAVIGATION SATELLITE SYSTEMS (GNSS) BY REAL TIME NETWORK (RTN) OBSERVATIONS, MTM ZONE 9, NAD 83, (CSRS) (2010.0).

DISTANCES ARE GROUND AND CAN BE CONVERTED TO GRID BY MULTIPLYING BY THE COMBINED SCALE FACTOR OF 0.999955.

FOR BEARING COMPARISONS, A ROTATION OF 0°36'40" COUNTER-CLOCKWISE WAS APPLIED TO BEARINGS ON P1 AND P2.

LEGEND

■	DENOTES	SURVEY MONUMENT FOUND
□	DENOTES	SURVEY MONUMENT SET
SSIB	DENOTES	SHORT STANDARD IRON BAR
IB	DENOTES	IRON BAR
MEAS	DENOTES	MEASURED
PWF	DENOTES	POST & WIRE FENCE
P	DENOTES	PLAN 4R-35198
P1	DENOTES	PLAN 5R-10768
P2	DENOTES	PLAN 4R-8870
1116	DENOTES	W.J. JOHNSTON, O.L.S.
1697	DENOTES	J.P. SHIPMAN, O.L.S.
INST.	DENOTES	INSTRUMENT
No.	DENOTES	NUMBER
HP	DENOTES	HYDRO POLE
E	DENOTES	OVERHEAD HYDRO CABLE

N=NORTH / S=SOUTH / E=EAST / W=WEST

SURVEYOR'S CERTIFICATE

I CERTIFY THAT:

- THIS SURVEY AND PLAN ARE CORRECT AND IN ACCORDANCE WITH THE SURVEYS ACT, THE SURVEYORS ACT AND THE LAND TITLES ACT AND THE REGULATIONS MADE UNDER THEM.
- THE SURVEY WAS COMPLETED ON

DATE _____

GEORGE ZERVOS
 ONTARIO LAND SURVEYOR

THIS PLAN OF SURVEY RELATES TO AOLS PLAN SUBMISSION FORM NUMBER V-113841

J.D. BARNES LIMITED
 LAND INFORMATION SPECIALISTS
 62 STEACIE DRIVE, SUITE 103, KANATA, ON K2K 2A9
 T: (613) 731-7244 F: (613) 254-8659 www.jdbarnes.com

DRAWN BY: RP	CHECKED BY: GZ	REFERENCE NO.: 25-10-068-01
DATED: OCTOBER 23, 2025		

Committee of Adjustment
 Received | Reçu le
 2025-12-16
 City of Ottawa | Ville d'Ottawa
 Comité de dérogation

INTEGRATION DATA

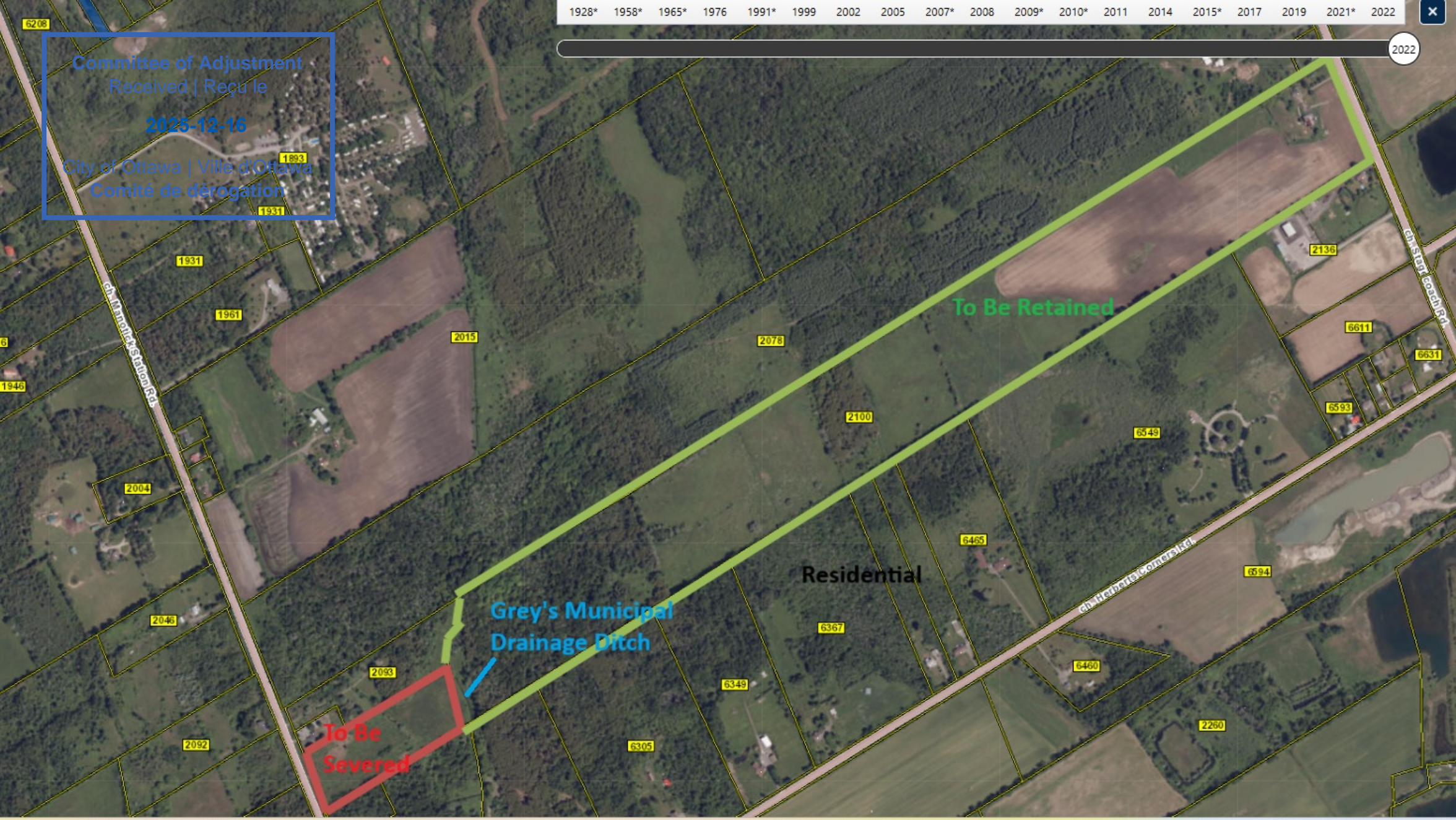
OBSERVED REFERENCE POINTS (ORPs): MTM ZONE 9, NAD83 (CSRS) (2010.0). COORDINATES TO URBAN ACCURACY PER SECTION 14 (2) OF O.REG 216/10.

POINT ID	EASTING	NORTHING
ORP (A)	375 905.72	5 008 084.74
ORP (B)	376 066.82	5 008 187.23

COORDINATES CANNOT, IN THEMSELVES, BE USED TO RE-ESTABLISH CORNERS OR BOUNDARIES SHOWN ON THIS PLAN.

FILE: C:\25-10-068-01 Manotick Station Project\Drawings\PLAN\25-10-068-01-RPLAN.dwg

Committee of Adjustment
Received | Reçu le
2025-12-16
City of Ottawa | Ville d'Ottawa
Comité de dérogation



To Be Retained

Grey's Municipal
Drainage Ditch

To Be
Severed

Residential

Ch. Innoche Station Rd

Ch. Herberle Comerston

Ch. St-Jean Leach Rd

6208

1893

1931

1931

1961

2015

2078

2100

2136

6611

6631

6593

6549

2004

1946

2046

6465

6594

2093

6367

6349

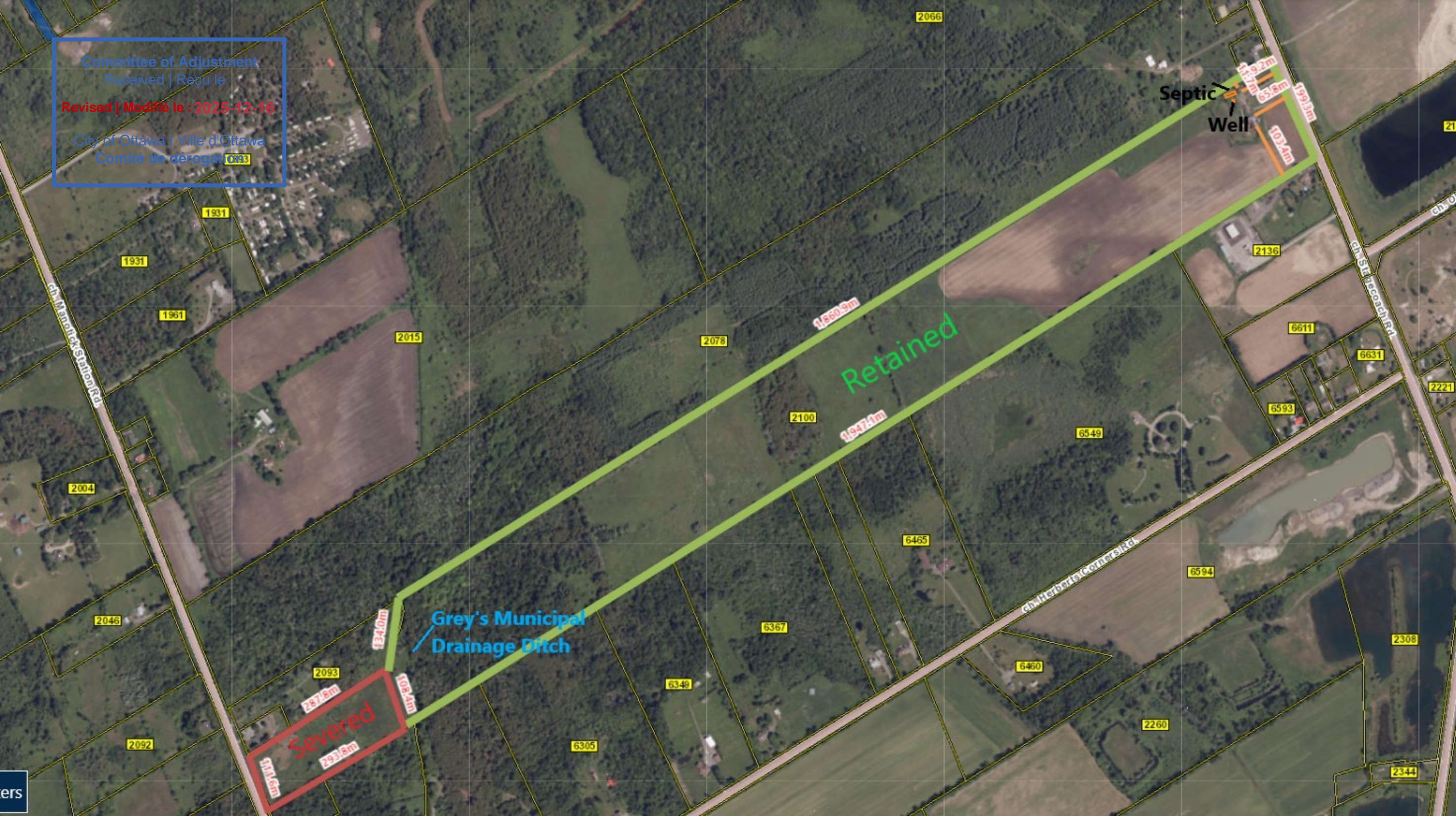
6460

2092

6305

2260

Committee of Adjustment
Received | Reçu le
Revised | Modifié le : 2025-12-18
City of Ottawa | Ville d'Ottawa
Comité de dérogation 033



Committee of Adjustment
Received | Reçu le

Revised | Modifié le : 2025-12-16

City of Ottawa | Ville d'Ottawa
Comité de dérogation

