

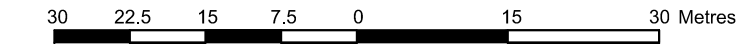
Committee of Adjustment
Received | Reçu le
Revised | Modifié le : 2025-11-27
City of Ottawa | Ville d'Ottawa
Comité de dérogation

PLAN OF SURVEY OF
PART OF LOT 20
CONCESSION 3
GEOGRAPHIC TOWNSHIP OF
MARCH
NOW IN THE
CITY OF OTTAWA
Surveyed by Annis, O'Sullivan, Vollebek Ltd.

PRELIMINARY

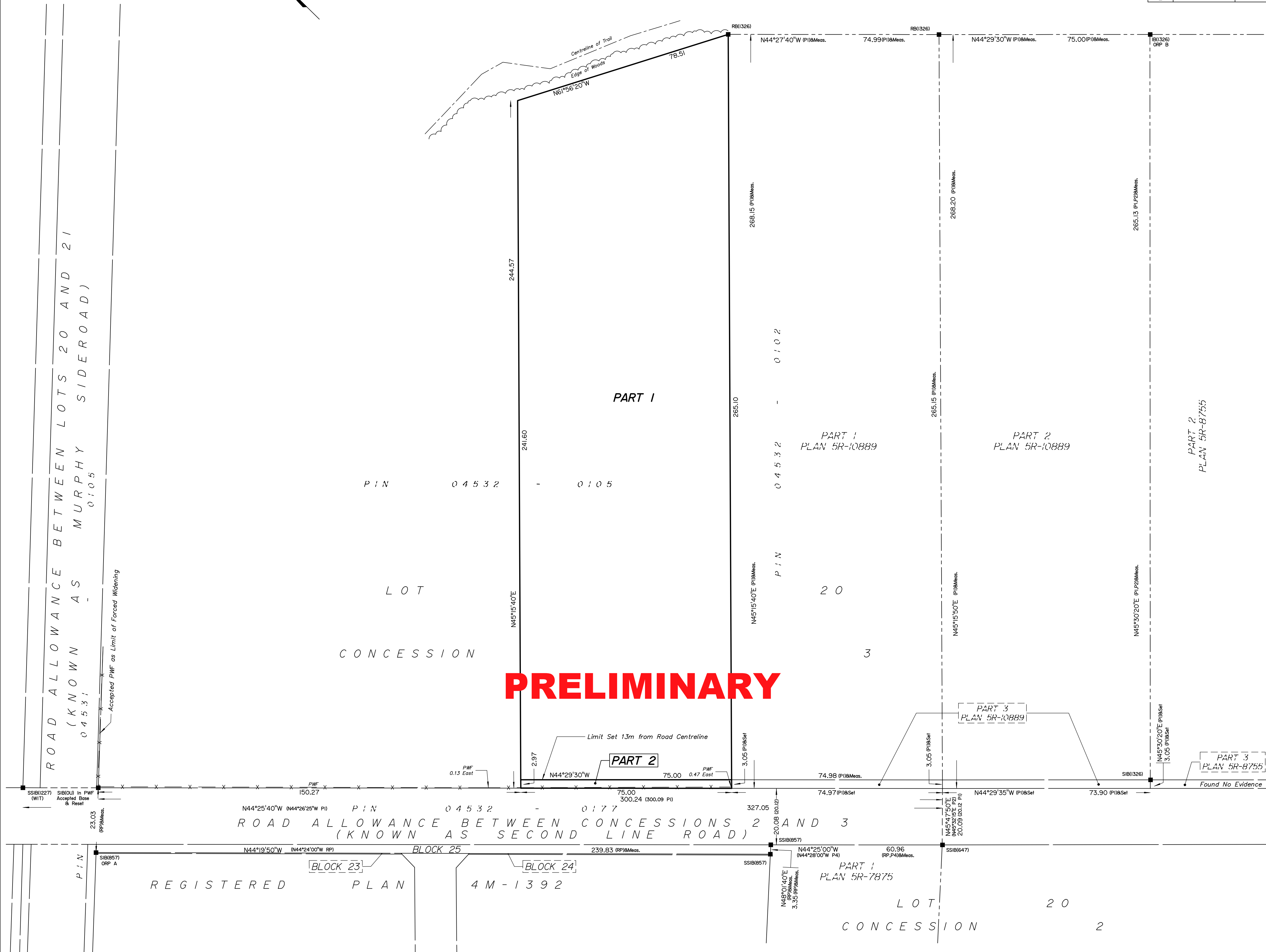
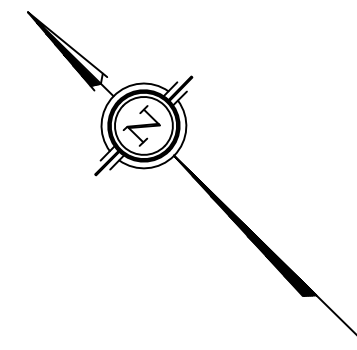
SCHEDULE			
PART	PART OF LOT	CONCESSION	PART OF PIN
1	20	3	04532 - 0105
2			

Scale 1 : 750



The intended plot size of the plan is 914 mm in width by 610 mm in height when plotted at a scale of 1:750.

Metric
DISTANCES AND COORDINATES SHOWN ON THIS PLAN
ARE IN METRES AND CAN BE CONVERTED TO FEET BY
DIVIDING BY 0.3048.



Notes & Legend

- Denotes Survey Monument Planted
- Denotes Survey Monument Found
- SIB Standard Iron Bar
- SSIB Short Standard Iron Bar
- IB Iron Bar
- RB Rock Bar
- (WIT) Witness
- Meas. Measured
- (RP) Registered Plan 4M-1392
- (P1) Plan 5R-10889
- (P2) Plan 5R-8755
- (P3) Plan 5R-12372
- (P4) Plan 5R-7875
- PWF Post and Wire Fence
- RF Rail Fence

Distances shown on this plan are ground distances and can be converted to grid distances by multiplying by the combined scale factor of 0.999904.

Bearings are grid, derived from Can-Net 2016 Real Time Network GPS observations on reference points (ORP A and ORP B), shown hereon, having a bearing between them of N82°17'50"W and are referenced to the Central Meridian of MTM Zone 9 (76°30' West Longitude) NAD-83 (CSRS)(2010).

Coordinates are derived from Can-Net 2016 Real Time Network GPS observations and are referred to the Central Meridian of MTM Zone 9 (76°30' West Longitude) NAD-83 (CSRS)(2010).

Coordinate values are to urban accuracy in accordance with O. Reg. 216/10.

• ORP A Northing 5027513.19 Easting 343969.51
• ORP B Northing 5027448.60 Easting 344439.69

Caution: Coordinates cannot, in themselves, be used to re-establish corners or boundaries shown on this plan.

Surveyor's Certificate

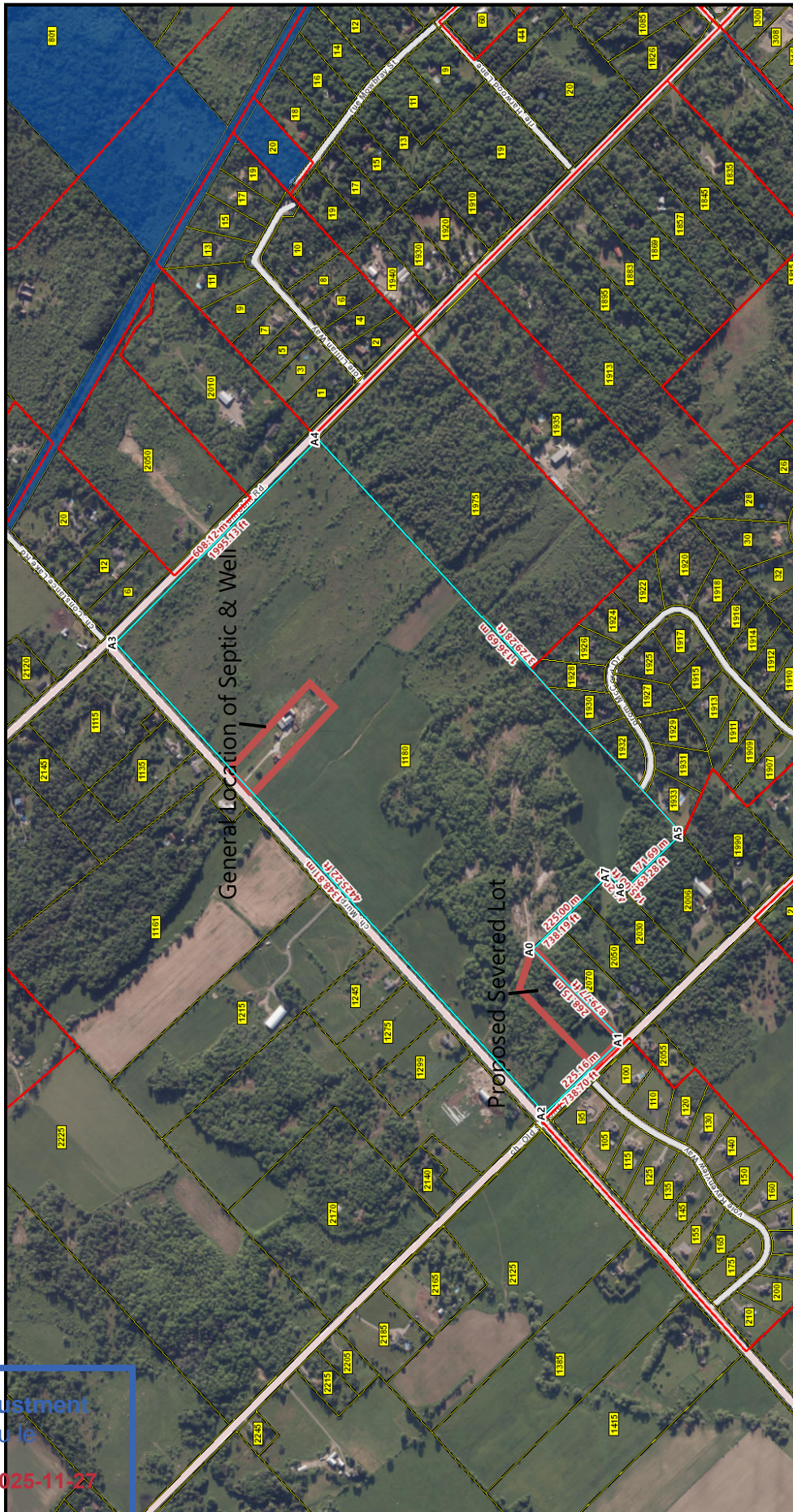
- I CERTIFY THAT:
- This survey and plan are correct and in accordance with the Surveys Act, the Surveyors Act and the Land Titles Act and the regulations made under them.
 - The survey was completed on the ___ day of _____, 2025.

MMM DD YYYY Date EMMETT KETCHUM Ontario Land Surveyor

This Plan of Survey relates to AOLS Plan Submission Form number V-XXXXX.

ANNIS, O'SULLIVAN, VOLLEBEK LTD.
113 Prescott Street, Box 1340
Kemptville, Ontario K0G 1J0
Phone: (613) 258-1717
Email: Kemptville@aovltd.com

Ontario Land Surveyors Job No. K-14236-25 Murphy P/L20 Con3 MA R D3 M.



General Location of Septic & Well

Proposed Severed Lot

Committee of Adjustment
 Received | Reçu le
 Revised | Modifié le : 2025-11-27
 City of Ottawa | Ville d'Ottawa
 Comité de dérogation