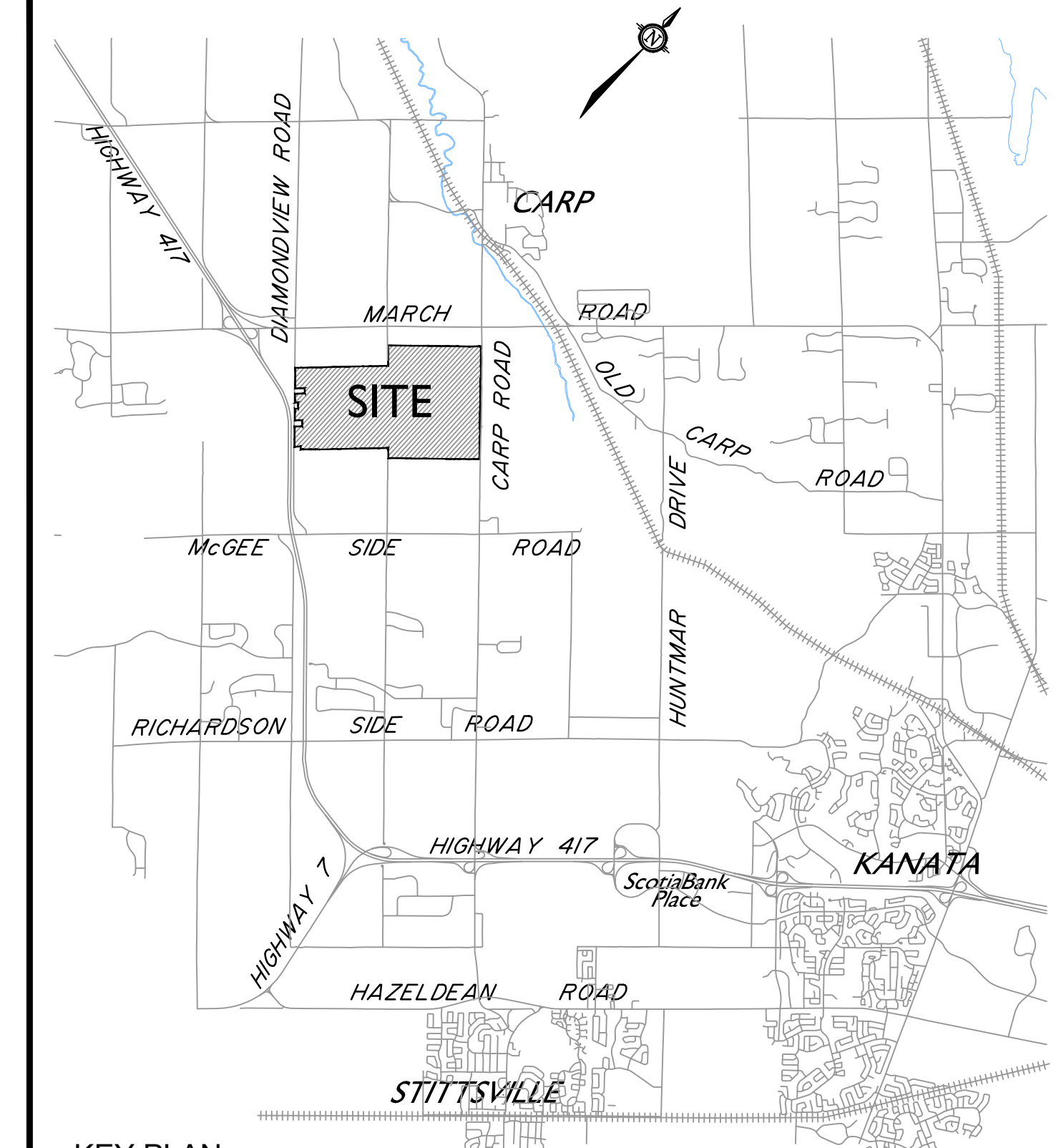
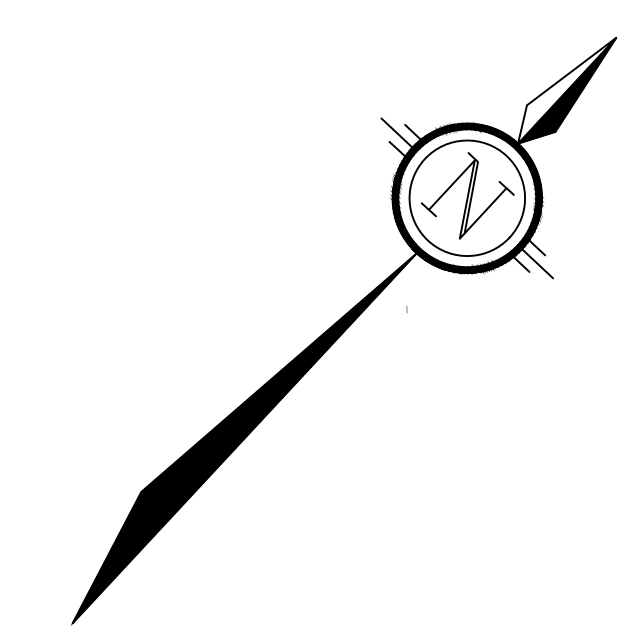
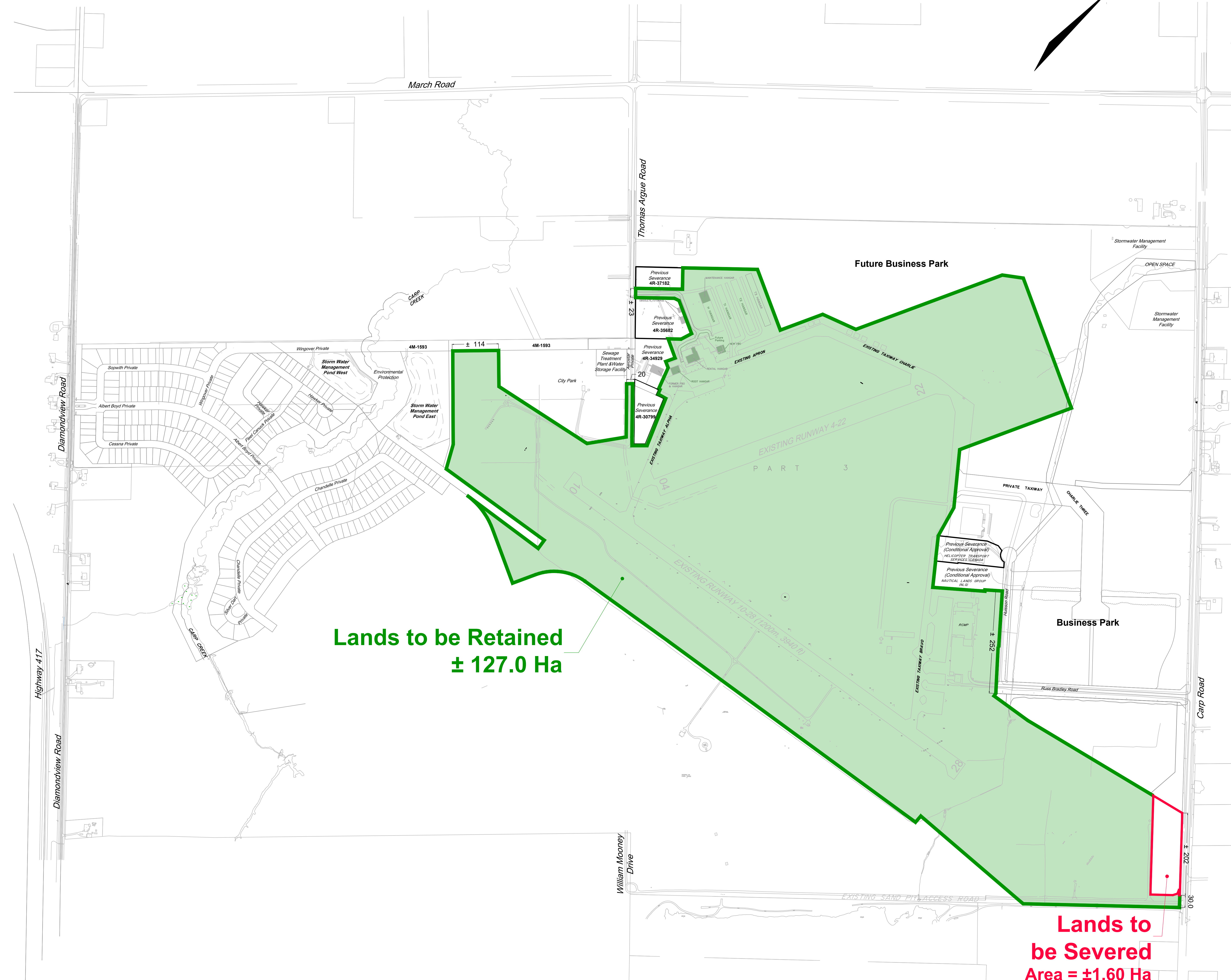


LEGEND

- Lands to be Retained
- Lands to be Severed



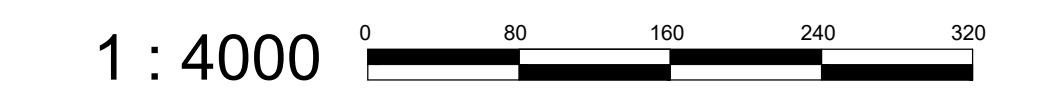
KEY PLAN
NOT TO SCALE

WEST CAPITAL AIRPARK

RETAINED LANDS CORE AIRPORT



SCALE



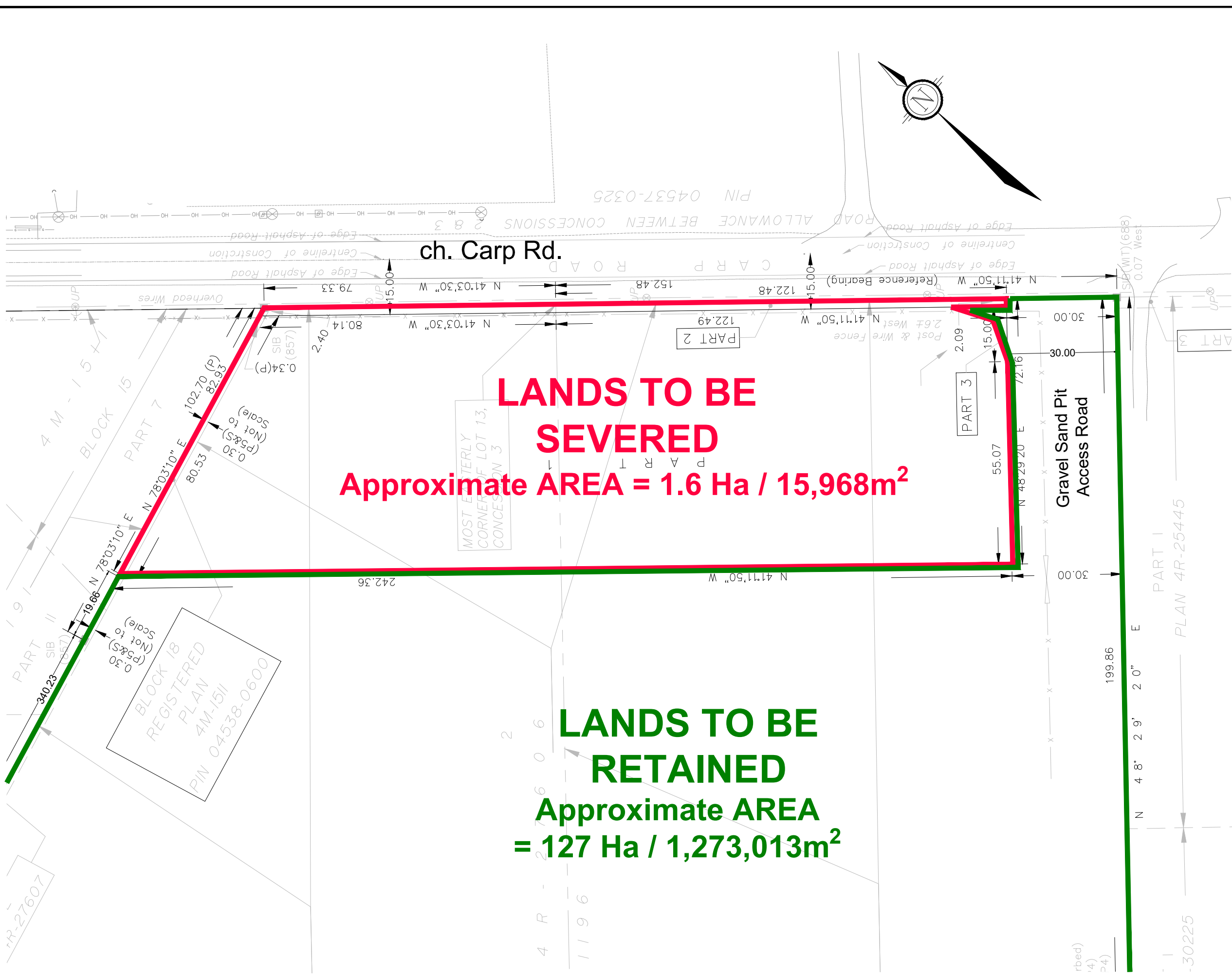
No.	REVISION	DATE	BY
5.	REVISED FOR CARP ROAD SEVERANCE	NOV 28/25	MV
4.	REVISED FOR ALPHA LANDS SEVERANCE	MAY 26/25	MV
3.	REVISED FOR NLG LANDS SEVERANCE	OCT 07/24	MV
2.	PREPARED FOR COMMITTEE OF ADJUSTMENT	MAY 31/24	MV
1.	PREPARED FOR COMMITTEE OF ADJUSTMENT	JAN 24/24	MV



DATE	NOVEMBER, 2025
PROJECT No.	102085
DRAWING No.	102085-CoreAirport

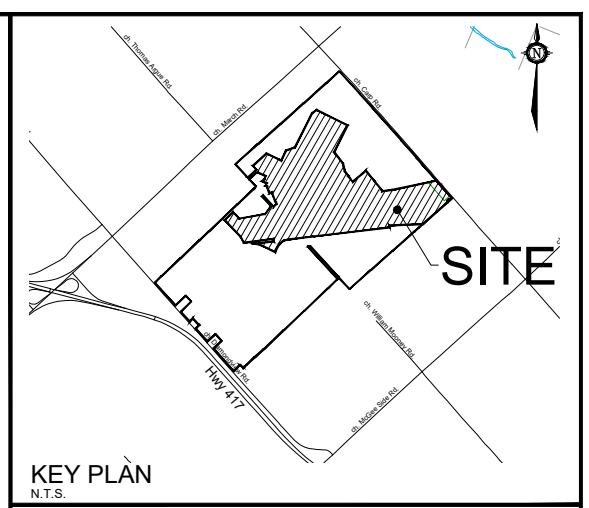
M:\2025\102085-CAD\Planning\Figures\102085-CoreAirport-SEV.dwg, CORE, Nov 28, 2025, 1:17pm, wseas

M:\2002\102085\CAD\Planning\Figures\102085-CARP-RD-SEV.dwg, CONSENT, Nov 28, 2025 - 1:14pm, wsls



LANDS TO BE SEVERED
 Approximate AREA = 1.6 Ha / 15,968m²

LANDS TO BE RETAINED
 Approximate AREA = 127 Ha / 1,273,013m²



CONSENT APPLICATION

1500 THOMAS ARGUE ROAD

PART OF LOT 12 & 13
 CONCESSION 3
 Geographic Township of Huntley
 CITY OF OTTAWA



No.	REVISION	DATE	BY
3.	REVISED SEVERANCE LIMITS	NOV 28/25	MV
2.	UPDATED LEGAL	NOV 18/25	MV
1.	ISSUED FOR PRE-CONSULTATION	SEPT 04/25	MV

NOVATECH
 Engineers, Planners & Landscape Architects
 Suite 200, 240 Michael Cowpland Drive
 Ottawa, Ontario, Canada K2M 1P6
 Telephone (613) 254-9643
 Facsimile (613) 254-5867
 Website www.novatech-eng.com

ISSUED
 NOVEMBER, 2025

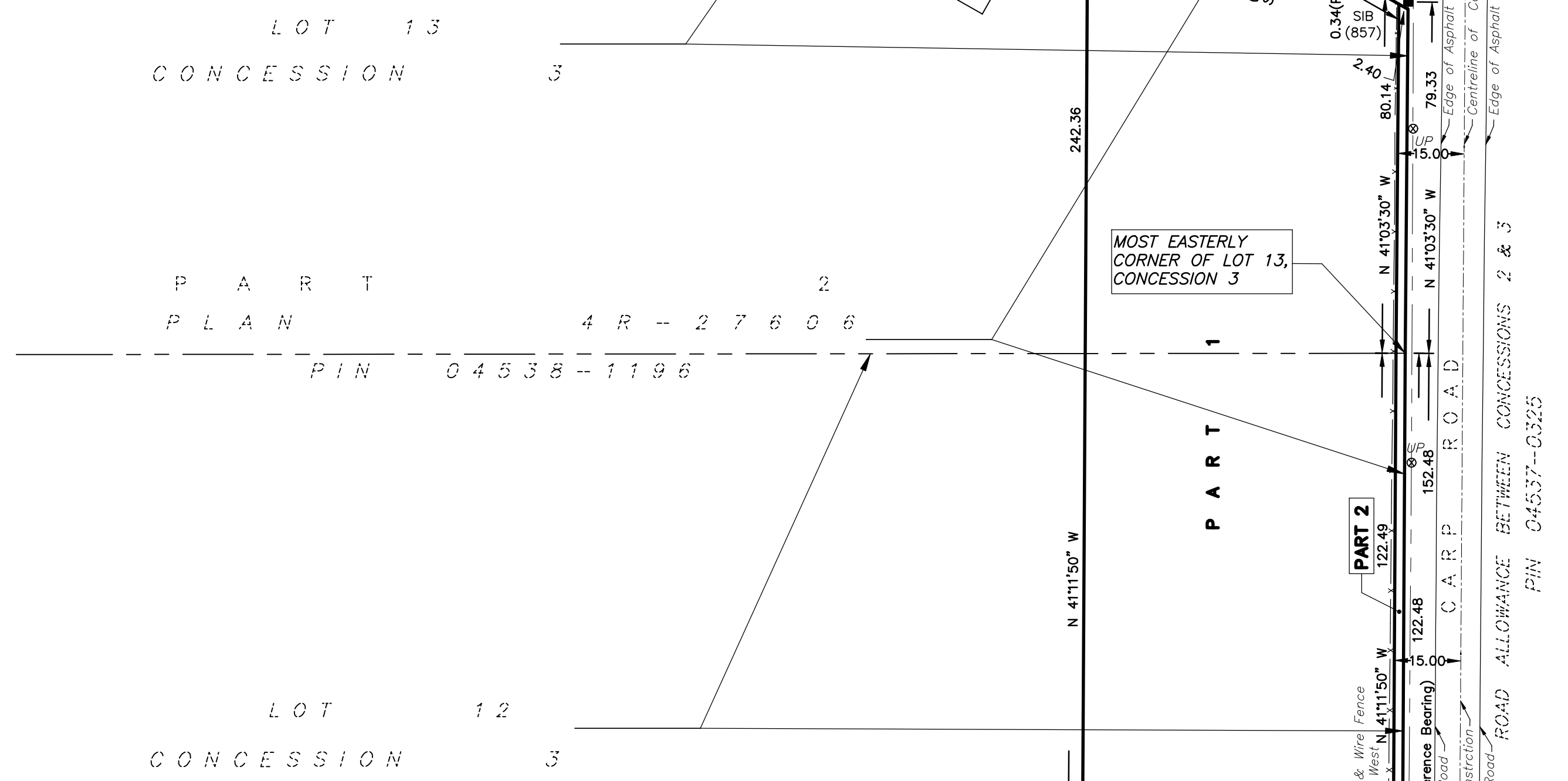
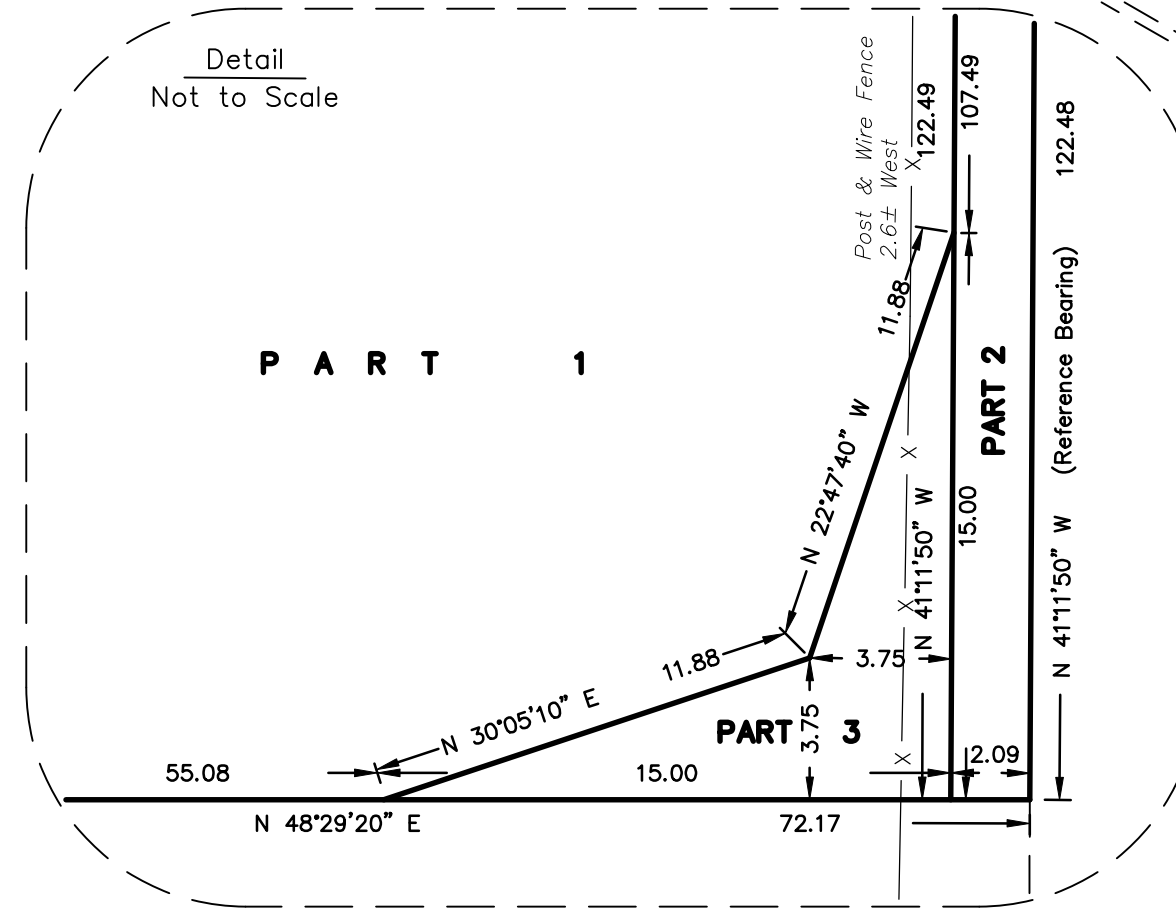
PROJECT No.
 102085

DRAWING No.
 102085-15-CARP-RD-SEV

METRIC
 DISTANCES AND COORDINATES SHOWN ON THIS PLAN ARE IN METRES
 AND CAN BE CONVERTED TO FEET BY DIVIDING BY 0.3048

SCHEDULE				
PART	LOT	CONCESSION	PIN	AREA (m ²)
1				15546
2	PART OF LOT 12 & 13	3	PART OF 04538-1196	422
3				56

PLAN PREPARED FOR COMMITTEE OF ADJUSTMENT PURPOSES
 NOVEMBER 26, 2025



**PLAN OF SURVEY OF
 PART OF LOTS 12 & 13
 CONCESSION 3
 GEOGRAPHIC TOWNSHIP OF HUNTLEY
 CITY OF OTTAWA**

SCALE 1 : 1000
 0 10 20 50 100 metres

THE INTENDED PLOT SIZE OF THIS PLAN IS 610mm IN WIDTH BY 457mm IN HEIGHT
 WHEN PLOTTED AT A SCALE OF 1:1000.
FAIRHALL, MOFFATT & WOODLAND LIMITED
 ONTARIO LAND SURVEYORS

- NOTES**
- BEARINGS ARE GRID, DERIVED FROM THE EASTERLY LIMIT OF PART 2, PLAN 4R-27606, HAVING A BEARING OF N 41°11'50" W AND ARE REFERRED TO THE CENTRAL MERIDIAN, 76°30'W LONGITUDE MTM ZONE 9, (NAD83 ORIGINAL).
 - DISTANCES ARE GROUND AND CAN BE CONVERTED TO GRID BY MULTIPLYING BY THE COMBINED SCALE FACTOR 0.999905.
 - ALTERNATE AND REDUCED LENGTH MONUMENTS SET DUE TO UNDERGROUND UTILITY HAZARD.

- LEGEND**
- - SURVEY MONUMENT SET (WT) - WITNESS
 - - SURVEY MONUMENT FOUND PIN - PROPERTY IDENTIFIER NUMBER
 - SIB - STANDARD IRON BAR ⊕UP - UTILITY POLE
 - SSIB - SHORT STANDARD IRON BAR ⊗ - GATE
 - (P) - PLAN 4R-27606 -X- - POST & WIRE FENCE
 - (P1) - PLAN 4R-27607
 - (P2) - PLAN 4R-33191
 - (P3) - PLAN 4R-30225
 - (P4) - PLAN 4R-34133
 - (P5) - REGISTERED PLAN 4M-1511
 - (S) - SET
 - (M) - MEASURED
 - (857) - FAIRHALL, MOFFATT & WOODLAND LIMITED, O.L.S.
 - (AOG) - ANNIS, O'SULLIVAN, VOLLEBEK LTD., O.L.S.
 - (688) - C. D. COPELAND, O.L.S.
 - (1692) - FARLEY, SMITH & DENIS SURVEYING LTD., O.L.S.

SURVEYOR'S CERTIFICATE

I CERTIFY THAT:

- THIS SURVEY AND PLAN ARE CORRECT AND IN ACCORDANCE WITH THE SURVEYS ACT, THE SURVEYORS ACT, THE LAND TITLES ACT AND THE REGULATIONS MADE UNDER THEM.
- THE SURVEY WAS COMPLETED ON

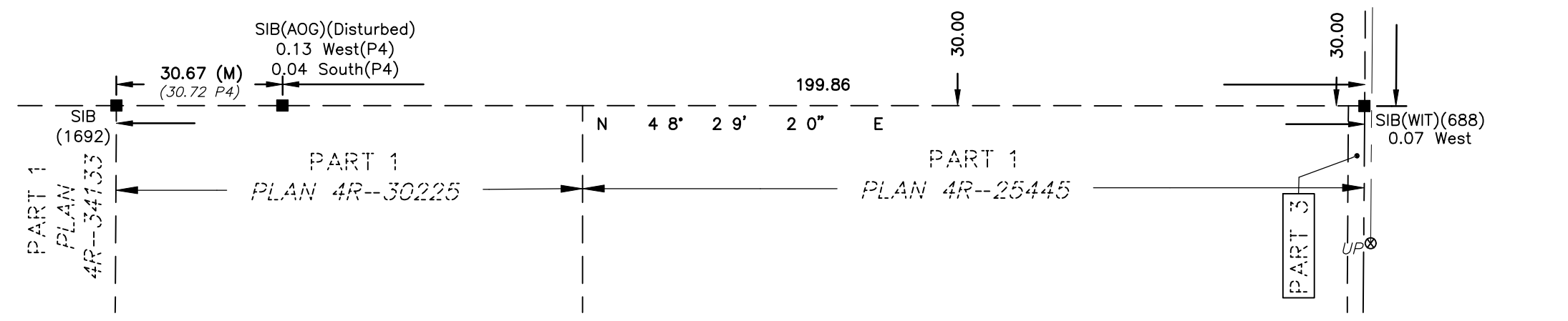
DATE _____ **JOHN H. GUTRI**
 ONTARIO LAND SURVEYOR

THIS PLAN OF SURVEY RELATES TO AOLS PLAN SUBMISSION FORM NUMBER

COORDINATES ARE MTM ZONE 9 NAD83 ORIGINAL DERIVED FROM THOSE SHOWN PLAN 4R-27606 AND CONVERTED FROM NAD 27 TO NAD 83 USING THE NATIONAL TRANSFORMATION PROGRAM, VERSION 2.0
 COORDINATES HAVE BEEN DETERMINED TO AN URBAN ACCURACY IN ACCORDANCE WITH SECTION 14(2) OF O.REG 216/10.

POINT ID	NORTHING	EASTING
*	*	*
*	*	*
*	*	*
*	*	*

COORDINATES CANNOT IN THEMSELVES BE USED TO RE-ESTABLISH CORNERS OR BOUNDARIES SHOWN ON THIS PLAN.



Fairhall Moffatt & Woodland LIMITED ONTARIO LAND SURVEYORS <i>Surveying and Land Information Services</i> 100-600 TERRY FOX DRIVE, KANATA, ONTARIO K2L 4B6 TEL: (613) 591-2580 FAX: (613) 591-1495 www.fmw.on.ca		JOB No. A F 1 8 2 0 0
		REFERENCE No. 144(a) - 3 Huntley S:\J085\af18200.dwg rp_of182.dwg (rr)