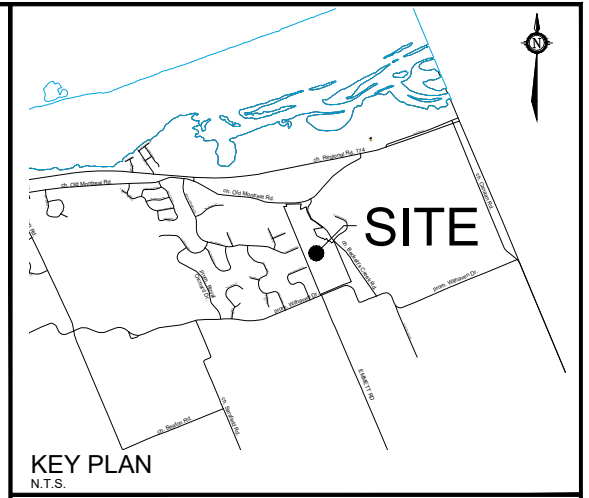
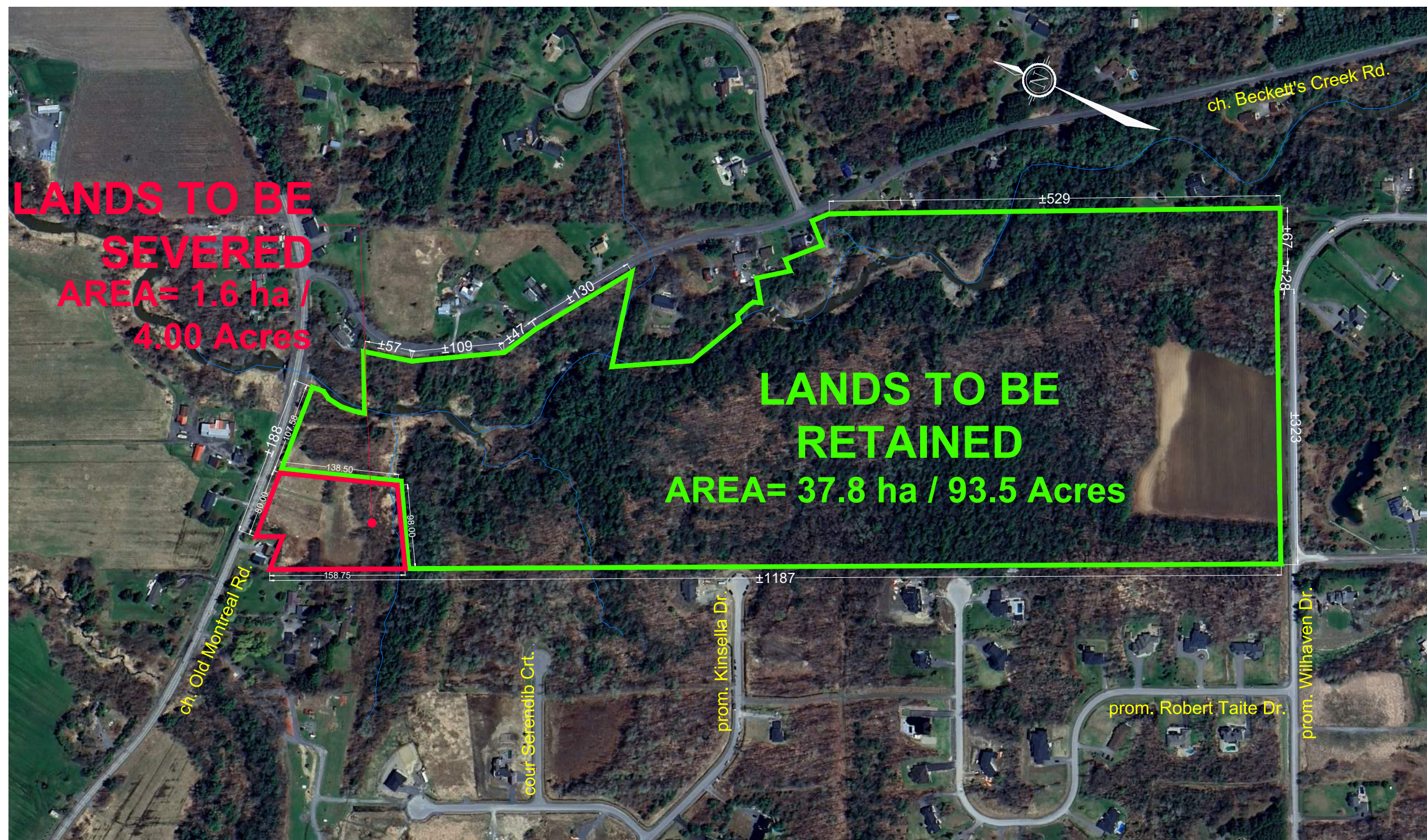


M:\2025\125078\CAD\Planning\Figures\125078-SEV.dwg, SEV1, Sep 05, 2025 - 4:27pm, wslloss

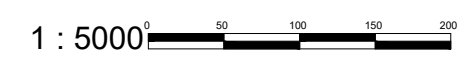


SEVERANCE PLAN #1

1622 BECKETT'S CREEK ROAD

PART LOT 6,
CONCESSION 1;
CITY OF OTTAWA

Committee of Adjustment
Received | Reçu le
2025-10-03
City of Ottawa | Ville d'Ottawa
Comité de dérogation

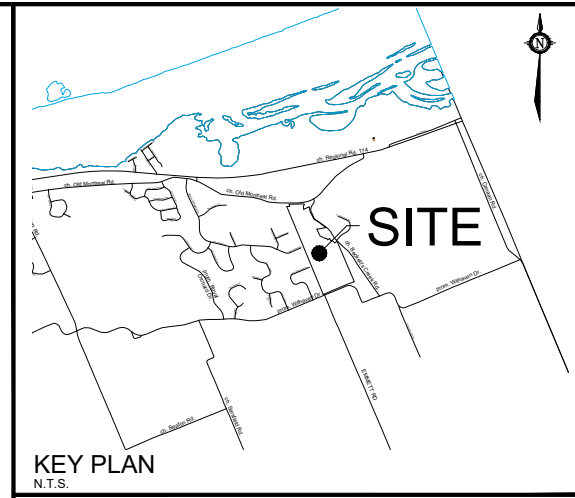
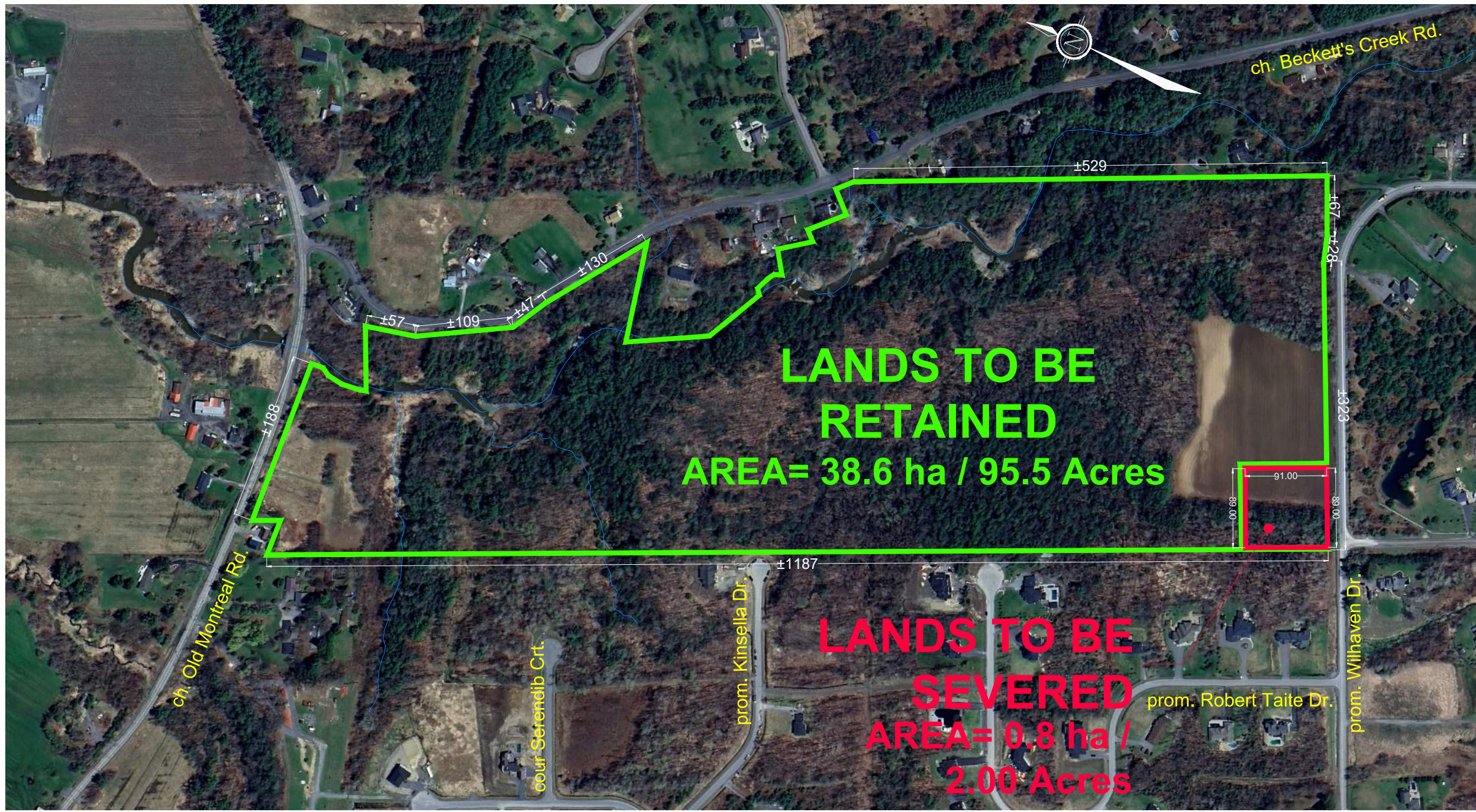


No.	REVISION	DATE	BY
1.	PREPARED FOR CONSENT APPLICATION	SEPT 05/25	RP

NOVATECH
Engineers, Planners & Landscape Architects
Suite 200, 240 Michael Cowpland Drive
Ottawa, Ontario, Canada K2M 1P6
Telephone (613) 254-9643
Facsimile (613) 254-5867
Website www.novatech-eng.com

ISSUED
SEPTEMBER, 2025
PROJECT No.
125078
DRAWING No.
125078-SEV

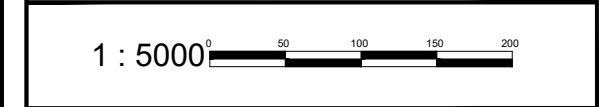
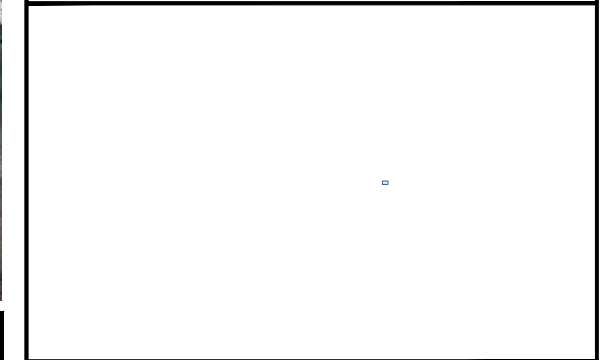
M:\2025\125078\CAD\Planning\Figures\125078-SEV.dwg, SEV2, Sep 05, 2025 - 4:27pm, wslloss



SEVERANCE PLAN #2

1622 BECKETT'S CREEK ROAD

PART LOT 6,
CONCESSION 1;
CITY OF OTTAWA

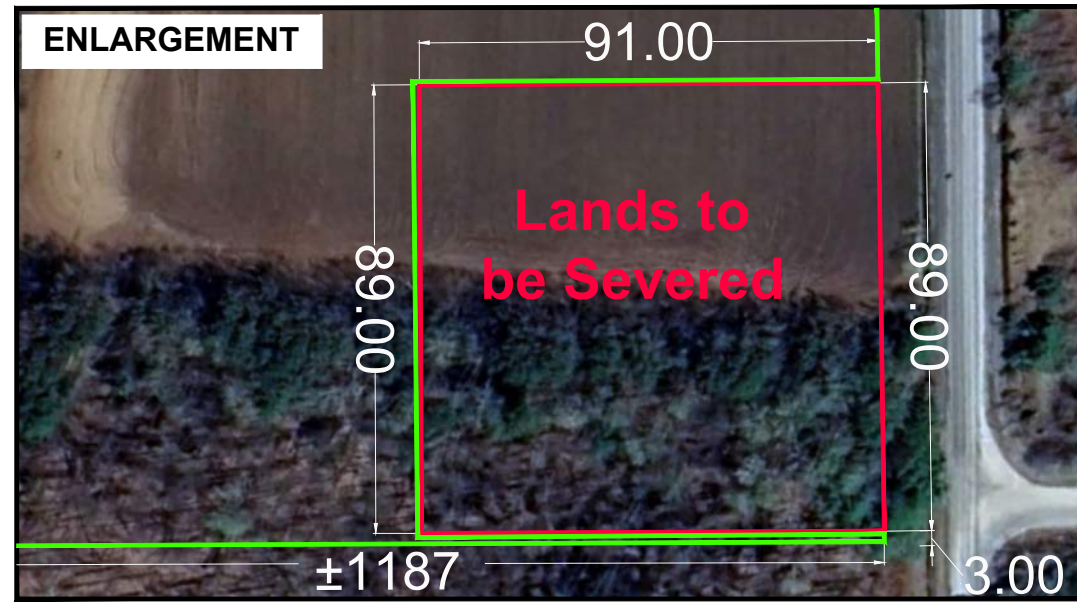


1.	PREPARED FOR CONSENT APPLICATION	SEPT 05/25	RP
No.	REVISION	DATE	BY

Committee of Adjustment
Received | Reçu le

2025-10-03

City of Ottawa | Ville d'Ottawa
Comité de dérogation



NOVATECH
Engineers, Planners & Landscape Architects
Suite 200, 240 Michael Cowpland Drive
Ottawa, Ontario, Canada K2M 1P6
Telephone (613) 254-9643
Facsimile (613) 254-5867
Website www.novatech-eng.com

ISSUED
SEPTEMBER, 2025

PROJECT No.
125078

DRAWING No.
125078-SEV