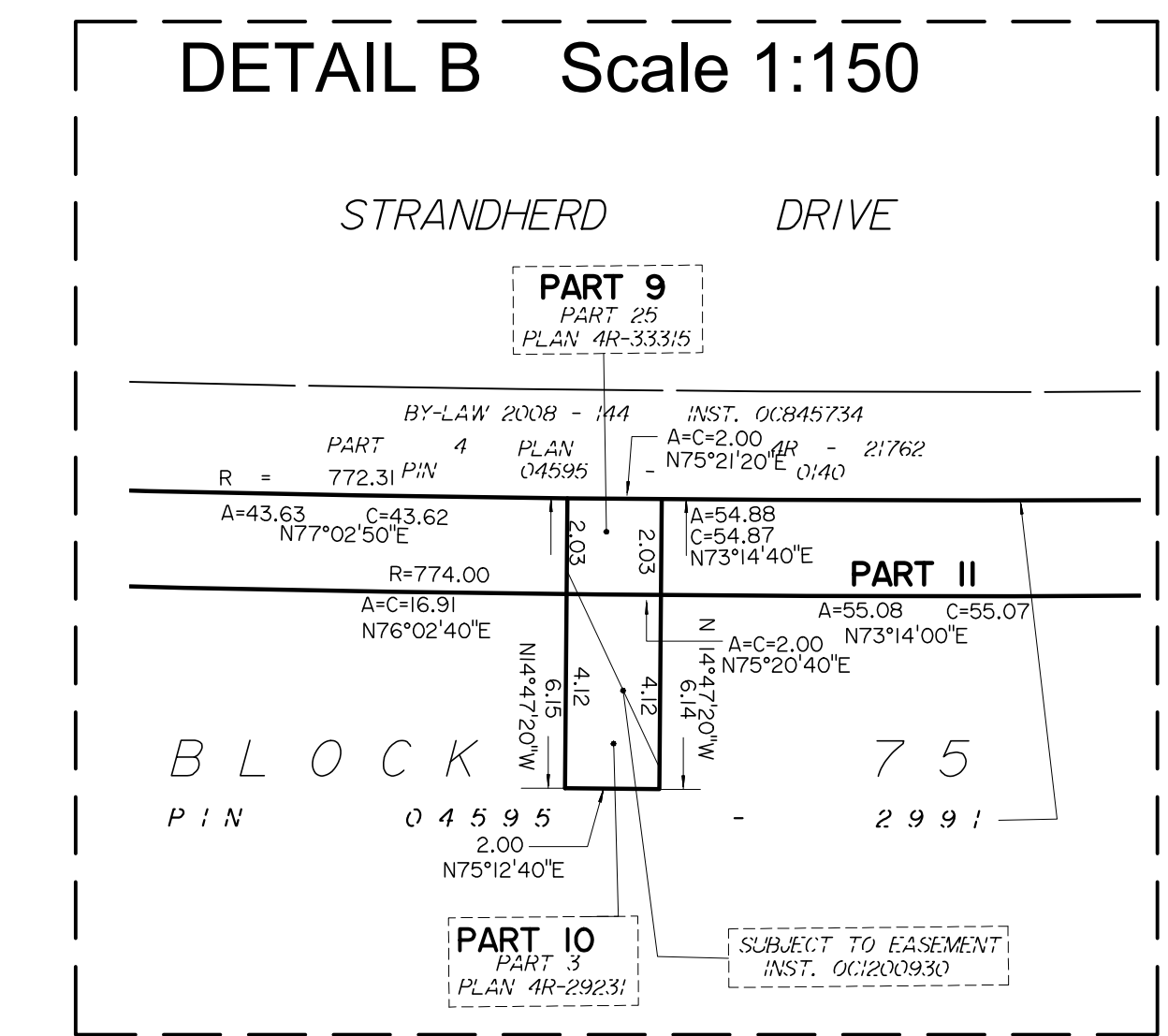
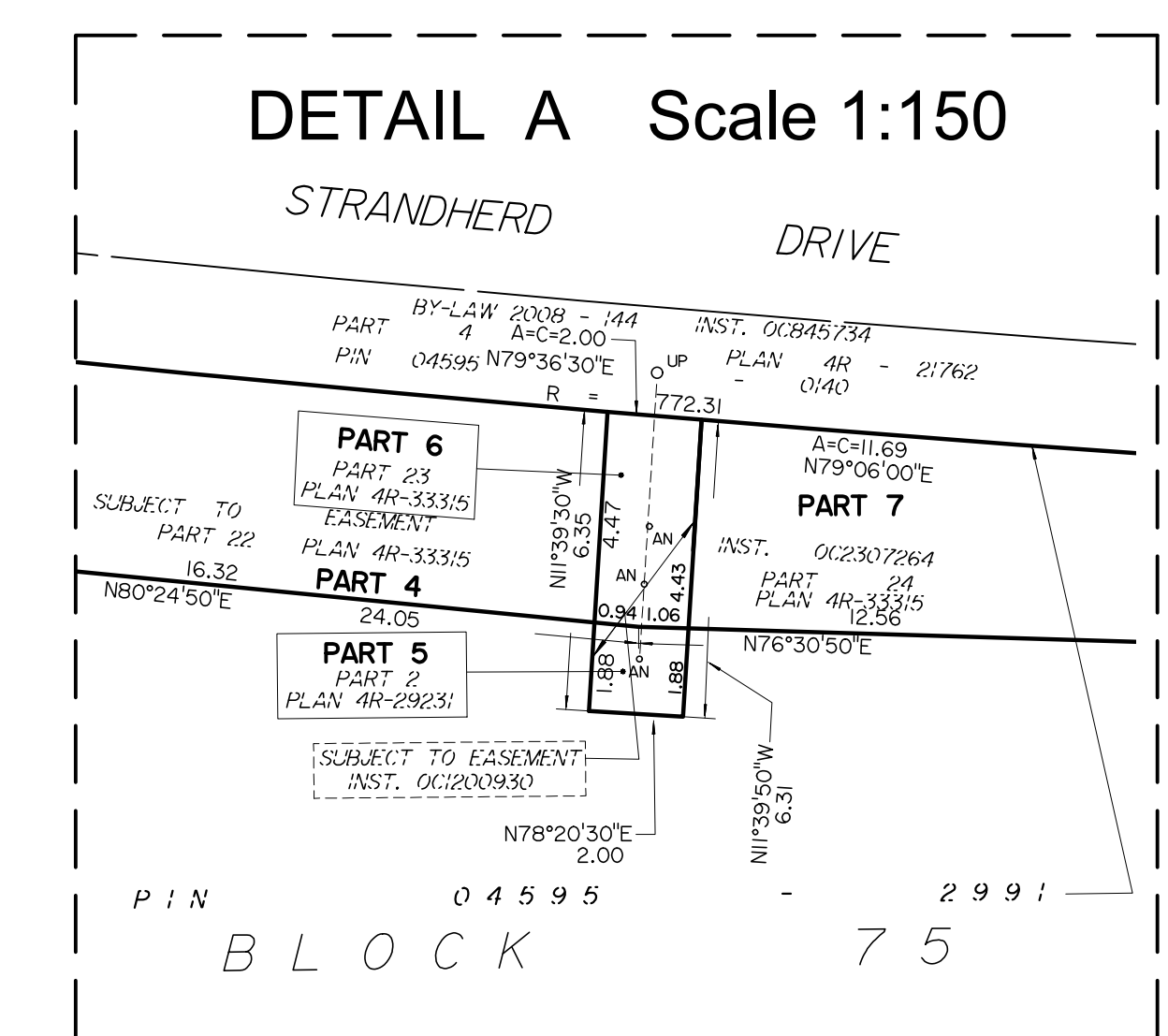


| PHASE AREA (hectares) | SCHEDULE | | |
|-----------------------|----------|-----------|---------|
| | PART | BLOCK | PLAN |
| Phase 1 1.4108 | 1 | | |
| | 2 | | |
| | 3 | | |
| | 4 | | |
| | 5 | | |
| | 6 | | |
| | 7 | | |
| Phase 2 1.0976 | 8 | ALL OF 75 | 4M-1650 |
| | 9 | | |
| | 10 | | |
| | 11 | | |
| | 12 | | |
| | 13 | | |
| | 14 | | |
| | 15 | | |
| | 16 | | |
| | 17 | | |
| | 18 | | |

Parts 2, 3: Subject to easement trust, OC2007265
 Part 3: Subject to easement trust, OC2491558
 Parts 5, 6, 9, 10, 12, 13, 15, 16: Subject to easement trust, OC1200950
 Parts 4, 6, 7, 8, 11, 12, 14, 15, 17: Subject to easement trust, OC2001964



- Notes & Legend**
- Denotes Survey Monument Planted
 - Survey Monument Found
 - SB— Standard Iron Bar
 - SIB— Short Standard Iron Bar
 - IB— Iron Bar
 - CC— Cast Cross
 - CP— Concrete Pin
 - IB#— Round Iron Bar
 - SB#— Spike & Washer
 - SIB#— Short Standard Iron Bar
 - IB*— Iron Bar
 - (WIT)— Witness
 - (M)— Measured
 - (AG)— Annis, O'Sullivan, Vollebek Ltd.
 - (PI)— Plan
 - (P)— Plan
 - (PS)— Pin
 - M-H— Maintenance Hole (Storm Sewer)
 - M-S— Maintenance Hole (Sanitary)
 - U— Utility Pole
 - Anchor



Committee of Adjustment
 Received | Reçu le
2026-01-28
 City of Ottawa | Ville d'Ottawa
 Comité de dérogation

PLAN OF SURVEY OF BLOCK 75 REGISTERED PLAN 4M-1650 CITY OF OTTAWA
 Surveyed by Annis, O'Sullivan, Vollebek Ltd.
 Scale 1 : 300
 The intended plot size of the plan is 1219 mm in width by 914 mm in height when plotted at a scale of 1:300.

Surveyor's Certificate
 1. This survey and plan are correct and in accordance with the Surveyors Act and the Land Titles Act and the regulations made under them.
 2. The survey was completed on the ___ day of _____, 2026.

Date: _____
 Michael L. Fairdeau
 Ontario Land Surveyor

Distances shown on this plan are ground distances and can be converted to grid distances by multiplying by the combined scale factor of 0.999927.
 Bearings are grid, derived from Can-Net 2016 Real Time Network GPS observations on reference points A and B, shown herein, having a bearing of Nxx°xx'W and are referenced to Specified Control Points 01919791338 and 01919871649, MTM Zone 9 (76°30' West Longitude) NAD-83 (original).
 For bearing comparisons, a rotation of 0°00'00" counter-clockwise was applied to bearings on plan.
 Coordinates are derived from Can-Net 2016 Real Time Network GPS observations referenced to Specified Control Points 01919791338 and 01919871649, MTM Zone 9 (76°30' West Longitude) NAD-83 (original).
 Coordinate values are to urban accuracy in accordance with O. Reg. 216/10.
 • 01919791338 Northing 5006055.96 Easting 346140.91
 • 01919871649 Northing 5007186.87 Easting 372435.05
 • Point A Northing Easting
 • Point B Northing Easting
 Caution: Coordinates cannot, in themselves, be used to re-establish corners or boundaries shown on this plan.

