

Committee of Adjustment
 Received | Reçu le
2026-01-14
 City of Ottawa | Ville d'Ottawa
Comité de dérogation

MATERIALS & INSTALLATION
 TO BE USED IN THE CONSTRUCTION OF THE WORK SHALL BE AS SPECIFIED IN THE DRAWINGS AND SHALL BE OF THE QUALITY AND QUANTITY REQUIRED BY THE DRAWINGS. THE CONTRACTOR SHALL BE RESPONSIBLE FOR OBTAINING ALL NECESSARY PERMITS AND APPROVALS FROM THE APPLICABLE AUTHORITIES. THE CONTRACTOR SHALL BE RESPONSIBLE FOR OBTAINING ALL NECESSARY PERMITS AND APPROVALS FROM THE APPLICABLE AUTHORITIES.

NO.	REVISION	DATE
1	ISSUED FOR PERMITTING	15 JUN 2024
2	ISSUED FOR PERMITTING	15 JUN 2024
3	ISSUED FOR PERMITTING	15 JUN 2024
4	ISSUED FOR PERMITTING	15 JUN 2024
5	ISSUED FOR PERMITTING	15 JUN 2024
6	ISSUED FOR PERMITTING	15 JUN 2024
7	ISSUED FOR PERMITTING	15 JUN 2024
8	ISSUED FOR PERMITTING	15 JUN 2024
9	ISSUED FOR PERMITTING	15 JUN 2024
10	ISSUED FOR PERMITTING	15 JUN 2024

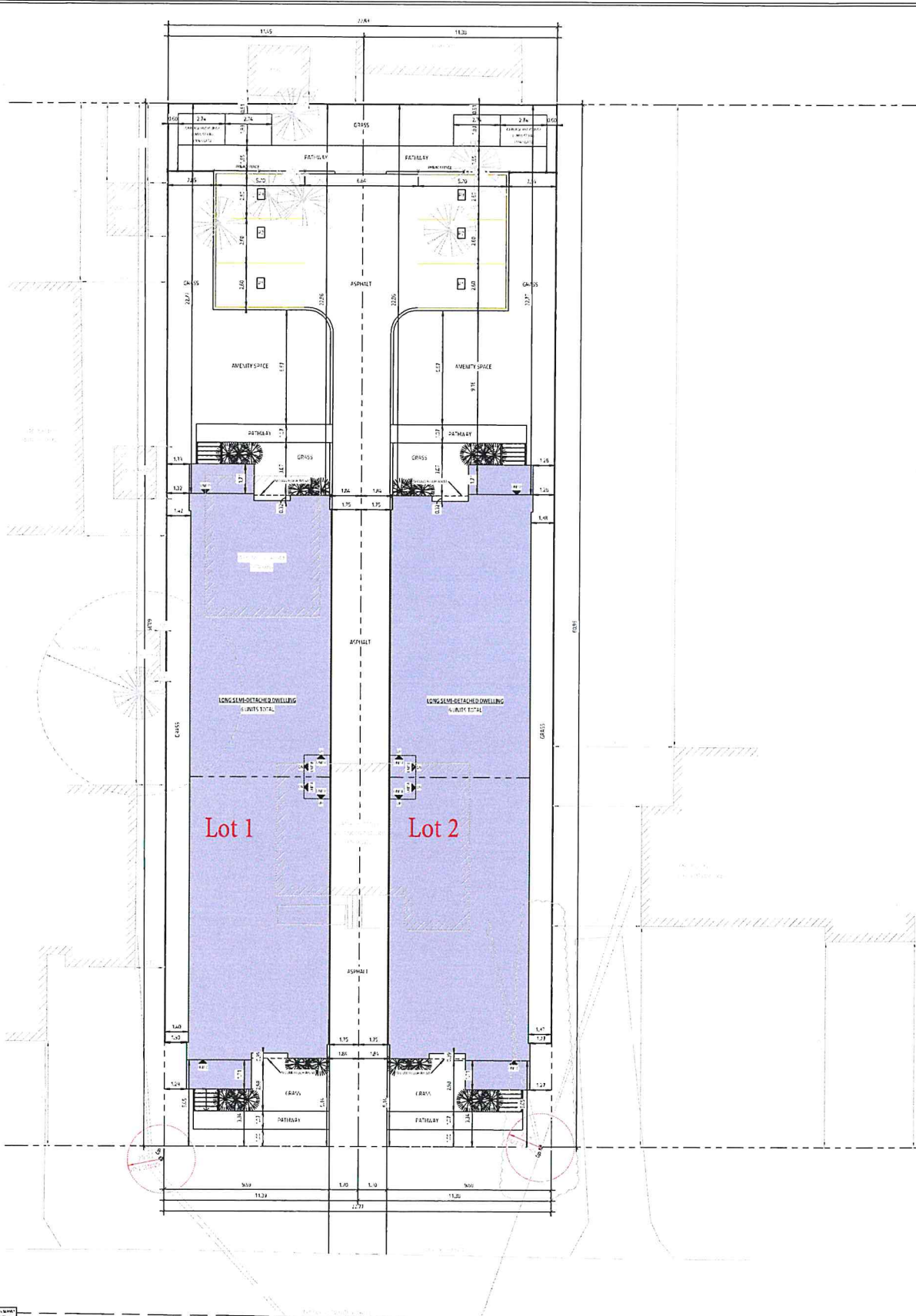
PROJECT	6719 BARSONA PLC.
CLIENT	LANG SEMI-DETACHED DWELLINGS
DATE	15 JUN 2024
DRAWN BY	Q11A10A.GH
CHECKED BY	GH

6719 BARSONA PLC.
 LANG SEMI-DETACHED DWELLINGS
 15 JUN 2024



ELEVATIONS	
NO.	DATE
1	15 JUN 2024
2	15 JUN 2024
3	15 JUN 2024
4	15 JUN 2024
5	15 JUN 2024
6	15 JUN 2024
7	15 JUN 2024
8	15 JUN 2024
9	15 JUN 2024
10	15 JUN 2024

A4.0



BARSONA PLC.

THE CLIENT, THE ARCHITECT AND THE ENGINEER SHALL BE RESPONSIBLE FOR THE ACCURACY OF THE INFORMATION PROVIDED IN THIS DOCUMENT.

THE CLIENT, THE ARCHITECT AND THE ENGINEER SHALL BE RESPONSIBLE FOR THE ACCURACY OF THE INFORMATION PROVIDED IN THIS DOCUMENT.

THE CLIENT, THE ARCHITECT AND THE ENGINEER SHALL BE RESPONSIBLE FOR THE ACCURACY OF THE INFORMATION PROVIDED IN THIS DOCUMENT.

THE CLIENT, THE ARCHITECT AND THE ENGINEER SHALL BE RESPONSIBLE FOR THE ACCURACY OF THE INFORMATION PROVIDED IN THIS DOCUMENT.

THE CLIENT, THE ARCHITECT AND THE ENGINEER SHALL BE RESPONSIBLE FOR THE ACCURACY OF THE INFORMATION PROVIDED IN THIS DOCUMENT.

THE CLIENT, THE ARCHITECT AND THE ENGINEER SHALL BE RESPONSIBLE FOR THE ACCURACY OF THE INFORMATION PROVIDED IN THIS DOCUMENT.

THE CLIENT, THE ARCHITECT AND THE ENGINEER SHALL BE RESPONSIBLE FOR THE ACCURACY OF THE INFORMATION PROVIDED IN THIS DOCUMENT.

THE CLIENT, THE ARCHITECT AND THE ENGINEER SHALL BE RESPONSIBLE FOR THE ACCURACY OF THE INFORMATION PROVIDED IN THIS DOCUMENT.

THE CLIENT, THE ARCHITECT AND THE ENGINEER SHALL BE RESPONSIBLE FOR THE ACCURACY OF THE INFORMATION PROVIDED IN THIS DOCUMENT.

THE CLIENT, THE ARCHITECT AND THE ENGINEER SHALL BE RESPONSIBLE FOR THE ACCURACY OF THE INFORMATION PROVIDED IN THIS DOCUMENT.

THE CLIENT, THE ARCHITECT AND THE ENGINEER SHALL BE RESPONSIBLE FOR THE ACCURACY OF THE INFORMATION PROVIDED IN THIS DOCUMENT.



PROJECT NO.	6719 BARSONA PLC.
PROJECT NAME	LONG SEMI-DETACHED DWELLING (2 UNITS TOTAL)
DATE	12/12/2023
SCALE	1:100
DRAWN BY	[Name]
CHECKED BY	[Name]
DATE	12/12/2023



SITE PLAN	
DATE	12/12/2023
SCALE	1:100
PROJECT NO.	6719 BARSONA PLC.
PROJECT NAME	LONG SEMI-DETACHED DWELLING (2 UNITS TOTAL)
DATE	12/12/2023
SCALE	1:100

A0.1

**LOT 2,
REGISTERED PLAN 617
CITY OF OTTAWA**

Surveyed by Annis, O'Sullivan, Vollebek Ltd.
Scale 1 : 150



Metric
DISTANCES AND COORDINATES SHOWN ON THIS PLAN
ARE IN METRES AND CAN BE CONVERTED TO FEET BY
DIVIDING BY 0.3048.

PART 2
THIS PLAN MUST BE READ IN CONJUNCTION WITH
SURVEY REPORT DATED: October 24, 2025

Surveyor's Certificate

- I CERTIFY THAT:
- This survey and plan are correct and in accordance with the Surveys Act, the Surveyors Act and the regulations made under them.
 - The survey was completed on the 25th day of October, 2025.

October 25, 2025
Date

Andrew Handspiker
Andrew Handspiker
Ontario Land Surveyor

Notes & Legend

- Denotes Survey Monument Planted
- Survey Monument Found
- SIB Standard Iron Bar
- SSIB Short Standard Iron Bar
- IB Iron Bar
- IBØ Round Iron Bar
- CC Cut Cross
- (WIT) Witness
- (AOG) Annis, O'Sullivan, Vollebek Ltd.
- Meas. Measured
- Prop. Proportioned
- (P1) Registered Plan 617
- (P2) Plan 5R-8037
- (P3) Plan 5R-8448
- (P4) Plan 5R-13569
- (P5) (647) Plan Dated September 24, 2024
- AC Air Conditioner
- Acc. Accepted
- BF Board Fence
- CB Catch Basin
- C/L Centreline
- CSP Corrugated Steel Pipe
- Ø Diameter
- Gas Meter
- Hydro Meter
- Inv. Invert
- M-H Maintenance Hole (Sanitary)
- RWS Stone Retaining Wall
- RWB Brick Retaining Wall
- T/G Top of Grate
- T/P Top of Pipe
- UP Utility Pole
- WW Window Well
- + 65.00' Top of Brick Retaining Wall Elevation
- Deciduous Tree
- X Fence
- OHW Overhead Wires
- Property Line

Bearings are grid, derived from Can-Net 2016 Real Time Network
GPS observations, MTM Zone 9 (76°30' West Longitude) NAD-83
(original).

For bearing comparisons, a rotation of 0°36'10" counter-clockwise
was applied to bearings on plans (P1), (P2), (P3) & (P4).

ASSOCIATION OF ONTARIO
LAND SURVEYORS
PLAN SUBMISSION FORM
V-117288

THIS PLAN IS NOT VALID UNLESS
IT IS AN EMBOSSED ORIGINAL
COPY ISSUED BY THE SURVEYOR
In accordance with
Regulation 1026, Section 29 (3).

ELEVATION NOTES

- Elevations shown are geodetic and are referred to the CGVD2878 geodetic datum, derived from benchmark No. 19690233 having an elevation of 68.894 metres.
- It is the responsibility of the user of this information to verify that the job benchmark has not been altered or disturbed and that its relative elevation and description agrees with the information shown on this drawing.

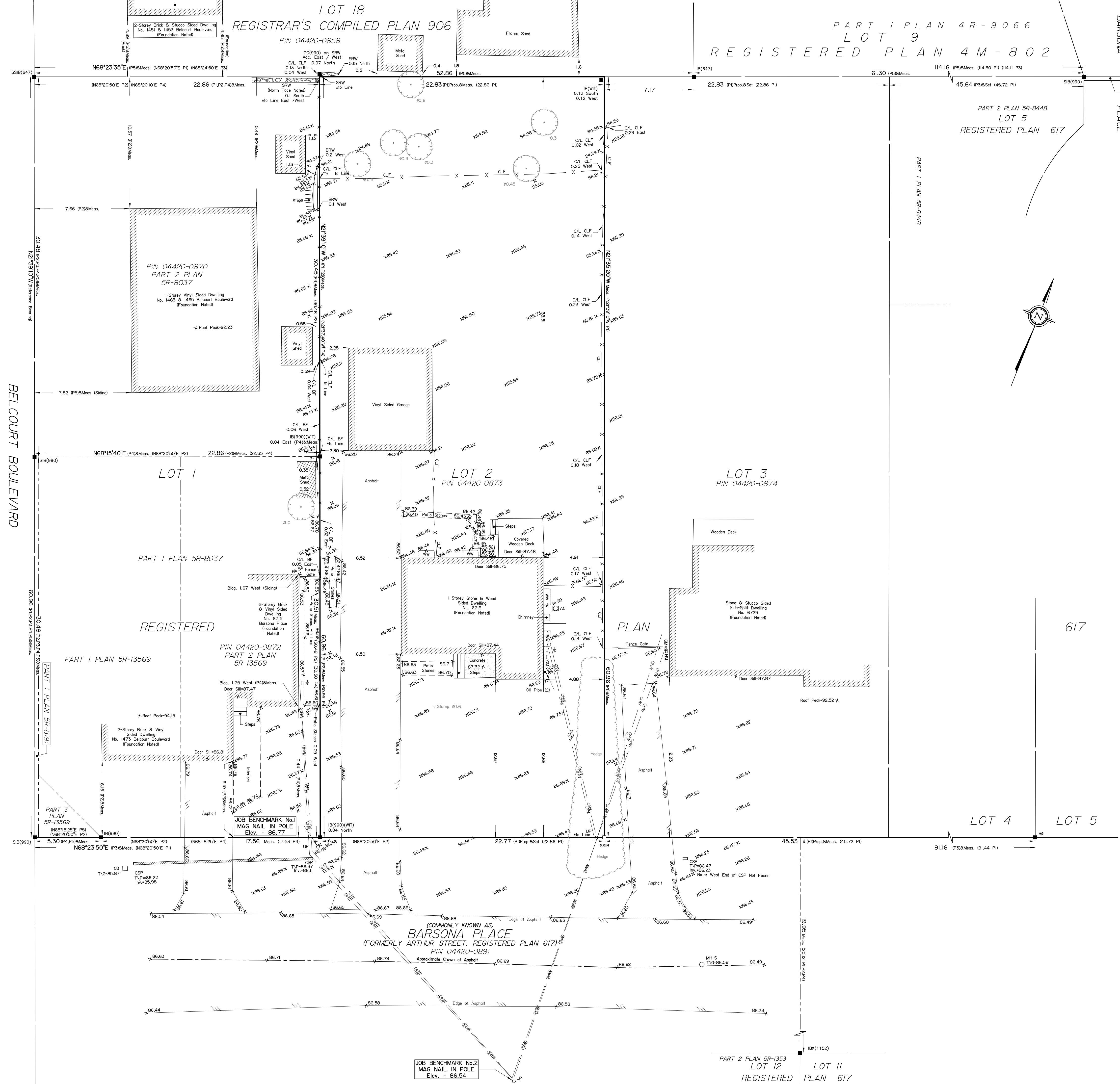
UTILITY NOTES

- This drawing cannot be accepted as acknowledging all of the utilities and it will be the responsibility of the user to contact the respective utility authorities for confirmation.
- Only visible surface utilities were located.
- A field location of underground plant by the pertinent utility authority is mandatory before any work involving breaking ground, probing, excavating etc.

© Annis, O'Sullivan, Vollebek Ltd. 2025. THIS PLAN IS PROTECTED BY COPYRIGHT

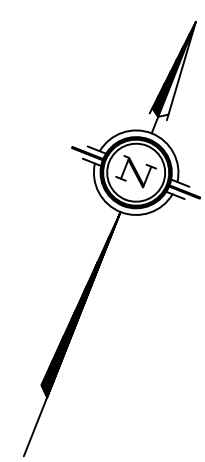
ANNIS, O'SULLIVAN, VOLLEBEK LTD.
14 Concourse Gate, Suite 500
Nepean, Ont. K2E 7S6
Phone: (613) 727-0850 / Fax: (613) 727-1079
Email: Nespean@asvlltd.com

Ontario
Land Surveyors Job No. 26310-25 Proj Construction L1 2 PL 617 T F



BELCOURT BOULEVARD

BARSONA PLACE



PLAN

617

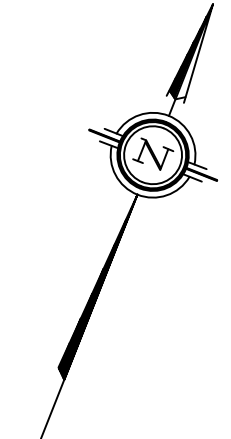
(COMMONLY KNOWN AS)
BARSONA PLACE
(FORMERLY ARTHUR STREET, REGISTERED PLAN 617)
P.I.N. 04420-0891
Approximate Crown of Asphalt

PART 2 PLAN 5R-1353
LOT 12
REGISTERED

LOT 11
PLAN 617

LOT 18
REGISTRAR'S COMPILED PLAN 906
P.I.N. 04420-0858

PART 1 PLAN 4R-9066
LOT 9
REGISTERED PLAN 4M-802



SCHEDULE				
AREA (Sq.m.)	PART	LOT	PLAN	PIN
592.5	1			
103.6	2			
103.6	3	LOT 2	REGISTERED PLAN 617	PIN 04420-0873
590.2	4			

PLAN OF SURVEY OF
LOT 2
REGISTERED PLAN 617
CITY OF OTTAWA
Surveyed by Annis, O'Sullivan, Vollebakk Ltd.

Scale 1:150
6 4.5 3.0 1.5 0 3 6 Metres
The intended plot size of the plan is 762 mm in width by 610 mm in height when plotted at a scale of 1:150.

Metric
DISTANCES AND COORDINATES SHOWN ON THIS PLAN ARE IN METRES AND CAN BE CONVERTED TO FEET BY DIVIDING BY 0.3048.

Surveyor's Certificate
I CERTIFY THAT:
1. This survey and plan are correct and in accordance with the Surveys Act, the Surveyors Act and the Land Titles Act and the regulations made under them.
2. The survey was completed on the ___ day of _____, 2025.

MMM DD YYYY Date T. Hartwick Ontario Land Surveyor
This plan of survey relates to AOLS Plan Submission Form Number V-117306

- Notes & Legend
- Denotes Survey Monument Planted
 - Denotes Survey Monument Found
 - SIB Standard Iron Bar
 - SSIB Short Standard Iron Bar
 - IB Iron Bar
 - IBØ Round Iron Bar
 - CC Cut Cross
 - (WIT) Witness
 - (AOG) Annis, O'Sullivan, Vollebakk Ltd.
 - Meas. Measured
 - (P1) Registered Plan 617
 - (P2) Plan 5R-8037
 - (P3) Plan 5R-8448
 - (P4) Plan 5R-13569
 - (P5) (647) Plan Dated September 24, 2024
 - (P6) (AOG) Plan Dated October 24, 2025
 - BF Board Fence
 - CLF Chain Link Fence
 - Ø Diameter
 - RWS Stone Retaining Wall
 - RWB Brick Retaining Wall
 - UP Utility Pole
 - Deciduous Tree
 - X Fence
 - OHW Overhead Wires
 - Property Line

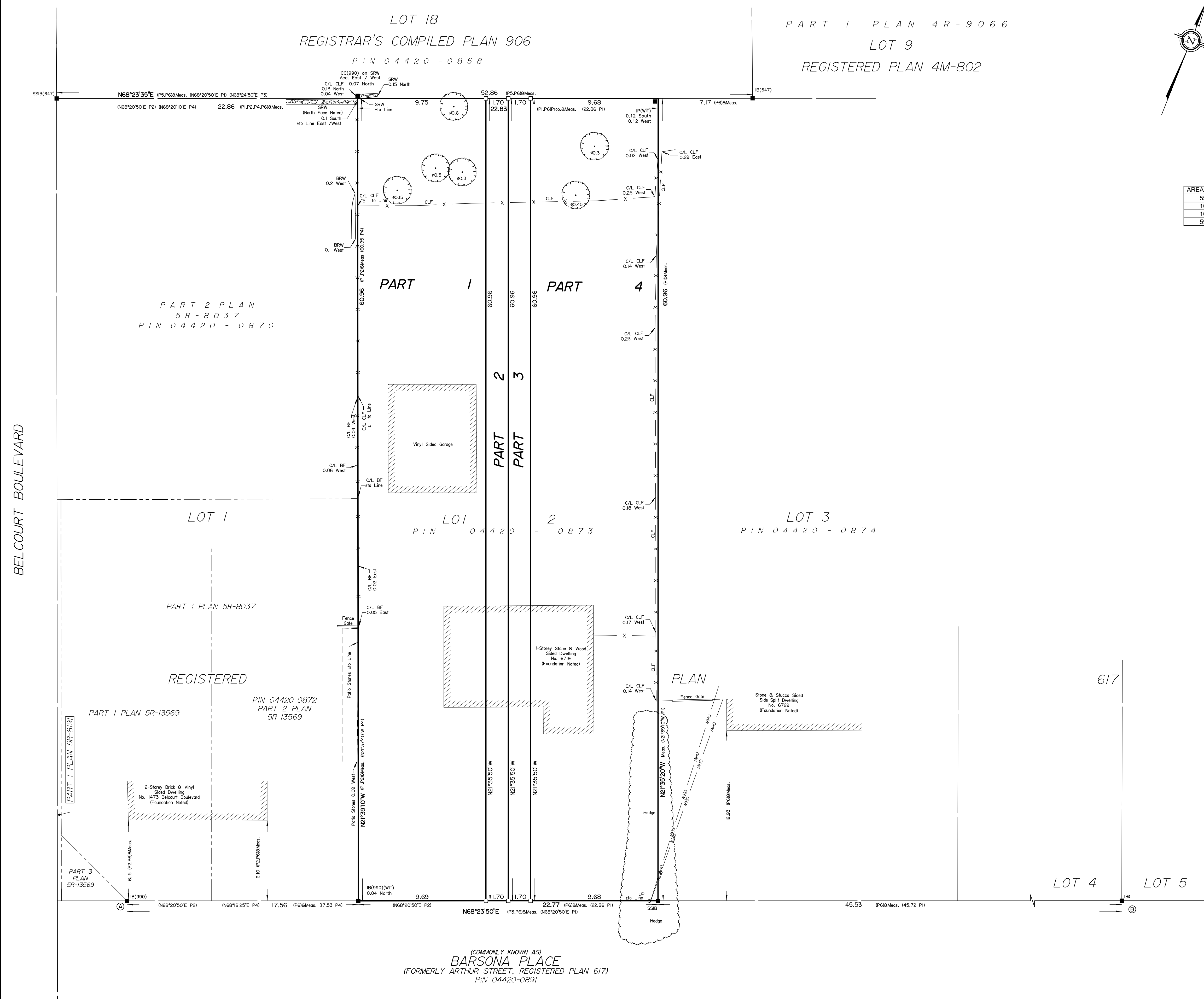
Distances shown on this plan are ground distances and can be converted to grid distances by multiplying by the combined scale factor of 0.999987.
Bearings are grid, derived from Can-Net 2016 Real Time Network GPS observations on reference points A and B, shown hereon, having a bearing of N68°23'50"E and are referenced to Specified Control Points 01919791338 and 01919871649, MTM Zone 9 (76°30' West Longitude) NAD-83 (original).

For bearing comparisons, a rotation of 0°36'10" counter-clockwise was applied to bearings on plans (P1), (P2), (P3) & (P4).
Coordinates are derived from Can-Net 2016 Real Time Network GPS observations referenced to Specified Control Points 01919791338 and 01919871649, MTM Zone 9 (76°30' West Longitude) NAD-83 (original).

Coordinate values are to urban accuracy in accordance with O. Reg. 216/10.
.01919791338 Northing 5006055.96 Easting 346140.91
.01919871649 Northing 5007189.87 Easting 372435.05
.Point A Northing 5037012.37 Easting 381435.23
.Point B Northing 5037043.98 Easting 381515.05

Caution: Coordinates cannot, in themselves, be used to re-establish corners or boundaries shown on this plan.

ANNIS, O'SULLIVAN, VOLLEBEKK LTD.
14 Concourse Gate, Suite 500
Nepean, Ont. K2E 7S6
Phone: (613) 727-0850 / Fax: (613) 727-1079
Email: nepean@aosvld.com
Ontario Land Surveyors Job No. 26310-25 Proj. Construction Lt. 2, Pl. 617 R. 01



BELCOURT BOULEVARD

(COMMONLY KNOWN AS)
BARSONA PLACE
(FORMERLY ARTHUR STREET, REGISTERED PLAN 617)
P.I.N. 04420-0891

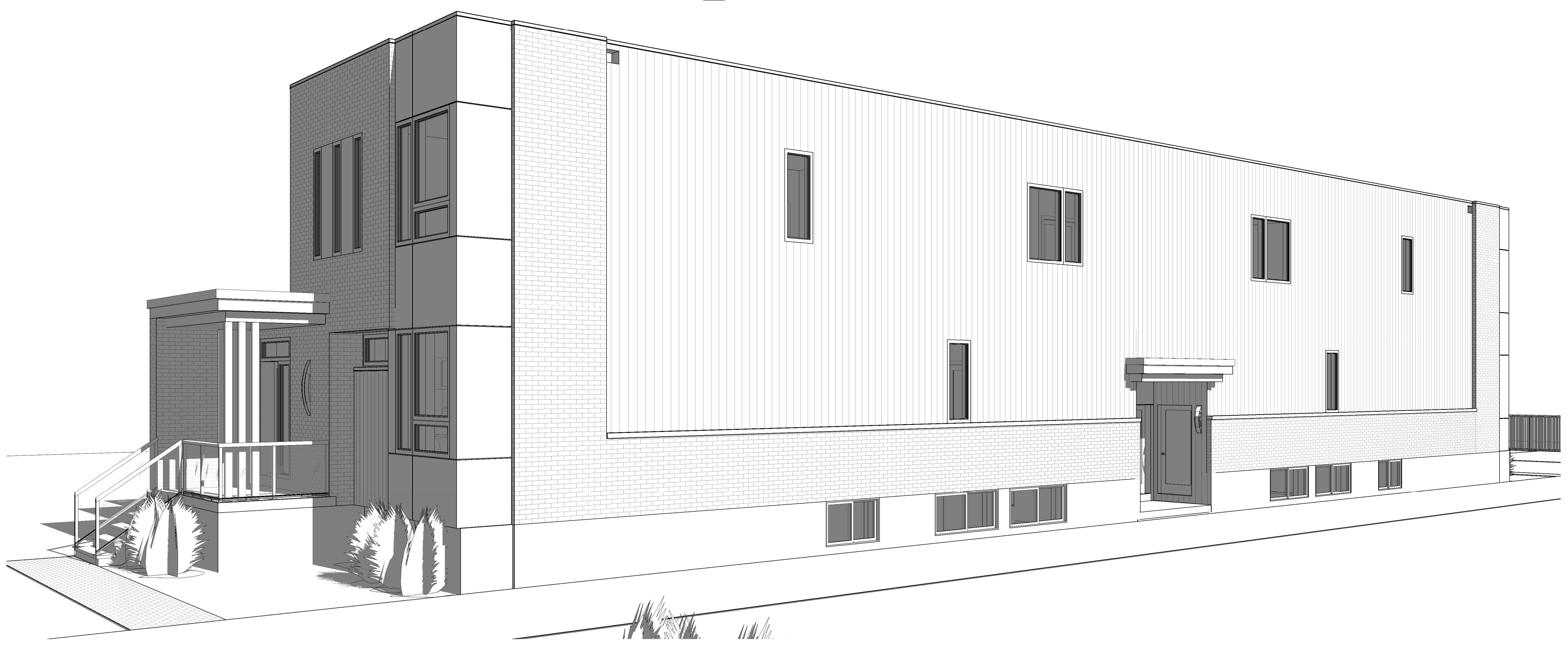
V:\2025\2025-05_Plan Construction_019 Barsona Place_Type_1\Reference Plan\Drawings\2025-05_Plan Construction Lt. 2, Pl. 617 R. 01.dwg



1 PERSPECTIVE FRONT FROM LEFT
SCALE:



2 PERSPECTIVE FRONT FROM RIGHT
SCALE:



3 PERSPECTIVE SIDE ENTRANCE
SCALE:

THIS DRAWING SHALL NOT BE USED FOR CONSTRUCTION UNTIL SIGNED AND DATED BY THE DESIGNER

FIRM BCIN: 45801
INDIVIDUAL BCIN: 41176

I REVIEW & TAKE RESPONSIBILITY FOR THE DESIGN WORK ON BEHALF OF A FIRM REGISTERED UNDER SUBSECTION 3.2.4 OF THE OBC 2024. I AM QUALIFIED & THE FIRM IS REGISTERED IN THE APPROPRIATE CLASSES/CATEGORIES.

GENERAL NOTES:
- E.A.D.E.
- THESE DRAWINGS ARE NOT FOR CONSTRUCTION UNTIL LOCAL AUTHORITIES ISSUE A PERMIT
- DO NOT SCALE DIMENSIONS. FIGURED DIMENSIONS ONLY TO BE USED
- IT IS THE RESPONSIBILITY OF THE CONTRACTOR TO CHECK & VERIFY ALL DIMENSIONS ON SITE & REPORT ALL DISCREPANCIES
- GENERAL CONTRACTOR TO CONSTRUCT IN ACCORDANCE W/ THE O.B.C. 2024-ANY MUNICIPAL BY LAWS & ALL OTHER APPLICABLE CODES

REV#	DESCRIPTION	DATE
4	D2 ISSUED	JAN 7, 2025
3	D1 ISSUED	DEC 12, 2025
2	SITE PLAN ISSUED (SURVEY)	OCT 28, 2025
1	SITE PLAN ISSUED (R&D OTTAWA)	OCT 6, 2025

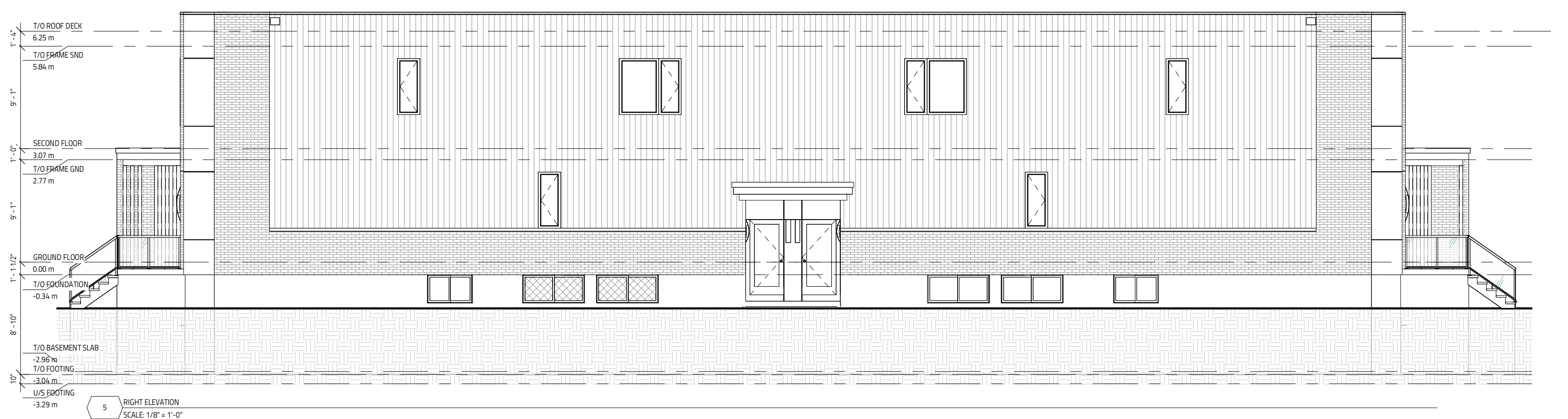
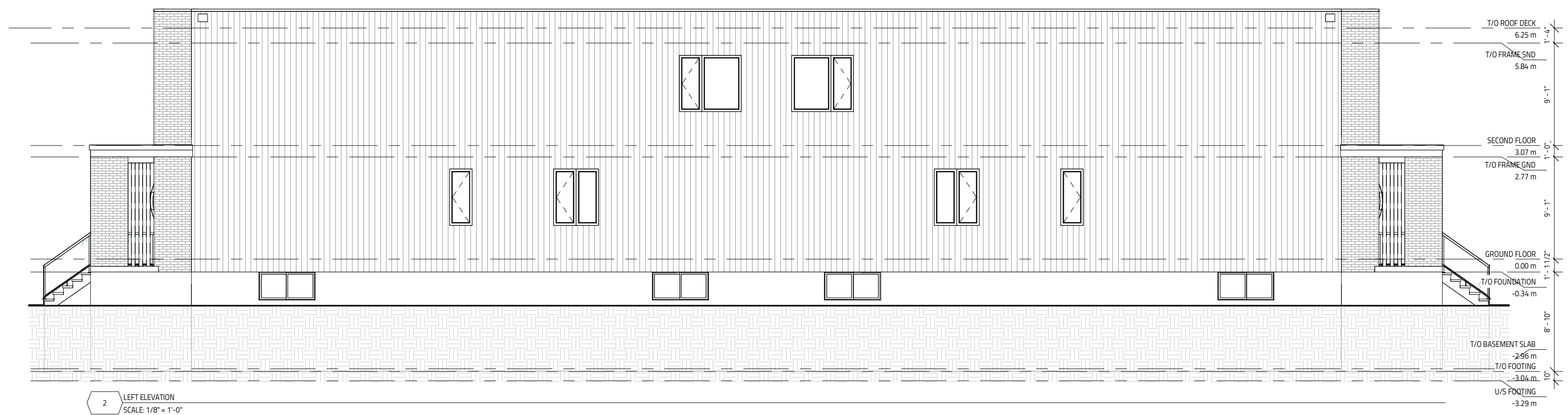
6719 BARSONA PLC.
LONG SEMI-DETACHED DWELLING
(6 UNITS TOTAL)
OTTAWA, ON

Evolution
DESIGN & DRAFTING
613-884-7068 // 613-808-7185

COVER	
DATE DRAWN: DECEMBER 8, 2025	SCALE:
DRAWN BY: MV	FILE NAME: #25-00363
CHECKED BY: MV	SHEET NO:
	A0.0

WINDOW SCHEDULE										DOOR SCHEDULE									
LEVEL	ROOM LOCATION	TAG	WINDOW TYPE	QUANTITY	HEIGHT	WIDTH	SHILL HEIGHT	HEAD/HEIGHT	UNIT #	COMMUNICATION	TAG	DOOR TYPE	COUNT	WIDTH	HEIGHT	FRAME MATERIAL	COMMENTS		
TO BASEMENT SLAB	MASTER	B0.1	SLIDER WINDOW	1	4'-0"	5'-0"	4'-7"	TO BASEMENT SLAB	UNIT A	FOYER	DA2	INTERIOR SWING DOOR	1	2'-0"	6'-8"				
TO BASEMENT SLAB	BEDROOM 3	B0.2	SLIDER WINDOW	1	2'-0"	4'-0"	6'-1"	TO BASEMENT SLAB	UNIT A	DINING	DA3	INTERIOR SWING DOOR	1	2'-0"	5'-6"				
TO BASEMENT SLAB	LIVING	B0.3	SLIDER WINDOW	1	2'-0"	5'-0"	6'-1"	TO BASEMENT SLAB	UNIT A	LIVING	DA4	INTERIOR SWING DOOR	1	2'-0"	5'-6"				
TO BASEMENT SLAB	LIVING	B0.4	SLIDER WINDOW	1	2'-0"	5'-0"	6'-1"	TO BASEMENT SLAB	UNIT A	LAUNDRY	DA5	INTERIOR DOUBLE SWING	1	4'-0"	6'-8"		SOLID CORE (SOUND)		
TO BASEMENT SLAB	LIVING	B0.5	SLIDER WINDOW	1	2'-0"	5'-0"	6'-1"	TO BASEMENT SLAB	UNIT A	MECHANICAL	DA6	INTERIOR SWING DOOR	1	2'-0"	6'-8"		SOLID CORE (SOUND)		
TO BASEMENT SLAB	LIVING	B0.6	SLIDER WINDOW	1	2'-0"	5'-0"	6'-1"	TO BASEMENT SLAB	UNIT A	BATH	DA7	INTERIOR SWING DOOR	1	2'-4"	6'-8"				
TO BASEMENT SLAB	BEDROOM 3	B0.7	SLIDER WINDOW	1	2'-0"	4'-0"	6'-1"	TO BASEMENT SLAB	UNIT A	BATH	DA8	INTERIOR SWING DOOR	1	2'-0"	6'-8"		MLLWORK		
TO BASEMENT SLAB	MASTER	B0.8	SLIDER WINDOW	1	4'-0"	5'-0"	4'-7"	TO BASEMENT SLAB	UNIT A	BEDROOM 3	DA9	INTERIOR SWING DOOR	1	2'-0"	6'-8"				
TO BASEMENT SLAB	BEDROOM 2	B0.9	SLIDER WINDOW	1	2'-0"	5'-0"	6'-1"	TO BASEMENT SLAB	UNIT A	BEDROOM 3	DA10	INTERIOR DOUBLE SWING	1	4'-0"	6'-8"				
TO BASEMENT SLAB	CORRIDOR	B0.10	SLIDER WINDOW	1	2'-0"	5'-0"	6'-1"	TO BASEMENT SLAB	UNIT A	BEDROOM 2	DA11	INTERIOR SWING DOOR	1	2'-0"	6'-8"				
TO BASEMENT SLAB	CORRIDOR	B0.11	SLIDER WINDOW	1	2'-0"	5'-0"	6'-1"	TO BASEMENT SLAB	UNIT A	BEDROOM 2	DA12	INTERIOR DOUBLE SWING	1	4'-0"	6'-8"				
TO BASEMENT SLAB	BEDROOM 2	B0.12	SLIDER WINDOW	1	2'-0"	5'-0"	6'-1"	TO BASEMENT SLAB	UNIT A	MASTER	DA13	INTERIOR SWING DOOR	1	2'-0"	6'-8"				
GROUND FLOOR	ENTRY	DC1	DOOR SIDLITE	1	6'-8"	2'-0"	0"	TO BASEMENT SLAB	UNIT A	ENSUITE	DA14	INTERIOR SWING DOOR	1	2'-4"	6'-8"				
GROUND FLOOR	FOYER	DC1	DOOR TRANSOM	1	1'-4"	5'-0"	6'-8"	TO BASEMENT SLAB	UNIT A	MASTER	DA15	INTERIOR SWING DOOR	1	2'-4"	6'-8"				
GROUND FLOOR	FOYER	DD1	DOOR SIDLITE	1	6'-8"	2'-0"	0"	TO BASEMENT SLAB	UNIT A	BEDROOM 2	DA16	INTERIOR SWING DOOR	1	2'-0"	6'-8"				
GROUND FLOOR	ENTRY	DD1	DOOR TRANSOM	1	1'-4"	5'-0"	6'-8"	TO BASEMENT SLAB	UNIT A	TRANSOM ABOVE DOOR	FOYER	DD2	INTERIOR SWING DOOR	1	2'-0"	6'-8"			
GROUND FLOOR	LIVING	W1.1	FIXED	1	4'-4"	4'-0"	3'-8"	TO BASEMENT SLAB	UNIT B	STRG.	DB3	INTERIOR SWING DOOR	1	2'-0"	5'-0"				
GROUND FLOOR	LIVING	W1.1	AWNING	1	1'-8"	4'-0"	2'-0"	TO BASEMENT SLAB	UNIT B	UTILITY	DB4	INTERIOR SWING DOOR	1	2'-0"	5'-0"				
GROUND FLOOR	LIVING	W1.1	FIXED	1	6'-0"	2'-0"	2'-0"	TO BASEMENT SLAB	UNIT B	CORRIDOR	DB5	INTERIOR DOUBLE SWING	1	4'-0"	6'-8"		SOLID CORE (SOUND)		
GROUND FLOOR	LIVING	W1.2	FIXED	1	1'-8"	6'-10"	6'-4"	TO BASEMENT SLAB	UNIT B	CORRIDOR	DB6	INTERIOR SWING DOOR	1	2'-0"	6'-8"		SOLID CORE (SOUND)		
GROUND FLOOR	BEDROOM 3	W1.3	CASEMENT	1	5'-0"	2'-0"	3'-0"	TO BASEMENT SLAB	UNIT B	CORRIDOR	DB7	INTERIOR SWING DOOR	1	2'-4"	6'-8"				
GROUND FLOOR	MASTER	W1.4	FIXED	1	5'-0"	2'-0"	3'-0"	TO BASEMENT SLAB	UNIT B	LAL	DB8	INTERIOR SWING DOOR	1	2'-0"	6'-8"		MLLWORK		
GROUND FLOOR	MASTER	W1.4	CASEMENT	1	5'-0"	2'-0"	3'-0"	TO BASEMENT SLAB	UNIT B	CORRIDOR	DB9	INTERIOR SWING DOOR	1	2'-0"	6'-8"				
GROUND FLOOR	MASTER	W1.5	FIXED	1	5'-0"	2'-0"	3'-0"	TO BASEMENT SLAB	UNIT B	BEDROOM 3	DB10	INTERIOR DOUBLE SWING	1	4'-0"	6'-8"				
GROUND FLOOR	MASTER	W1.5	CASEMENT	1	5'-0"	2'-0"	3'-0"	TO BASEMENT SLAB	UNIT B	CORRIDOR	DB11	INTERIOR SWING DOOR	1	2'-0"	6'-8"				
GROUND FLOOR	BEDROOM 2	W1.6	CASEMENT	1	5'-0"	2'-0"	3'-0"	TO BASEMENT SLAB	UNIT B	BEDROOM 2	DB12	INTERIOR DOUBLE SWING	1	4'-0"	6'-8"				
GROUND FLOOR	LIVING	W1.7	FIXED	1	1'-8"	6'-10"	6'-4"	TO BASEMENT SLAB	UNIT B	CORRIDOR	DB13	INTERIOR SWING DOOR	1	2'-0"	6'-8"				
GROUND FLOOR	LIVING	W1.8	FIXED	1	4'-4"	4'-0"	3'-8"	TO BASEMENT SLAB	UNIT B	MASTER	DB14	INTERIOR SWING DOOR	1	2'-4"	6'-8"				
GROUND FLOOR	LIVING	W1.8	AWNING	1	1'-8"	4'-0"	2'-0"	TO BASEMENT SLAB	UNIT B	WIC	DB15	INTERIOR SWING DOOR	1	2'-4"	6'-8"				
GROUND FLOOR	LIVING	W1.8	FIXED	1	6'-0"	2'-0"	2'-0"	GROUND FLOOR	UNIT C	LOWER FOYER	DA1	EXTERIOR DOOR	1	3'-0"	6'-8"		INSULATED, 20 MIN FRR		
GROUND FLOOR	BEDROOM 2	W1.9	CASEMENT	1	5'-0"	2'-0"	3'-0"	GROUND FLOOR	UNIT C	FOYER	DC1	EXTERIOR DOOR	1	3'-0"	6'-8"		GLASS, INSULATED, TRANSOM ABOVE		
GROUND FLOOR	BEDROOM 2	W1.10	CASEMENT	1	5'-0"	2'-0"	3'-0"	GROUND FLOOR	UNIT C	FOYER	DC2	INTERIOR SLONG PANEL DOOR	1	2'-4"	6'-8"				
GROUND FLOOR	MASTER	W2.1	AWNING	1	1'-8"	4'-0"	12'-1"	GROUND FLOOR	UNIT C	DINING	DC3	INTERIOR DOUBLE SWING	1	5'-0"	6'-8"		SOLID CORE (SOUND)		
GROUND FLOOR	MASTER	W2.12	AWNING	1	1'-8"	4'-0"	12'-1"	GROUND FLOOR	UNIT C	CORRIDOR	DC4	INTERIOR SWING DOOR	1	2'-0"	6'-8"		SOLID CORE (SOUND)		
SECOND FLOOR	MASTER	W2.1	FIXED	1	4'-4"	4'-0"	3'-8"	GROUND FLOOR	UNIT C	BEDROOM 3	DC5	INTERIOR SWING DOOR	1	2'-0"	6'-8"				
SECOND FLOOR	MASTER	W2.1	FIXED	1	6'-0"	2'-0"	2'-0"	GROUND FLOOR	UNIT C	BEDROOM 3	DC6	INTERIOR DOUBLE SWING	1	5'-0"	6'-8"				
SECOND FLOOR	MASTER	W2.2	FIXED	1	6'-0"	1'-2"	2'-0"	GROUND FLOOR	UNIT C	BATH	DC7	INTERIOR SWING DOOR	1	2'-4"	6'-8"				
SECOND FLOOR	MASTER	W2.3	FIXED	1	6'-0"	1'-2"	2'-0"	GROUND FLOOR	UNIT C	CORRIDOR	DC8	INTERIOR SWING DOOR	1	2'-4"	6'-8"				
SECOND FLOOR	WIC	W2.4	FIXED	1	6'-0"	1'-2"	2'-0"	GROUND FLOOR	UNIT C	MASTER	DC9	INTERIOR SWING DOOR	1	2'-0"	6'-8"				
SECOND FLOOR	BEDROOM 2	W2.5	FIXED	1	4'-4"	3'-8"	3'-8"	GROUND FLOOR	UNIT C	WIC	DC10	INTERIOR SWING DOOR	1	2'-4"	6'-8"				
SECOND FLOOR	BEDROOM 2	W2.5	AWNING	1	1'-8"	3'-8"	2'-0"	GROUND FLOOR	UNIT C	ENSUITE	DC11	INTERIOR SWING DOOR	1	2'-4"	6'-8"				
SECOND FLOOR	BEDROOM 2	W2.5	FIXED	1	6'-0"	2'-0"	2'-0"	GROUND FLOOR	UNIT C	BEDROOM 2	DC12	INTERIOR SWING DOOR	1	2'-0"	6'-8"				
SECOND FLOOR	WIC	W2.6	FIXED	1	5'-0"	3'-8"	3'-8"	GROUND FLOOR	UNIT C	BEDROOM 2	DC13	INTERIOR DOUBLE SWING	1	4'-0"	6'-8"				
SECOND FLOOR	DINING	W2.6	CASEMENT	1	5'-0"	2'-0"	3'-0"	GROUND FLOOR	UNIT C	LOWER FOYER	DE1	EXTERIOR DOOR	1	3'-0"	6'-8"		INSULATED, 20 MIN FRR		
SECOND FLOOR	DINING	W2.7	FIXED	1	5'-0"	3'-8"	3'-8"	GROUND FLOOR	UNIT D	LOWER FOYER	DB1	EXTERIOR DOOR	1	3'-0"	6'-8"		INSULATED, 20 MIN FRR		
SECOND FLOOR	DINING	W2.7	CASEMENT	1	5'-0"	2'-0"	3'-0"	GROUND FLOOR	UNIT D	ENTRY	DD1	EXTERIOR DOOR	1	3'-0"	6'-8"		GLASS, INSULATED, TRANSOM ABOVE		
SECOND FLOOR	BEDROOM 2	W2.8	FIXED	1	4'-4"	3'-8"	3'-8"	GROUND FLOOR	UNIT D	FOYER	DD2	INTERIOR SLONG PANEL DOOR	1	3'-4"	6'-8"				
SECOND FLOOR	BEDROOM 2	W2.8	AWNING	1	1'-8"	3'-8"	2'-0"	GROUND FLOOR	UNIT D	MECHANICAL	DD3	INTERIOR DOUBLE SWING	1	5'-0"	6'-8"		SOLID CORE (SOUND)		
SECOND FLOOR	BEDROOM 2	W2.8	FIXED	1	6'-0"	2'-0"	2'-0"	GROUND FLOOR	UNIT D	LAUNDRY	DD4	INTERIOR SWING DOOR	1	2'-4"	6'-8"		SOLID CORE (SOUND)		
SECOND FLOOR	WIC	W2.9	FIXED	1	6'-0"	1'-2"	2'-0"	GROUND FLOOR	UNIT D	CORRIDOR	DD5	INTERIOR SWING DOOR	1	2'-0"	6'-8"				
SECOND FLOOR	MASTER	W2.10	FIXED	1	6'-0"	1'-2"	2'-0"	GROUND FLOOR	UNIT D	BEDROOM 3	DD6	INTERIOR DOUBLE SWING	1	5'-0"	6'-8"				
SECOND FLOOR	MASTER	W2.11	FIXED	1	6'-0"	1'-2"	2'-0"	GROUND FLOOR	UNIT D	CORRIDOR	DD7	INTERIOR SWING DOOR	1	1'-8"	6'-8"				
SECOND FLOOR	MASTER	W2.12	FIXED	1	4'-4"	4'-0"	3'-8"	GROUND FLOOR	UNIT D	CORRIDOR	DD8	INTERIOR SWING DOOR	1	2'-4"	6'-8"				
SECOND FLOOR	MASTER	W2.12	FIXED	1	6'-0"	2'-0"	2'-0"	GROUND FLOOR	UNIT D	CORRIDOR	DD9	INTERIOR SWING DOOR	1	2'-0"	6'-8"				
SECOND FLOOR	BEDROOM 3	W2.13	CASEMENT	1	5'-0"	2'-0"	3'-0"	GROUND FLOOR	UNIT D	MASTER	DD10	INTERIOR SWING DOOR	1	2'-4"	6'-8"				
SECOND FLOOR	LIVING	W2.14	CASEMENT	1	5'-0"	2'-0"	3'-0"	GROUND FLOOR	UNIT D	WIC	DD11	INTERIOR SWING DOOR	1	2'-4"	6'-8"				
SECOND FLOOR	LIVING	W2.14	FIXED	1	5'-0"	3'-8"	3'-8"	GROUND FLOOR	UNIT D	CORRIDOR	DD12	INTERIOR SWING DOOR	1	2'-0"	6'-8"				
SECOND FLOOR	LIVING	W2.15	FIXED	1	5'-0"	3'-8"	3'-8"	GROUND FLOOR	UNIT D	BEDROOM 2	DD13	INTERIOR DOUBLE SWING	1	4'-0"	6'-8"				
SECOND FLOOR	LIVING	W2.15	CASEMENT	1	5'-0"	2'-0"	3'-0"	GROUND FLOOR	UNIT D	LOWER FOYER	DF1	EXTERIOR DOOR	1	3'-0"	6'-8"		INSULATED, 20 MIN FRR		
SECOND FLOOR	BEDROOM 3	W2.16	CASEMENT	1	5'-0"	2'-0"	3'-0"	SECOND FLOOR	UNIT E	LOWER FOYER	DE2	INTERIOR SLONG PANEL DOOR	1	2'-4"	6'-8"				
SECOND FLOOR	BEDROOM 3	W2.16	CASEMENT	1	5'-0"	2'-0"	3'-0"	SECOND FLOOR	UNIT E	MECHANICAL	DE3	INTERIOR DOUBLE SWING	1	4'-0"	6'-8"		SOLID CORE (SOUND)		
SECOND FLOOR	UNIT E	LAUNDRY	DE4	INTERIOR SWING DOOR	1	2'-0"	6'-8"	SECOND FLOOR	UNIT E	LAUNDRY	DE4	INTERIOR SWING DOOR	1	2'-0"	6'-8"		SOLID CORE (SOUND)		
SECOND FLOOR	UNIT E	BATH	DE5	INTERIOR SWING DOOR	1	2'-4"	6'-8"	SECOND FLOOR	UNIT E	BATH	DE5	INTERIOR SWING DOOR	1	2'-4"	6'-8"		MLLWORK		
SECOND FLOOR	UNIT E	BATH	DE6	INTERIOR SWING DOOR	1	2'-0"	6'-8"	SECOND FLOOR	UNIT E	BEDROOM 3	DE7	INTERIOR SWING DOOR	1	2'-0"	6'-8"				
SECOND FLOOR	UNIT E	BEDROOM 3	DE8	INTERIOR DOUBLE SWING	1	4'-0"	6'-8"	SECOND FLOOR	UNIT E	BEDROOM 3	DE8	INTERIOR DOUBLE SWING	1	4'-0"	6'-8"				
SECOND FLOOR	UNIT E	BEDROOM 2	DE9	INTERIOR SWING DOOR	1	2'-0"	6'-8"	SECOND FLOOR	UNIT E	BEDROOM 2	DE9	INTERIOR SWING DOOR	1	2'-0"	6'-8"				
SECOND FLOOR	UNIT E	BEDROOM 2	DE10	INTERIOR DOUBLE SWING	1	4'-0"	6'-8"	SECOND FLOOR	UNIT E	MASTER	DE11	INTERIOR SWING DOOR	1	2'-0"	6'-8"				
SECOND FLOOR	UNIT E	ENSUITE	DE12	INTERIOR SWING DOOR	1	2'-4"	6'-8"	SECOND FLOOR	UNIT E	ENSUITE	DE12	INTERIOR SWING DOOR	1	2'-4"	6'-8"				
SECOND FLOOR	UNIT F	LAUNDRY	DF1	INTERIOR SWING DOOR	1	2'-4"	6'-8"	SECOND FLOOR	UNIT F	MASTER	DF13	INTERIOR SWING DOOR	1	2'-4"	6'-8"				
SECOND FLOOR	UNIT F	LOWER FOYER	DF2	INTERIOR SLONG PANEL DOOR	1	3'-4"	6'-8"	SECOND FLOOR	UNIT F	CORRIDOR	DF3	INTERIOR DOUBLE SWING	1	4'-0"	6'-8"		SOLID CORE (SOUND)		
SECOND FLOOR	UNIT F	CORRIDOR	DF4	INTERIOR SWING DOOR	1	2'-0"	6'-8"	SECOND FLOOR	UNIT F	CORRIDOR	DF4	INTERIOR SWING DOOR	1	2'-0"	6'-8"		SOLID CORE (SOUND)		
SECOND FLOOR	UNIT F	CORRIDOR	DF5	INTERIOR SWING DOOR	1	2'-4"	6'-8"	SECOND FLOOR	UNIT F	CORRIDOR	DF5	INTERIOR SWING DOOR	1	2'-4"	6'-8"				
SECOND FLOOR	UNIT F	WIC	DF6	INTERIOR SWING DOOR	1	2'-0"	6'-8"	SECOND FLOOR	UNIT F	WIC	DF6	INTERIOR SWING DOOR	1	2'-0"	6'-8"		MLLWORK		
SECOND FLOOR	UNIT F	CORRIDOR	DF7	INTERIOR SWING DOOR	1	2'-4"	6'-8"	SECOND FLOOR	UNIT F	CORRIDOR	DF7	INTERIOR SWING DOOR	1	2'-4"	6'-8"				
SECOND FLOOR	UNIT F	BEDROOM 3	DF8	INTERIOR DOUBLE SWING	1	4'-0"	6'-8"	SECOND FLOOR	UNIT F	BEDROOM 3	DF8	INTERIOR DOUBLE SWING	1	4'-0"	6'-8"				
SECOND FLOOR	UNIT F	CORRIDOR	DF9	INTERIOR SWING DOOR	1	2'-0"	6'-8"	SECOND FLOOR	UNIT F	CORRIDOR	DF9	INTERIOR SWING DOOR	1	2'-0"	6'-8"				
SECOND FLOOR	UNIT F	BEDROOM 2	DF10	INTERIOR DOUBLE SWING	1	5'-0"	6'-8"	SECOND FLOOR	UNIT F	BEDROOM 2	DF10	INTERIOR DOUBLE SWING	1	5'-0"	6'-8"				
SECOND FLOOR	UNIT F	CORRIDOR	DF11	INTERIOR SWING DOOR	1	2'-0"	6'-8"	SECOND FLOOR	UNIT F	CORRIDOR	DF11	INTERIOR SWING DOOR	1	2'-0"	6'-8"				
SECOND FLOOR	UNIT F	MASTER	DF12	INTERIOR SWING DOOR	1	2'-4"	6'-8"	SECOND FLOOR	UNIT F	MASTER	DF12	INTERIOR SWING DOOR	1	2'-4"	6'-8"				
SECOND FLOOR	UNIT F	WIC	DF13	INTERIOR SWING DOOR	1	2'-4"	6'-8"	SECOND FLOOR	UNIT F	WIC	DF13	INTERIOR SWING DOOR	1	2'-4"	6'-8"				
GRAND TOTAL 60																			

MATERIAL NAME	AREA
Ac Barrier	6093 ft²
Ac Space	2567 ft²
Concrete Cast-in-Place	3040 ft²
Door - Trim - Exterior	90 ft²
Facia	4 ft²
Gas - Tempered 10mm	265 ft²
System Board - 1/2"	16920 ft²
System Board - 1/2" Fiberglass	24 ft²
System Board - 1/2" FRR	3866 ft²
System Board - 5/8" FRR	5763 ft²
System Core Board - 1" FRR	1221 ft²
Masonry Brick	1503 ft²
Meal - Stone	4720 ft²
Milwork Wood - White Oak	102 ft²
Rigid Insulation	175 ft²
Rigid Insulation - Sem	2486 ft²
Sheathing 5/8" - Glass Fiber FRR	4666 ft²
Sheathing 7/16" - OSB	1360 ft²
Sliding - 6" Vertical	4364 ft²
Sliding - Cement Board	435 ft²
Sliding - Cement Board 2	4 ft²
Sliding - Cement Board - Clip Layer	396 ft²
Tile - Shower	24 ft²
Vapor Barrier	9830 ft²
Window Frame	22 ft²
Wood - Lin	12 ft²
Wood - Stud	10409 ft²
Wood - Stud - FRR	2320 ft²



MATERIALS USED & INSTALLATION

PROCEDURES MUST CONFORM TO:

1. SPECIFICATIONS & NOTES SHOWN ON THIS DRAWING
2. NOTES & DETAILS SHOWN ON STRUCTURAL DRAWINGS
3. MANUFACTURER PRODUCT DETAILS AND SPECIFICATIONS
4. PROVISIONS IN THE 2024 ONTARIO BUILDING CODE

IT IS THE RESPONSIBILITY OF THE CONTRACTOR TO CHECK & VERIFY THE WINDOW AND DOOR DIMENSIONS ALONG WITH WINDOW TYPE AND SWING WITH THE DRAWINGS AND CONDITIONS ON SITE & REPORT ALL DISCREPANCIES TO DESIGNER PRIOR TO PUTTING WINDOW & DOOR GROUPS INTO PRODUCTION.

METAL PANELING IS AL13 COMPOSITE PANEL CONFORMING TO CANULC S134, CANULC S102, NFW 289 & ASTM B841 CONFORMING TO CCMC 14137-L

METAL ROLLED WALL PANEL IS LUX FOLDED WALL CONFORMING TO CCMC 14137-L

FLYMOB BITUMINOUS FLAT ROOF MEMBRANE IS SOMPREMA RESISTO CONFORMING TO CCMC 13288-L

EXTERIOR FINISH EPDS IS ADEK-AP'S SYSTEM CONFORMING TO CCMC 12913-R

EXTERIOR FINISH CEMENT BOARD PANELING IS HARDEE PANEL H25 CONFORMING TO CCMC 12678-R

REV.	DESCRIPTION	DATE
4	D2 ISSUED	JAN 7, 2025
3	D1 ISSUED	DEC 12, 2025
2	SITE PLAN ISSUED (SURVEY)	OCT 28, 2025
1	SITE PLAN ISSUED (GEO OTTAWA)	OCT 4, 2025

6719 BARSONA PLC.
LONG SEMI-DETACHED DWELLING
(6 UNITS TOTAL)
OTTAWA, ON

THIS DRAWING SHALL NOT BE USED FOR CONSTRUCTION UNTIL SIGNED AND DATED BY THE DESIGNER

FIRM BCIN 45801
INDIVIDUAL BCIN 41176

RENEW & TAKE RESPONSIBILITY FOR THE DESIGN WORK ON BEHALF OF A FIRM REGISTERED UNDER SUBSECTION 3.2.4 OF THE OBC 2024.1 AM QUALIFIED & THE FIRM IS REGISTERED IN THE APPROPRIATE CLASSES/CATEGORIES.

613-884-7068 /// 613-808-7185

DATE DRAWN		SCALE	
DECEMBER 8, 2025	As Indicated		
DRAWN BY: MV	FILE NAME: #25-00363		
DESIGNED BY: MV	SHEET NO: A4.0		

ELEVATIONS

GENERAL NOTES:
- E & D.E.
- THESE DRAWINGS ARE NOT FOR CONSTRUCTION UNTIL LOCAL AUTHORITIES ISSUE A PERMIT
- DO NOT SCALE DIMENSIONS, FIGURED DIMENSIONS ONLY TO BE USED
- IT IS THE RESPONSIBILITY OF THE CONTRACTOR TO CHECK & VERIFY ALL DIMENSIONS ON SITE & REPORT ALL DISCREPANCIES
- GENERAL CONTRACTOR TO CONSTRUCT IN ACCORDANCE W/ THE O.B.C. 2024-ANY MUNICIPAL BY LAWS & ALL OTHER APPLICABLE CODES



EVO
DESIGN



