

December 22, 2025

Tree Information Report – 6719 Barsona Place, Ottawa

Report prepared by,
Chris McIntyre
Trillium Tree Experts
613-831-4475
trilliumtree@bellnet.ca

Property contact,
Pagi Construction
Patrick Macorig
info@pagi-inc.ca
613-796-8383

**Committee of Adjustment
Received | Reçu le**

2026-01-14


**City of Ottawa | Ville d'Ottawa
Comité de dérogation**

This Tree Information Report is being submitted as a partial requirement for the development of this property. A site visit was conducted by Chris McIntyre, Certified Arborist ON-1219A, on December 18, 2025.

The focus of this report is to outline the current vegetation on the site, detailing species, size, and condition. While evaluating the impact the proposed development may have on the vegetation, and how to mitigate damage to retained trees.

The report is based on the current plans provided by Patrick Macorig. Moving forward if any changes are made to the proposed build or trees cannot be protected as outlined, it will be the responsibility of Pagi Construction for prompting a review of this TIR.

Identified within the report is also the tree planting plan, to be implemented during the landscape phase of the project.


Chris McIntyre

December 22, 2025

Date

Patrick Macorig

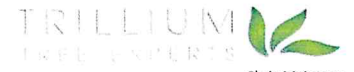
Date



Tree No.	Species	D.B.H (cm)	Ownership	Condition of tree	Client's reason for removal	Arborist recommendation
1	Red maple	61	Private	Tree health, vigor and structure are all considered fair.	Within footprint of development.	Remove. Within footprint of development.
2	Norway maple	60	Neighbour	Tree health and vigor are fair. Structure is poor. Co-dominate, with heavy lean, decay present in trunk.	Tree to be retained.	Retain - protect. CRZ fencing to be installed at 5ft. Below protection measures to be implemented. Significant reduction pruning required to reduce canopy off site.
3	Manitoba maple	39	Private	Tree health, vigor are fair, structure is poor. Weak codominant union, significant lean.	Within footprint of development.	Remove. Tree is not viable long term. Conflict with construction.
4	Manitoba maple	22	Private	Tree health, vigor and structure are all considered poor.	Within footprint of development.	Remove. Tree is not viable long term. Conflict with construction.
5	Manitoba maple	26	Private	Tree health and vigor are fair, structure is poor.	Within footprint of development.	Remove. Tree is not viable long term. Conflict with construction.
6	Manitoba maple	32	Private	Tree health, vigor and structure are all considered fair.	Within footprint of development.	Remove. Conflict with construction.
7	Manitoba maple	46	Private	Tree health, vigor and structure are all considered poor. Extensive decay present due to crown failure.	Within footprint of development.	Remove - Safety.
<p>Tree Protection Measures for Retained Trees.</p> <p>The following are measures to be implemented prior and during the construction process.</p> <ul style="list-style-type: none"> -Critical root zone of retained trees must be protected as outlined above. Snow or metal fencing must be erected around the CRZ and signage should be installed to identify tree is being protected. -Pruning must be performed prior to construction to ensure tree limbs will not be in conflict with equipment and construction. Permission must be obtained to prune Municipal or neighbors trees. (performed by Certified Arborist). -No material or equipment is permitted within any CRZ. -No signs, notices or posters may be attached to the tree. -No grade changes within any CRZ. -Ensure exhaust fumes from equipment are not directed towards tree canopy's. -After excavation is complete exposed and damaged roots should be pruned (performed by Certified Arborist). 						

Tree Information Report
6719 Barsona Place, Ottawa

Site Visit - December 2026
Report Completed - December 2026



Chris McIntyre
ISA Certified Arborist
ON-1219A



Tree 1



Tree 2

Tree Information Report
6719 Barsona Place, Ottawa

Site Visit - December 2026
Report Completed - December 2026



Chris McIntyre
ISA Certified Arborist
ON-1219A



Tree 3



Tree 4

Tree Information Report
6719 Barsona Place, Ottawa

Site Visit - December 2026
Report Completed - December 2026



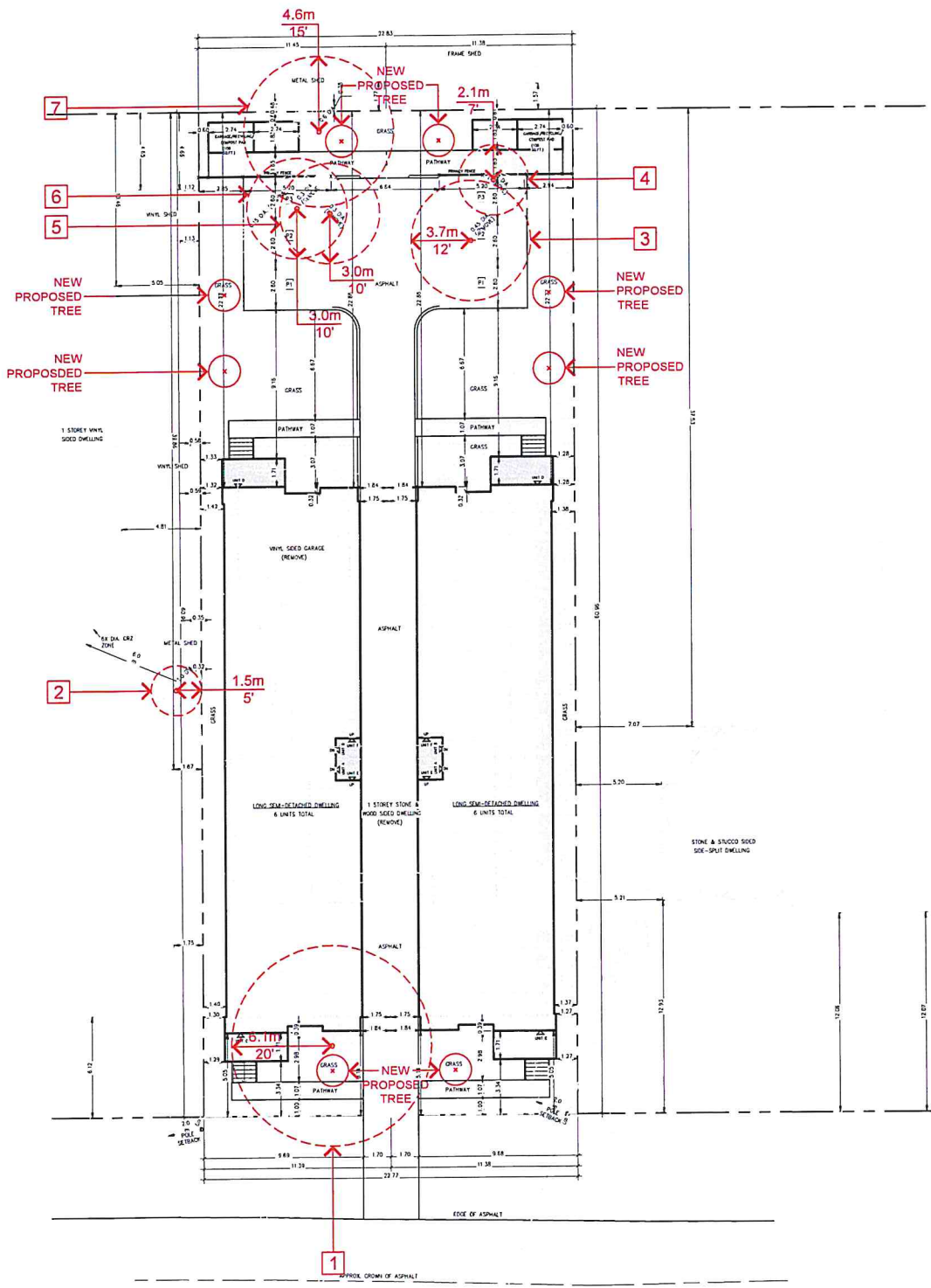
Chris McIntyre
ISA Certified Arborist
ON-1219A



Tree 5



Tree 5



BARSONA PLC.

6719 BARSONA PLACE
 OTTAWA ONTARIO
 TREE INFORMATION REPORT



REVISED JANUARY 8, 2026

