

Highway 417 Rapid Bridge Replacements



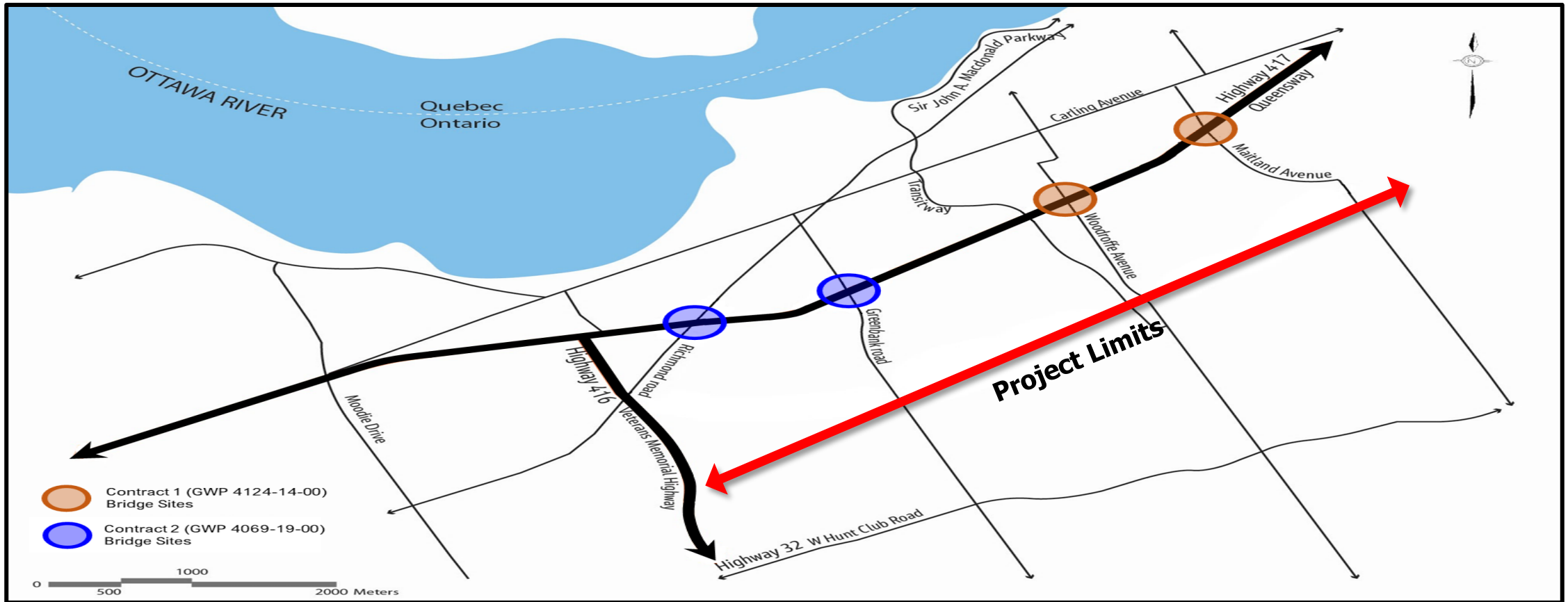
Woodroffe Avenue & Maitland Avenue
GWP 4124-14-00



City of Ottawa
Public Works & Infrastructure Committee
February 26, 2026



Project Overview





Scope of Work - General

- Rapid bridge replacements of Woodroffe Avenue and Maitland Avenue underpasses including provision of AT facilities
- Reconstruction and profile adjustment of Woodroffe Avenue and Maitland Avenue approaches
- New retaining walls at Woodroffe Avenue and extension of existing retaining walls at Maitland Avenue
- Overhead sign replacement – 3 locations
- Resurfacing Highway 417 – various locations – Highway 416 to Maitland Avenue
- Snow Barrier installation at Clyde Avenue underpass



Scope of Work – Rapid Bridge Replacements

➤ **Maitland Ave. and Woodroffe Ave.**

- Establish fenced construction staging areas – located within the Interchanges
- Construct new decks and integral pier in staging areas
- Widening of abutments / construction of substructure
- Demolition of existing bridge decks in-place – weekend closures
- Reinstatement of decks using rapid replacement technology – weekend closures
- Profile adjustments / approach reconstruction
- Restoration of impacted areas

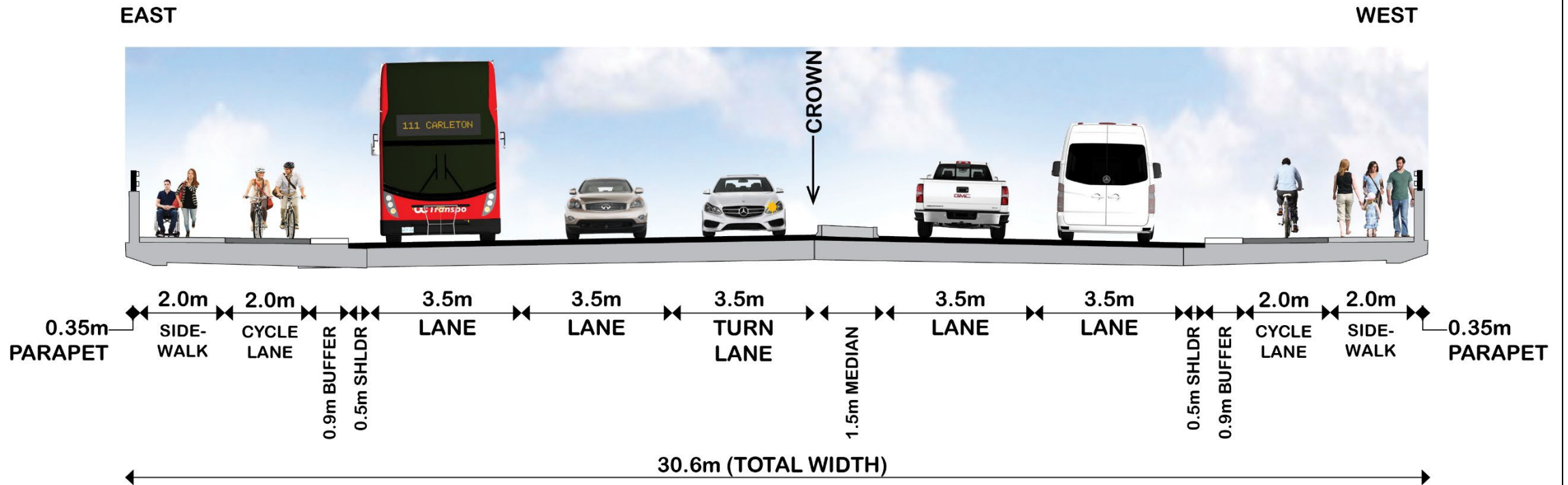
➤ **Maitland Ave. & Woodroffe Ave.: ± 750mm grade raise**

➤ **Maitland Ave.: ± 10m widening (approx. 3.25m East / 6.75m West) – accommodates Active Transportation**

➤ **Woodroffe Ave.: ± 6.5m widening (approx. 6.5m East) – accommodates Active Transportation**

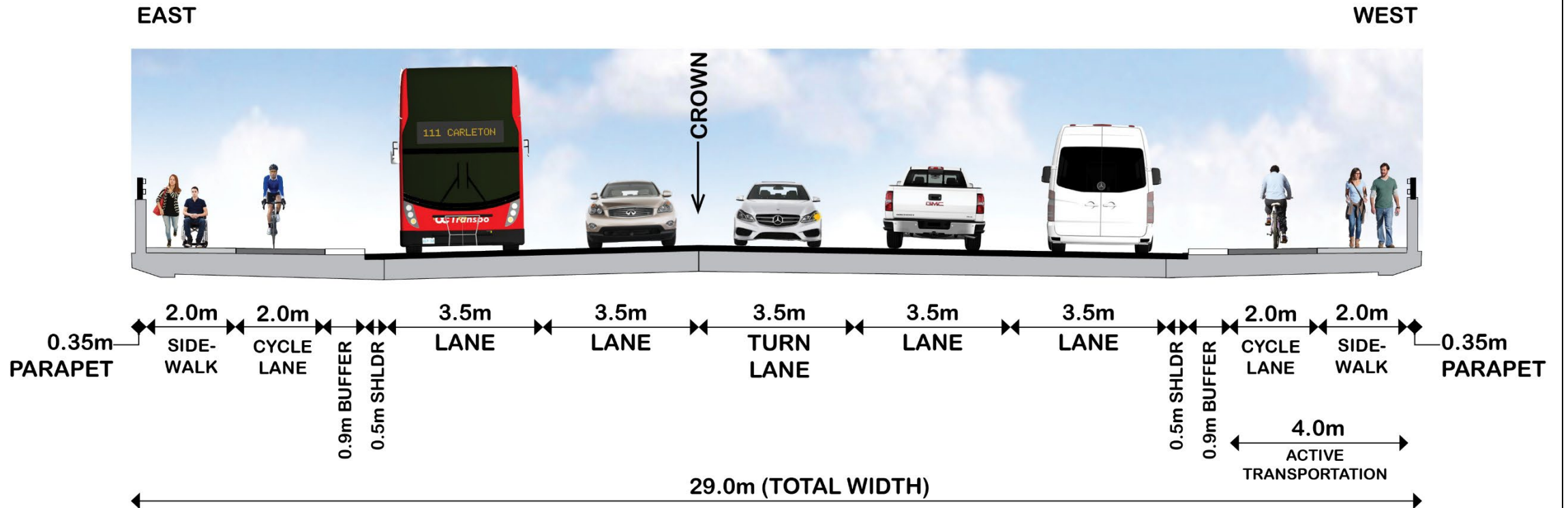


Woodroffe Avenue Cross-section





Maitland Avenue Cross-section





Staging Area – Woodroffe Avenue





Rapid Replacement – Woodroffe Avenue

- 24-hour full closure of Highway 417 for bridge demolition / removal
- Woodroffe Avenue to be closed for period of 6 to 7 weeks for abutment and substructure construction and profile adjustment
- 48-72 hour full closure of Highway 417 for bridge installation
 - Highway 417 closed at Woodroffe Avenue – ramp surfing to be utilized

Ramp closures:

- Woodroffe E-S (Long Duration)
- Woodroffe N-E (Long Duration)
- Woodroffe S-W (Long Duration) – with the exception of the weekend closures (ramp surfing)
- Pinecrest S-E
- Pinecrest N-E
- Maitland N/S-W

Rapid Replacement Detours – Highway 417 - Woodroffe

MINISTRY OF TRANSPORTATION, ONTARIO

ADVANCE NOTIFICATION SIGN MESSAGES

| | ANS-1A (HWY 417 EB) | ANS-1B (HWY 417 EB ON-RAMPS) | ANS-2A (HWY 417 WB) | ANS-2B (HWY 417 WB ON-RAMPS) |
|--|---|--|---|--|
| ADVANCE NOTIFICATION – TWO WEEKS PRIOR TO FULL CLOSURE | HIGHWAY 417 EAST TO BE CLOSED AT WOODROFFE DD MMM YY – DD MMM YY AUTOROUTE 417 EST SERA FERMÉE À WOODROFFE JJ MMM AA – JJ MMM AA | ACCESS TO 417 EAST TO BE CLOSED AT PINECREST AND WOODROFFE DD MMM YY – DD MMM YY ACCÈS À 417 EST SERA FERMÉE À PINECREST ET WOODROFFE JJ MMM AA – JJ MMM AA | HIGHWAY 417 WEST TO BE CLOSED AT WOODROFFE DD MMM YY – DD MMM YY AUTOROUTE 417 OUEST SERA FERMÉE À WOODROFFE JJ MMM AA – JJ MMM AA | ACCESS TO 417 WEST TO BE CLOSED AT MATLAND AND WOODROFFE DD MMM YY – DD MMM YY ACCÈS À 417 OUEST SERA FERMÉE À MATLAND ET WOODROFFE JJ MMM AA – JJ MMM AA |
| ADVANCE WARNING – DURING FULL CLOSURE | HIGHWAY 417 EAST CLOSED AT WOODROFFE FOLLOW D-1 AUTOROUTE 417 EST FERMÉE SUIVRE D-1 | ACCESS TO 417 EAST CLOSED AT PINECREST AND WOODROFFE FOLLOW D-3 ACCÈS À 417 EST FERMÉE SUIVRE D-3 | HIGHWAY 417 WEST CLOSED AT WOODROFFE FOLLOW D-2 AUTOROUTE 417 OUEST FERMÉE SUIVRE D-2 | ACCESS TO 417 WEST CLOSED AT MATLAND AND WOODROFFE FOLLOW D-4 ACCÈS À 417 OUEST FERMÉE SUIVRE D-4 |

NOTES:

1. PLACEMENT OF TEMPORARY CONDITION SIGNAGE SHALL NOT OBSTRUCT MOTORISTS' VIEW OF EXISTING SIGNAGE.
2. MINIMUM SEPARATION BETWEEN ENGLISH AND FRENCH SIGNAGE SHALL BE 50M ON CITY STREETS AND 150m ON HIGHWAY 417.
3. ADVANCE NOTIFICATION SIGNS (ANS) TO BE INSTALLED 2 WEEKS PRIOR TO THE CLOSURE.
4. ADVANCE WARNING SIGNS (AWS) AND DETOUR TRAILBLAZER SIGNS (DTS) SHALL BE INSTALLED AND REMAIN IN PLACE DURING THE CLOSURE. TABS SHALL BE USED TO CHANGE SIGNS FROM ADVANCE NOTIFICATION TO ADVANCE WARNING.
5. SIGNAGE MAY REQUIRE COORDINATION WITH ADJACENT CONSTRUCTION ZONES. CONTRACTOR TO COORDINATE WITH CONTRACT ADMINISTRATOR.
6. RAMP CLOSURES SHALL BE AS SPECIFIED ELSEWHERE IN THE CONTRACT DOCUMENTS.

METRIC
DIMENSIONS ARE IN METRES AND/OR
MILLIMETRES UNLESS OTHERWISE SHOWN



CONT –
WP 4124-14-00
HWY 417 FULL CLOSURE
WOODROFFE STRUCTURE
DETOUR ROUTING

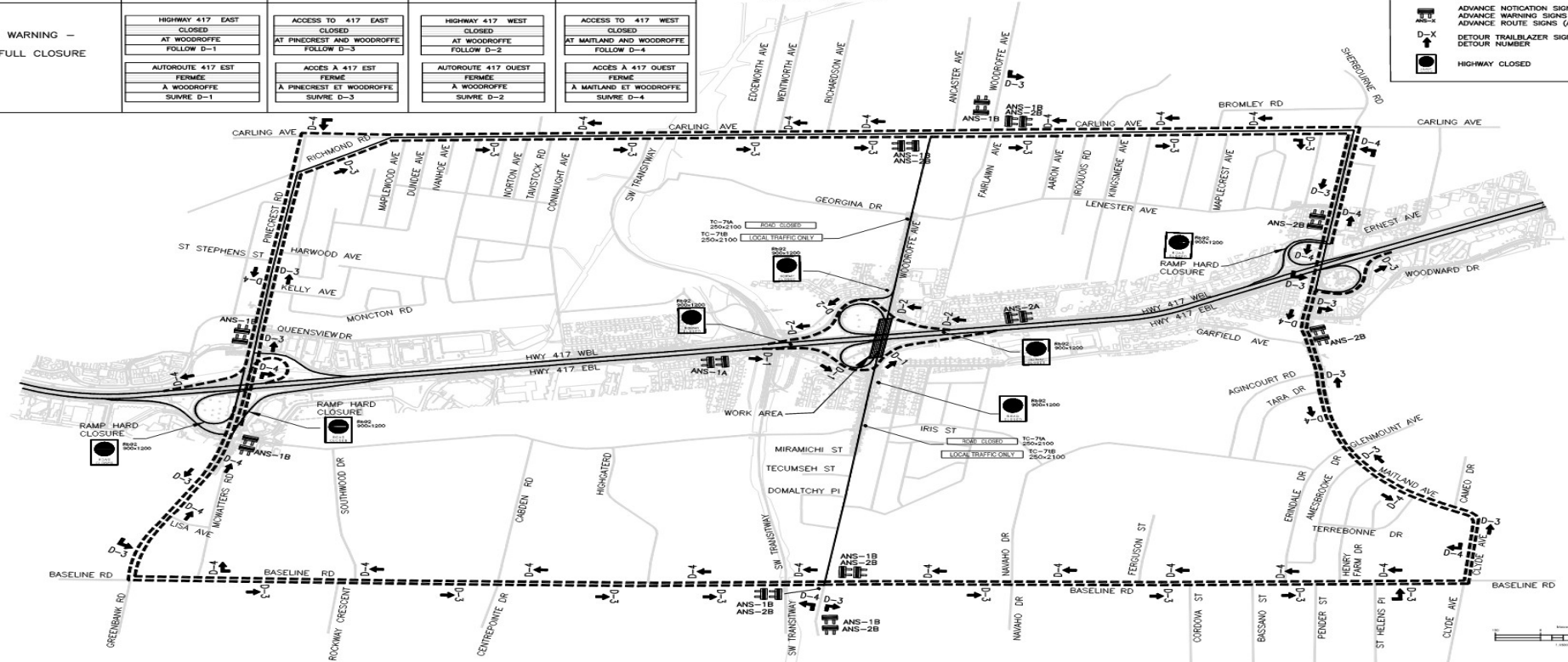


SHEET
06



LEGEND

- HWY 417 BRIDGE WORK AREA AND ROAD CLOSURE
- - - - - DETOUR ROUTE
- ANS-1, ANS-2, ANS-3, ANS-4, ANS-5, ANS-6, ANS-7, ANS-8, ANS-9, ANS-10, ANS-11, ANS-12, ANS-13, ANS-14, ANS-15, ANS-16, ANS-17, ANS-18, ANS-19, ANS-20, ANS-21, ANS-22, ANS-23, ANS-24, ANS-25, ANS-26, ANS-27, ANS-28, ANS-29, ANS-30, ANS-31, ANS-32, ANS-33, ANS-34, ANS-35, ANS-36, ANS-37, ANS-38, ANS-39, ANS-40, ANS-41, ANS-42, ANS-43, ANS-44, ANS-45, ANS-46, ANS-47, ANS-48, ANS-49, ANS-50, ANS-51, ANS-52, ANS-53, ANS-54, ANS-55, ANS-56, ANS-57, ANS-58, ANS-59, ANS-60, ANS-61, ANS-62, ANS-63, ANS-64, ANS-65, ANS-66, ANS-67, ANS-68, ANS-69, ANS-70, ANS-71, ANS-72, ANS-73, ANS-74, ANS-75, ANS-76, ANS-77, ANS-78, ANS-79, ANS-80, ANS-81, ANS-82, ANS-83, ANS-84, ANS-85, ANS-86, ANS-87, ANS-88, ANS-89, ANS-90, ANS-91, ANS-92, ANS-93, ANS-94, ANS-95, ANS-96, ANS-97, ANS-98, ANS-99, ANS-100
- ANS-1, ANS-2, ANS-3, ANS-4, ANS-5, ANS-6, ANS-7, ANS-8, ANS-9, ANS-10, ANS-11, ANS-12, ANS-13, ANS-14, ANS-15, ANS-16, ANS-17, ANS-18, ANS-19, ANS-20, ANS-21, ANS-22, ANS-23, ANS-24, ANS-25, ANS-26, ANS-27, ANS-28, ANS-29, ANS-30, ANS-31, ANS-32, ANS-33, ANS-34, ANS-35, ANS-36, ANS-37, ANS-38, ANS-39, ANS-40, ANS-41, ANS-42, ANS-43, ANS-44, ANS-45, ANS-46, ANS-47, ANS-48, ANS-49, ANS-50, ANS-51, ANS-52, ANS-53, ANS-54, ANS-55, ANS-56, ANS-57, ANS-58, ANS-59, ANS-60, ANS-61, ANS-62, ANS-63, ANS-64, ANS-65, ANS-66, ANS-67, ANS-68, ANS-69, ANS-70, ANS-71, ANS-72, ANS-73, ANS-74, ANS-75, ANS-76, ANS-77, ANS-78, ANS-79, ANS-80, ANS-81, ANS-82, ANS-83, ANS-84, ANS-85, ANS-86, ANS-87, ANS-88, ANS-89, ANS-90, ANS-91, ANS-92, ANS-93, ANS-94, ANS-95, ANS-96, ANS-97, ANS-98, ANS-99, ANS-100
- ANS-1, ANS-2, ANS-3, ANS-4, ANS-5, ANS-6, ANS-7, ANS-8, ANS-9, ANS-10, ANS-11, ANS-12, ANS-13, ANS-14, ANS-15, ANS-16, ANS-17, ANS-18, ANS-19, ANS-20, ANS-21, ANS-22, ANS-23, ANS-24, ANS-25, ANS-26, ANS-27, ANS-28, ANS-29, ANS-30, ANS-31, ANS-32, ANS-33, ANS-34, ANS-35, ANS-36, ANS-37, ANS-38, ANS-39, ANS-40, ANS-41, ANS-42, ANS-43, ANS-44, ANS-45, ANS-46, ANS-47, ANS-48, ANS-49, ANS-50, ANS-51, ANS-52, ANS-53, ANS-54, ANS-55, ANS-56, ANS-57, ANS-58, ANS-59, ANS-60, ANS-61, ANS-62, ANS-63, ANS-64, ANS-65, ANS-66, ANS-67, ANS-68, ANS-69, ANS-70, ANS-71, ANS-72, ANS-73, ANS-74, ANS-75, ANS-76, ANS-77, ANS-78, ANS-79, ANS-80, ANS-81, ANS-82, ANS-83, ANS-84, ANS-85, ANS-86, ANS-87, ANS-88, ANS-89, ANS-90, ANS-91, ANS-92, ANS-93, ANS-94, ANS-95, ANS-96, ANS-97, ANS-98, ANS-99, ANS-100
- ANS-1, ANS-2, ANS-3, ANS-4, ANS-5, ANS-6, ANS-7, ANS-8, ANS-9, ANS-10, ANS-11, ANS-12, ANS-13, ANS-14, ANS-15, ANS-16, ANS-17, ANS-18, ANS-19, ANS-20, ANS-21, ANS-22, ANS-23, ANS-24, ANS-25, ANS-26, ANS-27, ANS-28, ANS-29, ANS-30, ANS-31, ANS-32, ANS-33, ANS-34, ANS-35, ANS-36, ANS-37, ANS-38, ANS-39, ANS-40, ANS-41, ANS-42, ANS-43, ANS-44, ANS-45, ANS-46, ANS-47, ANS-48, ANS-49, ANS-50, ANS-51, ANS-52, ANS-53, ANS-54, ANS-55, ANS-56, ANS-57, ANS-58, ANS-59, ANS-60, ANS-61, ANS-62, ANS-63, ANS-64, ANS-65, ANS-66, ANS-67, ANS-68, ANS-69, ANS-70, ANS-71, ANS-72, ANS-73, ANS-74, ANS-75, ANS-76, ANS-77, ANS-78, ANS-79, ANS-80, ANS-81, ANS-82, ANS-83, ANS-84, ANS-85, ANS-86, ANS-87, ANS-88, ANS-89, ANS-90, ANS-91, ANS-92, ANS-93, ANS-94, ANS-95, ANS-96, ANS-97, ANS-98, ANS-99, ANS-100
- ANS-1, ANS-2, ANS-3, ANS-4, ANS-5, ANS-6, ANS-7, ANS-8, ANS-9, ANS-10, ANS-11, ANS-12, ANS-13, ANS-14, ANS-15, ANS-16, ANS-17, ANS-18, ANS-19, ANS-20, ANS-21, ANS-22, ANS-23, ANS-24, ANS-25, ANS-26, ANS-27, ANS-28, ANS-29, ANS-30, ANS-31, ANS-32, ANS-33, ANS-34, ANS-35, ANS-36, ANS-37, ANS-38, ANS-39, ANS-40, ANS-41, ANS-42, ANS-43, ANS-44, ANS-45, ANS-46, ANS-47, ANS-48, ANS-49, ANS-50, ANS-51, ANS-52, ANS-53, ANS-54, ANS-55, ANS-56, ANS-57, ANS-58, ANS-59, ANS-60, ANS-61, ANS-62, ANS-63, ANS-64, ANS-65, ANS-66, ANS-67, ANS-68, ANS-69, ANS-70, ANS-71, ANS-72, ANS-73, ANS-74, ANS-75, ANS-76, ANS-77, ANS-78, ANS-79, ANS-80, ANS-81, ANS-82, ANS-83, ANS-84, ANS-85, ANS-86, ANS-87, ANS-88, ANS-89, ANS-90, ANS-91, ANS-92, ANS-93, ANS-94, ANS-95, ANS-96, ANS-97, ANS-98, ANS-99, ANS-100





Rapid Replacement Detours – Woodroffe Avenue

MINISTRY OF TRANSPORTATION, ONTARIO

| | | | | |
|--|---|--|--|--|
| ADVANCE WARNING – DURING FULL CLOSURE | AWS-3A (WOODROFFE NB) | | AWS-3B (WOODROFFE SB) | |
| | WOODROFFE NORTH CLOSED AT 417 DD MMM YY – DD MMM YY FOLLOW D-5 | | WOODROFFE SOUTH CLOSED AT 417 AT PINECREST AND WOODROFFE FOLLOW D-6 | |
| | WOODROFFE NORD FERMÉ À 417 JJ MMM AA – JJ MMM AA SUIVRE D-5 | | WOODROFFE SUD FERMÉ À 417 JJ MMM AA – JJ MMM AA SUIVRE D-6 | |
| | | | | |

NOTES:

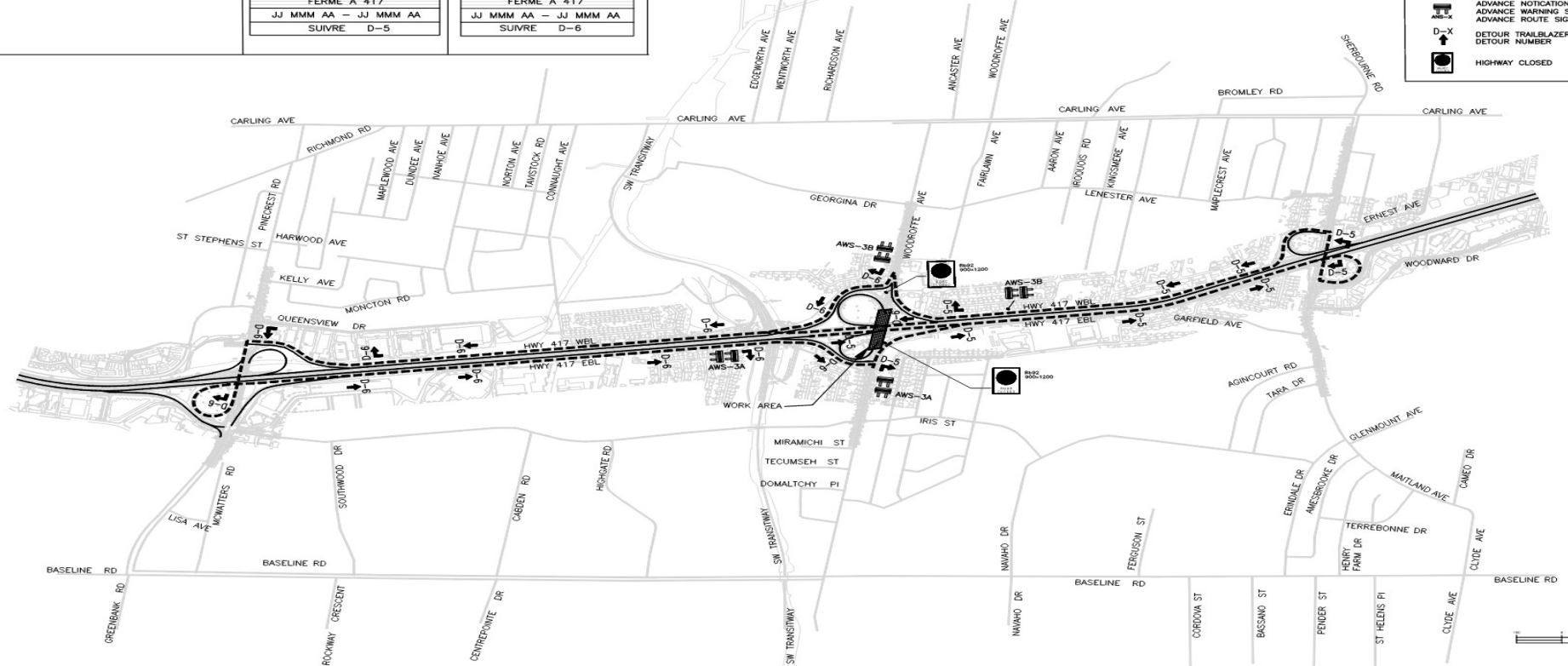
1. PLACEMENT OF TEMPORARY CONDITION SIGNAGE SHALL NOT OBSTRUCT MOTORISTS' VIEW OF EXISTING SIGNAGE.
2. MINIMUM SEPARATION BETWEEN ENGLISH AND FRENCH SIGNAGE SHALL BE 50M ON CITY STREETS AND 150m ON HIGHWAY 417.
3. ADVANCE NOTIFICATION SIGNS (ANS) TO BE INSTALLED 2 WEEKS PRIOR TO THE CLOSURE
4. ADVANCE WARNING SIGNS (AWS) AND DETOUR TRAILBLAZER SIGNS (DTS) SHALL BE INSTALLED AND REMAIN IN PLACE DURING THE CLOSURE. TABS SHALL BE USED TO CHANGE SIGNS FROM ADVANCE NOTIFICATION TO ADVANCE WARNING
5. SIGNAGE MAY REQUIRE COORDINATION WITH ADJACENT CONSTRUCTION ZONES. CONTRACTOR TO COORDINATE WITH CONTRACT ADMINISTRATOR
6. RAMP CLOSURES SHALL BE AS SPECIFIED ELSEWHERE IN THE CONTRACT DOCUMENTS.

METRIC
DIMENSIONS ARE IN METRES AND/OR
MILLIMETRES UNLESS OTHERWISE SHOWN

| | |
|---|-------------|
| Ontario Ministry of Transportation | |
| CONT WP 4124-14-00 | SHEET 07 |
| WOODROFFE FULL CLOSURE DETOUR ROUTING | |
| | |

LEGEND













| | |
|--|---|
| | HWY 417 BRIDGE WORK AREA AND ROAD CLOSURE |
| | DETOUR ROUTE |
| | ADVANCE NOTIFICATION SIGNS (ANS) |
| | ADVANCE WARNING SIGNS (AWS) |
| | DETOUR TRAILBLAZER SIGNS (DTS) WITH DETOUR NUMBER |
| | HIGHWAY CLOSED |





Rapid Replacement Detours – Woodroffe Avenue – Pedestrian / Cyclists

ADVANCE NOTIFICATION SIGN MESSAGES

| | ANS – 4A (WOODROFFE NB) | ANS – 4B (WOODROFFE SB) | | | | | | | | |
|---|--|----------------------------|--|---|---|--|--|---|---------------------------------------|---|
| ADVANCE NOTIFICATION – ONE WEEK PRIOR TO FULL CLOSURE | <table border="1"> <tr><th>CONSTRUCTION</th></tr> <tr><td>WOODROFFE TO BE CLOSED AT 417 DD MM YY – DD MM YY</td></tr> <tr><td>WOODROFFE SERA FERME À 417 JJ MMM AA – JJ MMM AA</td></tr> </table> | CONSTRUCTION | WOODROFFE TO BE CLOSED AT 417 DD MM YY – DD MM YY | WOODROFFE SERA FERME À 417 JJ MMM AA – JJ MMM AA | <table border="1"> <tr><th>CONSTRUCTION</th></tr> <tr><td>WOODROFFE TO BE CLOSED AT 417 DD MM YY – DD MM YY</td></tr> <tr><td>WOODROFFE SERA FERME À 417 JJ MMM AA – JJ MMM AA</td></tr> </table> | CONSTRUCTION | WOODROFFE TO BE CLOSED AT 417 DD MM YY – DD MM YY | WOODROFFE SERA FERME À 417 JJ MMM AA – JJ MMM AA | | |
| CONSTRUCTION | | | | | | | | | | |
| WOODROFFE TO BE CLOSED AT 417 DD MM YY – DD MM YY | | | | | | | | | | |
| WOODROFFE SERA FERME À 417 JJ MMM AA – JJ MMM AA | | | | | | | | | | |
| CONSTRUCTION | | | | | | | | | | |
| WOODROFFE TO BE CLOSED AT 417 DD MM YY – DD MM YY | | | | | | | | | | |
| WOODROFFE SERA FERME À 417 JJ MMM AA – JJ MMM AA | | | | | | | | | | |
| ADVANCE WARNING – DURING FULL CLOSURE | <table border="1"> <tr><th>CONSTRUCTION</th></tr> <tr><td>WOODROFFE CLOSED/FERME AT/A 417</td></tr> <tr><td>USE/UTILISER IRIS/TRANSITWAY/GEORGINA</td></tr> <tr><td>FOLLOW SUIVRE  </td></tr> </table> | CONSTRUCTION | WOODROFFE CLOSED/FERME AT/A 417 | USE/UTILISER IRIS/TRANSITWAY/GEORGINA | FOLLOW SUIVRE   | <table border="1"> <tr><th>CONSTRUCTION</th></tr> <tr><td>WOODROFFE CLOSED/FERME AT/A 417</td></tr> <tr><td>USE/UTILISER GEORGINA/TRANSITWAY/IRIS</td></tr> <tr><td>FOLLOW SUIVRE  </td></tr> </table> | CONSTRUCTION | WOODROFFE CLOSED/FERME AT/A 417 | USE/UTILISER GEORGINA/TRANSITWAY/IRIS | FOLLOW SUIVRE   |
| CONSTRUCTION | | | | | | | | | | |
| WOODROFFE CLOSED/FERME AT/A 417 | | | | | | | | | | |
| USE/UTILISER IRIS/TRANSITWAY/GEORGINA | | | | | | | | | | |
| FOLLOW SUIVRE   | | | | | | | | | | |
| CONSTRUCTION | | | | | | | | | | |
| WOODROFFE CLOSED/FERME AT/A 417 | | | | | | | | | | |
| USE/UTILISER GEORGINA/TRANSITWAY/IRIS | | | | | | | | | | |
| FOLLOW SUIVRE   | | | | | | | | | | |

METRIC

DIMENSIONS ARE IN METRES AND/OR MILLIMETRES UNLESS OTHERWISE SHOWN

Ontario Ministry of Transportation

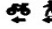

CONT –
WP 4124-14-00
WOODROFFE FULL CLOSURE
PEDESTRIAN AND CYCLIST
DETOUR ROUTING



SHEET
08

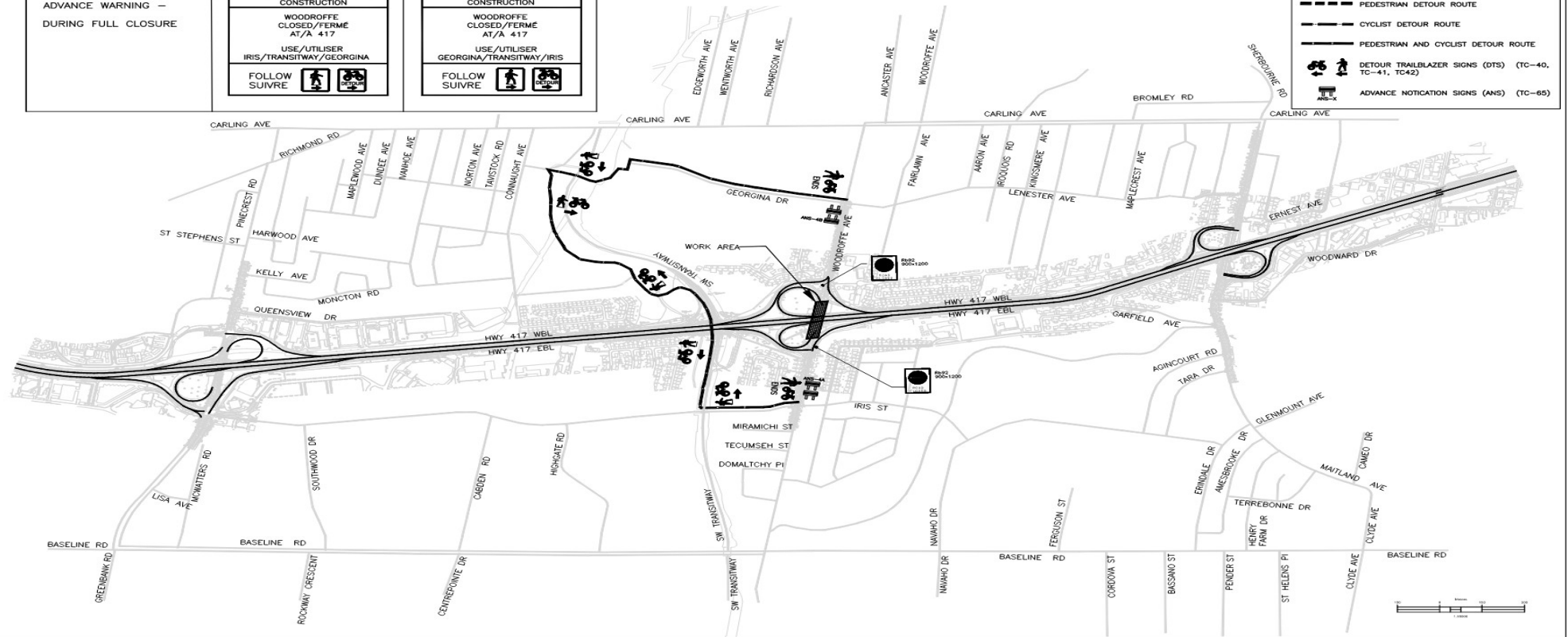


LEGEND

- HWY 417 BRIDGE WORK AREA AND ROAD CLOSURE
- - - - PEDESTRIAN DETOUR ROUTE
- - - - CYCLIST DETOUR ROUTE
- PEDESTRIAN AND CYCLIST DETOUR ROUTE
-  DETOUR TRAILBLAZER SIGNS (DTS) (TC-40, TC-41, TC42)
-  ADVANCE NOTIFICATION SIGNS (ANS) (TC-65)

NOTES:

1. PLACEMENT OF TEMPORARY CONDITION SIGNAGE SHALL NOT OBSTRUCT THE VIEW OF EXISTING SIGNAGE.
2. ADVANCE NOTIFICATION SIGNS (ANS) TO BE INSTALLED 1 WEEK PRIOR TO THE CLOSURE
3. ADVANCE WARNING SIGNS (AWS) AND DETOUR TRAILBLAZER SIGNS (DTS) SHALL BE INSTALLED AND REMAIN IN PLACE DURING THE CLOSURE. TABS SHALL BE USED TO CHANGE SIGNS FROM ADVANCE NOTIFICATION TO ADVANCE WARNING



SHEET 08 OF 14



Staging Area – Maitland Avenue





Rapid Replacement – Maitland Avenue

- 24-hour full closure of Highway 417 for bridge demolition / removal
- Maitland Avenue to be closed for period of 7 to 8 weeks for abutment and substructure construction, embankment widening and profile adjustment
- 48-72 hour full closure of Highway 417 for bridge installation
 - Highway 417 closed at Woodroffe Avenue to Maitland Avenue

Ramp closures:

- Woodroffe S-E
- Woodroffe N-E
- Maitland W-N (Long Duration)
- Carling E-W
- Maitland E-N/S
- Maitland E-N/S (1 lane – Long Duration)
- Maitland W-N/S

Rapid Replacement Detours – Highway 417 - Maitland

ADVANCE NOTIFICATION SIGN MESSAGES

| | ANS-1A (HWY 417 EB) | ANS-1B (NORTH) (HWY 417 EB ON-RAMPS) | ANS-1C (SOUTH) (HWY 417 EB ON-RAMPS) | ANS-2A (HWY 417 WB) | ANS-2B (HWY 417 WB ON-RAMPS) |
|--|---|---|---|---|---|
| ADVANCE NOTIFICATION – TWO WEEKS PRIOR TO FULL CLOSURE | HIGHWAY 417 EAST TO BE CLOSED WOODROFFE TO MATLAND DD MMM YY – DD MMM YY | ACCESS TO 417 EAST TO BE CLOSED AT WOODROFFE AND MATLAND DD MMM YY – DD MMM YY | ACCESS TO 417 EAST TO BE CLOSED AT WOODROFFE DD MMM YY – DD MMM YY | HIGHWAY 417 WEST TO BE CLOSED CARLING TO WOODROFFE DD MMM YY – DD MMM YY | ACCESS TO 417 WEST TO BE CLOSED AT CARLING AND MATLAND DD MMM YY – DD MMM YY |
| | AUTOROUTE 417 EST SERA FERME WOODROFFE A MATLAND JJ MMM AA – JJ MMM AA | ACCES A 417 EST SERA FERME A WOODROFFE ET MATLAND JJ MMM AA – JJ MMM AA | ACCES A 417 EST SERA FERME A WOODROFFE JJ MMM AA – JJ MMM AA | AUTOROUTE 417 OUEST SERA FERME CARLING A WOODROFFE JJ MMM AA – JJ MMM AA | ACCES A 417 OUEST SERA FERME A CARLING ET MATLAND JJ MMM AA – JJ MMM AA |
| ADVANCE WARNING – DURING FULL CLOSURE | HIGHWAY 417 EAST CLOSED WOODROFFE TO MATLAND FOLLOW D-1 | ACCESS TO 417 EAST CLOSED AT WOODROFFE AND MATLAND FOLLOW D-1 | ACCESS TO 417 EAST CLOSED AT WOODROFFE FOLLOW D-3 | HIGHWAY 417 WEST CLOSED CARLING TO WOODROFFE FOLLOW D-2 | ACCESS TO 417 WEST CLOSED AT CARLING AND MATLAND FOLLOW D-2 |
| | AUTOROUTE 417 EST FERME WOODROFFE A MATLAND SUIVRE D-1 | ACCES A 417 EST FERME A WOODROFFE ET MATLAND SUIVRE D-1 | ACCES A 417 EST FERME A WOODROFFE SUIVRE D-3 | AUTOROUTE 417 OUEST FERME CARLING A WOODROFFE SUIVRE D-2 | ACCES A 417 OUEST FERME A CARLING ET MATLAND SUIVRE D-2 |

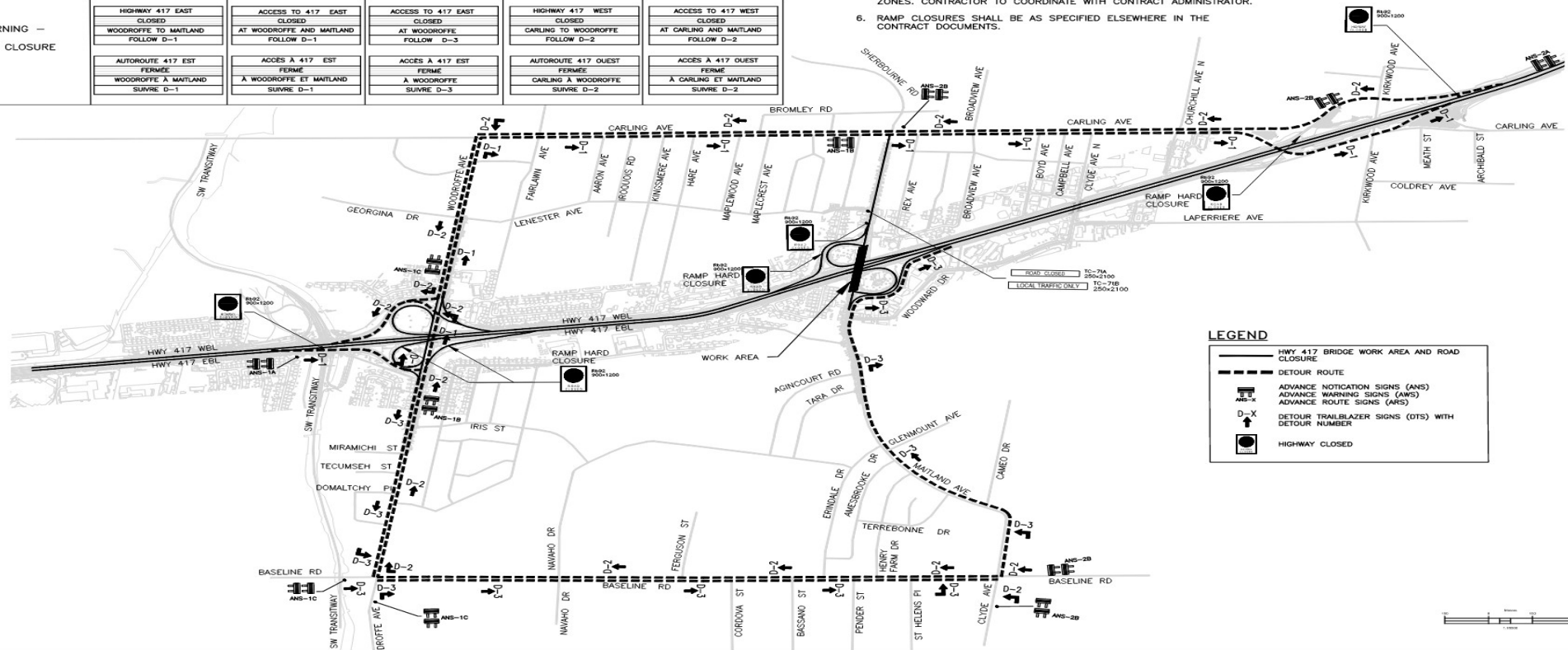
METRIC
DIMENSIONS ARE IN METRES AND/OR
MILLIMETRES UNLESS OTHERWISE SHOWN

Ontario Ministry of Transportation
 CONT –
 WP 4124-14-00
 HWY 417 FULL CLOSURE
 MAITLAND STRUCTURE
 DETOUR ROUTING

SHEET
 09

NOTES:

1. PLACEMENT OF TEMPORARY CONDITION SIGNAGE SHALL NOT OBSTRUCT MOTORISTS' VIEW OF EXISTING SIGNAGE.
2. MINIMUM SEPARATION BETWEEN ENGLISH AND FRENCH SIGNAGE SHALL BE 50M ON CITY STREETS AND 150M ON HIGHWAY 417.
3. ADVANCE NOTIFICATION SIGNS (ANS) TO BE INSTALLED 2 WEEKS PRIOR TO THE CLOSURE.
4. ADVANCE WARNING SIGNS (AWS) AND DETOUR TRAILBLAZER SIGNS (DTS) SHALL BE INSTALLED AND REMAIN IN PLACE DURING THE CLOSURE. TABS SHALL BE USED TO CHANGE SIGNS FROM ADVANCE NOTIFICATION TO ADVANCE WARNING.
5. SIGNAGE MAY REQUIRE COORDINATION WITH ADJACENT CONSTRUCTION ZONES. CONTRACTOR TO COORDINATE WITH CONTRACT ADMINISTRATOR.
6. RAMP CLOSURES SHALL BE AS SPECIFIED ELSEWHERE IN THE CONTRACT DOCUMENTS.





Rapid Replacement Detours – Maitland Avenue

MINUTE 17, TRANSITION, 1846

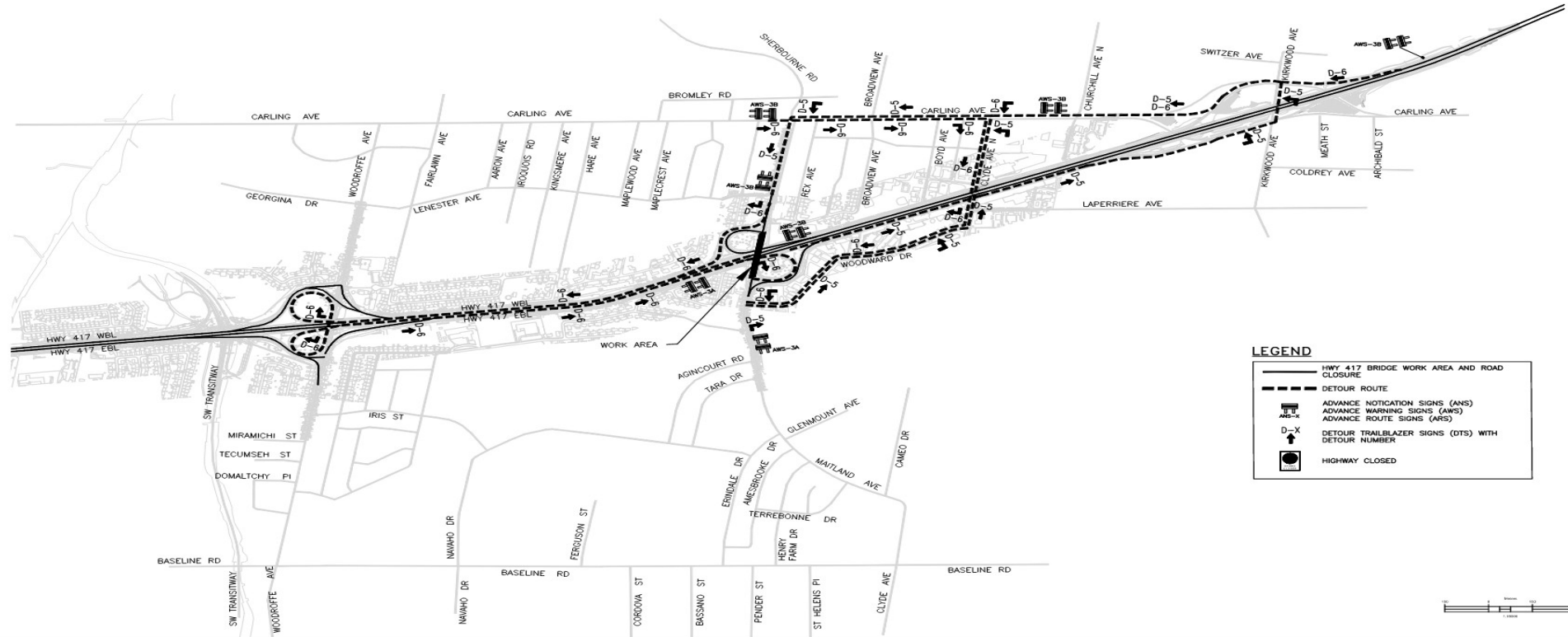
| | | |
|--|-------------------------------------|-------------------------------------|
| ADVANCE WARNING – DURING FULL CLOSURE | AWS-3A (MAITLAND NB) | AWS-3B (MAITLAND SB) |
| | MAITLAND NORTH CLOSED AT 417 | MAITLAND SOUTH CLOSED AT 417 |
| | DD MMM YY – DD MMM YY FOLLOW D-5 | DD MMM YY – DD MMM YY FOLLOW D-6 |
| | MAITLAND NORD FERME A 417 | MAITLAND SUD FERME A 417 |
| JJ MMM AA – JJ MMM AA SUIVRE D-5 | JJ MMM AA – JJ MMM AA SUIVRE D-6 | |

NOTES:

1. PLACEMENT OF TEMPORARY CONDITION SIGNAGE SHALL NOT OBSTRUCT MOTORISTS' VIEW OF EXISTING SIGNAGE.
2. MINIMUM SEPARATION BETWEEN ENGLISH AND FRENCH SIGNAGE SHALL BE 50M ON CITY STREETS AND 150M ON HIGHWAY 417.
3. ADVANCE NOTIFICATION SIGNS (ANS) TO BE INSTALLED 2 WEEKS PRIOR TO THE CLOSURE.
4. ADVANCE WARNING SIGNS (AWS) AND DETOUR TRAILBLAZER SIGNS (DTS) SHALL BE INSTALLED AND REMAIN IN PLACE DURING THE CLOSURE. TABS SHALL BE USED TO CHANGE SIGNS FROM ADVANCE NOTIFICATION TO ADVANCE WARNING.
5. SIGNAGE MAY REQUIRE COORDINATION WITH ADJACENT CONSTRUCTION ZONES. CONTRACTOR TO COORDINATE WITH CONTRACT ADMINISTRATOR.
6. RAMP CLOSURES SHALL BE AS SPECIFIED ELSEWHERE IN THE CONTRACT DOCUMENTS.

METRIC
DIMENSIONS ARE IN METRES AND/OR
MILLIMETRES UNLESS OTHERWISE SHOWN

| | |
|---|-------------|
| Ministry of Transportation | |
| CONT WP 4124-14-00 | SHEET 10 |
| MAITLAND FULL CLOSURE DETOUR ROUTING | |
| | |







Rapid Replacement Detours – Maitland Avenue – Pedestrian / Cyclists

MINISTRY OF TRANSPORTATION, ONTARIO

ADVANCE NOTIFICATION SIGN MESSAGES

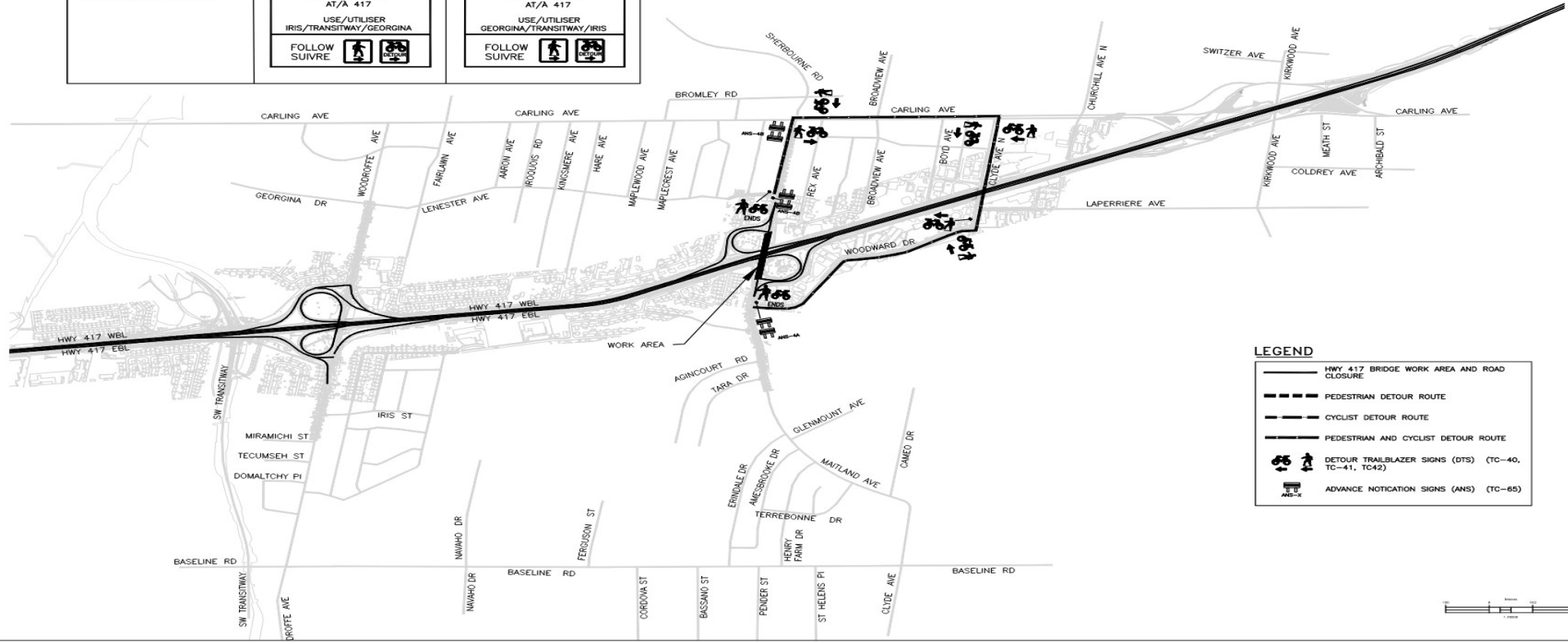
| | ANS - 4A (MAITLAND NB) | ANS - 4B (MAITLAND SB) |
|---|--|--|
| ADVANCE NOTIFICATION – ONE WEEK PRIOR TO FULL CLOSURE | <p>CONSTRUCTION</p> <p>MAITLAND</p> <p>TO BE CLOSED AT 417</p> <p>DD MM YY – DD MM YY</p> <p>MAITLAND</p> <p>SERA FERME A 417</p> <p>JJ MMM AA – JJ MMM AA</p> | <p>CONSTRUCTION</p> <p>MAITLAND</p> <p>TO BE CLOSED AT 417</p> <p>DD MM YY – DD MM YY</p> <p>MAITLAND</p> <p>SERA FERME A 417</p> <p>JJ MMM AA – JJ MMM AA</p> |
| ADVANCE WARNING – DURING FULL CLOSURE | <p>CONSTRUCTION</p> <p>MAITLAND</p> <p>CLOSED/FERME</p> <p>AT/A 417</p> <p>USE/UTILISER</p> <p>IRIS/TRANSITWAY/GEORGINA</p> <p>FOLLOW SUIVRE</p>  | <p>CONSTRUCTION</p> <p>MAITLAND</p> <p>CLOSED/FERME</p> <p>AT/A 417</p> <p>USE/UTILISER</p> <p>GEORGINA/TRANSITWAY/IRIS</p> <p>FOLLOW SUIVRE</p>  |

NOTES:

1. PLACEMENT OF TEMPORARY CONDITION SIGNAGE SHALL NOT OBSTRUCT THE VIEW OF EXISTING SIGNAGE.
2. ADVANCE NOTIFICATION SIGNS (ANS) TO BE INSTALLED 1 WEEK PRIOR TO THE CLOSURE
3. ADVANCE WARNING SIGNS (AWS) AND DETOUR TRAILBLAZER SIGNS (DTS) SHALL BE INSTALLED AND REMAIN IN PLACE DURING THE CLOSURE. TABS SHALL BE USED TO CHANGE SIGNS FROM ADVANCE NOTIFICATION TO ADVANCE WARNING

METRIC
DIMENSIONS ARE IN METRES AND/OR
MILLIMETRES UNLESS OTHERWISE SHOWN

| | |
|---|---|
| Ontario Ministry of Transportation |  |
| CONT WP 4124-14-00 | SHEET 11 |
| MAITLAND CLOSURE PEDESTRIAN AND CYCLIST DETOUR ROUTING | |
|  | |





Traffic & Incident Management Coordination

- Incident Management Team (IMT) in place for duration of Contract
 - Key players: MTO Operations Centre, City of Ottawa Traffic Control Centre, Emergency Services, Contractor and Heavy Lift Specialist
 - Extensive coordination and continuous contact between IMT key players during the rapid replacement operations
- Pre-rapid lift coordination meetings and “dry run” meeting scheduled in advance of rapid replacement weekend
- Advance notification & PVMS on Highway 417 and arterial roads to notify motorists of construction operations and closure details
- Media releases, newspaper ads, radio, and use of social media to inform the public of the full closure and ramp closures
- Traffic detours in effect during the rapid replacement weekends and sideroad closures



Questions?



Thank you