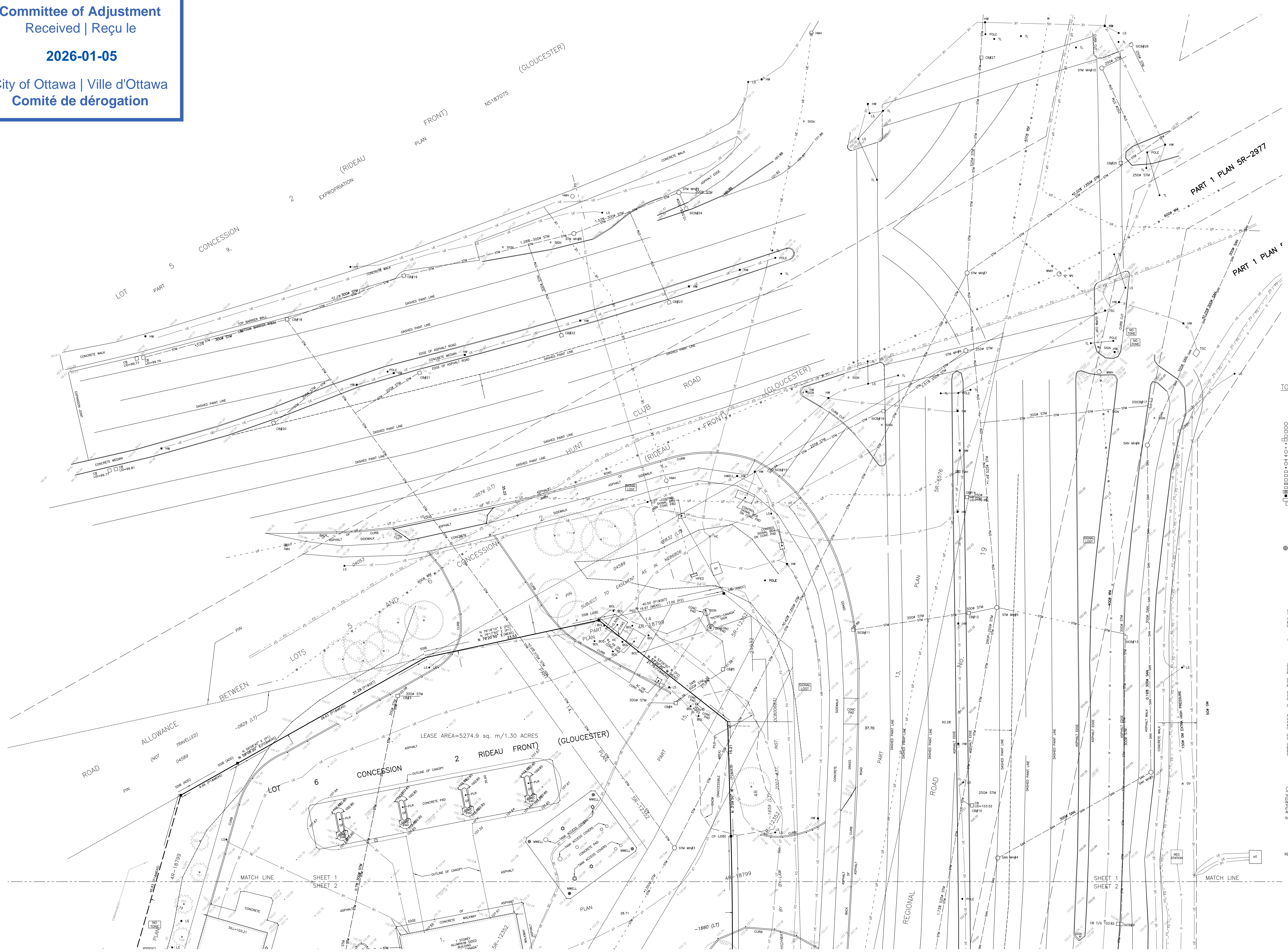
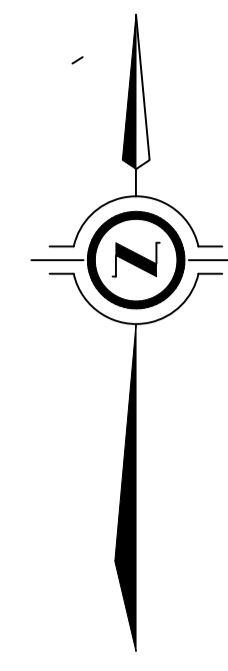


Committee of Adjustment
Received | Reçu le

2026-01-05

City of Ottawa | Ville d'Ottawa
Comité de dérogation



SEWER INVERT DATA TABLE

Feature ID	Direction	Diameter	Invert Depth	Round/Elevation	Invert Elevation	Notes
CS#1	NW	100	2.75	100.45	99.70	
CS#2	NW	100	3.00	100.30	99.55	
CS#3	NW	100	3.25	100.15	99.40	
CS#4	NW	100	3.50	100.00	99.25	
CS#5	NW	100	3.75	99.85	99.10	
CS#6	NW	100	4.00	99.70	98.95	
CS#7	NW	100	4.25	99.55	98.80	
CS#8	NW	100	4.50	99.40	98.65	
CS#9	NW	100	4.75	99.25	98.50	
CS#10	NW	100	5.00	99.10	98.35	
CS#11	NW	100	5.25	98.95	98.20	
CS#12	NW	100	5.50	98.80	98.05	
CS#13	NW	100	5.75	98.65	97.90	
CS#14	NW	100	6.00	98.50	97.75	
CS#15	NW	100	6.25	98.35	97.60	
CS#16	NW	100	6.50	98.20	97.45	
CS#17	NW	100	6.75	98.05	97.30	
CS#18	NW	100	7.00	97.90	97.15	
CS#19	NW	100	7.25	97.75	97.00	
CS#20	NW	100	7.50	97.60	96.85	
CS#21	NW	100	7.75	97.45	96.70	
CS#22	NW	100	8.00	97.30	96.55	
CS#23	NW	100	8.25	97.15	96.40	
CS#24	NW	100	8.50	97.00	96.25	
CS#25	NW	100	8.75	96.85	96.10	
CS#26	NW	100	9.00	96.70	95.95	
CS#27	NW	100	9.25	96.55	95.80	
CS#28	NW	100	9.50	96.40	95.65	
CS#29	NW	100	9.75	96.25	95.50	
CS#30	NW	100	10.00	96.10	95.35	
CS#31	NW	100	10.25	95.95	95.20	
CS#32	NW	100	10.50	95.80	95.05	
CS#33	NW	100	10.75	95.65	94.90	
CS#34	NW	100	11.00	95.50	94.75	
CS#35	NW	100	11.25	95.35	94.60	
CS#36	NW	100	11.50	95.20	94.45	
CS#37	NW	100	11.75	95.05	94.30	
CS#38	NW	100	12.00	94.90	94.15	
CS#39	NW	100	12.25	94.75	94.00	
CS#40	NW	100	12.50	94.60	93.85	
CS#41	NW	100	12.75	94.45	93.70	
CS#42	NW	100	13.00	94.30	93.55	
CS#43	NW	100	13.25	94.15	93.40	
CS#44	NW	100	13.50	94.00	93.25	
CS#45	NW	100	13.75	93.85	93.10	
CS#46	NW	100	14.00	93.70	92.95	
CS#47	NW	100	14.25	93.55	92.80	
CS#48	NW	100	14.50	93.40	92.65	
CS#49	NW	100	14.75	93.25	92.50	
CS#50	NW	100	15.00	93.10	92.35	
CS#51	NW	100	15.25	92.95	92.20	
CS#52	NW	100	15.50	92.80	92.05	
CS#53	NW	100	15.75	92.65	91.90	
CS#54	NW	100	16.00	92.50	91.75	
CS#55	NW	100	16.25	92.35	91.60	
CS#56	NW	100	16.50	92.20	91.45	
CS#57	NW	100	16.75	92.05	91.30	
CS#58	NW	100	17.00	91.90	91.15	
CS#59	NW	100	17.25	91.75	91.00	
CS#60	NW	100	17.50	91.60	90.85	
CS#61	NW	100	17.75	91.45	90.70	
CS#62	NW	100	18.00	91.30	90.55	
CS#63	NW	100	18.25	91.15	90.40	
CS#64	NW	100	18.50	91.00	90.25	
CS#65	NW	100	18.75	90.85	90.10	
CS#66	NW	100	19.00	90.70	89.95	
CS#67	NW	100	19.25	90.55	89.80	
CS#68	NW	100	19.50	90.40	89.65	
CS#69	NW	100	19.75	90.25	89.50	
CS#70	NW	100	20.00	90.10	89.35	
CS#71	NW	100	20.25	89.95	89.20	
CS#72	NW	100	20.50	89.80	89.05	
CS#73	NW	100	20.75	89.65	88.90	
CS#74	NW	100	21.00	89.50	88.75	
CS#75	NW	100	21.25	89.35	88.60	
CS#76	NW	100	21.50	89.20	88.45	
CS#77	NW	100	21.75	89.05	88.30	
CS#78	NW	100	22.00	88.90	88.15	
CS#79	NW	100	22.25	88.75	88.00	
CS#80	NW	100	22.50	88.60	87.85	
CS#81	NW	100	22.75	88.45	87.70	
CS#82	NW	100	23.00	88.30	87.55	
CS#83	NW	100	23.25	88.15	87.40	
CS#84	NW	100	23.50	88.00	87.25	
CS#85	NW	100	23.75	87.85	87.10	
CS#86	NW	100	24.00	87.70	86.95	
CS#87	NW	100	24.25	87.55	86.80	
CS#88	NW	100	24.50	87.40	86.65	
CS#89	NW	100	24.75	87.25	86.50	
CS#90	NW	100	25.00	87.10	86.35	
CS#91	NW	100	25.25	86.95	86.20	
CS#92	NW	100	25.50	86.80	86.05	
CS#93	NW	100	25.75	86.65	85.90	
CS#94	NW	100	26.00	86.50	85.75	
CS#95	NW	100	26.25	86.35	85.60	
CS#96	NW	100	26.50	86.20	85.45	
CS#97	NW	100	26.75	86.05	85.30	
CS#98	NW	100	27.00	85.90	85.15	
CS#99	NW	100	27.25	85.75	85.00	
CS#100	NW	100	27.50	85.60	84.85	
CS#101	NW	100	27.75	85.45	84.70	
CS#102	NW	100	28.00	85.30	84.55	
CS#103	NW	100	28.25	85.15	84.40	
CS#104	NW	100	28.50	85.00	84.25	
CS#105	NW	100	28.75	84.85	84.10	
CS#106	NW	100	29.00	84.70	83.95	
CS#107	NW	100	29.25	84.55	83.80	
CS#108	NW	100	29.50	84.40	83.65	
CS#109	NW	100	29.75	84.25	83.50	
CS#110	NW	100	30.00	84.10	83.35	
CS#111	NW	100	30.25	83.95	83.20	
CS#112	NW	100	30.50	83.80	83.05	
CS#113	NW	100	30.75	83.65	82.90	
CS#114	NW	100	31.00	83.50	82.75	
CS#115	NW	100	31.25	83.35	82.60	
CS#116	NW	100	31.50	83.20	82.45	
CS#117	NW	100	31.75	83.05	82.30	
CS#118	NW	100	32.00	82.90	82.15	
CS#119	NW	100	32.25	82.75	82.00	
CS#120	NW	100	32.50	82.60	81.85	
CS#121	NW	100	32.75	82.45	81.70	
CS#122	NW	100	33.00	82.30	81.55	
CS#123	NW	100	33.25	82.15	81.40	
CS#124	NW	100	33.50	82.00	81.25	
CS#125	NW	100	33.75	81.85	81.10	
CS#126	NW	100	34.00	81.70	80.95	

TREE SCHEDULE

TREE No.	TRUNK DIAMETER (CM)	CROWN SPREAD (M)	DISTANCE FROM TRUNK TO PROPERTY LINE (M)	TREE No.	TRUNK DIAMETER (CM)	CROWN SPREAD (M)	DISTANCE FROM TRUNK TO PROPERTY LINE (M)
T1	0.25	2.5	2.5	T7	0.25	2.5	2.5
T2	0.25	2.5	3.7	T8	0.2	2.5	-
T3	0.25	2.5	3.5	T9	0.2	2.5	-
T4	0.25	2.5	5.7	T10	0.2	2.5	-
T5	0.25	2.5	3.9	T11	0.1	1.5	-
T6	0.3	2.5	4.9	T12	0.15	1.5	3.1 S
T7	0.25	2.5	0.6	T13	0.15	1.5	2.9 S
T8	0.25	2.5	4.0	T14	0.15	1.5	4.4 S
T9	0.25	2.5	-	T15	0.15	1.5	2.3 S
T10	0.25	2.5	-	T16	0.1	1.5	2.5 S
T11	0.25	2.5	-	T17	0.15	2	-
T12	0.25	2.5	-	T18	0.2	1.5	7.0 W
T13	0.25	2.5	2.9	T19	0.2	1.5	-
T14	0.2	2.5	1.6	T20	0.2	1.5	-
T15	0.15	1.5	6.6	T21	0.2	1.5	-
T16	0.15	1.5	8.1	T22	0.2	1.5	-
T17	0.15	1.5	8.4	T23	0.1	1	4.2 E
T18	0.15	1.5	6.6	T24	0.15	1	5.3 E
T19	0.15	1.5	8.3	T25	0.2	1.5	4.4 E
T20	0.2	2.5	9.7	T26	0.2	1.5	5.2 E
T21	0.2	2.5	8.1	T27	0.15	1	5.4 E
T22	0.1	1	4.2	T28	0.15	1	4.2 E
T23	0.1	1	4.2	T29	0.15	1	5.3 E
T24	0.2	2.5	-	T30	0.15	1	4.4 E
T25	0.2	2.5	-	T31	0.15	1	5.2 E
T26	0.2	2.5	-	T32	0.15	1	4.1 E

TRUNK DIAMETER MEASURED AT 1.3 METRES ABOVE GROUND.
TREE POSITION IS CALCULATED OFFSET TO ESTIMATED CENTER OF TREE.

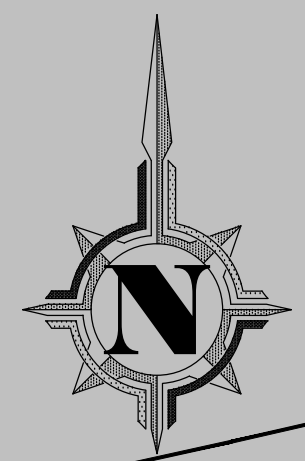
PLAN OF SURVEY WITH TOPOGRAPHIC DETAILS OF
PART OF LOT 6 CONCESSION 2 (RIDEAU FRONT)
GEOGRAPHIC TOWNSHIP OF GLOUCESTER
CITY OF OTTAWA
J.D. BARNES LIMITED
© COPYRIGHT 2024
SCALE 1 : 150
2.5 5 7.5 10 metres

LEGEND
STANDARD IRON BAR
SURVEY MONUMENT FOUND
SURVEY MONUMENT SET
SHORT STANDARD IRON BAR
CONCRETE FIN
MEASUREMENT POINT
PLAN 48-2153
PLAN 48-2153
ANN'S O'SULLIVAN, VOLLEBEK LTD.
RECORDS MANAGERIAL OF OTTAWA-CARLETON
LIMIT OF LEASE (INST. OC33605)
N-NORTH / S-SOUTH / E-EAST / W-WEST

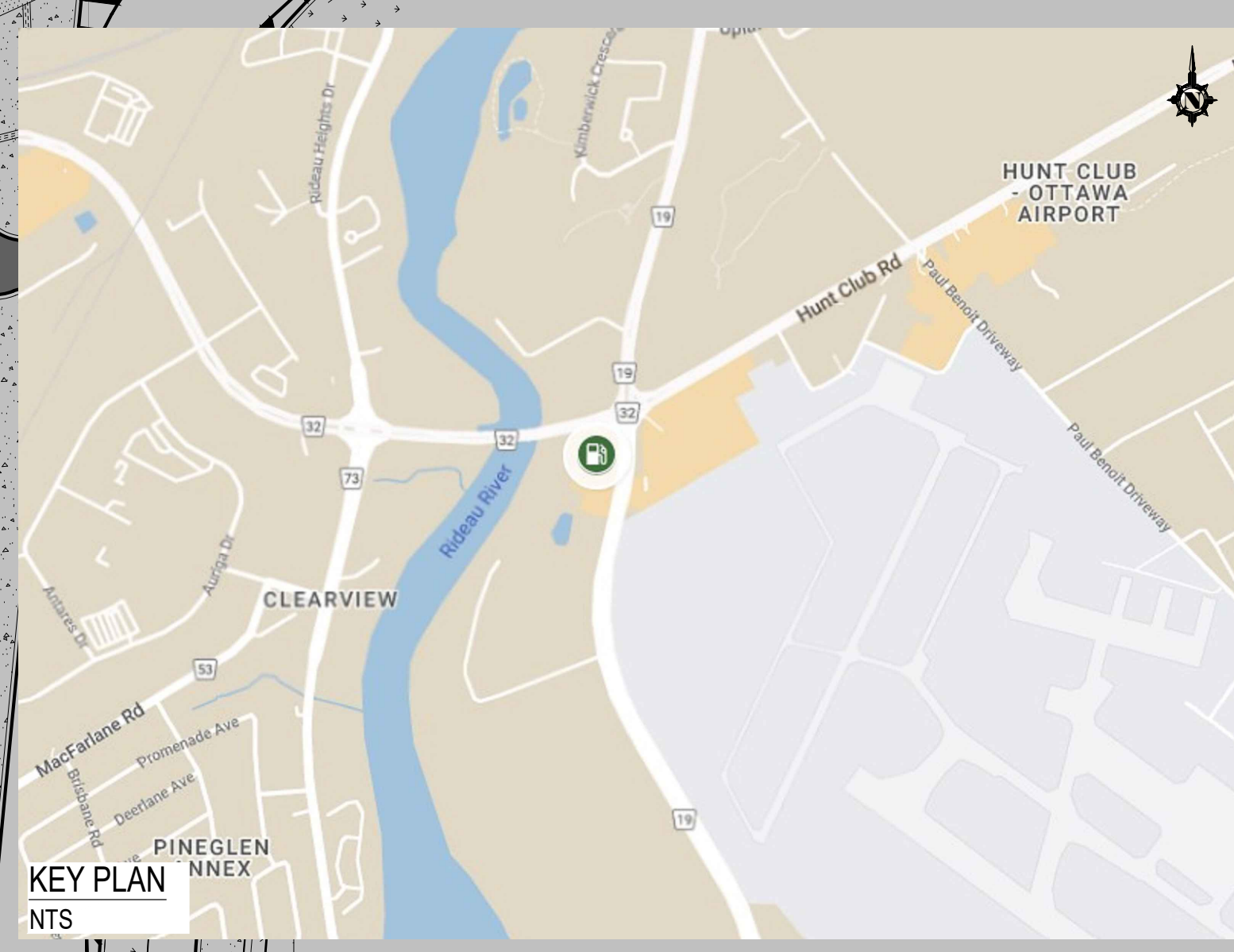
ELEVATION NOTE:
1. IT IS THE RESPONSIBILITY OF THE USER OF THIS INFORMATION TO VERIFY THAT THE SITE BENCHMARKS HAVE NOT BEEN ALTERED OR DESTROYED AND THAT THE RELATIVE ELEVATION AND DESCRIPTION AGREES WITH THE INFORMATION SHOWN ON THIS DRAWING.
2. ELEVATIONS ARE GEODETIC AND ARE REFERRED TO CITY OF OTTAWA CONTROL POINT 2018-0228 HAVING A PUBLISHED ELEVATION OF 82.47 METERS (COV2878).

TOPOGRAPHIC LEGEND
UNDERGROUND SANITARY SEWER
UNDERGROUND WATER LINE
UNDERGROUND HYDRO LINE
UNDERGROUND TELEPHONE LINE
STORM MANHOLE
CATCHBASIN
SIDE INLET CATCHBASIN
DOUBLE SIDE INLET CATCHBASIN
WATER VALVE
WATER VALVE
HYDRO MANHOLE
HYDRO PEDESTAL
HYDRO TRANSFORMER
TELEPHONE PEDestal
TELEPHONE LEVEL BOX
TELEPHONE MANHOLE
TRAFFIC CONTROL BOX
CONCRETE
HYDRO TRANSFORMER
AIR COMPRESSOR
AIR COMPRESSOR
GAS PUMP
HYDRO PUMP
LIGHT STANDARD
MONITORING WELL
DECIDUOUS TREE
CONIFEROUS TREE

UNDERGROUND UTILITY NOTES
THE UTILITY DATA DEPICTED ON THIS DRAWING WERE ACQUIRED IN ACCORDANCE WITH THE UTILITY INFORMATION IS SHOWN BY ATTRIBUTED QUALITY LEVELS WHICH ARE DEFINED AS FOLLOWS:
DATA QUALITY LEVEL
HIGHEST QUALITY
QUALITY LEVEL 1 - INFORMATION OBTAINED BY SURVEYING AND PLOTTING COORDINATE DATA FROM THE SUBSURFACE TO THE SURFACE BY THE EXPOSURE OF THE UTILITY.
QUALITY LEVEL 2 - INFORMATION OBTAINED USING GEOPHYSICAL LOCATE METHODS TO DETERMINE THE APPROXIMATE HORIZONTAL POSITION OF THE DESIGNATED UTILITY.
QUALITY LEVEL 3 - INFORMATION OBTAINED BY SURVEYING AND PLOTTING COORDINATE DATA FROM THE SUBSURFACE TO THE SURFACE BY THE EXPOSURE OF THE UTILITY.
QUALITY LEVEL 4 - INFORMATION OBTAINED BY SURVEYING AND PLOTTING COORDINATE DATA FROM THE SUBSURFACE TO THE SURFACE BY THE EXPOSURE OF THE UTILITY.
QUALITY LEVEL 5 - INFORMATION OBTAINED BY SURVEYING AND PLOTTING COORDINATE DATA FROM THE SUBSURFACE TO THE SURFACE BY THE EXPOSURE OF THE UTILITY.
QUALITY LEVEL 6 - INFORMATION OBTAINED BY SURVEYING AND PLOTTING COORDINATE DATA FROM THE SUBSURFACE TO THE SURFACE BY THE EXPOSURE OF THE UTILITY.
QUALITY LEVEL 7 - INFORMATION OBTAINED BY SURVEYING AND PLOTTING COORDINATE DATA FROM THE SUBSURFACE TO THE SURFACE BY THE EXPOSURE OF THE UTILITY.
QUALITY LEVEL 8 - INFORMATION OBTAINED BY SURVEYING AND PLOTTING COORDINATE DATA FROM THE SUBSURFACE TO THE SURFACE BY THE EXPOSURE OF THE UTILITY.
QUALITY LEVEL 9 - INFORMATION OBTAINED BY SURVEYING AND PLOTTING COORDINATE DATA FROM THE SUBSURFACE TO THE SURFACE BY THE EXPOSURE OF THE UTILITY.
QUALITY LEVEL 10 - INFORMATION OBTAINED BY SURVEYING AND PLOTTING COORDINATE DATA FROM THE SUBSURFACE TO THE SURFACE BY THE EXPOSURE OF THE UTILITY.
QUALITY LEVEL 11 - INFORMATION OBTAINED BY SURVEYING AND PLOTTING COORDINATE DATA FROM THE SUBSURFACE TO THE SURFACE BY THE EXPOSURE OF THE UTILITY.
QUALITY LEVEL 12 - INFORMATION OBTAINED BY SURVEYING AND PLOTTING COORDINATE DATA FROM THE SUBSURFACE TO THE SURFACE BY THE EXPOSURE OF THE UTILITY.
QUALITY LEVEL 13 - INFORMATION OBTAINED BY SURVEYING AND PLOTTING COORDINATE DATA FROM THE SUBSURFACE TO THE SURFACE BY THE EXPOSURE OF THE UTILITY.
QUALITY LEVEL 14 - INFORMATION OBTAINED BY SURVEYING AND PLOTTING COORDINATE DATA FROM THE SUBSURFACE TO THE SURFACE BY THE EXPOSURE OF THE UTILITY.
QUALITY LEVEL 15 - INFORMATION OBTAINED BY SURVEYING AND PLOTTING COORDINATE DATA FROM THE SUBSURFACE TO THE SURFACE BY THE EXPOSURE OF THE UTILITY.
QUALITY LEVEL 16 - INFORMATION OBTAINED BY SURVEYING AND PLOTTING COORDINATE DATA FROM THE SUBSURFACE TO THE SURFACE BY THE EXPOSURE OF THE UTILITY.
QUALITY LEVEL 17 - INFORMATION OBTAINED BY SURVEYING AND PLOTTING COORDINATE DATA FROM THE SUBSURFACE TO THE SURFACE BY THE EXPOSURE OF THE UTILITY.
QUALITY LEVEL 18 - INFORMATION OBTAINED BY SURVEYING AND PLOTTING COORDINATE DATA FROM THE SUBSURFACE TO THE SURFACE BY THE EXPOSURE OF THE UTILITY.
QUALITY LEVEL 19 - INFORMATION OBTAINED BY SURVEYING AND PLOTTING COORDINATE DATA FROM THE SUBSURFACE TO THE SURFACE BY THE EXPOSURE OF THE UTILITY.
QUALITY LEVEL 20 - INFORMATION OBTAINED BY SURVEYING AND PLOTTING COORDINATE DATA FROM THE SUBSURFACE TO THE SURFACE BY THE EXPOSURE OF THE UTILITY.
QUALITY LEVEL 21 - INFORMATION OBTAINED BY SURVEYING AND PLOTTING COORDINATE DATA FROM THE SUBSURFACE TO THE SURFACE BY THE EXPOSURE OF THE UTILITY.
QUALITY LEVEL 22 - INFORMATION OBTAINED BY SURVEYING AND PLOTTING COORDINATE DATA FROM THE SUBSURFACE TO THE SURFACE BY THE EXPOSURE OF THE UTILITY.
QUALITY LEVEL 23 - INFORMATION OBTAINED BY SURVEYING AND PLOTTING COORDINATE DATA FROM THE SUBSURFACE TO THE SURFACE BY THE EXPOSURE OF THE UTILITY.
QUALITY LEVEL 24 - INFORMATION OBTAINED BY SURVEYING AND PLOTTING COORDINATE DATA FROM THE SUBSURFACE TO THE SURFACE BY THE EXPOSURE OF THE UTILITY.
QUALITY LEVEL 25 - INFORMATION OBTAINED BY SURVEYING AND PLOTTING COORDINATE DATA FROM THE SUBSURFACE TO THE SURFACE BY THE EXPOSURE OF THE UTILITY.
QUALITY LEVEL 26 - INFORMATION OBTAINED BY SURVEYING AND PLOTTING COORDINATE DATA FROM THE SUBSURFACE TO THE SURFACE BY THE EXPOSURE OF THE UTILITY.
QUALITY LEVEL 27 - INFORMATION OBTAINED BY SURVEYING AND PLOTTING COORDINATE DATA FROM THE SUBSURFACE TO THE SURFACE BY THE EXPOSURE OF THE UTILITY.
QUALITY LEVEL 28 - INFORMATION OBTAINED BY SURVEYING AND PLOTTING COORDINATE DATA FROM THE SUBSURFACE TO THE SURFACE BY THE EXPOSURE OF THE UTILITY.
QUALITY LEVEL 29 - INFORMATION OBTAINED BY SURVEYING AND PLOTTING COORDINATE DATA FROM THE SUBSURFACE TO THE SURFACE BY THE EXPOSURE OF THE UTILITY.
QUALITY LEVEL 30 - INFORMATION OBTAINED BY SURVEYING AND PLOTTING COORDINATE DATA FROM THE SUBSURFACE TO THE SURFACE BY THE EXPOSURE OF THE UTILITY.
QUALITY LEVEL 31 - INFORMATION OBTAINED BY SURVEYING AND PLOTTING COORDINATE DATA FROM THE SUBSURFACE TO THE SURFACE BY THE EXPOSURE OF THE UTILITY.
QUALITY LEVEL 32 - INFORMATION OBTAINED BY SURVEYING AND PLOTTING COORDINATE DATA FROM THE SUBSURFACE TO THE SURFACE BY THE EXPOSURE OF THE UTILITY.
QUALITY LEVEL 33 - INFORMATION OBTAINED BY SURVEYING AND PLOTTING COORDINATE DATA FROM THE SUBSURFACE TO THE SURFACE BY THE EXPOSURE OF THE UTILITY.
QUALITY LEVEL 34 - INFORMATION OBTAINED BY SURVEYING AND PLOTTING COORDINATE DATA FROM THE SUBSURFACE TO THE SURFACE BY THE EXPOSURE OF THE UTILITY.
QUALITY LEVEL 35 - INFORMATION OBTAINED BY SURVEYING AND PL



Committee of Adjustment
 Received | Reçu le
2026-01-05
 City of Ottawa | Ville d'Ottawa
 Comité de dérogation



SITE INFORMATION				
ADDRESS: 4000 RIVERSIDE DRIVE, OTTAWA, ONTARIO				
ZONE: LIGHT INDUSTRIAL (IL)				
	PROPOSED AREA: SQ.M.	EXISTING AREA: SQ.M.	AREA: ACRES	% OF TOTAL LOT AREA
TOTAL LOT AREA	5,274.2 M ²	5,274.2 M ²	1.3	100%
TOTAL BUILDING AREA	282.6 M ²	282.6 M ²		5.4%
LANDSCAPED AREA	1,437.2 M ²	1,373.4 M ²		27.2%
ASPHALT PAVED AREA	2,814.4 M ²	3,118.8 M ²		53.4%
CONCRETE PAVED AREA	737.8 M ²	499.4 M ²		14%

	PROPOSED	EXISTING	% OF TOTAL
TOTAL BUILDING AREA (GROSS)	148.7 M ²	148.7 M ²	100%
C-STORE GFA	94.3 M ²	148.7 M ²	63.4%
A&W GFA	54.4 M ²	NA	36.6%
CAR WASH (NET)	133.9 M ²	133.9 M ²	
CANOPY COVERAGE	307.1 M ²	307.1 M ²	5.8%

	PROPOSED	EXISTING
BUILDING HEIGHT - CANOPY:	5.50 M	5.50 M
BUILDING HEIGHT - STORE:	4.39 M	4.39 M
BUILDING HEIGHT - CAR WASH:	4.63 M	4.63 M

	MINIMUM REQUIRED	PARKING		
		REQUIRED	EXISTING	PROPOSED
CAR WASH	NONE	0	0	2 PARKING/VACUUM (+ 11 CARS STACKING)
C-STORE	CONVENIENCE STORE: 3.4 PARKING SPACES FOR EACH 100 M ² OF GFA (94.3/100) 3.4 = 3.2 = ROUNDED DOWN TO 3	3	12	6 PARKING INCLUDING 1- HANDICAP
A&W	FAST FOOD: 10 PARKING SPACES FOR EACH 100 M ² OF GFA (54.4/100) 10 = 5.4 = ROUNDED DOWN TO 5	5	NA	6 PARKING (+ 9 CARS STACKING)
TOTAL:		8	12	14
LOADING SPACE PROVIDED				
C-STORE & A&W	5.5M x 12M	1	1	1

ISSUED		
NO.	DATE	DESCRIPTION
1	2025/12/16	ISSUED FOR SITE PLAN APPROVAL

REVISION		
2025-04-16	RECONFIGURED CAR WASH & DRIVE-THRU STACKING LANES	
2025-05-05	A&W COMMENTS	
2025-05-23	ADDED MUNICIPAL ROAD SIGNS AND MARKINGS	
2025-08-26	BA COMMENTS	
2025-09-26	YARD LIGHTS AT CARWASH ENTRANCE STACKING TO REFLECT EXISTING	
2025-11-17	REVISED D-T STACKING PER TRAFFIC CONSULTANT COMMENTS	
2025-12-05	UPDATED YARD LIGHTS AS PER PHOTOMETRICS	
2025-12-16	UPDATED LANDSCAPE & SNOW STORAGE	



The contractor will check and verify dimensions and report errors and omissions to the designer and the design professional whose seal is affixed to this drawing. Do not scale the drawings.

This drawing will not be used for construction purposes until issued for construction by the design professional whose seal is affixed to this drawing and whose signature is below.

ISSUED FOR CONSTRUCTION _____ DATE _____
 DIMENSIONS AND CONDITIONS TO BE VERIFIED ON THE PREMISES

K PAUL ARCHITECT INC.
 TORONTO-VANCOUVER-CALGARY-ORLANDO
 2880 SHELDON HEIGHTS DRIVE, SUITE #200, CHARLTON, ON L4L 1Y8



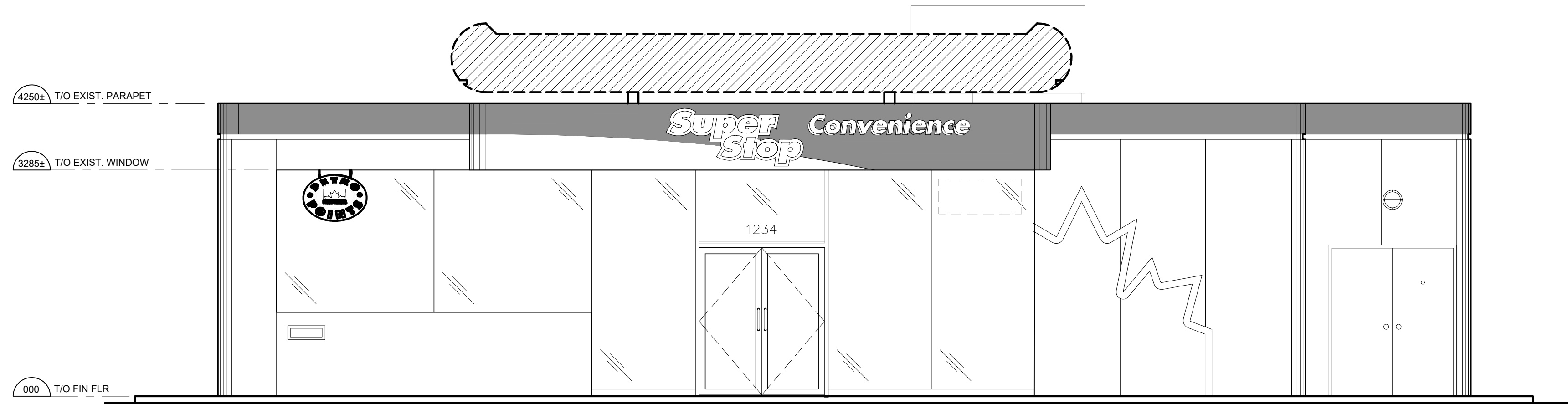
DRAWING TITLE
PROPOSED SITE LAYOUT

PROJECT
RIVERSIDE DRIVE @ HUNT CLUB DRIVE
 OTTAWA, ON

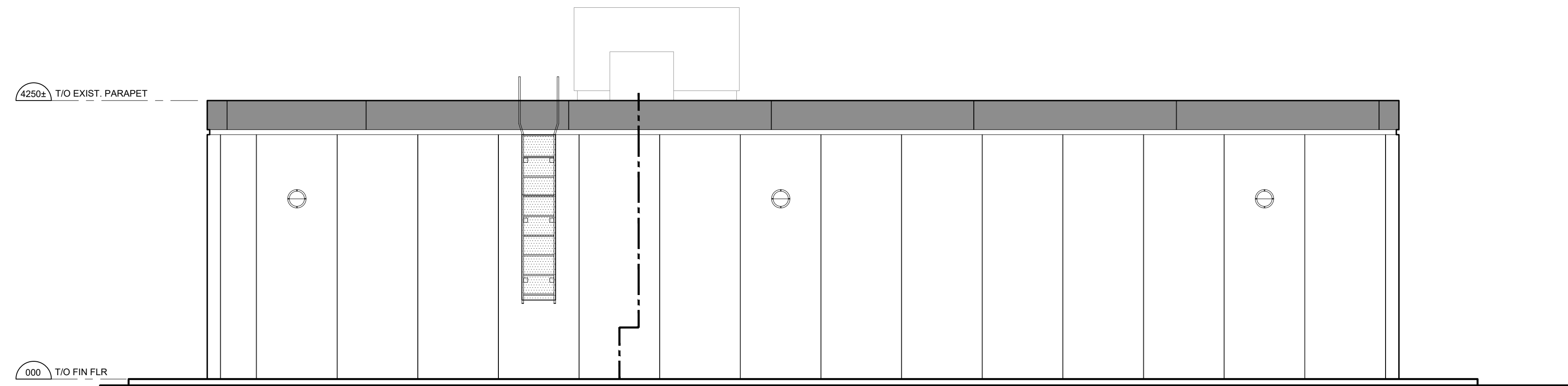
DRAWN	CHECKED
F.E.	
SCALE	DATE
1:250	2025-12-05
PROJECT NO.	DRAWING NO.
35197	SP1

35197 - SP1 - 2025-12-16.dwg 15:01:16 12/16/2025

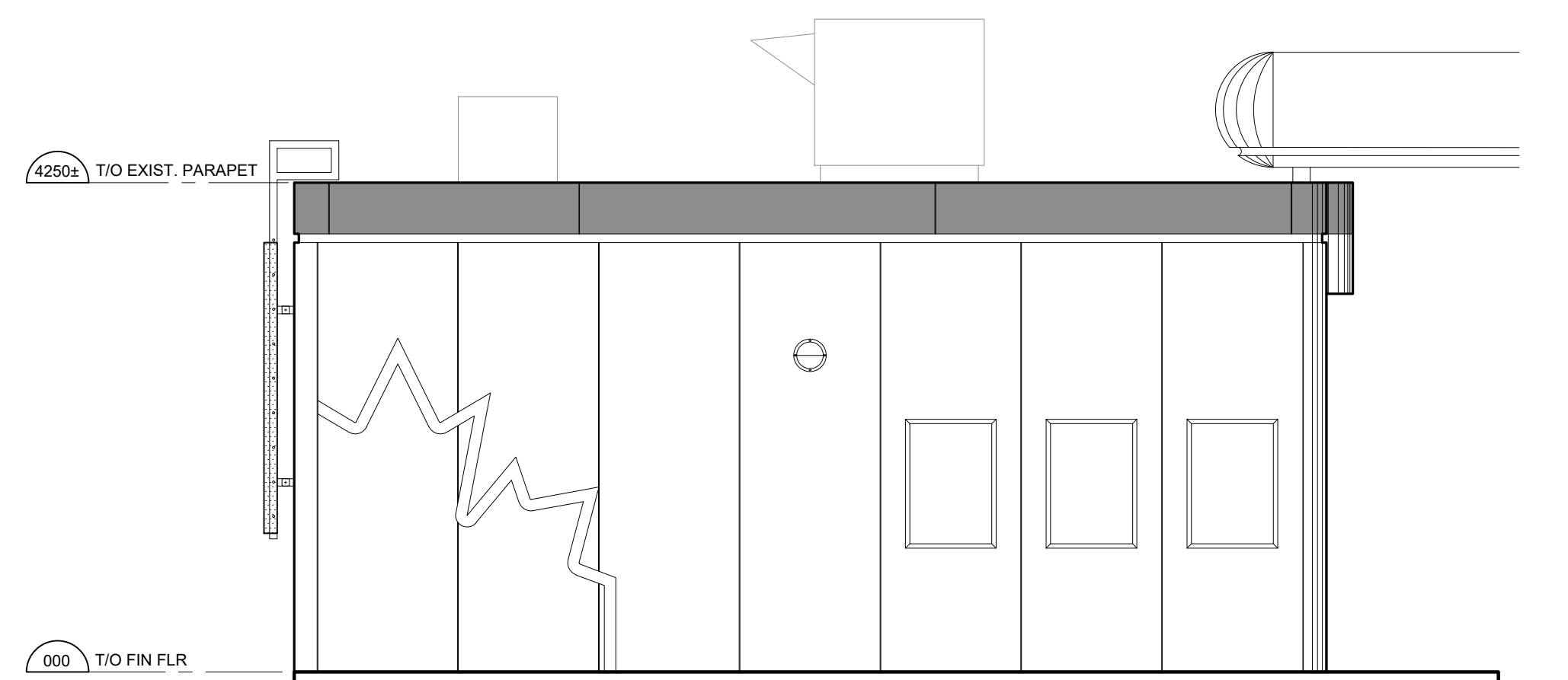
Committee of Adjustment
 Received | Reçu le
2026-01-05
 City of Ottawa | Ville d'Ottawa
 Comité de dérogation



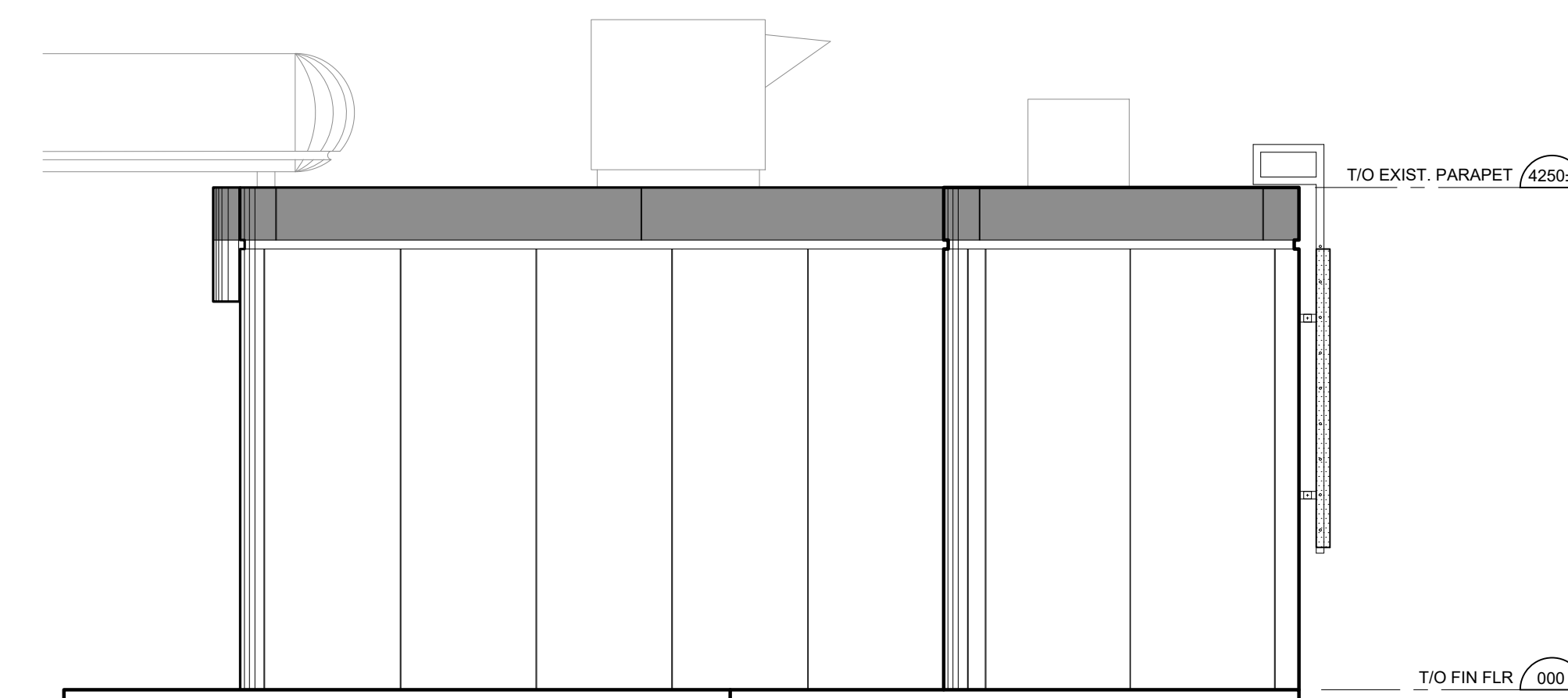
1 NORTH ELEVATION (EXISTING)



2 SOUTH ELEVATION (EXISTING)



3 EAST ELEVATION (EXISTING)



4 WEST ELEVATION (EXISTING)

REVISION TABLE		
REV.	DESCRIPTION	DRAWN / APP'D. DATE

ISSUE TABLE		
TO	FOR	DATE
CITY	ISSUED FOR SITE PLAN APPROVAL	2025/12/16

METRIC
 ALL DIMENSIONS ARE IN MILLIMETRES U.N.O. CONTRACTOR TO CHECK/VERIFY ALL DIMENSIONS PRIOR TO COMMENCEMENT OF WORK. ALL DISCREPANCIES TO BE REPORTED TO THE PROJECT DESIGNER. DO NOT SCALE DRAWINGS.



CONSULTANT:
K PAUL ARCHITECT INC.
 TORONTO-VANCOUVER-CALGARY-ORLANDO
 2660 SHERWOOD HEIGHTS DRIVE, SUITE #200, OMAHA, ON L6J 7T8



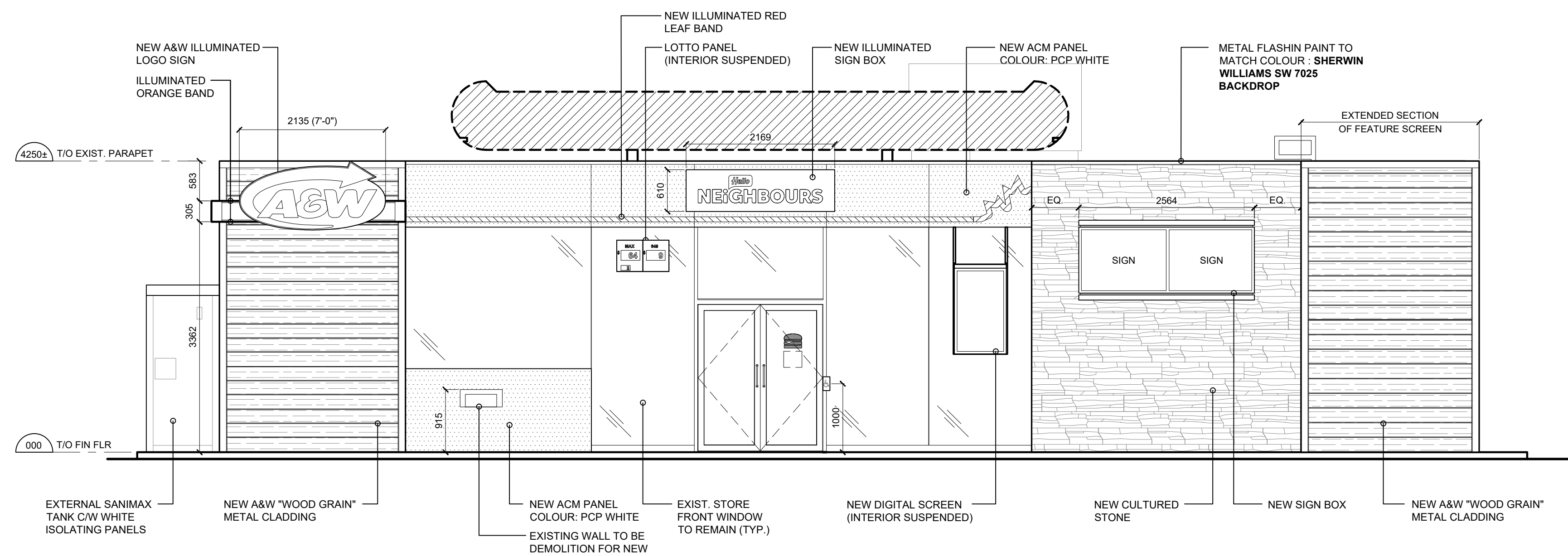
DRAWING TITLE:
EXTERIOR ELEVATIONS (EXISTING)

PROJECT:
 C.STORE REFRESH WITH A&W ADDITION
4000 RIVERSIDE DR.
 OTTAWA, ONTARIO

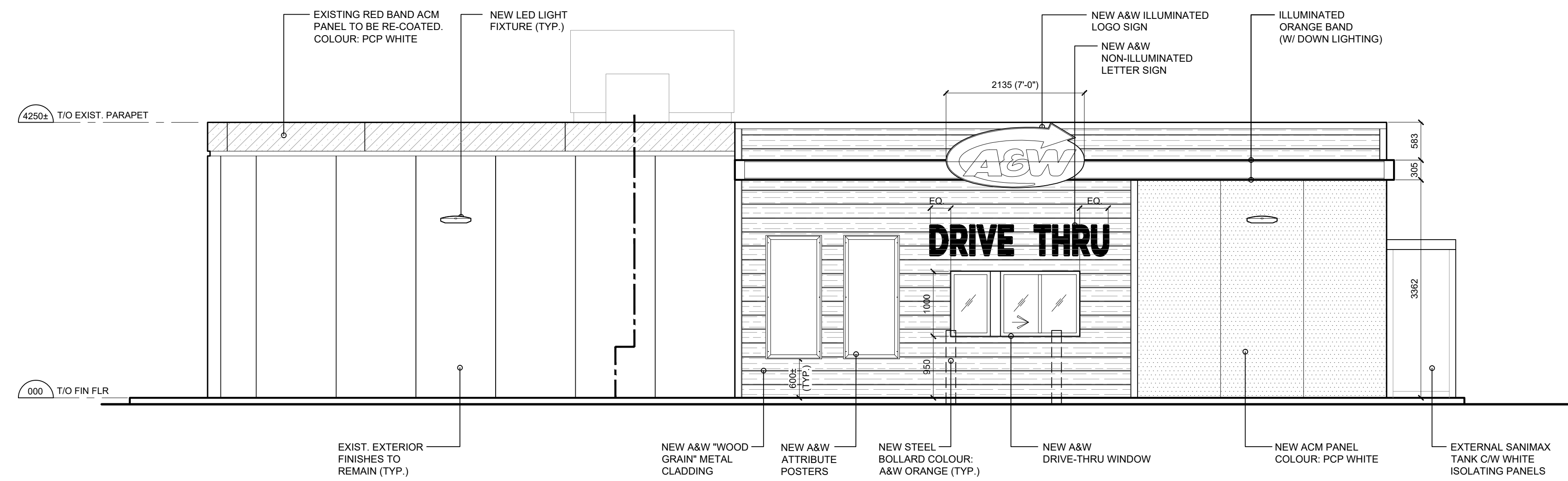
DRAWN BY: RG	CAD INFO: SHEET SIZE: D (559 x 864)
DRAWING SCALE: 1:50	PETRO-CANADA CAD FILE No.
DATE DRAWN: DEC 2025	CONSULTANT CAD FILE No.
CHECKED BY:	PLOT SCALE
APPROVED BY:	PLOT DATE
	PLOT CONFIGURATION

STD No./OUTLET No. **35197** **A3**

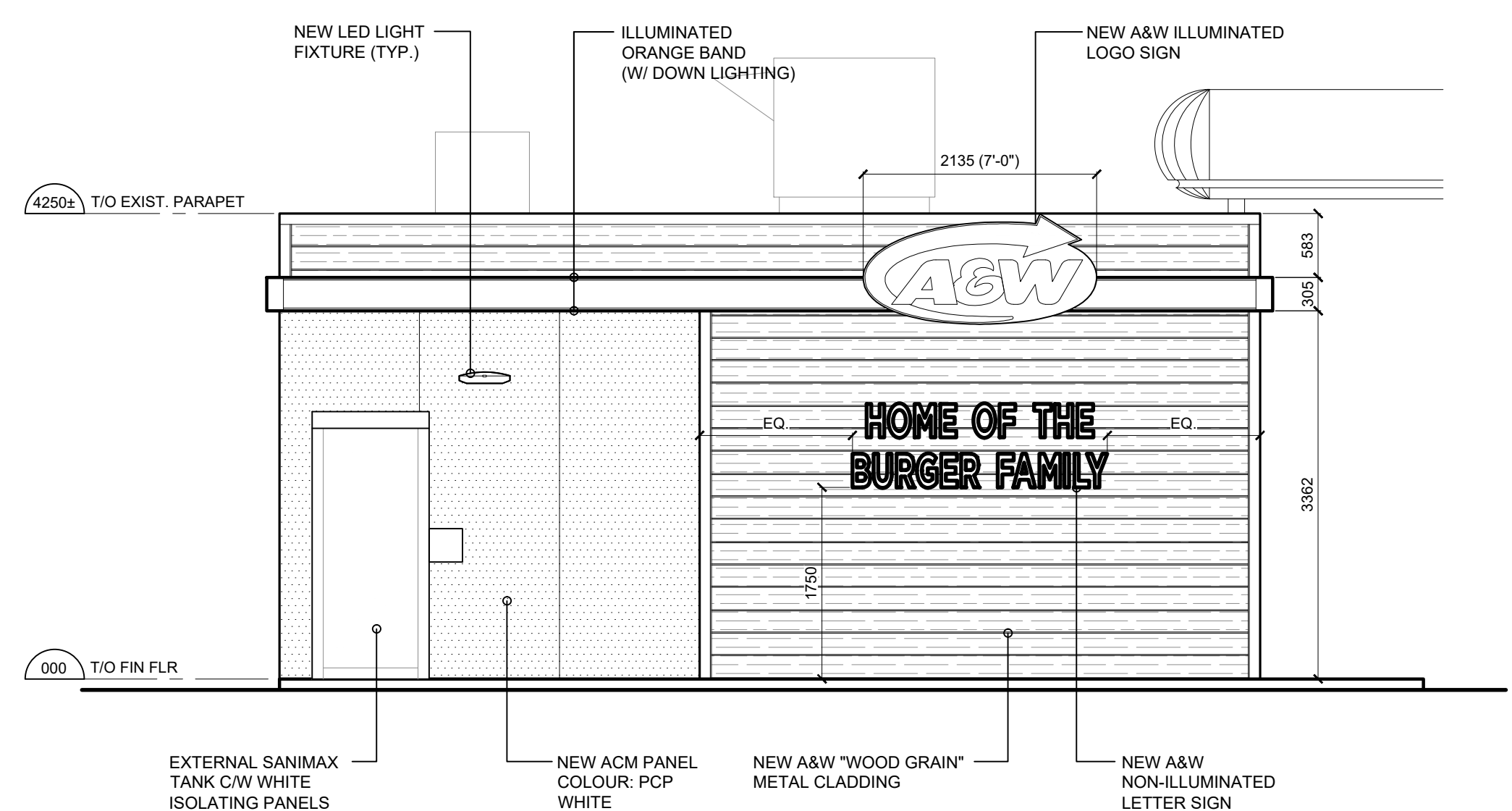
Committee of Adjustment
 Received | Reçu le
 2026-01-05
 City of Ottawa | Ville d'Ottawa
 Comité de dérogation



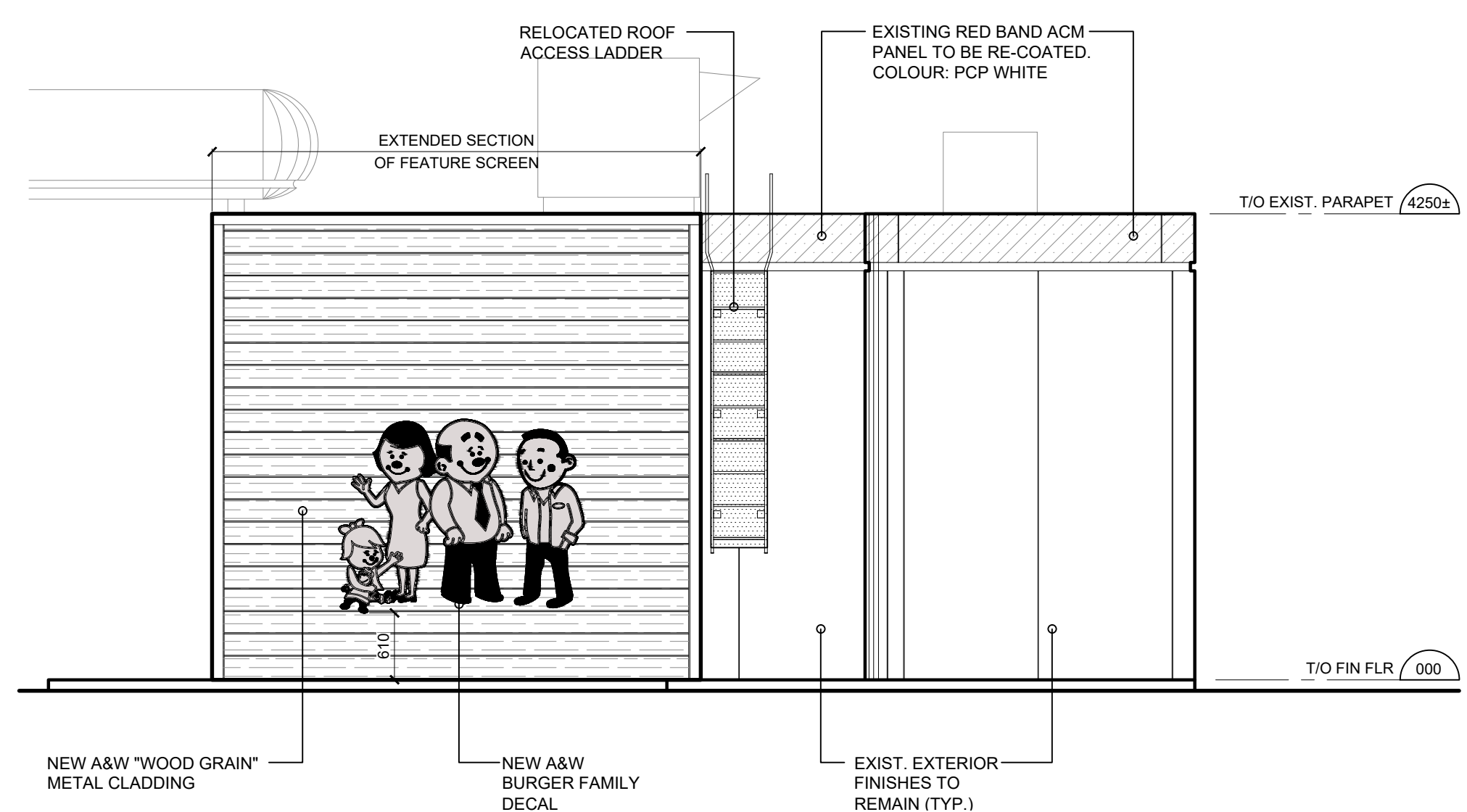
1 NORTH ELEVATION (PROPOSED)



2 SOUTH ELEVATION (PROPOSED)



3 EAST ELEVATION (PROPOSED)



4 WEST ELEVATION (PROPOSED)

REVISION TABLE		
REV.	DESCRIPTION	DRAWN / APP'D. DATE

ISSUE TABLE		
TO	FOR	DATE
CITY	ISSUED FOR SITE PLAN APPROVAL	2025/12/16

METRIC
 ALL DIMENSIONS ARE IN MILLIMETRES U.N.O. CONTRACTOR TO CHECK/VERIFY ALL DIMENSIONS PRIOR TO COMMENCEMENT OF WORK. ALL DISCREPANCIES TO BE REPORTED TO THE PROJECT DESIGNER. DO NOT SCALE DRAWINGS.



CONSULTANT:
K PAUL ARCHITECT INC.
 TORONTO VANCOUVER CALGARY ORLANDO
 2660 SHERWOOD HEIGHTS DRIVE, SUITE #200, OMAHA, ON L6J 7T8



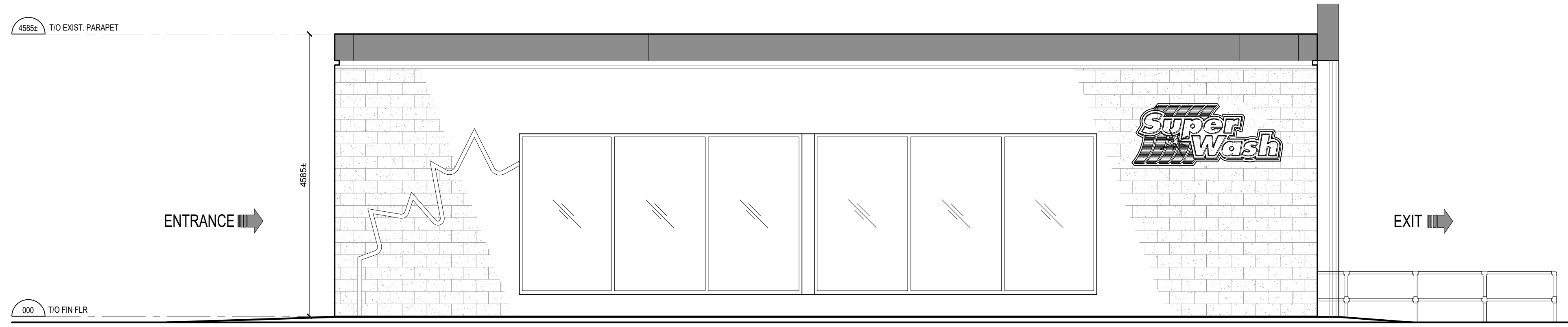
DRAWING TITLE:
EXTERIOR ELEVATIONS (PROPOSED)

PROJECT:
 C.STORE REFRESH WITH A&W ADDITION
4000 RIVERSIDE DR. OTTAWA, ONTARIO

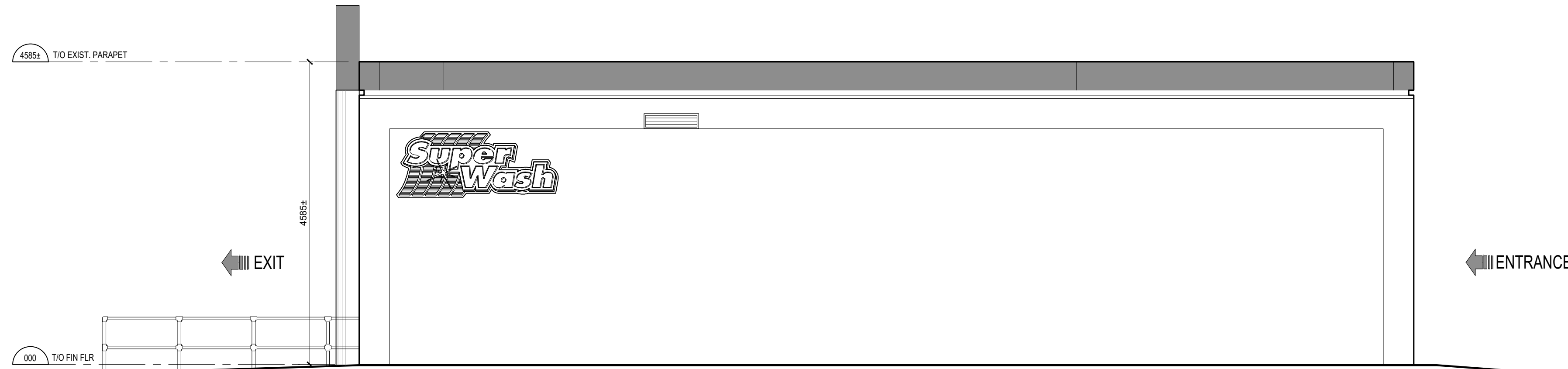
DRAWN BY: RG	CAD INFO: SHEET SIZE: D (559 x 864)
DRAWING SCALE: 1:50	PETRO-CANADA CAD FILE No.
DATE DRAWN: DEC 2025	CONSULTANT CAD FILE No.
CHECKED BY:	PLOT SCALE
APPROVED BY:	PLOT DATE
	PLOT CONFIGURATION

STD No./OUTLET No. **35197** **A4**

Committee of Adjustment
 Received | Reçu le
2026-01-05
 City of Ottawa | Ville d'Ottawa
 Comité de dérogation



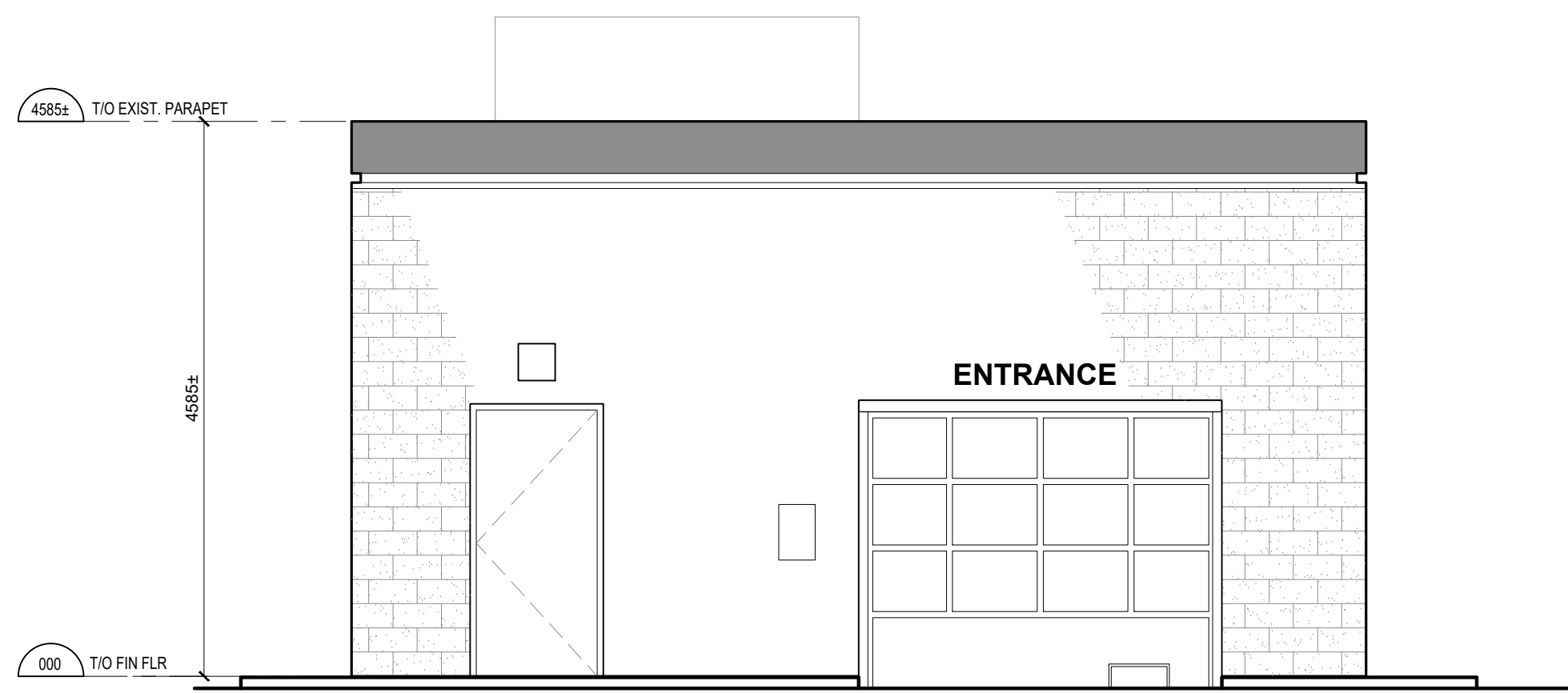
1 EAST ELEVATION (EXIST.)



2 WEST ELEVATION (EXIST.)



3 NORTH ELEVATION (EXIST.)



4 SOUTH ELEVATION (EXIST.)

REVISION TABLE

REV.	DESCRIPTION	DRAWN APP'D. DATE

ISSUE TABLE

TO	FOR	DATE
CITY	ISSUED FOR SITE PLAN APPROVAL	2025/12/16

METRIC

ALL DIMENSIONS ARE IN MILLIMETRES U.N.O. CONTRACTOR TO CHECK/VERIFY ALL DIMENSIONS PRIOR TO COMMENCEMENT OF WORK. ALL DISCREPANCIES TO BE REPORTED TO THE PROJECT DESIGNER. DO NOT SCALE DRAWINGS.



CONSULTANT:

K PAUL ARCHITECT INC.
 TORONTO-VANCOUVER-CALGARY-ORLANDO
 2860 SHERWOOD HEIGHTS DRIVE, SUITE #200, OMAHA, ON L6J 7Y8



DRAWING TITLE:

CAR WASH ELEVATIONS (EXISTING)

PROJECT:

CAR WASH REFRESH

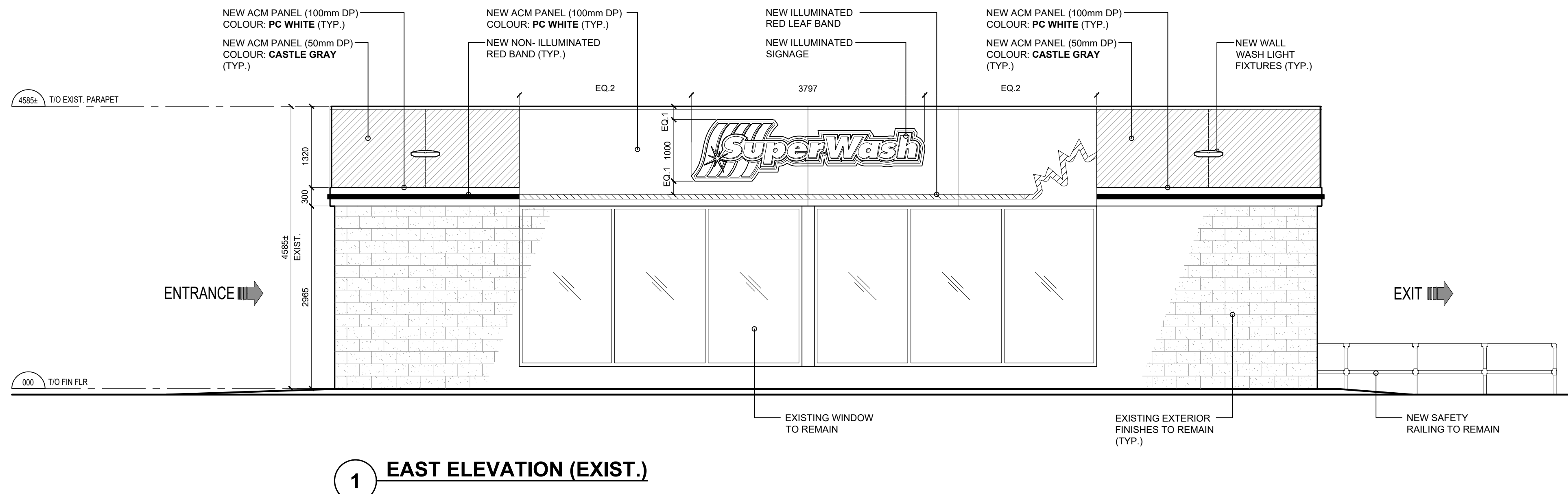
4000 RIVERSIDE DR.
OTTAWA, ONTARIO

DRAWN BY: RG	CAD INFO: SHEET SIZE: D (559 x 864)
DRAWING SCALE: AS NOTED	PETRO-CANADA CAD FILE No.
DATE DRAWN: DEC 2025	CONSULTANT CAD FILE No.
CHECKED BY:	PLOT SCALE
APPROVED BY:	PLOT DATE
	PLOT CONFIGURATION

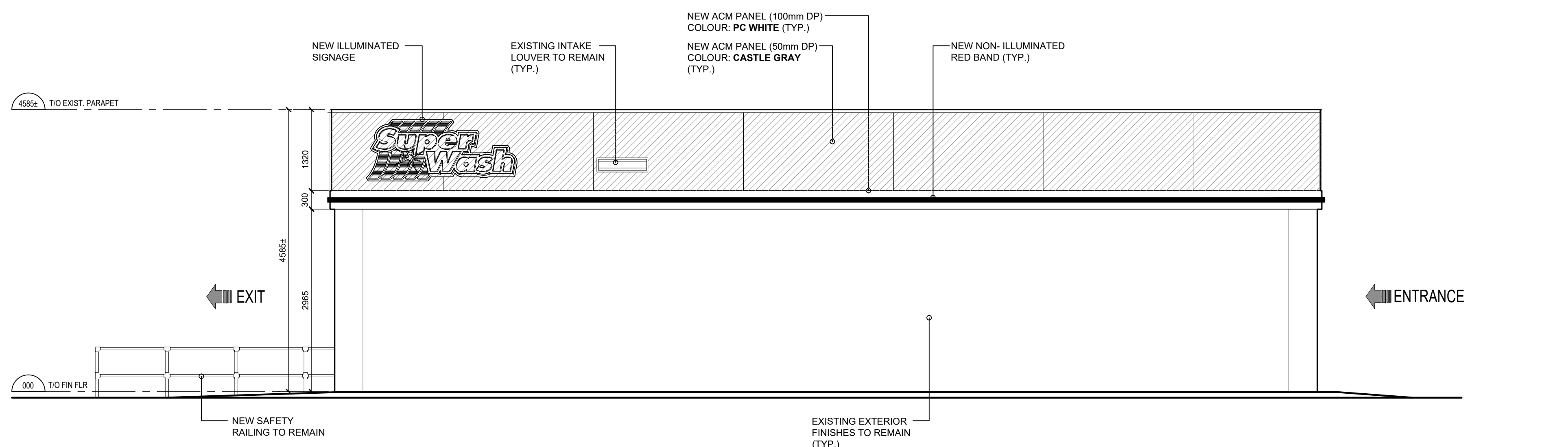
STD No./OUTLET No.

35197 **CW1**

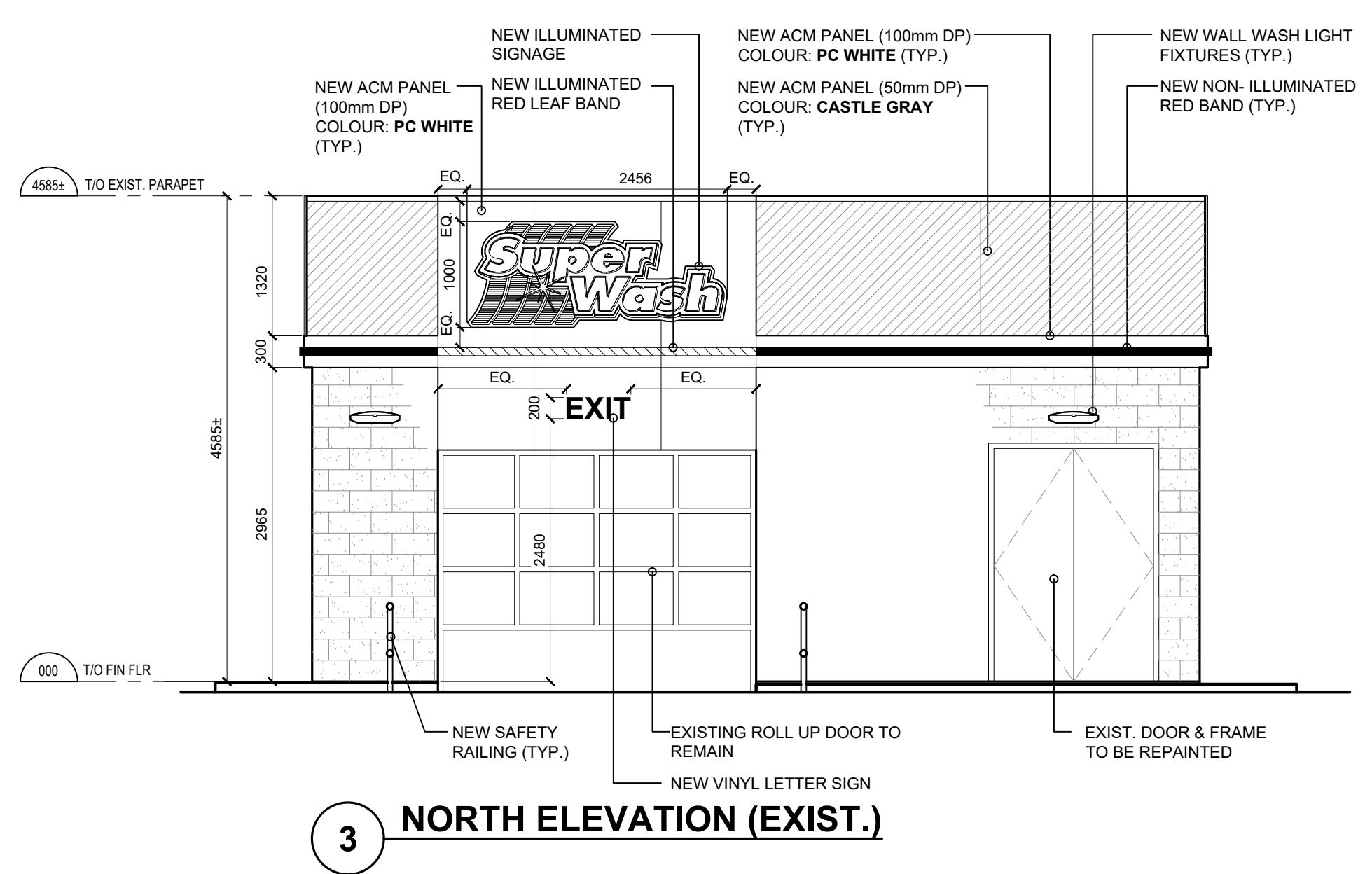
Committee of Adjustment
 Received | Reçu le
2026-01-05
 City of Ottawa | Ville d'Ottawa
 Comité de dérogation



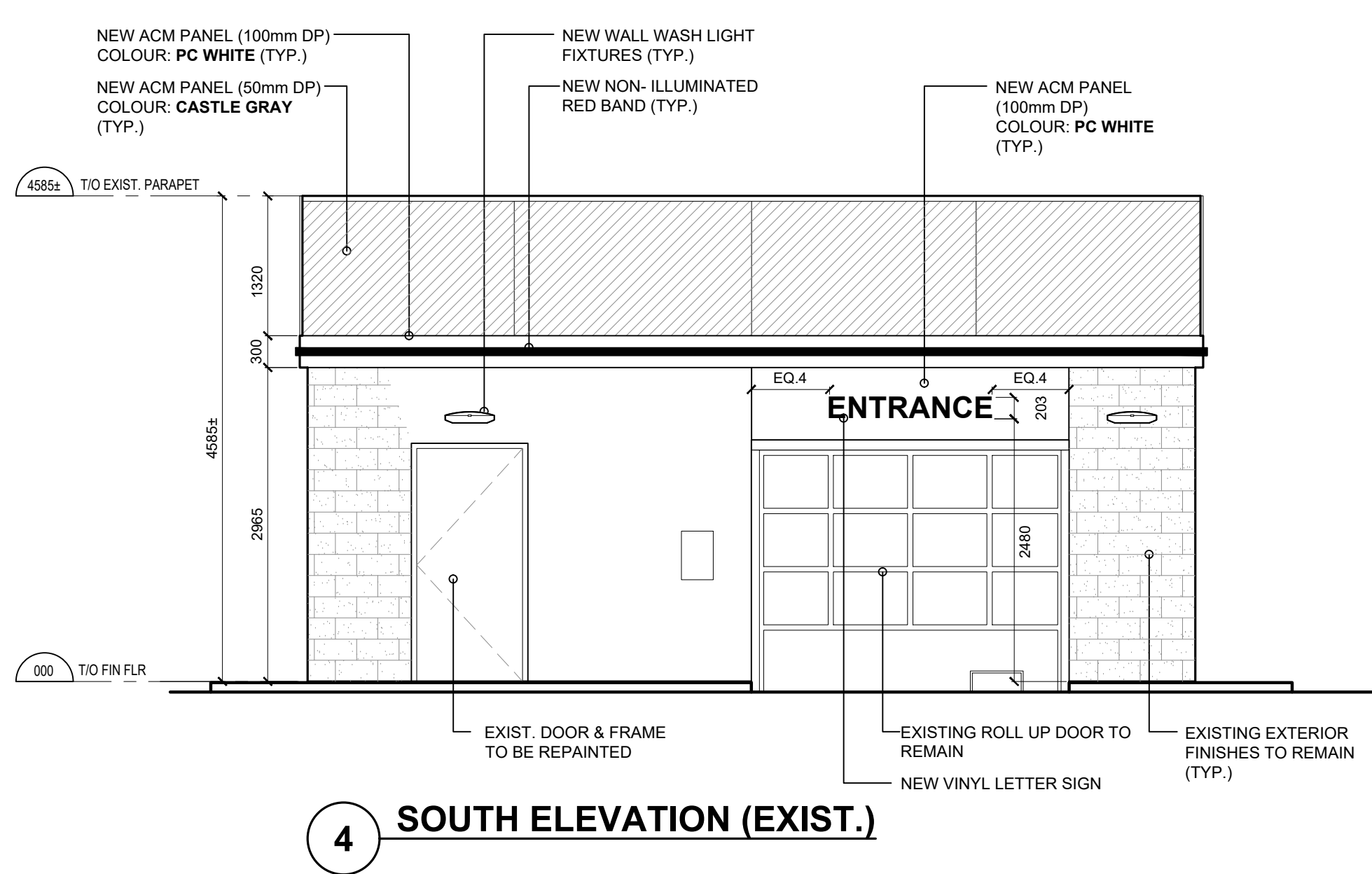
1 EAST ELEVATION (EXIST.)



2 WEST ELEVATION (EXIST.)



3 NORTH ELEVATION (EXIST.)



4 SOUTH ELEVATION (EXIST.)

REVISION TABLE		
REV.	DESCRIPTION	DRAWN APP'D. DATE

ISSUE TABLE		
TO	FOR	DATE
CITY	ISSUED FOR SITE PLAN APPROVAL	2025/12/16

METRIC
 ALL DIMENSIONS ARE IN MILLIMETRES U.N.O. CONTRACTOR TO CHECK/VERIFY ALL DIMENSIONS PRIOR TO COMMENCEMENT OF WORK. ALL DISCREPANCIES TO BE REPORTED TO THE PROJECT DESIGNER. DO NOT SCALE DRAWINGS.



CONSULTANT:
K PAUL ARCHITECT INC.
 TORONTO-VANCOUVER-CALGARY-ORLANDO
 2860 SHERWOOD HEIGHTS DRIVE, SUITE #200, OMAHAVILLE, ON L6J 7Y8



DRAWING TITLE:
CAR WASH ELEVATIONS (PROPOSED)

PROJECT:
 CAR WASH REFRESH
4000 RIVERSIDE DR.
 OTTAWA, ONTARIO

DRAWN BY: RG	CAD INFO: SHEET SIZE D (559 x 864)
DRAWING SCALE: AS NOTED	PETRO-CANADA CAD FILE No.
DATE DRAWN: DEC 2025	CONSULTANT CAD FILE No.
CHECKED BY:	PLOT SCALE
APPROVED BY:	PLOT DATE
	PLOT CONFIGURATION

STD No./OUTLET No.
35197 **CW2**