

1461, 1485 & 1495 Heron Road

REQUESTED MINOR VARIANCES

b) To permit the severance of land although the land does not abut a public street; whereas the by-law requires that land abuts an improved public street for a minimum distance of 3.0 metres (Section 59(1)).

c) To permit the severance of land although the land severed does not currently abut a public street; whereas the by-law states that no person shall sever any land unless the land severed and the land retained each abut to a street (Section 59(2)).

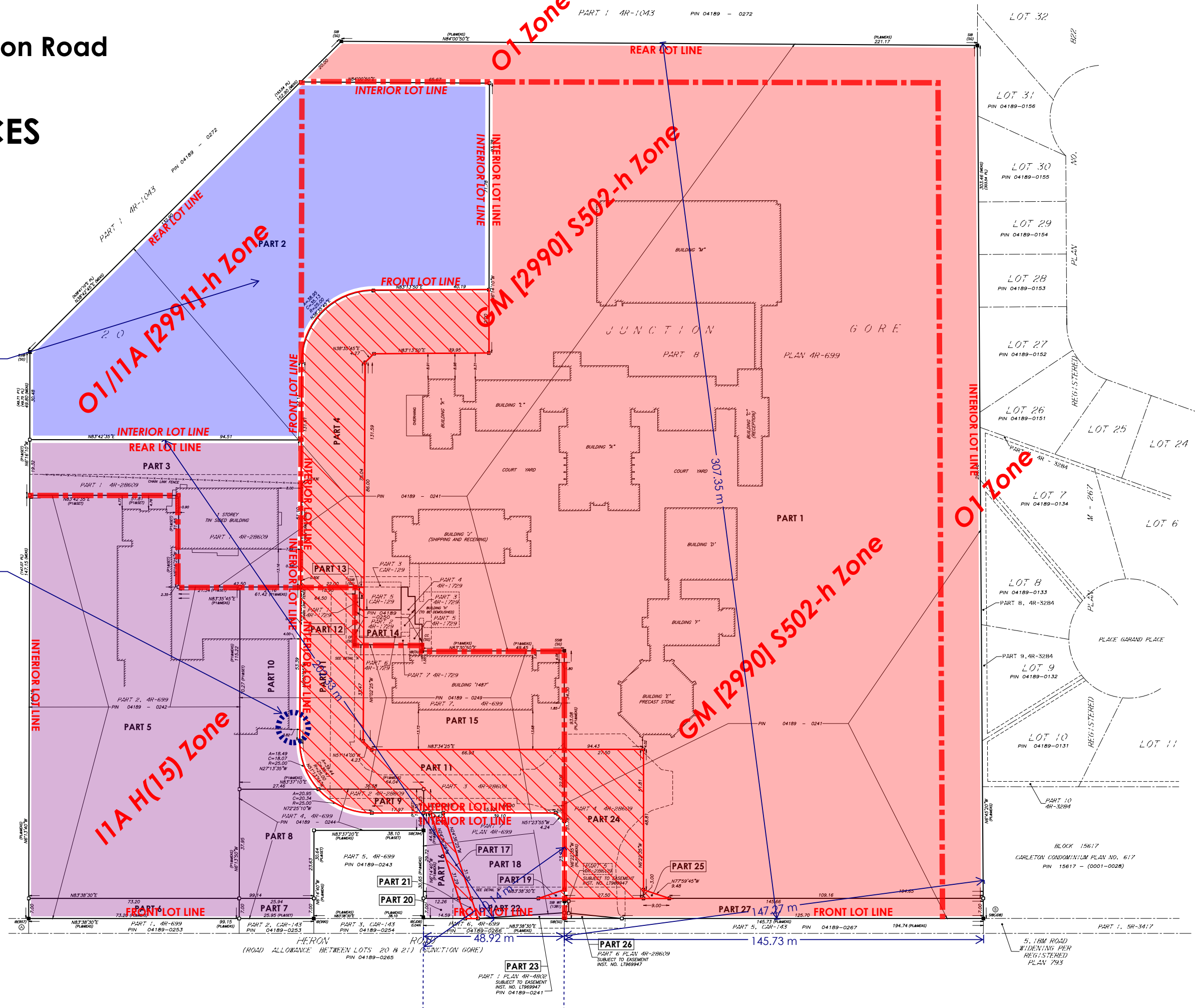
d) To permit a lot width of 0 metres; whereas the By-law requires a lot width of 15 metres (Table 170A(a)).

a) To permit an interior side yard setback of 3.8 metres; whereas the By-law requires a minimum interior side yard setback of 7.5 metres in Areas A and B on Schedule 1 (Table 170A(e)).

Committee of Adjustment
Received | Reçu le

2026-01-07

City of Ottawa | Ville d'Ottawa
Comité de dérogation



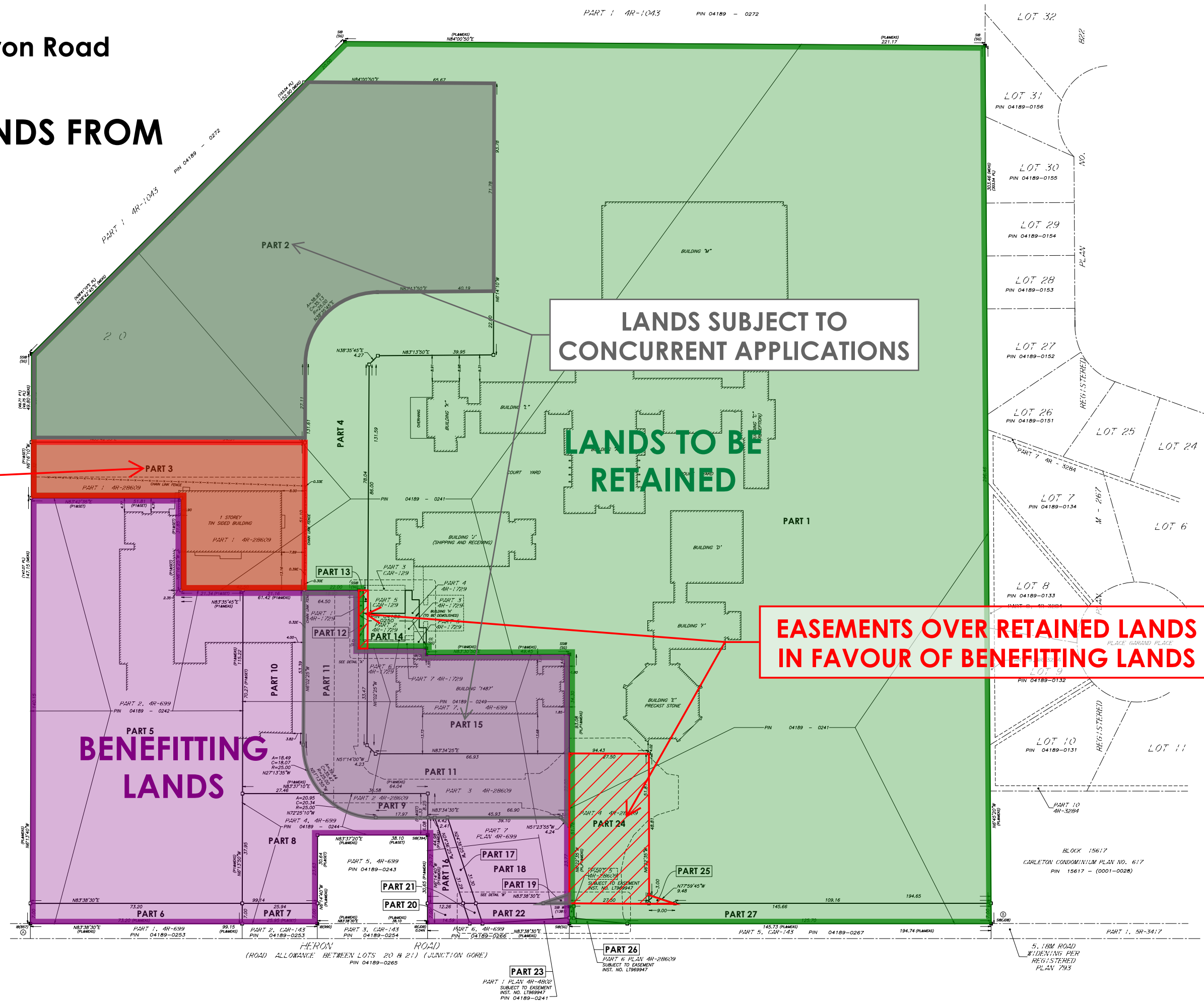
1461, 1485 & 1495 Heron Road

CONSENT B: TRANSFER OF LANDS FROM CLC TO OCSB

PART 1 AR-1043 PIN 04189 - 0272

**LANDS TO BE
SEVERED**

Committee of Adjustment
Received | Reçu le
2026-01-07
City of Ottawa | Ville d'Ottawa
Comité de dérogation



**LANDS SUBJECT TO
CONCURRENT APPLICATIONS**

**LANDS TO BE
RETAINED**

**EASEMENTS OVER RETAINED LANDS
IN FAVOUR OF BENEFITTING LANDS**

**BENEFITTING
LANDS**

HERON ROAD
(ROAD ALLOWANCE BETWEEN LOTS 20 & 21) (JUNCTION GORE)
PIN 04189-0265

PART 23
PART 1 PLAN AR-4802
SUBJECT TO EASEMENT
INST. NO. L796947
PIN 04189-0241

PART 26
PART 6 PLAN AR-28609
SUBJECT TO EASEMENT
INST. NO. L796947

5.18M ROAD
WIDENING PER
REGISTERED
PLAN 793

BLOCK 15617
CARLETON CONDOMINIUM PLAN NO. 617
PIN 15617 - (0001-0028)

1461, 1485 & 1495 Heron Road

CONSENT C: CREATION OF CEPEO PARCEL

LANDS TO BE SEVERED

LANDS TO BE RETAINED

Committee of Adjustment
Received | Reçu le

2026-01-07

City of Ottawa | Ville d'Ottawa
Comité de dérogation

**LANDS SUBJECT TO
CONCURRENT
APPLICATIONS**

**EASEMENTS OVER RETAINED LANDS
IN FAVOUR OF SEVERED LANDS**

