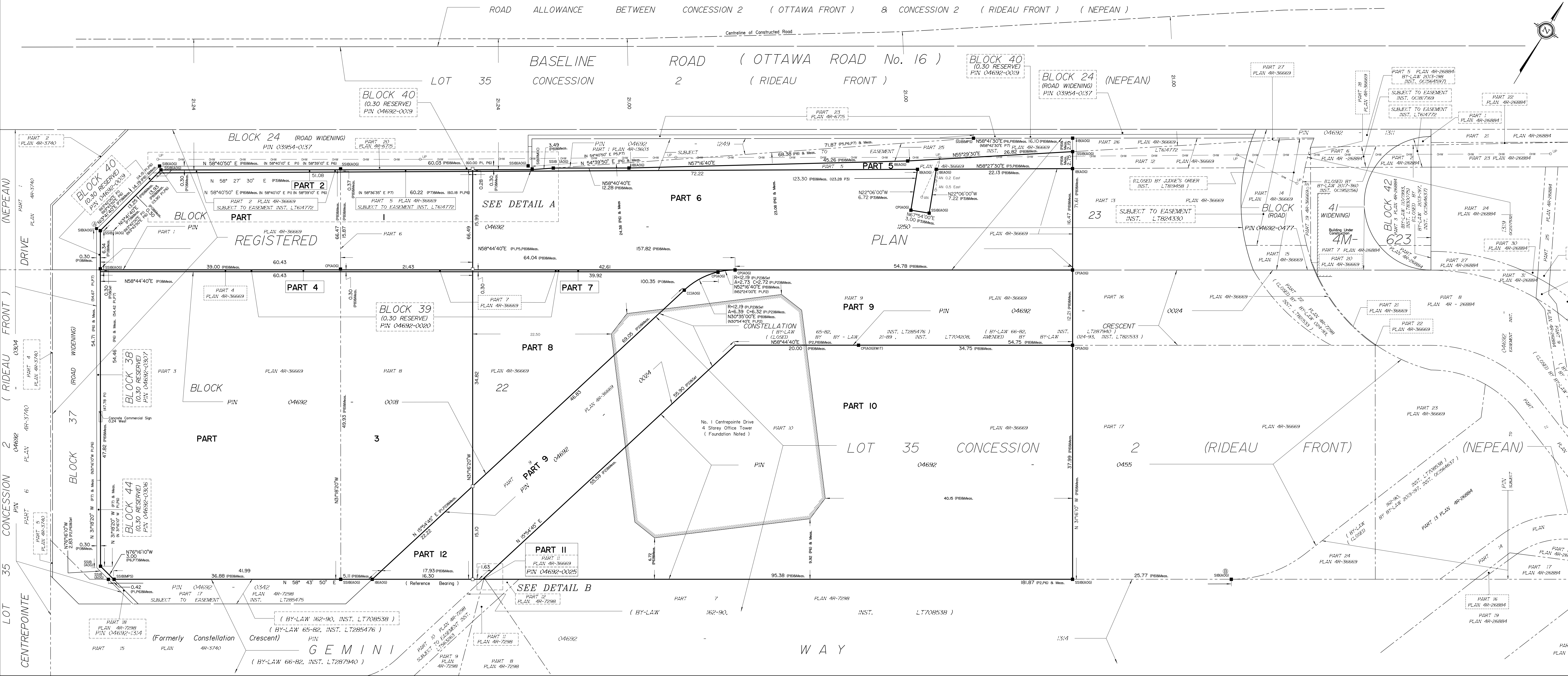


SCHEDULE			
AREA (Sq.m)	PART	LOT/BLOCK	PLAN/CONCESSION
913.3	1		
13.6	2	PART OF BLOCK 23	
2891.2	3	PART OF BLOCK 23	
18.1	4	PART OF BLOCK 39	PLAN 4M-623
123.9	5	PART OF BLOCK 23	
1559.4	6	PART OF BLOCK 23	
12.6	7	PART OF BLOCK 39	
655.7	8	PART OF BLOCK 22	
1363.4	9	PART OF BLOCK 22	
2859.4	10	PART OF LOT 35	CONCESSION 2 (RIDEAU FRONT)
0.05	11		
122.7	12		

Parts 2 & 5: Subject to Easement Inst. L7614772
Parts 1, 2 & 6 Comprise Part of PIN 04692-1250
Parts 3 & 8 Comprise All of PIN 04692-0018
Parts 4 & 7 Comprise All of PIN 04692-0020
Parts 9 & 12 Comprise Part of PIN 04692-0024



**PLAN OF SURVEY OF
BLOCK 39 AND
PART OF BLOCKS 22 and 23
REGISTERED PLAN 4M-623
AND
PART OF LOT 35
CONCESSION 2 (RIDEAU FRONT)
GEOGRAPHIC TOWNSHIP OF NEPEAN
CITY OF OTTAWA**

Surveyed by Annis, O'Sullivan, Vollebek Ltd.

Scale 1: 250
10 7.5 5.0 2.5 0 5 10 Metres

The intended plot size of the plan is 1219 mm in width by 610 mm in height when plotted at a scale of 1:250.

Metric DISTANCES AND COORDINATES SHOWN ON THIS PLAN ARE IN METRES AND CAN BE CONVERTED TO FEET BY DIVIDING BY 0.3048.

Surveyor's Certificate
I CERTIFY THAT:
1. This survey and plan are correct and in accordance with the Surveys Act, the Surveyors Act and the Land Titles Act and the regulations made under them.
2. The survey was completed on the ___ day of ___ 2025.

XXXXXX XX 2025
Date
E. H. Henweyer
Ontario Land Surveyor

This plan of survey relates to AOLS Plan Submission Form Number V-

- Notes & Legend**
- Denotes Survey Monument Planted
 - Survey Monument Found
 - SIB Standard Iron Bar
 - SSB Short Standard Iron Bar
 - IB Iron Bar
 - CC Cut Cross
 - 0.3 Metre Long Survey Monument
 - (WIT) Witness
 - Mess. Measured
 - (P1) Registered Plan 4M-623
 - (P2) Plan 4R-7288
 - (P3) Plan 4R-6715
 - (P4) Plan 4R-26884
 - (P5) Plan 4R-13603
 - (P6) Plan by (AOO) dated December 10, 2009
 - (P7) Plan by (MPS) dated March 19, 2016
 - (P8) Plan 4R-36669
 - ow — Overhead Wires
 - UP Utility Pole
 - AN Anchor

Distances shown on this plan are ground distances and can be converted to grid distances by multiplying by the combined scale factor of 0.99993.

Bearings are grid, derived from the northerly limit of Gemini Way to be shown N58°43'07"E on Plan 4R-7288 and are referenced to NAD-83 (original).

Coordinates are derived from Can-Net 2016 Real Time Network GPS observations referenced to Specified Control Points 01919680005 and 01919750705, MTM Zone 9 (76°30' West Longitude) NAD-83 (original).

Coordinate values are to urban accuracy in accordance with O. Reg. 216/10.

• 01919680005 Northing 5027191.26 Easting 361486.76
• 01919750705 Northing 5016816.93 Easting 360806.84
• Point A Northing 5023443.48 Easting 362094.24
• Point B Northing 5023490.47 Easting 362280.86

Caution: Coordinates cannot, in themselves, be used to re-establish corners or boundaries shown on this plan.

