

PLAN OF SURVEY OF
LOT 35
REGISTERED PLAN 427924
CITY OF OTTAWA
 MONUMENT-URSO SURVEYING LTD.

SCALE 1:150



METRIC
 DISTANCES SHOWN ON THIS PLAN ARE IN METRES AND CAN BE
 CONVERTED TO FEET BY DIVIDING BY 0.3048.

SURVEYOR'S CERTIFICATE

- I CERTIFY THAT:
- THIS SURVEY AND PLAN ARE CORRECT AND IN ACCORDANCE WITH THE SURVEYS ACT, THE SURVEYORS ACT, AND THE REGULATIONS MADE UNDER THEM.
 - THE SURVEY WAS COMPLETED ON THE 8TH DAY OF AUGUST, 2025.

DATE: _____
 STEFAN BAZAR
 ONTARIO LAND SURVEYOR

LEGEND

DENOTES	FOUND SURVEY MONUMENT
■	FOUND SURVEY MONUMENT
□	PLANTED SURVEY MONUMENT
IB	IRON BAR
IBØ	ROUND IRON BAR
CP	CONCRETE PIN
SIB	STANDARD IRON BAR
SSIB	SHORT STANDARD IRON BAR
(WIT)	WITNESS
ACC.	ACCEPTED
MEAS.	MEASURED
(1476)	MONUMENT-URSO SURVEYING LTD.
(P)	REGISTERED PLAN 427924
(P1)	(990) PLAN DATED OCTOBER 25, 1990
(P2)	(AOG) PLAN DATED JULY 21, 2022
(P3)	(1236) PLAN DATED JULY 31, 1991
—OH—	OVERHEAD WIRES
CLF	CHAIN-LINK FENCE
BF	BOARD FENCE
PF	PLASTIC FENCE
EOA	EDGE OF ASPHALT
SRW	STONE RETAINING WALL
C/L	CENTRELINE
WF	WEST FACE
WW	WINDOW WELL
Ac	AIR CONDITIONER
UP	UTILITY POLE
OLS	LIGHT STANDARD
GM	GAS METER

BEARING NOTES

BEARINGS ARE MTM GRID, DERIVED FROM SMART-NET REAL-TIME NETWORK GPS OBSERVATIONS AND ARE REFERRED TO THE CENTRAL MERIDIAN 76°30' WEST LONGITUDE OF MTM ZONE 9 NAD83 (CSRS)(2010.0).

FOR BEARING COMPARISONS A ROTATION OF 00°32'35" COUNTER-CLOCKWISE WAS APPLIED TO PLANS P1 AND P5 TO CONVERT TO GRID BEARINGS.

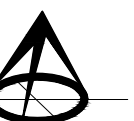
Committee of Adjustment
 Received | Reçu le

2026-03-09

City of Ottawa | Ville d'Ottawa
 Comité de dérogation

ASSOCIATION OF ONTARIO
 LAND SURVEYORS
 PLAN SUBMISSION FORM

V-109902

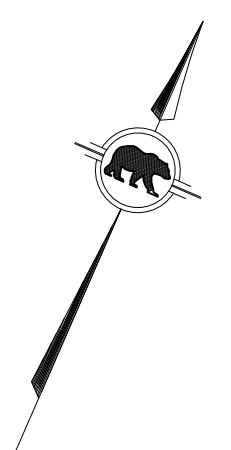
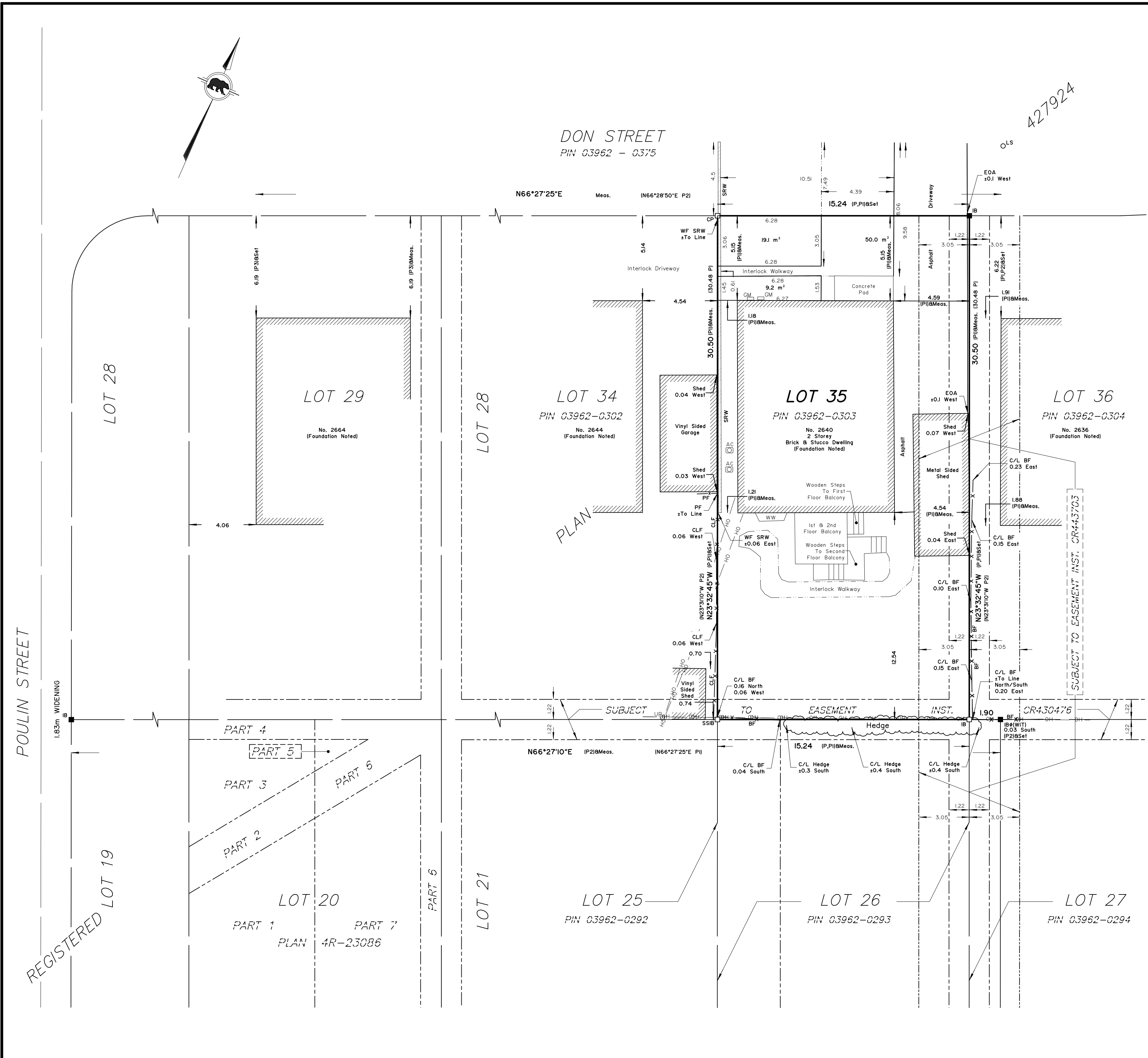


THIS PLAN IS NOT VALID
 UNLESS IT IS AN EMBOSSED
 ORIGINAL COPY
 ISSUED BY THE SURVEYOR
 IN ACCORDANCE WITH
 REGULATION 1026, SECTION 29(3).

© MONUMENT-URSO SURVEYING LTD., 2025. "THIS PLAN IS PROTECTED BY COPYRIGHT"

Monument-Urso Surveying Ltd.
 Ontario Land Surveyors | Canada Land Surveyors
 1755 WOODWARD DRIVE, SUITE 200 TEL: (613) 800-1583
 OTTAWA, ON K2C 0P9
 536 C FOURTH LINE EAST TEL: (705) 254-7851
 SAULT STE. MARIE, ON, P6A 6J8 FAX: (705) 254-5571

DRAWN: DG FIELD: ST/RA/AC FILE NO:
 PROCESSED: SB CHECKED: SB 25-0172-2640-0000-P05 P2



DON STREET
 PIN 03962 - 0375

427924

POULIN STREET

REGISTERED LOT 19

PLAN

SUBJECT TO EASEMENT INST. CR-443703

PART 1 PART 2 PART 3 PART 4 PART 5 PART 6 PART 7
 LOT 20
 PLAN 4R-23086

LOT 28
 No. 2644
 (Foundation Noted)

LOT 25
 PIN 03962-0292

LOT 35
 No. 2640
 Brick & Stucco Dwelling
 (Foundation Noted)

LOT 26
 PIN 03962-0293

LOT 36
 No. 2636
 (Foundation Noted)

LOT 27
 PIN 03962-0294

