

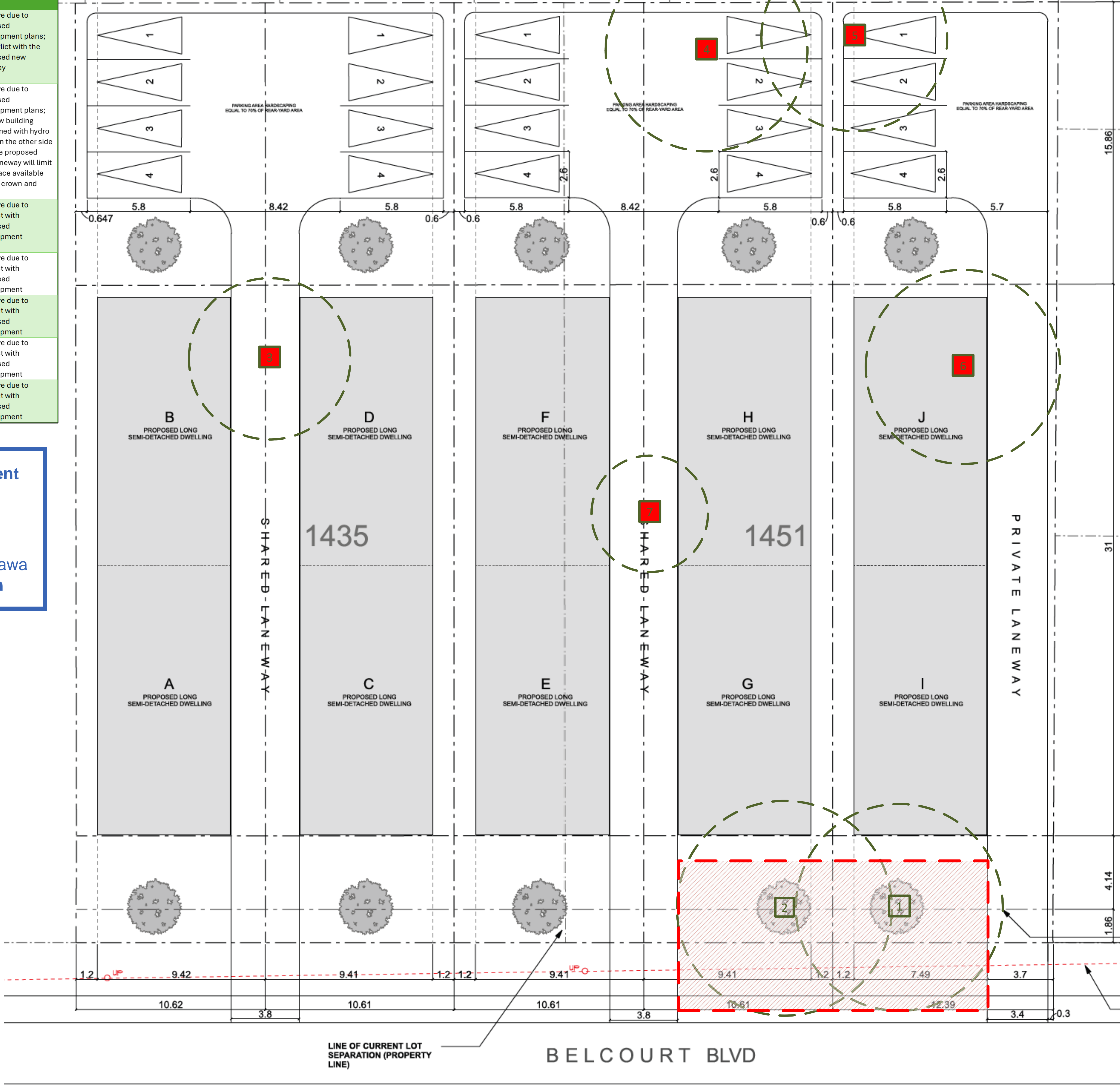
Note: the tree layer has been added to the original base layer supplied by the client in pdf format. This layer refers to the trees only, and the original base has not been altered in the process, although it may be cropped. Refer to the original plan for details as quality is lost when importing the plan into the software used to create the tree layer.

Base Layer: Site plan prepared by Justin Seguin dated Feb 21, 2025

Note; The location of trees 6 and 7 has been estimated

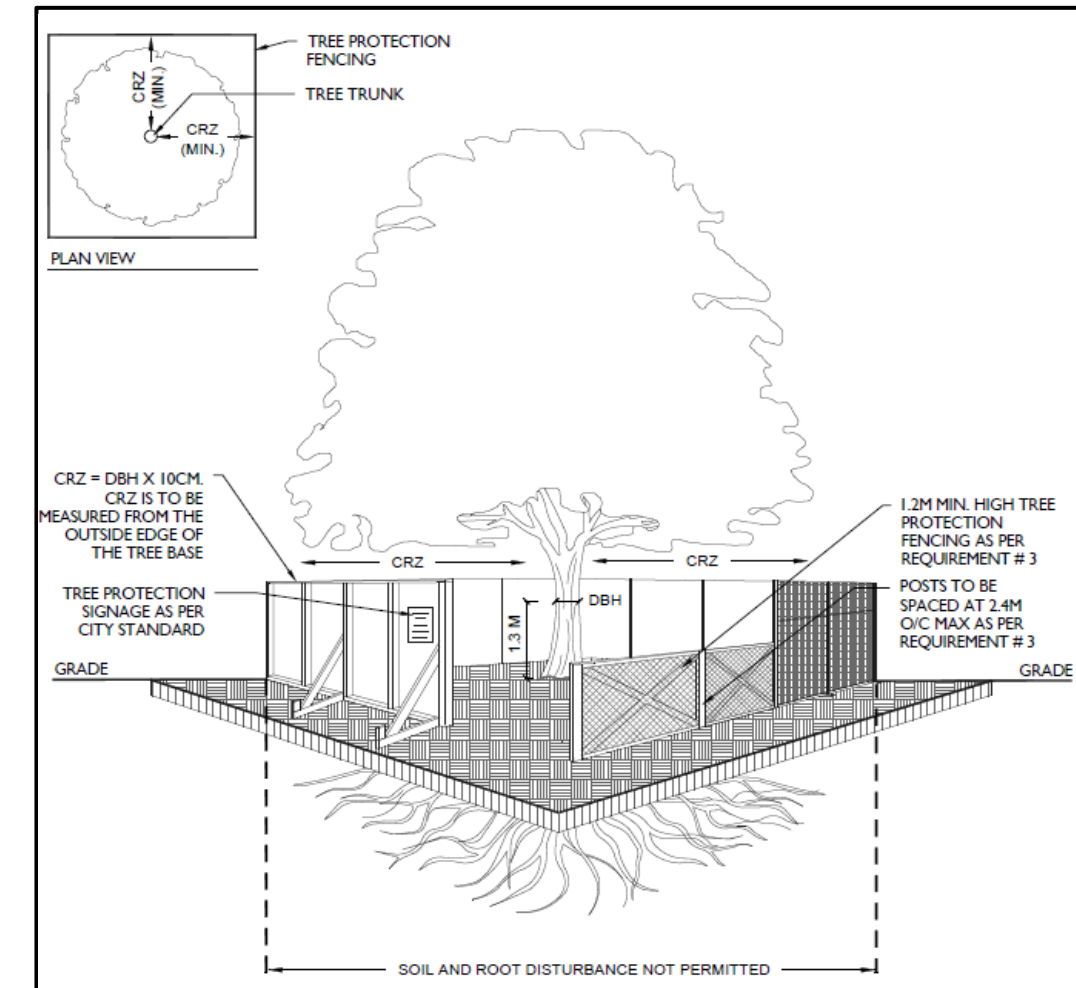
Tree #	Species	Diameter at breast height (cm)	Condition	Recommendations
1	Bur oak (<i>Quercus macrocarpa</i>)	56	Fair/good; partial crown missing due to pruning for hydro clearance	Remove due to proposed development plans; in conflict with the proposed new laneway
2	Bur oak (<i>Quercus macrocarpa</i>)	57	Fair/good; partial crown missing due to pruning for hydro clearance	Remove due to proposed development plans; the new building combined with hydro lines on the other side and the proposed new laneway will limit the space available for the crown and roots;
3	Colorado spruce (<i>Picea pungens</i>)	43	Fair; two codominant stems with sweep at base	Remove due to conflict with proposed development
4	Colorado spruce (<i>Picea pungens</i>)	54	Good/fair	Remove due to conflict with proposed development
5	Colorado spruce (<i>Picea pungens</i>)	50	Fair; many vines present	Remove due to conflict with proposed development
6*	Eastern white cedar (<i>Thuja occidentalis</i>)	52	Fair; fused stems	Remove due to conflict with proposed development
7*	Eastern white cedar (<i>Thuja occidentalis</i>)	31	Fair/good	Remove due to conflict with proposed development

Committee of Adjustment
Received | Reçu le
2025-09-15
City of Ottawa | Ville d'Ottawa
Comité de dérogation



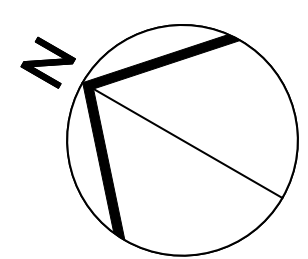
TIR Map – March 22, 2025

Date	Revision	Prepared By
March 22, 2025	Version 1	AN



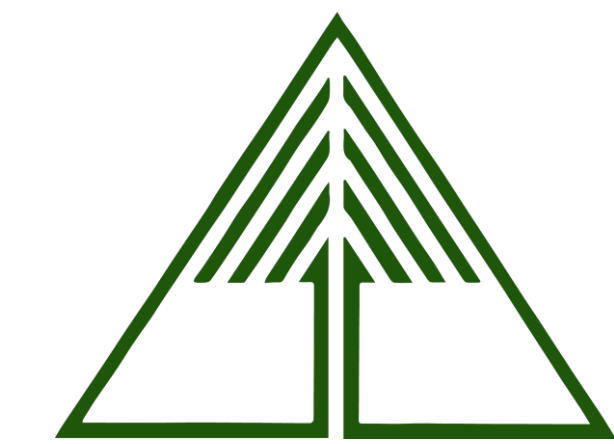
Failure to install and maintain fencing as described in this report may result in fines from the city.

- TREE PROTECTION REQUIREMENTS:**
- PRIOR TO ANY WORK ACTIVITY WITHIN THE CRITICAL ROOT ZONE (CRZ = 10 X DIAMETER) OF A TREE, TREE PROTECTION FENCING MUST BE INSTALLED SURROUNDING THE CRITICAL ROOT ZONE, AND REMAIN IN PLACE UNTIL THE WORK IS COMPLETE.
 - UNLESS PLANS ARE APPROVED BY CITY FORESTRY STAFF, FOR WORK WITHIN THE CRZ:
 - DO NOT PLACE ANY MATERIAL OR EQUIPMENT - INCLUDING OUTHOUSES;
 - DO NOT ATTACH ANY SIGNS, NOTICES OR POSTERS TO ANY TREE;
 - DO NOT RAISE OR LOWER THE EXISTING GRADE;
 - TUNNEL OR BORE WHEN DIGGING;
 - DO NOT DAMAGE THE ROOT SYSTEM, TRUNK, OR BRANCHES OR ANY TREE;
 - ENSURE THAT EXHAUST FUMES FROM ALL EQUIPMENT ARE NOT DIRECTED TOWARD ANY TREE CANOPY.
 - DO NOT EXTEND HARD SURFACE OR SIGNIFICANTLY CHANGE LANDSCAPING
 - TREE PROTECTION FENCING MUST BE AT LEAST 1.2M IN HEIGHT, AND CONSTRUCTED OF RIGID OR FRAMED MATERIALS (E.G. MODULOC - STEEL, PLYWOOD HOARDING, OR SNOW FENCE ON A 2"X4" WOOD FRAME) WITH POSTS 2.4M APART, SUCH THAT THE FENCE LOCATION CANNOT BE ALTERED. ALL SUPPORTS AND BRACING MUST BE PLACED OUTSIDE OF THE CRZ, AND INSTALLATION MUST MINIMISE DAMAGE TO EXISTING ROOTS. (SEE DETAIL)
 - THE LOCATION OF THE TREE PROTECTION FENCING MUST BE DETERMINED BY AN ARBORIST AND DETAILED ON ANY ASSOCIATED PLANS FOR THE SITE (E.G. TREE CONSERVATION REPORT, TREE INFORMATION REPORT, ETC). THE PLAN AND CONSTRUCTED FENCING MUST BE APPROVED BY CITY FORESTRY STAFF PRIOR TO THE COMMENCEMENT OF WORK.
 - IF THE FENCED TREE PROTECTION AREA MUST BE REDUCED TO FACILITATE CONSTRUCTION, MITIGATION MEASURES MUST BE PRESCRIBED BY AN ARBORIST AND APPROVED BY CITY FORESTRY STAFF. THESE MAY INCLUDE THE PLACEMENT OF PLYWOOD, WOOD CHIPS, OR STEEL PLATING OVER THE ROOTS FOR PROTECTION OR THE PROPER PRUNING AND CARE OF ROOTS WHERE ENCOUNTERED.
- THE CITY'S TREE PROTECTION BY-LAW, 2020-340 PROTECTS BOTH CITY-OWNED TREES, CITY-WIDE, AND PRIVATELY-OWNED TREES WITHIN THE URBAN AREA. PLEASE REFER TO WWW.OTTAWA.CA/TREEBYLAW FOR MORE INFORMATION ON HOW THE TREE BY-LAW APPLIES.



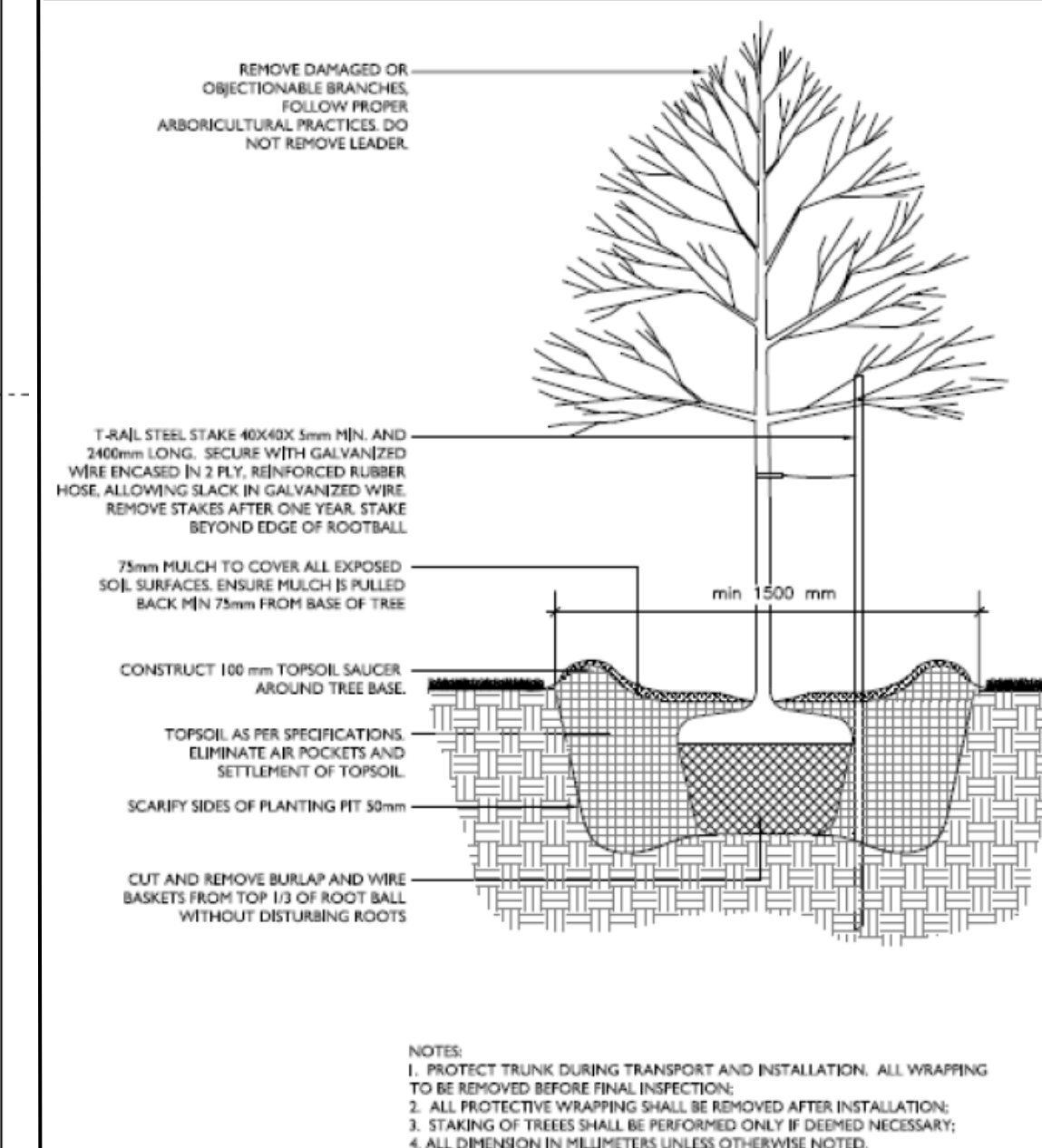
Legend

- Critical Root Zone (as defined in By-Law 2020-340)
- Private Tree
- Tree either fully or partly on adjacent property
- Tree either fully or partly on city property
- Tree Protection Area
- Tree to be removed



Tree Planting Plan – 1435 – 1453 Belcourt
 Prepared by Dendron Forestry Services
 Version 3.0, Sept 2, 2025
 For more information, please contact:
info@dendronforestry.ca

Note: the tree layer has been added to the original grading plan supplied by the client in pdf format. This layer refers to the trees only, and the original grading plan has not been altered in the process. Refer to the original plan for details as quality is lost when importing the plan into the mapping software used to create the tree layer.



KEY SPACING GUIDELINES

For Deciduous Trees:

- Minimum 50mm caliper stock
- 1.5m from sidewalks, driveways, walkways, fences, sound walls, and old stumps.
- 2.5m from curbs, hydro transformers, or behind fire hydrants
- 4-7m from any part of an existing tree, depending on canopy width
- 10m from bus shelters and community mailboxes

For Coniferous Trees:

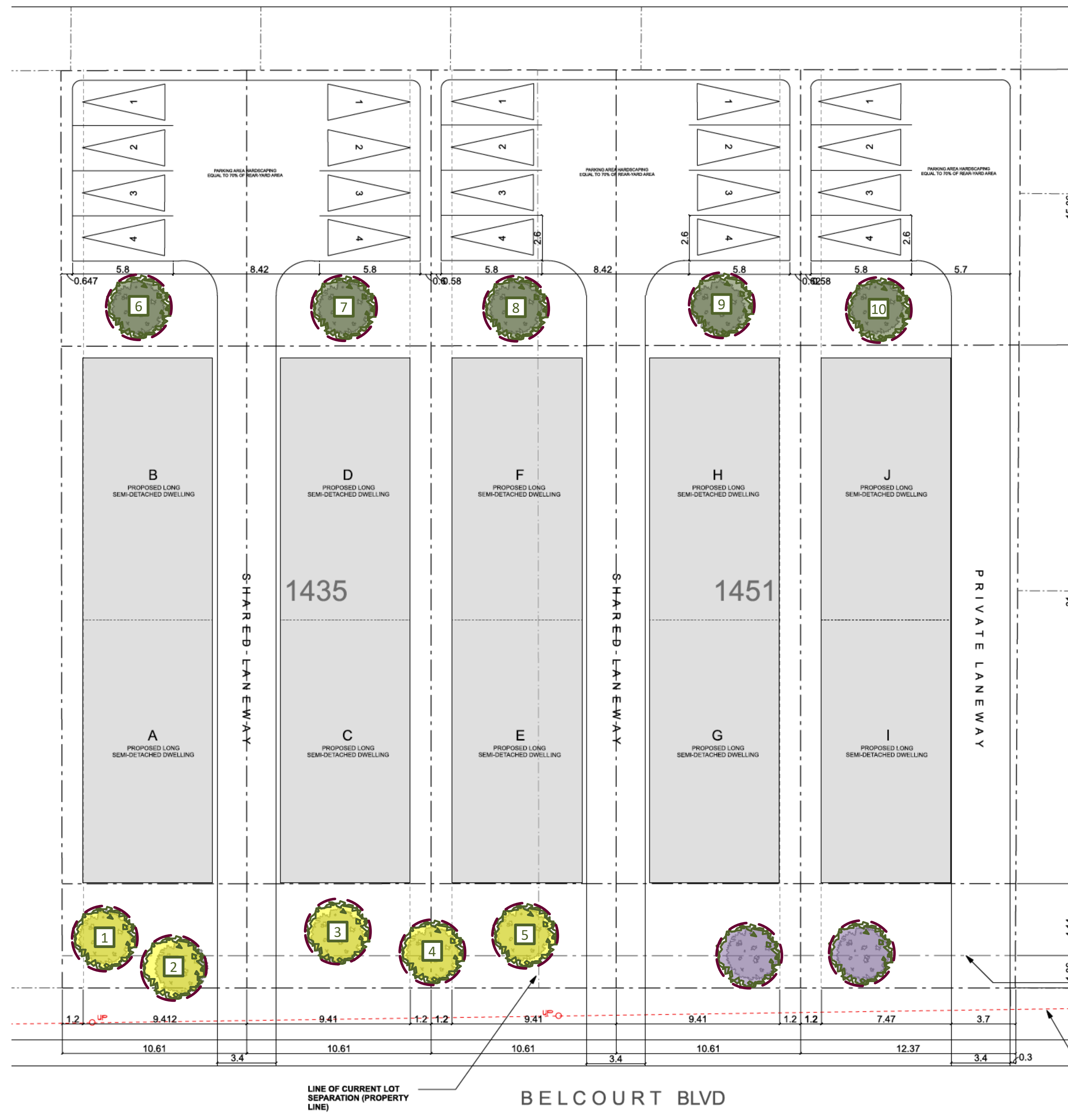
- Follow same setbacks as deciduous, but due to the widest branching being at the base of the tree, conifers need greater setbacks for ground-level obstacles.
- Minimum 200cm height stock
- 4.5m setbacks from sidewalks, walkways, driveways, and curbs.
- Do not plant on corners where sight lines will be compromised.

TREES MUST BE WATERED REGULARLY FOLLOWING PLANTING TO ENSURE PROPER ESTABLISHMENT.

On average, a young tree needs 6 gallons (24 liters) of water twice per week. (Do not water using a sprinkler as water on the foliage can lead to fungal infection)
 Placing a ring of mulch around the planting hole will help reduce water loss.
 Ensure no mulch is touching the base of the tree.

Legend

- New Private Tree
- New Tree either fully or partly on city property
- Existing Tree to be retained



Replacement Tree Specifications

Trees 1-10, small trees at maturity only due to limited space and hydro lines. The following are suggested species to choose from, but a variety should be chosen to ensure a diverse tree canopy (increased diversity results in more resiliency to pests, disease and climate change):

- Serviceberry (*Amelanchier spp*)*
- Eastern redbud (*Cercis canadensis*)
- Pagoda dogwood (*Cornus alternifolia*)
- Thornless Hawthorn (*Crataegus crus-galli*)*
- Crabapple (*Malus spp*)
- Sour cherry (*Prunus cerasus*)
- Oakleaf mountain ash (*Sorbus thuringiaca*)
- Japanese lilac (*Syringa reticulata*)
- Ohio buckeye (*Aesculus glabra*) – produces large nuts

Note: Proposed tree locations are suggestions only and should be finalized only once construction is complete and should adhere to City of Ottawa Tree Planting Guidelines

*Native to Ottawa region: Planting species native to a region can help maintain and enhance biodiversity.

Note: Norway maple (*Acer platanoides*) is not recommended as it is highly invasive and not a suitable tree for urban planting.

The species recommended herein are the most suitable species based on the existing plans. For best success, tree species should be matched to site conditions.

All deciduous trees must be a minimum of 50 mm in diameter measured no less than 15 cm above ground level. Coniferous trees must be no less than 200 cm in height.

Committee of Adjustment
 Received | Reçu le
2025-09-15
 City of Ottawa | Ville d'Ottawa
Comité de dérogation