



Committee of Adjustment
MAR 06 2026
City of Ottawa

0054

50R4282

50R2430

0048

50R4897
0051

14553

50R3759

0049

0050

4R20859 0481
0482

50R2290 0025
0045

50R174
50R3425

0217

50R472

50R5257

50R377

50R458

0068

0067

17

15

16

14554

0049

0063
50R2282

0062

15

14

17

15

16

0066

REG PLAN 50M-32

REG PLAN 50M-32

REG PLAN 50M-102
HORIZON DRIVE

REG PLAN 50M-102

REG PLAN 50M-32

REG PLAN 50M-32

REG PLAN 50M-32

REG PLAN 50M-32

REG PLAN 50M-32

REG PLAN 50M-32

REG PLAN 50M-32

REG PLAN 50M-32

18 5

19 4

20 3

21 2

22 7

2 3

2 3

2 3

2 3

12 5

12 5

12 5

12 5

12 5

12 5

12 5

12 5

12 5

12 5

12 5

12 5

12 5

12 5

12 5

12 5

12 5

12 5

12 5

12 5

12 5

12 5

12 5

12 5

12 5

12 5

12 5

12 5

12 5

12 5

12 5

12 5

12 5

12 5

12 5

12 5

12 5

12 5

12 5

12 5

12 5

12 5

12 5

12 5

12 5

12 5

12 5

12 5

12 5

12 5

12 5

12 5

12 5

12 5

12 5

12 5

12 5

12 5

12 5

12 5

12 5

12 5

12 5

12 5

12 5

12 5

12 5

12 5

12 5

12 5

12 5

12 5

12 5

12 5

12 5

12 5

12 5

12 5

12 5

12 5

12 5

12 5

12 5

12 5

12 5

12 5

12 5

12 5

12 5

12 5

12 5

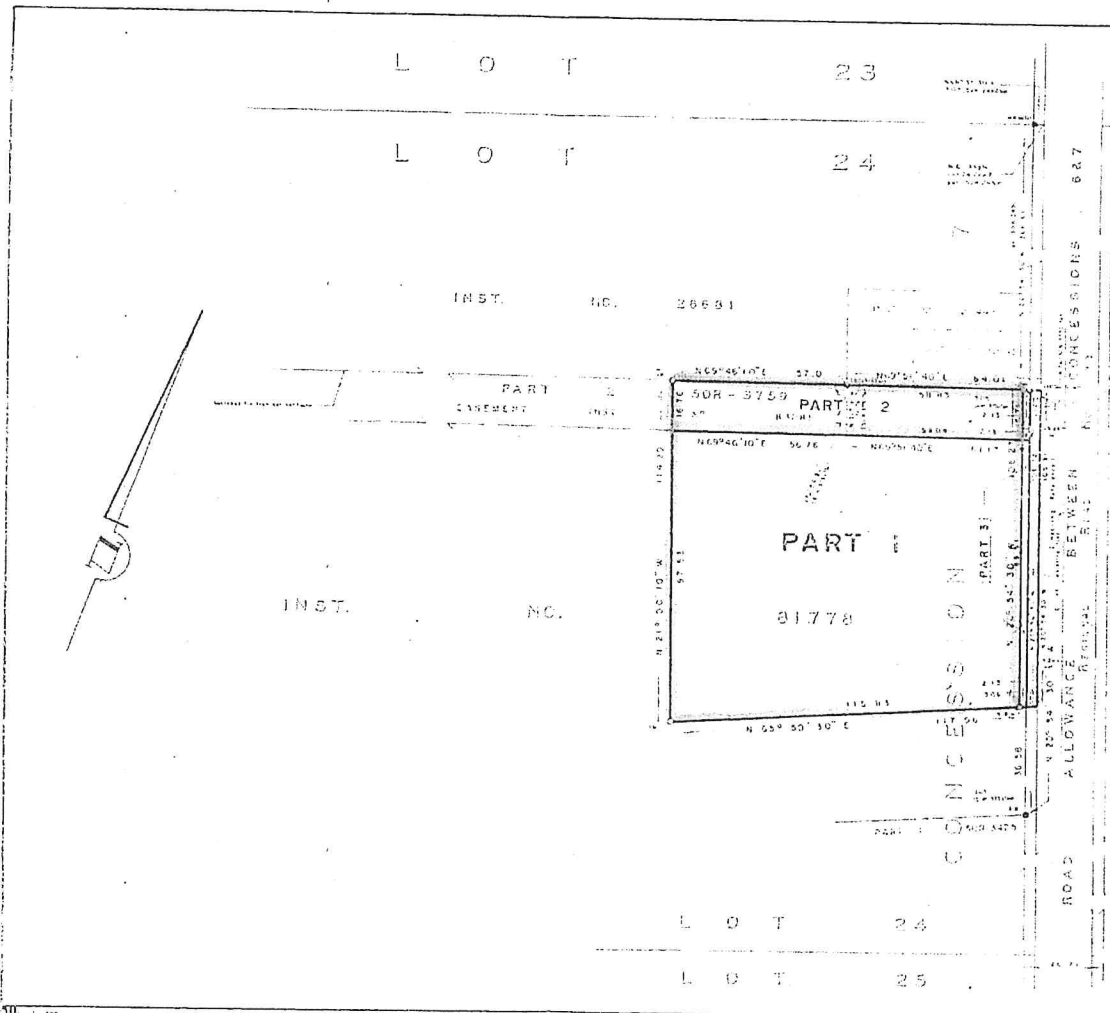
12 5

12 5

BLOCK B

BLOCK K

Committee of Adjustment
 MAR 06 2026
 City of Ottawa



GENERAL	DEPT	NO. OF LOTS	SECTION	TOWN
50R-3759	1	1	7	1776
50R-3759	1	1	7	1776
50R-3759	1	1	7	1776
50R-3759	1	1	7	1776

I REQUIRE THIS PLAN TO BE DEPOSITED UNDER THE REGISTRY ACT.

DATE *December 20, 1985*

PLAN 50R-4897
 RECEIVED AND DEPOSITED
 DATE *Dec 20, 1985*

Edward M. Lancaster
 EDWARD M. LANCASTER
 ONTARIO LAND SURVEYOR

J.M. Hepean
 LAND REGISTRAR FOR THE REGISTRY DIVISION OF RUSSELL N° 50.

CAUTION: This plan is not a plan of subdivision within the meaning of The Planning Act.

PLAN OF SURVEY OF
 PART OF LOT 24
 CONCESSION 7
 TOWNSHIP OF CUMBERLAND
 Formerly County of Russell
 REGIONAL MUNICIPALITY OF
 OTTAWA - CARLETON

SURVEYED BY
 ANNIS, O'SULLIVAN, VOLLEBEKK LTD.
 1985.

SCALE 1:1000

METRIC
 DISTANCES SHOWN ON THIS PLAN ARE IN METRES AND CAN BE CONVERTED TO FEET BY DIVIDING BY 0.3048

SURVEYOR'S CERTIFICATE
 I HEREBY CERTIFY THAT

- This survey and plan are correct and in accordance with the Survey Act and the Registry Act and the regulations made thereunder.
- The survey was completed on the *20* day of *Dec*, 1985.

Edward M. Lancaster
 EDWARD M. LANCASTER
 ONTARIO LAND SURVEYOR

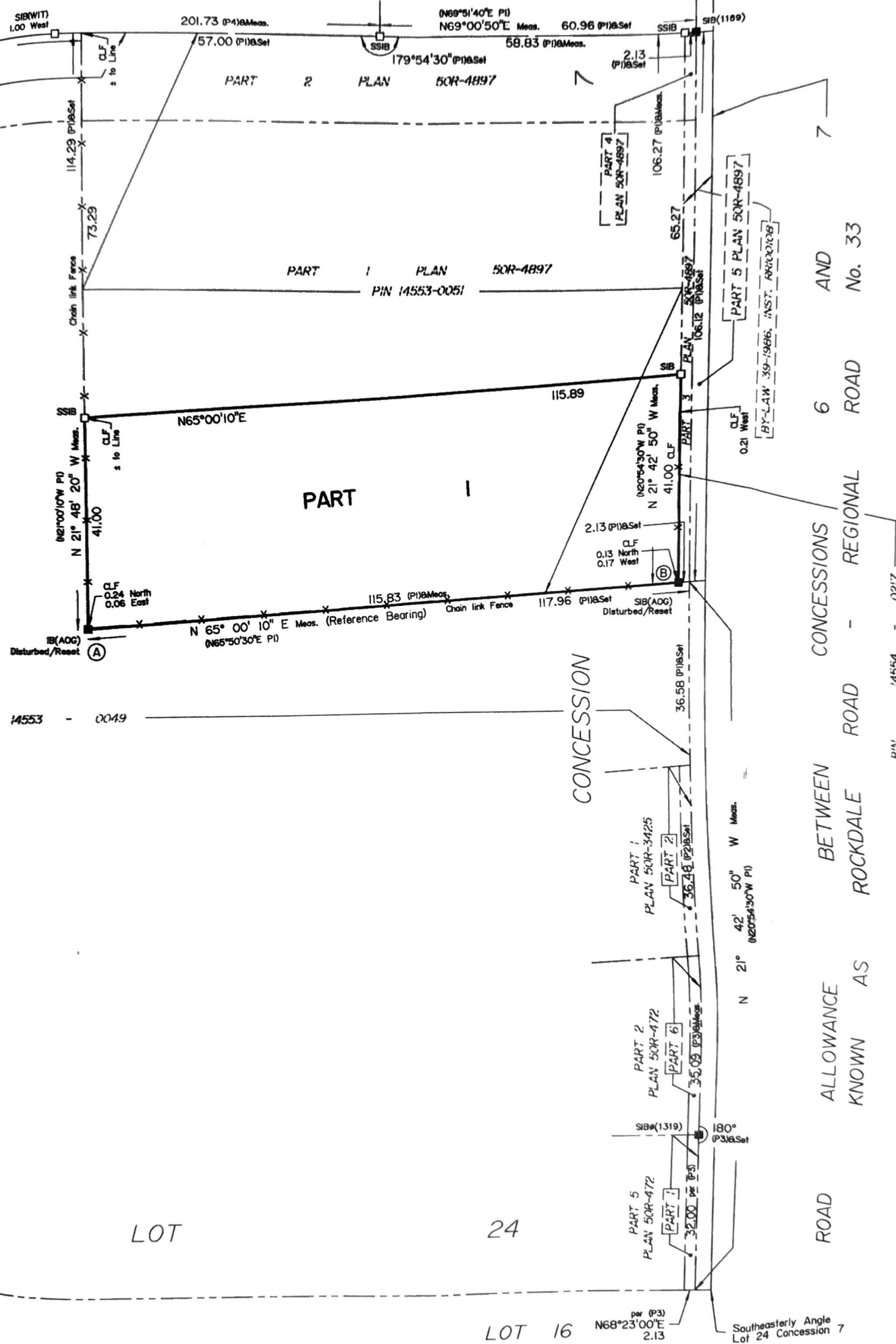
NOTES & LEGEND

Planted Survey Monument shown thus	
Found Survey Monument shown thus	
Standard Iron Bar (100.25kg x 122) shown thus	
Short Standard Iron Bar (100.25kg x 61) shown thus	
Iron Bar (0.018kg x 0.61) shown thus	
Iron Bar Round (0.019 kg x 0.61) shown thus	
Round Iron Bar shown thus	
Cut Cross shown thus	
Fe denotes Found	
A.C. denotes Accepted	
W.I. denotes Witness	
P.B.W. denotes Post and Wire	

Bearings are astronomic derived from the easterly limit of Part 2 50R-3759 shown to be N 20° 54' 20" W

FROM THE OFFICE OF
 ANNIS, O'SULLIVAN, VOLLEBEKK LTD.
 ONTARIO LAND SURVEYORS
 EMBRUN - RUSSELL & NEPEAN ONTARIO.

24



14553 - 0049

LOT

24

LOT 16

CONCESSION

CONCESSIONS BETWEEN ROAD ALLOWANCE KNOWN AS ROCKDALE REGIONAL ROAD No. 33 AND ROAD 6 AND 7

PIN 14554 - 0217

PLAN 21 O.P.
 (PLAN BY H.O. WOOD P.L.S.
 Dated February 20, 1889)

Southeasterly Angle
 Lot 24 Concession 7

Committee of Adjustment

Received | Reçu le

Revised | Modifié le : 2026-03-12

City of Ottawa | Ville d'Ottawa

Comité de dérogation

